

Product Labeling

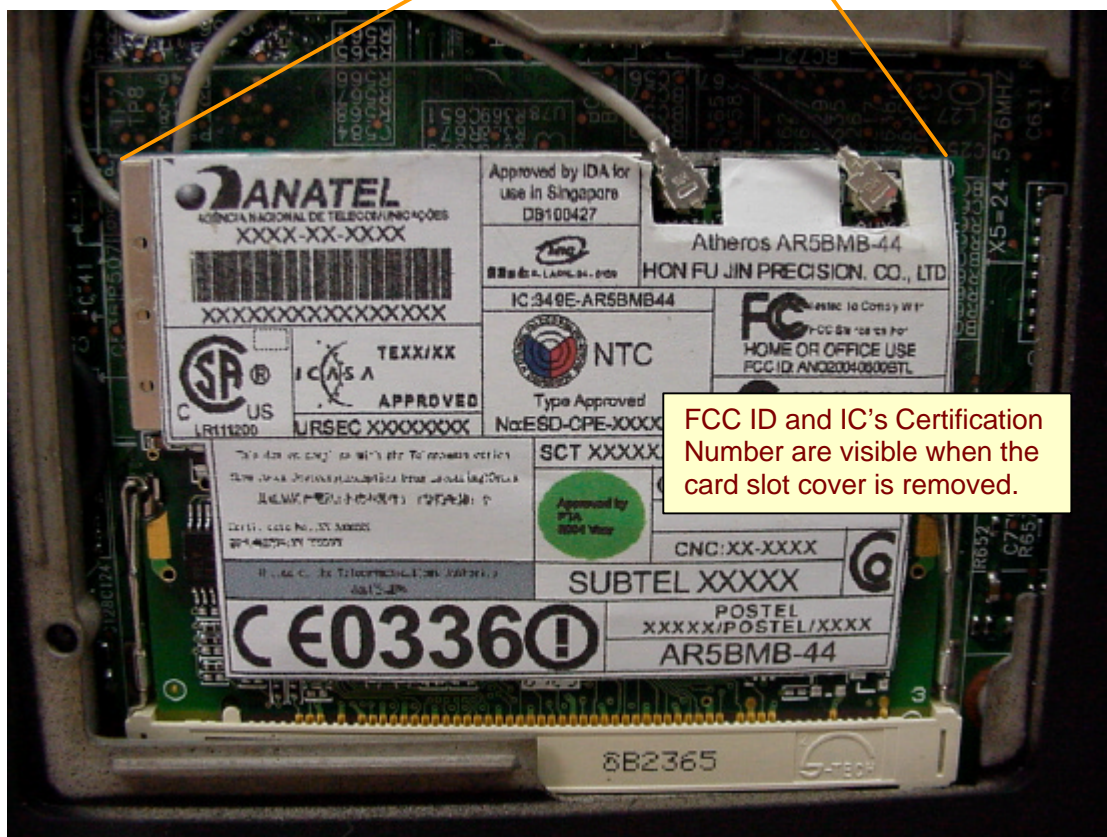
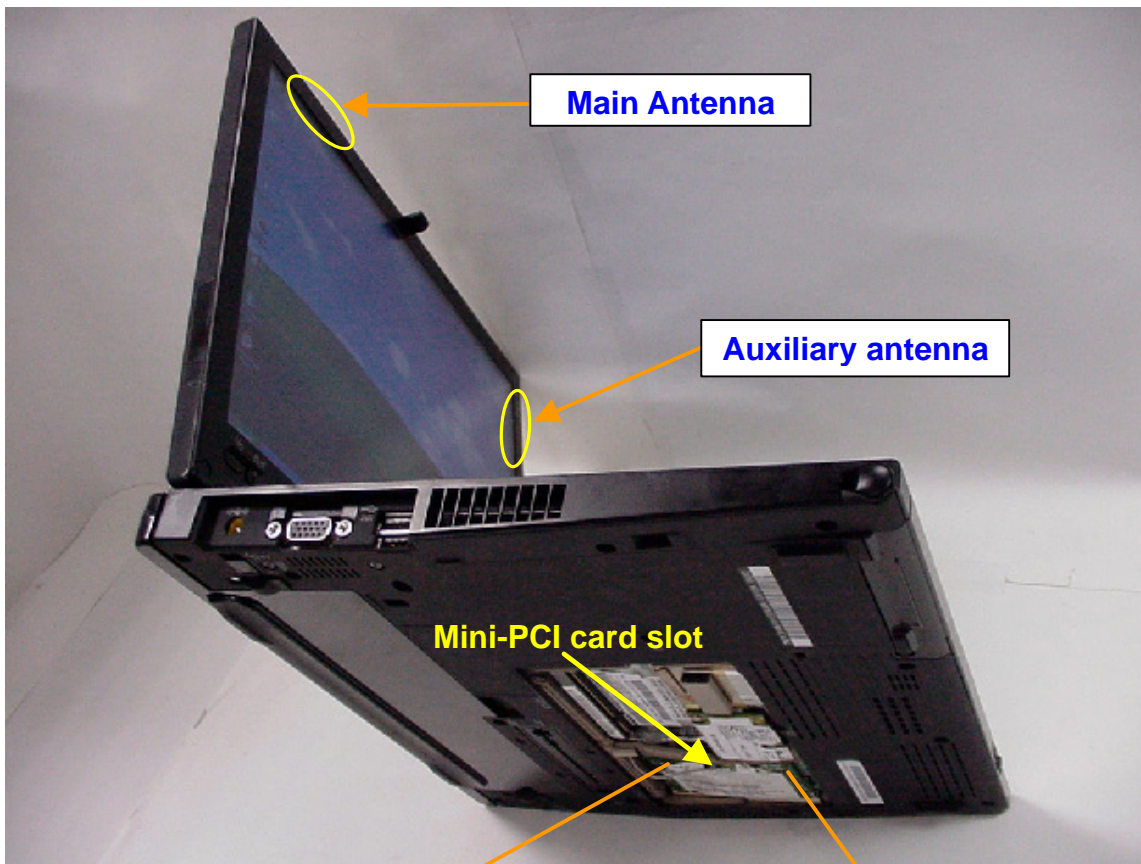
Top side



<p>AGÊNCIA NACIONAL DE TELECOMUNICAÇÕES XXXX-XX-XXXX</p> <p>XXXXXXXXXXXXXXXXXXXX</p>	<p>Approved by IDA for use in Singapore DB100427</p>	<p>FCC ID</p>
	<p> R-LARN-04-0109</p> <p>IC:349E-AR5BMB44</p>	<p>Atheros AR5BMB-44 HON FU JIN PRECISION. CO., LTD.</p>
<p> LR111200</p> <p> APPROVED URSEC XXXXXXXX</p>	<p> NTC Type Approved No:ESD-CPE-XXXXXXX</p>	<p> Tested To Comply With FCC Standards For HOME OR OFFICE USE FCC ID: ANO20040600BTL</p> <p></p>
<p>This device complies with the Telecommunication (Low Power Devices)(Exemption From Licensing)Order 此產品符合電訊(小功率器件) (豁免加執)令</p> <p>Certificate No.:XX XXXXX 證明書號碼:XX XXXXXX</p> <p>Office of the Telecommunications Authority 電訊管理局</p>	<p>SCT XXXXXXXXXXXXXXXX</p> <p> Model Number</p> <p>Z115</p> <p>CMII ID: 2004DJ0924</p> <p>CNC:XX-XXXX</p> <p>SUBTEL XXXXX</p>	<p>POSTEL XXXXX/POSTEL/XXXX AR5BMB-44</p>
<p>CE 0336</p>		

Labeling of new Host PC devices

ThinkPad X41 Tablet Series



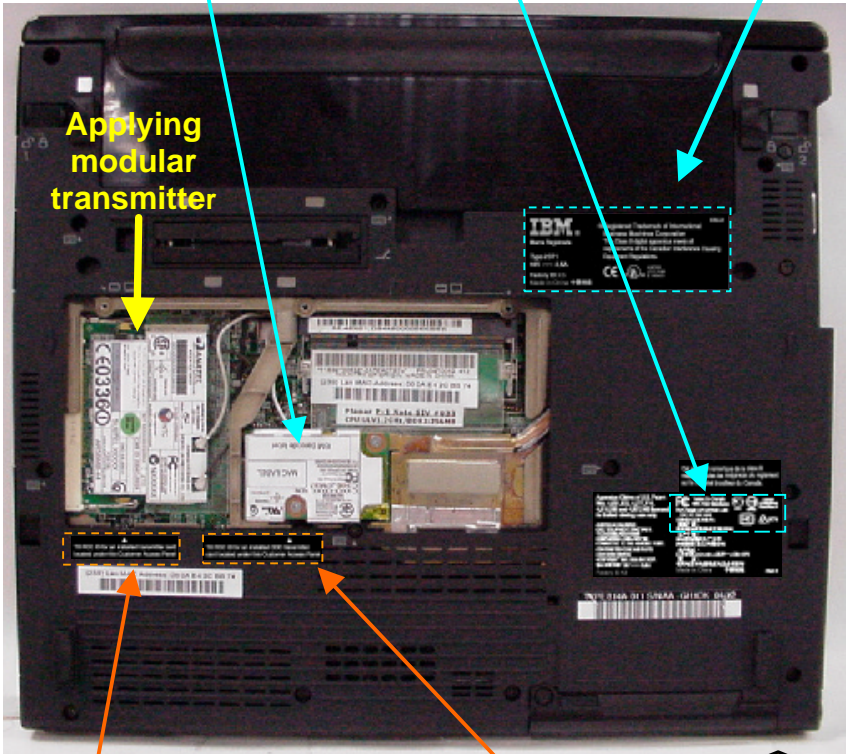
FCC ID and IC's Certification Number are visible when the card slot cover is removed.

Bottom side of ThinkPad X41 Tablet Series

FCC ID and IC certification number for digitizer in LCD panel that is to be certified with a separate application before the product's announcement.



The host device (ThinkPad X41 Tablet Series) supports the applying transmitter and a built-in type Bluetooth LMA transmitter which was certified separately (FCC ID: ANO20040700HER, Dec/09/2004)



Applying modular transmitter

Bottom view, Front side

TX FCC ID for an installed transmitter card located under this Customer Access Panel

TX FCC ID for an installed CDC transmitter card located under this Customer Access Panel