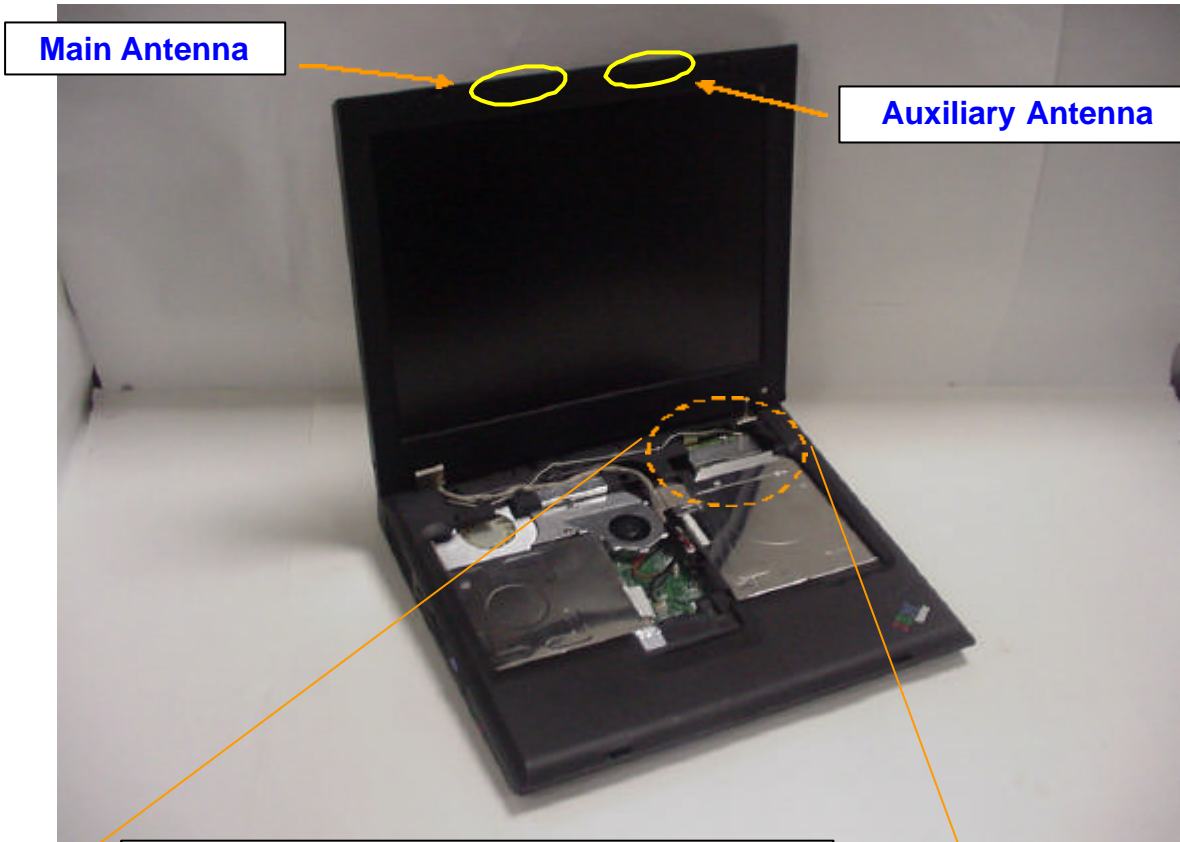
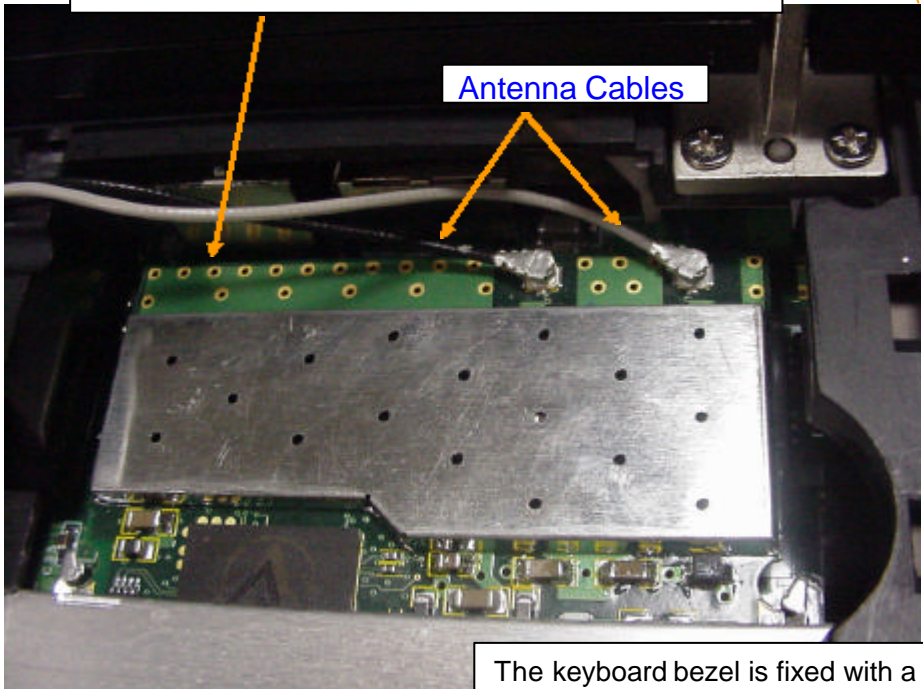


Internal Photos



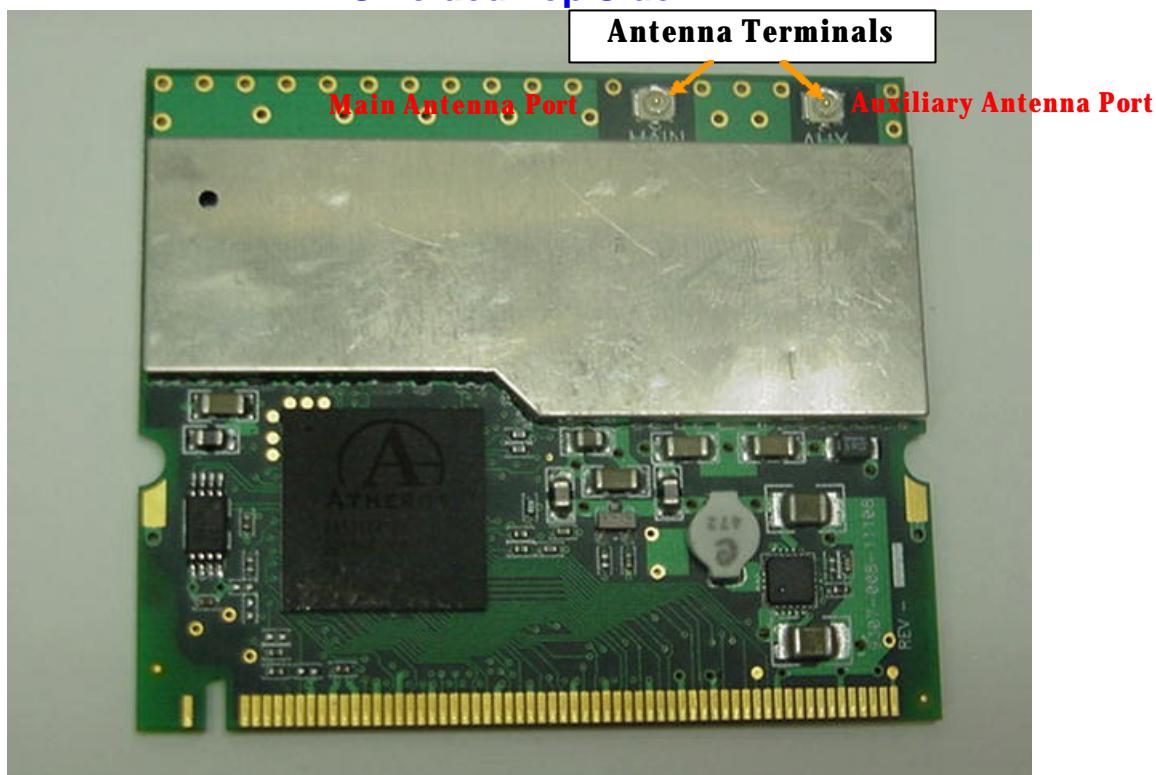
IEEE802.11a/b Wireless LAN Mini-PCI Card



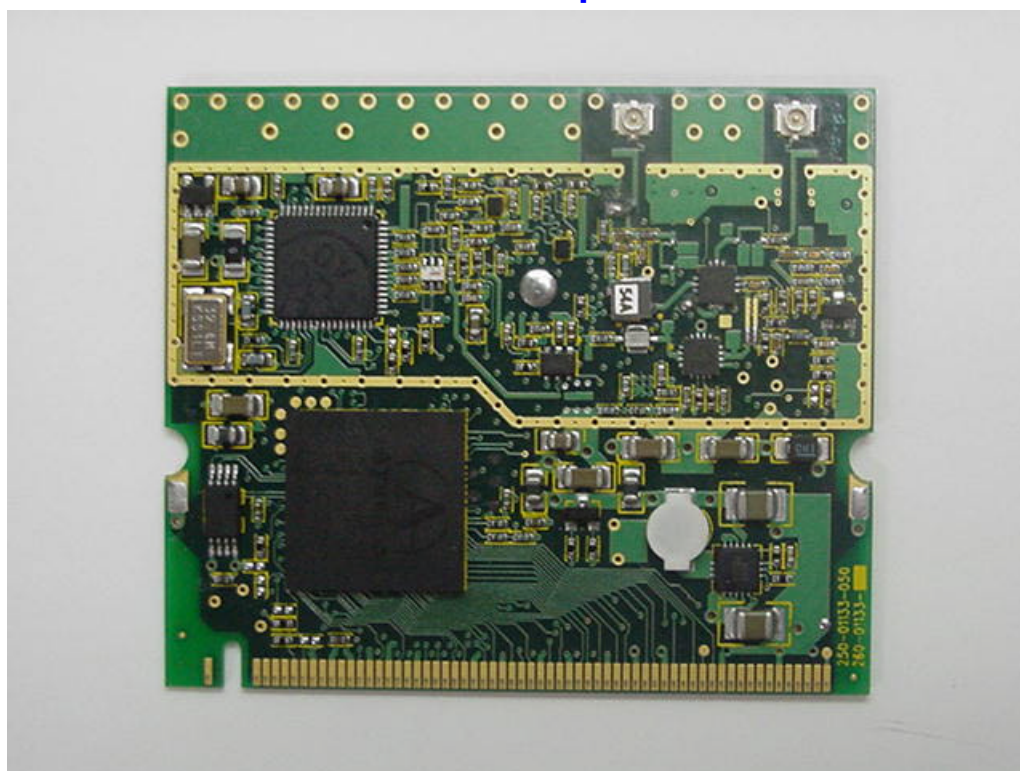
The keyboard bezel is fixed with a special screw so that the wireless module is not removed. See Exhibit "Circuitry Description".

IBM Dual-Band 11a/b Wi-Fi Wireless Mini PCI adapter

Shielded Top Side



Unshielded Top Side



Shielded Back Side

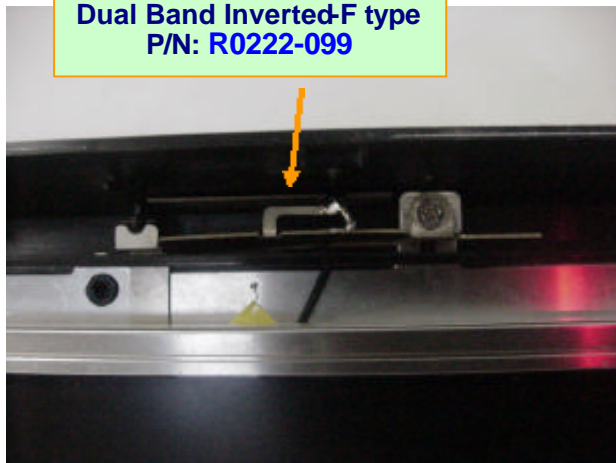


Unshielded Back Side

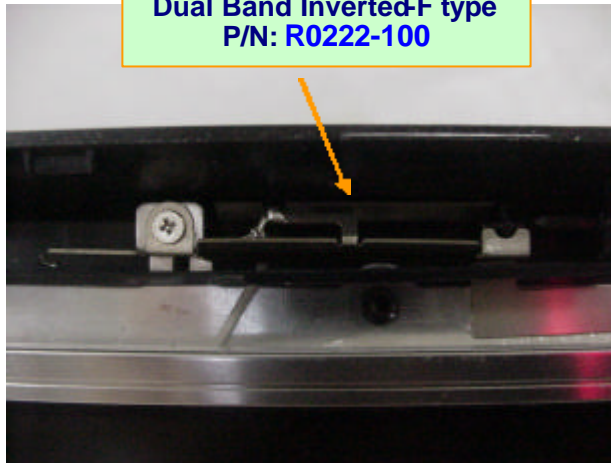


Antenna Locations

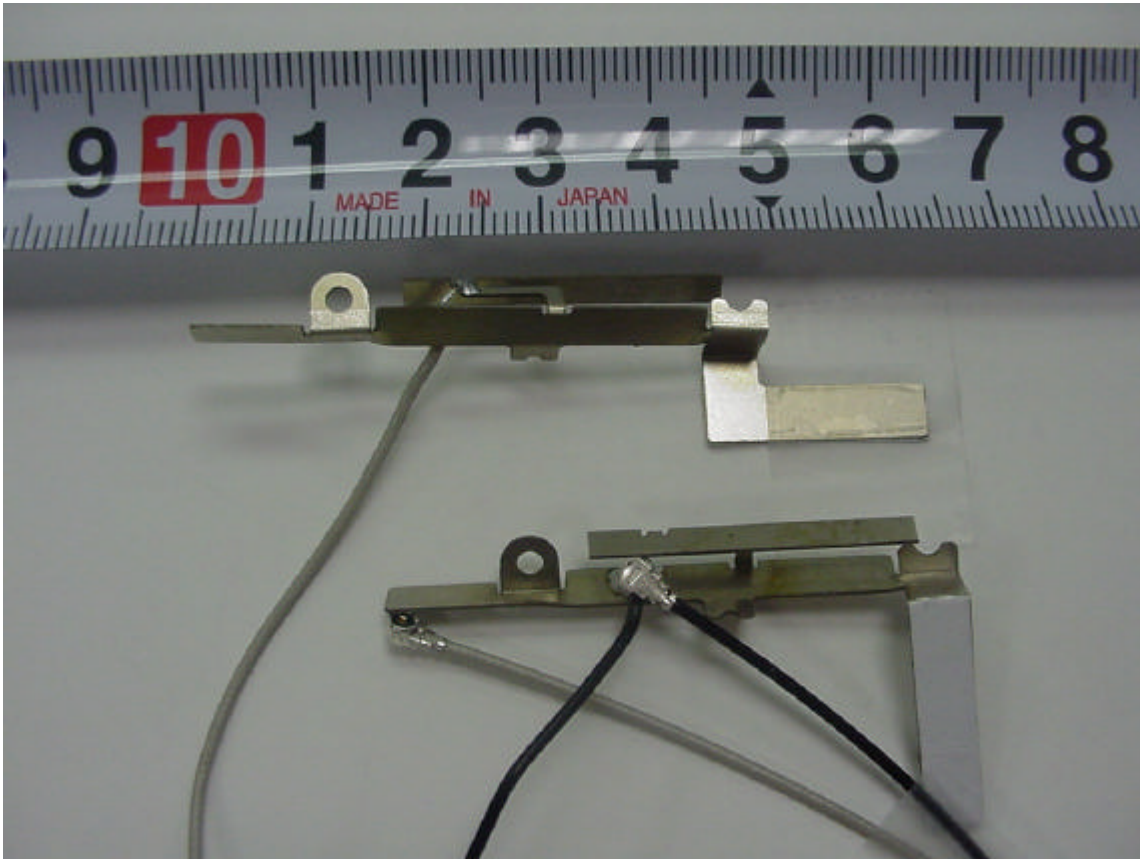
Main antenna
Dual Band Inverted-F type
P/N: R0222-099



Auxiliary antenna
Dual Band Inverted-F type
P/N: R0222-100



Antennas



Auxiliary Antenna (Right)
Manufacturer: SmartAnt Telecom Co., Ltd.
Parts Number: R0222-100
Dual Band Inverted-F type antenna
Cable: coax 610mm

Main Antenna (Left)
Manufacturer: SmartAnt Telecom Co., Ltd.
Parts Number: R0222-099
Dual Band Inverted-F type antenna
Cable: coax 570mm