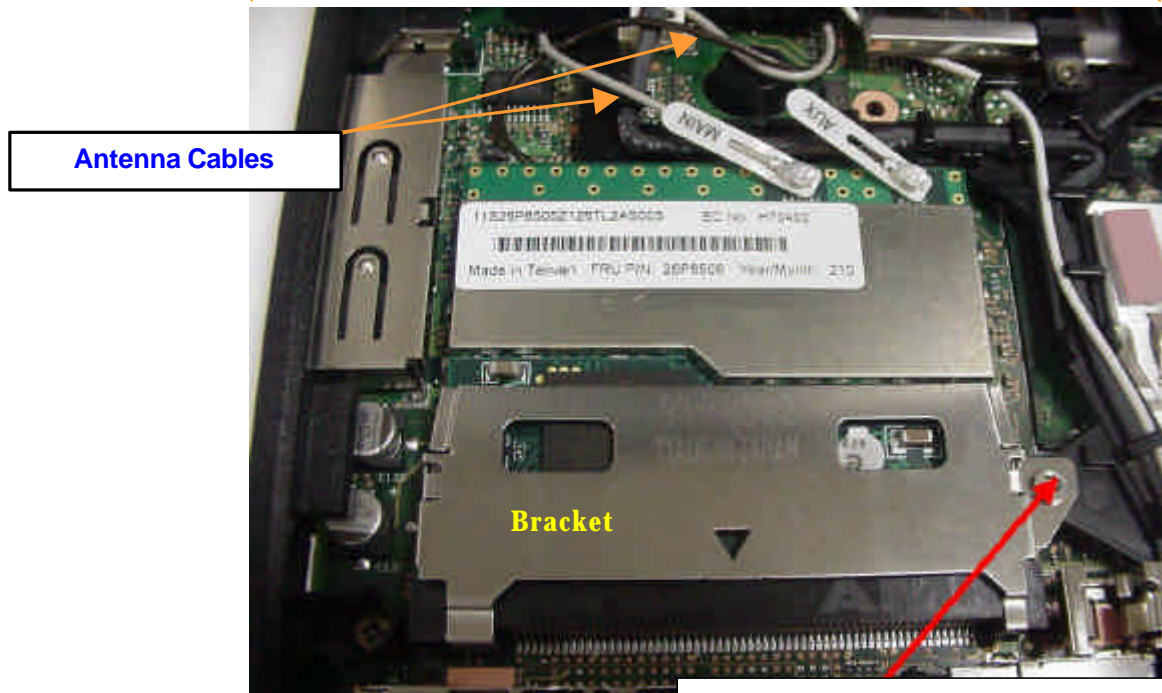
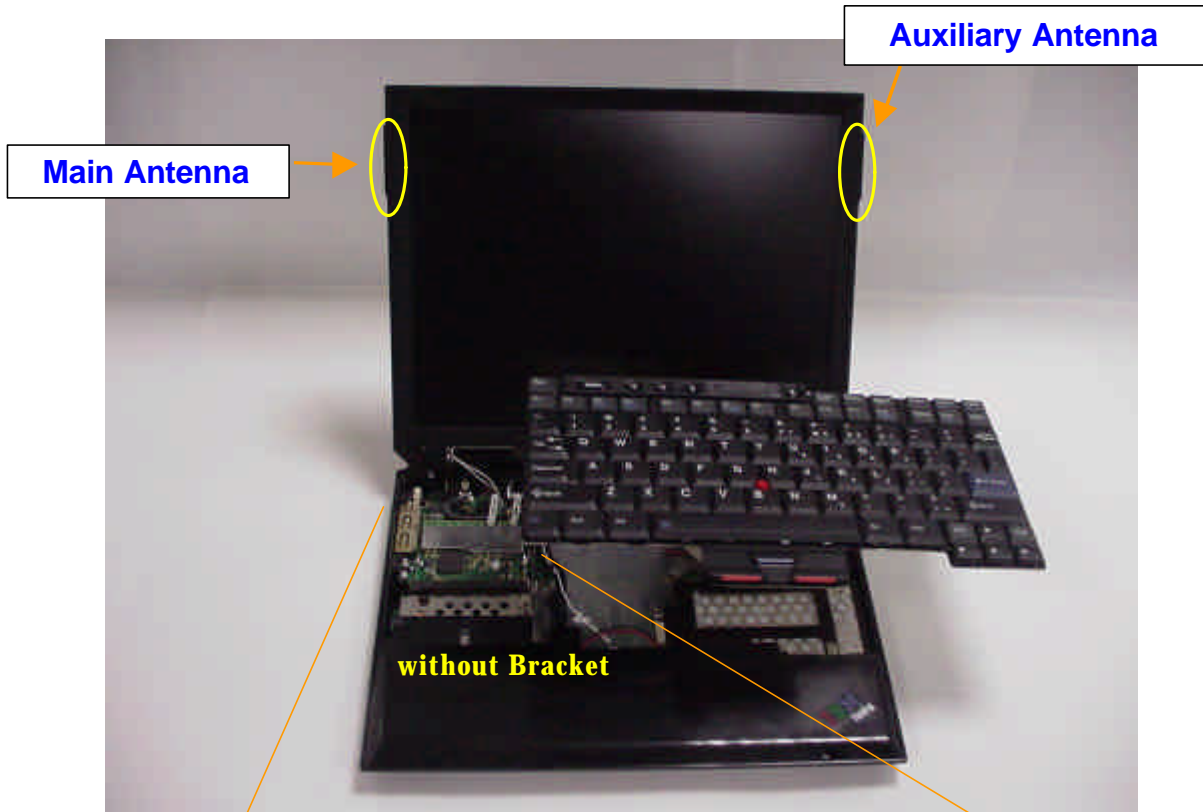


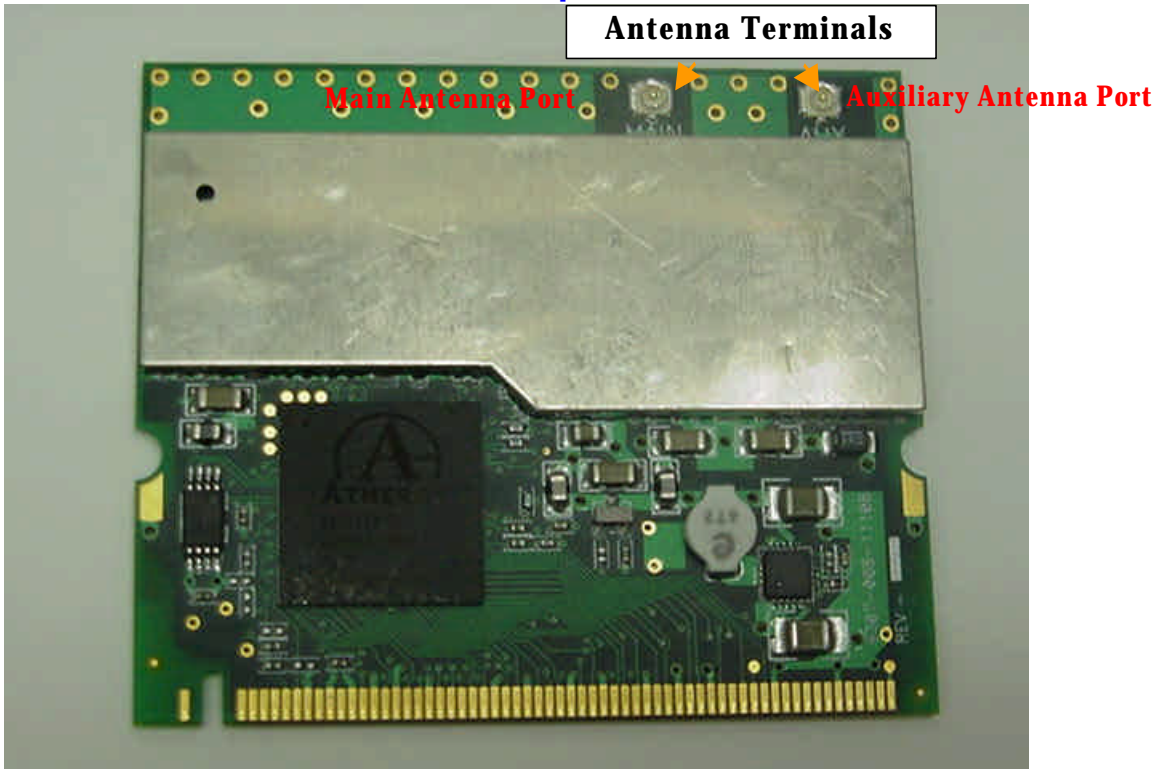
Internal Photos



The bracket is fixed with a **special screw** so that the wireless module is not removed.

IBM Dual-Band 11a/b Wi-Fi Wireless Mini PCI adapter

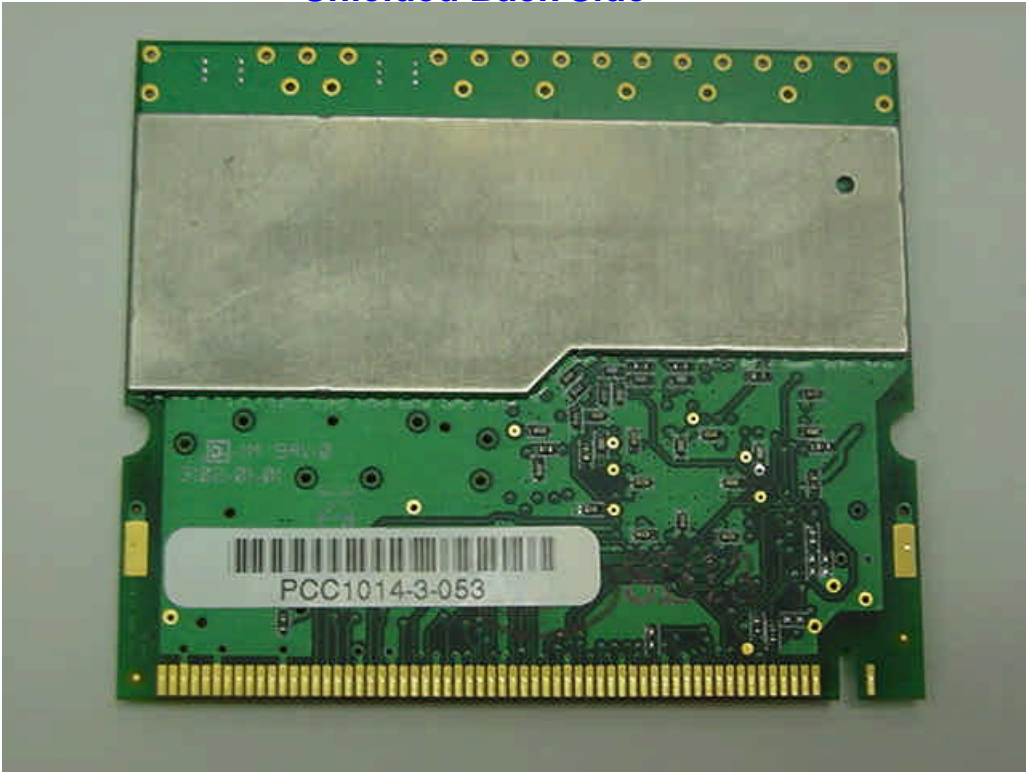
Shielded Top Side



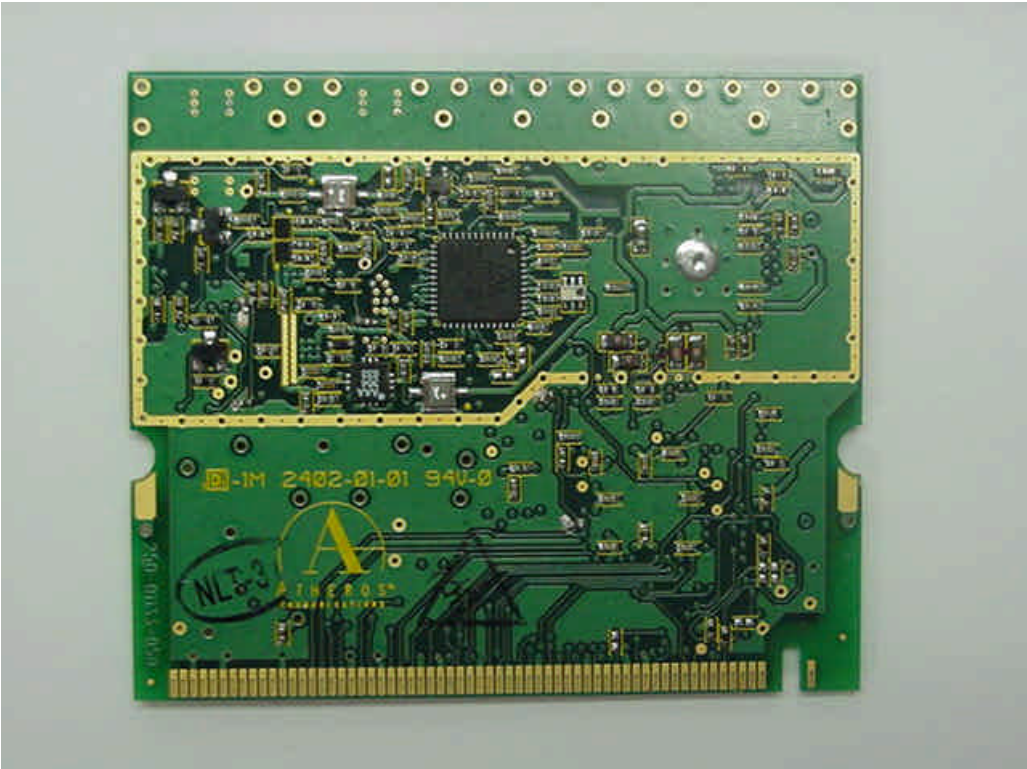
Unshielded Top Side



Shielded Back Side

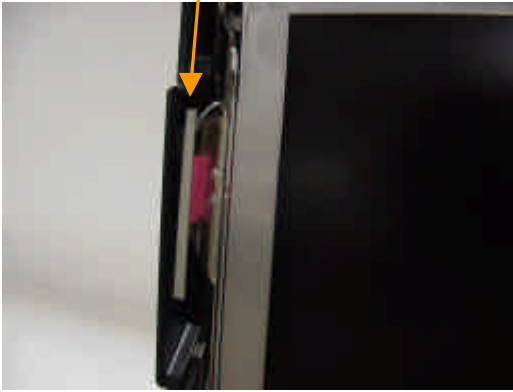


Unshielded Back Side

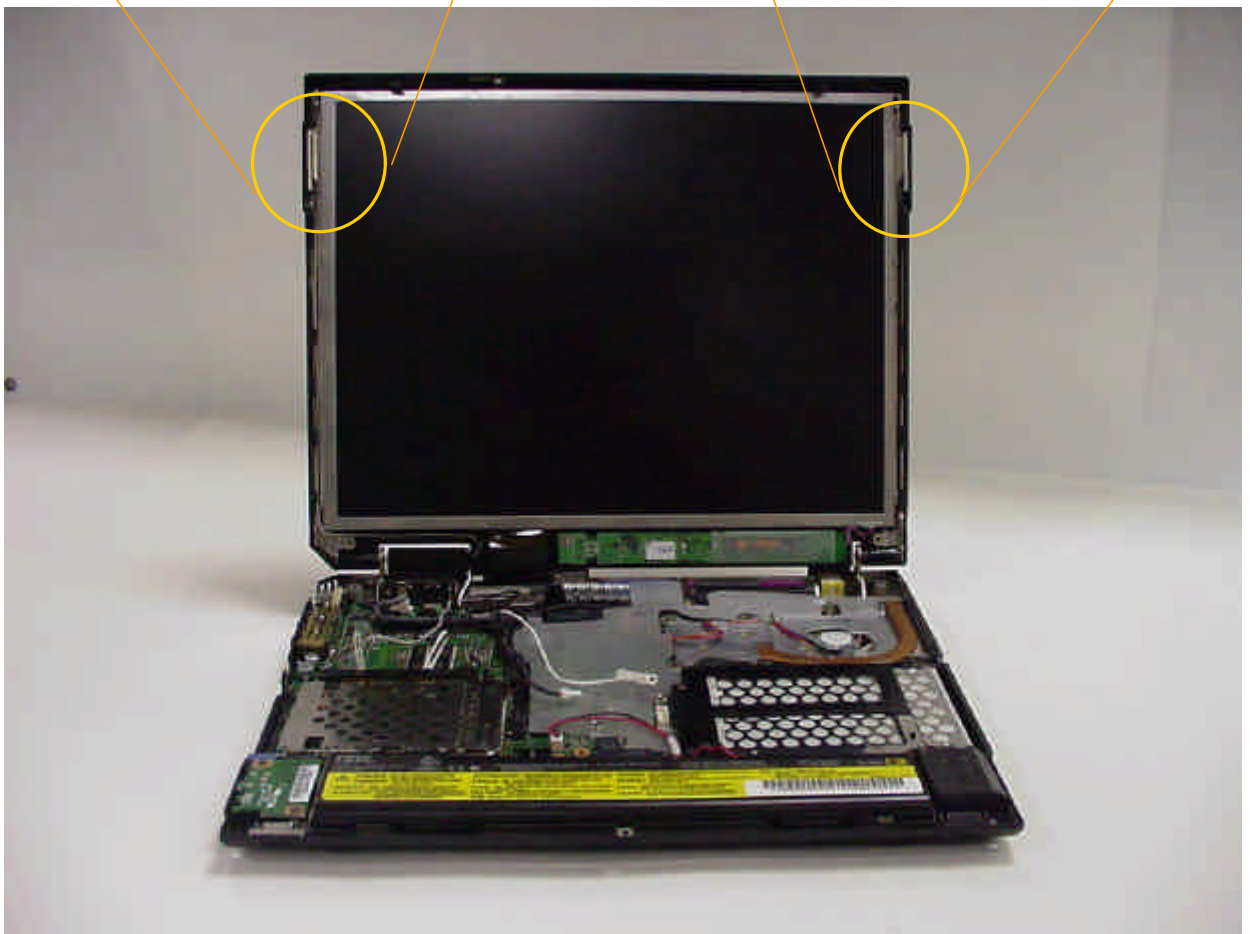


Antenna Locations

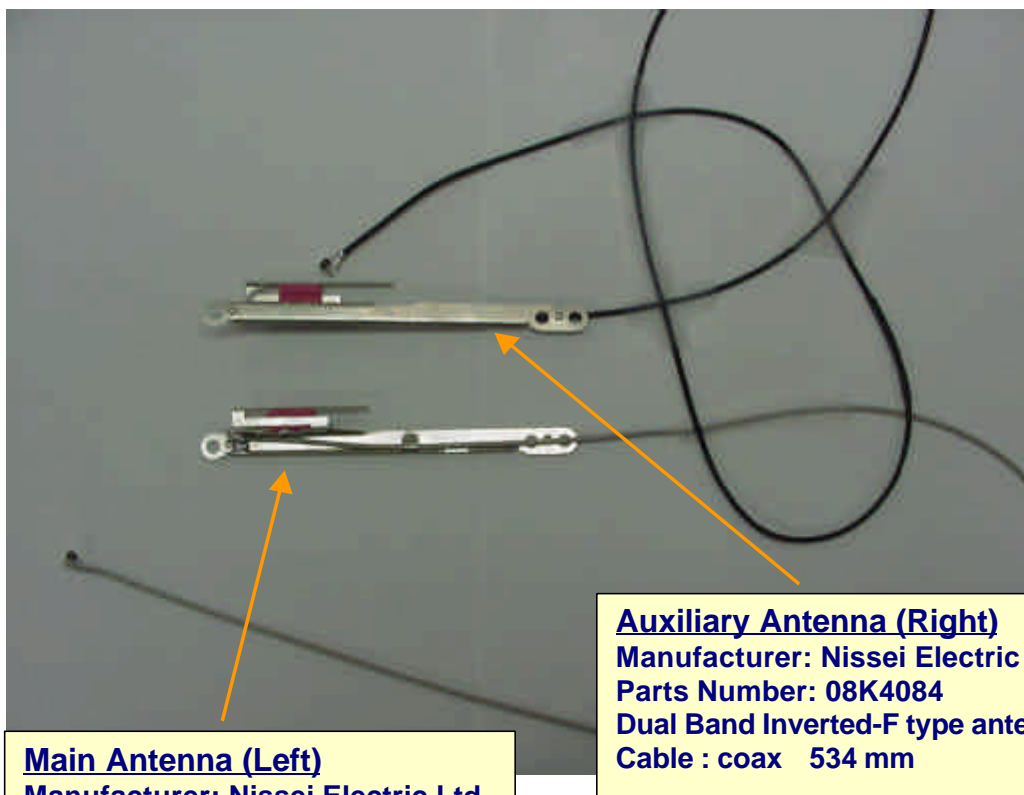
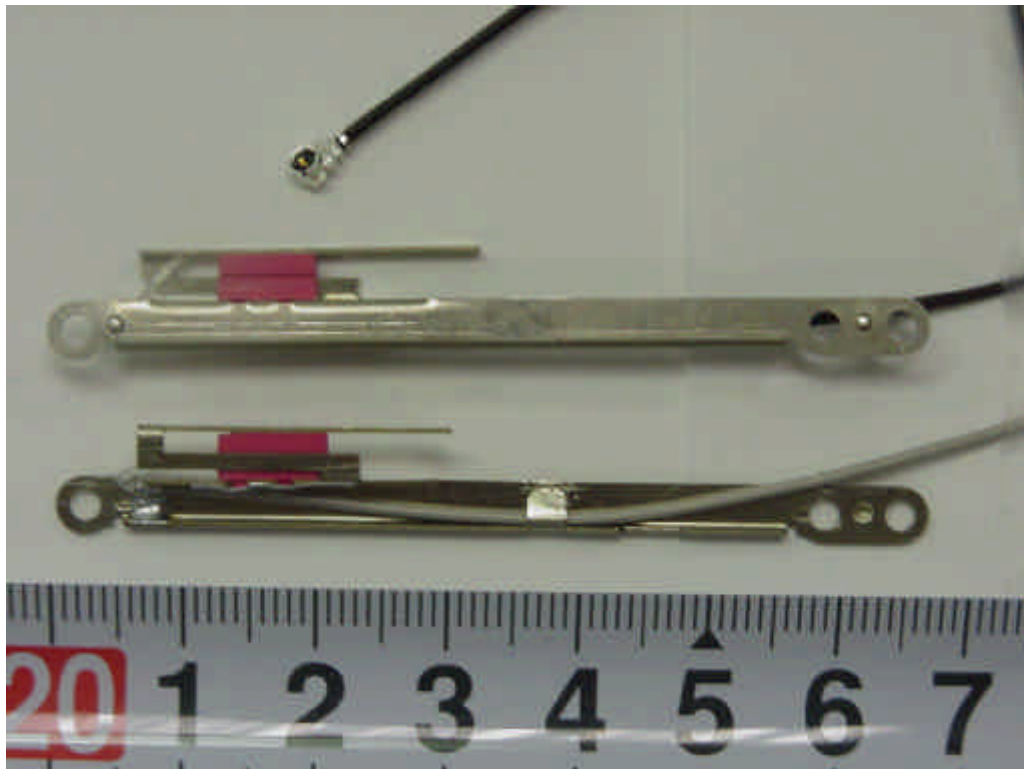
Main antenna
Dual Band Inverted-F type
P/N: 08K4083



Auxiliary antenna
Dual Band Inverted-F type
P/N: 08K4084



Antennas (Dual-Band Inverted F type Antenna and Cable)



Main Antenna (Left)
Manufacturer: Nissei Electric Ltd.
Parts Number: 08K4083
Dual Band Inverted-F type antenna
Cable : coax 394 mm

Auxiliary Antenna (Right)
Manufacturer: Nissei Electric Ltd.
Parts Number: 08K4084
Dual Band Inverted-F type antenna
Cable : coax 534 mm