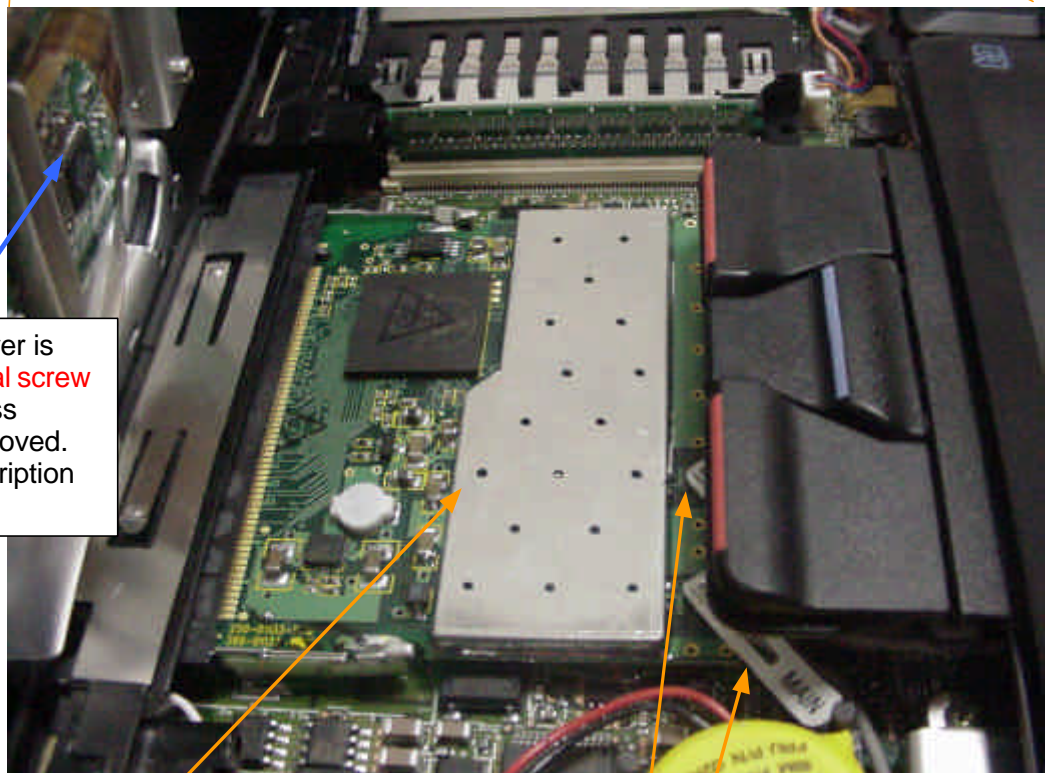
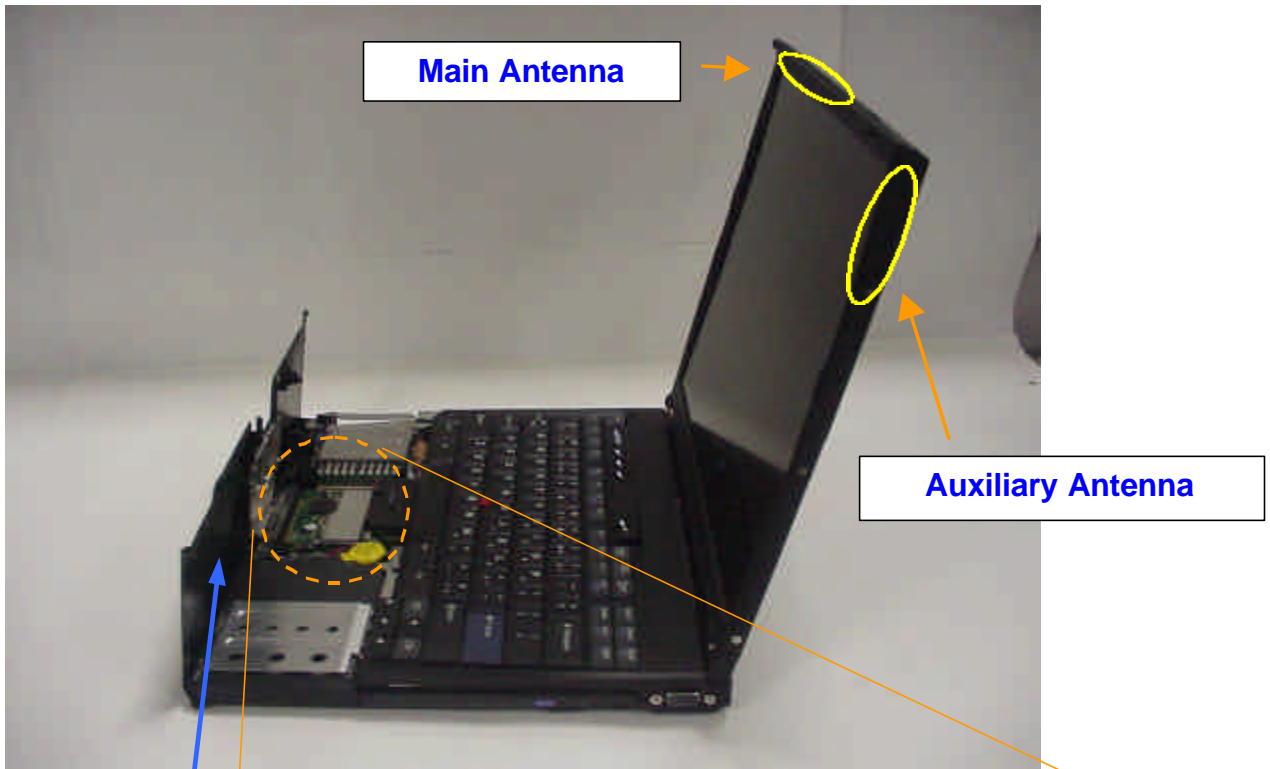


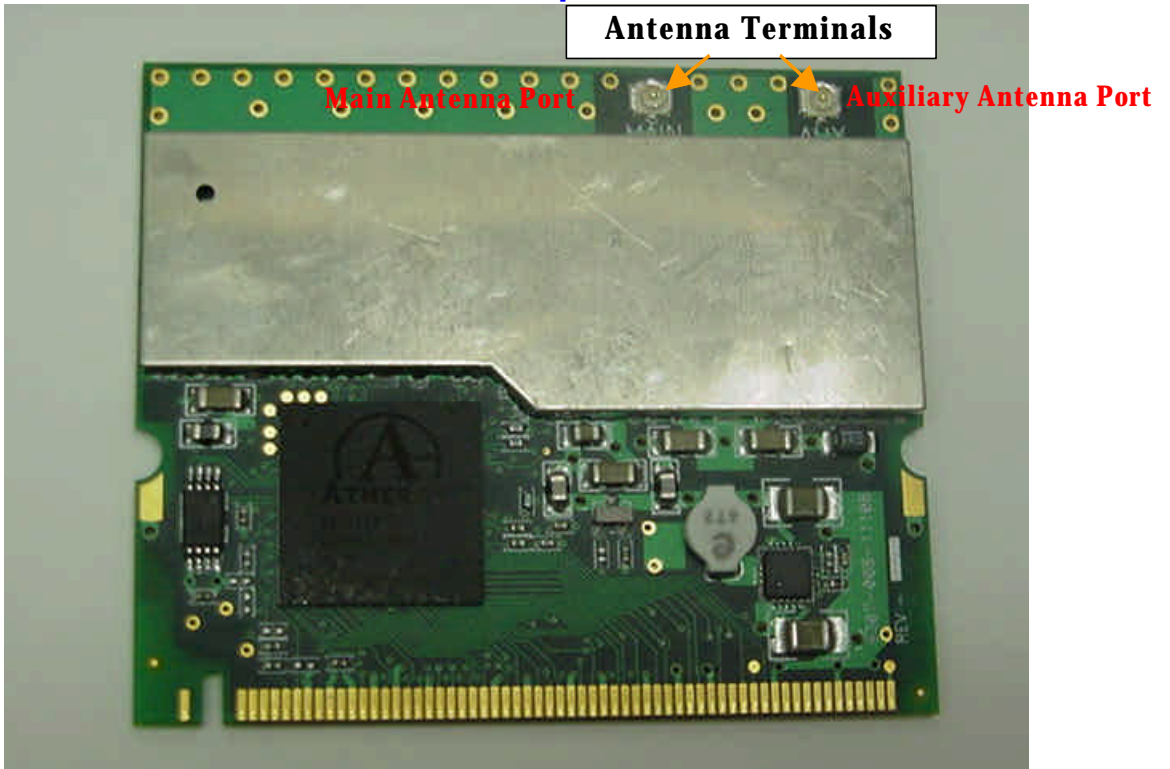
Internal Photos



The palm-rest cover is fixed with a **special screw** so that the wireless module is not removed. See circuitry description in detail.

IBM Dual-Band 11a/b Wi-Fi Wireless Mini PCI adapter

Shielded Top Side



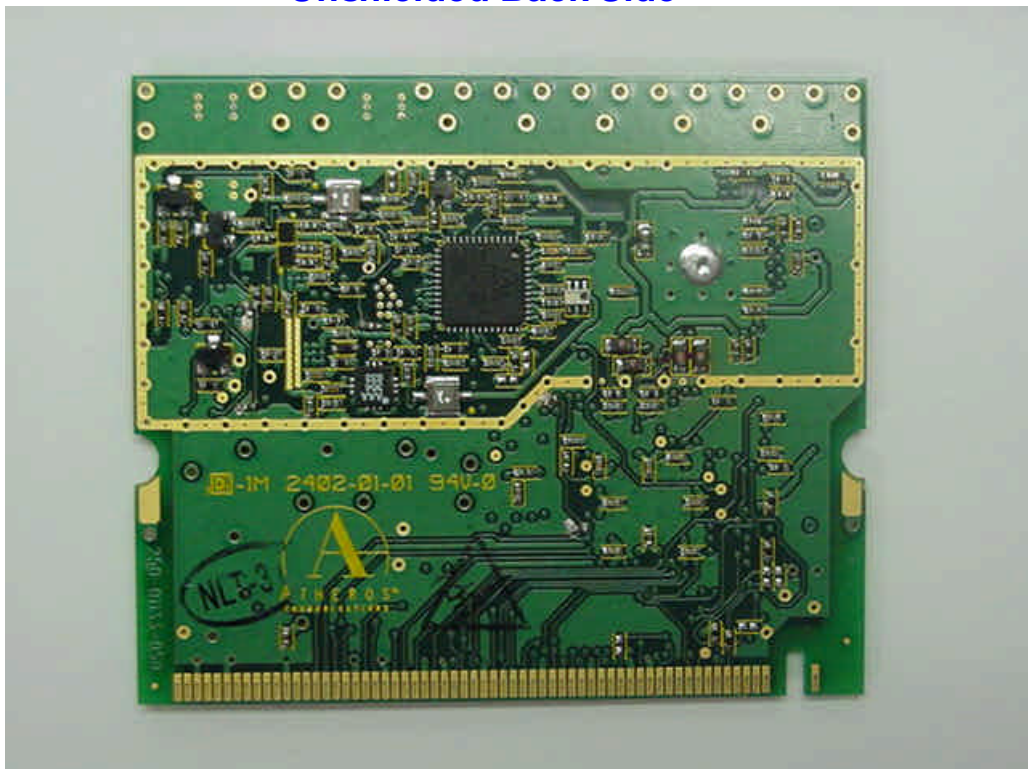
Unshielded Top Side



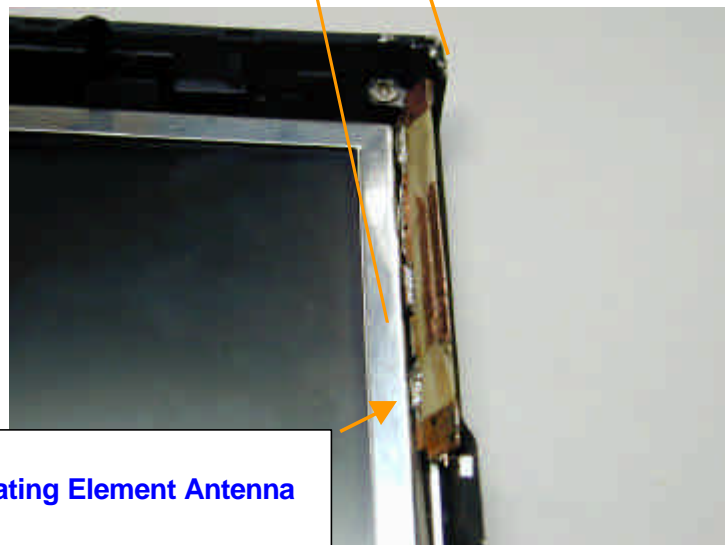
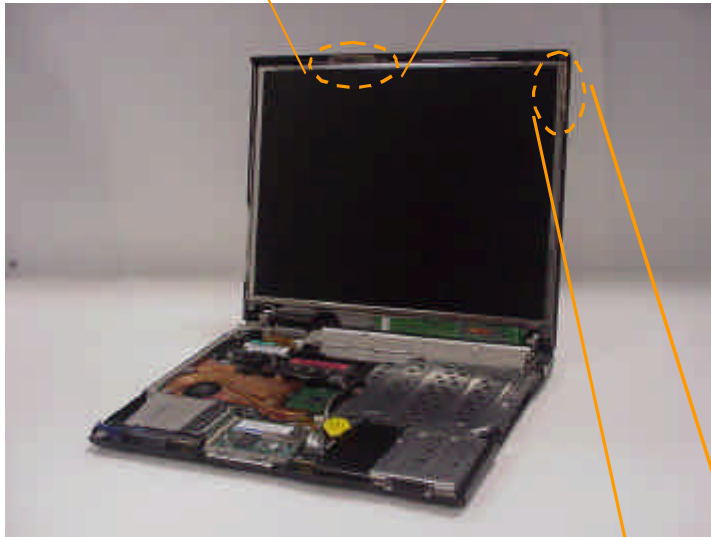
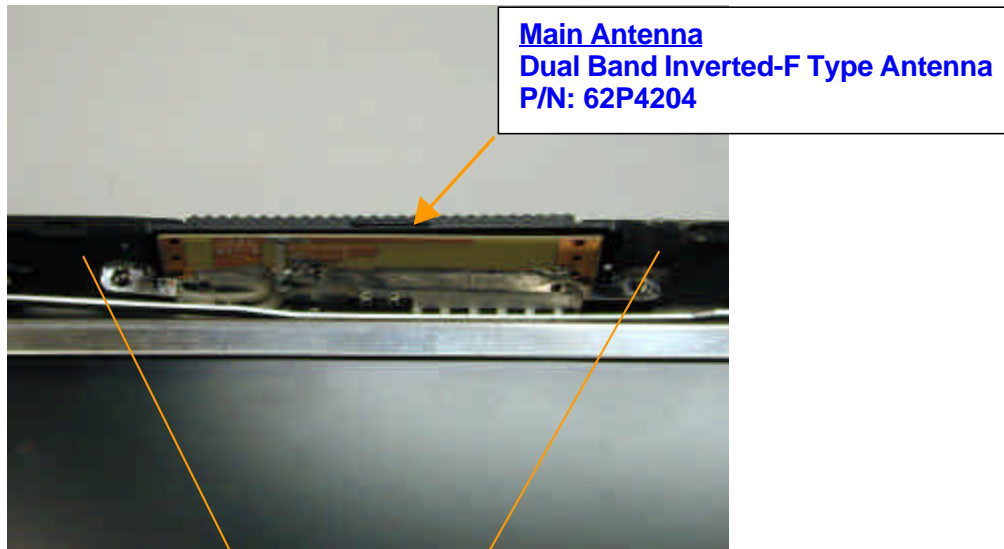
Shielded Back Side



Unshielded Back Side



Antenna Locations



Antennas

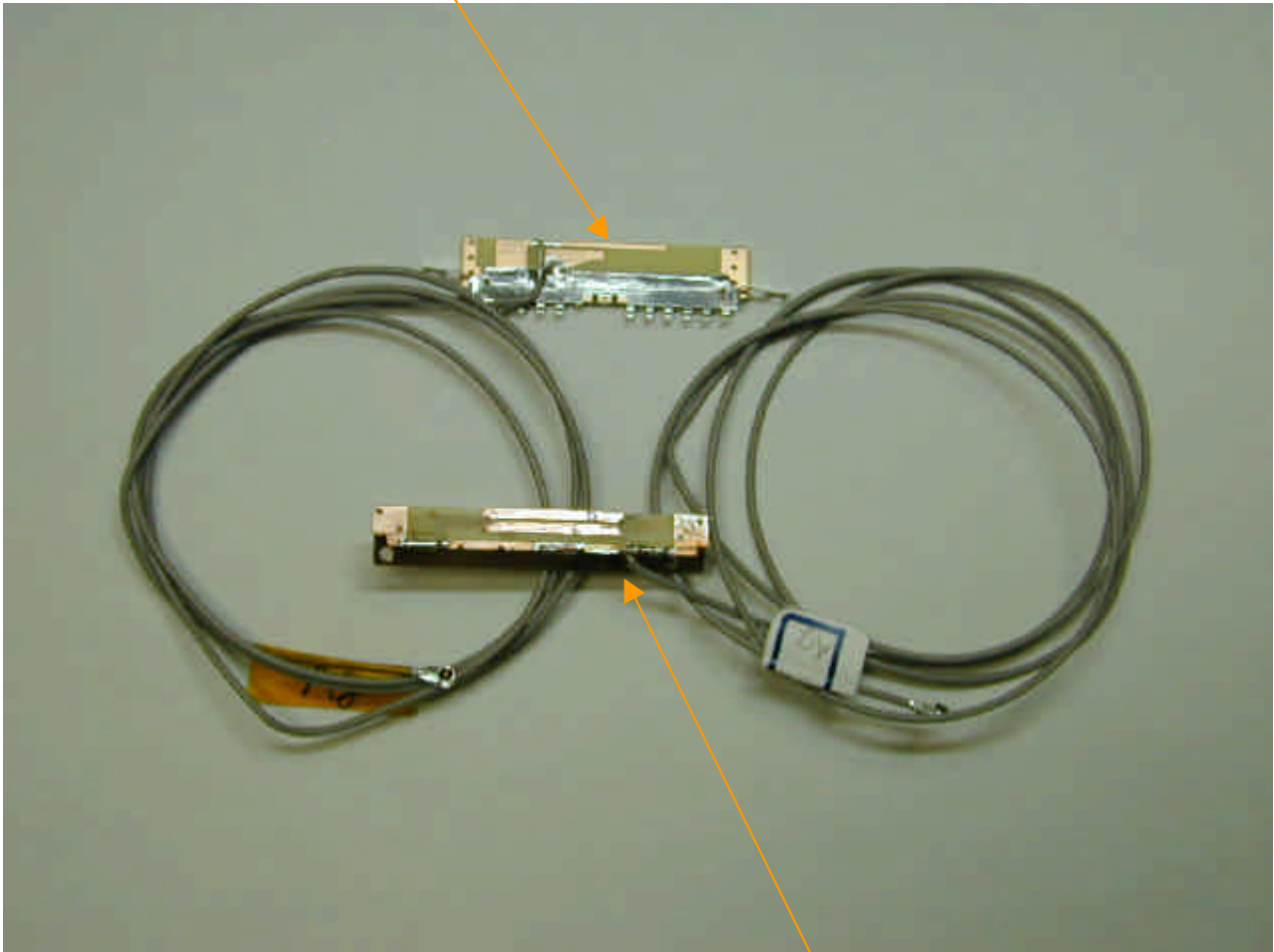
Main Antenna

Manufacturer: Faxconn Electronics Inc.

Parts Number: 62P4204

Dual Band Inverted-F type antenna

Cable: coax 740mm



Auxiliary Antenna

Manufacturer: Faxconn Electronics Inc.

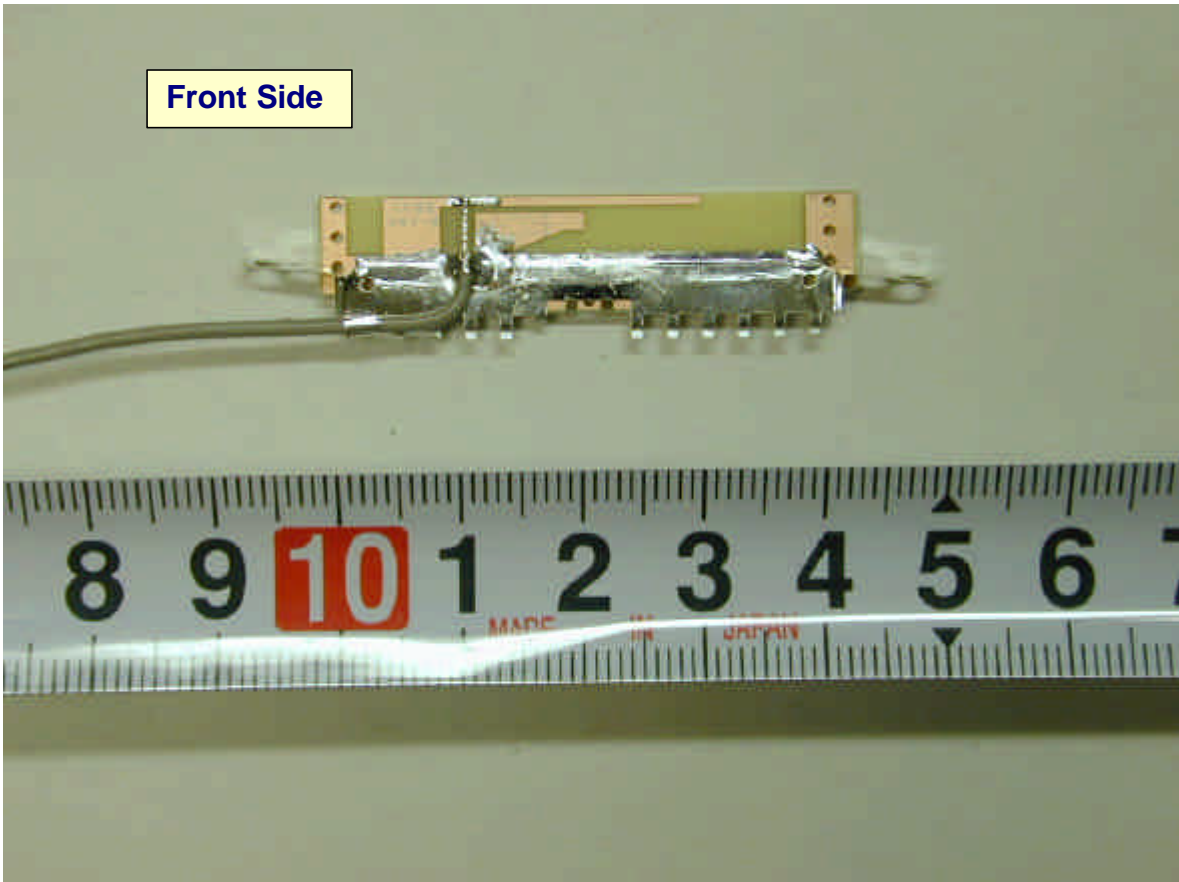
Parts Number: 62P4203

Dual-Band Coupled Floating Element Antenna

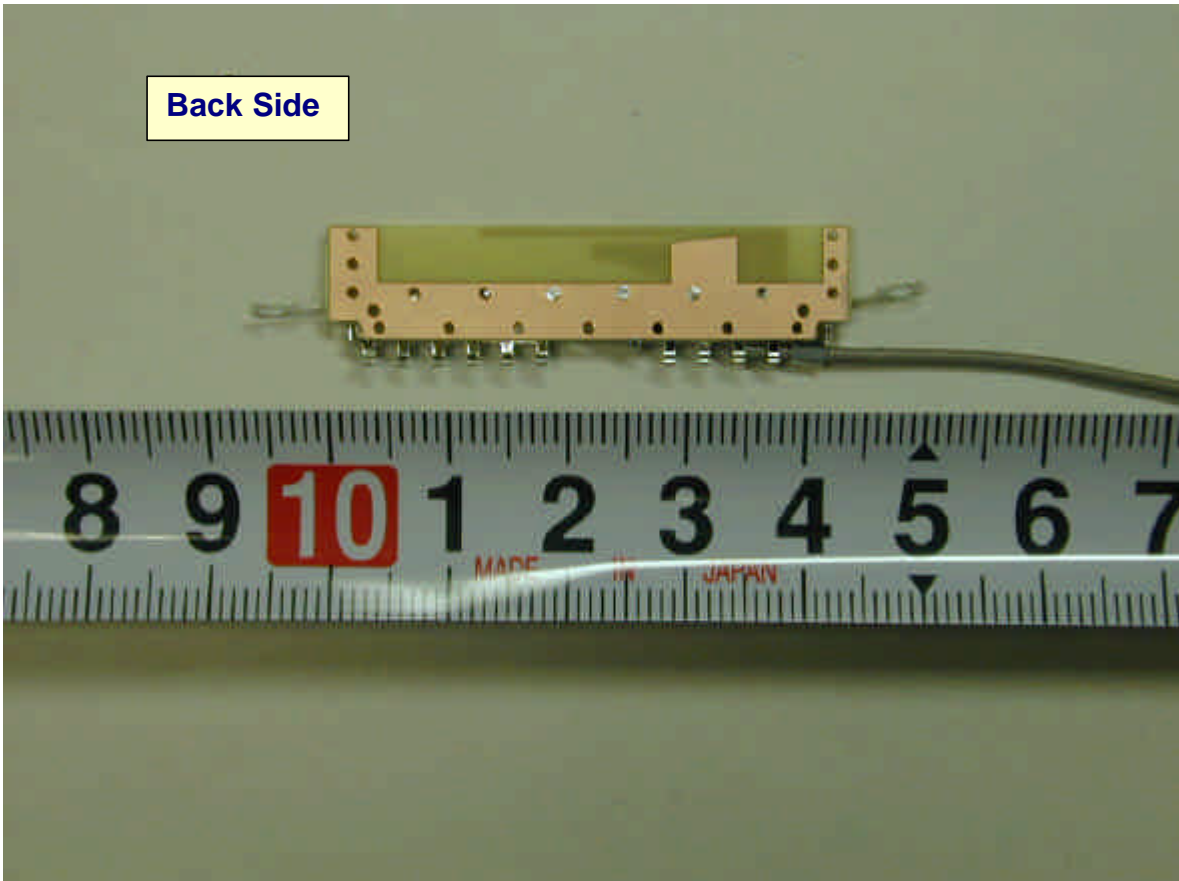
Cable : coax 860mm

Main Antenna

Front Side



Back Side



Auxiliary Antenna

