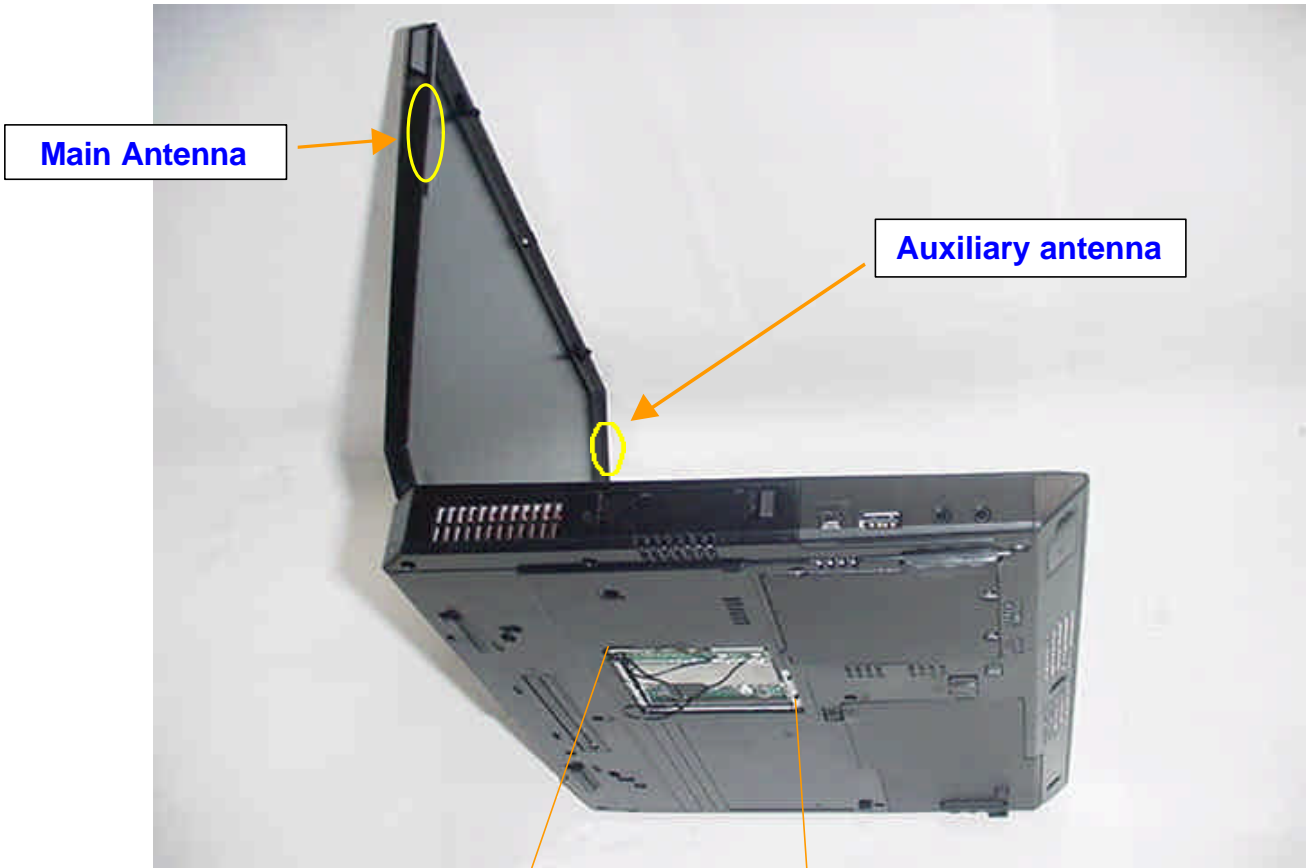
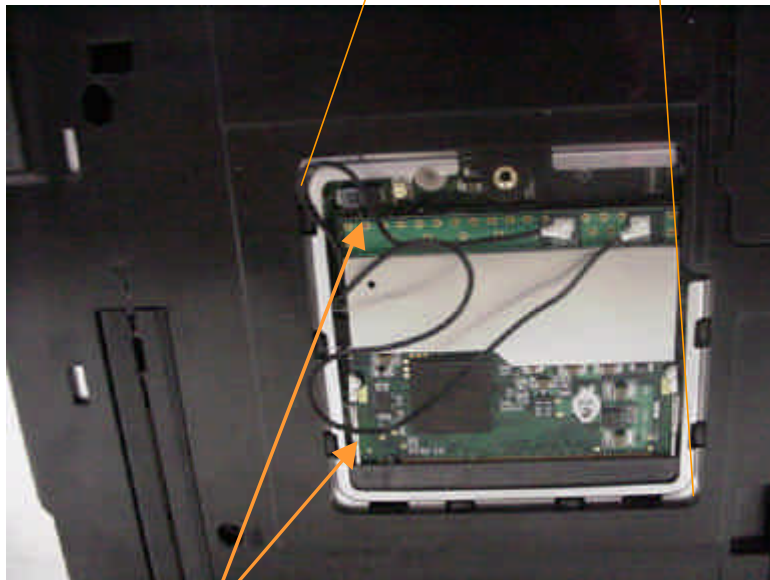


# Internal Photos



**Main Antenna**

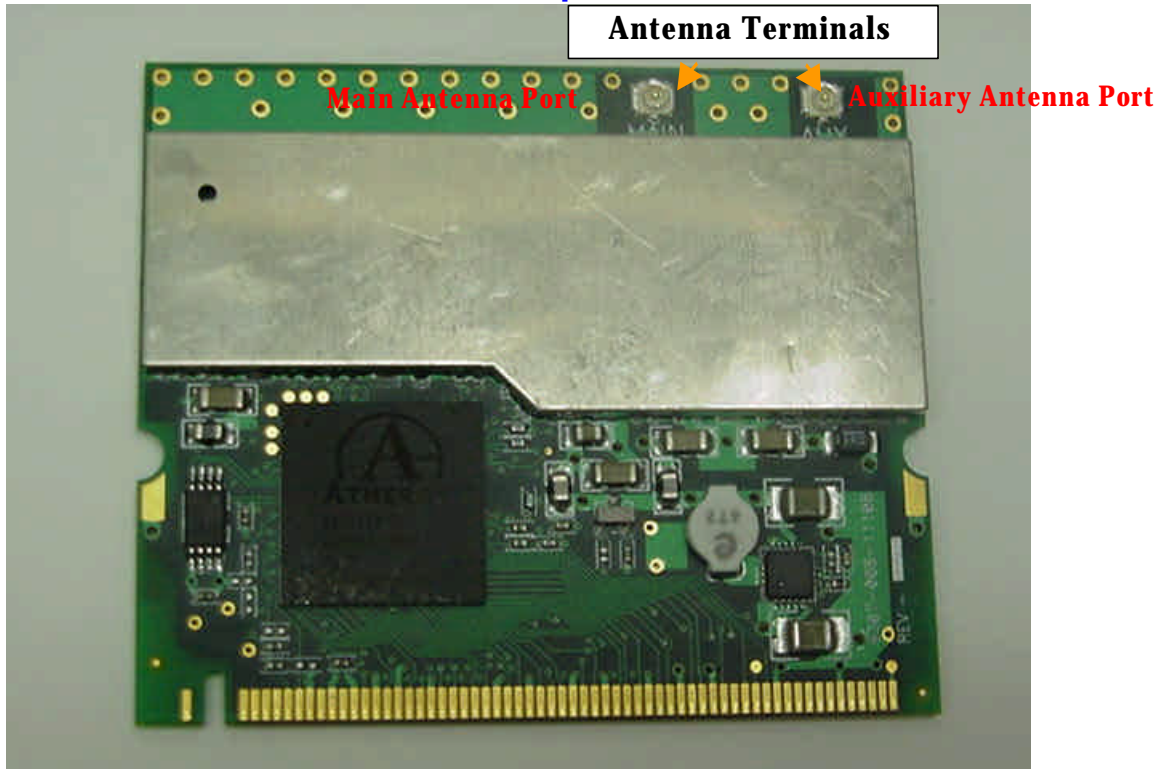
**Auxiliary antenna**



**Antenna Cables**

## IBM Dual-Band Wi-Fi Wireless Mini-PCI adapter

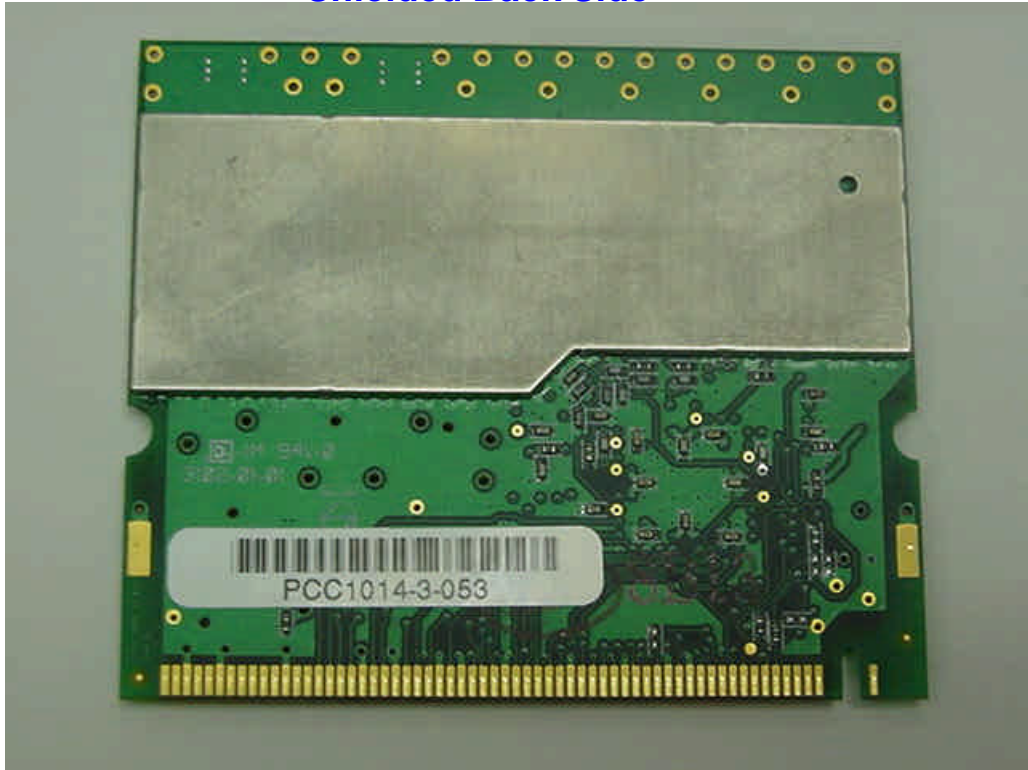
### Shielded Top Side



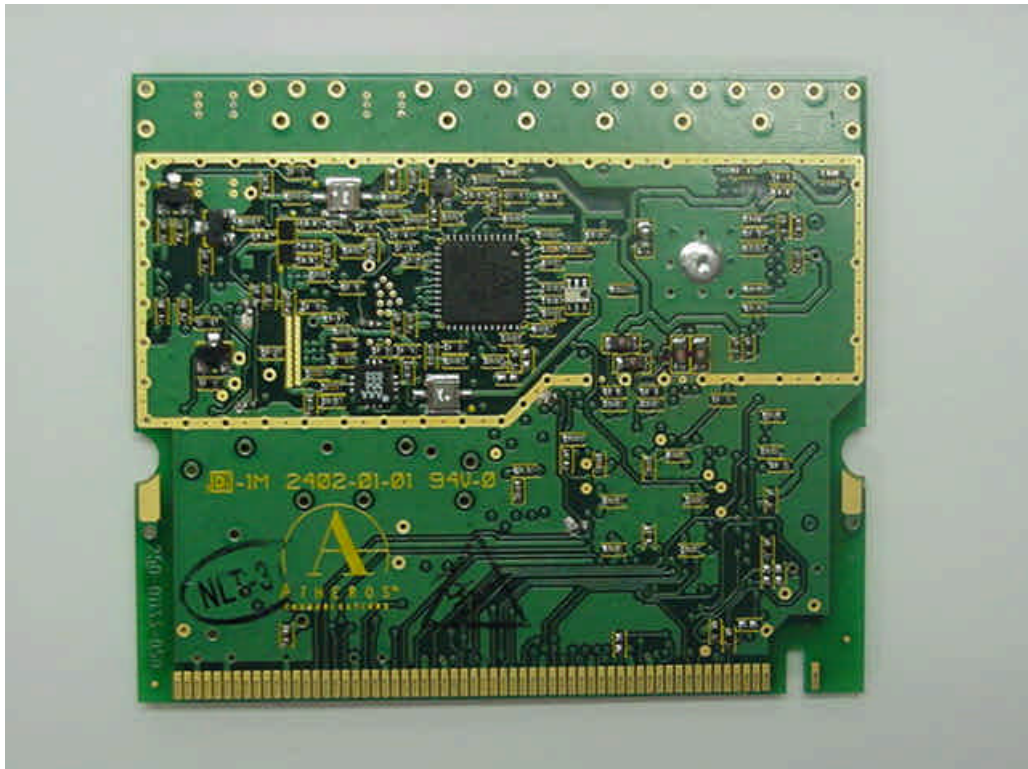
### Unshielded Top Side



**Shielded Back Side**



**Unshielded Back Side**



## Antenna Locations

### LCD 13/14 inch Model

**Main antenna**  
Dual Band Inverted-F type  
P/N: 3301BZ9076A



**Auxiliary antenna**  
Dual Band Inverted-F type  
P/N: 3301BZ9077A



**LCD 15 inch Model**

**Main antenna  
Dual Band Inverted-F type  
P/N: 3301BZ9078A**

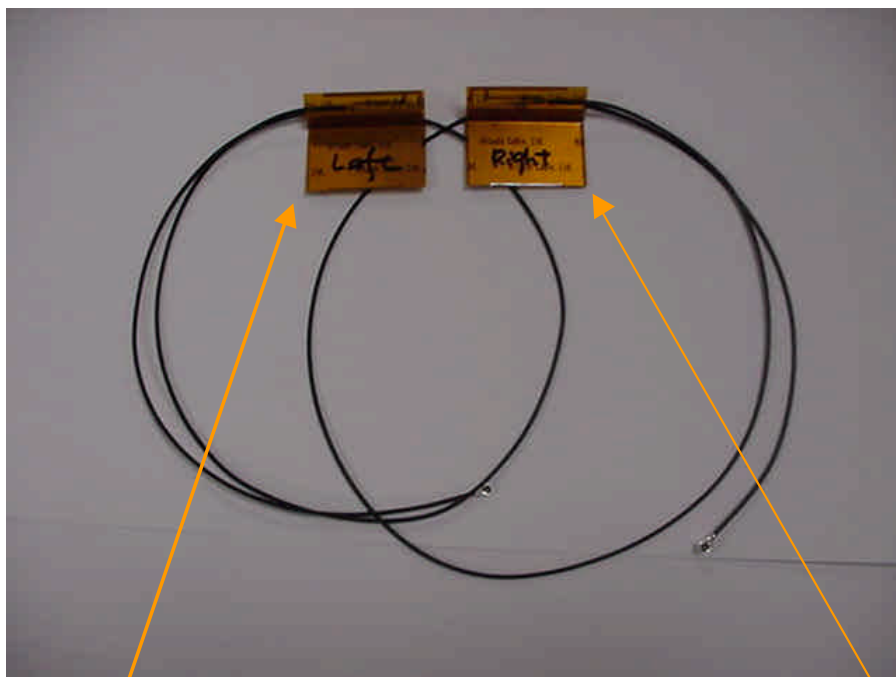
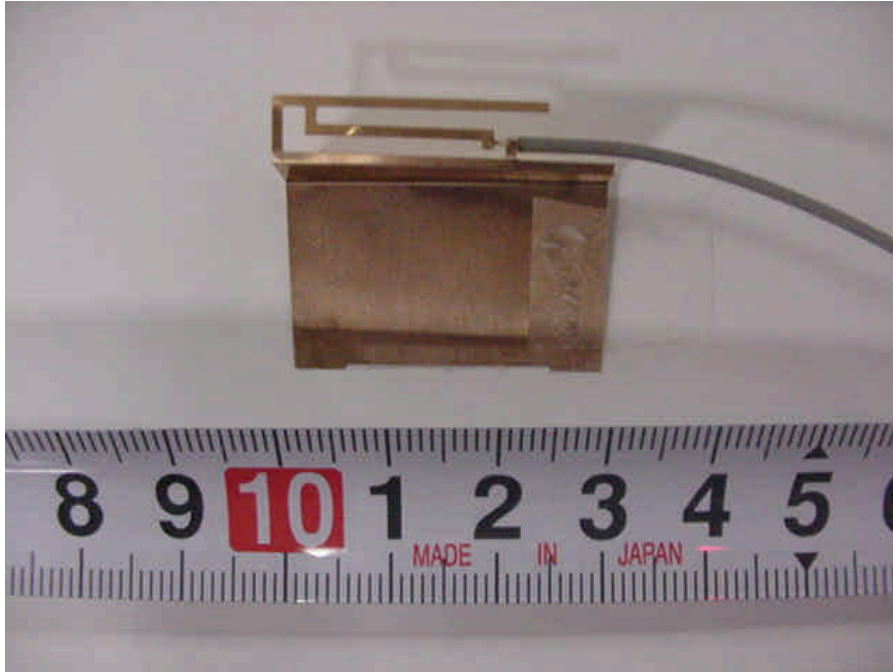


**Auxiliary antenna  
Dual Band Inverted-F type  
P/N: 3301BZ9079A**



## Antenna (Dual-Band Inverted F Type Antenna and Cable)

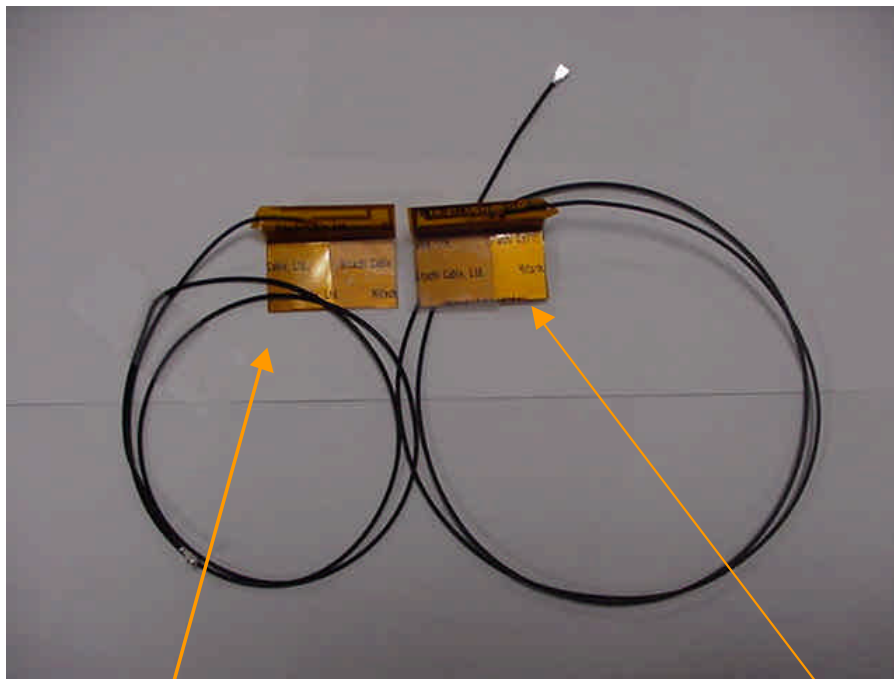
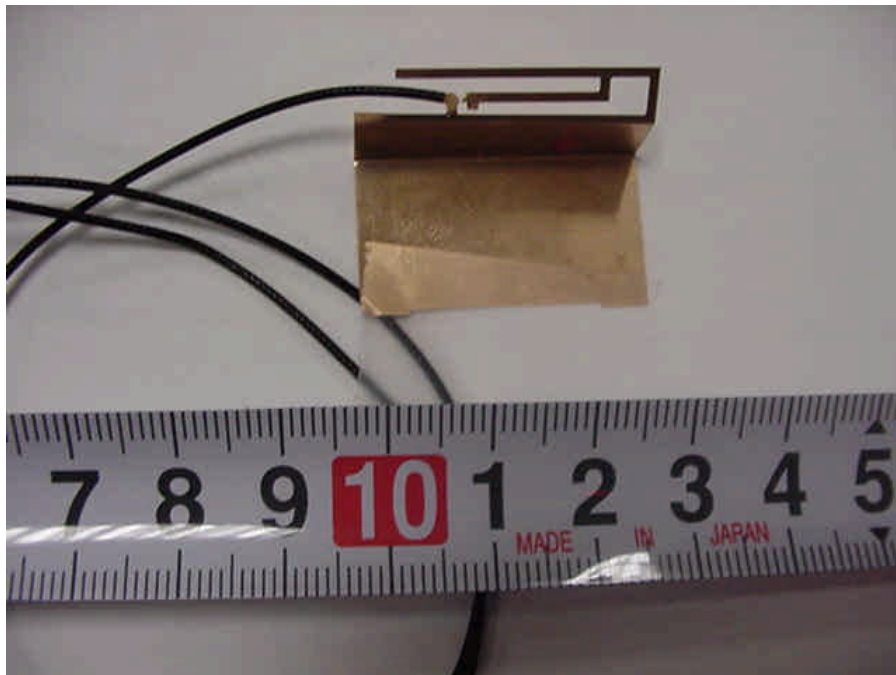
### LCD 13/14 inch Model



**Main Antenna (Left)**  
Manufacturer: Hitachi Cable Ltd.  
Parts Number: 3301BZ9076A  
Dual Band Inverted-F type antenna  
Cable : coax 530 mm

**Auxiliary Antenna (Right)**  
Manufacturer: Hitachi Cable Ltd.  
Parts Number: 3301BZ9077A  
Dual Band Inverted-F type antenna  
Cable : coax 640 mm

**LCD 15 inch Model**



**Main Antenna (Left)**  
Manufacturer: Hitachi Cable Ltd.  
Parts Number: 3301BZ9078A  
Dual Band Inverted-F type antenna  
Cable : coax 530 mm

**Auxiliary Antenna (Right)**  
Manufacturer: Hitachi Cable Ltd.  
Parts Number: 3301BZ9079A  
Dual Band Inverted-F type antenna  
Cable : coax 640 mm