

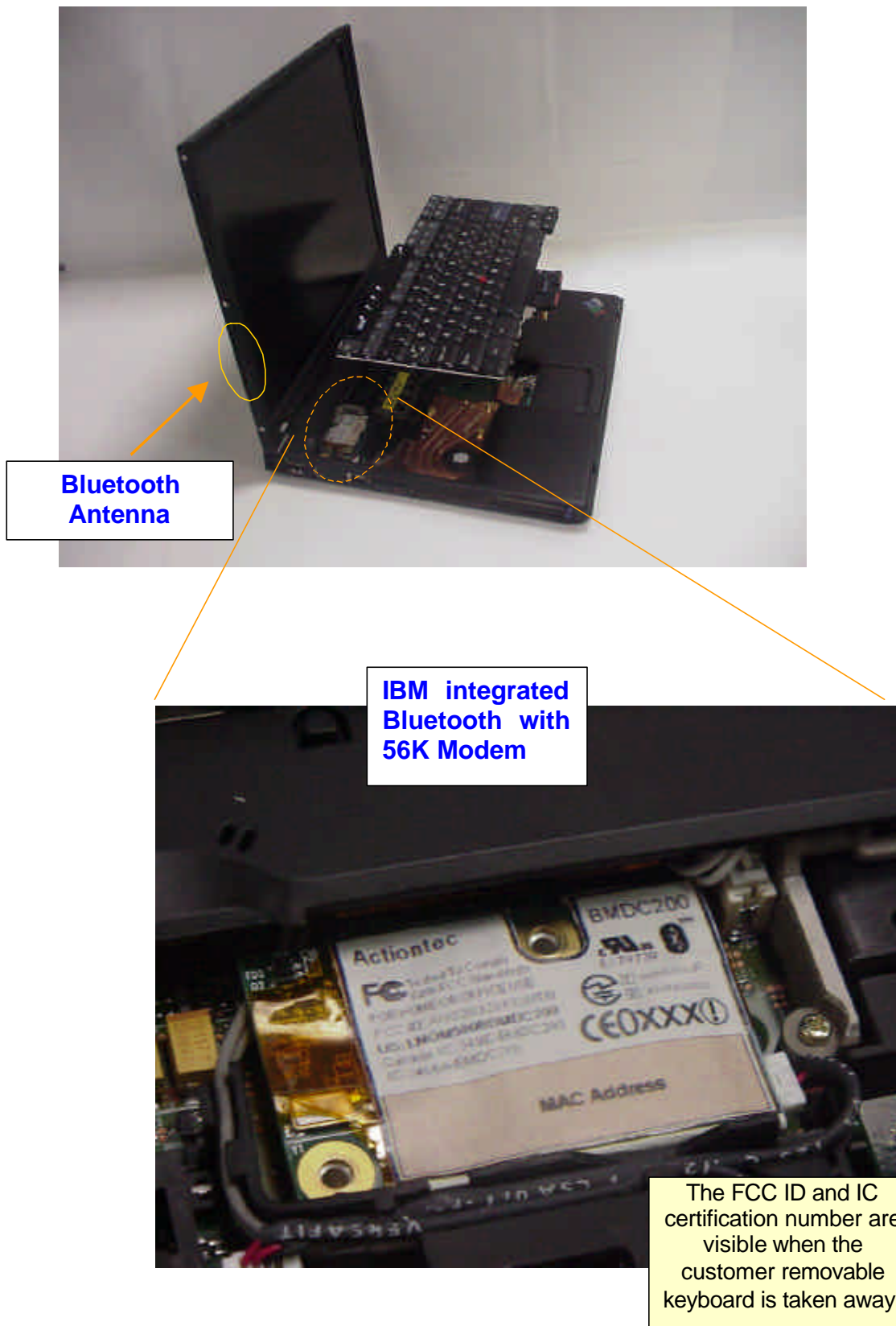
IBM Integrated Bluetooth with 56K Modem

Host Unit Information of ThinkPad T40 Series

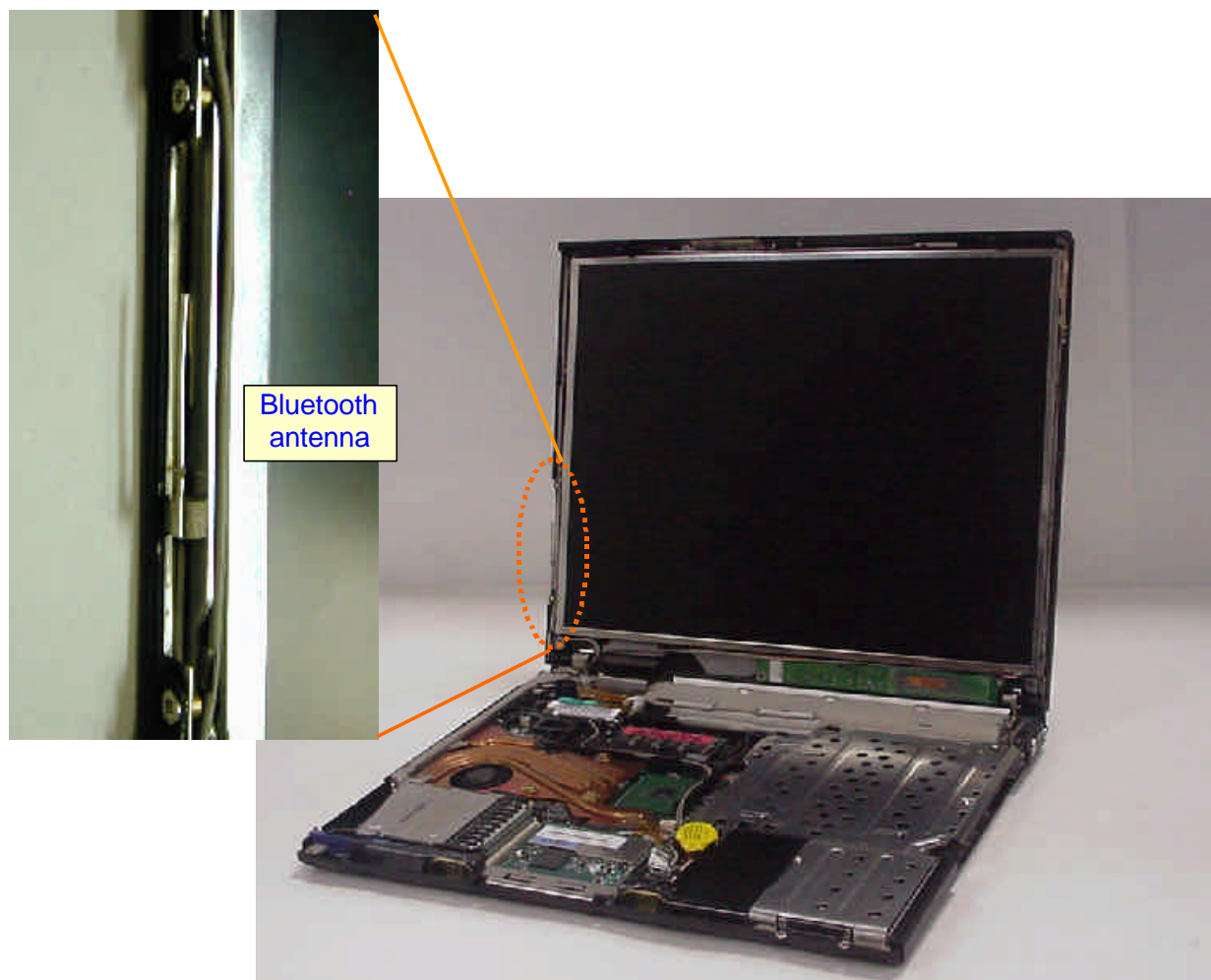
- **Host PC Information**
- **Host PC Labeling**
- **Antenna Information**

Host PC Information

The inverted F-figure type antenna is built in the left side of LCD panel.



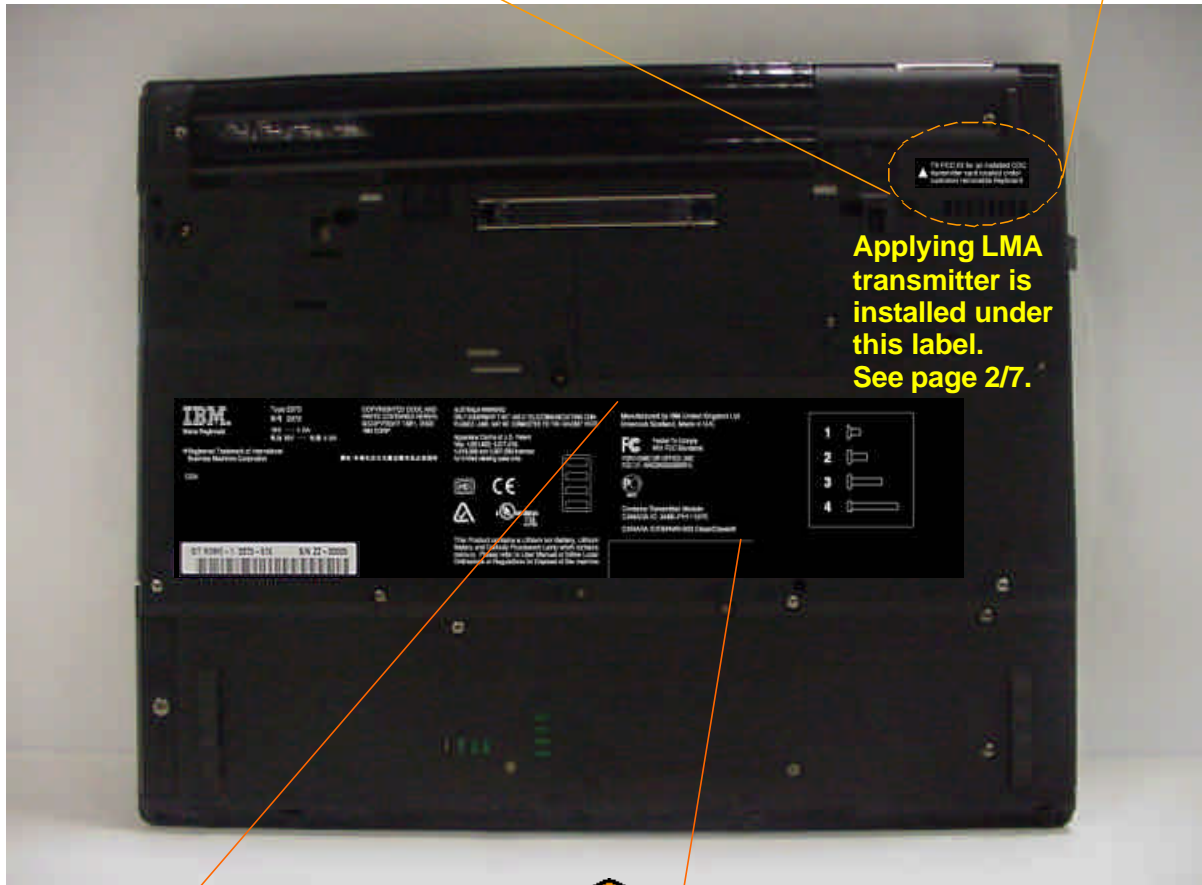
IBM ThinkPad T40 Series



Host PC Labeling



TX FCC ID for an installed CDC transmitter card located under customer removable Keyboard



Bottom view, Front

Manufactured by IBM United Kingdom Ltd.
Greenock Scotland, Made in U.K.



Tested To Comply
With FCC Standards

FOR HOME OR OFFICE USE
FCC ID : ANO20020302R1L



Contains Transmitter Module
CANADA IC: 349E-PH1107E

CANADA ICES/NMB-003 Class/ClasseB

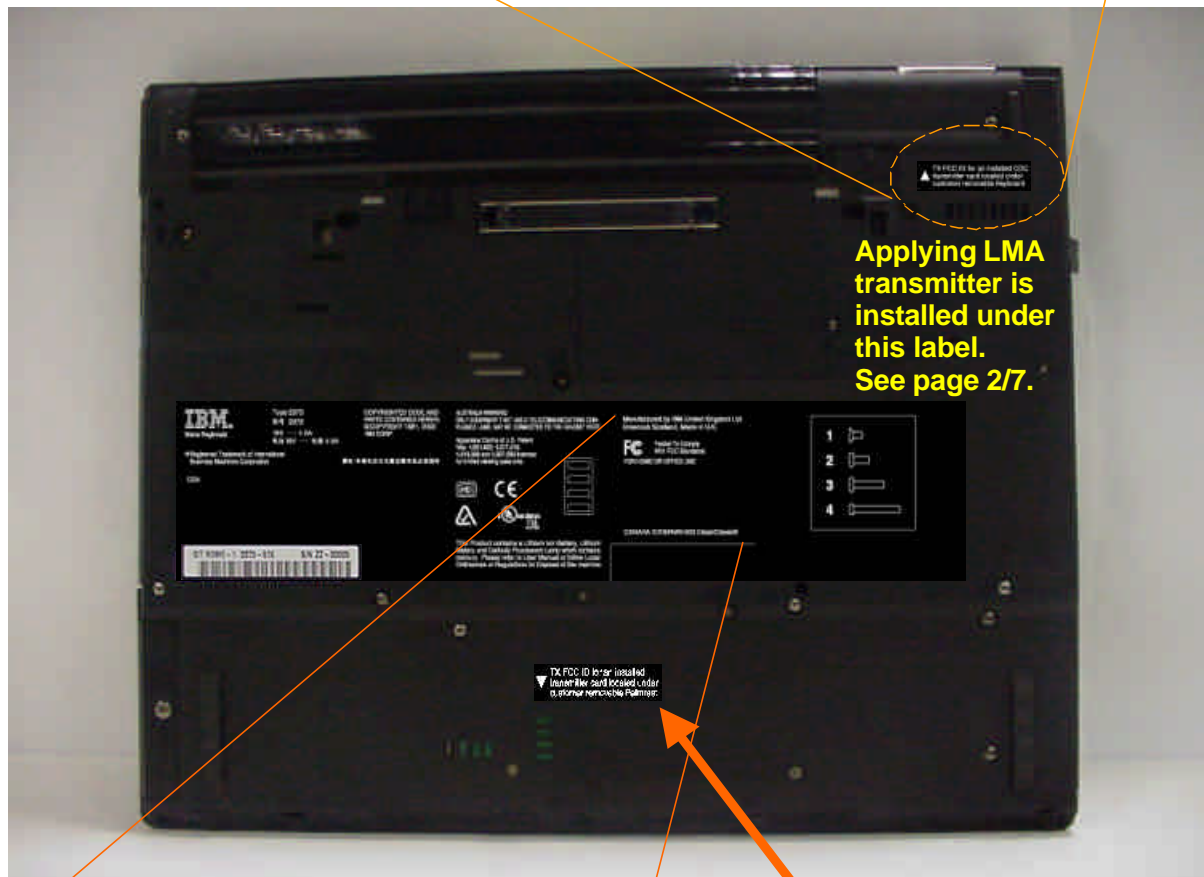
FCC ID of **built-in** type
collocated transmitter
to be certified simultaneously
with this application
(not user installable)

Label for a different model of the host PC (ThinkPad T40 Series)

The model (T40) supports the applying Bluetooth LMA module and one of the **user installable** WLANs (ANO20020201CLK or ANOU58H004) which are to be certified simultaneously with this application.



TX FCC ID for an installed CDC transmitter card located under customer removable Keyboard



**Applying LMA transmitter is installed under this label.
See page 2/7.**

TX FCC ID for an installed
transmitter card located under
customer removable Palmrest

Manufactured by IBM United Kingdom Ltd.
Greenock Scotland, Made in U.K.



Tested To Comply
With FCC Standards
FOR HOME OR OFFICE USE

CANADA ICES/NMB-003 Class/Classe B



TX FCC ID for an installed transmitter card located under customer removable Palmrest

The collocated user installable WLAN transmitter is installed under this label.

Antenna Information

1. Antenna Specification

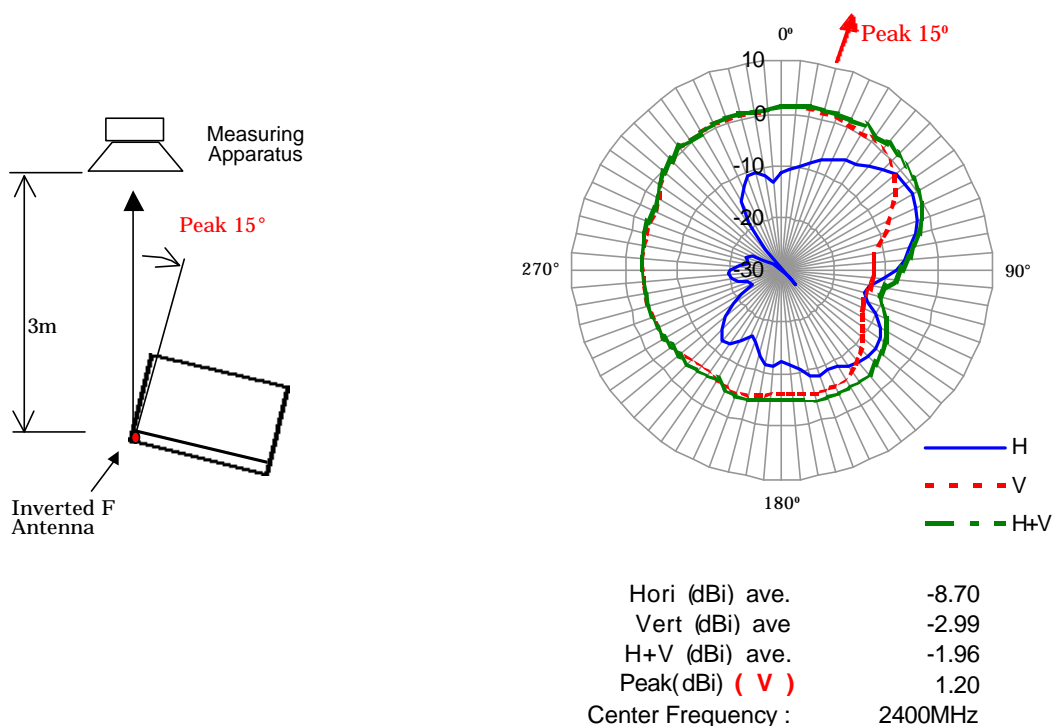
Transmission Antenna assembly overview

Designator (Parts Number)	Manufacture	Antenna type	Cable type and length	Gain (dBi) Note 1)
Bluetooth antenna 62P4256	Foxconn Electronics Inc. (R.O.C.)	Inverted F type Antenna	Coax 265 mm	1.20 dBi (peak)

Notes:

- 1a. Includes all cable losses.
- 1b. Antenna type should be Omni Directional and have gain of 2.0 dBi or less, regarding the IBM internal specification.

2. Radiation characteristic of antenna



Note1) The measurement was performed at 3 frequencies (2400, 2450, 2500MHz).

Note2) The maximum antenna gain was found around **15 degree** angle from measuring apparatus in **vertical** polarization at the low frequency (2400MHz).

3. Exterior Photos of Antennas

