

EXHIBIT 22 – PHOTOS – DUT INTERNAL

Figure E22.1 – Internal, Top Removed



Figure E22.2 – Internal, Bottom Removed

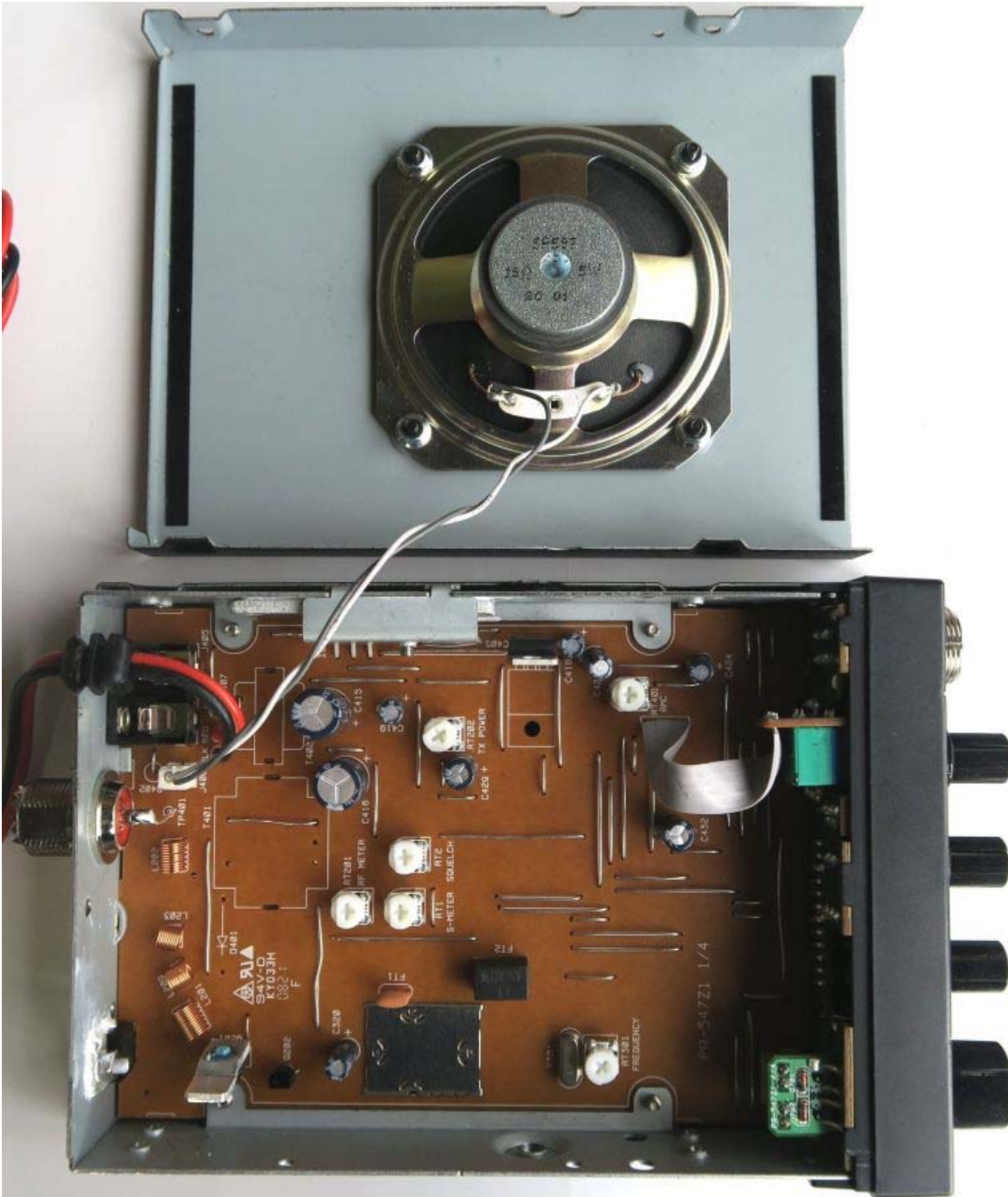


Figure E22.3 – Internal, Bottom Cover

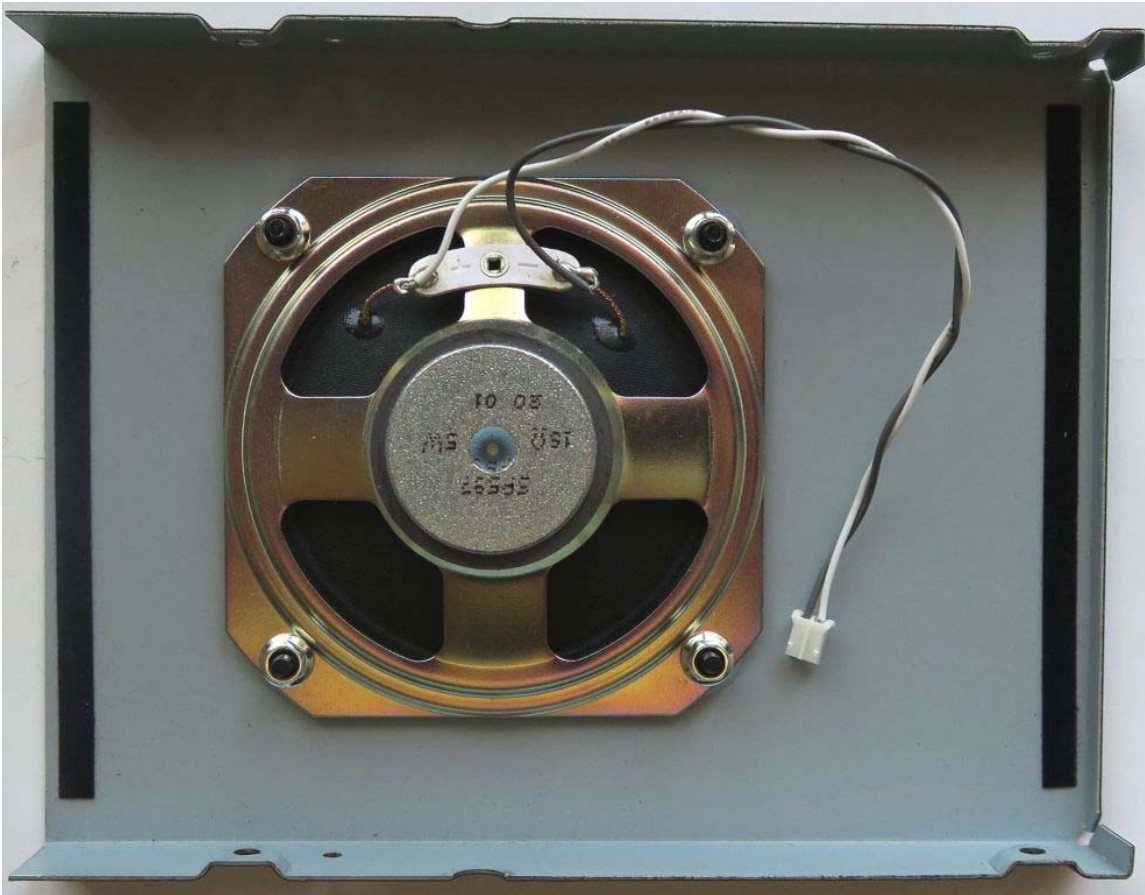
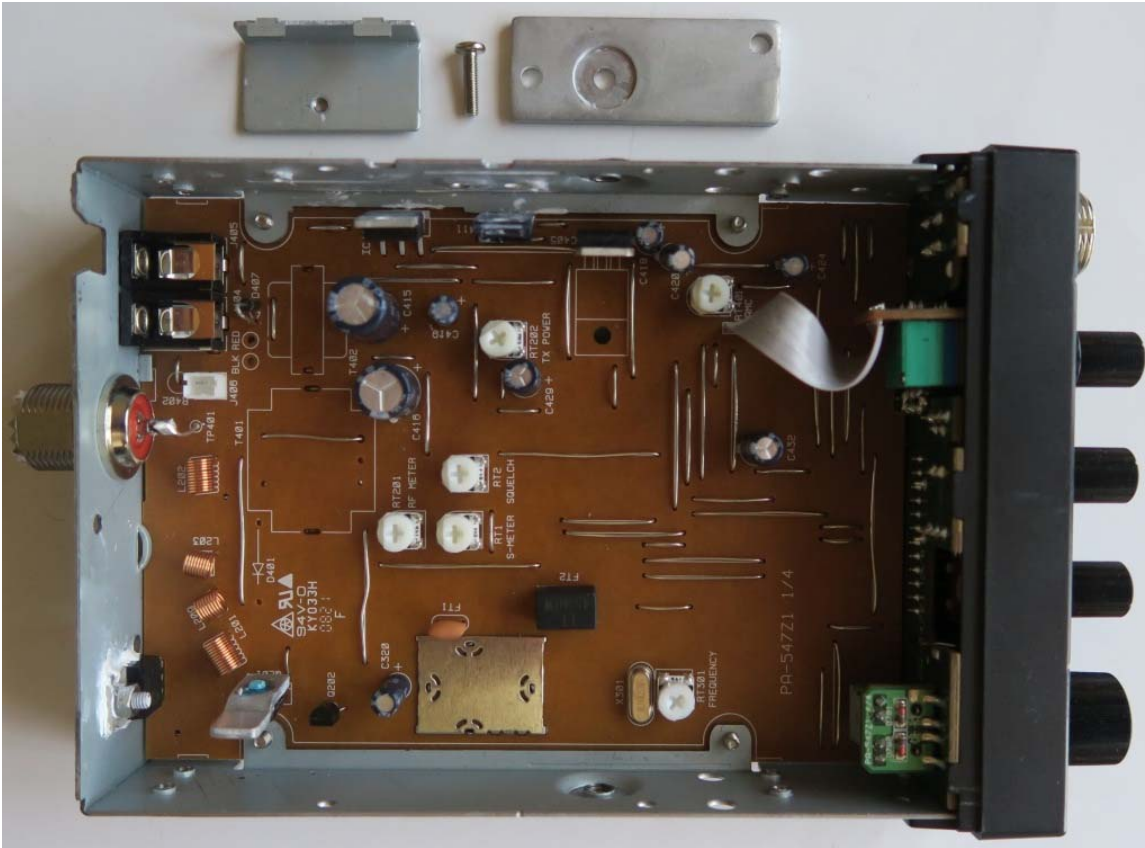


Figure E22.4 – Internal, Heat Sinks Removed



The image shows the reverse side of a green printed circuit board (PCB) for a Sony CCD camera. The board is densely populated with electronic components. Key components include:

- ICs:** Several integrated circuits are visible, including IC401, IC402, IC403, IC404, IC405, IC406, IC407, IC408, IC409, IC410, IC411, IC412, IC413, IC414, IC415, IC416, IC417, IC418, IC419, IC420, IC421, IC422, IC423, IC424, IC425, IC426, IC427, IC428, IC429, IC430, IC431, IC432, IC433, IC434, IC435, IC436, IC437, IC438, IC439, IC440, IC441, IC442, IC443, IC444, IC445, IC446, IC447, IC448, IC449, IC450, IC451, IC452, IC453, IC454, IC455, IC456, IC457, IC458, IC459, IC460, IC461, IC462, IC463, IC464, IC465, IC466, IC467, IC468, IC469, IC470, IC471, IC472, IC473, IC474, IC475, IC476, IC477, IC478, IC479, IC480, IC481, IC482, IC483, IC484, IC485, IC486, IC487, IC488, IC489, IC490, IC491, IC492, IC493, IC494, IC495, IC496, IC497, IC498, IC499, IC500, IC501, IC502, IC503, IC504, IC505, IC506, IC507, IC508, IC509, IC510, IC511, IC512, IC513, IC514, IC515, IC516, IC517, IC518, IC519, IC520, IC521, IC522, IC523, IC524, IC525, IC526, IC527, IC528, IC529, IC530, IC531, IC532, IC533, IC534, IC535, IC536, IC537, IC538, IC539, IC540, IC541, IC542, IC543, IC544, IC545, IC546, IC547, IC548, IC549, IC550, IC551, IC552, IC553, IC554, IC555, IC556, IC557, IC558, IC559, IC560, IC561, IC562, IC563, IC564, IC565, IC566, IC567, IC568, IC569, IC570, IC571, IC572, IC573, IC574, IC575, IC576, IC577, IC578, IC579, IC580, IC581, IC582, IC583, IC584, IC585, IC586, IC587, IC588, IC589, IC590, IC591, IC592, IC593, IC594, IC595, IC596, IC597, IC598, IC599, IC600, IC601, IC602, IC603, IC604, IC605, IC606, IC607, IC608, IC609, IC610, IC611, IC612, IC613, IC614, IC615, IC616, IC617, IC618, IC619, IC620, IC621, IC622, IC623, IC624, IC625, IC626, IC627, IC628, IC629, IC630, IC631, IC632, IC633, IC634, IC635, IC636, IC637, IC638, IC639, IC640, IC641, IC642, IC643, IC644, IC645, IC646, IC647, IC648, IC649, IC650, IC651, IC652, IC653, IC654, IC655, IC656, IC657, IC658, IC659, IC660, IC661, IC662, IC663, IC664, IC665, IC666, IC667, IC668, IC669, IC670, IC671, IC672, IC673, IC674, IC675, IC676, IC677, IC678, IC679, IC680, IC681, IC682, IC683, IC684, IC685, IC686, IC687, IC688, IC689, IC690, IC691, IC692, IC693, IC694, IC695, IC696, IC697, IC698, IC699, IC700, IC701, IC702, IC703, IC704, IC705, IC706, IC707, IC708, IC709, IC710, IC711, IC712, IC713, IC714, IC715, IC716, IC717, IC718, IC719, IC720, IC721, IC722, IC723, IC724, IC725, IC726, IC727, IC728, IC729, IC730, IC731, IC732, IC733, IC734, IC735, IC736, IC737, IC738, IC739, IC740, IC741, IC742, IC743, IC744, IC745, IC746, IC747, IC748, IC749, IC750, IC751, IC752, IC753, IC754, IC755, IC756, IC757, IC758, IC759, IC760, IC761, IC762, IC763, IC764, IC765, IC766, IC767, IC768, IC769, IC770, IC771, IC772, IC773, IC774, IC775, IC776, IC777, IC778, IC779, IC780, IC781, IC782, IC783, IC784, IC785, IC786, IC787, IC788, IC789, IC790, IC791, IC792, IC793, IC794, IC795, IC796, IC797, IC798, IC799, IC800, IC801, IC802, IC803, IC804, IC805, IC806, IC807, IC808, IC809, IC810, IC811, IC812, IC813, IC814, IC815, IC816, IC817, IC818, IC819, IC820, IC821, IC822, IC823, IC824, IC825, IC826, IC827, IC828, IC829, IC830, IC831, IC832, IC833, IC834, IC835, IC836, IC837, IC838, IC839, IC840, IC841, IC842, IC843, IC844, IC845, IC846, IC847, IC848, IC849, IC850, IC851, IC852, IC853, IC854, IC855, IC856, IC857, IC858, IC859, IC860, IC861, IC862, IC863, IC864, IC865, IC866, IC867, IC868, IC869, IC870, IC871, IC872, IC873, IC874, IC875, IC876, IC877, IC878, IC879, IC880, IC881, IC882, IC883, IC884, IC885, IC886, IC887, IC888, IC889, IC890, IC891, IC892, IC893, IC894, IC895, IC896, IC897, IC898, IC899, IC900, IC901, IC902, IC903, IC904, IC905, IC906, IC907, IC908, IC909, IC910, IC911, IC912, IC913, IC914, IC915, IC916, IC917, IC918, IC919, IC920, IC921, IC922, IC923, IC924, IC925, IC926, IC927, IC928, IC929, IC930, IC931, IC932, IC933, IC934, IC935, IC936, IC937, IC938, IC939, IC940, IC941, IC942, IC943, IC944, IC945, IC946, IC947, IC948, IC949, IC950, IC951, IC952, IC953, IC954, IC955, IC956, IC957, IC958, IC959, IC960, IC961, IC962, IC963, IC964, IC965, IC966, IC967, IC968, IC969, IC970, IC971, IC972, IC973, IC974, IC975, IC976, IC977, IC978, IC979, IC980, IC981, IC982, IC983, IC984, IC985, IC986, IC987, IC988, IC989, IC990, IC991, IC992, IC993, IC994, IC995, IC996, IC997, IC998, IC999, IC1000, IC1001, IC1002, IC1003, IC1004, IC1005, IC1006, IC1007, IC1008, IC1009, IC1010, IC1011, IC1012, IC1013, IC1014, IC1015, IC1016, IC1017, IC1018, IC1019, IC1020, IC1021, IC1022, IC1023, IC1024, IC1025, IC1026, IC1027, IC1028, IC1029, IC1030, IC1031, IC1032, IC1033, IC1034, IC1035, IC1036, IC1037, IC1038, IC1039, IC1040, IC1041, IC1042, IC1043, IC1044, IC1045, IC1046, IC1047, IC1048, IC1049, IC1050, IC1051, IC1052, IC1053, IC1054, IC1055, IC1056, IC1057, IC1058, IC1059, IC1060, IC1061, IC1062, IC1063, IC1064, IC1065, IC1066, IC1067, IC1068, IC1069, IC1070, IC1071, IC1072, IC1073, IC1074, IC1075, IC1076, IC1077, IC1078, IC1079, IC1080, IC1081, IC1082, IC1083, IC1084, IC1085, IC1086, IC1087, IC1088, IC1089, IC1090, IC1091, IC1092, IC1093, IC1094, IC1095, IC1096, IC1097, IC1098, IC1099, IC1100, IC1101, IC1102, IC1103, IC1104, IC1105, IC1106, IC1107, IC1108, IC1109, IC1110, IC1111, IC1112, IC1113, IC1114, IC1115, IC1116, IC1117, IC1118, IC1119, IC1120, IC1121, IC1122, IC1123, IC1124, IC1125, IC1126, IC1127, IC1128, IC1129, IC1130, IC1131, IC1132, IC1133, IC1134, IC1135, IC1136, IC1137, IC1138, IC1139, IC1140, IC1141, IC1142, IC1143, IC1144, IC1145, IC1146, IC1147, IC1148, IC1149, IC1150, IC1151, IC1152, IC1153, IC1154, IC1155, IC1156, IC1157, IC1158, IC1159, IC11

Figure E22.6 – Internal, PCB Bottom, Shields Removed

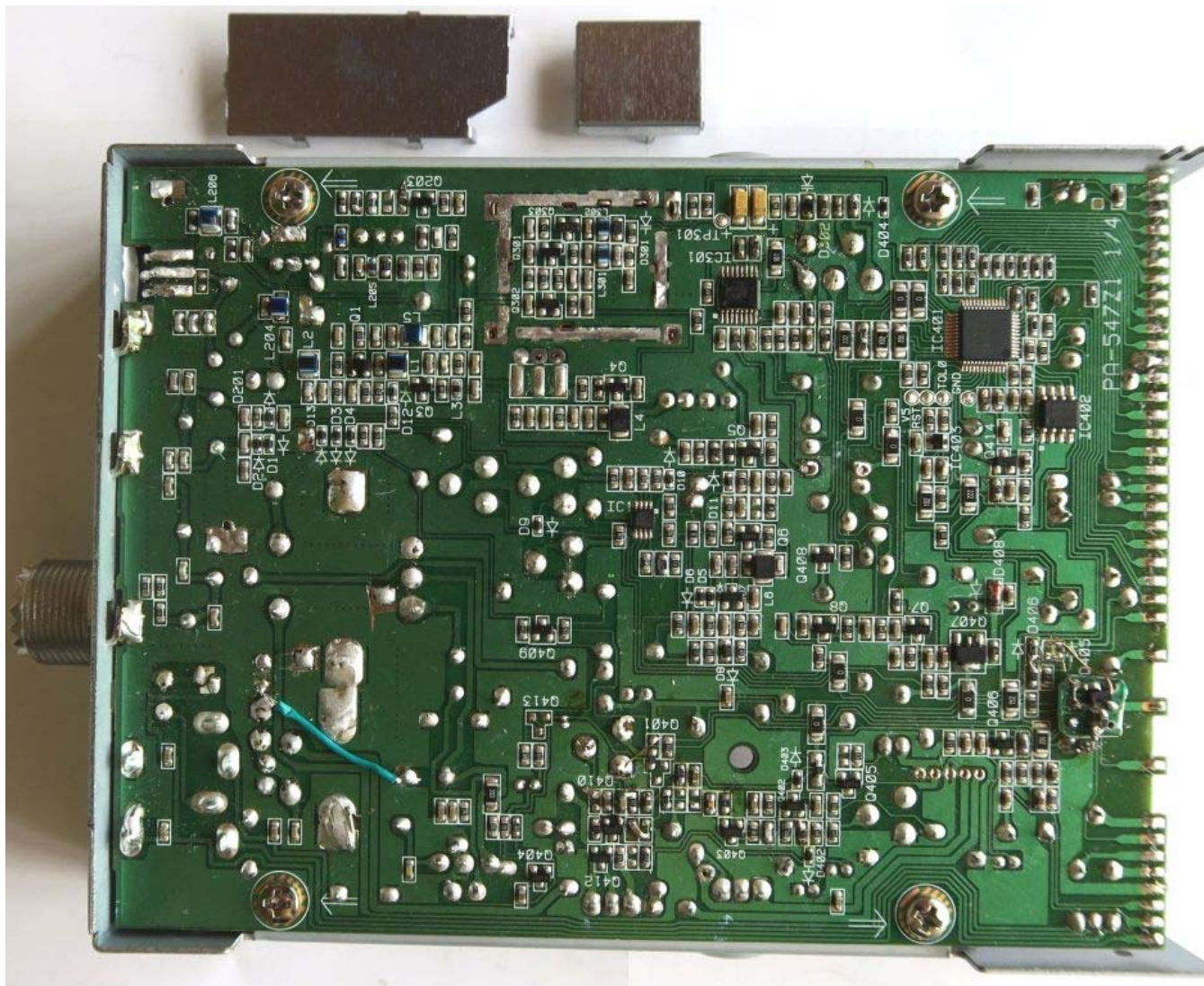


Figure E22.7 – Internal, Front Interface

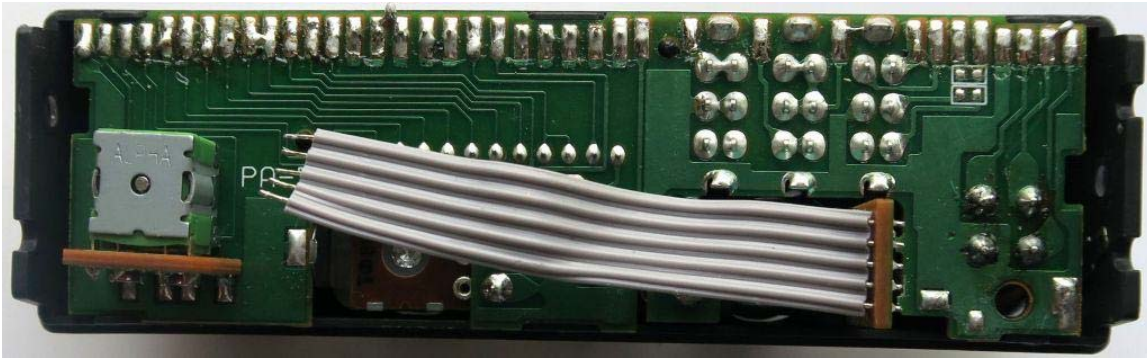


Figure E22.8 – Internal, Front Interface Disassembled

