


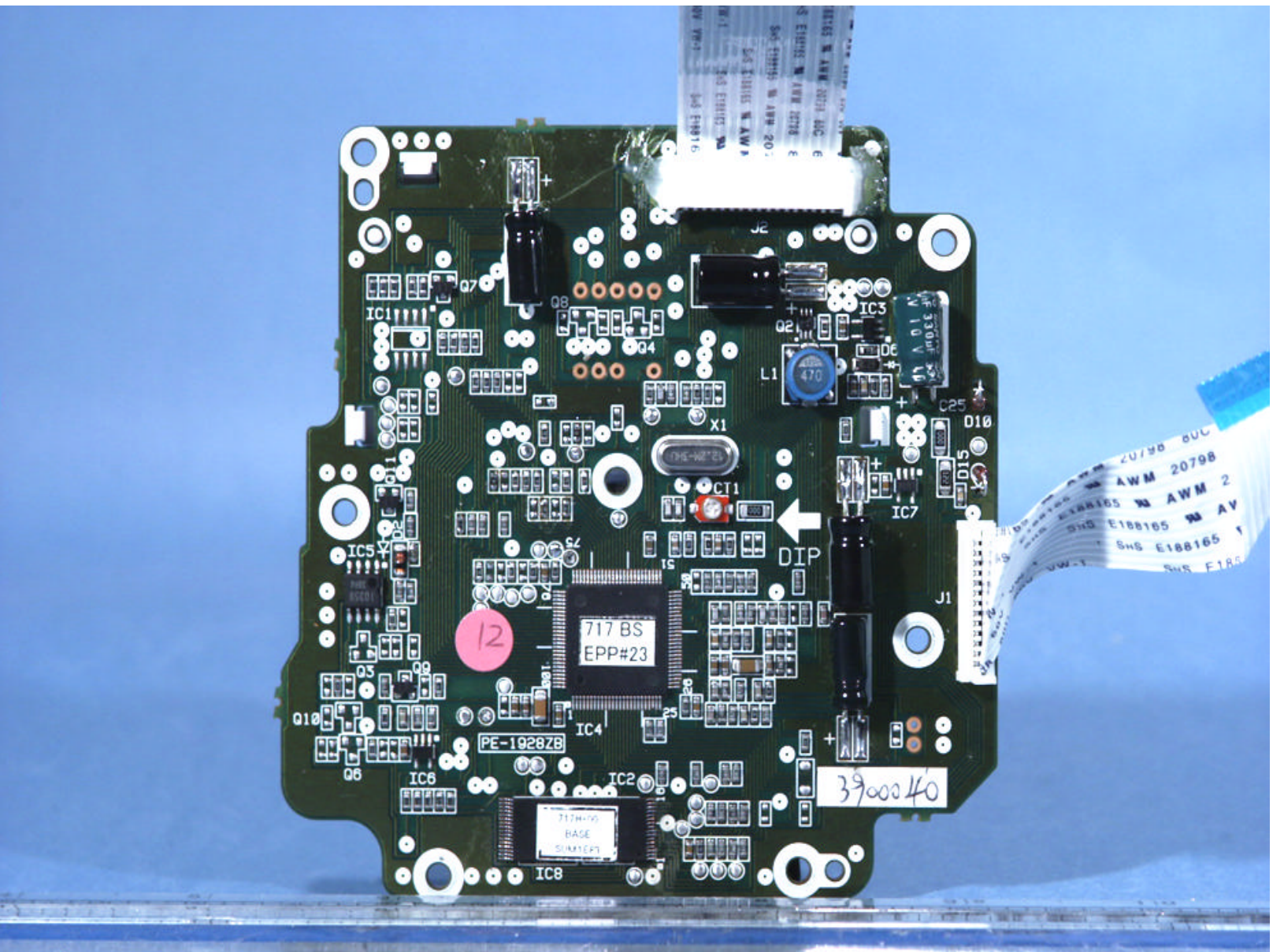


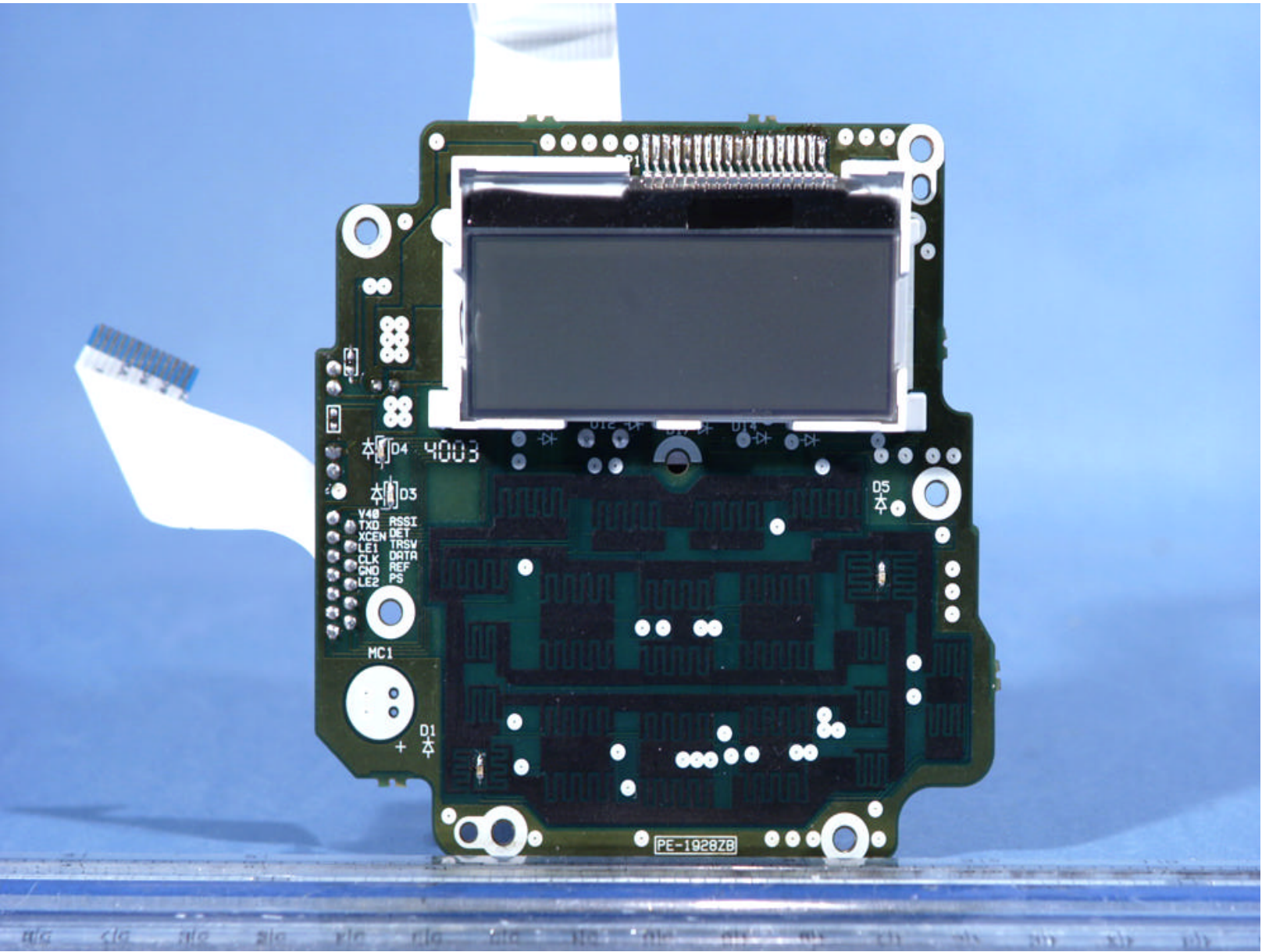
MODEL BT-446  
NICKEL METAL HYDRIDE  
RECHARGEABLE BATTERY  
DC 3.6V 800mAh  
MUST BE DISPOSED OF  
PROPERLY.  
BATTERY MANUFACTURED BY GPI  
MADE IN CHINA

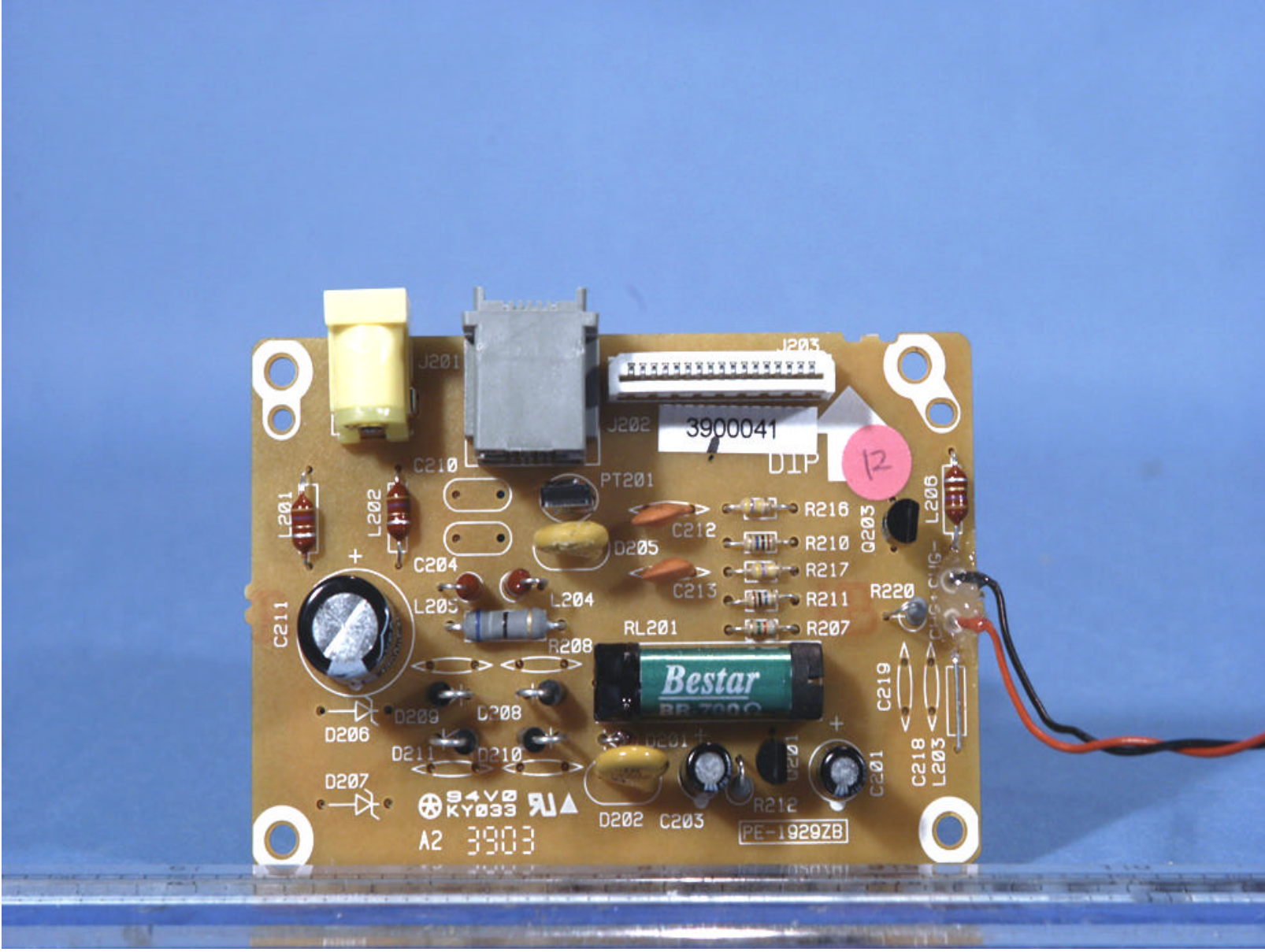



Ni-MH  
2003 I

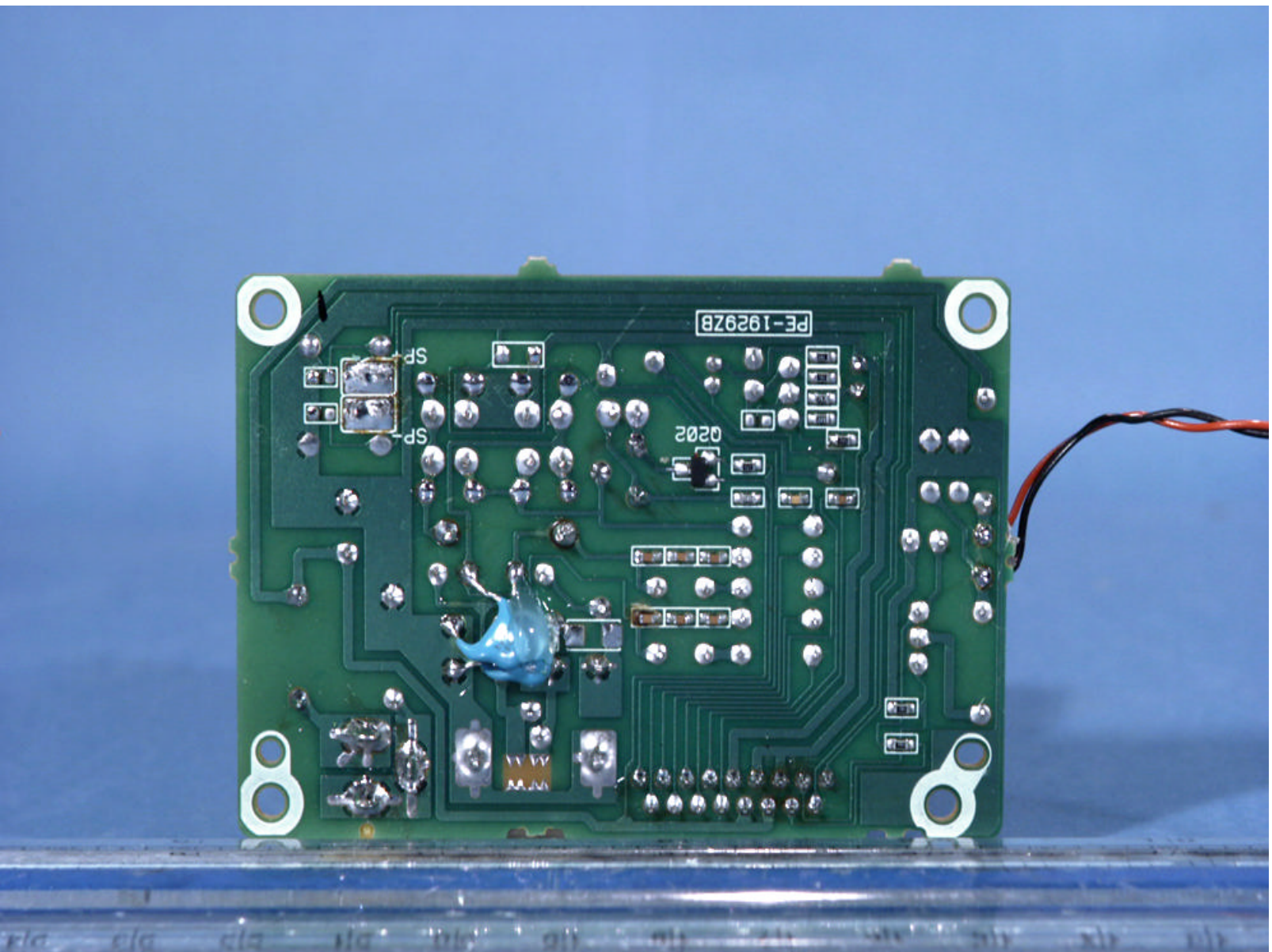
 PCTEST Professional Calibration, Test, and Repair Lab	UNIDEN FCC ID: AMWWUP737 5.8GHz Cordless Phone	EUT Photographs Model: TRU8885
© 2004 PCTEST Lab.		



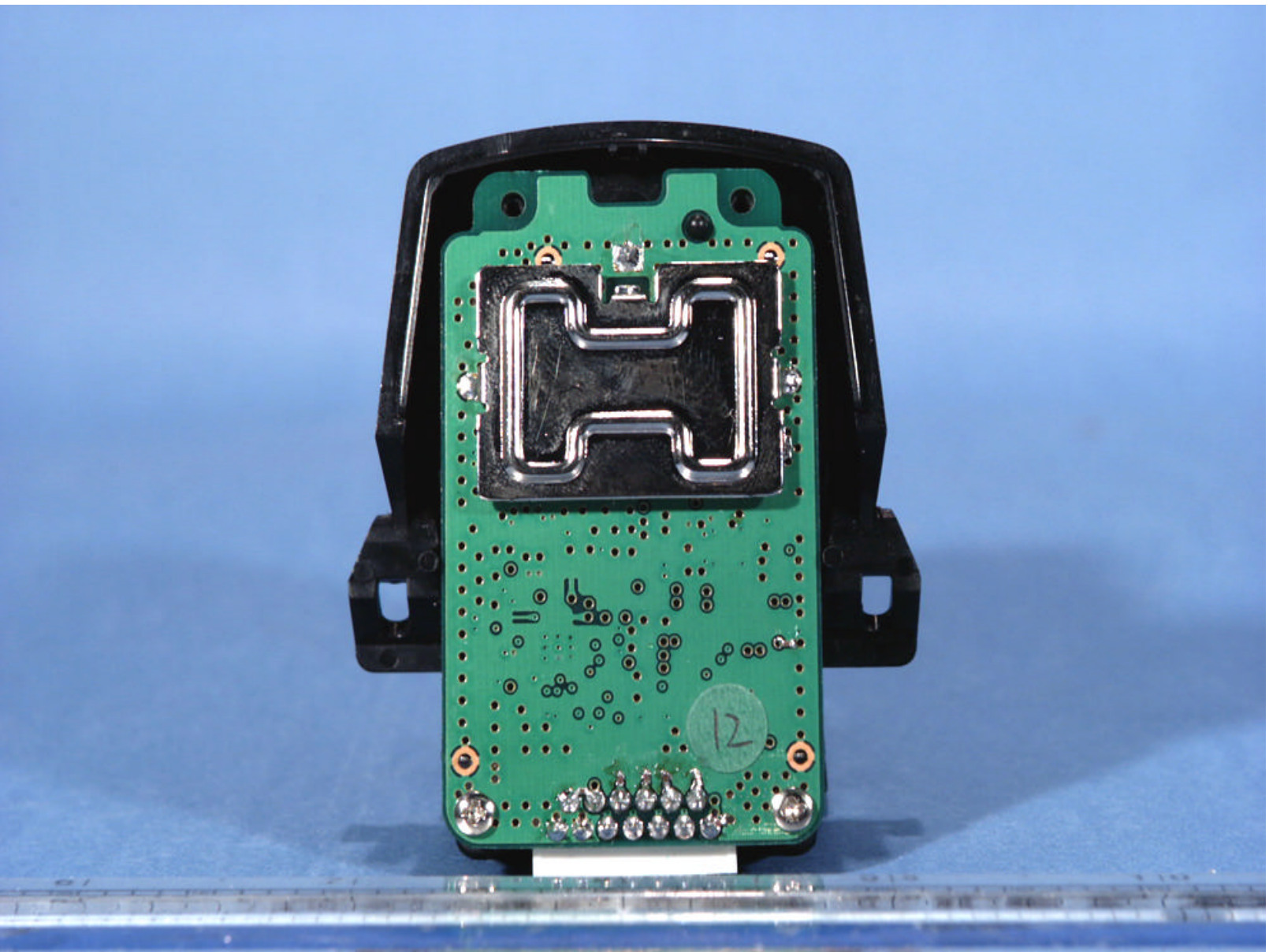


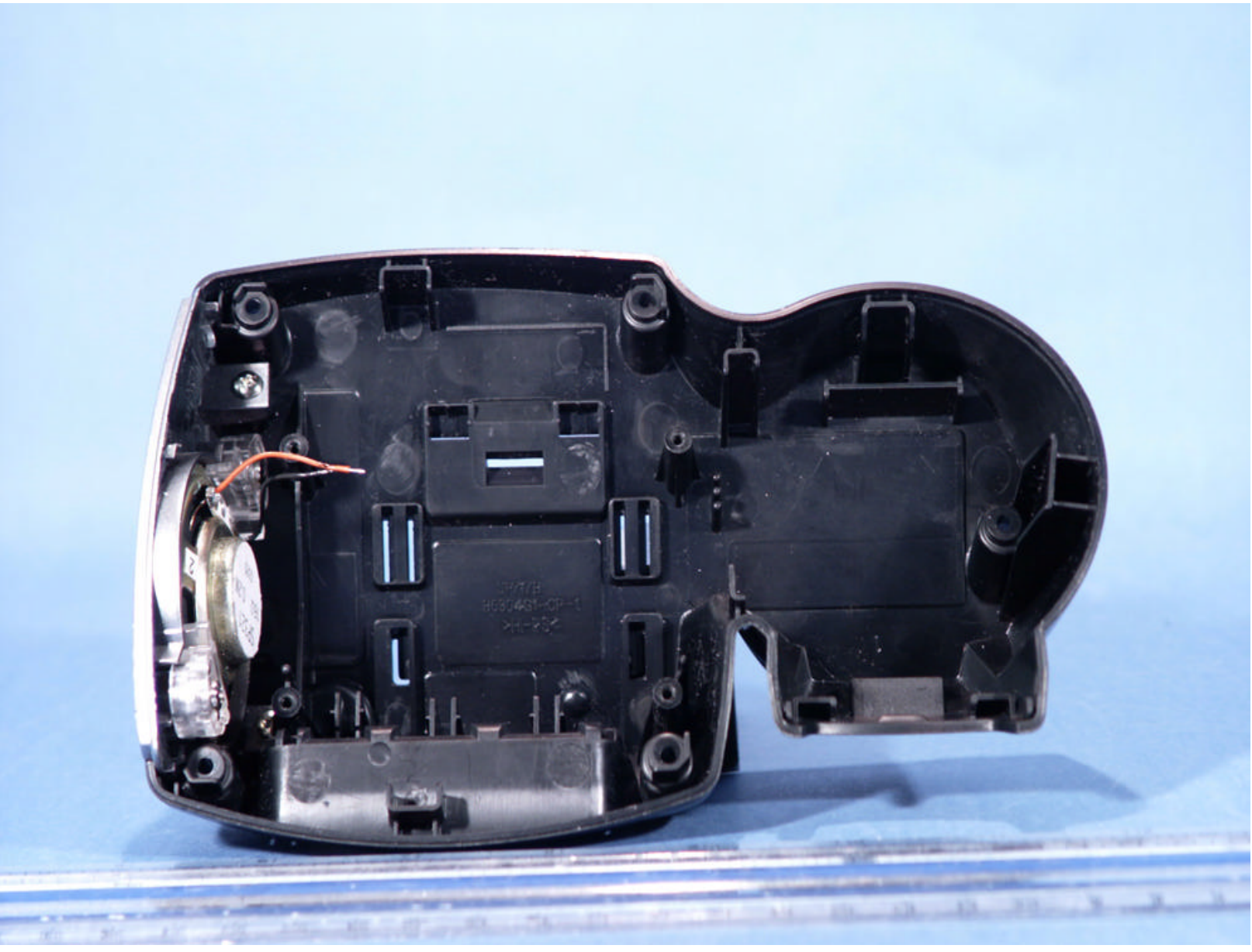


 PCTEST Precision Test Equipment Lab.	UNIDEN FCC ID: AMWUP737 5.8GHz Cordless Phone	EUT Photographs Model: TRU8885
© 2004 PCTEST Lab.		

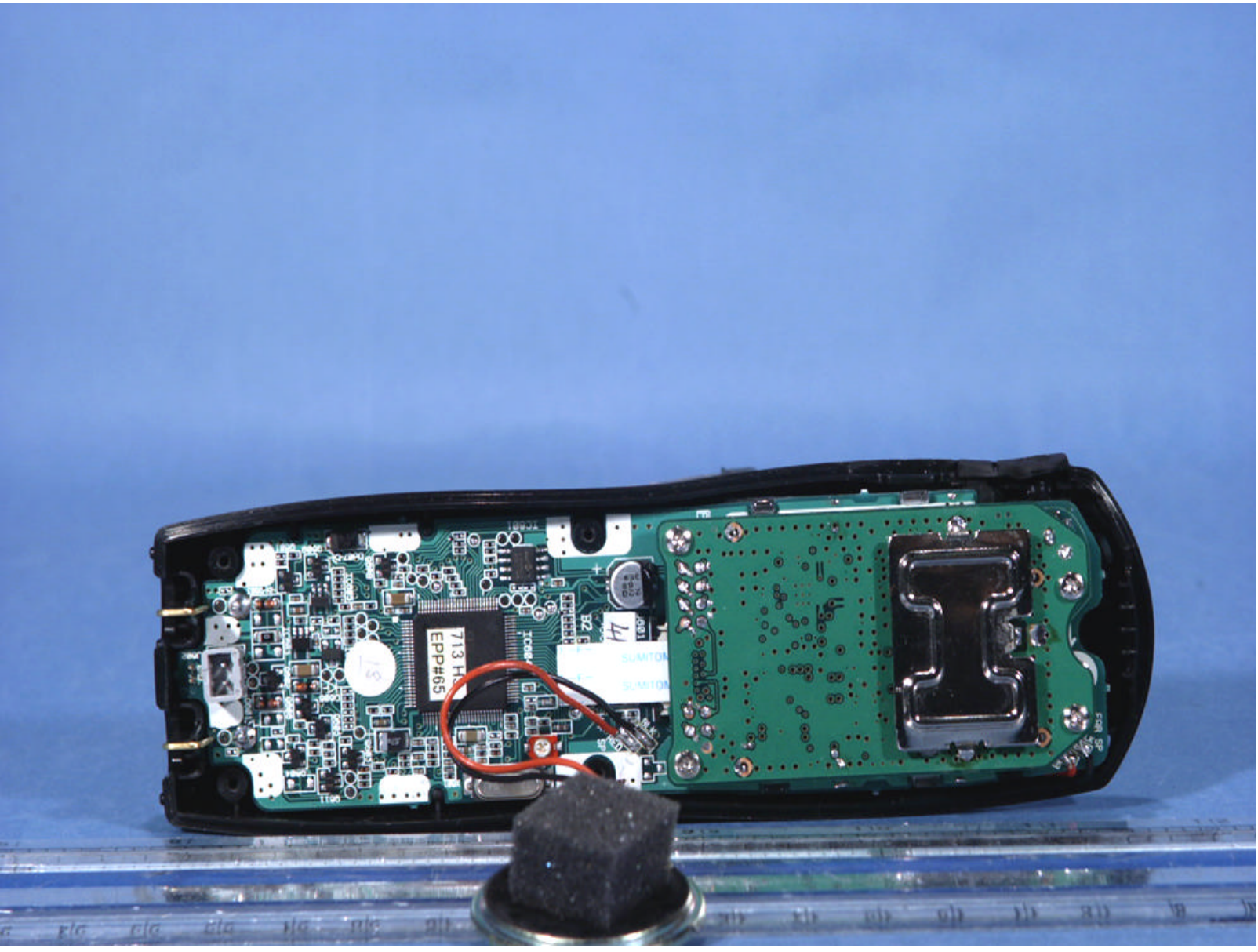


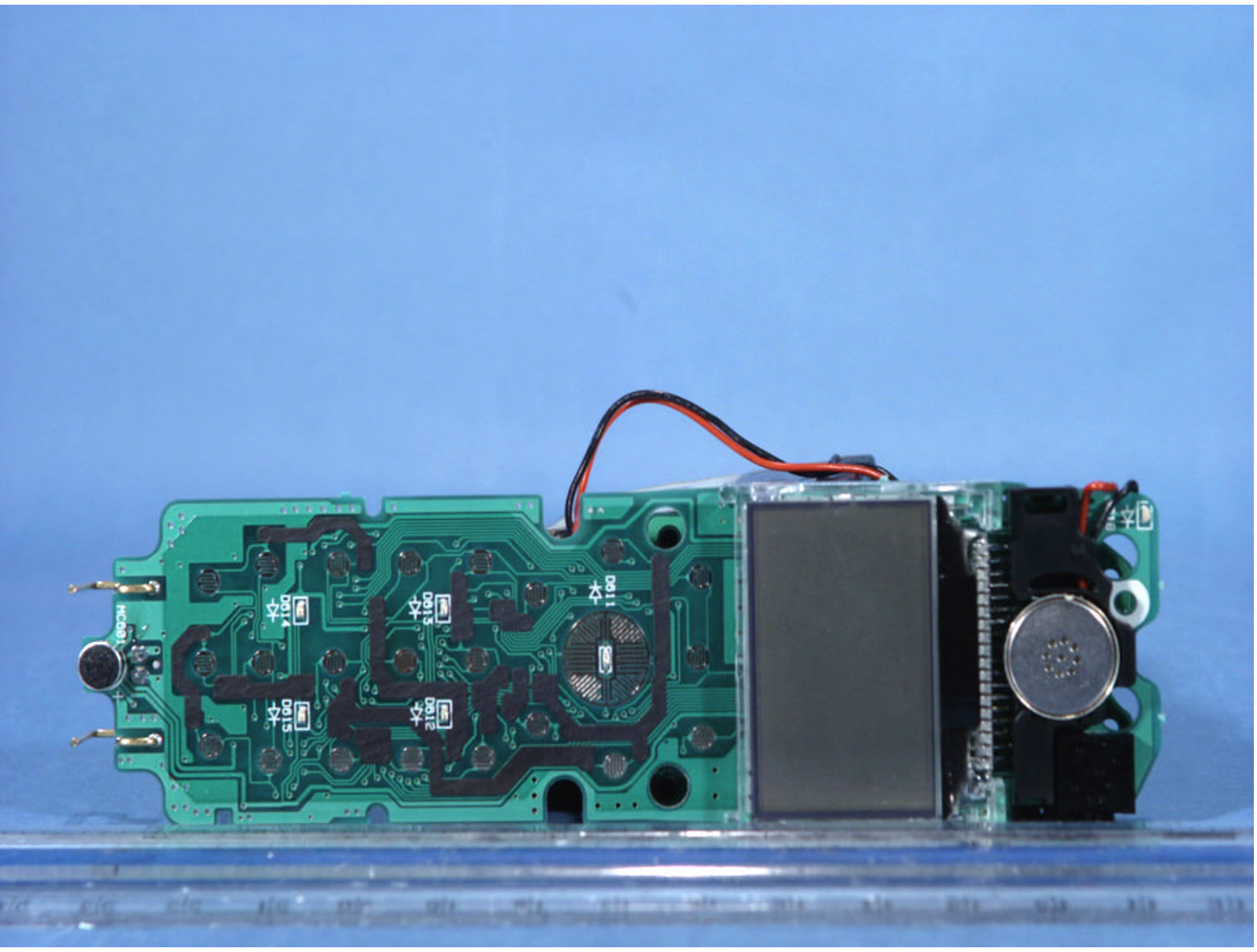


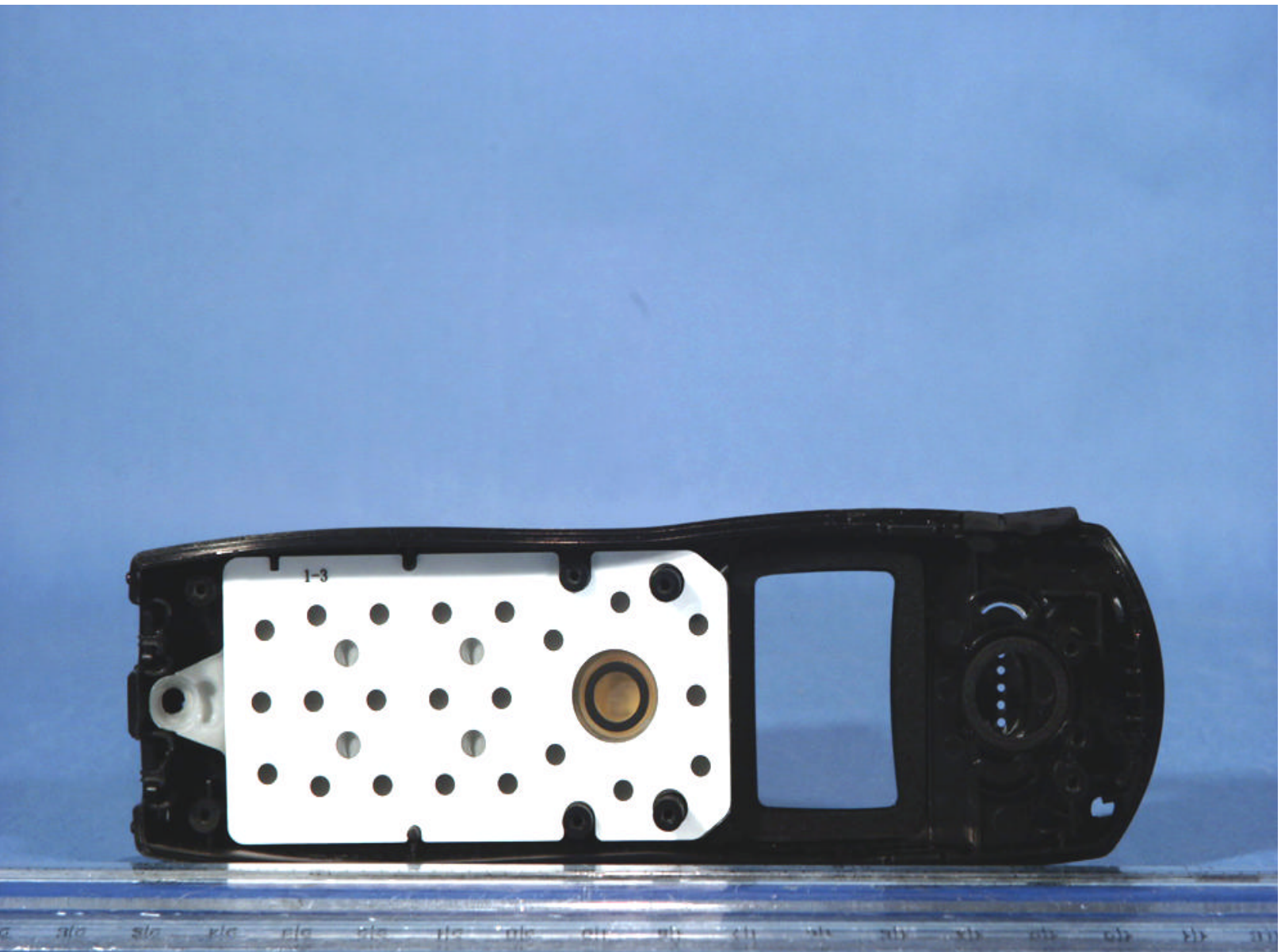












**PCTEST**  
Professional Cellular Testing & Lab

© 2004 PCTEST Lab.

UNIDEN FCC ID: AMWUP737  
5.8GHz Cordless Phone

EUT Photographs  
Model: TRU8885