

UNIDEN FCC ID:AMWUH052A -- FM Head SAR

Generic Twin Phantom; Right Hand Section; Probe: ET3DV5 - SN1370 -- Probe Cal Date 02/00

Med. Parameters 835 MHz Brain: $\sigma = 0.90$ mho/m $\epsilon_r = 41.5$ $\rho = 1.00$ g/cm³; Antenna Position -- Out; Crest Factor 1.0

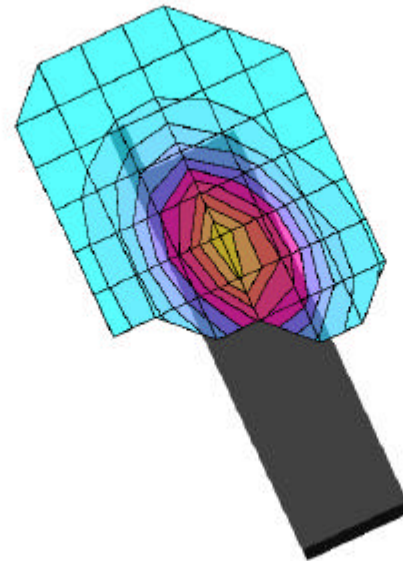
SAR (1g): 1.42 mW/g, SAR (10g): 0.991 mW/g

UNIDEN FCC ID: AMWUH052A Single-Mode Phone Model: ASC911A

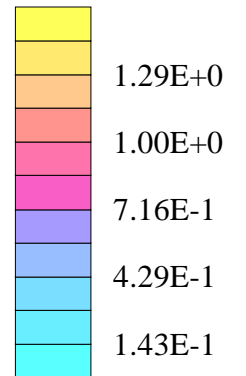
FM Mode, Ch.0993 [824.100MHz]; Flip = open

Conducted Power = 25.6dBm

Test Date -- 02-01-2001



SAR_{Tot} [mW/g]



UNIDEN FCC ID:AMWUH052A -- FM Head SAR

Generic Twin Phantom; Right Hand Section; Probe: ET3DV5 - SN1370 -- Probe Cal Date 02/00

Med. Parameters 835 MHz Brain: $\sigma = 0.90$ mho/m $\epsilon_r = 41.5$ $\rho = 1.00$ g/cm³; Antenna Position -- Out; Crest Factor 1.0

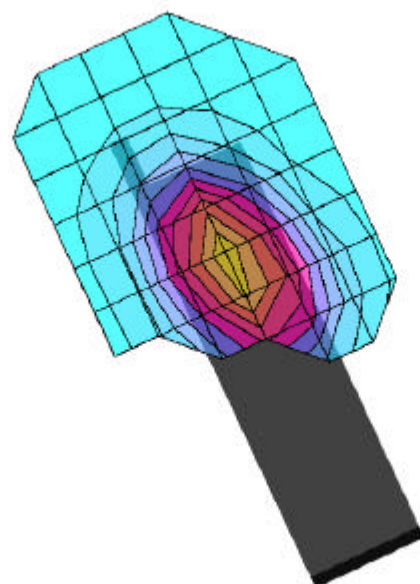
SAR (1g): 1.34 mW/g, SAR (10g): 0.941 mW/g

UNIDEN FCC ID: AMWUH052A Single-Mode Phone Model: ASC911A

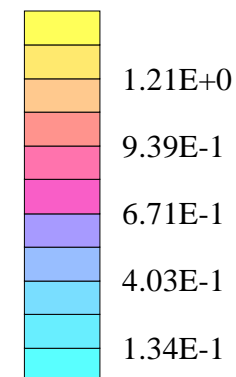
FM Mode, Ch.0384 [836.520MHz]; Flip = open

Conducted Power = 25.6dBm

Test Date -- 02-01-2001



SAR_{Tot} [mW/g]



UNIDEN FCC ID:AMWUH052A -- FM Head SAR

Generic Twin Phantom; Right Hand Section; Probe: ET3DV5 - SN1370 -- Probe Cal Date 02/00

Med. Parameters 835 MHz Brain: $\sigma = 0.90$ mho/m $\epsilon_r = 41.5$ $\rho = 1.00$ g/cm³; Antenna Position -- Out; Crest Factor 1.0

SAR (1g): 1.30 mW/g, SAR (10g): 0.918 mW/g

UNIDEN FCC ID: AMWUH052A Single-Mode Phone Model: ASC911A

FM Mode, Ch.0797 [848.910MHz]; Flip = open

Conducted Power = 25.6dBm

Test Date -- 02-01-2001

