

# UNIDEN FCC ID:AMWUH052A -- FM Body SAR

Generic Twin Phantom; Flat Section; Probe: ET3DV5 - SN1370 -- Probe Cal Date 02/00

Med. Parameters 835 MHz Muscle:  $\sigma = 0.95$  mho/m  $\epsilon_r = 56.2$   $\rho = 1.00$  g/cm<sup>3</sup>; Antenna Position -- Out; Crest Factor 1.0

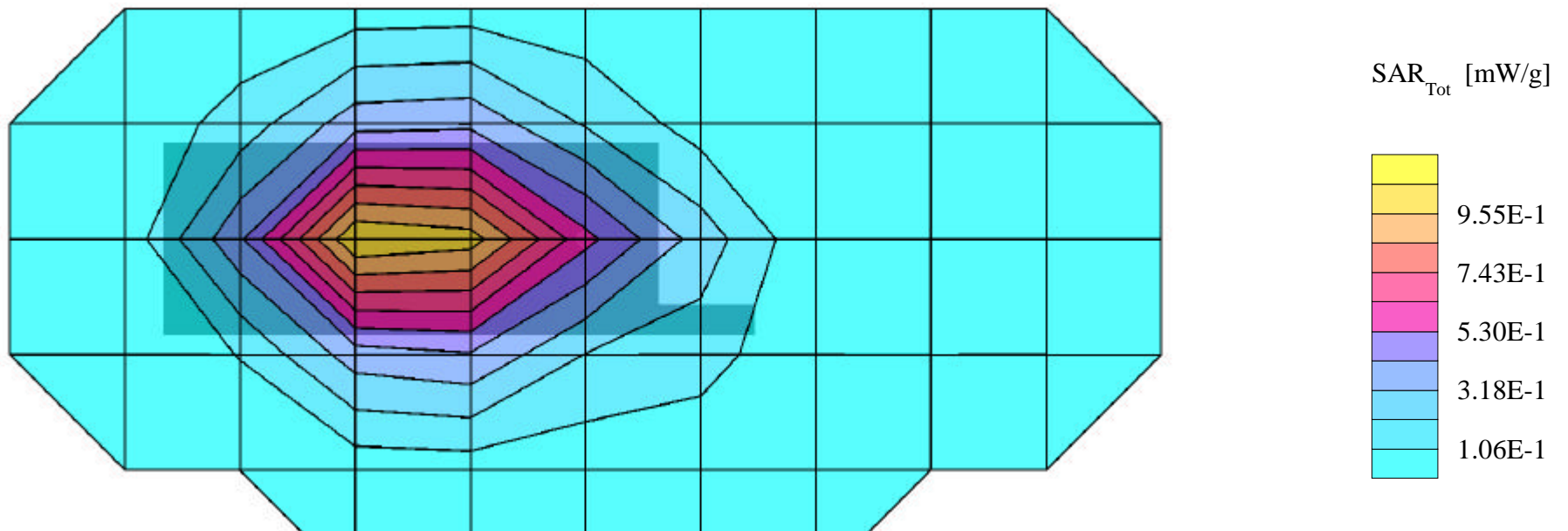
**SAR (1g): 1.10 mW/g, SAR (10g): 0.795 mW/g**

UNIDEN FCC ID: AMWUH052A Single-Mode Phone Model: ASC911A

FM Mode, Ch.0993 [824.100MHz]; Flip = closed

Conducted Power = 25.6dBm; Spacing = 0.6cm from flat phantom to phone, w/beltclip

Test Date -- 02-02-2001



# UNIDEN FCC ID:AMWUH052A -- FM Body SAR

Generic Twin Phantom; Flat Section; Probe: ET3DV5 - SN1370 -- Probe Cal Date 02/00

Med. Parameters 835 MHz Muscle:  $\sigma = 0.95$  mho/m  $\epsilon_r = 56.2$   $\rho = 1.00$  g/cm<sup>3</sup>; Antenna Position -- Out; Crest Factor 1.0

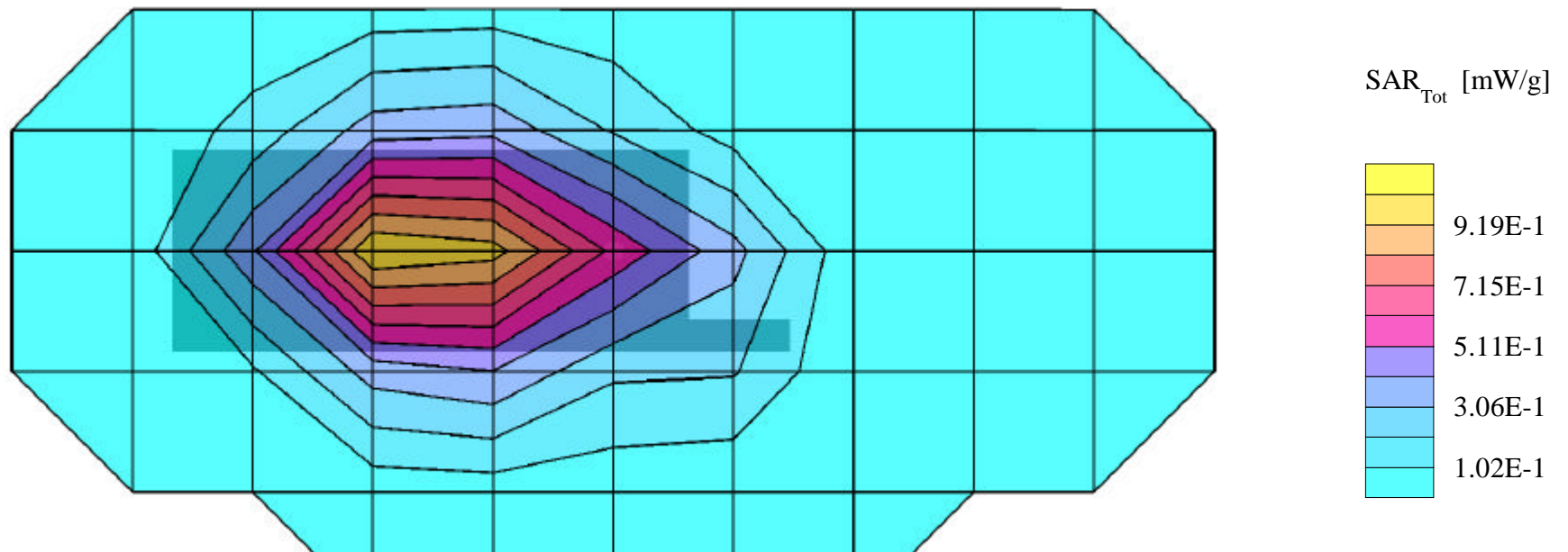
**SAR (1g): 1.09 mW/g, SAR (10g): 0.788 mW/g**

UNIDEN FCC ID: AMWUH052A Single-Mode Phone Model: ASC911A

FM Mode, Ch.0384 [836.520MHz]; Flip = closed

Conducted Power = 25.6dBm; Spacing = 0.6cm from flat phantom to phone, w/beltclip

Test Date -- 02-02-2001



# UNIDEN FCC ID:AMWUH052A -- FM Body SAR

Generic Twin Phantom; Flat Section; Probe: ET3DV5 - SN1370 -- Probe Cal Date 02/00

Med. Parameters 835 MHz Muscle:  $\sigma = 0.95$  mho/m  $\epsilon_r = 56.2$   $\rho = 1.00$  g/cm<sup>3</sup>; Antenna Position -- Out; Crest Factor 1.0

**SAR (1g): 0.991 mW/g, SAR (10g): 0.715 mW/g**

UNIDEN FCC ID: AMWUH052A Single-Mode Phone Model: ASC911A

FM Mode, Ch.0797 [848.910MHz]; Flip = closed

Conducted Power = 25.6dBm; Spacing = 0.6cm from flat phantom to phone, w/beltclip

Test Date -- 02-02-2001

