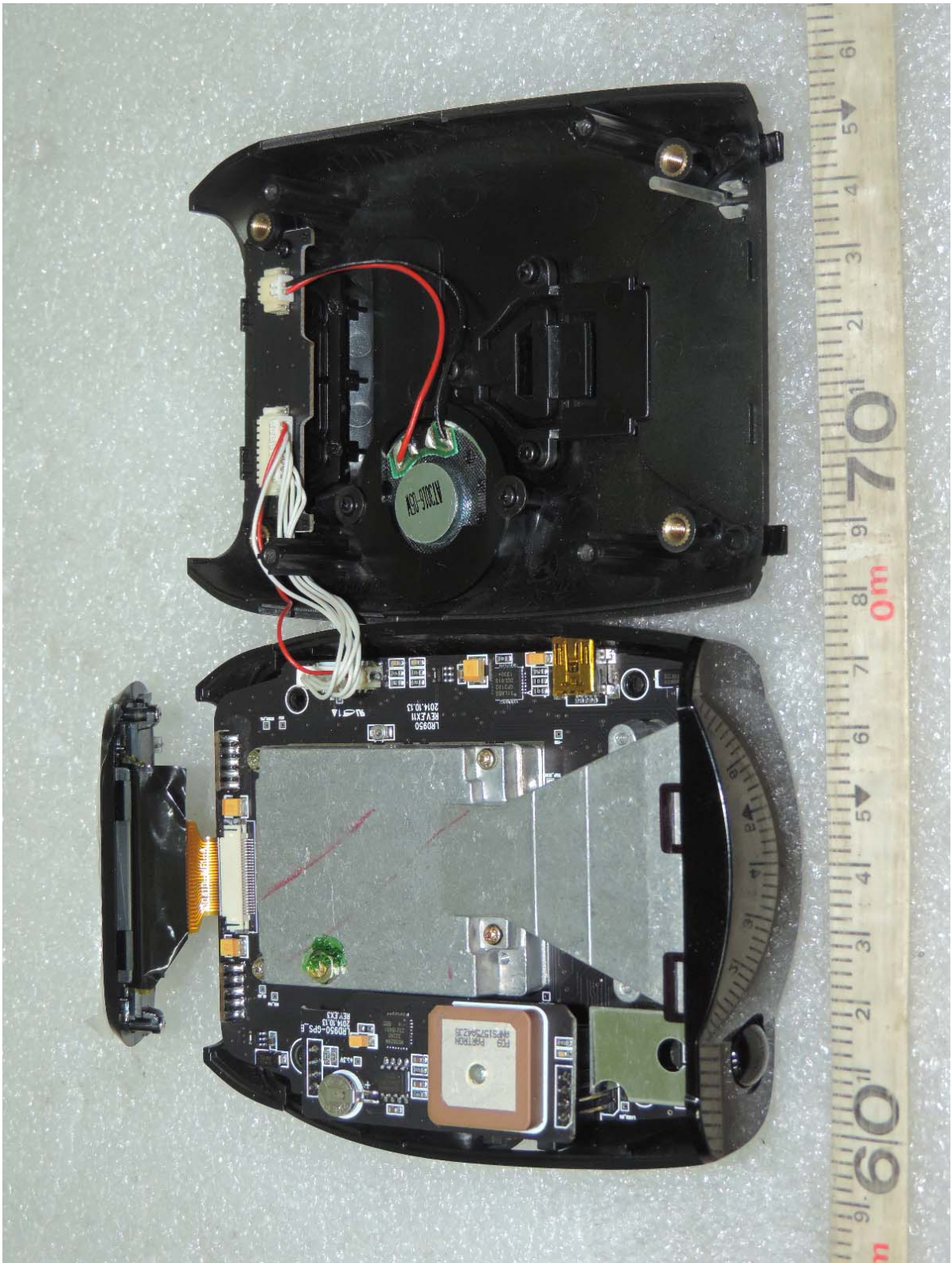
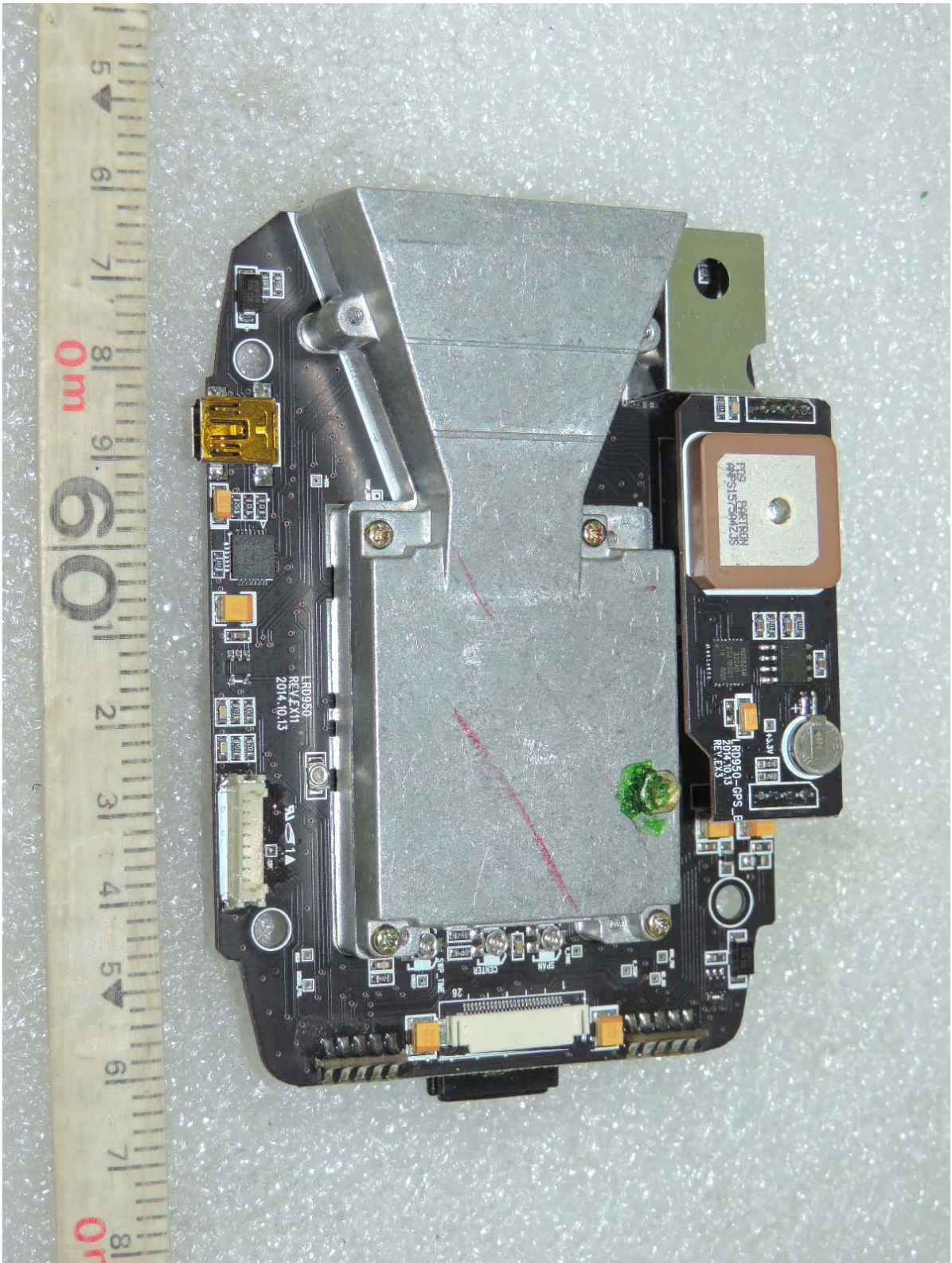


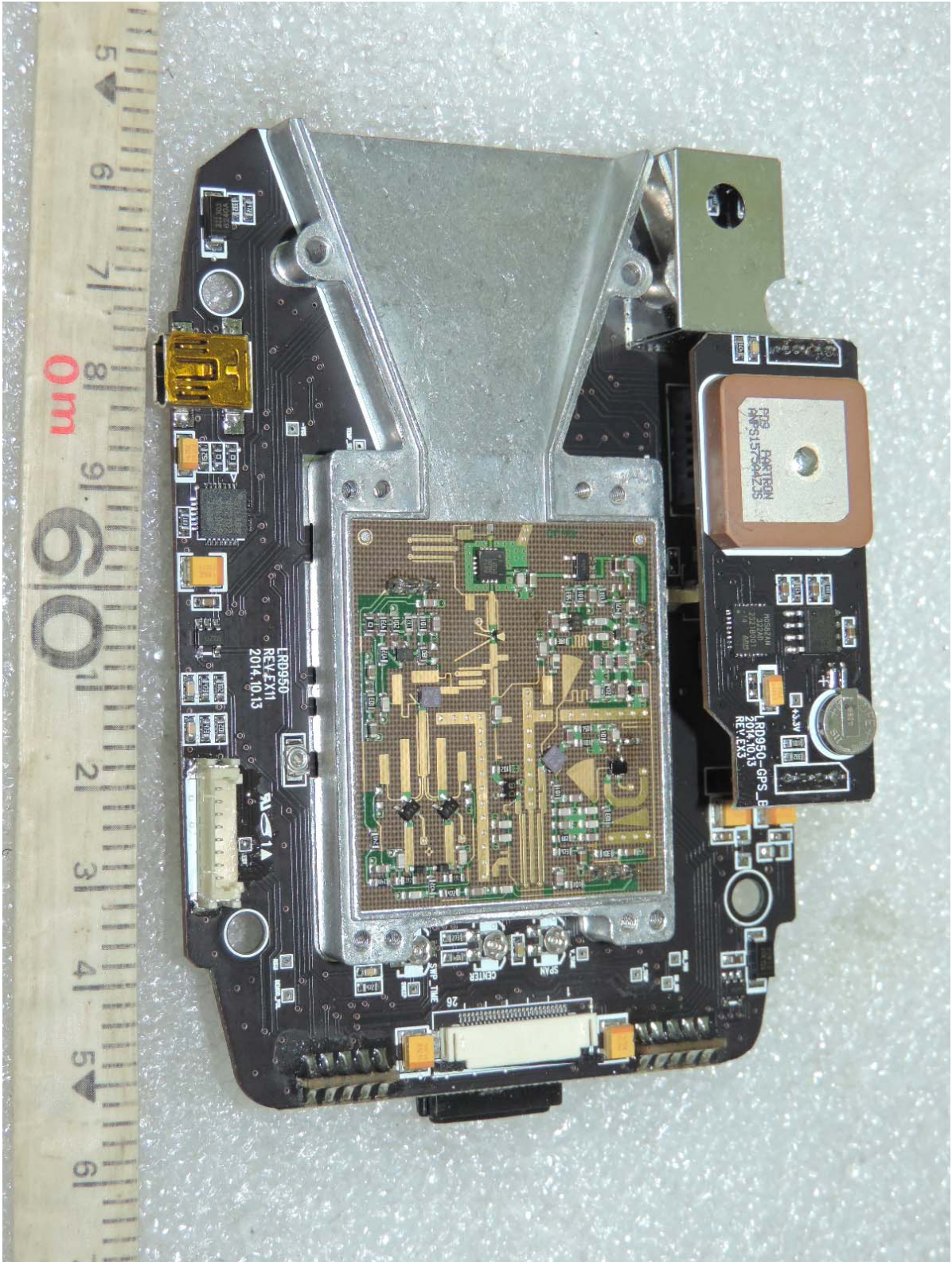
Inside view of EUT



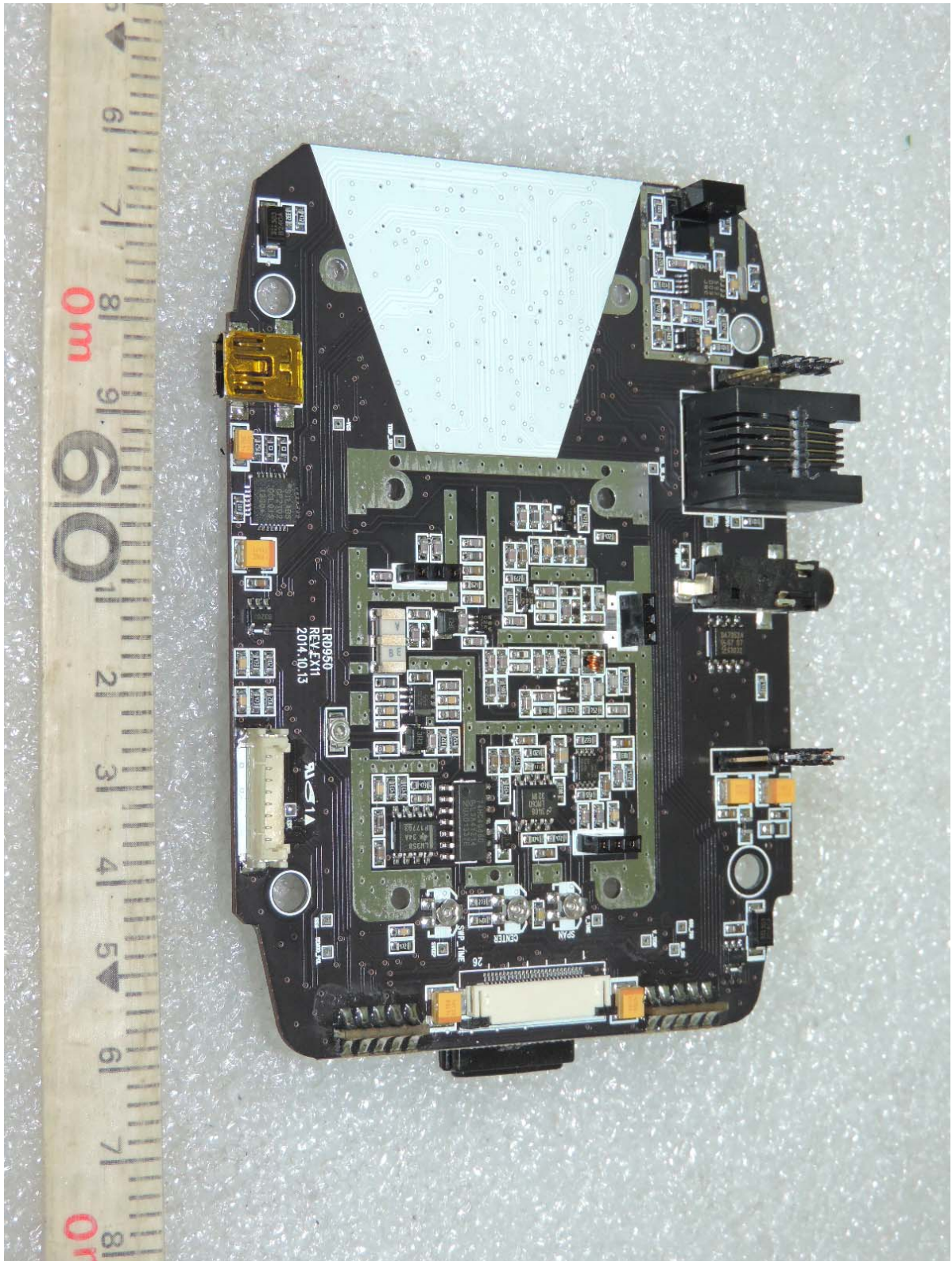
Top side view of main board #1



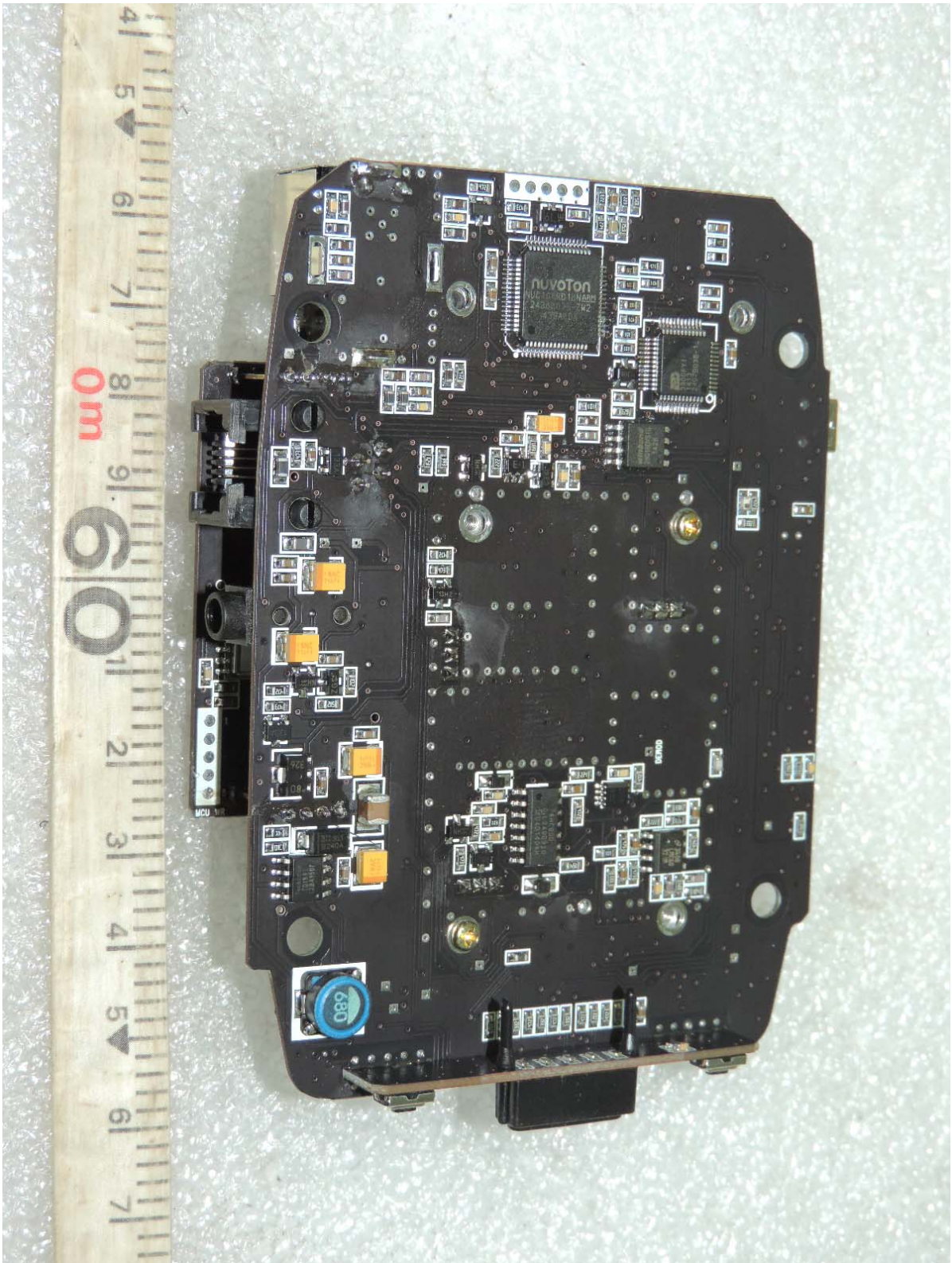
Top side view of main board #1-1 (without case)



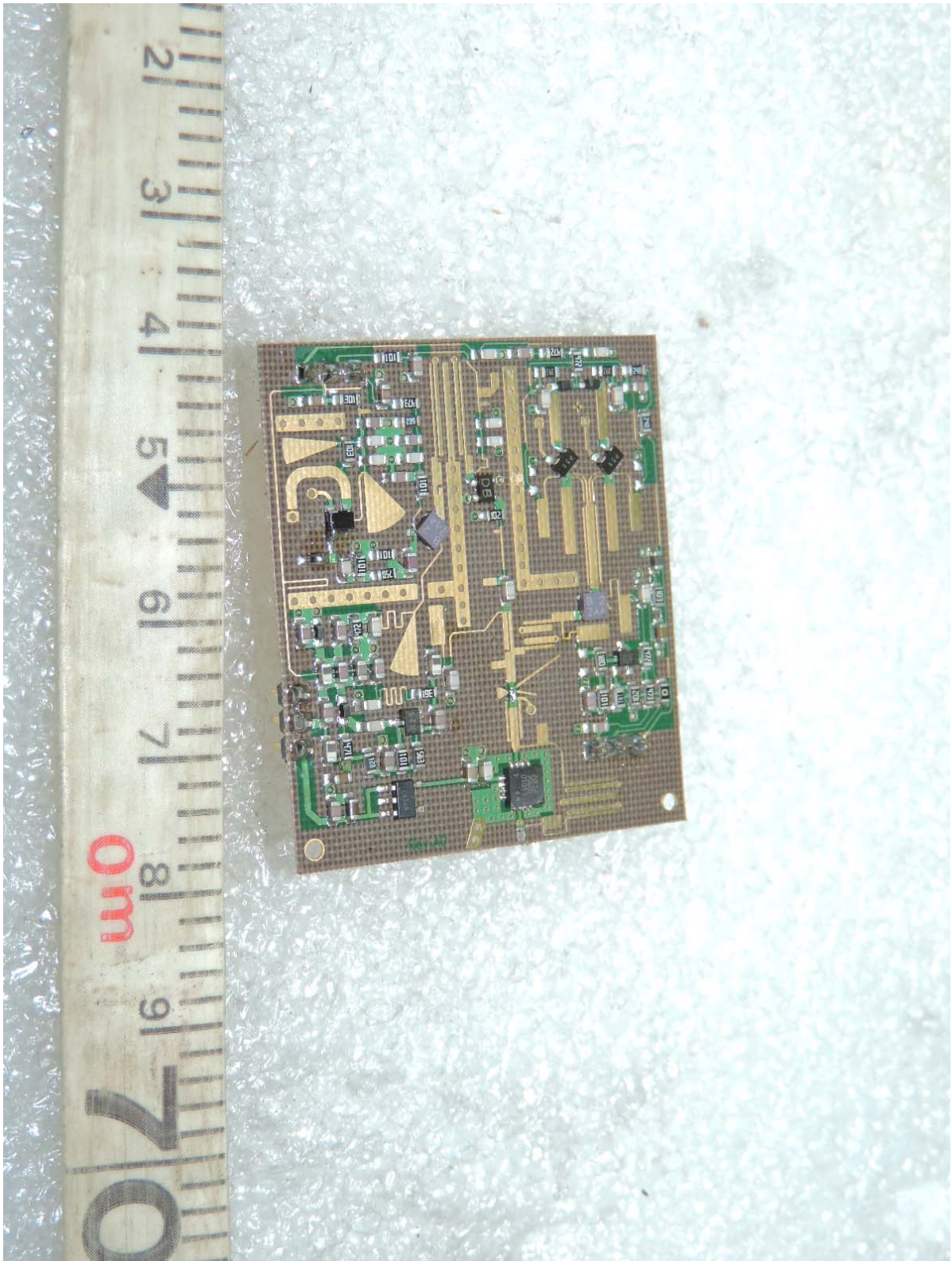
Top side view of main board #1-2 (without case and GPS board)



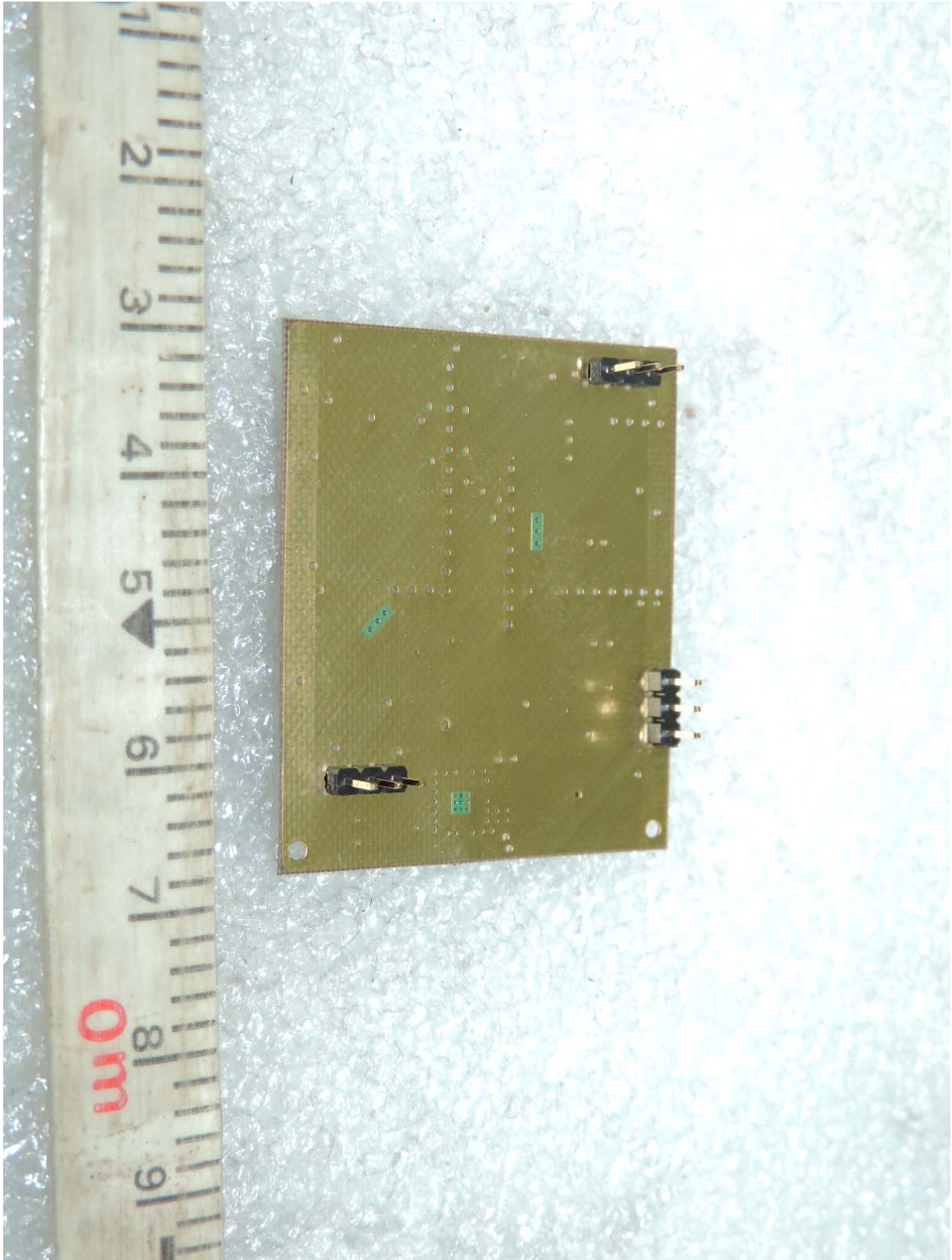
Bottom side view of main board



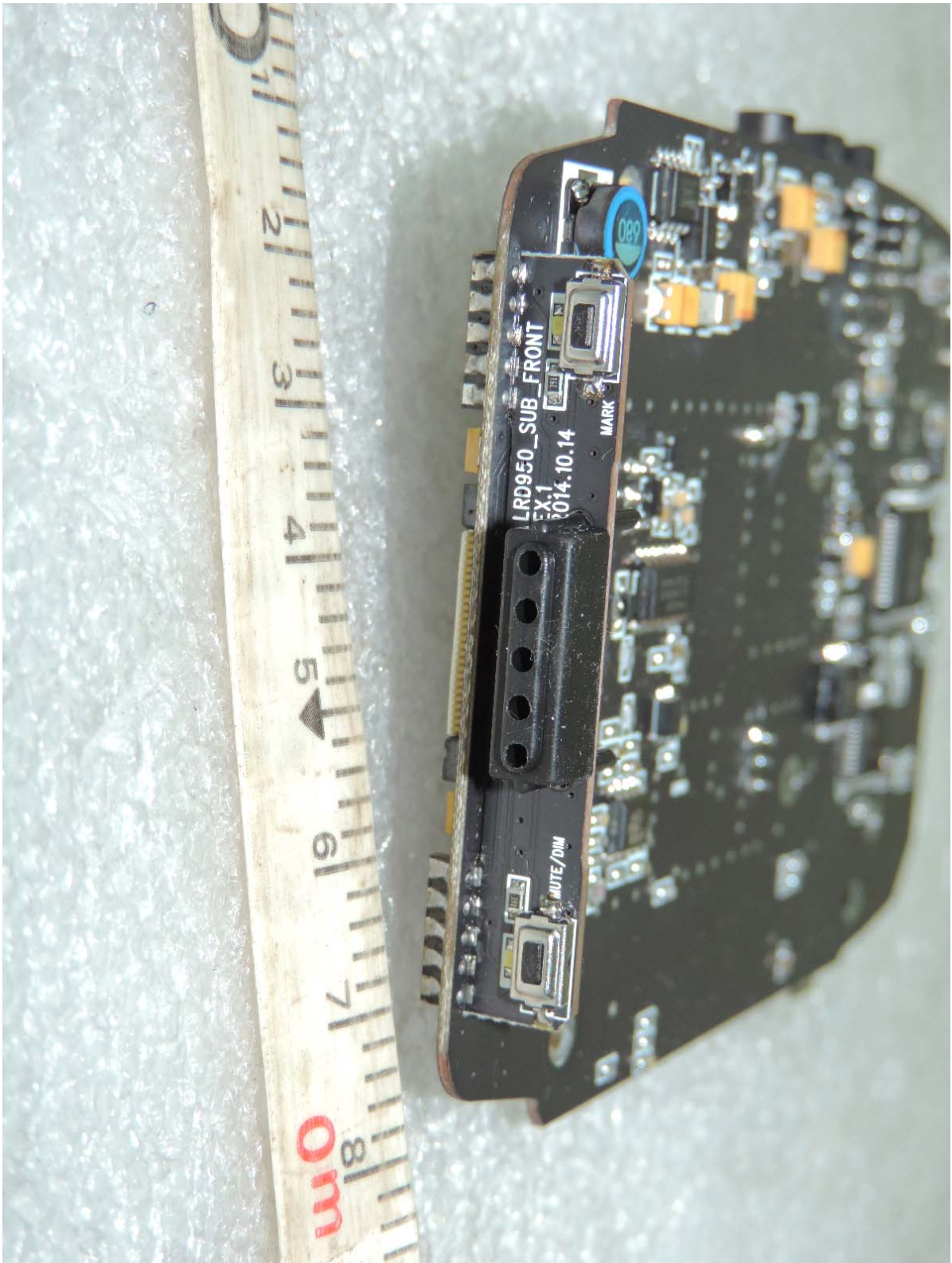
Top side view of Antenna main board



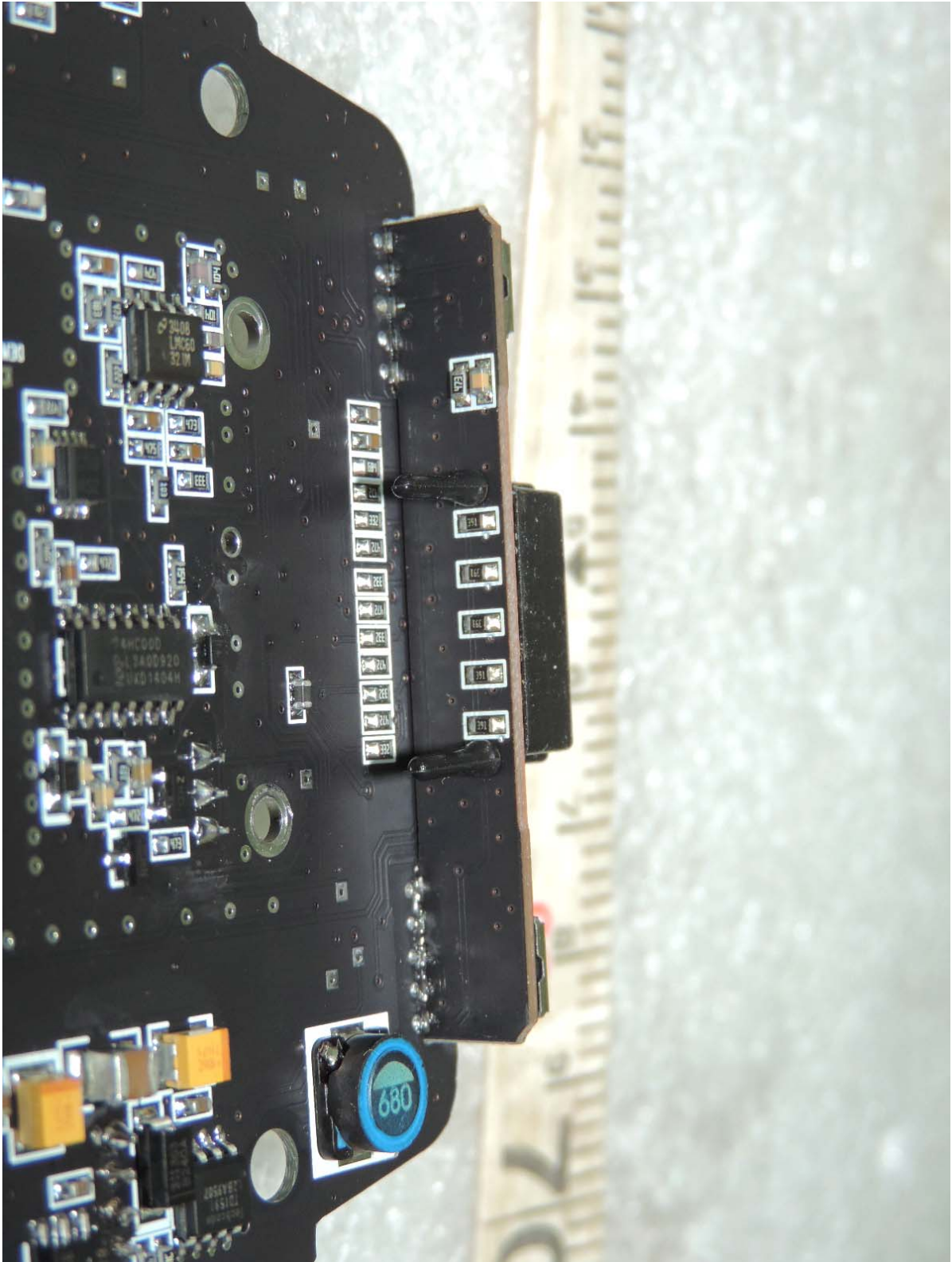
Bottom side view of Antenna main board



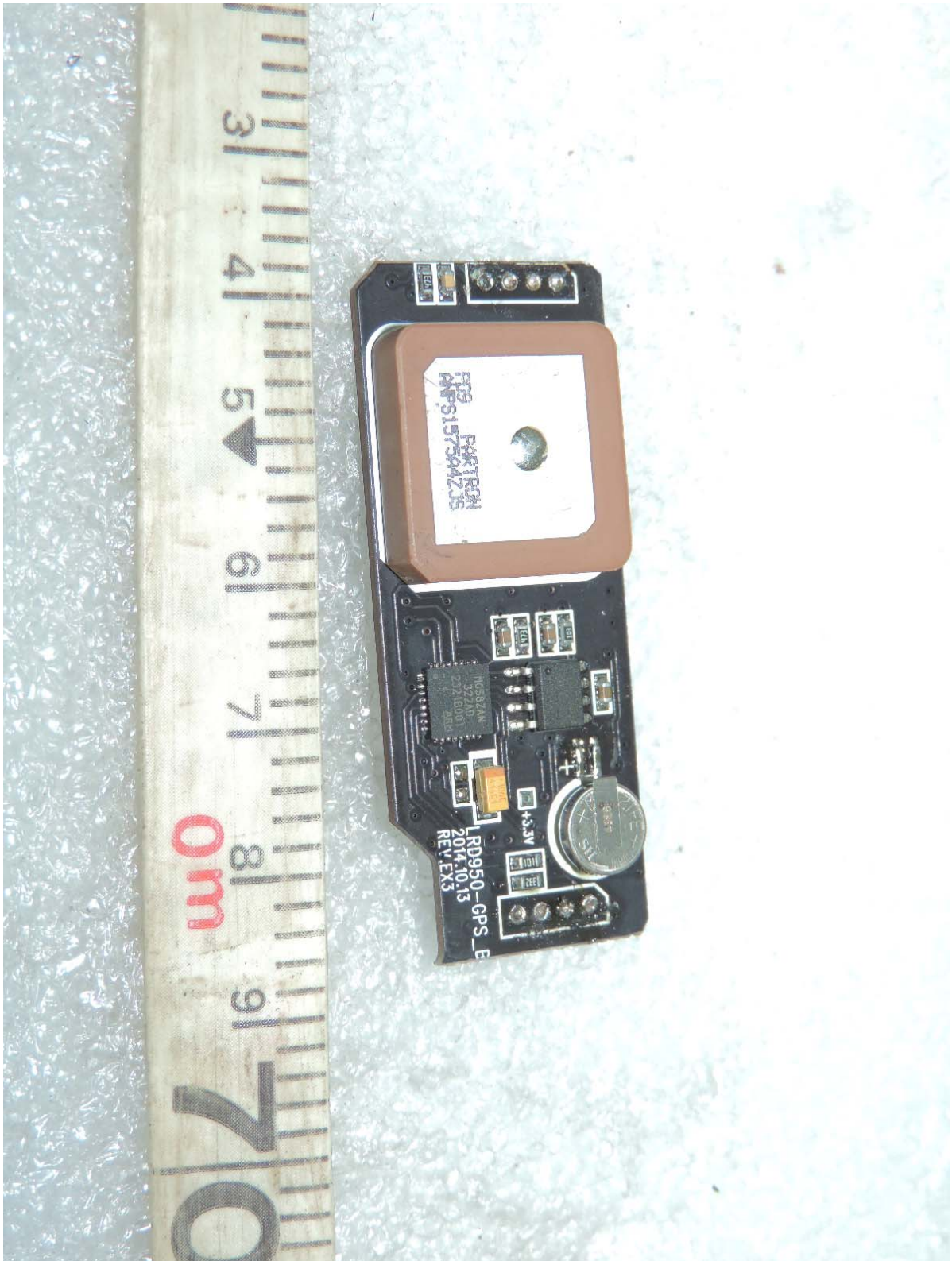
Top side view of sub board



Bottom side view of sub board



Top side view of GPS board



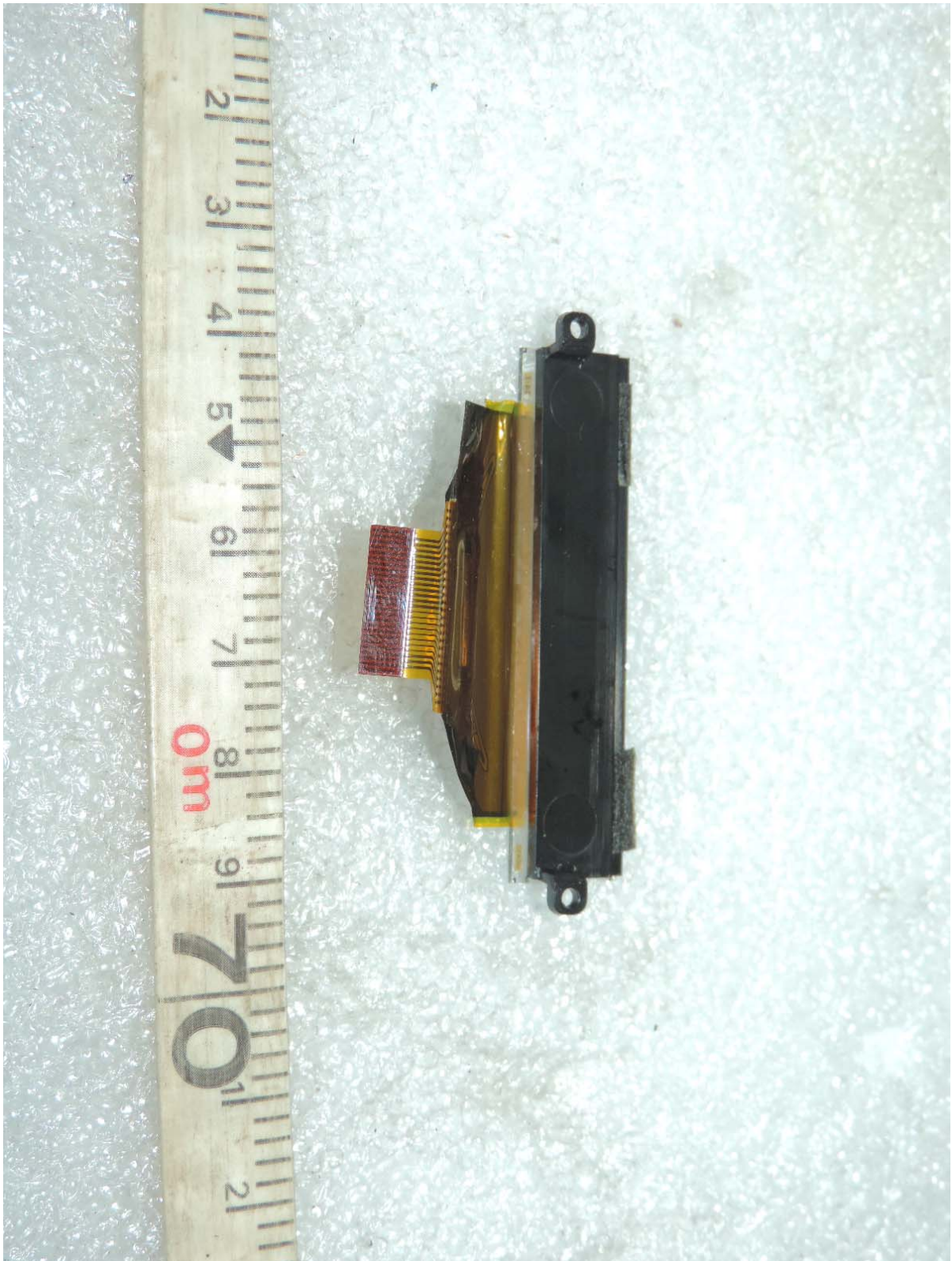
Bottom side view of GPS board



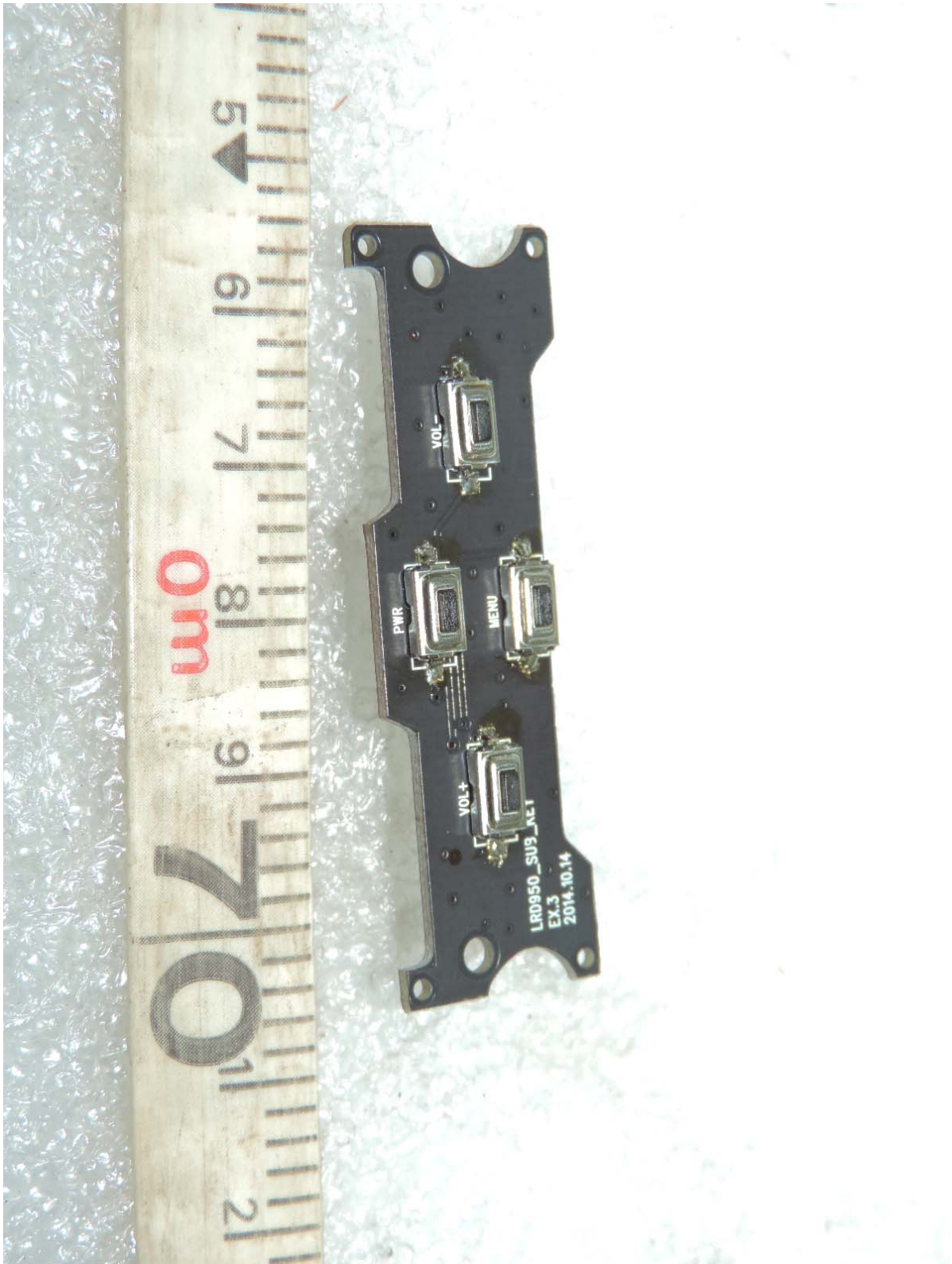
Top side view of display board



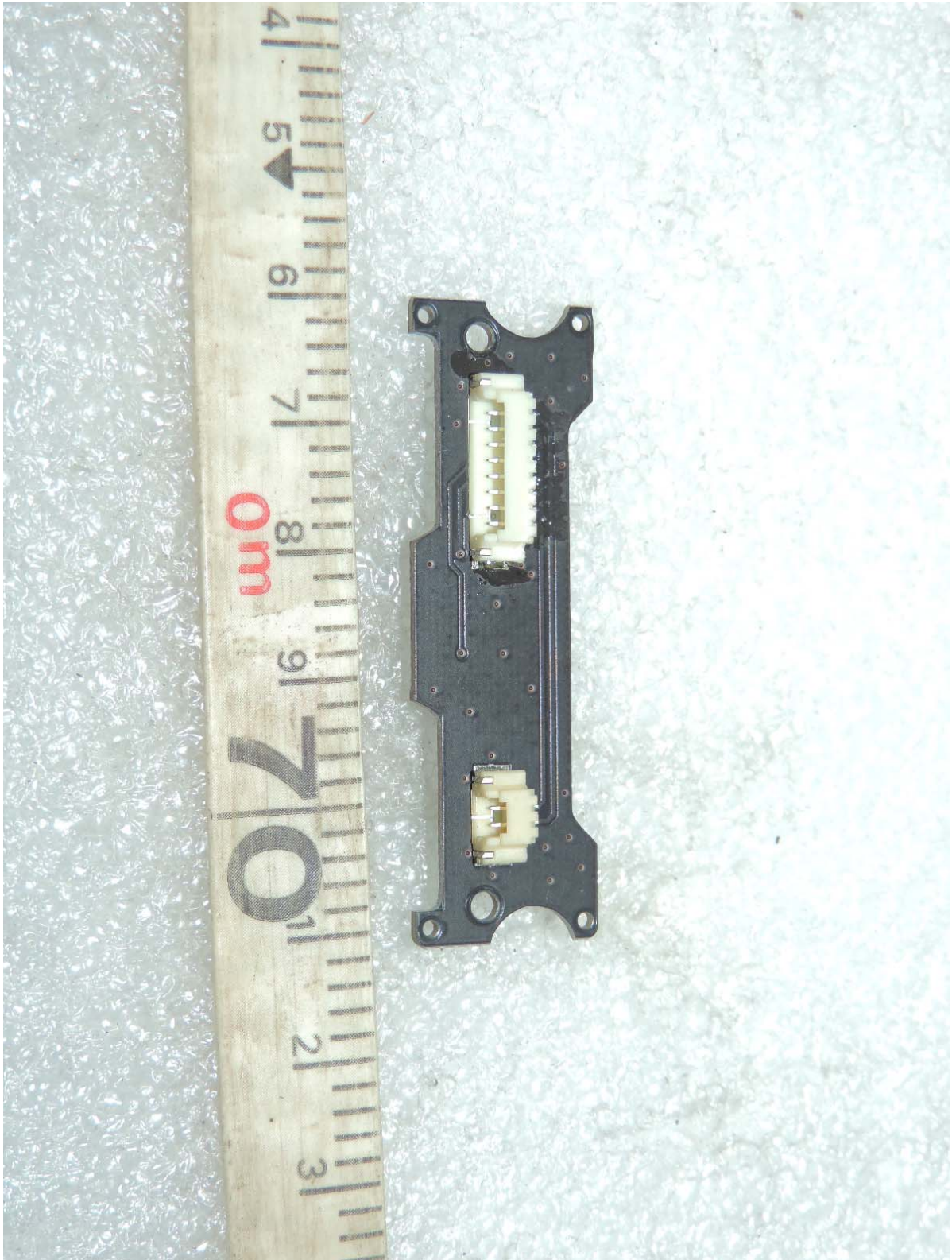
Bottom side view of display board



Top side view of OSD board



Bottom side view of OSD board



View of speaker

