

BearExtender PC

Windows XP Guide

Step 1: Install Software



Do not connect BearExtender PC's USB cable yet
If you have already connected it, please disconnect it.

Insert the CD-ROM into your computer.
When the Autorun menu appears, click "Windows XP".



It may take up to 30 seconds for the Autorun menu to appear, depending on the speed of your CD drive.

If the Autorun menu does not appear, Navigate to your CD drive, then right-click it and select "Open." Then double click the Setup program to begin.

Once the software has installed, connect BearExtender PC's USB cable directly to your computer.

A popup will appear in the bottom right corner of your screen.



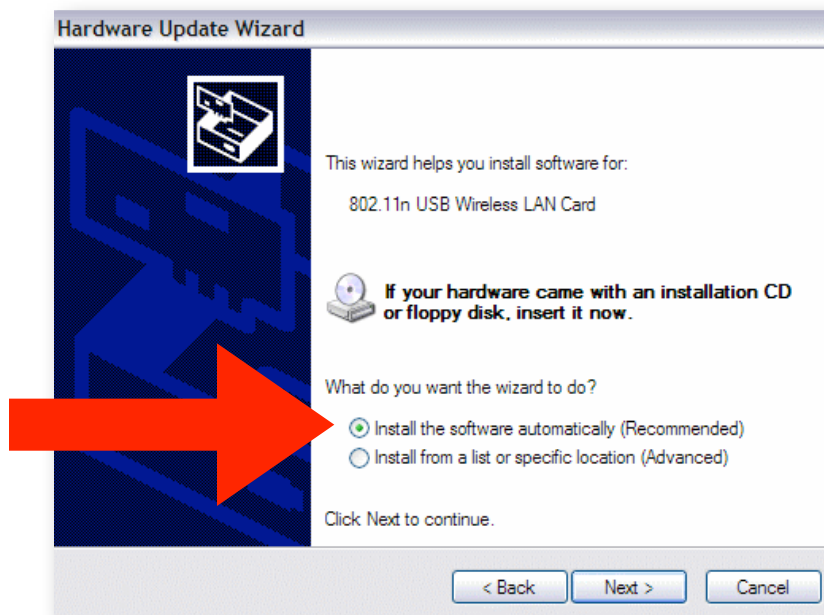
A second popup will confirm that the installation has completed.

Depending on your version of Windows XP Service Pack, you may not see a message saying the installation has completed.

Instead, you may see the Windows Hardware wizard. If the Windows Hardware wizard appears on your screen, on the first screen select "No, not this time."



Then on the next screen select "Install software automatically (Recommended)".



The hardware wizard will then complete the installation. Depending on your processor speed, this process can take up to 2 minutes.

Once completed, click the Finish button and proceed to the next step.

Step 2: Disable your Built-in Wi-Fi card

If your computer has a built-in Wi-Fi card, please disable it.

Some laptops have a ON/OFF switch for disabling the built-in Wi-Fi card. If your computer does not have a switch, go to Control Panel > Network Connections.

Then right-click your built-in Wi-Fi card and click "Disable."

You can repeat this step and select "Enable" when you wish to use your internal Wi-Fi card again.

Instructions continued on next page

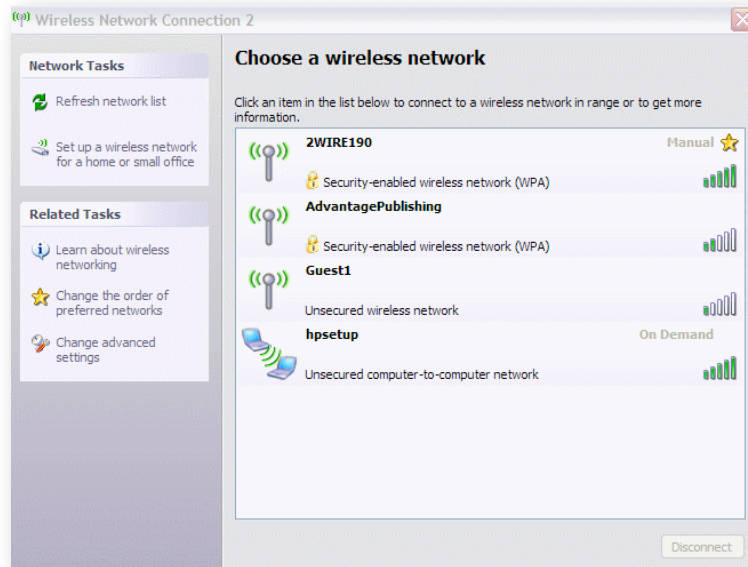
Step 3: Scan and Join a Network

Because BearExtender PC uses the built-in Windows XP interface for connecting to wireless networks, there is no new software to learn.

Simply right-click on the Network icon located in the bottom right corner of your screen:



Then select "View Available Networks".

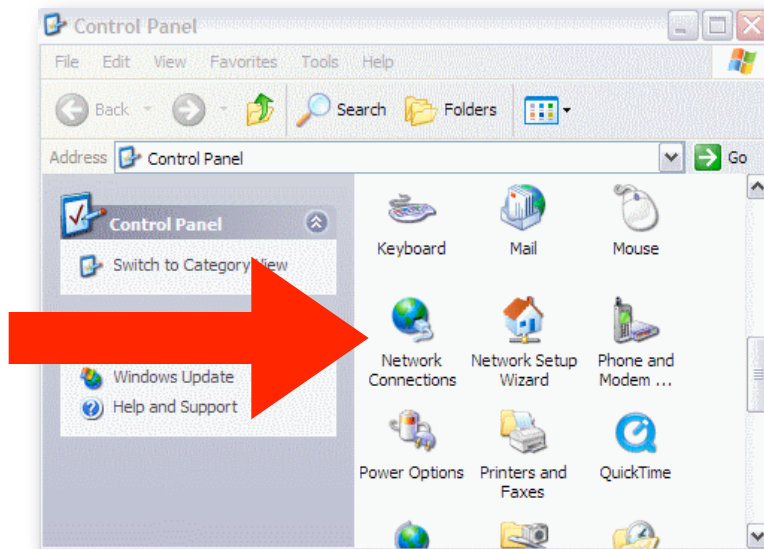


A list of nearby networks will appear.

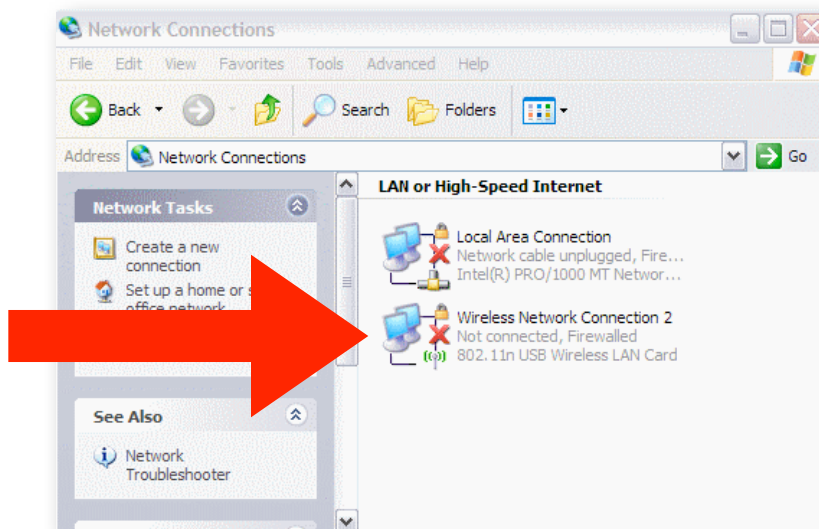
Select your network and click "Connect." You will be asked for a password if required.

If you are unable to locate the Network icon, follow these steps:

1. Go to Control Panel
2. Double click "Network Connections"
3. Then right-click "Wireless Connection 2" and select "View Available Wireless Networks"



The digit after "Wireless Network Connection" may vary if you have previously had other Wi-Fi adapters installed on your computer.



Congratulations

You have finished setting up BearExtender PC.

If you need additional help, please see the Troubleshooting section or contact us using the information at the end of this guide.

Troubleshooting

1. I do not see any connection icon in the bottom right of my screen, and when I follow the instructions to go to the device in the Control Panel > Network Connections I am not able to see the device there either.

Be sure you have run the Setup program from the CD in its entirety. If you have, and BearExtender PC is connected to your computer, please contact BearExtender support for further assistance.

2. The specifications for this product say 150 Mbps max speed, but the Connection Status tab reports that I am only connected at 54 Mbps, why?

This most likely means you are connected to an 802.11g router. To achieve speeds above 54 Mbps you must be connected to an 802.11n router. Depending on how your 802.11n router is set, you may connect above 54 mbps but below 150 Mbps.

For information on how to maximize transfer speeds by adjusting your router settings for optimal 802.11n performance, please contact BearExtender support. Please be sure to include your Wireless Router brand and model number.

3. When scanning for networks I see the exact same number of networks and the same signal strength compared to my internal WiFi card. How can this be?

There are two possible issues here. First, if you have not disabled your internal Wi-Fi card per this instruction manual, Windows is still using your internal card to scan for network connections. So even though BearExtender PC may be connected to your computer, your computer is not using it. Please follow the steps outlined in Step 2 of this document to ensure your internal card is disabled.

If you have confirmed your internal network card is disabled, the other possibility is there may not be any other Wi-Fi networks in range. Unlike 3G/cellular data service, which you have to pay for, Wi-Fi does not have a monthly service fee but you do need to be within range of a wireless network in order to use it.

If there is only one signal around you for several thousand feet, and it is ten feet away from you, both your internal WiFi card and BearExtender will probably detect it at close to 100% signal, but it may be the only network that either can detect.

This does not mean BearExtender PC is getting the same range as your internal card, it simply means there are no more signals within range of either device.

Contact Us

Email support is available 24 hours a day, 7 days a week.
The average response time is 6 to 12 hours.

Support@BearExtender.com

Email support is the fastest way to reach us, and most issues can be resolved over email.

BearExtender PC

Windows Vista Guide

Step 1: Install Software



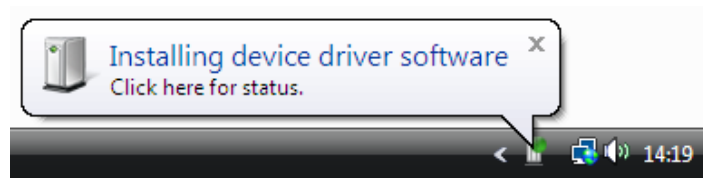
Do not connect BearExtender PC's USB cable yet
If you have already connected it, please disconnect it.

Insert the CD-ROM into your computer.
When the Autorun menu appears, click "Windows Vista".



It may take up to 30 seconds for the Autorun menu to appear, depending on the speed of your CD drive.

If the Autorun menu does not appear, Navigate to your CD drive, then right-click it and select "Open." Then double click the Setup program to begin.



Once the software has installed, connect BearExtender PC's USB cable directly to your computer. A popup will appear in the bottom right corner of your screen. A second popup will confirm that the installation has completed.

Step 2: Disable your Built-in Wi-Fi card

If your computer has a built-in Wi-Fi card, please disable it.

Some laptops have a ON/OFF switch for disabling the built-in Wi-Fi card. If your computer does not have a switch, go to Control Panel > Network and Sharing > "Change Adapter Settings".

Then right-click your built-in Wi-Fi card and click "Disable."
You can repeat this step and select "Enable" when you wish to use your internal Wi-Fi card again.

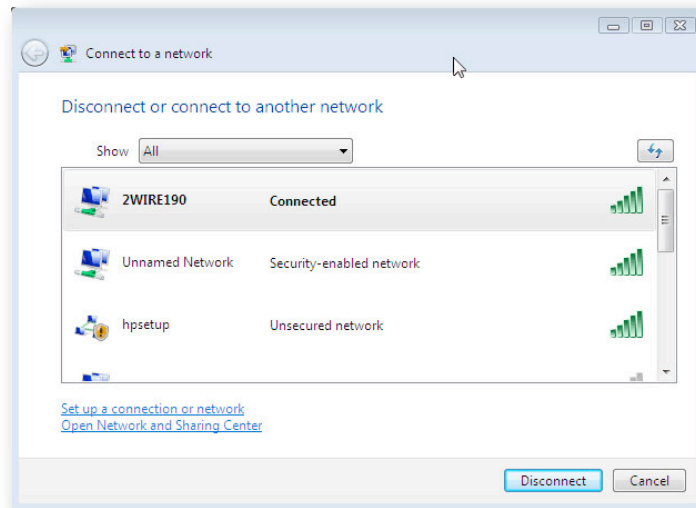
Step 3: Scan and Join a Network

Because BearExtender PC uses the built-in Windows Vista interface for connecting to wireless networks, there is no new software to learn.

Simply click on the Network icon located in the bottom right corner of your screen:



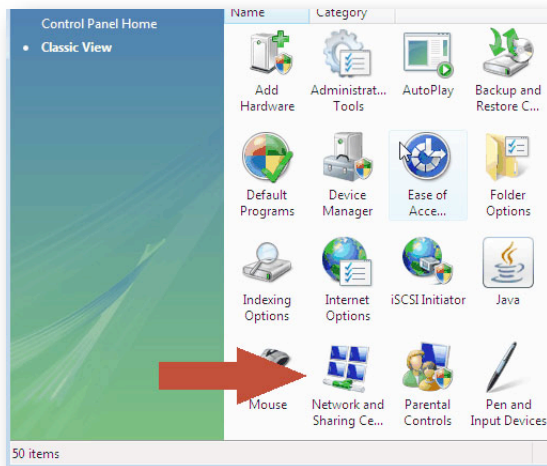
A list of nearby networks will appear.



Select your network and click "Connect." You will be asked for a password if required.

If you are unable to locate the Network icon, follow these steps:

1. Go to Control Panel
2. Click "Network and Sharing Center"
3. Click "Manage network connections"
4. Then right-click "802.11n Wi-Fi adapter" or "Wireless Connection 2" and select "Connect/Disconnect"



The digit after "Wireless Network Connection" may vary if you have previously had other Wi-Fi adapters installed on your computer.



Congratulations

You have finished setting up BearExtender PC.

If you need additional help, please see the Troubleshooting section or contact us using the information at the end of this guide.

Troubleshooting

1. I do not see any connection icon in the bottom right of my screen, and when I follow the instructions to go to the device in the Network and Sharing center I am not able to see the device there either.

Be sure you have run the Setup program from the CD in its entirety. If you have, and BearExtender PC is connected to your computer, please contact BearExtender support for further assistance.

2. The specifications for this product say 150 Mbps max speed, but the Connection Status tab reports that I am only connected at 54 Mbps, why?

This most likely means you are connected to an 802.11g router. To achieve speeds above 54 Mbps you must be connected to an 802.11n router. Depending on how your 802.11n router is set, you may connect above 54 mbps but below 150 Mbps.

For information on how to maximize transfer speeds by adjusting your router settings for optimal 802.11n performance, please contact BearExtender support. Please be sure to include your Wireless Router brand and model number.

3. When scanning for networks I see the exact same number of networks and the same signal strength compared to my internal WiFi card. How can this be?

There are two possible issues here. First, if you have not disabled your internal Wi-Fi card per this instruction manual, Windows is still using your internal card to scan for network connections. So even though BearExtender PC may be connected to your computer, your

computer is not using it. Please follow the steps outlined in Step 2 of this document to ensure your internal card is disabled.

If you have confirmed your internal network card is disabled, the other possibility is there may not be any other Wi-Fi networks in range. Unlike 3G/cellular data service, which you have to pay for, Wi-Fi does not have a monthly service fee but you do need to be within range of a wireless network in order to use it.

If there is only one signal around you for several thousand feet, and it is ten feet away from you, both your internal WiFi card and BearExtender will probably detect it at close to 100% signal, but it may be the only network that either can detect.

This does not mean BearExtender PC is getting the same range as your internal card, it simply means there are no more signals within range of either device.

Contact Us

Email support is available 24 hours a day, 7 days a week.
The average response time is 6 to 12 hours.

Support@BearExtender.com

Email support is the fastest way to reach us, and most issues can be resolved over email.

BearExtender PC

Windows 7 Guide

Step 1: Install Software



Do not connect BearExtender PC's USB cable

If you have already connected it, please disconnect it.

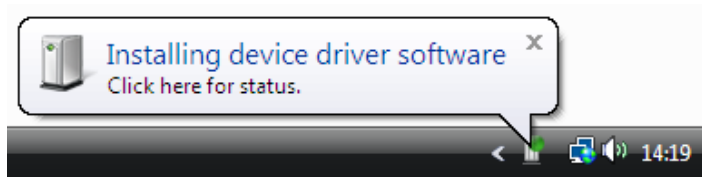
Insert the CD-ROM into your computer.

When the Autorun menu appears, click "Windows 7".



It may take up to 30 seconds for the Autorun menu to appear, depending on the speed of your CD drive.

If the Autorun menu does not appear, Navigate to your CD drive, then right-click it and select "Open." Then double click the Setup program to begin.



Once the software has installed, connect BearExtender PC's USB cable directly to your computer. A popup will appear in the bottom right corner of your screen. A second popup will confirm that the installation has completed.

Step 2: Disable your Built-in Wi-Fi card



If your computer has a built-in Wi-Fi card, please disable it.

Some laptops have a ON/OFF switch for disabling the built-in Wi-Fi card. If your computer does not have a switch, go to Control Panel > Network and Sharing > "Change Adapter Settings".

Then right-click your built-in Wi-Fi card and click "Disable." You can repeat this step and select "Enable" when you wish to use your internal Wi-Fi card again.

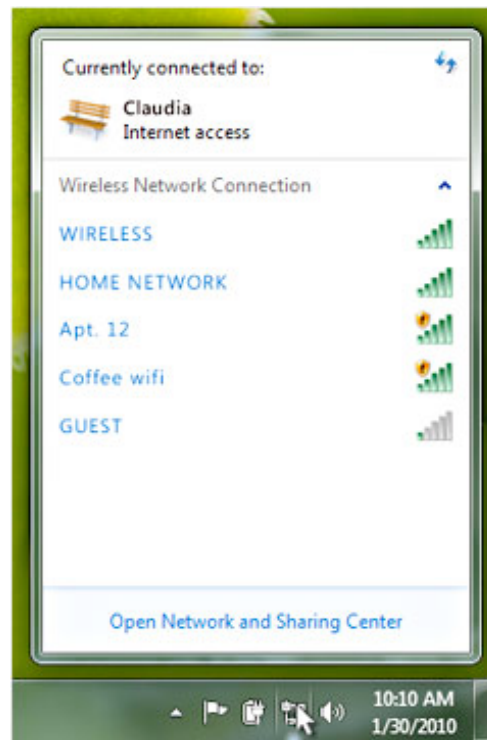
Step 3: Scan and Join a Network

Because BearExtender PC uses the built-in Windows 7 interface for connecting to wireless networks, there is no new software to learn.

Simply click on the Network icon located in the bottom right corner of your screen ( or ).

A list of nearby networks will appear.

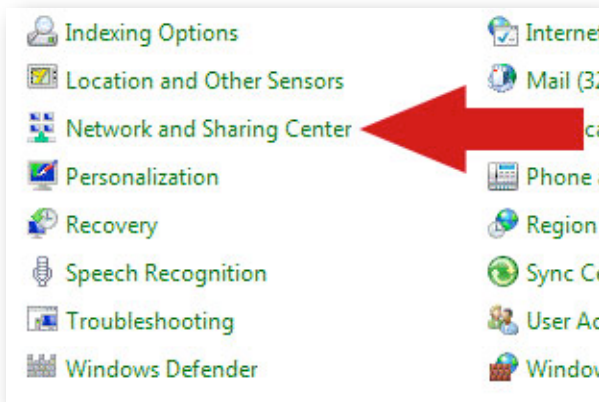
Select your network and click "Connect." You will be asked for a password if required.



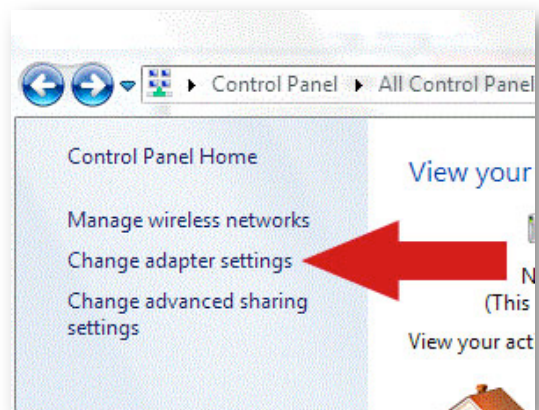
Click the Network icon near the clock so show nearby networks.

If you are unable to locate the Network icon, follow these steps:

1. Go to Control Panel
2. Click "Network and Sharing Center"
3. Click "Change adapter settings"
4. Then right-click "802.11n Wi-Fi adapter" or "Wireless Connection 2" and select "Connect/Disconnect"



The digit after "Wireless Network Connection" may vary if you have previously had other Wi-Fi adapters installed on your computer.



Congratulations

You have finished setting up BearExtender PC.

If you need additional help, please see the Troubleshooting section or contact us using the information at the end of this guide.

Troubleshooting

1. I do not see any connection icon in the bottom right of my screen, and when I follow the instructions to go to the device in the Network and Sharing center I am not able to see the device there either.

Be sure you have run the Setup program from the CD in its entirety. If you have, and BearExtender PC is connected to your computer, please contact BearExtender support for further assistance.

2. The specifications for this product say 150 Mbps max speed, but the Connection Status tab reports that I am only connected at 54 Mbps, why?

This most likely means you are connected to an 802.11g router. To achieve speeds above 54 Mbps you must be connected to an 802.11n router. Depending on how your 802.11n router is set, you may connect above 54 mbps but below 150 Mbps.

For information on how to maximize transfer speeds by adjusting your router settings for optimal 802.11n performance, please contact BearExtender support. Please be sure to include your Wireless Router brand and model number.

3. When scanning for networks I see the exact same number of networks and the same signal strength compared to my internal WiFi card. How can this be?

There are two possible issues here. First, if you have not disabled your internal Wi-Fi card per this instruction manual, Windows is still using your internal card to scan for network connections. So even though BearExtender PC may be connected to your computer, your computer is not using it. Please follow the steps outlined in Step 2 of this document to ensure your internal card is disabled.

If you have confirmed your internal network card is disabled, the other possibility is there may not be any other Wi-Fi networks in range. Unlike 3G/cellular data service, which you have to pay for, Wi-Fi does not have a monthly service fee but you do need to be within range of a wireless network in order to use it.

If there is only one signal around you for several thousand feet, and it is ten feet away from you, both your internal WiFi card and BearExtender will probably detect it at close to 100% signal, but it may be the only network that either can detect.

This does not mean BearExtender PC is getting the same range as your internal card, it simply means there are no more signals within range of either device.

Contact Us

Email support is available 24 hours a day, 7 days a week.
The average response time is 6 to 12 hours.

Support@BearExtender.com

Email support is the fastest way to reach us, and most issues can be resolved over email.

BearExtender PC

Windows 8 Setup Guide

Step 1: Install Software



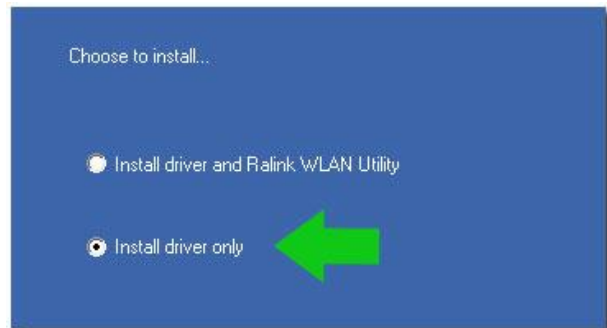
Do not connect the USB cable until software is installed.

Insert the CD or download install software from BearExtender.com/Support

When the Autorun menu appears, click "Install Now." For downloads, double-click [windows-setup.exe](#) to begin.

If the Autorun menu does not appear, navigate to your CD drive, and double-click to open.

During installation, when prompted, choose "Install driver only" for best performance.



Step 2: Plug BearExtender into a USB port

When installation is complete, [plug BearExtender PC into a USB port](#). A windows dialogue box should appear while Windows completes installation.

If your computer has an internal Wi-Fi card, you may have an on/off switch on the computer or keyboard. Turn off the internal Wi-Fi card or disconnect it from any active networks.

From the Windows 8 desktop, [click on the Wi-Fi icon](#) to open the Wi-Fi panel.



If your computer has an internal Wi-Fi card, BearExtender will appear as **“Wi-Fi 2”**

Scroll down the Wi-Fi Panel until you see **“Wi-Fi 2”**

Then select the network you wish to join and click “Connect”

If your computer does **not** have an internal Wi-Fi card, BearExtender will simply appear as **“Wi-Fi”**

Congratulations, setup is finished.

Troubleshooting

If you are unable to locate the Wi-Fi Panel

1. Open Control Panel

Press Windows key + X key, then select Control Panel

2. Click "Network and Internet"

Then click "Network and Sharing Center"

3. Click "Change adapter settings" on the left sidebar.

4. Right-click the "Wi-Fi 2" icon Then select "Connect/Disconnect".

The Connection Status shows that I am only connected at 54 Mbps

You may be connected to an older 802.11g router. To achieve speeds above 54 Mbps you must be connected to an 802.11n router.

Depending on how your 802.11n router is set, you may connect above 54 mbps but below 150 Mbps. For help adjusting your router settings for optimal 802.11n speeds, please contact BearExtender support.

I see the same number of networks as my internal Wi-Fi card.

If your computer has a built-in Wi-Fi card make sure your Windows 8 Wi-Fi panel shows both *Wi-Fi* and *Wi-Fi 2*. If you only see *Wi-Fi*, BearExtender may not be installed. In such a case please contact BearExtender support for further help.

If you see both Wi-Fi and Wi-Fi 2, there may not be any other wireless networks in range. Try both antennas (2 dBi and 5 dBi) and contact BearExtender for additional help.

For best performance, place your BearExtender PC higher up off the ground and close to a window if you are trying to pick up a signal from outside your home. Please also try adjusting BearExtender's antenna between pointing straight up and horizontal. In most cases BearExtender's antenna should be pointing straight up.

Contact Us

We are here to help. Please contact us before returning.

E-Mail: Support@BearExtender.com

Replies usually within 6 to 12 hours.

Replies sent 7 days a week from our **100% US based** support team.

Most issues can be resolved by email.

Email support is the fastest way to reach us, and most issues can be resolved over email.

For phone support information, please visit
www.BearExtender.com/Support

FCC STATEMENT

1. This device complies with Part 15 of the FCC Rules.

Operation is subject to the following two conditions:

(1) This device may not cause harmful interference.

(2) This device must accept any interference received, including interference that may cause undesired operation.

2. Changes or modifications not expressly approved by the party responsible for compliance could void the user's authority to operate the equipment.

NOTE: This equipment has been tested and found to comply with the limits for a Class B digital device, pursuant to Part 15 of the FCC Rules. These limits are designed to provide reasonable protection against harmful interference in a residential installation.

This equipment generates uses and can radiate radio frequency energy and, if not installed and used in accordance with the instructions, may cause harmful interference to radio communications. However, there is no guarantee that interference will not occur in a particular installation. If this equipment does cause harmful interference to radio or television reception, which can be determined by turning the equipment off and on, the user is encouraged to try to correct the interference by one or more of the following measures:

Reorient or relocate the receiving antenna.

Increase the separation between the equipment and receiver.

Connect the equipment into an outlet on a circuit different from that to which the receiver is connected.

Consult the dealer or an experienced radio/TV technician for help.

FCC Radiation Exposure Statement

This equipment complies with FCC radiation exposure limits set forth for an uncontrolled environment. This equipment should be installed and operated with minimum distance 20 cm between the radiator and your body.