



Thank you for purchasing BearExtender!

Please select your version of Mac OS X to begin:

[Mac OS X 10.8 Mountain Lion](#)

[Mac OS X 10.7 Lion](#)

[Mac OS X 10.6 Snow Leopard](#)

[Mac OS X 10.5 Leopard](#)

Checking your version of Mac OS X

Go to the Apple Menu, and choose “About This Mac.”
Then look for the version number of Mac OS X you have installed.





Step 1: Install

Open the **Mac OS X Mountain Lion** folder on the CD, then double click "Install".
When the installation has finished, restart your Mac.

Step 2: Plug in BearExtender

Connect the USB cable directly to your Mac.
If you are using a Macintosh desktop computer, do not use the low power USB ports on the keyboard.

Step 3: Turn Off Wi-Fi

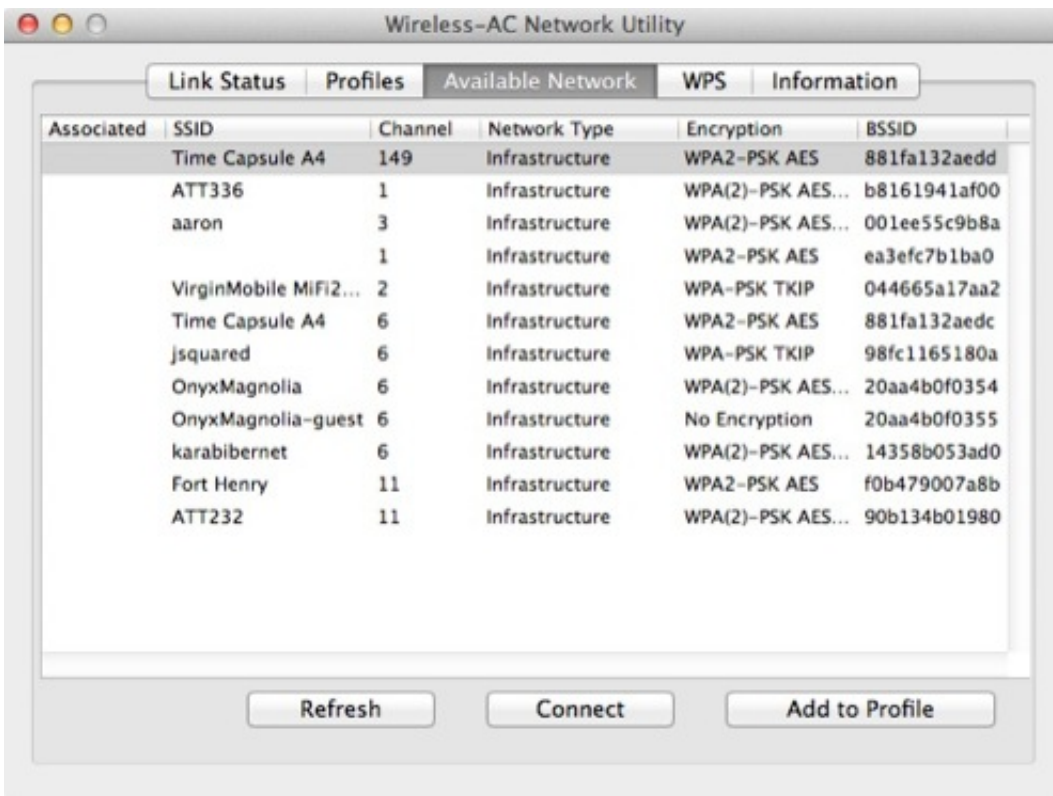
If your Mac has a built-in Wi-Fi (AirPort) card, please turn it off while using BearExtender.



Step 4: Join a network from the BearExtender window

Select your network from the list and click "Connect".
Once you are connected, you can close or minimize this window.

Use this window to scan and connect to networks in place of the AirPort (Wi-Fi) menu.



Congratulations!

BearExtender is now ready for use.

If you need help, please view the [Troubleshooting page](#) or [contact us](#).

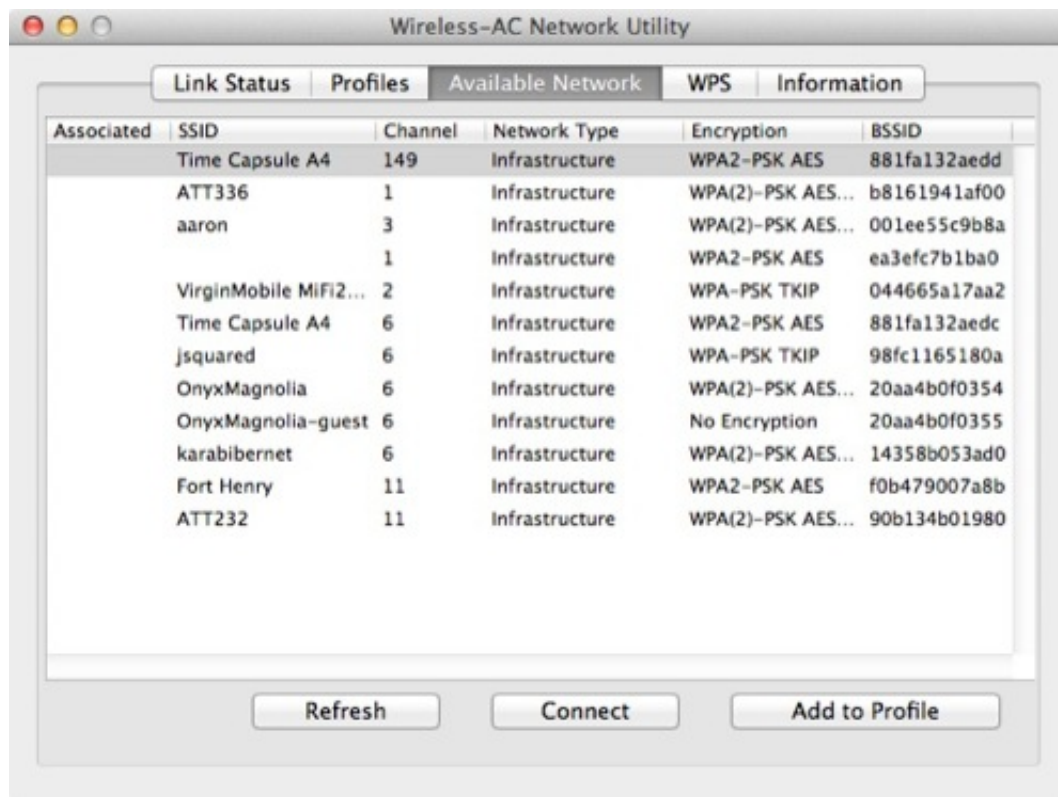
Next Steps

Learn how to create a [Favorite Network >>](#)



Using the BearExtender Window

The BearExtender window will automatically open whenever BearExtender is plugged in. BearExtender will then perform a scan of nearby networks and connect to the strongest open network.



Connecting to a Network

Select a network from the list and click **Connect**.
If your network does not appear in the list immediately, click **Refresh**.

The signal strength is displayed as a percent out of 100.
Once you are connected to a network, you can minimize or close the BearExtender window.

Creating a Favorite Network

You can save frequently accessed Wi-Fi network passwords, so you will not need to re-enter the

password each time.

1. Click once on the network in the “Networks” list.
2. Click **Add to Profile**
3. Enter the network password (network key), then click “OK”.

Wireless Network Security Properties

Profile Name : Time Capsule A4

SSID : Time Capsule A4

This is a computer-to-computer (AdHoc) network; wireless access points are not used.

Channel : 1

Wireless Network Security Properties

This network requires a key for the following :

Network Authentication : WPA2_PSK

Data Encryption : AES

ASCII

Key index (advanced) : 1

Network key :

Confirm network key :

Cancel OK

Comparing signal strength

To compare BearExtender’s signal strength with your internal AirPort (Wi-Fi) card, download a scanning program such as [iStumbler](#).

iStumbler and other scanning programs can display your internal AirPort card’s signal strength as a percentage for comparison with BearExtender.

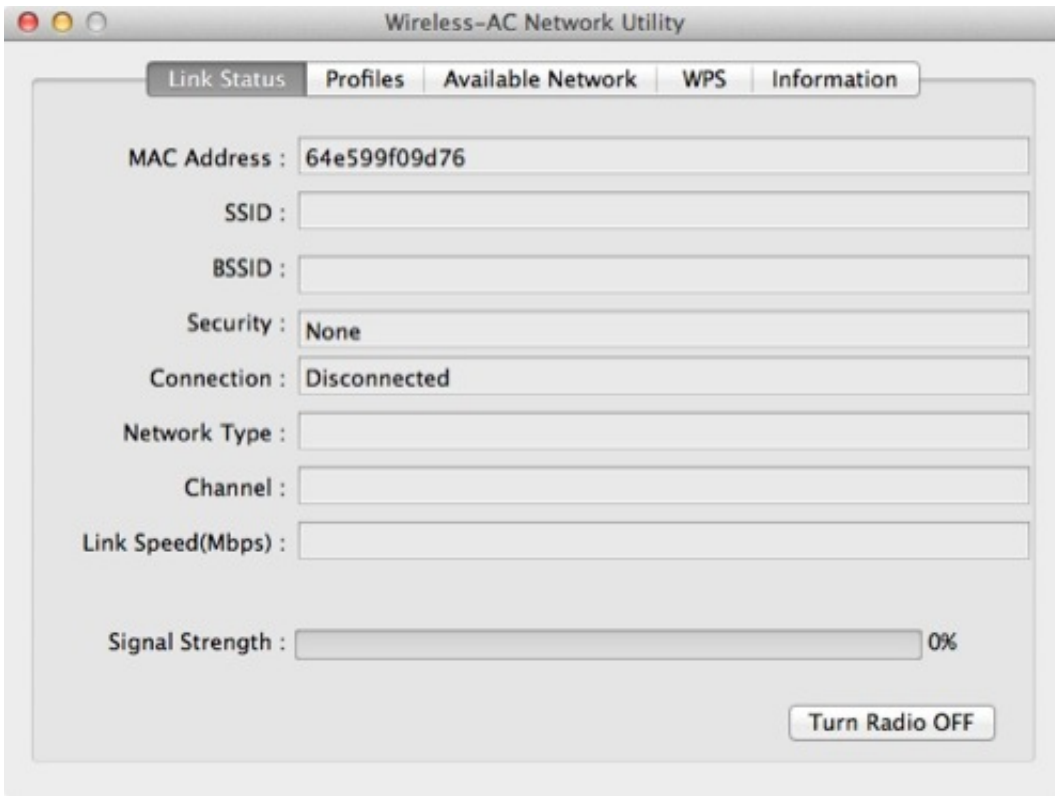
Changing the Country Region Code

The country region code is set to channels 1-11 by default for use in the United States. In other parts of the world, you may be able to use additional channels, such as 1-13 in most European countries.

Channel 14 is currently limited to only a few countries such as Japan.

Disabling BearExtender

To disable BearExtender and use your internal Wi-Fi (AirPort) card, click “Turn Radio Off” on the “Link Status” tab.





FCC Notice

Any changes or modifications not expressly approved by the responsible party could void the user's authority to operate this equipment.

FCC Radiation Exposure Statement

This equipment complies with FCC RF radiation exposure limits set forth for an uncontrolled environment. This transmitter must not be operated with any other antenna or transmitter and is designed for indoor use. This equipment should be placed a minimum of 20 centimeters from the human body when in use. The USB cable included with this product is 60 centimeters in length.

This equipment complies with Part 15 of the FCC Rules.

Operation is subject to the following two conditions:

- (1) This device may not cause harmful interference, and
- (2) This device must accept any interference received, including interference that may cause undesired operation.



Optimizing Performance

Although BearExtender has a powerful transceiver and external antenna, you may still desire a stronger signal in certain environments.

The primary culprit is interference. 802.11b, 802.11g, 802.11n and 802.11ac share radio frequencies with devices such as cordless phones, cellular phones and microwaves. Being in the proximity of any combination of these devices will result in interference.

Solid concrete walls, large metallic appliances can also produce interference passively by deflecting Wi-Fi signals.

If you are an RV or Marine user, try using BearExtender outside or above any large metal plating in your vehicle or boat. Aluminum and other metals reflect Wi-Fi signals.

To minimize interference, try the following:

Change BearExtender's antenna position between horizontal and vertical.

BearExtender's antenna has unique sensing properties in the horizontal and vertical direction. By changing the angle of the antenna, you can direct BearExtender to focus on specific networks.

Reposition yourself

Move away from devices that may cause interference and thick solid walls that may reflect Wi-Fi signals.

Change your Wireless Router's broadcast channel.

Wireless routers can communicate on different channels. Many wireless routers ship by default locked onto one channel.

By changing your wireless router to broadcast on a less crowded channel, you can maximize speed and decrease interference.

This usually fixes the problem if you are located in a high density area, such as a multi-level apartment building. Consult your wireless router's manual for instructions.

In general, changing the position of BearExtender's antenna and relocating yourself should improve your connection.

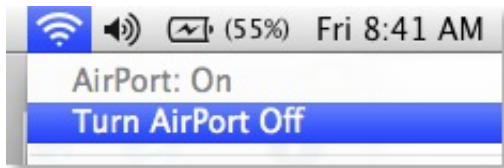


Troubleshooting

If you need further assistance, please do not hesitate to [contact us](#).

Step 1: Turn off AirPort (Wi-Fi)

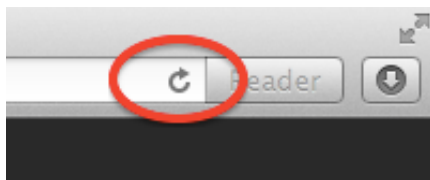
If your Mac has an internal Wi-Fi card, turn it off when using BearExtender.



Step 2: Refresh

Refresh your web browser a few times.

If your Mac has been sleeping, BearExtender takes a few seconds to scan and re-connect.



Step 3: Unplug and Restart

Unplug the USB cable then restart your Mac and try again.

Step 4: Remove Saved Networks

If you have created any Favorite Networks, please delete them on the "Profile" tab.

If not, check your Wi-Fi network password again and try entering it carefully.

Step 5: Rebuild Network Preferences

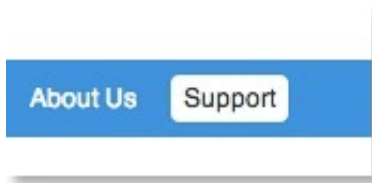
If you have updated Mac OS X recently ,you may need to rebuild your Network Preferences.

Click [here](#) to view the steps.



Step 6: Reinstall or update driver

Please try reinstalling the driver, or visit www.BearExtender.com/support to download the latest version.



Contact Us

If you have tried all of the above steps without success, please [contact us](#).



Please try the steps on the [Troubleshooting page](#) first.

Most issues can be resolved by trying these steps.

E-Mail Support

support@bearextender.com

Replies usually within 6 to 12 hours.

Replies sent 7 days a week from our 100% US based support team.

Most issues can be resolved by email.

Telephone Support

(678) 971-9367

Telephone support hours are Monday through Friday,
10AM-5:00PM Eastern Standard Time.
