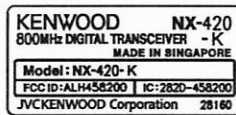
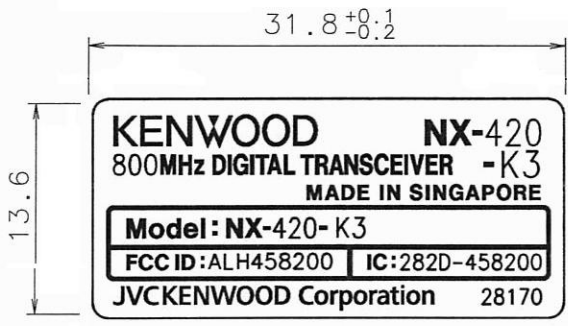


(2:1)

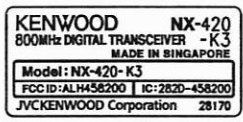


(1:1)

	DESIGN	DATE 2012-10-18	MODEL
		JVCKENWOOD Corporation	MODEL NAME PLATE_NX-420(K)



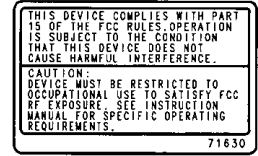
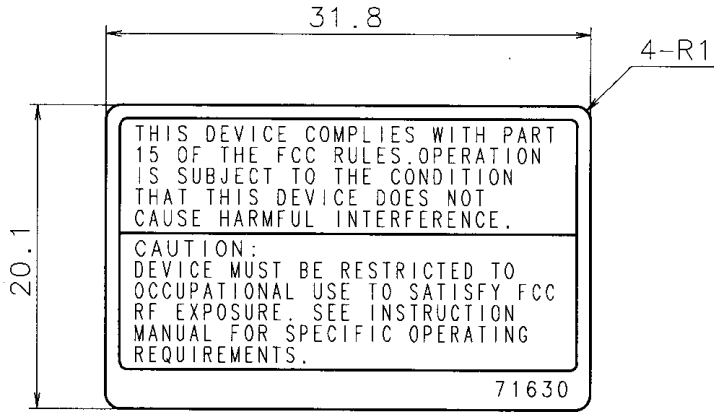
(2:1)



(1:1)

	DESIGN	DATE 2012-10-18	MODEL
		JVCKENWOOD Corporation	MODEL NAME PLATE_NX-420(K3)

1	2	3	4
TOLERANCE (C)	MMV	SYMBOL	REVISION NO. CODE ISSUED DATE
~ 6 ±0.15	-	△ XALL	52607 NEW ADDITION R. OTSUKA 2004-03-11
6 ~ 30 ±0.20			
30 ~ 80 ±0.30			
80 ~250 ±0.40			
250~500 ±0.55			



(1:1)

NOTES:

FOR DETAILS ON PRINTING, REFER TO THE FILM.  
 COLORS SHALL BE AS FOLLOWS:  
 LETTERS AND LINES: BLACK BACKGROUND: SILVER

PRESURE-SENSITIVE ADHESIVE MUST NOT CAUSE DISCOLORATION.

MUST BE PRINTED WITH FILM.

FILM TO BE SUPPLIED BY KENWOOD.

PER SHEET: 10PCS

SEE APPROVED SAMPLE FOR OTHER DETAILS.

-	-	-	-	AL EVAPORATION PLATE ±0.1 FROSTED SILVER	SEAL PRINTING, STRONG TACKIFIER, LAMINATE (FROSTING)	Y50-5870-10	-
NO.	PART NUMBER	NOTE	MATERIAL	FINISH	MODEL	QTY.	
SCALE	2:1	DESIGNED	CHECKED	APPROVED	PART NAME	-	
UNIT	mm				STANDARD LABEL	-	
		DATE	2004-03-11		DRAWING NUMBER	MMV	
					PART NO.	SHEET NO.	REL.
JIS Z8310-84	<b>KENWOOD</b>	Kenwood Corporation		B42-7163-04	1/1	00	S

DRWN. DATE 2004-03-11

#

NX-420-K, NX-420-K3  
FCC ID: ALH458200  
IC: 282D-458200



NX-420-K, NX-420-K3  
FCC ID: ALH458200  
IC: 282D-458200

