
	<u>Date(s) of Evaluation</u> Aug 23-28, Oct3, 2012	<u>Test Report Serial No.</u> 081612ALH-T1189-S90V	<u>Test Report Revision No.</u> Rev. 1.0 (1st Release)	 Test Lab Certificate No. 2470.01
	<u>Test Report Issue Date</u> Oct. 17, 2012	<u>Description of Test(s)</u> Specific Absorption Rate	<u>RF Exposure Category</u> Occupational (Controlled)	

**APPENDIX D - SAR TEST SETUP & DUT PHOTOGRAPHS**

<b>Applicant:</b>	<b>Kenwood USA Corporation</b>	<b>FCC ID:</b>	<b>ALH434901</b>	<b>Freq:</b>	<b>150.8 - 173.4 MHz</b>	<b>KENWOOD</b>
<b>DUT Type:</b>	<b>Portable FM VHF PTT Radio Transceiver</b>	<b>Model(s):</b>	<b>TK-2400-K</b>	<b>TK-2400-K2</b>		
2012 Celltech Labs Inc.	This document is not to be reproduced in whole or in part without the prior written permission of Celltech Labs Inc.					Page 79 of 114

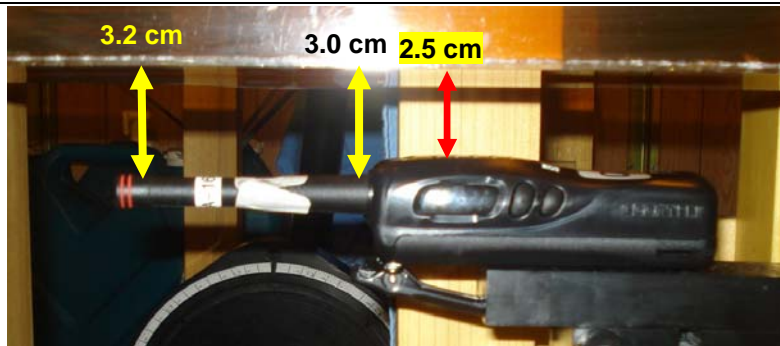
**FACE-HELD SAR TEST SETUP PHOTOGRAPHS**



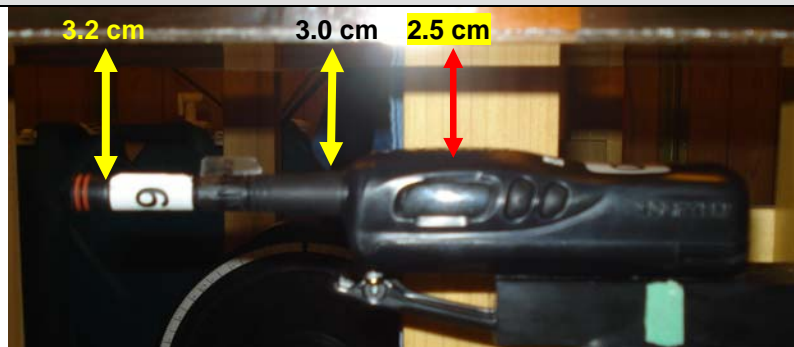
**Face-held SAR Configuration Test Setup**

<b>Applicant:</b>	<b>Kenwood USA Corporation</b>	<b>FCC ID:</b>	<b>ALH434901</b>	<b>Freq:</b>	<b>150.8 - 173.4 MHz</b>	<b>KENWOOD</b>
<b>DUT Type:</b>	<b>Portable FM VHF PTT Radio Transceiver</b>	<b>Model(s):</b>	<b>TK-2400-K</b>	<b>TK-2400-K2</b>		
2012 Celltech Labs Inc.		This document is not to be reproduced in whole or in part without the prior written permission of Celltech Labs Inc.				Page 80 of 114

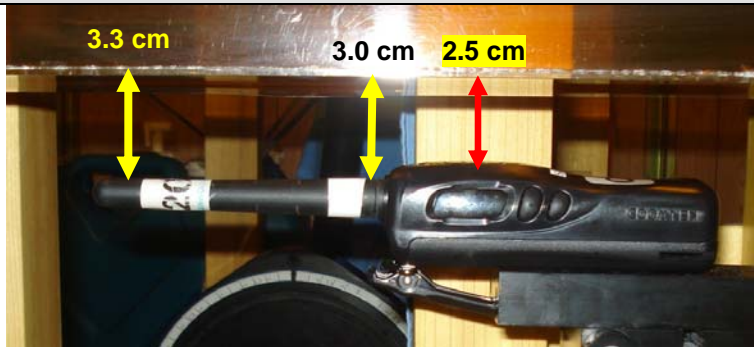
## FACE-HELD SAR TEST SETUP PHOTOGRAPHS



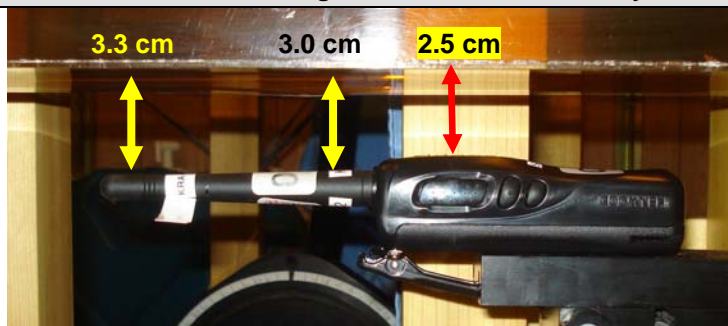
Face-held SAR Configuration - Antenna 1, Battery a



Face-held SAR Configuration - Antenna 2, Battery a



Face-held SAR Configuration - Antenna 3, Battery a

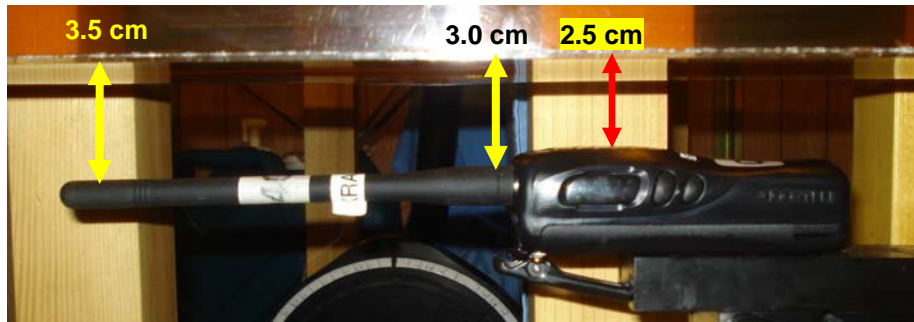


Face-held SAR Configuration - Antenna 4, Battery a

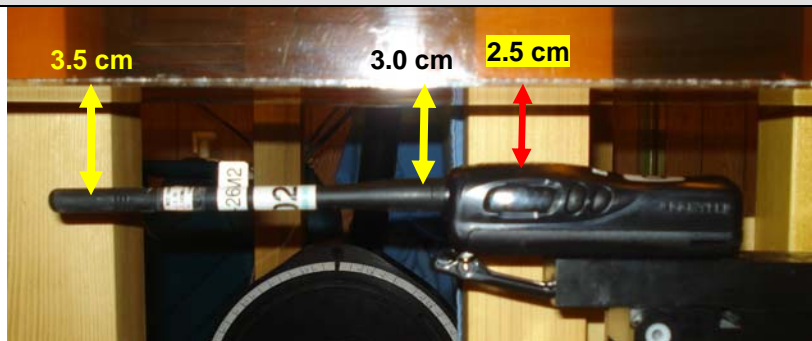
Applicant:	Kenwood USA Corporation	FCC ID:	ALH434901	Freq:	150.8 - 173.4 MHz	<b>KENWOOD</b>
DUT Type:	Portable FM VHF PTT Radio Transceiver	Model(s):	TK-2400-K	TK-2400-K2		
2012 Celltech Labs Inc.		This document is not to be reproduced in whole or in part without the prior written permission of Celltech Labs Inc.				Page 81 of 114



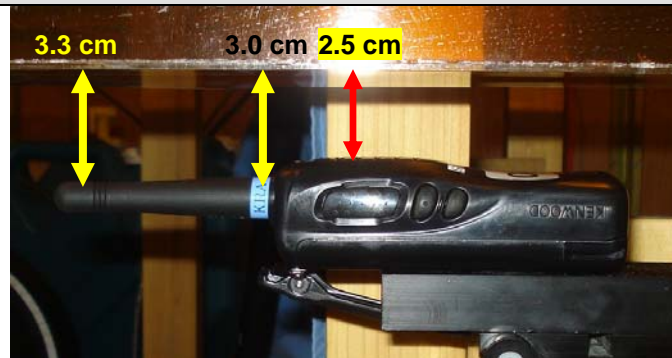
## FACE-HELD SAR TEST SETUP PHOTOGRAPHS



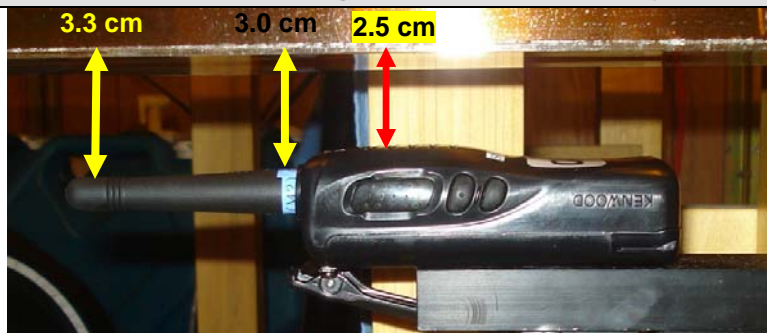
Face-held SAR Configuration - Antenna 5, Battery a



Face-held SAR Configuration - Antenna 6, Battery a





Face-held SAR Configuration - Antenna 7, Battery a

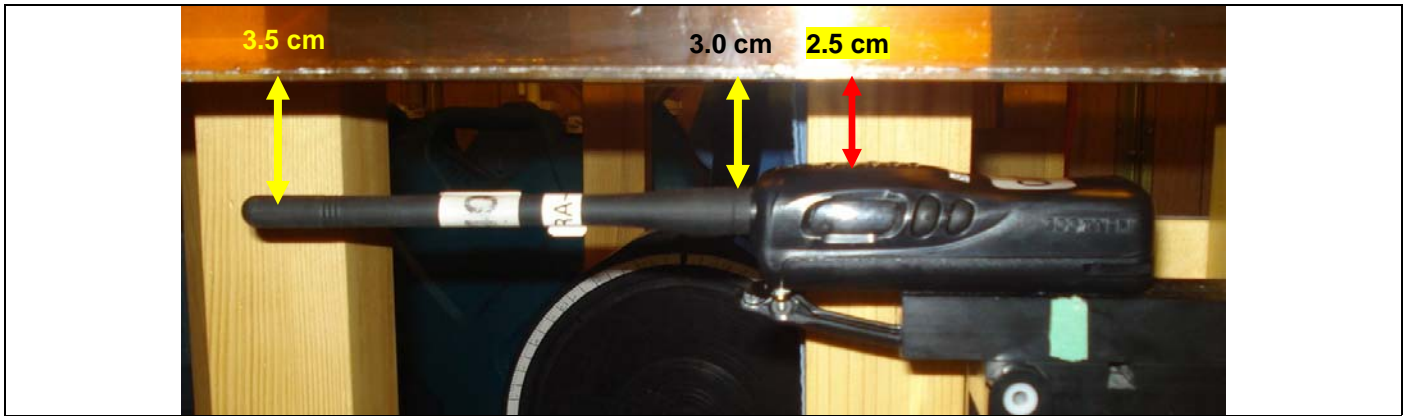


Face-held SAR Configuration - Antenna 8, Battery a

Applicant:	Kenwood USA Corporation	FCC ID:	ALH434901	Freq:	150.8 - 173.4 MHz	<b>KENWOOD</b>
DUT Type:	Portable FM VHF PTT Radio Transceiver	Model(s):	TK-2400-K	TK-2400-K2		
2012 Celltech Labs Inc.		This document is not to be reproduced in whole or in part without the prior written permission of Celltech Labs Inc.				Page 82 of 114

	<u>Date(s) of Evaluation</u> Aug 23-28, Oct3, 2012	<u>Test Report Serial No.</u> 081612ALH-T1189-S90V	<u>Test Report Revision No.</u> Rev. 1.0 (1st Release)	 Test Lab Certificate No. 2470.01
	<u>Test Report Issue Date</u> Oct. 17, 2012	<u>Description of Test(s)</u> Specific Absorption Rate	<u>RF Exposure Category</u> Occupational (Controlled)	

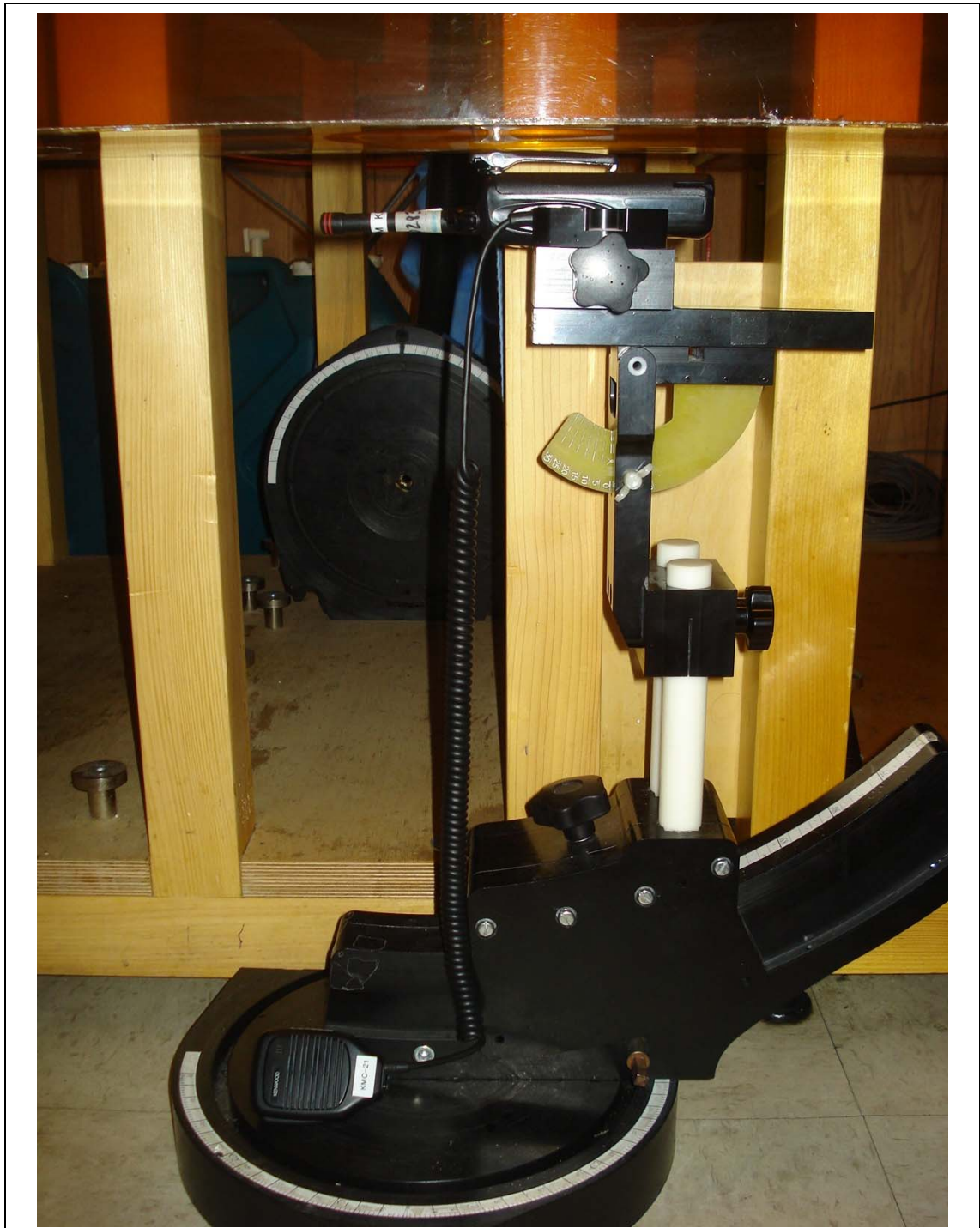
**FACE-HELD SAR TEST SETUP PHOTOGRAPHS**



**Face-held SAR Configuration - Antenna 5, Battery b**

<b>Applicant:</b>	Kenwood USA Corporation	<b>FCC ID:</b>	ALH434901	<b>Freq:</b>	150.8 - 173.4 MHz	<b>KENWOOD</b>
<b>DUT Type:</b>	Portable FM VHF PTT Radio Transceiver	<b>Model(s):</b>	TK-2400-K		TK-2400-K2	
2012 Celltech Labs Inc.		This document is not to be reproduced in whole or in part without the prior written permission of Celltech Labs Inc.				Page 83 of 114

**BODY-WORN SAR TEST SETUP PHOTOGRAPHS (WITH DEFAULT AUDIO ACC.)**

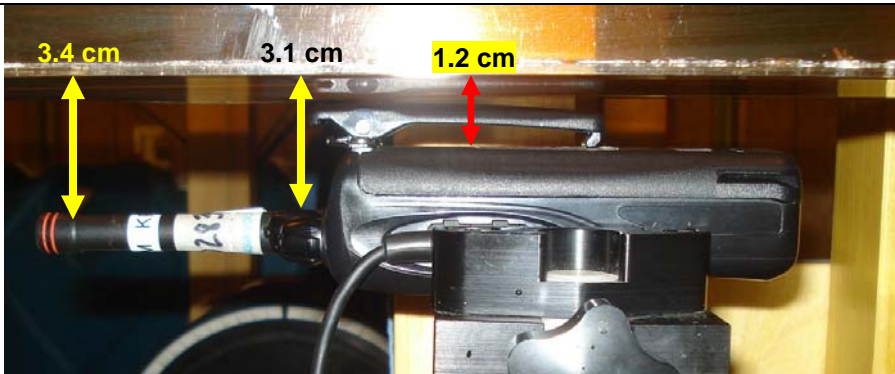


Body-worn SAR Configuration Test Setup

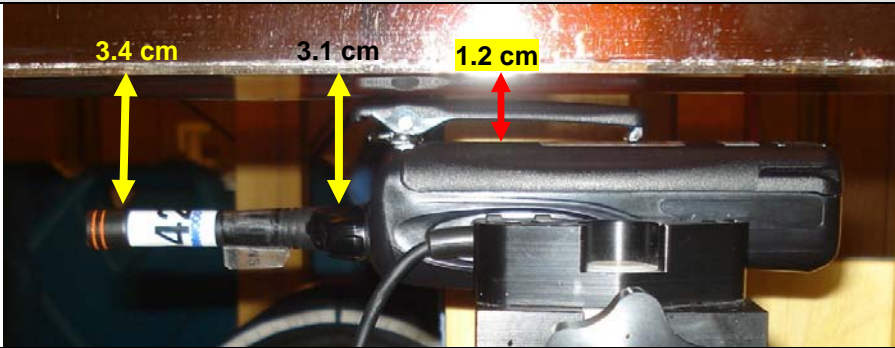
<b>Applicant:</b>	Kenwood USA Corporation	<b>FCC ID:</b>	ALH434901	<b>Freq:</b>	150.8 - 173.4 MHz	<b>KENWOOD</b>
<b>DUT Type:</b>	Portable FM VHF PTT Radio Transceiver	<b>Model(s):</b>	TK-2400-K		TK-2400-K2	
2012 Celltech Labs Inc.		This document is not to be reproduced in whole or in part without the prior written permission of Celltech Labs Inc.				Page 84 of 114



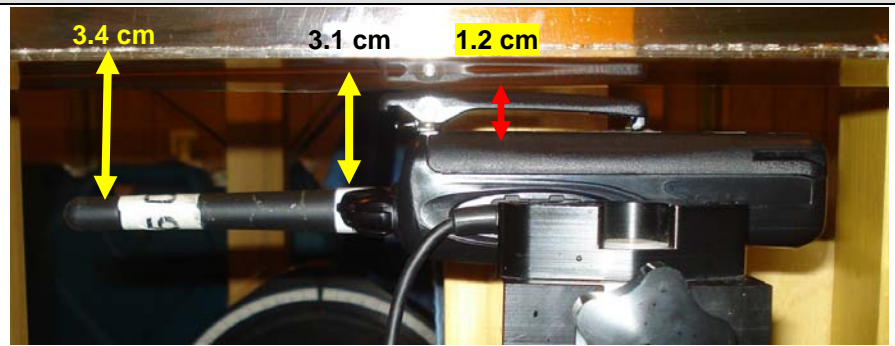
**BODY-WORN SAR TEST SETUP PHOTOGRAPHS (WITH DEFAULT AUDIO ACC.)**



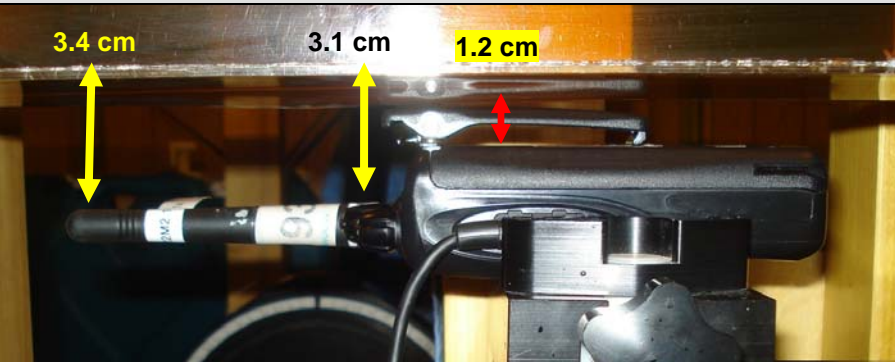
Body-worn SAR Configuration - Antenna 1, Battery a, Audio G1a



Body-worn SAR Configuration - Antenna 2, Battery a, Audio G1a



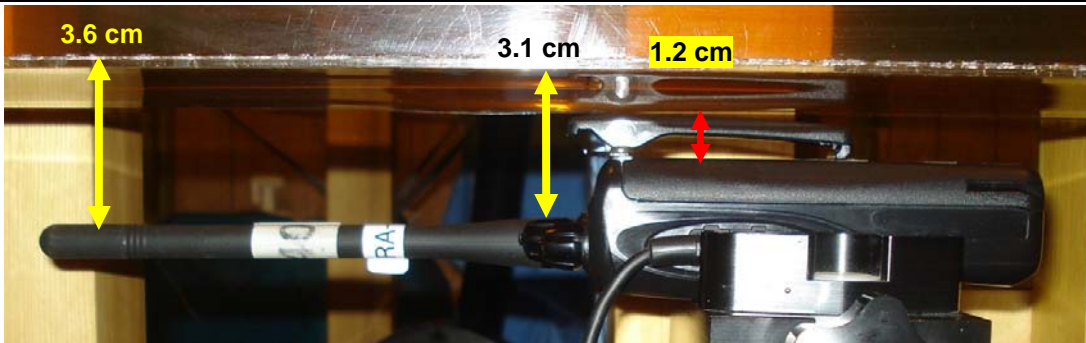
Body-worn SAR Configuration - Antenna 3, Battery a, Audio G1a



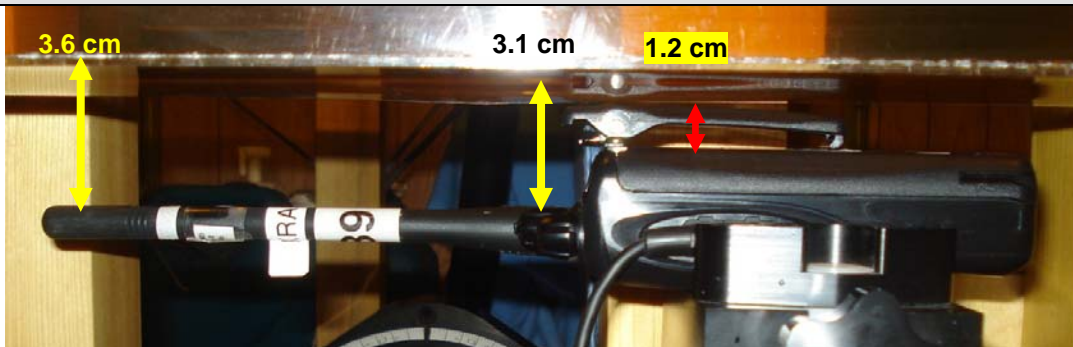
Body-worn SAR Configuration - Antenna 4, Battery a, Audio G1a

Applicant:	Kenwood USA Corporation	FCC ID:	ALH434901	Freq:	150.8 - 173.4 MHz	KENWOOD
DUT Type:	Portable FM VHF PTT Radio Transceiver	Model(s):	TK-2400-K	TK-2400-K2		
2012 Celltech Labs Inc.		This document is not to be reproduced in whole or in part without the prior written permission of Celltech Labs Inc.				Page 85 of 114

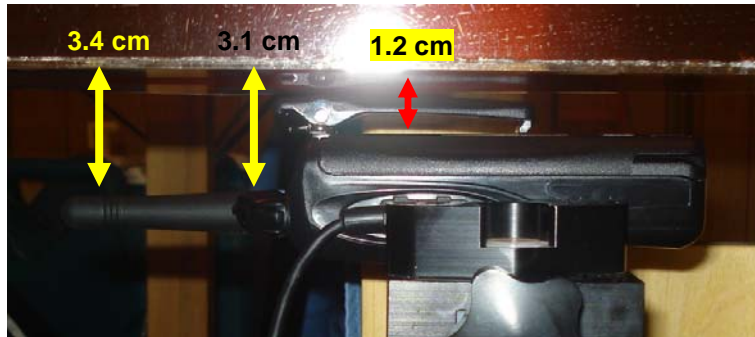
**BODY-WORN SAR TEST SETUP PHOTOGRAPHS (WITH DEFAULT AUDIO ACC.)**



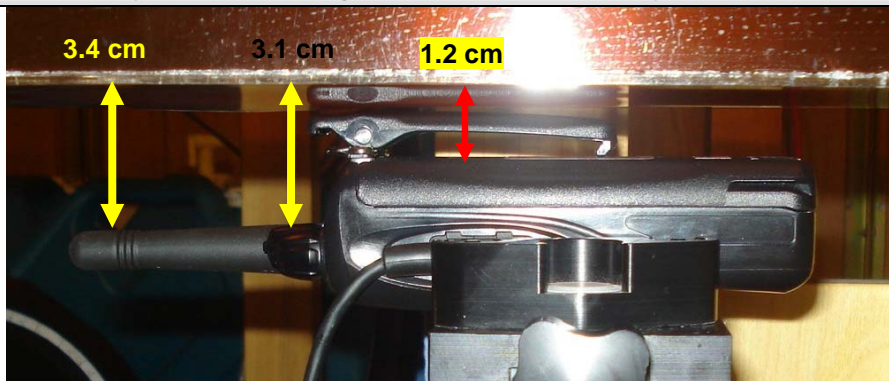
Body-worn SAR Configuration - Antenna 5, Battery a, Audio G1a



Body-worn SAR Configuration - Antenna 6, Battery a, Audio G1a





Body-worn SAR Configuration - Antenna 7, Battery a, Audio G1a



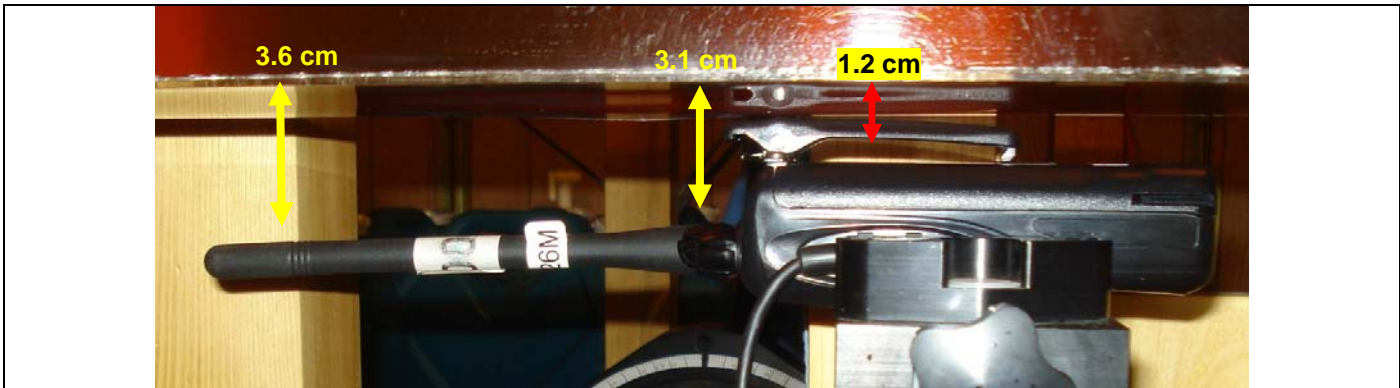
Body-worn SAR Configuration - Antenna 8, Battery a, Audio G1a

Applicant:	Kenwood USA Corporation	FCC ID:	ALH434901	Freq:	150.8 - 173.4 MHz	KENWOOD
DUT Type:	Portable FM VHF PTT Radio Transceiver	Model(s):	TK-2400-K	TK-2400-K2		
2012 Celltech Labs Inc.		This document is not to be reproduced in whole or in part without the prior written permission of Celltech Labs Inc.				Page 86 of 114



	<u>Date(s) of Evaluation</u> Aug 23-28, Oct3, 2012	<u>Test Report Serial No.</u> 081612ALH-T1189-S90V	<u>Test Report Revision No.</u> Rev. 1.0 (1st Release)	 Test Lab Certificate No. 2470.01
	<u>Test Report Issue Date</u> Oct. 17, 2012	<u>Description of Test(s)</u> Specific Absorption Rate	<u>RF Exposure Category</u> Occupational (Controlled)	

**BODY-WORN SAR TEST SETUP PHOTOGRAPHS (WITH DEFAULT AUDIO ACC.)**



**Body-worn SAR Configuration - Antenna 5, Battery b, Audio G1a**

<b>Applicant:</b>	Kenwood USA Corporation	<b>FCC ID:</b>	ALH434901	<b>Freq:</b>	150.8 - 173.4 MHz	<b>KENWOOD</b>
<b>DUT Type:</b>	Portable FM VHF PTT Radio Transceiver	<b>Model(s):</b>	TK-2400-K		TK-2400-K2	
2012 Celltech Labs Inc.		This document is not to be reproduced in whole or in part without the prior written permission of Celltech Labs Inc.				Page 87 of 114

**BODY-WORN SAR TEST SETUP PHOTOGRAPHS (w/ DEF. AUDIO ACC. PER CAT.)**



**Body-worn SAR Configuration - Antenna 7, Battery a, Audio G2e**

<b>Applicant:</b>	Kenwood USA Corporation	<b>FCC ID:</b>	ALH434901	<b>Freq:</b>	150.8 - 173.4 MHz	<b>KENWOOD</b>
<b>DUT Type:</b>	Portable FM VHF PTT Radio Transceiver	<b>Model(s):</b>	TK-2400-K		TK-2400-K2	
2012 Celltech Labs Inc.		This document is not to be reproduced in whole or in part without the prior written permission of Celltech Labs Inc.				Page 88 of 114

**BODY-WORN SAR TEST SETUP PHOTOGRAPHS (w/ DEF. AUDIO ACC. PER CAT.)**



**Body-worn SAR Configuration - Antenna 7, Battery a, Audio G3a**

<b>Applicant:</b>	Kenwood USA Corporation	<b>FCC ID:</b>	ALH434901	<b>Freq:</b>	150.8 - 173.4 MHz	<b>KENWOOD</b>
<b>DUT Type:</b>	Portable FM VHF PTT Radio Transceiver	<b>Model(s):</b>	TK-2400-K		TK-2400-K2	
2012 Celltech Labs Inc.		This document is not to be reproduced in whole or in part without the prior written permission of Celltech Labs Inc.				Page 89 of 114



**BODY-WORN SAR TEST SETUP PHOTOGRAPHS (w/ DEF. AUDIO ACC. PER CAT.)**



**Body-worn SAR Configuration - Antenna 7, Battery a, Audio G4b**

<b>Applicant:</b>	Kenwood USA Corporation	<b>FCC ID:</b>	ALH434901	<b>Freq:</b>	150.8 - 173.4 MHz	<b>KENWOOD</b>
<b>DUT Type:</b>	Portable FM VHF PTT Radio Transceiver	<b>Model(s):</b>	TK-2400-K		TK-2400-K2	
2012 Celltech Labs Inc.		This document is not to be reproduced in whole or in part without the prior written permission of Celltech Labs Inc.				Page 90 of 114

**BODY-WORN SAR TEST SETUP PHOTOGRAPHS (w/ ADD. AUDIO ACC. PER CAT.)**



**Body-worn SAR Configuration - Antenna 7, Battery a, Audio G5b**

<b>Applicant:</b>	Kenwood USA Corporation	<b>FCC ID:</b>	ALH434901	<b>Freq:</b>	150.8 - 173.4 MHz	<b>KENWOOD</b>
<b>DUT Type:</b>	Portable FM VHF PTT Radio Transceiver	<b>Model(s):</b>	TK-2400-K		TK-2400-K2	
2012 Celltech Labs Inc.		This document is not to be reproduced in whole or in part without the prior written permission of Celltech Labs Inc.				Page 91 of 114



## DUT PHOTOGRAPHS



**Radio Front**



**Radio Left Side**



**Radio Back**



**Radio Right Side**



**Radio Top**



**Radio Bottom**

<b>Applicant:</b>	Kenwood USA Corporation	<b>FCC ID:</b>	ALH434901	<b>Freq:</b>	150.8 - 173.4 MHz	<b>KENWOOD</b>
<b>DUT Type:</b>	Portable FM VHF PTT Radio Transceiver	<b>Model(s):</b>	TK-2400-K		TK-2400-K2	
2012 Celltech Labs Inc.		This document is not to be reproduced in whole or in part without the prior written permission of Celltech Labs Inc.				Page 92 of 114



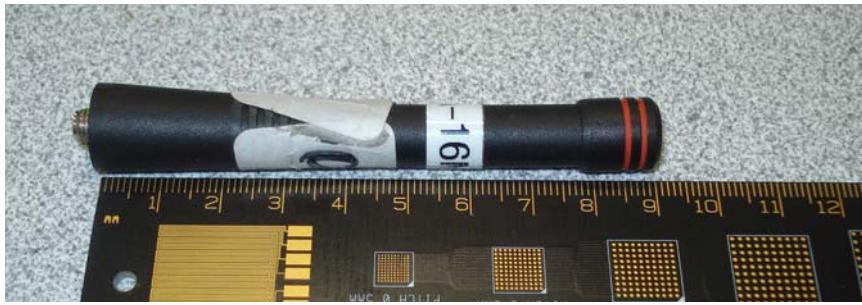


Back of Radio without battery

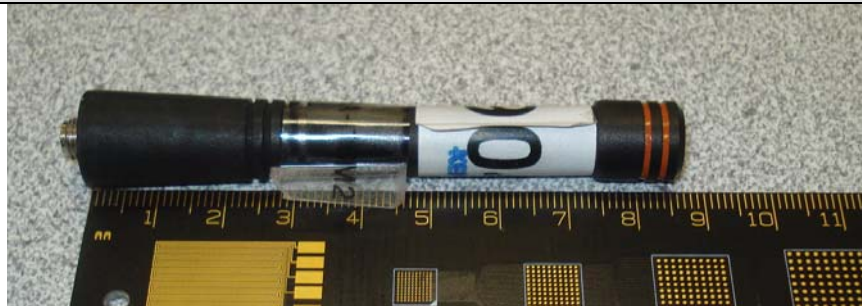


Belt-Clip Accessory

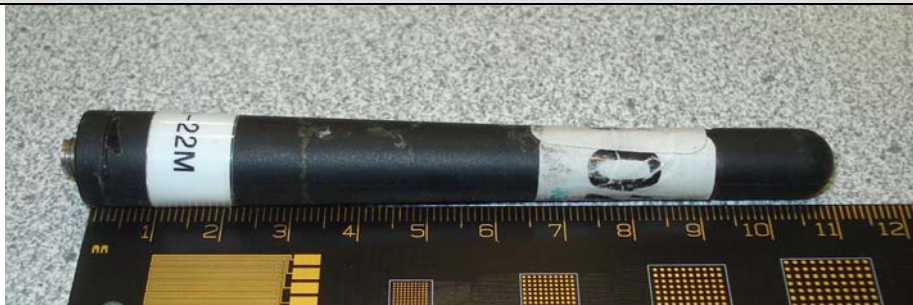
<b>Applicant:</b>	Kenwood USA Corporation	<b>FCC ID:</b>	ALH434901	<b>Freq:</b>	150.8 - 173.4 MHz	<b>KENWOOD</b>
<b>DUT Type:</b>	Portable FM VHF PTT Radio Transceiver	<b>Model(s):</b>	TK-2400-K	TK-2400-K2		
2012 Celltech Labs Inc.		This document is not to be reproduced in whole or in part without the prior written permission of Celltech Labs Inc.				Page 93 of 114



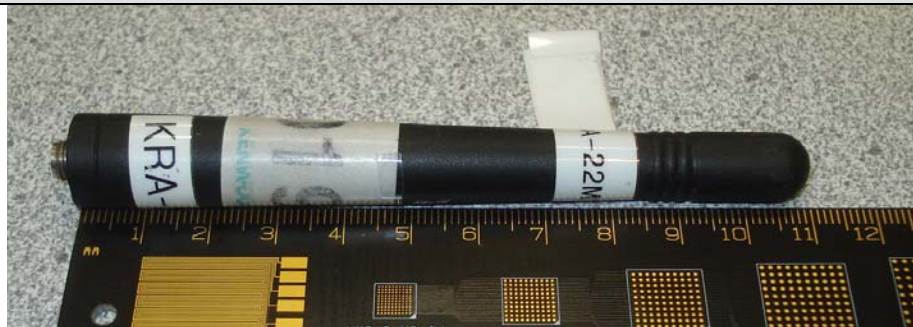
**Antenna 1**



**Antenna 2**



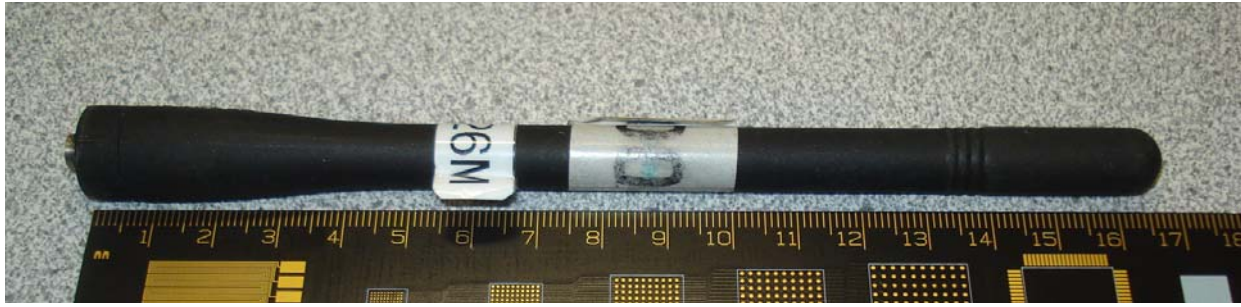
**Antenna 3**



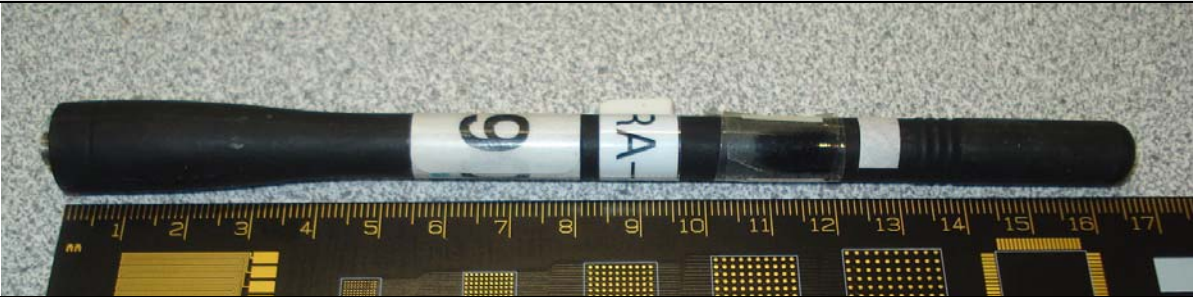
**Antenna 4**

<b>Applicant:</b>	Kenwood USA Corporation	<b>FCC ID:</b>	ALH434901	<b>Freq:</b>	150.8 - 173.4 MHz	<b>KENWOOD</b>
<b>DUT Type:</b>	Portable FM VHF PTT Radio Transceiver	<b>Model(s):</b>	TK-2400-K	TK-2400-K2		
2012 Celltech Labs Inc.		This document is not to be reproduced in whole or in part without the prior written permission of Celltech Labs Inc.				Page 94 of 114





**Antenna 5**



**Antenna 6**





**Antenna 7**



**Antenna 8**

<b>Applicant:</b>	Kenwood USA Corporation	<b>FCC ID:</b>	ALH434901	<b>Freq:</b>	150.8 - 173.4 MHz	<b>KENWOOD</b>
<b>DUT Type:</b>	Portable FM VHF PTT Radio Transceiver	<b>Model(s):</b>	TK-2400-K		TK-2400-K2	
2012 Celltech Labs Inc.		This document is not to be reproduced in whole or in part without the prior written permission of Celltech Labs Inc.				Page 95 of 114



	<u>Date(s) of Evaluation</u> Aug 23-28, Oct3, 2012	<u>Test Report Serial No.</u> 081612ALH-T1189-S90V	<u>Test Report Revision No.</u> Rev. 1.0 (1st Release)	 Test Lab Certificate No. 2470.01
	<u>Test Report Issue Date</u> Oct. 17, 2012	<u>Description of Test(s)</u> Specific Absorption Rate	<u>RF Exposure Category</u> Occupational (Controlled)	

**DUT PHOTOGRAPHS**



Li-ion "Battery a" - Front



Li-Ion "Battery a" - Back





NiMH "Battery b" - Front



NiMH "Battery b" - Back

<b>Applicant:</b>	Kenwood USA Corporation	<b>FCC ID:</b>	ALH434901	<b>Freq:</b>	150.8 - 173.4 MHz	<b>KENWOOD</b>
<b>DUT Type:</b>	Portable FM VHF PTT Radio Transceiver	<b>Model(s):</b>	TK-2400-K		TK-2400-K2	
2012 Celltech Labs Inc.		This document is not to be reproduced in whole or in part without the prior written permission of Celltech Labs Inc.				Page 96 of 114

	<u>Date(s) of Evaluation</u> Aug 23-28, Oct3, 2012	<u>Test Report Serial No.</u> 081612ALH-T1189-S90V	<u>Test Report Revision No.</u> Rev. 1.0 (1st Release)	 Test Lab Certificate No. 2470.01
	<u>Test Report Issue Date</u> Oct. 17, 2012	<u>Description of Test(s)</u> Specific Absorption Rate	<u>RF Exposure Category</u> Occupational (Controlled)	



**DUT PHOTOGRAPHS**

**SPEAKER-MICROPHONE AUDIO ACCESSORY GROUP #1 (DEAFULT ACCESSORY)**



**Slim-Line Speaker-Microphone (P/N: KMC-21)**

<b>Applicant:</b>	Kenwood USA Corporation	<b>FCC ID:</b>	ALH434901	<b>Freq:</b>	150.8 - 173.4 MHz	<b>KENWOOD</b>
<b>DUT Type:</b>	Portable FM VHF PTT Radio Transceiver	<b>Model(s):</b>	TK-2400-K		TK-2400-K2	
2012 Celltech Labs Inc.		This document is not to be reproduced in whole or in part without the prior written permission of Celltech Labs Inc.				Page 97 of 114

	<u>Date(s) of Evaluation</u> Aug 23-28, Oct3, 2012	<u>Test Report Serial No.</u> 081612ALH-T1189-S90V	<u>Test Report Revision No.</u> Rev. 1.0 (1st Release)	 Test Lab Certificate No. 2470.01
	<u>Test Report Issue Date</u> Oct. 17, 2012	<u>Description of Test(s)</u> Specific Absorption Rate	<u>RF Exposure Category</u> Occupational (Controlled)	

**DUT PHOTOGRAPHS**



**SPEAKER-MICROPHONE AUDIO ACCESSORY GROUP #1 (NOT TESTED)**



**Heavy Duty Speaker-Microphone (P/N: KMC-45)**

<b>Applicant:</b>	Kenwood USA Corporation	<b>FCC ID:</b>	ALH434901	<b>Freq:</b>	150.8 - 173.4 MHz	<b>KENWOOD</b>
<b>DUT Type:</b>	Portable FM VHF PTT Radio Transceiver	<b>Model(s):</b>	TK-2400-K		TK-2400-K2	
2012 Celltech Labs Inc.		This document is not to be reproduced in whole or in part without the prior written permission of Celltech Labs Inc.				Page 98 of 114



	<u>Date(s) of Evaluation</u> Aug 23-28, Oct3, 2012	<u>Test Report Serial No.</u> 081612ALH-T1189-S90V	<u>Test Report Revision No.</u> Rev. 1.0 (1st Release)	 Test Lab Certificate No. 2470.01
	<u>Test Report Issue Date</u> Oct. 17, 2012	<u>Description of Test(s)</u> Specific Absorption Rate	<u>RF Exposure Category</u> Occupational (Controlled)	



**DUT PHOTOGRAPHS**

**SPEAKER-MICROPHONE AUDIO ACCESSORY GROUP #1 (NOT TESTED)**



**Speaker Microphone w/ Integral GPS Unit (P/N: KMC-48GPS)**

<b>Applicant:</b>	Kenwood USA Corporation	<b>FCC ID:</b>	ALH434901	<b>Freq:</b>	150.8 - 173.4 MHz	<b>KENWOOD</b>
<b>DUT Type:</b>	Portable FM VHF PTT Radio Transceiver	<b>Model(s):</b>	TK-2400-K		TK-2400-K2	
2012 Celltech Labs Inc.		This document is not to be reproduced in whole or in part without the prior written permission of Celltech Labs Inc.				Page 99 of 114

	<u>Date(s) of Evaluation</u> Aug 23-28, Oct3, 2012	<u>Test Report Serial No.</u> 081612ALH-T1189-S90V	<u>Test Report Revision No.</u> Rev. 1.0 (1st Release)	 Test Lab Certificate No. 2470.01
	<u>Test Report Issue Date</u> Oct. 17, 2012	<u>Description of Test(s)</u> Specific Absorption Rate	<u>RF Exposure Category</u> Occupational (Controlled)	



**DUT PHOTOGRAPHS**

**LIGHTWEIGHT HEADSET AUDIO ACCESSORY GROUP #2 (NOT TESTED)**



**Lightweight Headset – No VOX or PTT Controls (P/N: KHS-21)**

<b>Applicant:</b>	Kenwood USA Corporation	<b>FCC ID:</b>	ALH434901	<b>Freq:</b>	150.8 - 173.4 MHz	<b>KENWOOD</b>
<b>DUT Type:</b>	Portable FM VHF PTT Radio Transceiver	<b>Model(s):</b>	TK-2400-K		TK-2400-K2	
2012 Celltech Labs Inc.		This document is not to be reproduced in whole or in part without the prior written permission of Celltech Labs Inc.				Page 100 of 114

	<u>Date(s) of Evaluation</u> Aug 23-28, Oct3, 2012	<u>Test Report Serial No.</u> 081612ALH-T1189-S90V	<u>Test Report Revision No.</u> Rev. 1.0 (1st Release)	
	<u>Test Report Issue Date</u> Oct. 17, 2012	<u>Description of Test(s)</u> Specific Absorption Rate	<u>RF Exposure Category</u> Occupational (Controlled)	

**DUT PHOTOGRAPHS**



**LIGHTWEIGHT HEADSET AUDIO ACCESSORY GROUP #2 (TESTED)**



**Behind-the-Head Headset w/ Boom Mic & PTT (P/N: KHS-22)**

<b>Applicant:</b>	Kenwood USA Corporation	<b>FCC ID:</b>	ALH434901	<b>Freq:</b>	150.8 - 173.4 MHz	<b>KENWOOD</b>
<b>DUT Type:</b>	Portable FM VHF PTT Radio Transceiver	<b>Model(s):</b>	TK-2400-K		TK-2400-K2	
2012 Celltech Labs Inc.		This document is not to be reproduced in whole or in part without the prior written permission of Celltech Labs Inc.				Page 101 of 114



	<u>Date(s) of Evaluation</u> Aug 23-28, Oct3, 2012	<u>Test Report Serial No.</u> 081612ALH-T1189-S90V	<u>Test Report Revision No.</u> Rev. 1.0 (1st Release)	
	<u>Test Report Issue Date</u> Oct. 17, 2012	<u>Description of Test(s)</u> Specific Absorption Rate	<u>RF Exposure Category</u> Occupational (Controlled)	



**DUT PHOTOGRAPHS**

**LIGHTWEIGHT HEADSET AUDIO ACCESSORY GROUP #2 (NOT TESTED)**



**Single Muff Headset (P/N: KHS-7)**

<b>Applicant:</b>	Kenwood USA Corporation	<b>FCC ID:</b>	ALH434901	<b>Freq:</b>	150.8 - 173.4 MHz	<b>KENWOOD</b>
<b>DUT Type:</b>	Portable FM VHF PTT Radio Transceiver	<b>Model(s):</b>	TK-2400-K		TK-2400-K2	
2012 Celltech Labs Inc.		This document is not to be reproduced in whole or in part without the prior written permission of Celltech Labs Inc.				Page 102 of 114

	<u>Date(s) of Evaluation</u> Aug 23-28, Oct3, 2012	<u>Test Report Serial No.</u> 081612ALH-T1189-S90V	<u>Test Report Revision No.</u> Rev. 1.0 (1st Release)	 Test Lab Certificate No. 2470.01
	<u>Test Report Issue Date</u> Oct. 17, 2012	<u>Description of Test(s)</u> Specific Absorption Rate	<u>RF Exposure Category</u> Occupational (Controlled)	



**DUT PHOTOGRAPHS**

**LIGHTWEIGHT HEADSET AUDIO ACCESSORY GROUP #2 (NOT TESTED)**



**Single Muff Headset w/ Boom Mic & PTT (P/N: KHS-7A)**

<b>Applicant:</b>	Kenwood USA Corporation	<b>FCC ID:</b>	ALH434901	<b>Freq:</b>	150.8 - 173.4 MHz	<b>KENWOOD</b>
<b>DUT Type:</b>	Portable FM VHF PTT Radio Transceiver	<b>Model(s):</b>	TK-2400-K		TK-2400-K2	
2012 Celltech Labs Inc.		This document is not to be reproduced in whole or in part without the prior written permission of Celltech Labs Inc.				Page 103 of 114

	<u>Date(s) of Evaluation</u> Aug 23-28, Oct3, 2012	<u>Test Report Serial No.</u> 081612ALH-T1189-S90V	<u>Test Report Revision No.</u> Rev. 1.0 (1st Release)	 Test Lab Certificate No. 2470.01
	<u>Test Report Issue Date</u> Oct. 17, 2012	<u>Description of Test(s)</u> Specific Absorption Rate	<u>RF Exposure Category</u> Occupational (Controlled)	

**DUT PHOTOGRAPHS**



**HEAVY-DUTY HEADSET AUDIO ACCESSORY GROUP #3 (TESTED)**



**Noise Reduction Headset (Behind-the-Head) (P/N: KHS-10BH)**

<b>Applicant:</b>	Kenwood USA Corporation	<b>FCC ID:</b>	ALH434901	<b>Freq:</b>	150.8 - 173.4 MHz	<b>KENWOOD</b>
<b>DUT Type:</b>	Portable FM VHF PTT Radio Transceiver	<b>Model(s):</b>	TK-2400-K		TK-2400-K2	
2012 Celltech Labs Inc.		This document is not to be reproduced in whole or in part without the prior written permission of Celltech Labs Inc.				Page 104 of 114



	<u>Date(s) of Evaluation</u> Aug 23-28, Oct3, 2012	<u>Test Report Serial No.</u> 081612ALH-T1189-S90V	<u>Test Report Revision No.</u> Rev. 1.0 (1st Release)	 Test Lab Certificate No. 2470.01
	<u>Test Report Issue Date</u> Oct. 17, 2012	<u>Description of Test(s)</u> Specific Absorption Rate	<u>RF Exposure Category</u> Occupational (Controlled)	



**DUT PHOTOGRAPHS**

**HEAVY-DUTY HEADSET AUDIO ACCESSORY GROUP #3 (NOT TESTED)**



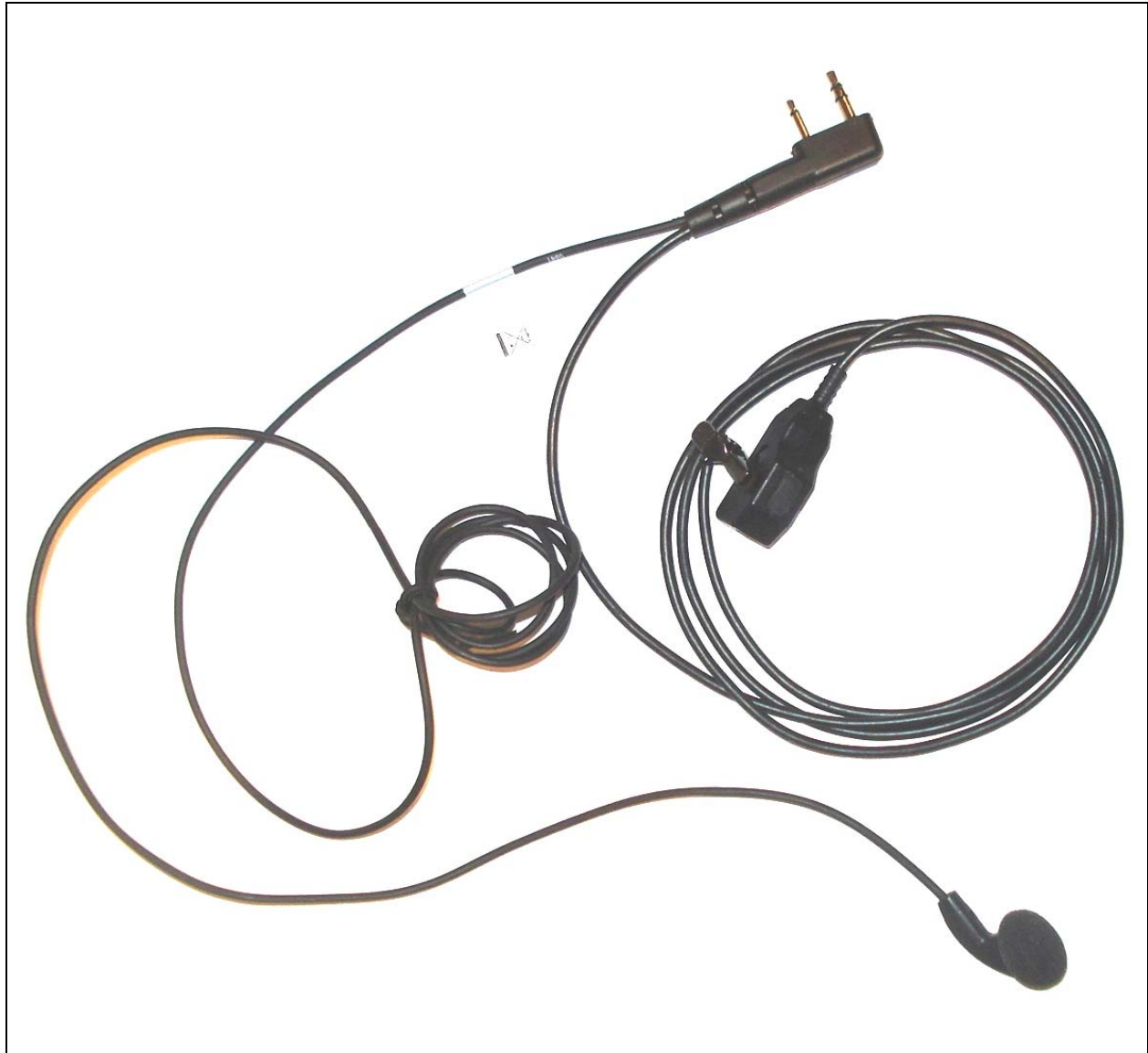
**Noise Reduction Headset (Over-the-Head) (P/N: KHS-100H)**

<b>Applicant:</b>	Kenwood USA Corporation	<b>FCC ID:</b>	ALH434901	<b>Freq:</b>	150.8 - 173.4 MHz	<b>KENWOOD</b>
<b>DUT Type:</b>	Portable FM VHF PTT Radio Transceiver	<b>Model(s):</b>	TK-2400-K		TK-2400-K2	
2012 Celltech Labs Inc.		This document is not to be reproduced in whole or in part without the prior written permission of Celltech Labs Inc.				Page 105 of 114

	<u>Date(s) of Evaluation</u> Aug 23-28, Oct3, 2012	<u>Test Report Serial No.</u> 081612ALH-T1189-S90V	<u>Test Report Revision No.</u> Rev. 1.0 (1st Release)	
	<u>Test Report Issue Date</u> Oct. 17, 2012	<u>Description of Test(s)</u> Specific Absorption Rate	<u>RF Exposure Category</u> Occupational (Controlled)	



**DUT PHOTOGRAPHS**

**EARPIECE AUDIO ACCESSORY GROUP #4 (NOT TESTED)**



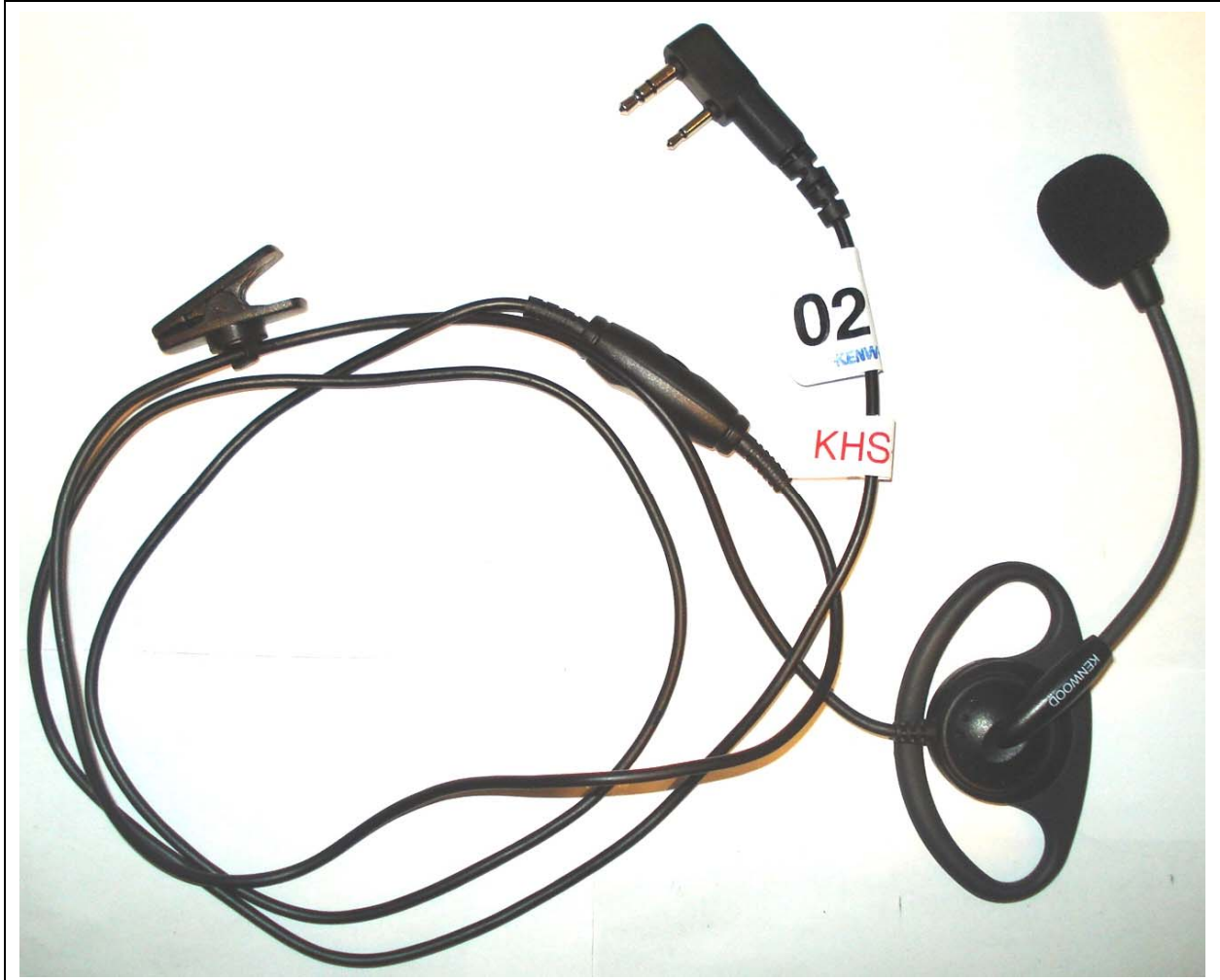
**2-Wire Earbud w/ Mic & PTT – VOX Ready (P/N: KHS-23)**

<b>Applicant:</b>	Kenwood USA Corporation	<b>FCC ID:</b>	ALH434901	<b>Freq:</b>	150.8 - 173.4 MHz	<b>KENWOOD</b>
<b>DUT Type:</b>	Portable FM VHF PTT Radio Transceiver	<b>Model(s):</b>	TK-2400-K		TK-2400-K2	
2012 Celltech Labs Inc.		This document is not to be reproduced in whole or in part without the prior written permission of Celltech Labs Inc.				Page 106 of 114

	<u>Date(s) of Evaluation</u> Aug 23-28, Oct3, 2012	<u>Test Report Serial No.</u> 081612ALH-T1189-S90V	<u>Test Report Revision No.</u> Rev. 1.0 (1st Release)	 Test Lab Certificate No. 2470.01
	<u>Test Report Issue Date</u> Oct. 17, 2012	<u>Description of Test(s)</u> Specific Absorption Rate	<u>RF Exposure Category</u> Occupational (Controlled)	

**DUT PHOTOGRAPHS**



**EARPIECE AUDIO ACCESSORY GROUP #4 (TESTED)**



**Earhook w/ Mini Boom Mic (P/N: KHS-25)**

<b>Applicant:</b>	Kenwood USA Corporation	<b>FCC ID:</b>	ALH434901	<b>Freq:</b>	150.8 - 173.4 MHz	<b>KENWOOD</b>
<b>DUT Type:</b>	Portable FM VHF PTT Radio Transceiver	<b>Model(s):</b>	TK-2400-K		TK-2400-K2	
2012 Celltech Labs Inc.		This document is not to be reproduced in whole or in part without the prior written permission of Celltech Labs Inc.				Page 107 of 114



	<u>Date(s) of Evaluation</u> Aug 23-28, Oct3, 2012	<u>Test Report Serial No.</u> 081612ALH-T1189-S90V	<u>Test Report Revision No.</u> Rev. 1.0 (1st Release)	 Test Lab Certificate No. 2470.01
	<u>Test Report Issue Date</u> Oct. 17, 2012	<u>Description of Test(s)</u> Specific Absorption Rate	<u>RF Exposure Category</u> Occupational (Controlled)	



**DUT PHOTOGRAPHS**

**EARPIECE AUDIO ACCESSORY GROUP #4 (NOT TESTED)**



**Clip Mic w/ Earphone (P/N: KHS-26)**

<b>Applicant:</b>	Kenwood USA Corporation	<b>FCC ID:</b>	ALH434901	<b>Freq:</b>	150.8 - 173.4 MHz	<b>KENWOOD</b>
<b>DUT Type:</b>	Portable FM VHF PTT Radio Transceiver	<b>Model(s):</b>	TK-2400-K		TK-2400-K2	
2012 Celltech Labs Inc.		This document is not to be reproduced in whole or in part without the prior written permission of Celltech Labs Inc.				Page 108 of 114

	<u>Date(s) of Evaluation</u> Aug 23-28, Oct3, 2012	<u>Test Report Serial No.</u> 081612ALH-T1189-S90V	<u>Test Report Revision No.</u> Rev. 1.0 (1st Release)	 Test Lab Certificate No. 2470.01
	<u>Test Report Issue Date</u> Oct. 17, 2012	<u>Description of Test(s)</u> Specific Absorption Rate	<u>RF Exposure Category</u> Occupational (Controlled)	



**DUT PHOTOGRAPHS**

**EARPIECE AUDIO ACCESSORY GROUP #4 (NOT TESTED)**



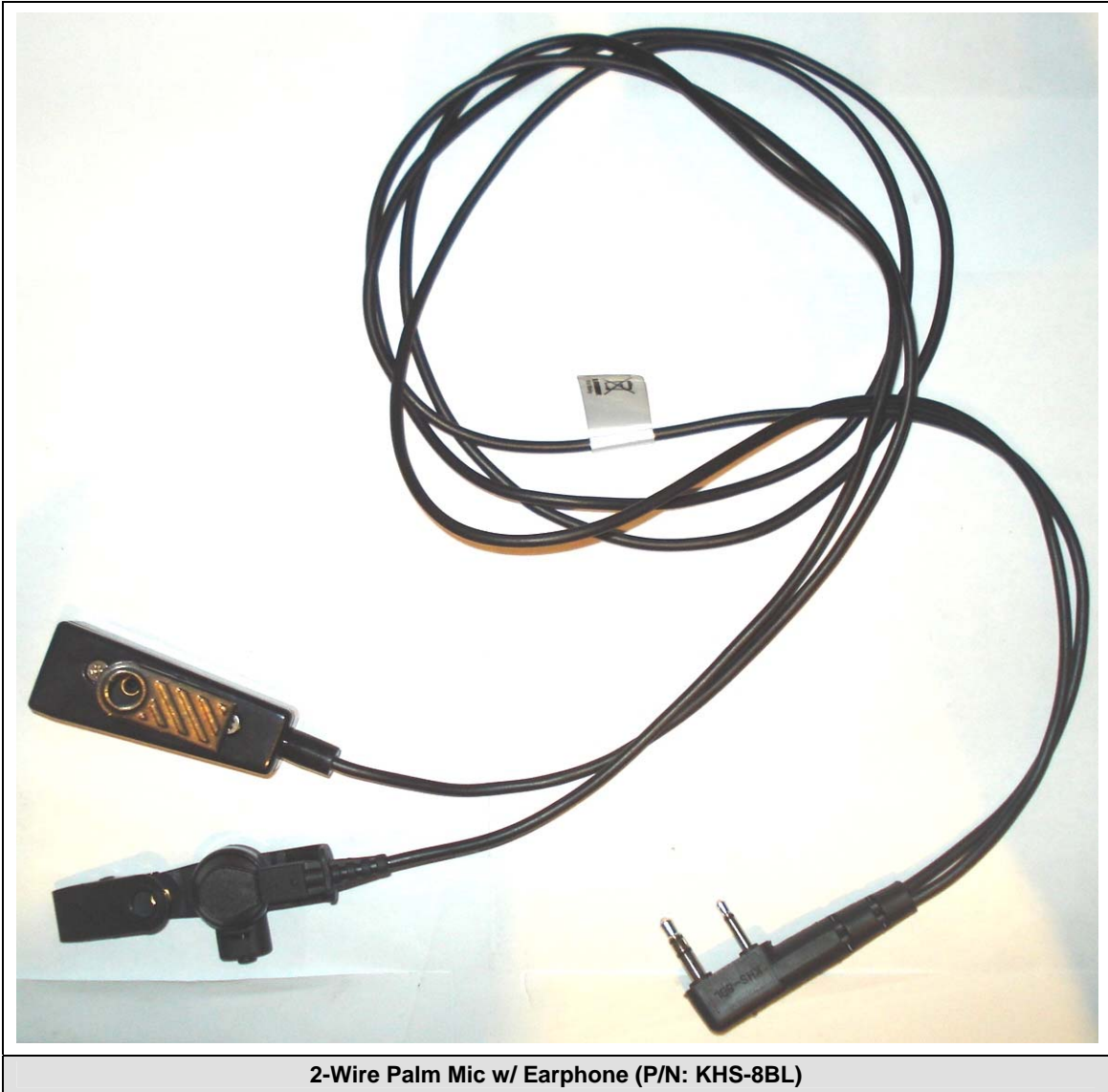
**D-Ring Ear Hanger w/ PTT & Mic (P/N: KHS-27)**

<b>Applicant:</b>	Kenwood USA Corporation	<b>FCC ID:</b>	ALH434901	<b>Freq:</b>	150.8 - 173.4 MHz	<b>KENWOOD</b>
<b>DUT Type:</b>	Portable FM VHF PTT Radio Transceiver	<b>Model(s):</b>	TK-2400-K		TK-2400-K2	
2012 Celltech Labs Inc.		This document is not to be reproduced in whole or in part without the prior written permission of Celltech Labs Inc.				Page 109 of 114

	<u>Date(s) of Evaluation</u> Aug 23-28, Oct3, 2012	<u>Test Report Serial No.</u> 081612ALH-T1189-S90V	<u>Test Report Revision No.</u> Rev. 1.0 (1st Release)	 Test Lab Certificate No. 2470.01
	<u>Test Report Issue Date</u> Oct. 17, 2012	<u>Description of Test(s)</u> Specific Absorption Rate	<u>RF Exposure Category</u> Occupational (Controlled)	



**DUT PHOTOGRAPHS**

**PALM-MICROPHONE KIT AUDIO ACCESSORY GROUP #5 (NOT TESTED)**



<b>Applicant:</b>	Kenwood USA Corporation	<b>FCC ID:</b>	ALH434901	<b>Freq:</b>	150.8 - 173.4 MHz	<b>KENWOOD</b>
<b>DUT Type:</b>	Portable FM VHF PTT Radio Transceiver	<b>Model(s):</b>	TK-2400-K		TK-2400-K2	
2012 Celltech Labs Inc.		This document is not to be reproduced in whole or in part without the prior written permission of Celltech Labs Inc.				Page 110 of 114



	<u>Date(s) of Evaluation</u> Aug 23-28, Oct3, 2012	<u>Test Report Serial No.</u> 081612ALH-T1189-S90V	<u>Test Report Revision No.</u> Rev. 1.0 (1st Release)	 Test Lab Certificate No. 2470.01
	<u>Test Report Issue Date</u> Oct. 17, 2012	<u>Description of Test(s)</u> Specific Absorption Rate	<u>RF Exposure Category</u> Occupational (Controlled)	

**DUT PHOTOGRAPHS**

**PALM-MICROPHONE KIT AUDIO ACCESSORY GROUP #5 (TESTED)**



**3-Wire Lapel Microphone w/ Earpiece (P/N: KHS-9BL)**

<b>Applicant:</b>	Kenwood USA Corporation	<b>FCC ID:</b>	ALH434901	<b>Freq:</b>	150.8 - 173.4 MHz	<b>KENWOOD</b>
<b>DUT Type:</b>	Portable FM VHF PTT Radio Transceiver	<b>Model(s):</b>	TK-2400-K		TK-2400-K2	
2012 Celltech Labs Inc.		This document is not to be reproduced in whole or in part without the prior written permission of Celltech Labs Inc.				Page 111 of 114