

	<u>Date(s) of Evaluation</u> Jan. 4,6,26-28,31, 2011	<u>Test Report Serial No.</u> 121510ALH-T1070-S90U	<u>Test Report Revision No.</u> Rev. 1.2 (3rd Release)	 Test Lab Certificate No. 2470.01
	<u>Test Report Issue Date</u> March 24, 2011	<u>Description of Test(s)</u> Specific Absorption Rate	<u>RF Exposure Category</u> Occupational (Controlled)	

BODY-WORN SAR TEST SETUP PHOTOGRAPHS (w/ ADD. AUDIO ACC. PER CAT.)



DUT with Belt-Clip Body-worn Accessory (P/N: KBH-12) & Add. Audio Accessory - Category #1 - Headset (Single Muff Headset w/ Boom-Mic P/N: KHS-7) (Battery Parallel to Planar Phantom)

Applicant:	Kenwood USA Corporation	FCC ID:	ALH431000	DUT Model:	NX-320-K3	KENWOOD
DUT Type:	Portable UHF-H PTT Radio Transceiver	Transmitter Frequency Range:		450.0 - 512.0 MHz		
2011 Celltech Labs Inc.		This document is not to be reproduced in whole or in part without the prior written permission of Celltech Labs Inc.				Page 207 of 253

	<u>Date(s) of Evaluation</u> Jan. 4,6,26-28,31, 2011	<u>Test Report Serial No.</u> 121510ALH-T1070-S90U	<u>Test Report Revision No.</u> Rev. 1.2 (3rd Release)	 Test Lab Certificate No. 2470.01
	<u>Test Report Issue Date</u> March 24, 2011	<u>Description of Test(s)</u> Specific Absorption Rate	<u>RF Exposure Category</u> Occupational (Controlled)	

BODY-WORN SAR TEST SETUP PHOTOGRAPHS (w/ ADD. AUDIO ACC. PER CAT.)



DUT with Belt-Clip Body-worn Accessory (P/N: KBH-12) & Add. Audio Accessory - Category #1 - Headset (Single Muff Headset w/ Boom-Mic & PTT P/N: KHS-7A) (Battery Parallel to Planar Phantom)

Applicant:	Kenwood USA Corporation	FCC ID:	ALH431000	DUT Model:	NX-320-K3	KENWOOD
DUT Type:	Portable UHF-H PTT Radio Transceiver	Transmitter Frequency Range:		450.0 - 512.0 MHz		
2011 Celltech Labs Inc.		This document is not to be reproduced in whole or in part without the prior written permission of Celltech Labs Inc.				Page 208 of 253

	<u>Date(s) of Evaluation</u> Jan. 4,6,26-28,31, 2011	<u>Test Report Serial No.</u> 121510ALH-T1070-S90U	<u>Test Report Revision No.</u> Rev. 1.2 (3rd Release)	 Test Lab Certificate No. 2470.01
	<u>Test Report Issue Date</u> March 24, 2011	<u>Description of Test(s)</u> Specific Absorption Rate	<u>RF Exposure Category</u> Occupational (Controlled)	

BODY-WORN SAR TEST SETUP PHOTOGRAPHS (w/ ADD. AUDIO ACC. PER CAT.)



DUT with Belt-Clip Body-worn Accessory (P/N: KBH-12) & Add. Audio Accessory - Category #2 - Earpiece (2-Wire Ear-Bud w/ mic/PTT - Vox Ready P/N: KHS-23) (Battery Parallel to Planar Phantom)

Applicant:	Kenwood USA Corporation	FCC ID:	ALH431000	DUT Model:	NX-320-K3	KENWOOD
DUT Type:	Portable UHF-H PTT Radio Transceiver	Transmitter Frequency Range:		450.0 - 512.0 MHz		
2011 Celltech Labs Inc.		This document is not to be reproduced in whole or in part without the prior written permission of Celltech Labs Inc.				Page 209 of 253

	<u>Date(s) of Evaluation</u> Jan. 4,6,26-28,31, 2011	<u>Test Report Serial No.</u> 121510ALH-T1070-S90U	<u>Test Report Revision No.</u> Rev. 1.2 (3rd Release)	 Test Lab Certificate No. 2470.01
	<u>Test Report Issue Date</u> March 24, 2011	<u>Description of Test(s)</u> Specific Absorption Rate	<u>RF Exposure Category</u> Occupational (Controlled)	

BODY-WORN SAR TEST SETUP PHOTOGRAPHS (w/ ADD. AUDIO ACC. PER CAT.)



DUT with Belt-Clip Body-worn Accessory (P/N: KBH-12) & Add. Audio Accessory - Category #2 - Earpiece (Earhook w/ Mini Boom-Mic P/N: KHS-25) (Battery Parallel to Planar Phantom)

Applicant:	Kenwood USA Corporation	FCC ID:	ALH431000	DUT Model:	NX-320-K3	KENWOOD
DUT Type:	Portable UHF-H PTT Radio Transceiver	Transmitter Frequency Range:		450.0 - 512.0 MHz		
2011 Celltech Labs Inc.		This document is not to be reproduced in whole or in part without the prior written permission of Celltech Labs Inc.				Page 210 of 253

	<u>Date(s) of Evaluation</u> Jan. 4,6,26-28,31, 2011	<u>Test Report Serial No.</u> 121510ALH-T1070-S90U	<u>Test Report Revision No.</u> Rev. 1.2 (3rd Release)	 Test Lab Certificate No. 2470.01
	<u>Test Report Issue Date</u> March 24, 2011	<u>Description of Test(s)</u> Specific Absorption Rate	<u>RF Exposure Category</u> Occupational (Controlled)	

BODY-WORN SAR TEST SETUP PHOTOGRAPHS (w/ ADD. AUDIO ACC. PER CAT.)



**DUT with Belt-Clip Body-worn Accessory (P/N: KBH-12) &
 Add. Audio Accessory - Category #2 - Earpiece (Clip Mic w/ Earphone P/N: KHS-26)
 (Battery Parallel to Planar Phantom)**

Applicant:	Kenwood USA Corporation	FCC ID:	ALH431000	DUT Model:	NX-320-K3	KENWOOD
DUT Type:	Portable UHF-H PTT Radio Transceiver	Transmitter Frequency Range:		450.0 - 512.0 MHz		
2011 Celltech Labs Inc.		This document is not to be reproduced in whole or in part without the prior written permission of Celltech Labs Inc.				Page 211 of 253

	<u>Date(s) of Evaluation</u> Jan. 4,6,26-28,31, 2011	<u>Test Report Serial No.</u> 121510ALH-T1070-S90U	<u>Test Report Revision No.</u> Rev. 1.2 (3rd Release)	 Test Lab Certificate No. 2470.01
	<u>Test Report Issue Date</u> March 24, 2011	<u>Description of Test(s)</u> Specific Absorption Rate	<u>RF Exposure Category</u> Occupational (Controlled)	

BODY-WORN SAR TEST SETUP PHOTOGRAPHS (w/ ADD. AUDIO ACC. PER CAT.)



DUT with Belt-Clip Body-worn Accessory (P/N: KBH-12) & Add. Audio Accessory - Category #3 - Palm-Mic Kit (2-Wire Palm-Mic w/ Earphone P/N: KHS-8BL) (Battery Parallel to Planar Phantom)

Applicant:	Kenwood USA Corporation	FCC ID:	ALH431000	DUT Model:	NX-320-K3	KENWOOD
DUT Type:	Portable UHF-H PTT Radio Transceiver	Transmitter Frequency Range:		450.0 - 512.0 MHz		
2011 Celltech Labs Inc.		This document is not to be reproduced in whole or in part without the prior written permission of Celltech Labs Inc.				Page 212 of 253

BODY-WORN SAR TEST SETUP PHOTOGRAPHS (w/ ADD. AUDIO ACC. PER CAT.)



DUT with Belt-Clip Body-worn Accessory (P/N: KBH-12) & Add. Audio Accessory - Category #4 - Speaker-Microphone (Slim-Line Speaker-Mic P/N: KMC-21) (Battery Parallel to Planar Phantom)

Applicant:	Kenwood USA Corporation	FCC ID:	ALH431000	DUT Model:	NX-320-K3	KENWOOD
DUT Type:	Portable UHF-H PTT Radio Transceiver	Transmitter Frequency Range:		450.0 - 512.0 MHz		
2011 Celltech Labs Inc.		This document is not to be reproduced in whole or in part without the prior written permission of Celltech Labs Inc.				Page 213 of 253

	<u>Date(s) of Evaluation</u> Jan. 4,6,26-28,31, 2011	<u>Test Report Serial No.</u> 121510ALH-T1070-S90U	<u>Test Report Revision No.</u> Rev. 1.2 (3rd Release)	 Test Lab Certificate No. 2470.01
	<u>Test Report Issue Date</u> March 24, 2011	<u>Description of Test(s)</u> Specific Absorption Rate	<u>RF Exposure Category</u> Occupational (Controlled)	

BODY-WORN SAR TEST SETUP PHOTOGRAPHS (w/ ADD. AUDIO ACC. PER CAT.)



DUT with Belt-Clip Body-worn Accessory (P/N: KBH-12) & Add. Audio Accessory - Category #4 - Speaker-Microphone (Heavy-Duty Speaker-Mic P/N: KMC-45) (Battery Parallel to Planar Phantom)

Applicant:	Kenwood USA Corporation	FCC ID:	ALH431000	DUT Model:	NX-320-K3	KENWOOD
DUT Type:	Portable UHF-H PTT Radio Transceiver	Transmitter Frequency Range:		450.0 - 512.0 MHz		
2011 Celltech Labs Inc.		This document is not to be reproduced in whole or in part without the prior written permission of Celltech Labs Inc.				Page 214 of 253

BODY-WORN SAR TEST SETUP PHOTOGRAPHS (w/ ADD. AUDIO ACC. PER CAT.)



DUT with Belt-Clip Body-worn Accessory (P/N: KBH-12) & Add. Audio Accessory - Category #4 - Speaker-Microphone (Heavy-Duty Speaker-Mic P/N: KMC-45 with Earphone Kit P/N: KEP-2) (Battery Parallel to Planar Phantom)

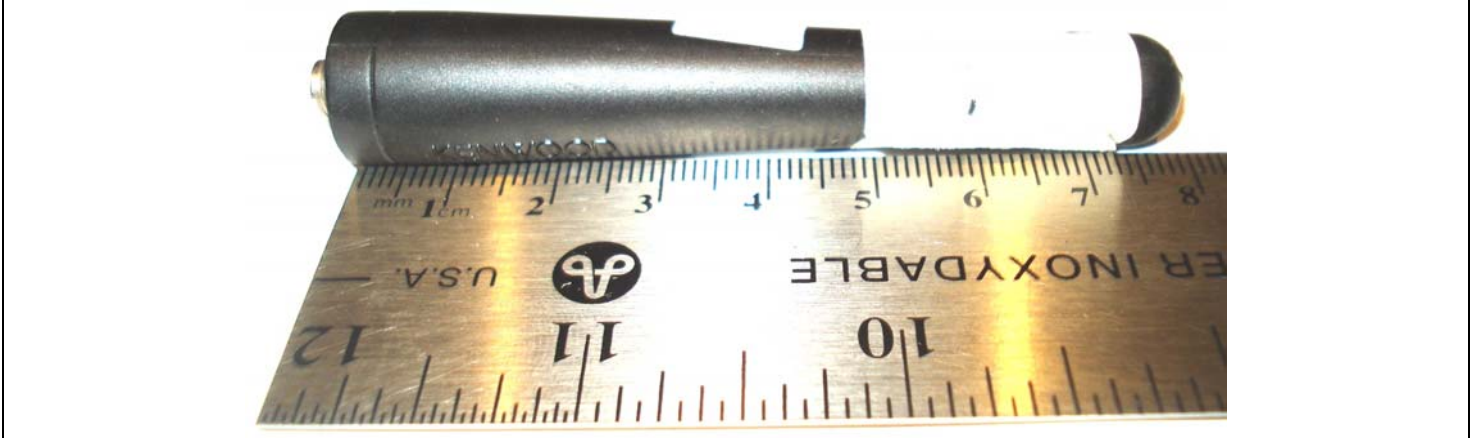
Applicant:	Kenwood USA Corporation	FCC ID:	ALH431000	DUT Model:	NX-320-K3	KENWOOD
DUT Type:	Portable UHF-H PTT Radio Transceiver	Transmitter Frequency Range:		450.0 - 512.0 MHz		
2011 Celltech Labs Inc.		This document is not to be reproduced in whole or in part without the prior written permission of Celltech Labs Inc.				Page 215 of 253

	<u>Date(s) of Evaluation</u> Jan. 4,6,26-28,31, 2011	<u>Test Report Serial No.</u> 121510ALH-T1070-S90U	<u>Test Report Revision No.</u> Rev. 1.2 (3rd Release)	 Test Lab Certificate No. 2470.01
	<u>Test Report Issue Date</u> March 24, 2011	<u>Description of Test(s)</u> Specific Absorption Rate	<u>RF Exposure Category</u> Occupational (Controlled)	

DUT PHOTOGRAPHS



Front of DUT with KRA-23M Antenna
Back of DUT with KRA-23M & Belt-Clip
Back of DUT with KRA-23M & Swivel Belt-Loop



Detachable Stub "Antenna A/B" P/N: KRA-23M/M2* (Length = 80 mm)

*Note: Antennas KRA-23M and KRA-23M2 are identical dimensions

Applicant:	Kenwood USA Corporation	FCC ID:	ALH431000	DUT Model:	NX-320-K3	KENWOOD
DUT Type:	Portable UHF-H PTT Radio Transceiver	Transmitter Frequency Range:		450.0 - 512.0 MHz		
2011 Celltech Labs Inc.		This document is not to be reproduced in whole or in part without the prior written permission of Celltech Labs Inc.				Page 216 of 253

	<u>Date(s) of Evaluation</u> Jan. 4,6,26-28,31, 2011	<u>Test Report Serial No.</u> 121510ALH-T1070-S90U	<u>Test Report Revision No.</u> Rev. 1.2 (3rd Release)	 Test Lab Certificate No. 2470.01
	<u>Test Report Issue Date</u> March 24, 2011	<u>Description of Test(s)</u> Specific Absorption Rate	<u>RF Exposure Category</u> Occupational (Controlled)	

DUT PHOTOGRAPHS



Front of DUT with KRA-27M Antenna



Back of DUT with KRA-27M & Belt-Clip

Back of DUT with KRA-27M & Swivel Belt-Loop



Detachable Whip "Antenna C" P/N: KRA-27M (Length = 149 mm)

Applicant:	Kenwood USA Corporation	FCC ID:	ALH431000	DUT Model:	NX-320-K3	KENWOOD
DUT Type:	Portable UHF-H PTT Radio Transceiver	Transmitter Frequency Range:		450.0 - 512.0 MHz		
2011 Celltech Labs Inc.		This document is not to be reproduced in whole or in part without the prior written permission of Celltech Labs Inc.				Page 217 of 253

	<u>Date(s) of Evaluation</u> Jan. 4,6,26-28,31, 2011	<u>Test Report Serial No.</u> 121510ALH-T1070-S90U	<u>Test Report Revision No.</u> Rev. 1.2 (3rd Release)	 Test Lab Certificate No. 2470.01
	<u>Test Report Issue Date</u> March 24, 2011	<u>Description of Test(s)</u> Specific Absorption Rate	<u>RF Exposure Category</u> Occupational (Controlled)	

DUT PHOTOGRAPHS



Front of DUT with KRA-27M2 Antenna

Back of DUT with KRA-27M2 & Belt-Clip

Back of DUT with KRA-27M2 & Swivel Belt-Loop



Detachable Whip "Antenna D" P/N: KRA-27M2 (Length = 139 mm)

Applicant:	Kenwood USA Corporation	FCC ID:	ALH431000	DUT Model:	NX-320-K3	KENWOOD
DUT Type:	Portable UHF-H PTT Radio Transceiver	Transmitter Frequency Range:		450.0 - 512.0 MHz		
2011 Celltech Labs Inc.		This document is not to be reproduced in whole or in part without the prior written permission of Celltech Labs Inc.				Page 218 of 253

	<u>Date(s) of Evaluation</u> Jan. 4,6,26-28,31, 2011	<u>Test Report Serial No.</u> 121510ALH-T1070-S90U	<u>Test Report Revision No.</u> Rev. 1.2 (3rd Release)	 Test Lab Certificate No. 2470.01
	<u>Test Report Issue Date</u> March 24, 2011	<u>Description of Test(s)</u> Specific Absorption Rate	<u>RF Exposure Category</u> Occupational (Controlled)	

DUT PHOTOGRAPHS



Left Side of DUT with KNB-57L Li-ion "Battery a" & Belt-Clip accessory



Right Side of DUT with KNB-57L Li-ion "Battery a" & Belt-Clip accessory



Bottom end of DUT with KNB-57L "Battery a" & Belt-Clip



Top end of DUT with KNB-57L "Battery a" & Belt-Clip

Applicant:	Kenwood USA Corporation	FCC ID:	ALH431000	DUT Model:	NX-320-K3	KENWOOD
DUT Type:	Portable UHF-H PTT Radio Transceiver	Transmitter Frequency Range:		450.0 - 512.0 MHz		
2011 Celltech Labs Inc.		This document is not to be reproduced in whole or in part without the prior written permission of Celltech Labs Inc.				Page 219 of 253

	<u>Date(s) of Evaluation</u> Jan. 4,6,26-28,31, 2011	<u>Test Report Serial No.</u> 121510ALH-T1070-S90U	<u>Test Report Revision No.</u> Rev. 1.2 (3rd Release)	 Test Lab Certificate No. 2470.01
	<u>Test Report Issue Date</u> March 24, 2011	<u>Description of Test(s)</u> Specific Absorption Rate	<u>RF Exposure Category</u> Occupational (Controlled)	

DUT PHOTOGRAPHS



Left Side of DUT with KNB-57L Li-ion "Battery a" & Swivel Belt-Loop accessory



Right Side of DUT with KNB-57L Li-ion "Battery a" & Swivel Belt-Loop accessory



Bottom end of DUT with KNB-57L "Battery a" & Belt-Loop



Top end of DUT with KNB-57L "Battery a" & Belt-Loop

Applicant:	Kenwood USA Corporation	FCC ID:	ALH431000	DUT Model:	NX-320-K3	KENWOOD
DUT Type:	Portable UHF-H PTT Radio Transceiver	Transmitter Frequency Range:		450.0 - 512.0 MHz		
2011 Celltech Labs Inc.		This document is not to be reproduced in whole or in part without the prior written permission of Celltech Labs Inc.				Page 220 of 253

	<u>Date(s) of Evaluation</u> Jan. 4,6,26-28,31, 2011	<u>Test Report Serial No.</u> 121510ALH-T1070-S90U	<u>Test Report Revision No.</u> Rev. 1.2 (3rd Release)	 Test Lab Certificate No. 2470.01
	<u>Test Report Issue Date</u> March 24, 2011	<u>Description of Test(s)</u> Specific Absorption Rate	<u>RF Exposure Category</u> Occupational (Controlled)	

DUT PHOTOGRAPHS



Left Side of DUT with KNB-55L Li-ion "Battery b" & Belt-Clip accessory



Right Side of DUT with KNB-55L Li-ion "Battery b" & Belt-Clip accessory



Bottom end of DUT with KNB-55L "Battery b" & Belt-Clip Top end of DUT with KNB-55L "Battery b" & Belt-Clip

Applicant:	Kenwood USA Corporation	FCC ID:	ALH431000	DUT Model:	NX-320-K3	KENWOOD
DUT Type:	Portable UHF-H PTT Radio Transceiver	Transmitter Frequency Range:		450.0 - 512.0 MHz		
2011 Celltech Labs Inc.		This document is not to be reproduced in whole or in part without the prior written permission of Celltech Labs Inc.				Page 221 of 253

	<u>Date(s) of Evaluation</u> Jan. 4,6,26-28,31, 2011	<u>Test Report Serial No.</u> 121510ALH-T1070-S90U	<u>Test Report Revision No.</u> Rev. 1.2 (3rd Release)	 Test Lab Certificate No. 2470.01
	<u>Test Report Issue Date</u> March 24, 2011	<u>Description of Test(s)</u> Specific Absorption Rate	<u>RF Exposure Category</u> Occupational (Controlled)	

DUT PHOTOGRAPHS



Left Side of DUT with KNB-55L Li-ion "Battery b" & Swivel Belt-Loop accessory



Right Side of DUT with KNB-55L Li-ion "Battery b" & Swivel Belt-Loop accessory



Bottom end of DUT w/ KNB-55L "Battery b" & Belt-Loop

Top end of DUT w/ KNB-55L "Battery b" & Belt-Loop

Applicant:	Kenwood USA Corporation	FCC ID:	ALH431000	DUT Model:	NX-320-K3	KENWOOD
DUT Type:	Portable UHF-H PTT Radio Transceiver	Transmitter Frequency Range:		450.0 - 512.0 MHz		
2011 Celltech Labs Inc.		This document is not to be reproduced in whole or in part without the prior written permission of Celltech Labs Inc.				Page 222 of 253

	<u>Date(s) of Evaluation</u> Jan. 4,6,26-28,31, 2011	<u>Test Report Serial No.</u> 121510ALH-T1070-S90U	<u>Test Report Revision No.</u> Rev. 1.2 (3rd Release)	 Test Lab Certificate No. 2470.01
	<u>Test Report Issue Date</u> March 24, 2011	<u>Description of Test(s)</u> Specific Absorption Rate	<u>RF Exposure Category</u> Occupational (Controlled)	

DUT PHOTOGRAPHS



Left Side of DUT with KNB-56N Ni-MH "Battery c" & Belt-Clip accessory



Right Side of DUT with KNB-56N Ni-MH "Battery c" & Belt-Clip accessory



Bottom end of DUT with KNB-56N "Battery c" & Belt-Clip



Top end of DUT with KNB-56N "Battery c" & Belt-Clip

Applicant:	Kenwood USA Corporation	FCC ID:	ALH431000	DUT Model:	NX-320-K3	KENWOOD
DUT Type:	Portable UHF-H PTT Radio Transceiver	Transmitter Frequency Range:		450.0 - 512.0 MHz		
2011 Celltech Labs Inc.		This document is not to be reproduced in whole or in part without the prior written permission of Celltech Labs Inc.				Page 223 of 253

	<u>Date(s) of Evaluation</u> Jan. 4,6,26-28,31, 2011	<u>Test Report Serial No.</u> 121510ALH-T1070-S90U	<u>Test Report Revision No.</u> Rev. 1.2 (3rd Release)	 Test Lab Certificate No. 2470.01
	<u>Test Report Issue Date</u> March 24, 2011	<u>Description of Test(s)</u> Specific Absorption Rate	<u>RF Exposure Category</u> Occupational (Controlled)	

DUT PHOTOGRAPHS



Left Side of DUT with KNB-56N Ni-MH "Battery c" & Swivel Belt-Loop accessory



Right Side of DUT with KNB-56N Ni-MH "Battery c" & Swivel Belt-Loop accessory



Bottom end of DUT w/ KNB-56N "Battery c" & Belt-Loop



Top end of DUT w/ KNB-56N "Battery c" & Belt-Loop

Applicant:	Kenwood USA Corporation	FCC ID:	ALH431000	DUT Model:	NX-320-K3	KENWOOD
DUT Type:	Portable UHF-H PTT Radio Transceiver	Transmitter Frequency Range:		450.0 - 512.0 MHz		
2011 Celltech Labs Inc.		This document is not to be reproduced in whole or in part without the prior written permission of Celltech Labs Inc.				Page 224 of 253

	<u>Date(s) of Evaluation</u> Jan. 4,6,26-28,31, 2011	<u>Test Report Serial No.</u> 121510ALH-T1070-S90U	<u>Test Report Revision No.</u> Rev. 1.2 (3rd Release)	 Test Lab Certificate No. 2470.01
	<u>Test Report Issue Date</u> March 24, 2011	<u>Description of Test(s)</u> Specific Absorption Rate	<u>RF Exposure Category</u> Occupational (Controlled)	

DUT PHOTOGRAPHS



Left Side of DUT with KBP-5 Alkaline Case "Battery d" & Belt-Clip accessory



Right Side of DUT with KBP-5 Alkaline Case "Battery d" & Belt-Clip accessory



Bottom end of DUT w/ KBP-5 Alk. Case "Batt d" & Belt-Clip



Top end of DUT w/ KBP-5 Alk. Case "Batt d" & Belt-Clip

Applicant:	Kenwood USA Corporation	FCC ID:	ALH431000	DUT Model:	NX-320-K3	KENWOOD
DUT Type:	Portable UHF-H PTT Radio Transceiver	Transmitter Frequency Range:		450.0 - 512.0 MHz		
2011 Celltech Labs Inc.		This document is not to be reproduced in whole or in part without the prior written permission of Celltech Labs Inc.				Page 225 of 253

	<u>Date(s) of Evaluation</u> Jan. 4,6,26-28,31, 2011	<u>Test Report Serial No.</u> 121510ALH-T1070-S90U	<u>Test Report Revision No.</u> Rev. 1.2 (3rd Release)	 Test Lab Certificate No. 2470.01
	<u>Test Report Issue Date</u> March 24, 2011	<u>Description of Test(s)</u> Specific Absorption Rate	<u>RF Exposure Category</u> Occupational (Controlled)	

DUT PHOTOGRAPHS



Left Side of DUT with KBP-5 Alkaline Case "Battery d" & Swivel Belt-Loop accessory



Right Side of DUT with KBP-5 Alkaline Case "Battery d" & Swivel Belt-Loop accessory



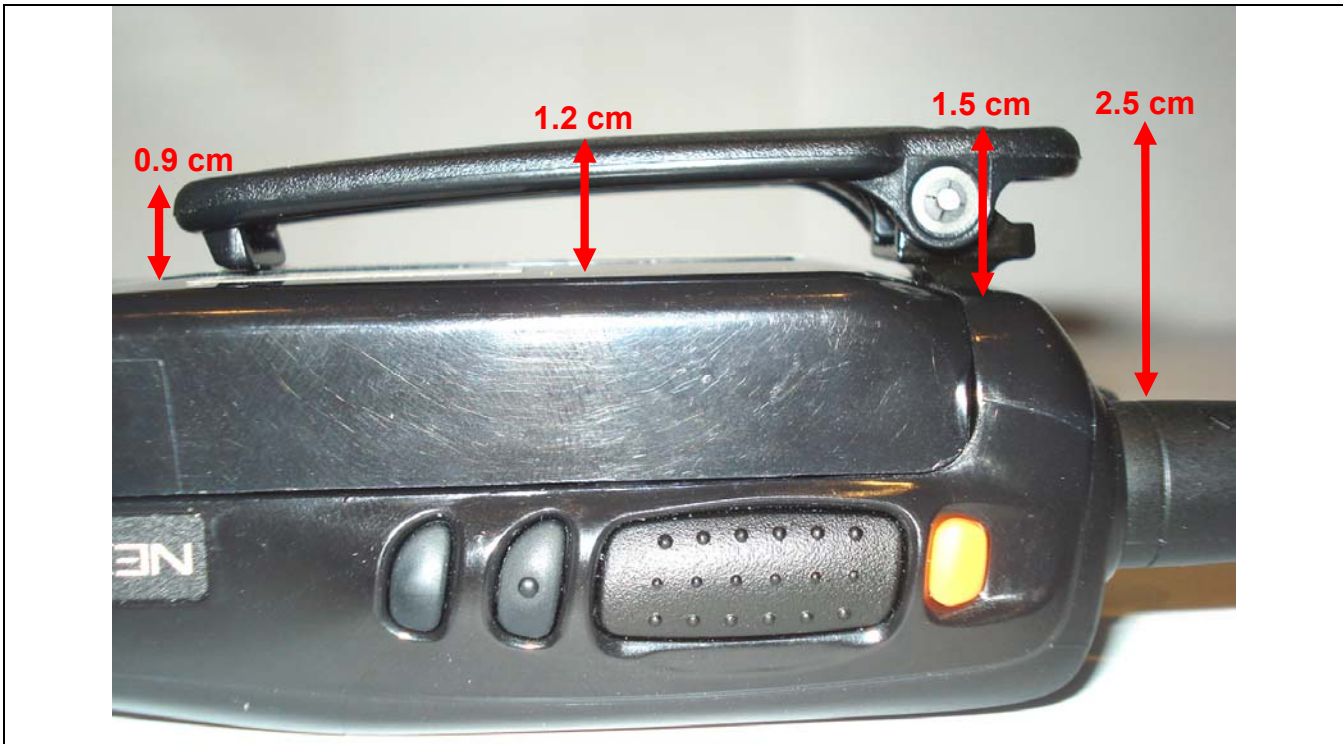
Bottom end of DUT w/ KBP-5 Alk. Case "Batt d" & Belt-Loop

Top end of DUT w/ KBP-5 Alk. Case "Batt d" & Belt-Loop

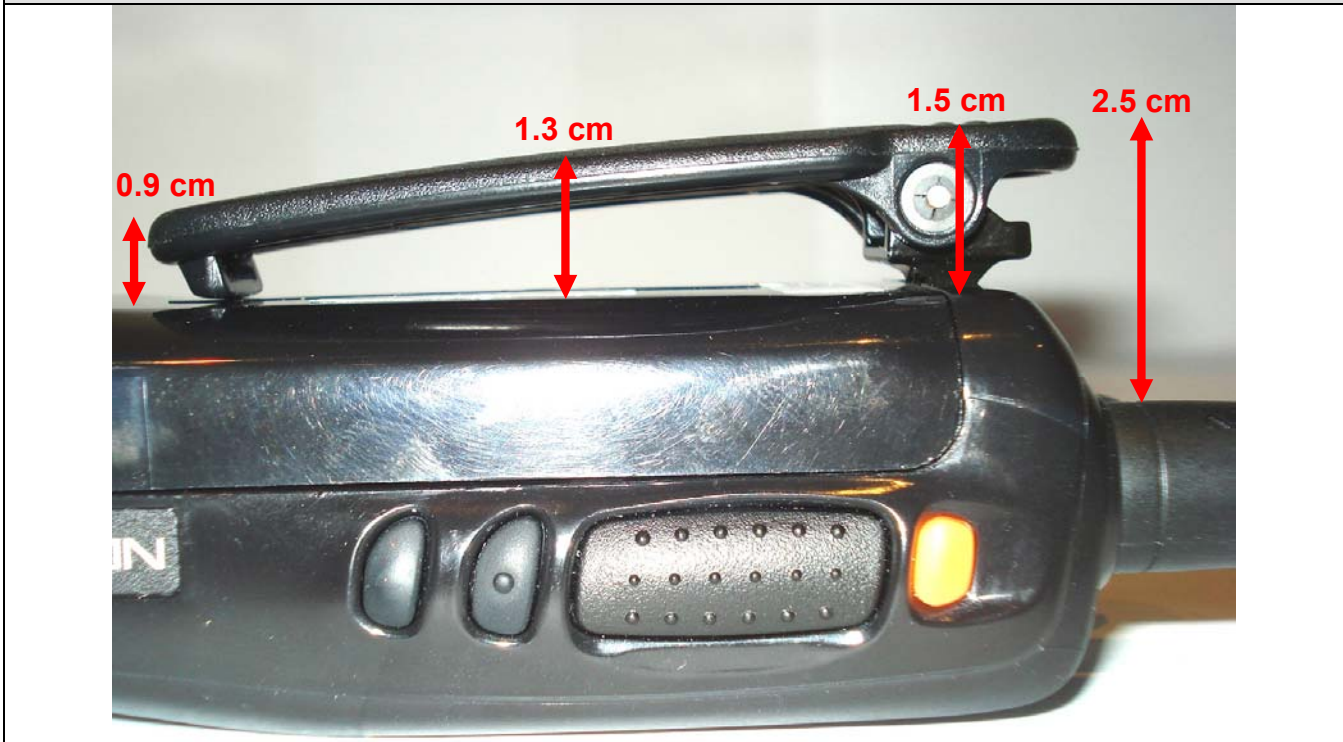
Applicant:	Kenwood USA Corporation	FCC ID:	ALH431000	DUT Model:	NX-320-K3	KENWOOD
DUT Type:	Portable UHF-H PTT Radio Transceiver	Transmitter Frequency Range:		450.0 - 512.0 MHz		
2011 Celltech Labs Inc.		This document is not to be reproduced in whole or in part without the prior written permission of Celltech Labs Inc.				Page 226 of 253

	<u>Date(s) of Evaluation</u> Jan. 4,6,26-28,31, 2011	<u>Test Report Serial No.</u> 121510ALH-T1070-S90U	<u>Test Report Revision No.</u> Rev. 1.2 (3rd Release)	 Test Lab Certificate No. 2470.01
	<u>Test Report Issue Date</u> March 24, 2011	<u>Description of Test(s)</u> Specific Absorption Rate	<u>RF Exposure Category</u> Occupational (Controlled)	

DUT PHOTOGRAPHS



Belt-Clip measurement distance from Back of DUT & Antenna Base – KNB-57L Li-ion “Battery a”

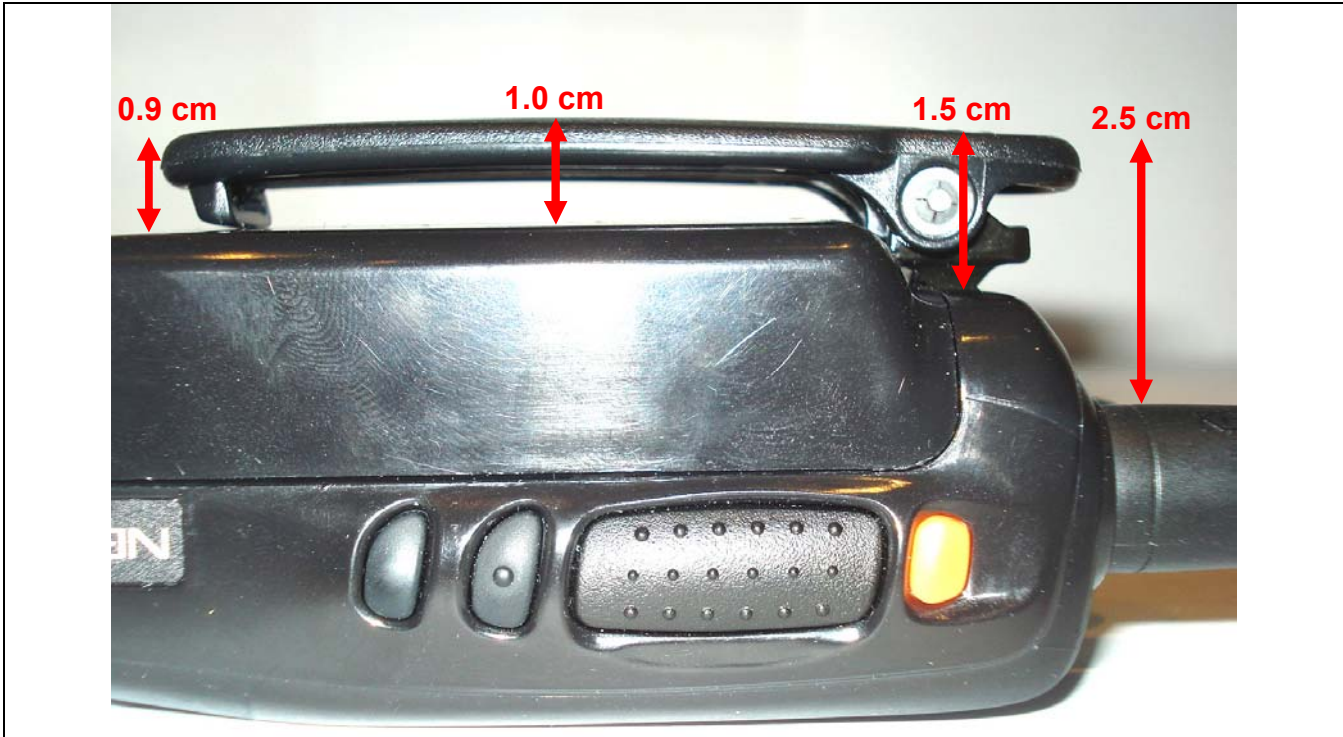


Belt-Clip measurement distance from Back of DUT & Antenna Base – KNB-55L Li-ion “Battery b”

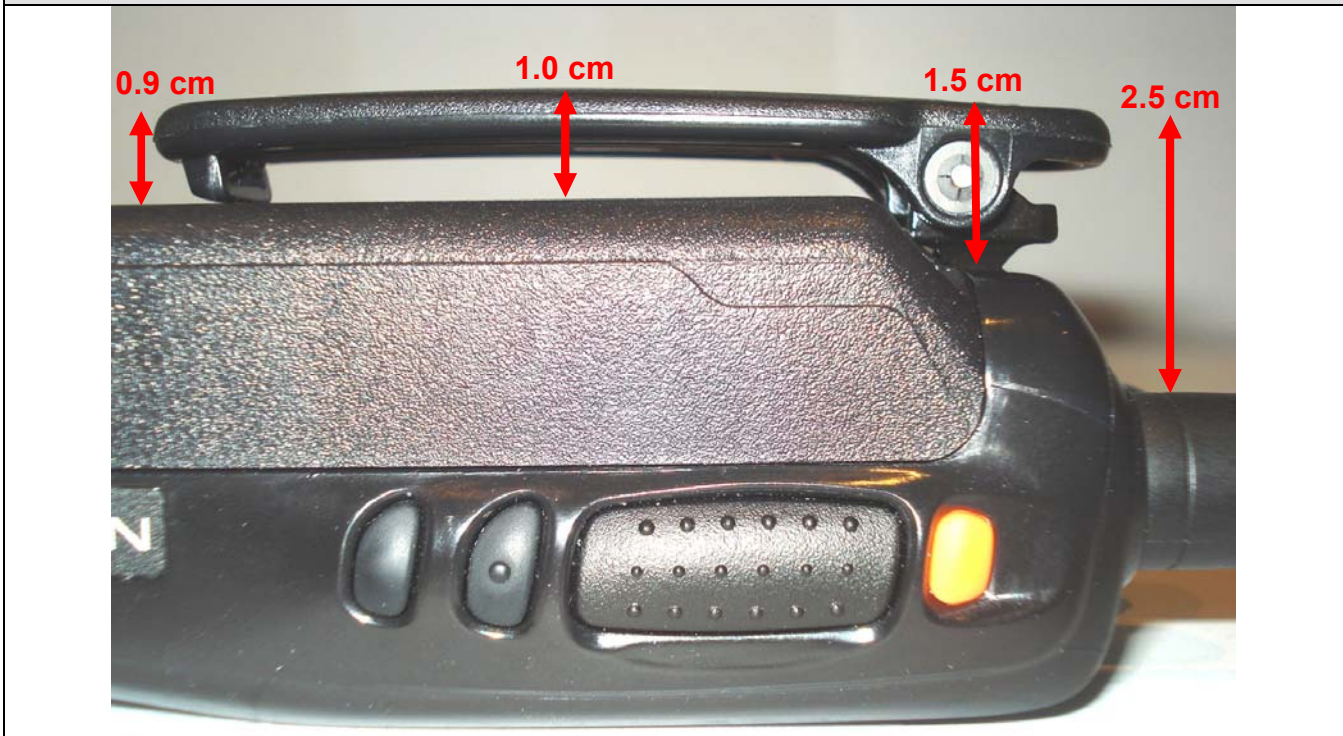
Applicant:	Kenwood USA Corporation	FCC ID:	ALH431000	DUT Model:	NX-320-K3	KENWOOD
DUT Type:	Portable UHF-H PTT Radio Transceiver	Transmitter Frequency Range:		450.0 - 512.0 MHz		
2011 Celltech Labs Inc.		This document is not to be reproduced in whole or in part without the prior written permission of Celltech Labs Inc.				Page 227 of 253

	<u>Date(s) of Evaluation</u> Jan. 4,6,26-28,31, 2011	<u>Test Report Serial No.</u> 121510ALH-T1070-S90U	<u>Test Report Revision No.</u> Rev. 1.2 (3rd Release)	 Test Lab Certificate No. 2470.01
	<u>Test Report Issue Date</u> March 24, 2011	<u>Description of Test(s)</u> Specific Absorption Rate	<u>RF Exposure Category</u> Occupational (Controlled)	

DUT PHOTOGRAPHS



Belt-Clip measurement distance from Back of DUT & Antenna Base – KNB-56N Ni-MH “Battery c”



Belt-Clip measurement distance from Back of DUT & Antenna Base – KBP-5 Alkaline Case “Battery d”

Applicant:	Kenwood USA Corporation	FCC ID:	ALH431000	DUT Model:	NX-320-K3	KENWOOD
DUT Type:	Portable UHF-H PTT Radio Transceiver	Transmitter Frequency Range:		450.0 - 512.0 MHz		
2011 Celltech Labs Inc.		This document is not to be reproduced in whole or in part without the prior written permission of Celltech Labs Inc.				Page 228 of 253