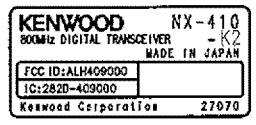
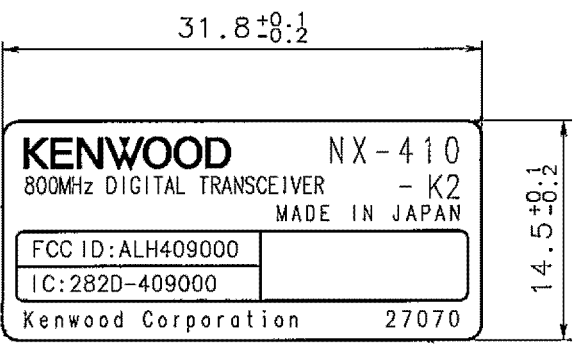


MMV	SYMBOL	REVISION NO.	CODE	ISSUED	DATE
-	△ x -	-	-	-	200 - -



(1:1)

1	B72-2707-04	K2	ALH409000	282D-409000	27070	Y50-6760-10
NO.	PART NUMBER	A	B	C	D	MODEL

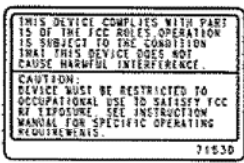
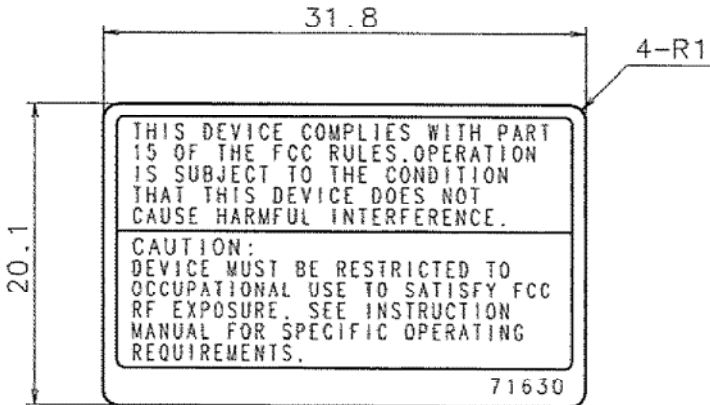
-	-	-	-	LINTEC 100MC PAT'1 (AL EVAPORATION PLATE t0.1 FROSTED SILVER)	SEAL PRINTING (TOKA UV161BlackS), STRONG TACKIFIER, LAMINATE(FROSTING)	Y50-6760-10	-
NO.	PART NUMBER	NOTE	MATERIAL	FINISH	MODEL	QTY.	

SCALE 2:1	DESIGNED	CHECKED	APPROVED	PART NAME			-
UNIT : mm				MODEL NAME PLATE			-
	DATE	20 - -	DRAWING NUMBER MMV -			-	
JIS Z8310-84	KENWOOD Kenwood Corporation		PART NO. B72-2707-04		SHEET NO. 1/1	REL. 00	-

DRWN. DATE 2010-09-01

#

1		2		3		4	
TOLERANCE (C)		MMV	SYMBOL	REVISION NO.	CODE	ISSUED	DATE
~ 6	±0.15	-	△ xALL	52607	NEW ADDITION	R.OTSUKA	2004-03-11
6 ~ 30	±0.20						
30 ~ 80	±0.30						
80 ~ 250	±0.40						
250 ~ 500	±0.55						



(1:1)

NOTES:

FOR DETAILS ON PRINTING, REFER TO THE FILM.
 COLORS SHALL BE AS FOLLOWS:
 LETTERS AND LINES: BLACK BACKGROUND: SILVER

MUST BE PRINTED WITH FILM.

-	-	-	-	AL EVAPORATION PLATE 10.1 FROSTED SILVER	SEAL PRINTING, STRONG TACKIFIER, LAMINATE (FROSTING)	Y50-5870-10	-
NO.	PART NUMBER	NOTE	MATERIAL	FINISH	MODEL	QTY.	
SCALE	2:1	DESIGNED	CHECKED	APPROVED	PART NAME	-	F
UNIT	: mm				STANDARD LABEL	-	
		DATE	2004-03-11	DRAWING NUMBER	MMV -	-	
JIS Z8310-84	KENWOOD			PART NO.	SHEET NO. REL.	-	
	Kenwood Corporation			B42-7163-04	1/1 00	-	S

DRWN. DATE 2004-03-11

#

NX-410-K2
FCC ID: ALH409000
IC: 282D-409000

