
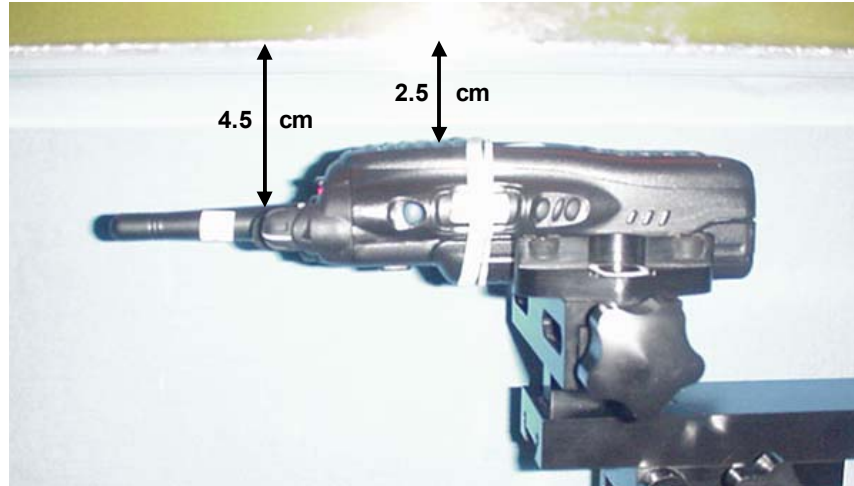
	<u>Date(s) of Evaluation</u> Aug. 31 - Sept. 01, 2006	<u>Test Report Serial No.</u> 082406ALH-T770-S90U	<u>Report Revision No.</u> Revision 1.0	 Certificate No. 2470.01
	<u>Report Issue Date</u> September 18, 2006	<u>Description of Test(s)</u> RF Exposure - SAR	<u>RF Exposure Category</u> Occupational/Controlled	

**APPENDIX D - SAR TEST SETUP & DUT PHOTOGRAPHS**

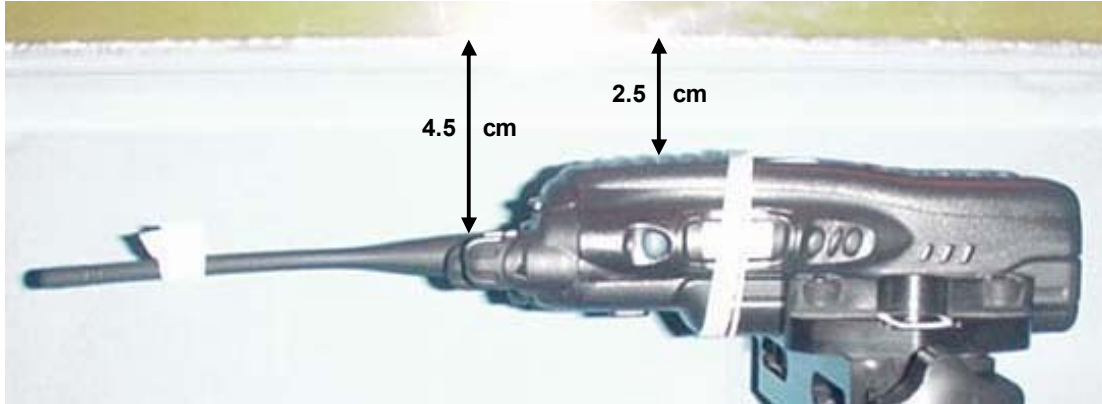
<b>Company:</b>	<b>Kenwood USA Corporation</b>	<b>FCC ID:</b>	<b>ALH39913110</b>	<b>Freq.</b>	<b>450 - 520 MHz</b>	
<b>Model(s):</b>	<b>TK-5310-K, -K2, -K3</b>	<b>Type:</b>	<b>Portable FM UHF PTT Radio Transceiver</b>			
2006 Celltech Labs Inc.	This document is not to be reproduced in whole or in part without the prior written permission of Celltech Labs Inc.					Page 49 of 63

**FACE-HELD SAR TEST SETUP PHOTOGRAPHS**  
2.5 cm Separation Distance from Front of DUT to Planar Phantom  
Stubby Antenna (P/N: KRA-23M/M2)



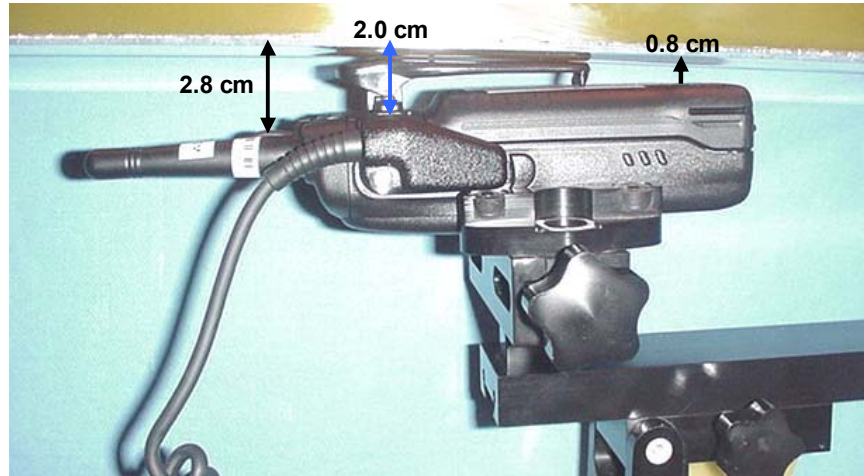
<b>Company:</b>	Kenwood USA Corporation	<b>FCC ID:</b>	ALH39913110	<b>Freq.</b>	450 - 520 MHz	
<b>Model(s):</b>	TK-5310-K, -K2, -K3	<b>Type:</b>	Portable FM UHF PTT Radio Transceiver			
2006 Celltech Labs Inc.		This document is not to be reproduced in whole or in part without the prior written permission of Celltech Labs Inc.				Page 50 of 63

**FACE-HELD SAR TEST SETUP PHOTOGRAPHS**  
2.5 cm Separation Distance from Front of DUT to Planar Phantom  
Whip Antenna (P/N: KRA-27M)



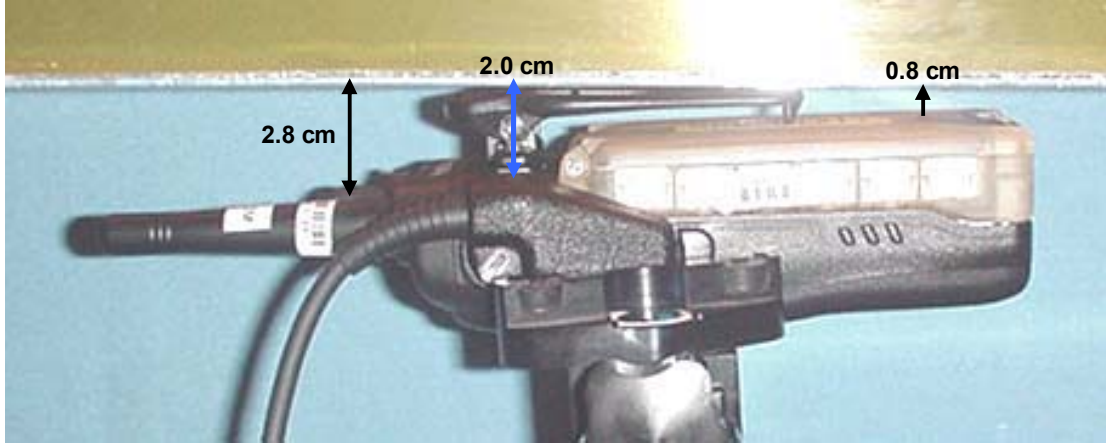
<b>Company:</b>	Kenwood USA Corporation	<b>FCC ID:</b>	ALH39913110	<b>Freq.</b>	450 - 520 MHz	
<b>Model(s):</b>	TK-5310-K, -K2, -K3	<b>Type:</b>	Portable FM UHF PTT Radio Transceiver			
2006 Celltech Labs Inc.		This document is not to be reproduced in whole or in part without the prior written permission of Celltech Labs Inc.				Page 51 of 63

**BODY-WORN SAR TEST SETUP PHOTOGRAPHS**  
**2.0 cm Belt-Clip Separation Distance from Back of DUT to Planar Phantom**  
**NiMH / NiCd Battery and Speaker-Microphone Audio Accessory (P/N: KMC-25)**  
**Stubby Antenna (P/N: KRA-23M)**



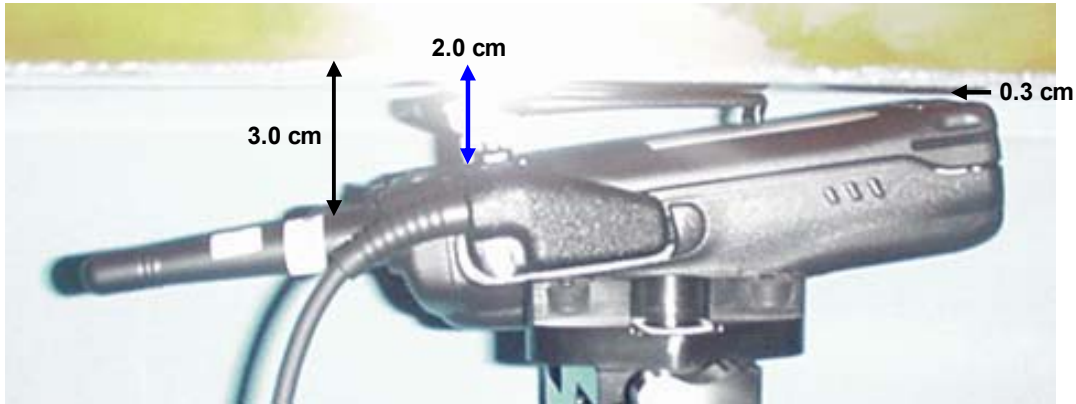
<b>Company:</b>	<b>Kenwood USA Corporation</b>	<b>FCC ID:</b>	<b>ALH39913110</b>	<b>Freq.</b>	<b>450 - 520 MHz</b>	<b>KENWOOD</b>
<b>Model(s):</b>	<b>TK-5310-K, -K2, -K3</b>	<b>Type:</b>	<b>Portable FM UHF PTT Radio Transceiver</b>			
2006 Celltech Labs Inc.		This document is not to be reproduced in whole or in part without the prior written permission of Celltech Labs Inc.				Page 52 of 63

**BODY-WORN SAR TEST SETUP PHOTOGRAPHS**  
**2.0 cm Belt-Clip Separation Distance from Back of DUT to Planar Phantom**  
**Alkaline Battery Pack and Speaker-Microphone Audio Accessory (P/N: KMC-25)**  
**Stubby Antenna (P/N: KRA-23M)**



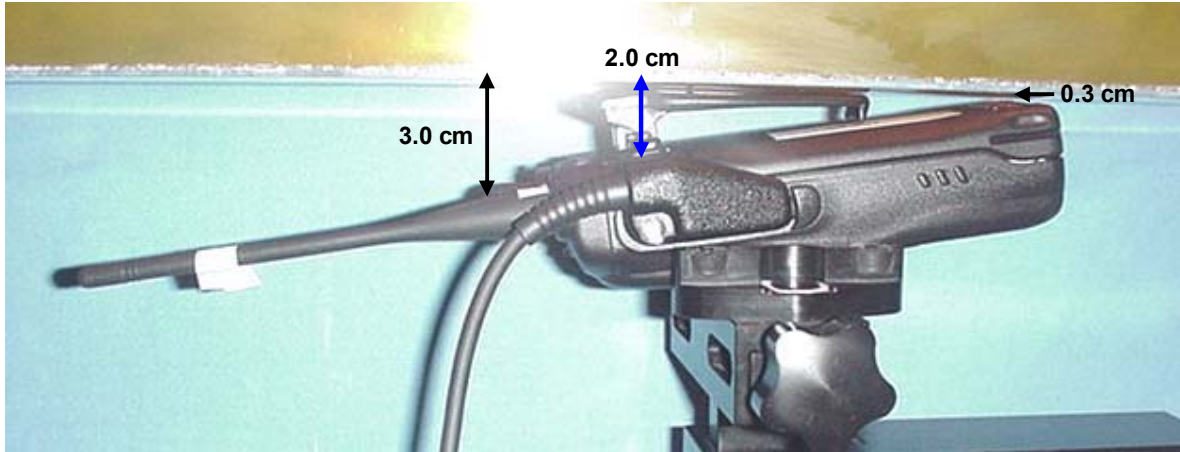
<b>Company:</b>	<b>Kenwood USA Corporation</b>	<b>FCC ID:</b>	<b>ALH39913110</b>	<b>Freq.</b>	<b>450 - 520 MHz</b>	
<b>Model(s):</b>	<b>TK-5310-K, -K2, -K3</b>	<b>Type:</b>	<b>Portable FM UHF PTT Radio Transceiver</b>			
2006 Celltech Labs Inc.		This document is not to be reproduced in whole or in part without the prior written permission of Celltech Labs Inc.				Page 53 of 63

**BODY-WORN SAR TEST SETUP PHOTOGRAPHS**  
**2.0 cm Belt-Clip Separation Distance from Back of DUT to Planar Phantom**  
**Li-ion Battery and Speaker-Microphone Audio Accessory (P/N: KMC-25)**  
**Stubby Antenna (P/N: KRA-23M/M2)**



<b>Company:</b>	Kenwood USA Corporation	<b>FCC ID:</b>	ALH39913110	<b>Freq.</b>	450 - 520 MHz	
<b>Model(s):</b>	TK-5310-K, -K2, -K3	<b>Type:</b>	Portable FM UHF PTT Radio Transceiver			
2006 Celltech Labs Inc.		This document is not to be reproduced in whole or in part without the prior written permission of Celltech Labs Inc.				Page 54 of 63

**BODY-WORN SAR TEST SETUP PHOTOGRAPHS**  
**2.0 cm Belt-Clip Separation Distance from Back of DUT to Planar Phantom**  
**Li-ion Battery and Speaker-Microphone Audio Accessory (P/N: KMC-25)**  
**Whip Antenna (P/N: KRA-27M)**



<b>Company:</b>	Kenwood USA Corporation	<b>FCC ID:</b>	ALH39913110	<b>Freq.</b>	450 - 520 MHz	
<b>Model(s):</b>	TK-5310-K, -K2, -K3	<b>Type:</b>	Portable FM UHF PTT Radio Transceiver			
2006 Celltech Labs Inc.		This document is not to be reproduced in whole or in part without the prior written permission of Celltech Labs Inc.				Page 55 of 63


	<u>Date(s) of Evaluation</u> Aug. 31 - Sept. 01, 2006	<u>Test Report Serial No.</u> 082406ALH-T770-S90U	<u>Report Revision No.</u> Revision 1.0	 Certificate No. 2470.01
	<u>Report Issue Date</u> September 18, 2006	<u>Description of Test(s)</u> RF Exposure - SAR	<u>RF Exposure Category</u> Occupational/Controlled	

**DUT PHOTOGRAPHS**



Front of DUT  
(KRA-23M/M2 Antenna)

Front of DUT  
(KRA-27M Antenna)

<b>Company:</b>	Kenwood USA Corporation	<b>FCC ID:</b>	ALH39913110	<b>Freq.</b>	450 - 520 MHz	
<b>Model(s):</b>	TK-5310-K, -K2, -K3	<b>Type:</b>	Portable FM UHF PTT Radio Transceiver			
2006 Celltech Labs Inc.		This document is not to be reproduced in whole or in part without the prior written permission of Celltech Labs Inc.				Page 56 of 63



	<u>Date(s) of Evaluation</u> Aug. 31 - Sept. 01, 2006	<u>Test Report Serial No.</u> 082406ALH-T770-S90U	<u>Report Revision No.</u> Revision 1.0	 Certificate No. 2470.01
	<u>Report Issue Date</u> September 18, 2006	<u>Description of Test(s)</u> RF Exposure - SAR	<u>RF Exposure Category</u> Occupational/Controlled	

**DUT PHOTOGRAPHS**



**Back of DUT  
(KRA-23M Antenna)**



**Back of DUT with Belt-Clip  
(KRA-23M Antenna)**



**Top end of DUT**



**Bottom end of DUT**

<b>Company:</b>	Kenwood USA Corporation	<b>FCC ID:</b>	ALH39913110	<b>Freq.</b>	450 - 520 MHz	<b>KENWOOD</b>
<b>Model(s):</b>	TK-5310-K, -K2, -K3	<b>Type:</b>	Portable FM UHF PTT Radio Transceiver			
2006 Celltech Labs Inc.		This document is not to be reproduced in whole or in part without the prior written permission of Celltech Labs Inc.				Page 57 of 63

	<u>Date(s) of Evaluation</u> Aug. 31 - Sept. 01, 2006	<u>Test Report Serial No.</u> 082406ALH-T770-S90U	<u>Report Revision No.</u> Revision 1.0	 Certificate No. 2470.01
	<u>Report Issue Date</u> September 18, 2006	<u>Description of Test(s)</u> RF Exposure - SAR	<u>RF Exposure Category</u> Occupational/Controlled	

**DUT PHOTOGRAPHS**



**Left Side of DUT with Belt-Clip (Li-ion Battery)**



**Left Side of DUT with Belt-Clip (NiCd/NiMH Battery)**



**Left Side of DUT with Belt-Clip (Alkaline Battery Pack)**



**Right Side of DUT with Belt-Clip**

<b>Company:</b>	Kenwood USA Corporation	<b>FCC ID:</b>	ALH39913110	<b>Freq.</b>	450 - 520 MHz	<b>KENWOOD</b>
<b>Model(s):</b>	TK-5310-K, -K2, -K3	<b>Type:</b>	Portable FM UHF PTT Radio Transceiver			
2006 Celltech Labs Inc.		This document is not to be reproduced in whole or in part without the prior written permission of Celltech Labs Inc.				Page 58 of 63

	Date(s) of Evaluation Aug. 31 - Sept. 01, 2006	Test Report Serial No. 082406ALH-T770-S90U	Report Revision No. Revision 1.0	 Certificate No. 2470.01
	Report Issue Date September 18, 2006	Description of Test(s) RF Exposure - SAR	RF Exposure Category Occupational/Controlled	

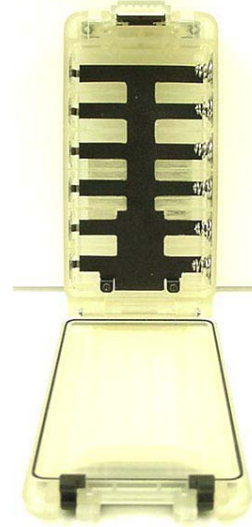
## DUT PHOTOGRAPHS



**DUT Battery Compartment**



**Duracell Procell Batteries**



**Alkaline Battery Case  
(P/N: KBP-6)**



**Li-ion  
P/N: KNB-33L**

**NiCd  
P/N: KNB-31A**

**NiMH  
P/N: KNB-32N**

**NiMH IS  
P/N: KNB-41NC**

**Alkaline Case  
P/N: KBP-6**



**Li-ion  
P/N: KNB-33L**

**NiCd  
P/N: KNB-31A**

**NiMH  
P/N: KNB-32N**

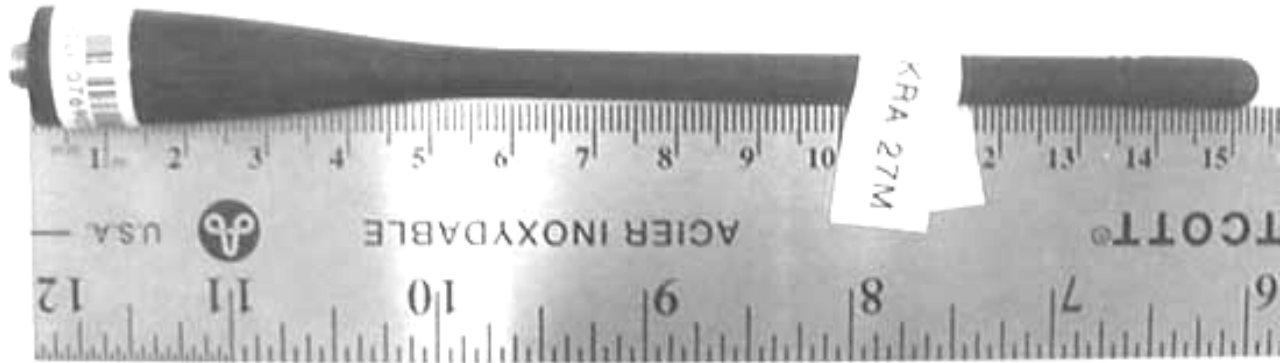
**NiMH IS  
P/N: KNB-41NC**

**Alkaline Case  
P/N: KBP-6**

<b>Company:</b>	Kenwood USA Corporation	<b>FCC ID:</b>	ALH39913110	<b>Freq.</b>	450 - 520 MHz	<b>KENWOOD</b>
<b>Model(s):</b>	TK-5310-K, -K2, -K3	<b>Type:</b>	Portable FM UHF PTT Radio Transceiver			
2006 Celltech Labs Inc.		This document is not to be reproduced in whole or in part without the prior written permission of Celltech Labs Inc.				Page 59 of 63

	<u>Date(s) of Evaluation</u> Aug. 31 - Sept. 01, 2006	<u>Test Report Serial No.</u> 082406ALH-T770-S90U	<u>Report Revision No.</u> Revision 1.0	 Certificate No. 2470.01
	<u>Report Issue Date</u> September 18, 2006	<u>Description of Test(s)</u> RF Exposure - SAR	<u>RF Exposure Category</u> Occupational/Controlled	

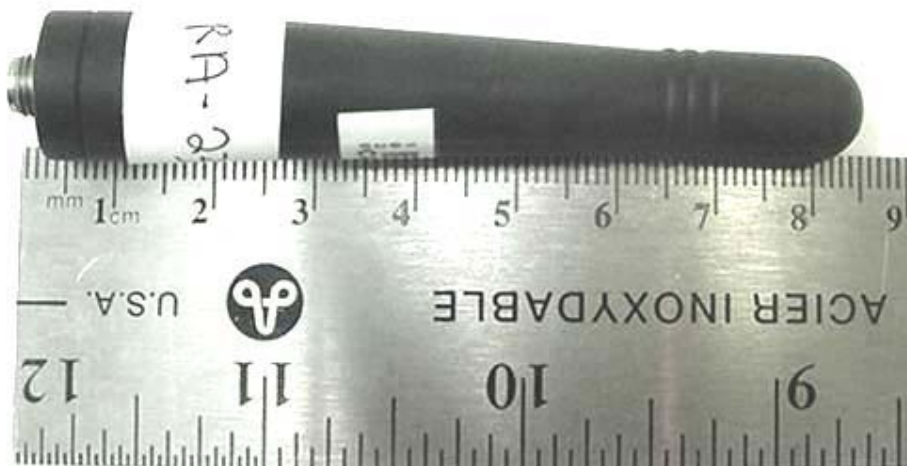
**DUT PHOTOGRAPHS**



**Whip Antenna (P/N: KRA-27M)**




**Stubby Antenna (P/N: KRA-23M)**



**Stubby Antenna (P/N: KRA-23M2)**


<b>Company:</b>	Kenwood USA Corporation	<b>FCC ID:</b>	ALH39913110	<b>Freq.</b>	450 - 520 MHz	<b>KENWOOD</b>
<b>Model(s):</b>	TK-5310-K, -K2, -K3	<b>Type:</b>	Portable FM UHF PTT Radio Transceiver			
2006 Celltech Labs Inc.		This document is not to be reproduced in whole or in part without the prior written permission of Celltech Labs Inc.				Page 60 of 63

	<u>Date(s) of Evaluation</u> Aug. 31 - Sept. 01, 2006	<u>Test Report Serial No.</u> 082406ALH-T770-S90U	<u>Report Revision No.</u> Revision 1.0	 Certificate No. 2470.01
	<u>Report Issue Date</u> September 18, 2006	<u>Description of Test(s)</u> RF Exposure - SAR	<u>RF Exposure Category</u> Occupational/Controlled	

**DUT PHOTOGRAPHS**



**DUT with Speaker-Microphone Audio Accessory (P/N: KMC-25)**

<b>Company:</b>	Kenwood USA Corporation	<b>FCC ID:</b>	ALH39913110	<b>Freq.</b>	450 - 520 MHz	
<b>Model(s):</b>	TK-5310-K, -K2, -K3	<b>Type:</b>	Portable FM UHF PTT Radio Transceiver			
2006 Celltech Labs Inc.		This document is not to be reproduced in whole or in part without the prior written permission of Celltech Labs Inc.				Page 61 of 63