

DECLARATION OF COMPLIANCE SAR RF EXPOSURE EVALUATION

<p><u>Test Lab</u></p> <p>CELLTECH LABS INC. Testing and Engineering Services 1955 Moss Court Kelowna, B.C. Canada V1Y 9L3 Phone: 250-448-7047 Fax: 250-448-7046 e-mail: info@celltechlabs.com web site: www.celltechlabs.com</p>	<p><u>Applicant Information</u></p> <p>KENWOOD USA CORPORATION 3975 John Creek Court, Suite 300 Suwanee, GA 30024 United States</p>
<p>FCC IDENTIFIER: ALH37693110 IC IDENTIFIER: 282D-37693110 Model(s): TK-3212-1</p>	
<p>Rule Part(s): FCC 47 CFR §2.1093; IC RSS-102 Issue 1 (Provisional) Test Procedure(s): FCC OET Bulletin 65, Supplement C (Edition 01-01) Device Classification: Licensed Non-Broadcast Transmitter Held to Face (TNF) Device Description: Portable FM UHF PTT Radio Transceiver</p>	
<p>Modulation: FM (UHF) Tx Frequency Range: 450 - 490 MHz Max. RF Output Power Measured: 36.72 dBm Conducted (450.05 MHz) 36.97 dBm Conducted (470.05 MHz) 36.88 dBm Conducted (489.95 MHz)</p>	
<p>Antenna Type(s) Tested: Stubby 450 - 490 MHz (P/N: KRA-17M) Stubby 450 - 490 MHz (P/N: KRA-23M) Whip 450 - 490 MHz (P/N: KRA-27M)</p>	
<p>Battery Type(s) Tested: Ni-MH 7.5 V, 1500 mAh (P/N: KNB-29N)</p>	
<p>Body-Worn Accessories Tested: Plastic Belt-Clip with Metal Spring (P/N: KBH-10) Speaker-Microphone (P/N: KMC-17) Boom-Mic Headset (P/N: KHS-21)</p>	
<p>Max. SAR Levels Evaluated: Face-held: 4.33 W/kg (50% Duty Cycle) Body-worn: 6.07 W/kg (50% Duty Cycle)</p>	

Celltech Labs Inc. declares under its sole responsibility that this wireless portable device has demonstrated compliance with the Specific Absorption Rate (SAR) RF exposure requirements specified in FCC 47 CFR §2.1093 and Health Canada's Safety Code 6. The device was tested in accordance with the measurement standards and procedures specified in FCC OET Bulletin 65, Supplement C (Edition 01-01) and Industry Canada RSS-102 Issue 1 (Provisional) for the Occupational / Controlled Exposure environment. All measurements were performed in accordance with the SAR system manufacturer recommendations.

I attest to the accuracy of data. All measurements were performed by me or were made under my supervision and are correct to the best of my knowledge and belief. I assume full responsibility for the completeness of these measurements and vouch for the qualifications of all persons taking them.

This test report shall not be reproduced partially, or in full, without the prior written approval of Celltech Labs Inc. The results and statements contained in this report pertain only to the device(s) evaluated.

Performed By:



Spencer Watson
Compliance Technologist
Celltech Labs Inc.

Reviewed By:



Russell W. Pipe
Senior Compliance Technologist
Celltech Labs Inc.



TABLE OF CONTENTS		
1.0	INTRODUCTION.....	3
2.0	DESCRIPTION OF DUT.....	3
3.0	SAR MEASUREMENT SYSTEM.....	4
4.0	MEASUREMENT SUMMARY.....	5-6
5.0	DETAILS OF SAR EVALUATION.....	7
6.0	EVALUATION PROCEDURES.....	7
7.0	SYSTEM PERFORMANCE CHECK.....	8
8.0	SIMULATED EQUIVALENT TISSUES.....	9
9.0	SAR SAFETY LIMITS.....	9
10.0	ROBOT SYSTEM SPECIFICATIONS.....	10
11.0	PROBE SPECIFICATION.....	11
12.0	PLANAR PHANTOM.....	11
13.0	VALIDATION PHANTOM.....	11
14.0	DEVICE HOLDER.....	11
15.0	TEST EQUIPMENT LIST.....	12
16.0	MEASUREMENT UNCERTAINTIES.....	13-14
17.0	REFERENCES.....	15
	APPENDIX A - SAR MEASUREMENT DATA.....	16
	APPENDIX B - SYSTEM PERFORMANCE CHECK DATA.....	17
	APPENDIX C - SYSTEM VALIDATION PROCEDURES.....	18
	APPENDIX D - PROBE CALIBRATION.....	19
	APPENDIX E - MEASURED FLUID DIELECTRIC PARAMETERS.....	20
	APPENDIX F - SAR TEST SETUP & DUT PHOTOGRAPHS.....	21

1.0 INTRODUCTION

This measurement report demonstrates compliance of the Kenwood USA Corporation Model: TK-3212-1 Portable FM UHF PTT Radio Transceiver FCC ID: ALH37693110 with the SAR (Specific Absorption Rate) RF exposure requirements specified in FCC 47 CFR §2.1093 (see reference [1]), and Health Canada's Safety Code 6 (see reference [2]) for the Occupational / Controlled Exposure environment. The measurement procedures described in FCC OET Bulletin 65, Supplement C (Edition 01-01) (see reference [3]) and IC RSS-102 Issue 1 (Provisional) (see reference [4]), were employed. A description of the product, operating configuration, detailed summary of the test results, methodology and procedures used in the evaluation, equipment used, and the various provisions of the rules are included within this test report.

2.0 DESCRIPTION OF DEVICE UNDER TEST (DUT)

FCC Rule Part(s)	47 CFR §2.1093		
IC Rule Part(s)	RSS-102 Issue 1 (Provisional)		
Test Procedure(s)	FCC OET Bulletin 65, Supplement C (Edition 01-01)		
Device Classification	Licensed Non-Broadcast Transmitter Held to Face (TNF)		
Device Description	Portable FM UHF PTT Radio Transceiver		
FCC IDENTIFIER	ALH37693110		
IC IDENTIFIER	282D-37693110		
Model(s)	TK-3212-1		
Serial No.	00000002	Identical Prototype	
Modulation	FM (UHF)		
Tx Frequency Range	450 - 490 MHz		
Max. RF Output Power Measured	36.72 dBm	Conducted	450.05 MHz
	36.97 dBm	Conducted	470.05 MHz
	36.88 dBm	Conducted	489.95 MHz
Antenna Type(s) Tested	Stubby	450 - 490 MHz	Length: 79 mm P/N: KRA-17M
	Stubby	450 - 490 MHz	Length: 84 mm P/N: KRA-23M
	Whip	450 - 490 MHz	Length: 153 mm P/N: KRA-27M
Battery Type(s) Tested	Ni-MH	7.5 V	1500 mAh P/N: KNB-29N
Body-Worn Accessories Tested	Plastic Belt-Clip (with Metal Spring)		P/N: KBH-10
	Speaker-Microphone		P/N: KMC-17
	Boom-Mic Headset		P/N: KHS-21

3.0 SAR MEASUREMENT SYSTEM

Celltech Labs Inc. SAR measurement facility utilizes the Dosimetric Assessment System (DASY™) manufactured by Schmid & Partner Engineering AG (SPEAG™) of Zurich, Switzerland. The DASY4 measurement system is comprised of the measurement server, robot controller, computer, near-field probe, probe alignment sensor, specific anthropomorphic mannequin (SAM) phantom, and various planar phantoms for brain and/or body SAR evaluations. The robot is a six-axis industrial robot performing precise movements to position the probe to the location (points) of maximum electromagnetic field (EMF). A cell controller system contains the power supply, robot controller, teach pendant (Joystick), and remote control, is used to drive the robot motors. The Staubli robot is connected to the cell controller to allow software manipulation of the robot. A data acquisition electronic (DAE) circuit performs the signal amplification, signal multiplexing, AD-conversion, offset measurements, mechanical surface detection, collision detection, etc. is connected to the Electro-optical coupler (EOC). The EOC performs the conversion from the optical into digital electric signal of the DAE and transfers data to the DASY4 measurement server. The DAE4 utilizes a highly sensitive electrometer-grade preamplifier with auto-zeroing, a channel and gain-switching multiplexer, a fast 16-bit AD-converter and a command decoder and control logic unit. Transmission to the DASY4 measurement server is accomplished through an optical downlink for data and status information and an optical uplink for commands and clock lines. The mechanical probe-mounting device includes two different sensor systems for frontal and sidewise probe contacts. The sensor systems are also used for mechanical surface detection and probe collision detection. The robot uses its own controller with a built in VME-bus computer.



DASY4 SAR Measurement System with validation phantom



DASY4 SAR Measurement System with Plexiglas planar phantom

Applicant:	Kenwood USA Corporation	FCC ID:	ALH37693110	IC ID:	282D-37693110
Model:	TK-3212-1	Portable FM UHF PTT Radio Transceiver		450 - 490 MHz	KENWOOD
2004 Celltech Labs Inc.		This document is not to be reproduced in whole or in part without the written permission of Celltech Labs Inc.			4 of 21

4.0 MEASUREMENT SUMMARY

FACE-HELD SAR EVALUATION RESULTS

Freq. (MHz)	Chan.	Test Mode	Antenna Type	Antenna Part No.	Battery Type	Separation Distance to Planar Phantom (cm)	Cond. Power Before Test (dBm)	Measured SAR 1g (W/kg)		SAR Drift During Test (dB)	Scaled SAR 1g (W/kg)	
								Duty Cycle			Duty Cycle	
								100%	50%		100%	50%
470.05	Mid	CW	Whip	KRA-27M	Ni-MH	2.5	36.90	6.82	3.41	-0.666	7.95	3.98
470.05	Mid	CW	Stubby	KRA-23M	Ni-MH	2.5	36.93	7.04	3.52	-0.899	8.66	4.33
450.05	Low	CW	Stubby	KRA-23M	Ni-MH	2.5	36.71	5.22	2.61	-0.467	5.81	2.91
489.95	High	CW	Stubby	KRA-23M	Ni-MH	2.5	36.83	3.23	1.62	-0.955	4.02	2.01
470.05	Mid	CW	Stubby	KRA-17M	Ni-MH	2.5	36.97	7.55	3.78	-0.514	8.50	4.25
450.05	Low	CW	Stubby	KRA-17M	Ni-MH	2.5	36.72	4.94	2.47	-0.599	5.67	2.84
489.95	High	CW	Stubby	KRA-17M	Ni-MH	2.5	36.87	4.28	2.14	-0.923	5.29	2.65

ANSI / IEEE C95.1 1999 - SAFETY LIMIT
Spatial Peak - Controlled Exposure / Occupational
BRAIN: 8.0 W/kg (averaged over 1 gram)

Test Date	November 05, 2004		Relative Humidity	32		%
Measured Fluid Type	450 MHz Brain		Atmospheric Pressure	102.3		kPa
Dielectric Constant ϵ_r	IEEE Target		Ambient Temperature	23.3		°C
	43.5	$\pm 5\%$	42.5	Fluid Temperature	22.1	°C
Conductivity σ (mho/m)	IEEE Target		Fluid Depth	≥ 15		cm
	0.87	$\pm 5\%$	0.86	ρ (Kg/m ³)	1000	

Note(s):

1. The measurement results were obtained with the DUT tested in the conditions described in this report. Detailed measurement data and plots showing the maximum SAR location of the DUT are reported in Appendix A.
2. If the scaled SAR levels at the mid channel (50% duty cycle) were ≥ 3 dB below the SAR limit, SAR evaluation for the low and high channels was optional per FCC OET Bulletin 65, Supplement C, Edition 01-01 (see reference [3]).
3. The power drifts measured by the DASY4 system for the duration of the SAR evaluations were added to the measured SAR levels to report scaled SAR results as shown in the above table.
4. The ambient and fluid temperatures were measured prior to, and during, the fluid dielectric parameter check and the SAR evaluation. The temperatures reported were consistent for all measurement periods.
5. The dielectric parameters of the simulated tissue mixture were measured prior to the evaluation using an HP 85070C Dielectric Probe Kit and an HP 8753E Network Analyzer (see Appendix E for printout of measured fluid dielectric parameters).
6. The SAR evaluations were performed within 24 hours of the system performance check.

MEASUREMENT SUMMARY (Cont.)

BODY-WORN SAR EVALUATION RESULTS

Test Date	Freq. (MHz)	Chan.	Test Mode	Antenna Type	Antenna Part No.	Battery Type	Body-worn Accessories	Separation Distance to Planar Phantom (cm)	Cond. Power Before Test (dBm)	Measured SAR 1g (W/kg)		SAR Drift During Test (dB)	Scaled SAR 1g (W/kg)	
										Duty Cycle			Duty Cycle	
										100%	50%		100%	50%
Nov-15	470.05	Mid	CW	Whip	KRA-27M	Ni-MH	Speaker-Mic and Belt-Clip	1.1	36.92	8.56	4.28	-0.761	10.2	5.10
Nov-15	470.05	Mid	CW	Whip	KRA-27M	Ni-MH	Headset-Mic and Belt-Clip	1.1	36.89	8.83	4.42	-0.709	10.4	5.20
Nov-15	450.05	Low	CW	Whip	KRA-27M	Ni-MH	Headset-Mic and Belt-Clip	1.1	36.67	8.51	4.26	-0.452	9.44	4.72
Nov-15	489.95	High	CW	Whip	KRA-27M	Ni-MH	Headset-Mic and Belt-Clip	1.1	36.77	6.32	3.16	-0.893	7.76	3.88
Nov-15	470.05	Mid	CW	Stubby	KRA-17M	Ni-MH	Speaker-Mic and Belt-Clip	1.1	36.87	10.2	5.10	-0.757	12.1	6.07
Nov-15	470.05	Mid	CW	Stubby	KRA-17M	Ni-MH	Headset-Mic and Belt-Clip	1.1	36.87	10.3	5.15	-0.621	11.9	5.94
Nov-16	450.05	Low	CW	Stubby	KRA-17M	Ni-MH	Speaker-Mic and Belt-Clip	1.1	36.66	7.77	3.89	-0.483	8.68	4.34
Nov-16	489.95	High	CW	Stubby	KRA-17M	Ni-MH	Speaker-Mic and Belt-Clip	1.1	36.88	5.56	2.78	-0.969	6.95	3.47
Nov-16	470.05	Mid	CW	Stubby	KRA-23M	Ni-MH	Speaker-Mic and Belt-Clip	1.1	36.90	9.06	4.53	-0.989	11.4	5.69
Nov-16	470.05	Mid	CW	Stubby	KRA-23M	Ni-MH	Headset-Mic and Belt-Clip	1.1	36.89	8.27	4.14	-0.998	10.4	5.20
Nov-16	450.05	Low	CW	Stubby	KRA-23M	Ni-MH	Speaker-Mic and Belt-Clip	1.1	36.60	7.37	3.69	-0.385	8.05	4.03
Nov-16	489.95	High	CW	Stubby	KRA-23M	Ni-MH	Speaker-Mic and Belt-Clip	1.1	36.84	4.06	2.03	-1.01	5.12	2.56

ANSI / IEEE C95.1 1999 - SAFETY LIMIT
Spatial Peak - Controlled Exposure / Occupational
BODY: 8.0 W/kg (averaged over 1 gram)

Test Date(s)	November 15, 2004		November 16, 2004		Test Date(s)	Nov-15	Nov-16	Unit
Measured Fluid Type	450 MHz Body		450 MHz Body		Relative Humidity	35	35	%
Dielectric Constant ϵ_r	IEEE Target	Measured	IEEE Target	Measured	Atmospheric Pressure	101.4	102.2	kPa
	56.7	± 5%	56.9	57.4	Ambient Temperature	22.7	21.9	°C
Conductivity σ (mho/m)	450 MHz Body		450 MHz Body		Fluid Temperature	22.2	20.4	°C
	IEEE Target	Measured	IEEE Target	Measured	Fluid Depth	≥ 15	≥ 15	cm
	0.94	± 5%	0.90	0.90	ρ (Kg/m ³)	1000		

Note(s):

- The measurement results were obtained with the DUT tested in the conditions described in this report. Detailed measurement data and plots showing the maximum SAR location of the DUT are reported in Appendix A.
- If the scaled SAR levels at the mid channel (50% duty cycle) were ≥ 3 dB below the SAR limit, SAR evaluation for the low and high channels was optional per FCC OET Bulletin 65, Supplement C, Edition 01-01 (see reference [3]).
- The power drifts measured by the DASY4 system for the duration of the SAR evaluations were added to the measured SAR levels to report scaled SAR results as shown in the above table.
- A SAR-versus-Time power drift evaluation was performed in the test configuration that reported the maximum-scaled SAR level (body-worn, mid channel, Stubby Antenna P/N: KRA-17M, with Speaker-Microphone and Belt-Clip accessories). See Appendix A (SAR Test Plots) for SAR-versus-Time power drift evaluation plot.
- The ambient and fluid temperatures were measured prior to, and during, the fluid dielectric parameter check and the SAR evaluation. The temperatures reported were consistent for all measurement periods.
- The dielectric parameters of the simulated tissue mixture were measured prior to the evaluation using an HP 85070C Dielectric Probe Kit and an HP 8753E Network Analyzer (see Appendix E for printout of measured fluid dielectric parameters).
- The SAR evaluations were performed within 24 hours of the system performance check.

Applicant:	Kenwood USA Corporation	FCC ID:	ALH37693110	IC ID:	282D-37693110
Model:	TK-3212-1	Portable FM UHF PTT Radio Transceiver		450 - 490 MHz	KENWOOD
2004 Celltech Labs Inc.		This document is not to be reproduced in whole or in part without the written permission of Celltech Labs Inc.			6 of 21

Test Report S/N:	102004ALH-T574-S90U
Test Date(s):	November 04-05, 15-16, 2004
Test Type:	FCC/IC SAR Evaluation

5.0 DETAILS OF SAR EVALUATION

The Kenwood USA Corporation Model: TK-3212-1 Portable FM UHF PTT Radio Transceiver FCC ID: ALH37693110 was compliant for localized Specific Absorption Rate (Occupational / Controlled Exposure) based on the test provisions and conditions described below. The detailed test setup photographs are shown in Appendix F.

1. The DUT was evaluated in a face-held configuration with the front of the radio placed parallel to the outer surface of the planar phantom. A 2.5 cm separation distance was maintained between the front side of the DUT and the outer surface of the planar phantom for the duration of the tests.
2. The DUT was evaluated in a body-worn configuration with the back of the radio placed parallel to the outer surface of the planar phantom. The attached belt-clip accessory was touching the planar phantom. The belt-clip accessory provided a 1.1 cm separation distance between the back of the DUT and the outer surface of the planar phantom. The DUT was evaluated for body-worn SAR with the speaker-microphone and boom-mic headset audio accessories consecutively.
3. The conducted power levels were measured before each test using a Gigatronics 8652A Universal Power Meter according to the procedures described in FCC 47 CFR §2.1046.
4. A SAR-versus-Time power drift evaluation was performed in the test configuration that reported the highest scaled SAR level. See Appendix A (SAR Test Plots) for SAR-versus-Time power drift evaluation plot.
5. The area scan evaluation was performed with a fully charged battery. After the area scan was completed the radio was cooled down to room temperature and the battery was replaced with a fully charged battery prior to the zoom scan evaluation.
6. The DUT was tested in unmodulated continuous transmit operation (Continuous Wave mode at 100% duty cycle) with the transmit key constantly depressed. For a push-to-talk device the 50% duty cycle compensation reported assumes a transmit/receive cycle of equal time base.
7. The ambient and fluid temperatures were measured prior to, and during, the fluid dielectric parameter check and the SAR evaluation. The temperatures reported were consistent for all measurement periods.
8. The dielectric parameters of the simulated tissue mixtures were measured prior to the evaluation using an HP 85070C Dielectric Probe Kit and an HP 8753E Network Analyzer (see Appendix E for printout of measured fluid dielectric parameters).
9. The SAR evaluations were performed using a Plexiglas planar phantom.
10. A stack of low-density, low-loss dielectric foamed polystyrene was used in place of the device holder.

6.0 EVALUATION PROCEDURES

- a. (i) The evaluation was performed in the applicable area of the phantom depending on the type of device being tested. For devices held to the ear during normal operation, both the left and right ear positions were evaluated using the SAM phantom.
(ii) For body-worn and face-held devices a planar phantom was used.
- b. The SAR was determined by a pre-defined procedure within the DASY4 software. Upon completion of a reference and optical surface check, the exposed region of the phantom was scanned near the inner surface with a grid spacing of 15mm x 15mm.

An area scan was determined as follows:

- c. Based on the defined area scan grid, a more detailed grid is created to increase the points by a factor of 10. The interpolation function then evaluates all field values between corresponding measurement points.
- d. A linear search is applied to find all the candidate maxima. Subsequently, all maxima are removed that are >2 dB from the global maximum. The remaining maxima are then used to position the cube scans.

A 1g and 10g spatial peak SAR was determined as follows:

- e. Extrapolation is used to find the points between the dipole center of the probe and the surface of the phantom. This data cannot be measured, since the center of the dipoles is 2.7 mm away from the tip of the probe and the distance between the surface and the lowest measuring point is 1.4 mm (see probe calibration document in Appendix D). The extrapolation was based on trivariate quadratics computed from the previously calculated 3D interpolated points nearest the phantom surface.
- f. Interpolated data is used to calculate the average SAR over 1g and 10g cubes by spatially discretizing the entire measured cube. The volume used to determine the averaged SAR is a 1mm grid (42875 interpolated points).
- g. A zoom scan volume of 32 mm x 32 mm x 30 mm (5 x 5 x 7 points) centered at the peak SAR location determined from the area scan is used for all zoom scans for devices with a transmit frequency < 800 MHz. Zoom scans for frequencies ≥ 800 MHz are determined with a scan volume of 30 mm x 30 mm x 30 mm (7 x 7 x 7) to ensure complete capture of the peak spatial-average SAR.

Applicant:	Kenwood USA Corporation	FCC ID:	ALH37693110	IC ID:	282D-37693110
Model:	TK-3212-1	Portable FM UHF PTT Radio Transceiver		450 - 490 MHz	KENWOOD
2004 Celltech Labs Inc.		This document is not to be reproduced in whole or in part without the written permission of Celltech Labs Inc.			7 of 21

7.0 SYSTEM PERFORMANCE CHECK

Prior to the SAR evaluation a system check was performed using a planar phantom with a 450MHz dipole (see Appendix C for system validation procedure). The dielectric parameters of the simulated tissue mixture were measured prior to the system performance check using an HP 85070C Dielectric Probe Kit and an HP 8753E Network Analyzer (see Appendix E for printout of measured fluid dielectric parameters). A forward power of 250mW was applied to the dipole and the system was verified to a tolerance of $\pm 10\%$ (see Appendix B for system performance check test plots).

SYSTEM PERFORMANCE CHECK													
Test Date	450MHz Equiv. Tissue	SAR 1g (W/kg)		Dielectric Constant ϵ_r		Conductivity σ (mho/m)		ρ (Kg/m ³)	Amb. Temp. (°C)	Fluid Temp. (°C)	Fluid Depth (cm)	Humid. (%)	Barom. Press. (kPa)
		IEEE Target	Measured	IEEE Target	Measured	IEEE Target	Measured						
11/04/04	Brain	1.23 ($\pm 10\%$)	1.20 (-2.4%)	43.5 $\pm 5\%$	42.9	0.87 $\pm 5\%$	0.85	1000	22.8	21.9	≥ 15	32	102.7
11/15/04	Brain	1.23 ($\pm 10\%$)	1.20 (-2.4%)	43.5 $\pm 5\%$	43.1	0.87 $\pm 5\%$	0.83	1000	21.8	22.2	≥ 15	33	101.0
11/16/04	Brain	1.23 ($\pm 10\%$)	1.24 (+0.8%)	43.5 $\pm 5\%$	42.2	0.87 $\pm 5\%$	0.83	1000	21.3	21.2	≥ 15	34	102.2

Note(s):

1. The ambient and fluid temperatures were measured prior to, and during, the fluid dielectric parameter check and the system performance check. The temperatures listed in the table above were consistent for all measurement periods.

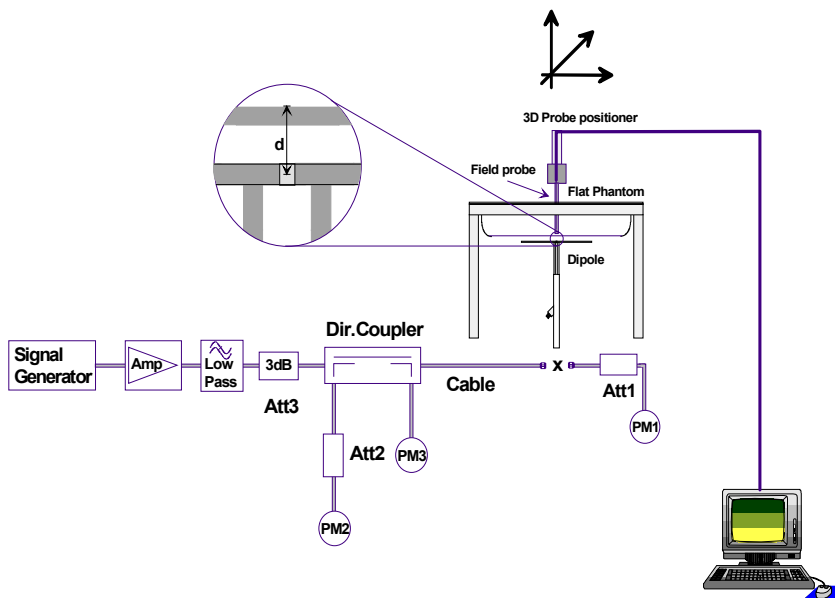


Figure 1. System Performance Check Setup Diagram



450MHz Dipole Setup

8.0 SIMULATED EQUIVALENT TISSUES

The 450MHz simulated tissue mixtures consist of a viscous gel using hydroxethylcellulose (HEC) gelling agent and saline solution. Preservation with a bactericide is added and visual inspection is made to ensure air bubbles are not trapped during the mixing process. The fluid was prepared and measured for dielectric parameters (permittivity and conductivity) according to standardized procedures.

SIMULATED TISSUE MIXTURES		
INGREDIENT	450 MHz Brain	450 MHz Body
	System Check & DUT Evaluation	DUT Evaluation
Water	38.56 %	52.00 %
Sugar	56.32 %	45.65 %
Salt	3.95 %	1.75 %
HEC	0.98 %	0.50 %
Bactericide	0.19 %	0.10 %

9.0 SAR SAFETY LIMITS

EXPOSURE LIMITS	SAR (W/kg)	
	(General Population / Uncontrolled Exposure Environment)	(Occupational / Controlled Exposure Environment)
Spatial Average (averaged over the whole body)	0.08	0.4
Spatial Peak (averaged over any 1g of tissue)	1.60	8.0
Spatial Peak (hands/wrists/feet/ankles averaged over 10g)	4.0	20.0

Notes:

1. Uncontrolled environments are defined as locations where there is potential exposure of individuals who have no knowledge or control of their potential exposure.
2. Controlled environments are defined as locations where there is potential exposure of individuals who have knowledge of their potential exposure and can exercise control over their exposure.

10.0 ROBOT SYSTEM SPECIFICATIONS

Specifications

POSITIONER: Stäubli Unimation Corp. Robot Model: RX60L
Repeatability: 0.02 mm
No. of axis: 6

Data Acquisition Electronic (DAE) System

Cell Controller

Processor: AMD Athlon XP 2400+
Clock Speed: 2.0 GHz
Operating System: Windows XP Professional

Data Converter

Features: Signal Amplifier, multiplexer, A/D converter, and control logic
Software: DASY4 software
Connecting Lines: Optical downlink for data and status info.
 Optical uplink for commands and clock

DASY4 Measurement Server

Function: Real-time data evaluation for field measurements and surface detection
Hardware: PC/104 166MHz Pentium CPU; 32 MB chipdisk; 64 MB RAM
Connections: COM1, COM2, DAE, Robot, Ethernet, Service Interface

E-Field Probe

Model: ET3DV6
Serial No.: 1387
Construction: Triangular core fiber optic detection system
Frequency: 10 MHz to 6 GHz
Linearity: ± 0.2 dB (30 MHz to 3 GHz)

Phantom(s)

Evaluation Phantom

Type: Planar Phantom
Shell Material: Plexiglas
Bottom Thickness: 2.0 mm \pm 0.1 mm
Outer Dimensions: 75.0 cm (L) x 22.5 cm (W) x 20.5 cm (H); Back Plane: 25.7 cm (H)

Validation Phantom (≤ 450 MHz)

Type: Planar Phantom
Shell Material: Plexiglas
Bottom Thickness: 6.2 mm \pm 0.1 mm
Outer Dimensions: 86.0 cm (L) x 39.5 cm (W) x 21.8 cm (H)

11.0 PROBE SPECIFICATION (ET3DV6)

Construction: Symmetrical design with triangular core
 Built-in shielding against static charges
 PEEK enclosure material (resistant to organic solvents, e.g. glycol)

Calibration: In air from 10 MHz to 2.5 GHz
 In brain simulating tissue at frequencies of 900 MHz and 1.8 GHz (accuracy $\pm 8\%$)

Frequency: 10 MHz to > 6 GHz; Linearity: ± 0.2 dB (30 MHz to 3 GHz)

Directivity: ± 0.2 dB in brain tissue (rotation around probe axis)
 ± 0.4 dB in brain tissue (rotation normal to probe axis)

Dynamic Range: $5 \mu\text{W/g}$ to > 100 mW/g; Linearity: ± 0.2 dB

Surface Detection: ± 0.2 mm repeatability in air and clear liquids over diffuse reflecting surfaces

Dimensions: Overall length: 330 mm
 Tip length: 16 mm
 Body diameter: 12 mm
 Tip diameter: 6.8 mm
 Distance from probe tip to dipole centers: 2.7 mm

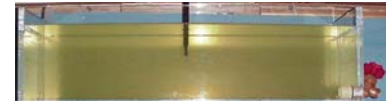
Application: General dosimetry up to 3 GHz
 Compliance tests of mobile phone



ET3DV6 E-Field Probe

12.0 PLANAR PHANTOM

The planar phantom is constructed of Plexiglas material with a 2.0 mm shell thickness for face-held and body-worn SAR evaluations of portable radio transceivers. The planar phantom is mounted on the side of the DASY4 compact system table.



Planar Phantom

13.0 VALIDATION PLANAR PHANTOM

The validation planar phantom is constructed of Plexiglas material with a 6.0 mm shell thickness for system validations at 450MHz and below. The validation planar phantom is mounted in the table of the DASY4 compact system.



Validation Planar Phantom

14.0 DEVICE HOLDER

The DASY4 device holder has two scales for device rotation (with respect to the body axis) and the device inclination (with respect to the line between the ear openings). The plane between the ear openings and the mouth tip has a rotation angle of 65° . The bottom plate contains three pair of bolts for locking the device holder. The device holder positions are adjusted to the standard measurement positions in the three sections.



Device Holder

Applicant:	Kenwood USA Corporation	FCC ID:	ALH37693110	IC ID:	282D-37693110
Model:	TK-3212-1	Portable FM UHF PTT Radio Transceiver		450 - 490 MHz	KENWOOD
2004 Celltech Labs Inc. This document is not to be reproduced in whole or in part without the written permission of Celltech Labs Inc. 11 of 21					

15.0 TEST EQUIPMENT LIST

TEST EQUIPMENT	SERIAL NO.	CALIBRATION DATE
Schmid & Partner DASY4 System	-	-
DASY4 Measurement Server	1078	N/A
-Robot	599396-01	N/A
-DAE3	353	Dec 2003
-DAE3	370	May 2004
-ET3DV6 E-Field Probe	1387	Mar 2004
-ET3DV6 E-Field Probe	1590	May 2004
-300MHz Validation Dipole	135	Oct 2004
-450MHz Validation Dipole	136	Nov 2004
-835MHz Validation Dipole	411	Mar 2004
-900MHz Validation Dipole	054	June 2004
-1800MHz Validation Dipole	247	June 2004
-1900MHz Validation Dipole	151	June 2004
-2450MHz Validation Dipole	150	Sept 2004
-SAM Phantom V4.0C	1033	N/A
-Barski Planar Phantom	03-01	N/A
-Plexiglas Planar Phantom	161	N/A
-Validation Planar Phantom	137	N/A
HP 85070C Dielectric Probe Kit	N/A	N/A
Gigatronics 8651A Power Meter	8650137	April 2004
Gigatronics 8652A Power Meter	1835267	April 2004
Gigatronics 80701A Power Sensor	1833535	April 2004
Gigatronics 80701A Power Sensor	1833542	April 2004
Gigatronics 80701A Power Sensor	1834350	April 2004
HP E4408B Spectrum Analyzer	US39240170	Dec 2003
HP 8594E Spectrum Analyzer	3543A02721	April 2004
HP 8753E Network Analyzer	US38433013	April 2004
HP 8648D Signal Generator	3847A00611	April 2004
Amplifier Research 5S1G4 Power Amplifier	26235	N/A

16.0 MEASUREMENT UNCERTAINTIES

UNCERTAINTY BUDGET FOR DEVICE EVALUATION						
Error Description	Uncertainty Value ±%	Probability Distribution	Divisor	C _i 1g	Standard Uncertainty ±% (1g)	V _i OR V _{eff}
Measurement System						
Probe calibration	± 4.0	Normal	1	1	± 4.0	∞
Axial isotropy of the probe	± 4.7	Rectangular	√3	(1-c _p)	± 1.9	∞
Spherical isotropy of the probe	± 9.6	Rectangular	√3	(c _p)	± 3.9	∞
Spatial resolution	± 0.0	Rectangular	√3	1	± 0.0	∞
Boundary effects	± 5.5	Rectangular	√3	1	± 3.2	∞
Probe linearity	± 4.7	Rectangular	√3	1	± 2.7	∞
Detection limit	± 1.0	Rectangular	√3	1	± 0.6	∞
Readout electronics	± 1.0	Normal	1	1	± 1.0	∞
Response time	± 0.8	Rectangular	√3	1	± 0.5	∞
Integration time	± 1.4	Rectangular	√3	1	± 0.8	∞
RF ambient conditions	± 3.0	Rectangular	√3	1	± 1.7	∞
Mech. constraints of robot	± 0.4	Rectangular	√3	1	± 0.2	∞
Probe positioning	± 2.9	Rectangular	√3	1	± 1.7	∞
Extrapolation & integration	± 3.9	Rectangular	√3	1	± 2.3	∞
Test Sample Related						
Device positioning	± 6.0	Normal	√3	1	± 6.7	12
Device holder uncertainty	± 5.0	Normal	√3	1	± 5.9	8
Power drift	± 5.0	Rectangular	√3		± 2.9	∞
Phantom and Setup						
Phantom uncertainty	± 4.0	Rectangular	√3	1	± 2.3	∞
Liquid conductivity (target)	± 5.0	Rectangular	√3	0.6	± 1.7	∞
Liquid conductivity (measured)	± 5.0	Rectangular	√3	0.6	± 1.7	∞
Liquid permittivity (target)	± 5.0	Rectangular	√3	0.6	± 1.7	∞
Liquid permittivity (measured)	± 5.0	Rectangular	√3	0.6	± 1.7	∞
Combined Standard Uncertainty					± 13.03	
Expanded Uncertainty (k=2)					± 26.07	

Measurement Uncertainty Table in accordance with IEEE Standard 1528-2003 (see reference [5])

MEASUREMENT UNCERTAINTIES (Cont.)

UNCERTAINTY BUDGET FOR SYSTEM VALIDATION						
Error Description	Uncertainty Value ±%	Probability Distribution	Divisor	C_i 1g	Standard Uncertainty ±% (1g)	V_i OR V_{eff}
Measurement System						
Probe calibration	± 4.0	Normal	1	1	± 4.0	∞
Axial isotropy of the probe	± 4.7	Rectangular	√3	(1- C_p)	± 1.9	∞
Spherical isotropy of the probe	± 9.6	Rectangular	√3	(C_p)	± 3.9	∞
Spatial resolution	± 0.0	Rectangular	√3	1	± 0.0	∞
Boundary effects	± 5.5	Rectangular	√3	1	± 3.2	∞
Probe linearity	± 4.7	Rectangular	√3	1	± 2.7	∞
Detection limit	± 1.0	Rectangular	√3	1	± 0.6	∞
Readout electronics	± 1.0	Normal	1	1	± 1.0	∞
Response time	± 0.8	Rectangular	√3	1	± 0.5	∞
Integration time	± 1.4	Rectangular	√3	1	± 0.8	∞
RF ambient conditions	± 3.0	Rectangular	√3	1	± 1.7	∞
Mech. constraints of robot	± 0.4	Rectangular	√3	1	± 0.2	∞
Probe positioning	± 2.9	Rectangular	√3	1	± 1.7	∞
Extrapolation & integration	± 3.9	Rectangular	√3	1	± 2.3	∞
Dipole						
Dipole Axis to Liquid Distance	± 2.0	Rectangular	√3	1	± 1.2	∞
Input Power	± 4.7	Rectangular	√3	1	± 2.7	∞
Phantom and Setup						
Phantom uncertainty	± 4.0	Rectangular	√3	1	± 2.3	∞
Liquid conductivity (target)	± 5.0	Rectangular	√3	0.6	± 1.7	∞
Liquid conductivity (measured)	± 5.0	Rectangular	√3	0.6	± 1.7	∞
Liquid permittivity (target)	± 5.0	Rectangular	√3	0.6	± 1.7	∞
Liquid permittivity (measured)	± 5.0	Rectangular	√3	0.6	± 1.7	∞
Combined Standard Uncertainty					± 9.58	
Expanded Uncertainty (k=2)					± 19.16	

Measurement Uncertainty Table in accordance with IEEE Standard 1528-2003 (see reference [5])

Test Report S/N:	102004ALH-T574-S90U
Test Date(s):	November 04-05, 15-16, 2004
Test Type:	FCC/IC SAR Evaluation

17.0 REFERENCES

- [1] Federal Communications Commission, "Radiofrequency radiation exposure evaluation: portable devices", Rule Part 47 CFR §2.1093: 1999.
- [2] Health Canada, "Limits of Human Exposure to Radiofrequency Electromagnetic Fields in the Frequency Range from 3 kHz to 300 GHz", Safety Code 6.
- [3] Federal Communications Commission, "Evaluating Compliance with FCC Guidelines for Human Exposure to Radio frequency Electromagnetic Fields", OET Bulletin 65, Supplement C (Edition 01-01), FCC, Washington, D.C.: June 2001.
- [4] Industry Canada, "Evaluation Procedure for Mobile and Portable Radio Transmitters with respect to Health Canada's Safety Code 6 for Exposure of Humans to Radio Frequency Fields", Radio Standards Specification RSS-102 Issue 1 (Provisional): September 1999.
- [5] IEEE Std 1528-2003, "Recommended Practice for Determining the Peak Spatial-Average Specific Absorption Rate (SAR) in the Human Head from Wireless Communications Devices: Measurement Techniques": June 2003.

Applicant:	Kenwood USA Corporation	FCC ID:	ALH37693110	IC ID:	282D-37693110
Model:	TK-3212-1	Portable FM UHF PTT Radio Transceiver		450 - 490 MHz	KENWOOD
2004 Celltech Labs Inc.		This document is not to be reproduced in whole or in part without the written permission of Celltech Labs Inc.			15 of 21

Test Report S/N:	102004ALH-T574-S90U
Test Date(s):	November 04-05, 15-16, 2004
Test Type:	FCC/IC SAR Evaluation

APPENDIX B - SYSTEM PERFORMANCE CHECK DATA

Applicant:	Kenwood USA Corporation	FCC ID:	ALH37693110	IC ID:	282D-37693110
Model:	TK-3212-1	Portable FM UHF PTT Radio Transceiver		450 - 490 MHz	KENWOOD
2004 Celltech Labs Inc.		This document is not to be reproduced in whole or in part without the written permission of Celltech Labs Inc.			17 of 21

Date Tested: 11/04/04

System Performance Check - 450 MHz Dipole

DUT: Dipole 450 MHz; Model: D450V2; Type: System Performance Check; Serial: 136; Calibrated: 11/04/2004

Ambient Temp: 22.8 °C; Fluid Temp: 21.9 °C; Barometric Pressure: 102.7 kPa; Humidity: 32%

Communication System: CW
 Forward Conducted Power: 250 mW
 Frequency: 450 MHz; Duty Cycle: 1:1
 Medium: HSL450 ($\sigma = 0.85$ mho/m; $\epsilon_r = 42.9$; $\rho = 1000$ kg/m³)

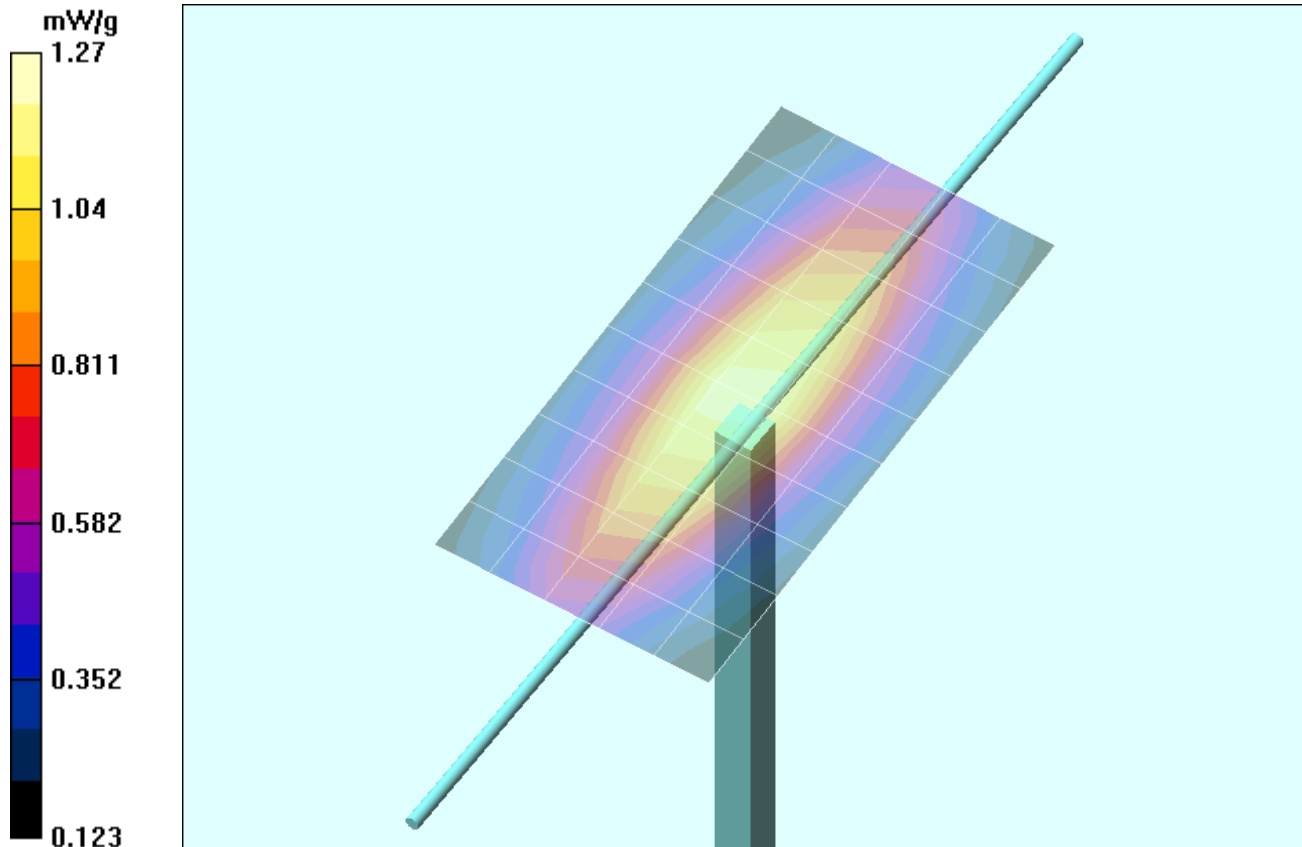
- Probe: ET3DV6 - SN1387; ConvF(7.5, 7.5, 7.5); Calibrated: 18/03/2004
- Sensor-Surface: 4mm (Mechanical Surface Detection)
- Electronics: DAE3 Sn370; Calibrated: 14/05/2004
- Phantom: Validation Planar; Type: Plexiglas; Serial: 137
- Measurement SW: DASY4, V4.3 Build 22; Postprocessing SW: SEMCAD, V1.8 Build 127

450 MHz Dipole - System Performance Check/Area Scan (6x11x1):

Measurement grid: dx=15mm, dy=15mm

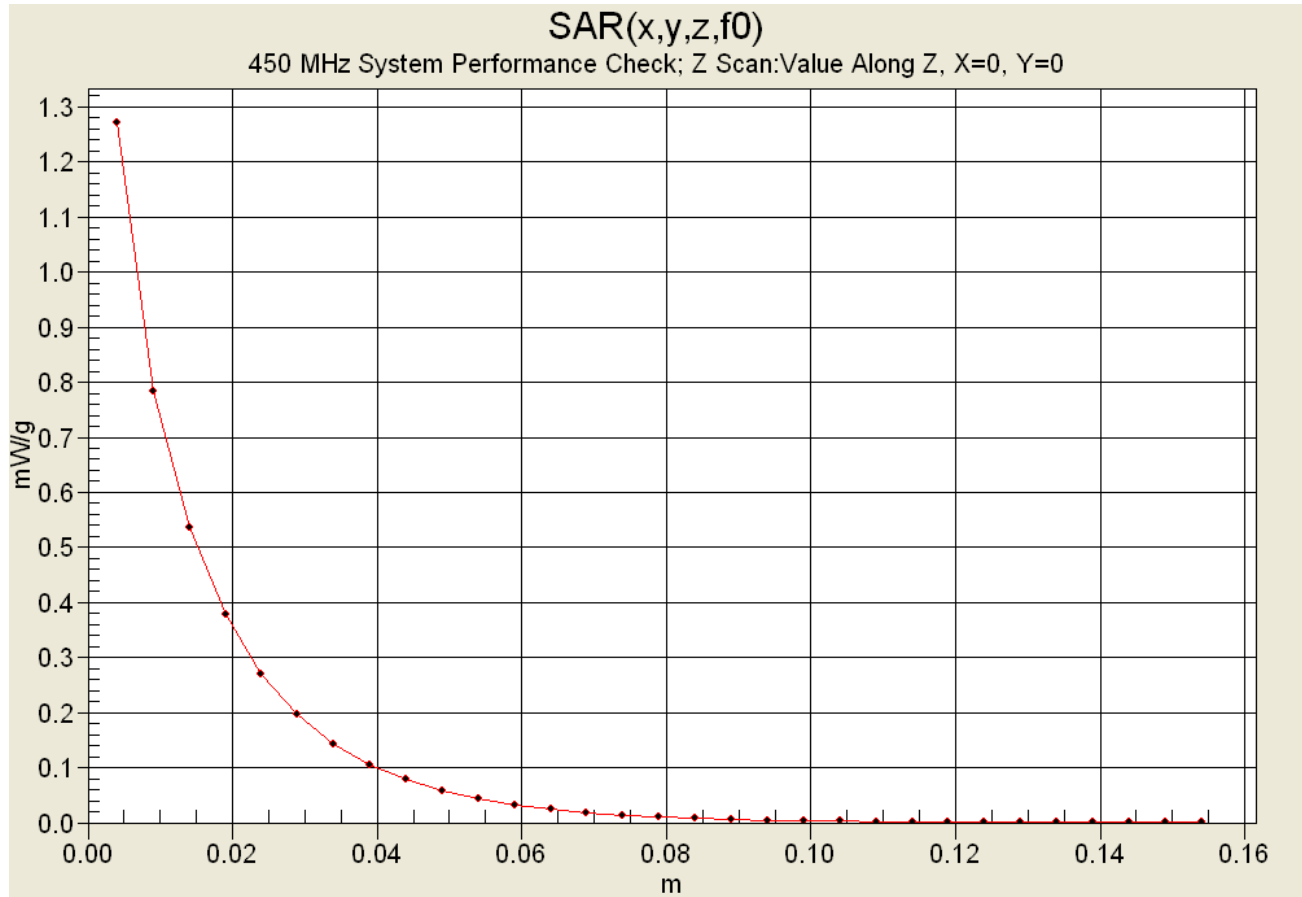
450 MHz Dipole - System Performance Check/Zoom Scan (7x7x7)/Cube 0:

Measurement grid: dx=5mm, dy=5mm, dz=5mm
 Reference Value = 38.9 V/m; Power Drift = -0.1 dB
 Peak SAR (extrapolated) = 2.12 W/kg
SAR(1 g) = 1.20 mW/g; SAR(10 g) = 0.772 mW/g



Applicant:	Kenwood USA Corporation	FCC ID:	ALH37693110	IC ID:	282D-37693110
Model:	TK-3212-1	Portable FM UHF PTT Radio Transceiver		450 - 490 MHz	KENWOOD
2004 Celltech Labs Inc. This document is not to be reproduced in whole or in part without the written permission of Celltech Labs Inc.					

Z-Axis Scan



Applicant:	Kenwood USA Corporation	FCC ID:	ALH37693110	IC ID:	282D-37693110
Model:	TK-3212-1	Portable FM UHF PTT Radio Transceiver		450 - 490 MHz	KENWOOD
2004 Celltech Labs Inc.		This document is not to be reproduced in whole or in part without the written permission of Celltech Labs Inc.			

Date Tested: 11/15/04

System Performance Check - 450 MHz Dipole

DUT: Dipole 450 MHz; Model: D450V2; Type: System Performance Check; Serial: 136; Calibrated: 11/04/2004

Ambient Temp: 21.8 °C; Fluid Temp: 22.2 °C; Barometric Pressure: 101.0 kPa; Humidity: 33%

Communication System: CW
 Forward Conducted Power: 250 mW
 Frequency: 450 MHz; Duty Cycle: 1:1
 Medium: HSL450 ($\sigma = 0.83 \text{ mho/m}$; $\epsilon_r = 43.1$; $\rho = 1000 \text{ kg/m}^3$)

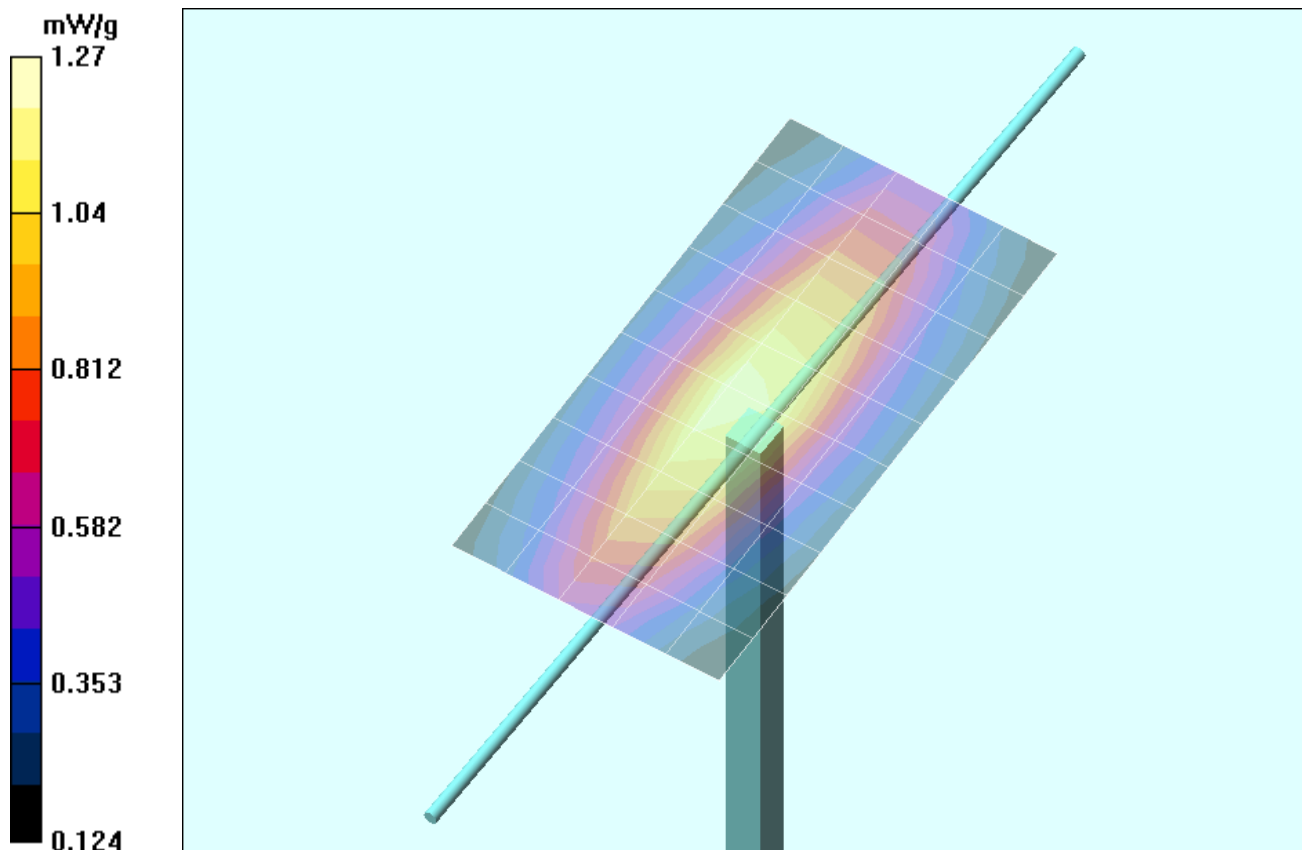
- Probe: ET3DV6 - SN1387; ConvF(7.5, 7.5, 7.5); Calibrated: 18/03/2004
- Sensor-Surface: 4mm (Mechanical Surface Detection)
- Electronics: DAE3 Sn370; Calibrated: 14/05/2004
- Phantom: Validation Planar; Type: Plexiglas; Serial: 137
- Measurement SW: DASY4, V4.3 Build 22; Postprocessing SW: SEMCAD, V1.8 Build 127

450 MHz Dipole - System Performance Check /Area Scan (6x11x1):

Measurement grid: dx=15mm, dy=15mm

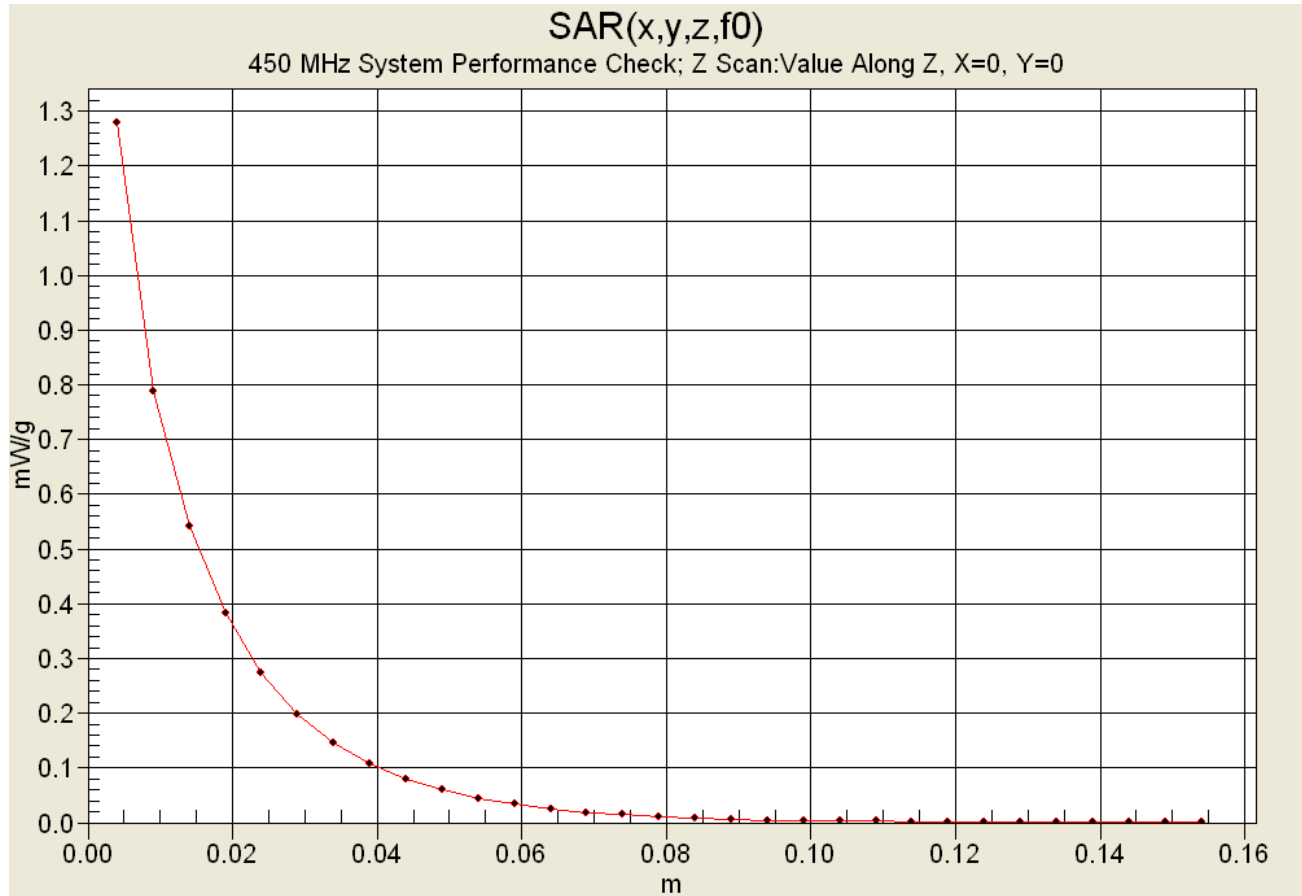
450 MHz Dipole - System Performance Check /Zoom Scan (7x7x7)/Cube 0:

Measurement grid: dx=5mm, dy=5mm, dz=5mm
 Reference Value = 39.5 V/m; Power Drift = -0.1 dB
 Peak SAR (extrapolated) = 2.1 W/kg
SAR(1 g) = 1.20 mW/g; SAR(10 g) = 0.773 mW/g



Applicant:	Kenwood USA Corporation	FCC ID:	ALH37693110	IC ID:	282D-37693110
Model:	TK-3212-1	Portable FM UHF PTT Radio Transceiver		450 - 490 MHz	KENWOOD
2004 Celltech Labs Inc. This document is not to be reproduced in whole or in part without the written permission of Celltech Labs Inc.					

Z-Axis Scan



Applicant:	Kenwood USA Corporation	FCC ID:	ALH37693110	IC ID:	282D-37693110
Model:	TK-3212-1	Portable FM UHF PTT Radio Transceiver		450 - 490 MHz	KENWOOD
2004 Celltech Labs Inc.		This document is not to be reproduced in whole or in part without the written permission of Celltech Labs Inc.			

Date Tested: 11/16/04

System Performance Check - 450 MHz Dipole

DUT: Dipole 450 MHz; Model: D450V2; Type: System Performance Check; Serial: 136; Calibrated: 11/04/2004

Ambient Temp: 21.3 °C; Fluid Temp: 21.2 °C; Barometric Pressure: 102.2 kPa; Humidity: 34%

Communication System: CW
 Forward Conducted Power: 250 mW
 Frequency: 450 MHz; Duty Cycle: 1:1
 Medium: HSL450 ($\sigma = 0.83$ mho/m; $\epsilon_r = 42.2$; $\rho = 1000$ kg/m³)

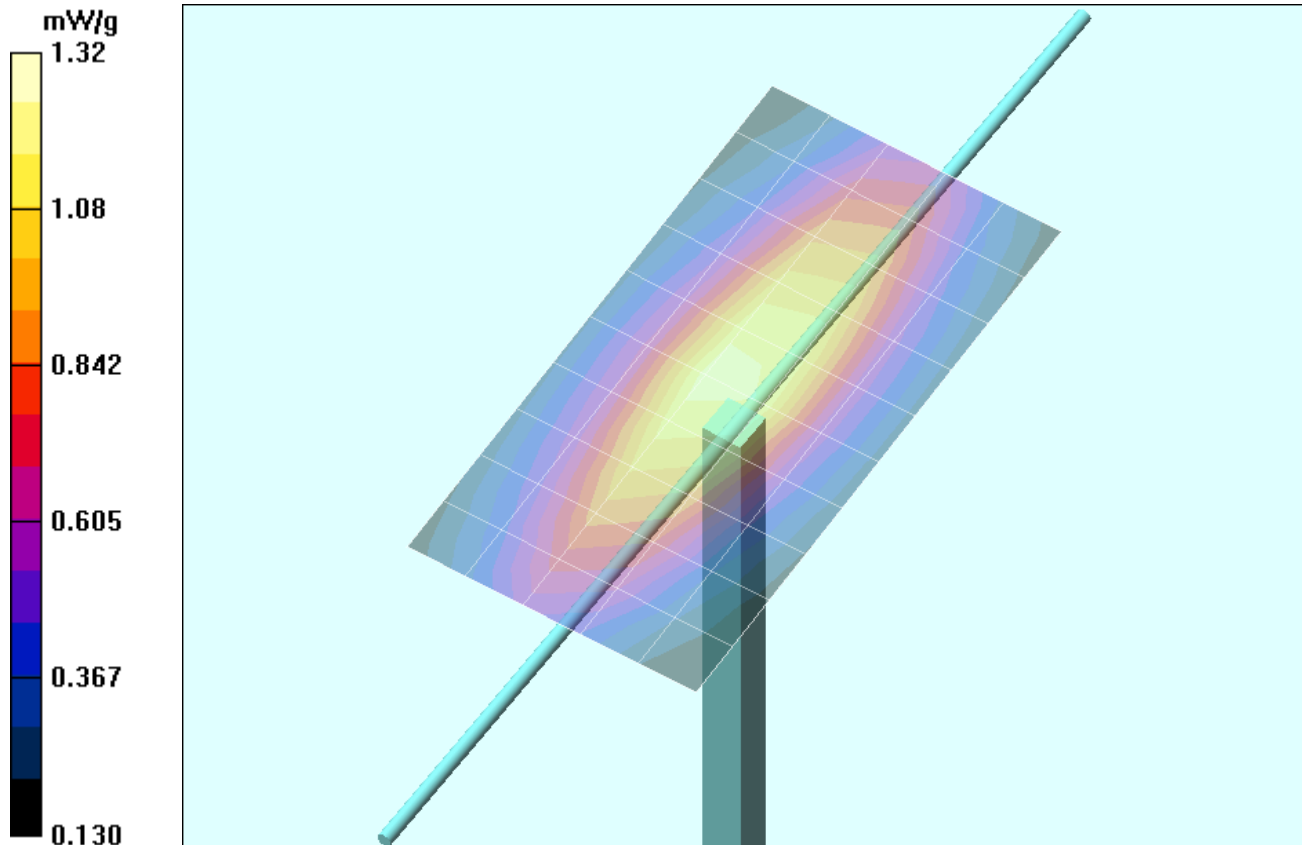
- Probe: ET3DV6 - SN1387; ConvF(7.5, 7.5, 7.5); Calibrated: 18/03/2004
- Sensor-Surface: 4mm (Mechanical Surface Detection)
- Electronics: DAE3 Sn370; Calibrated: 14/05/2004
- Phantom: Validation Planar; Type: Plexiglas; Serial: 137
- Measurement SW: DASY4, V4.3 Build 22; Postprocessing SW: SEMCAD, V1.8 Build 127

450 MHz Dipole - System Performance Check/Area Scan (6x11x1):

Measurement grid: dx=15mm, dy=15mm

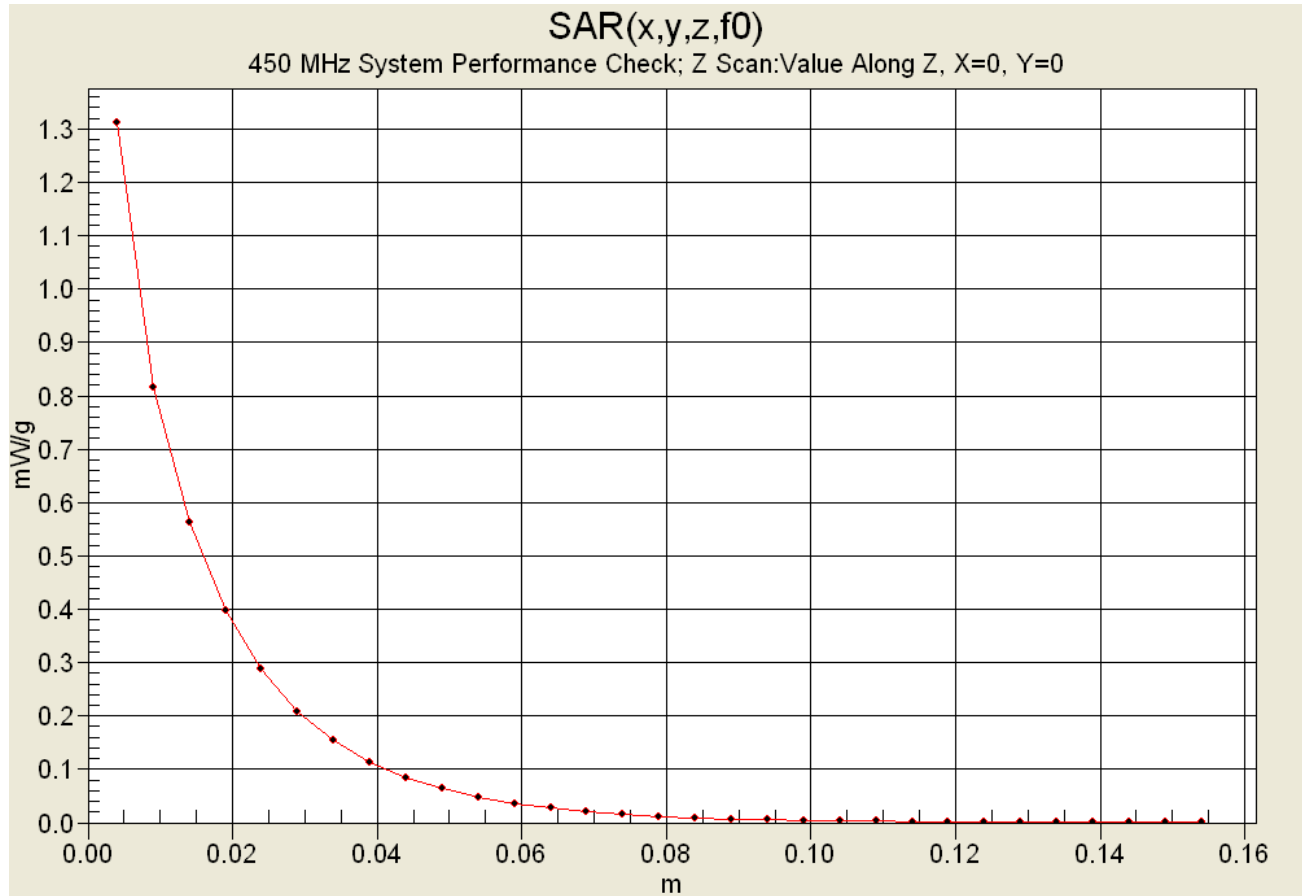
450 MHz Dipole - System Performance Check/Zoom Scan (7x7x7)/Cube 0:

Measurement grid: dx=5mm, dy=5mm, dz=5mm
 Reference Value = 39.9 V/m; Power Drift = -0.002 dB
 Peak SAR (extrapolated) = 2.17 W/kg
SAR(1 g) = 1.24 mW/g; SAR(10 g) = 0.801 mW/g



Applicant:	Kenwood USA Corporation	FCC ID:	ALH37693110	IC ID:	282D-37693110
Model:	TK-3212-1	Portable FM UHF PTT Radio Transceiver		450 - 490 MHz	KENWOOD
2004 Celltech Labs Inc. This document is not to be reproduced in whole or in part without the written permission of Celltech Labs Inc.					

Z-Axis Scan



Applicant:	Kenwood USA Corporation	FCC ID:	ALH37693110	IC ID:	282D-37693110
Model:	TK-3212-1	Portable FM UHF PTT Radio Transceiver		450 - 490 MHz	KENWOOD
2004 Celltech Labs Inc.		This document is not to be reproduced in whole or in part without the written permission of Celltech Labs Inc.			

Test Report S/N:	102004ALH-T574-S90U
Test Date(s):	November 04-05, 15-16, 2004
Test Type:	FCC/IC SAR Evaluation

APPENDIX C - SYSTEM VALIDATION

Applicant:	Kenwood USA Corporation	FCC ID:	ALH37693110	IC ID:	282D-37693110
Model:	TK-3212-1	Portable FM UHF PTT Radio Transceiver		450 - 490 MHz	KENWOOD
2004 Celltech Labs Inc.		This document is not to be reproduced in whole or in part without the written permission of Celltech Labs Inc.			18 of 21

450 MHz SYSTEM VALIDATION DIPOLE

Type:

450 MHz Validation Dipole

Serial Number:

136

Place of Calibration:

Celltech Labs Inc.

Date of Calibration:

November 4, 2004

Celltech Labs Inc. hereby certifies that this device has been calibrated on the date indicated above.

Calibrated by:

Spencer Watson

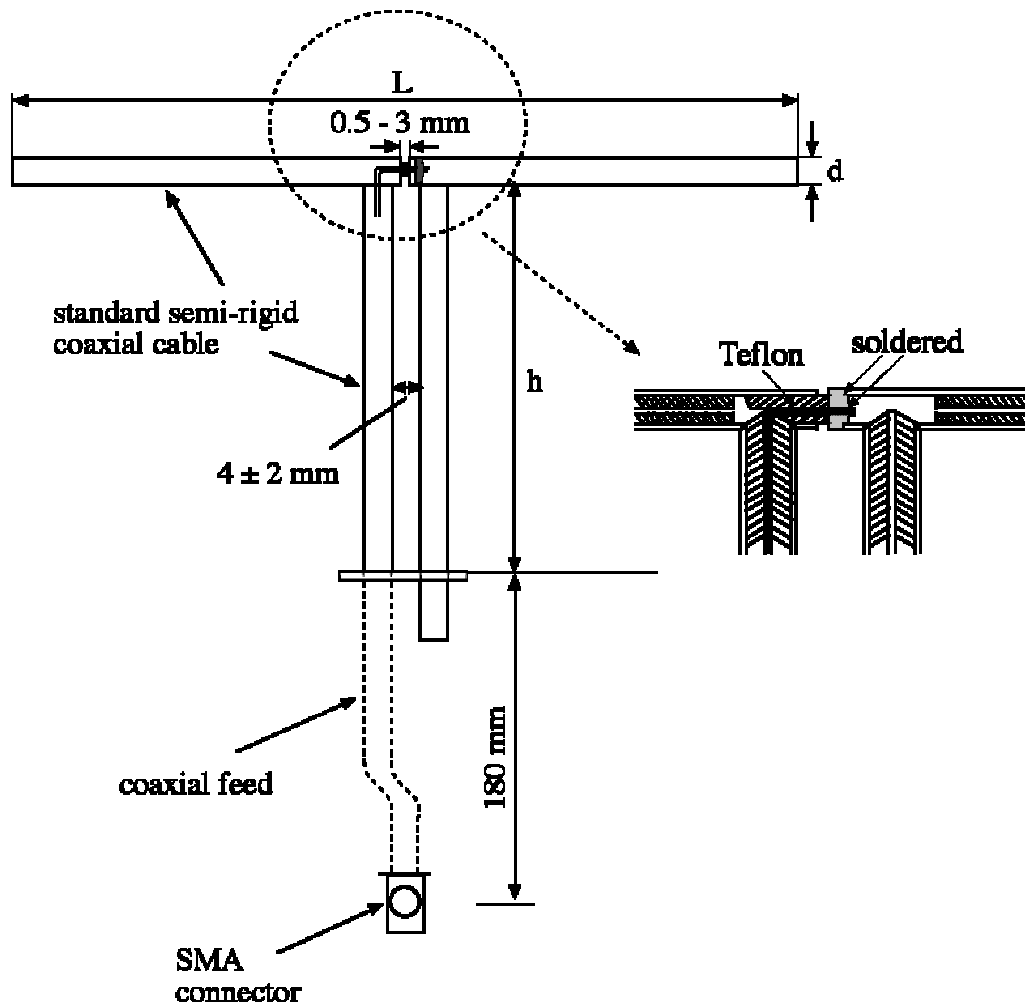
Approved by:

Russell W. Pope

1. Dipole Construction & Electrical Characteristics

The validation dipole was constructed in accordance with the IEEE Std “Recommended Practice for Determining the Spatial-Peak Specific Absorption Rate (SAR) in the Human Body Due to Wireless Communications Devices: Experimental Techniques”. The electrical properties were measured using an HP 8753E Network Analyzer. The network analyzer was calibrated to the validation dipole N-type connector feed point using an HP85032E Type N calibration kit. The dipole was placed parallel to a planar phantom at a separation distance of 15.0mm from the simulating fluid using a loss-less dielectric spacer. The measured input impedance is:

Feed point impedance at 450MHz	$\text{Re}\{Z\} = 54.041\Omega$ $\text{Im}\{Z\} = 5.5258\Omega$
Return Loss at 450MHz	-23.744dB



MEM 1 U FS

1: 54.041 Ω 5.4258 Ω 1.9190 nH

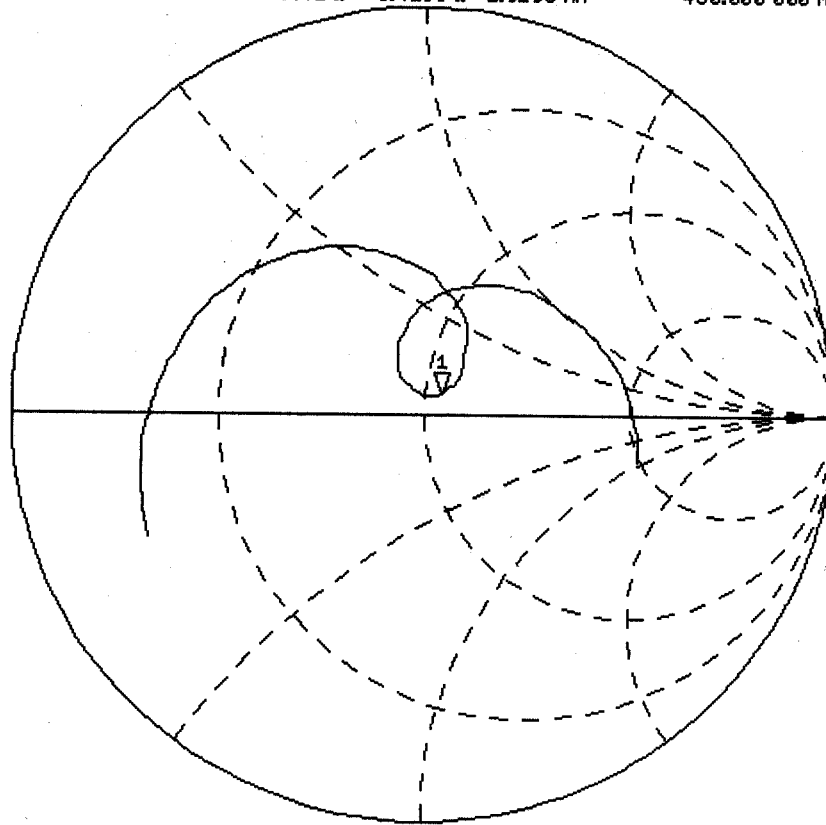
4 Nov 2004 09:05:08

450.000 000 MHz

PRn

Cor

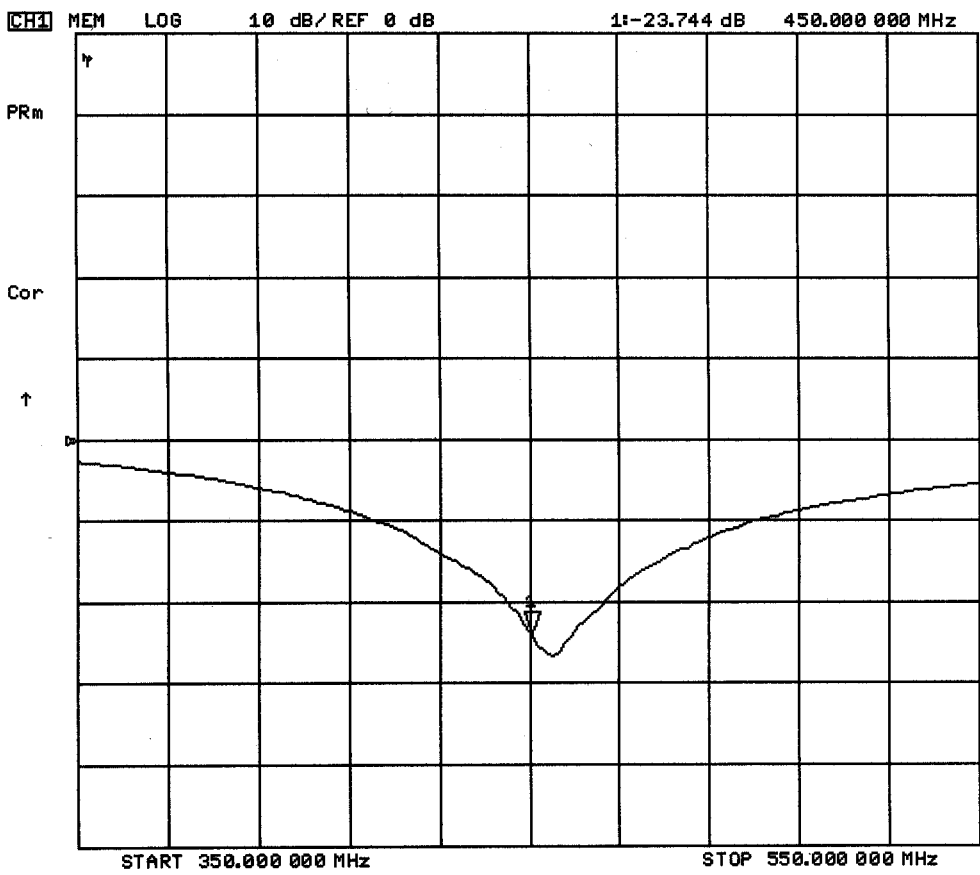
↑



START 350.000 000 MHz

STOP 550.000 000 MHz

4 Nov 2004 09:03:54



2. Validation Dipole Dimensions

Frequency (MHz)	L (mm)	h (mm)	d (mm)
300	420.0	250.0	6.2
450	288.0	167.0	6.2
835	161.0	89.8	3.6
900	149.0	83.3	3.6
1450	89.1	51.7	3.6
1800	72.0	41.7	3.6
1900	68.0	39.5	3.6
2000	64.5	37.5	3.6
2450	51.8	30.6	3.6
3000	41.5	25.0	3.6

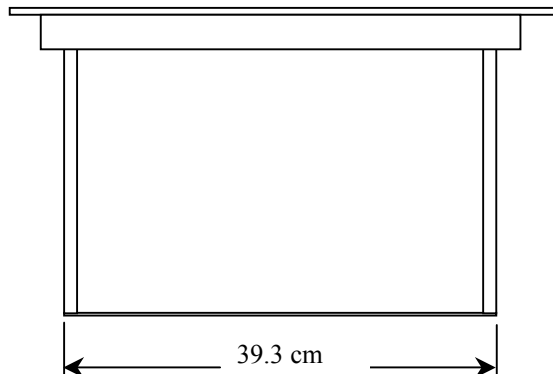
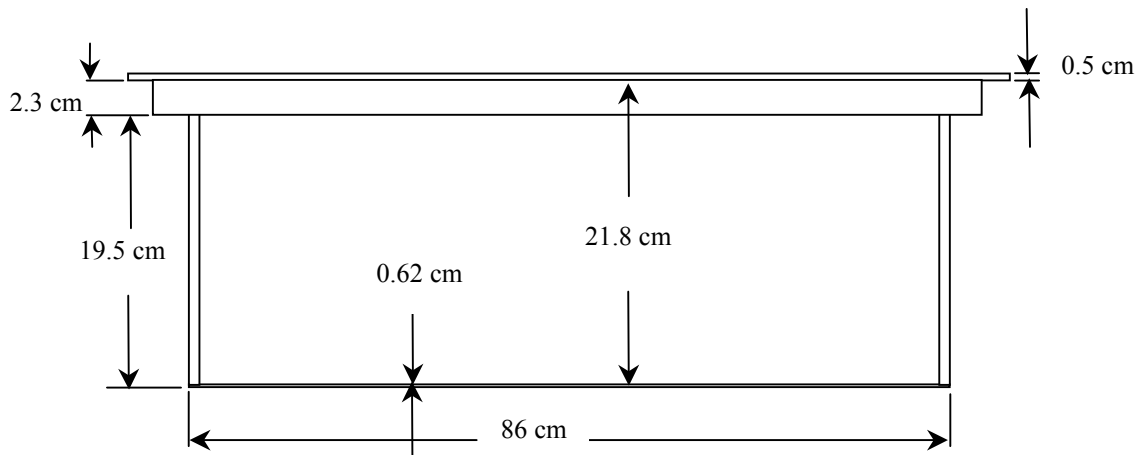
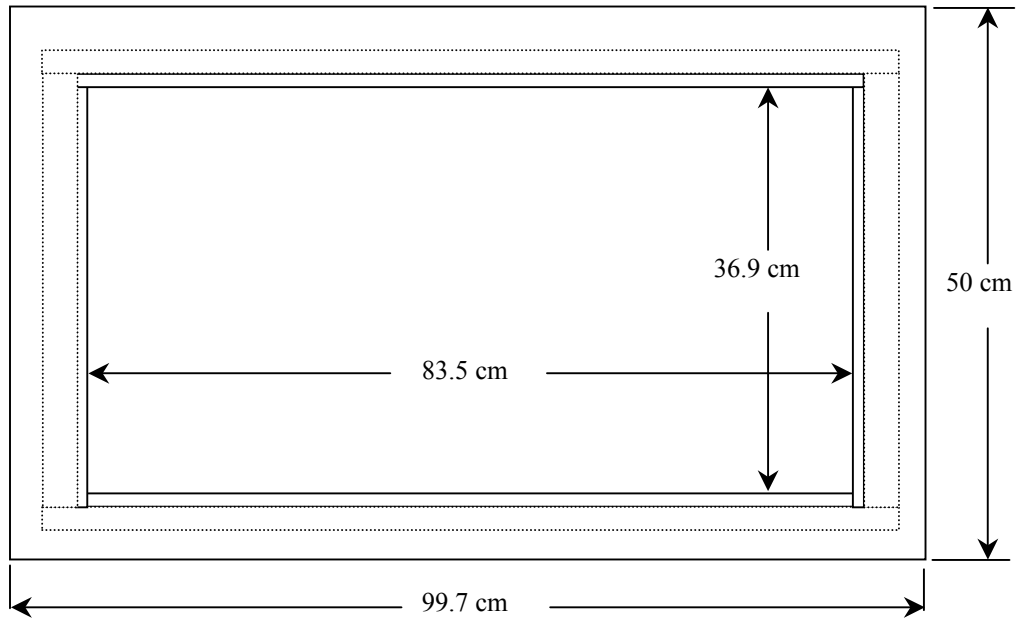
3. Validation Phantom

The validation phantom was constructed using relatively low-loss tangent Plexiglas material. The inner dimensions of the phantom are as follows:

Length: 83.5 cm
 Width: 36.9 cm
 Height: 21.8 cm

The bottom section of the validation phantom is constructed of 6.2 ± 0.1 mm Plexiglas.

4. Dimensions of Plexiglas Planar Phantom



5. 450 MHz System Validation Setup



450 MHz System Validation Setup



6. Measurement Conditions

The planar phantom was filled with brain simulating tissue having the following parameters at 450 MHz:

Relative Permittivity:	42.9
Conductivity:	0.85 mho/m
Fluid Temperature:	21.9 °C
Fluid Depth:	≥ 15.0 cm

Environmental Conditions:

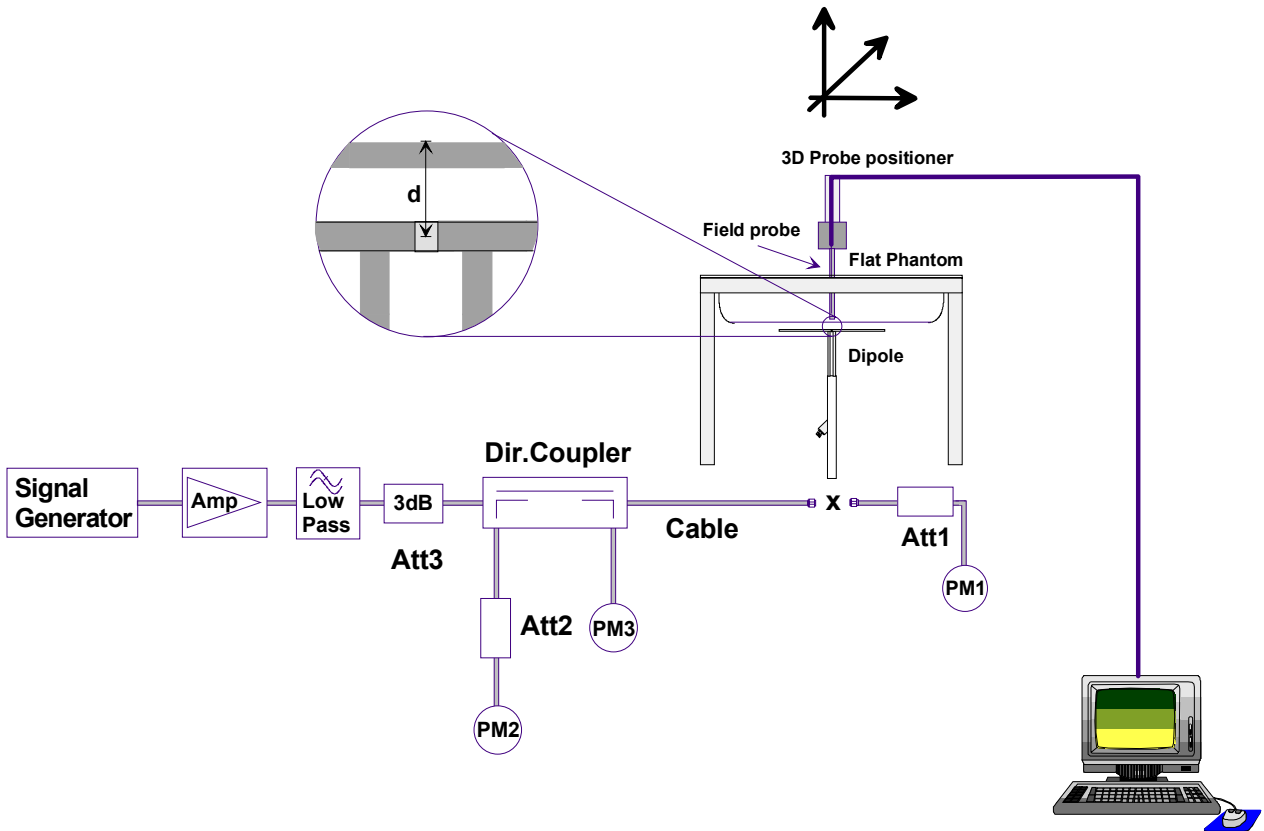
Ambient Temperature:	22.4 °C
Humidity:	31 %
Barometric Pressure:	103.2 kPa

The 450 MHz simulated brain tissue mixture consists of the following ingredients:

Ingredient	Percentage by weight
Water	38.56%
Sugar	56.32%
Salt	3.95%
HEC	0.98%
Dowicil 75	0.19%
450 MHz Target Dielectric Parameters at 22 °C	$\epsilon_r = 43.5$ $\sigma = 0.87 \text{ S/m}$

7. SAR Measurement

The SAR measurement was performed with the E-field probe in mechanical detection mode only. The setup and determination of the forward power into the dipole was performed using the following procedures.



First the power meter PM1 (including attenuator Att1) is connected to the cable to measure the forward power at the location of the dipole connector (X). The signal generator is adjusted for the desired forward power at the dipole connector (taking into account the attenuation of Att1) as read by power meter PM2. After connecting the cable to the dipole, the signal generator is readjusted for the same reading at power meter PM2. If the signal generator does not allow adjustment in 0.01dB steps, the remaining difference at PM2 must be taken into consideration. PM3 records the reflected power from the dipole to ensure that the value is not changed from the previous value. The reflected power should be 20dB below the forward power.

8. Validation Dipole SAR Test Results

Ten SAR measurements were performed in order to achieve repeatability and to establish an average target value.

Validation Measurement	SAR @ 0.25W Input averaged over 1g	SAR @ 1W Input averaged over 1g	SAR @ 0.25W Input averaged over 10g	SAR @ 1W Input averaged over 10g	Peak SAR @ 0.25W Input
Test 1	1.22	4.88	0.782	3.128	1.29
Test 2	1.23	4.92	0.791	3.164	1.30
Test 3	1.23	4.92	0.789	3.156	1.30
Test 4	1.23	4.92	0.790	3.160	1.31
Test 5	1.24	4.96	0.793	3.172	1.31
Test 6	1.24	4.96	0.792	3.168	1.31
Test 7	1.23	4.92	0.791	3.164	1.31
Test 8	1.23	4.92	0.789	3.156	1.30
Test 9	1.24	4.96	0.791	3.164	1.31
Test 10	1.23	4.92	0.789	3.156	1.31
Average Value	1.23	4.93	0.790	3.16	1.31

The results have been normalized to 1W (forward power) into the dipole.

IEEE Target over 1cm³ (1g) of tissue: 1.23 mW/g (+/- 10%)

Averaged over 1cm (1g) of tissue: 4.93 mW/g

Averaged over 10cm (10g) of tissue: 3.16 mW/g

450 MHz System Validation - November 4, 2004

DUT: Dipole 450 MHz; Model: D450V2; Serial: 136; Calibrated: 11/04/2004

Ambient Temp: 22.4 °C; Fluid Temp: 21.9 °C; Barometric Pressure: 103.2 kPa; Humidity: 31%

Communication System: CW

Frequency: 450 MHz; Duty Cycle: 1:1

Medium: HSL450 ($\sigma = 0.85$ mho/m; $\epsilon_r = 42.9$; $\rho = 1000$ kg/m³)

- Probe: ET3DV6 - SN1387; ConvF(7.5, 7.5, 7.5); Calibrated: 18/03/2004

- Sensor-Surface: 4mm (Mechanical Surface Detection)

- Electronics: DAE3 Sn370; Calibrated: 14/05/2004

- Phantom: Validation Planar; Type: Plexiglas; Serial: 137

- Measurement SW: DASY4, V4.3 Build 22; Postprocessing SW: SEMCAD, V1.8 Build 127

450 MHz System Validation/Area Scan (6x11x1): Measurement grid: dx=15mm, dy=15mm

450 MHz System Validation/Zoom Scan (7x7x7)/Cube 0: Measurement grid: dx=5mm, dy=5mm, dz=5mm

Reference Value = 39.3 V/m; Power Drift = -0.1 dB

Peak SAR (extrapolated) = 2.15 W/kg

SAR(1 g) = 1.22 mW/g; SAR(10 g) = 0.782 mW/g

450 MHz System Validation/Zoom Scan 2 (7x7x7)/Cube 0: Measurement grid: dx=5mm, dy=5mm, dz=5mm

Reference Value = 39.2 V/m; Power Drift = -0.0 dB

Peak SAR (extrapolated) = 2.16 W/kg

SAR(1 g) = 1.23 mW/g; SAR(10 g) = 0.791 mW/g

450 MHz System Validation/Zoom Scan 3 (7x7x7)/Cube 0: Measurement grid: dx=5mm, dy=5mm, dz=5mm

Reference Value = 39.1 V/m; Power Drift = -0.004 dB

Peak SAR (extrapolated) = 2.16 W/kg

SAR(1 g) = 1.23 mW/g; SAR(10 g) = 0.789 mW/g

450 MHz System Validation/Zoom Scan 4 (7x7x7)/Cube 0: Measurement grid: dx=5mm, dy=5mm, dz=5mm

Reference Value = 39.2 V/m; Power Drift = -0.0 dB

Peak SAR (extrapolated) = 2.18 W/kg

SAR(1 g) = 1.23 mW/g; SAR(10 g) = 0.790 mW/g

450 MHz System Validation/Zoom Scan 5 (7x7x7)/Cube 0: Measurement grid: dx=5mm, dy=5mm, dz=5mm

Reference Value = 39.2 V/m; Power Drift = 0.009 dB

Peak SAR (extrapolated) = 2.18 W/kg

SAR(1 g) = 1.24 mW/g; SAR(10 g) = 0.793 mW/g

450 MHz System Validation/Zoom Scan 6 (7x7x7)/Cube 0: Measurement grid: dx=5mm, dy=5mm, dz=5mm

Reference Value = 39.1 V/m; Power Drift = 0.007 dB

Peak SAR (extrapolated) = 2.18 W/kg

SAR(1 g) = 1.24 mW/g; SAR(10 g) = 0.792 mW/g

450 MHz System Validation/Zoom Scan 7 (7x7x7)/Cube 0: Measurement grid: dx=5mm, dy=5mm, dz=5mm

Reference Value = 39.2 V/m; Power Drift = 0.004 dB

Peak SAR (extrapolated) = 2.18 W/kg

SAR(1 g) = 1.23 mW/g; SAR(10 g) = 0.791 mW/g

450 MHz System Validation/Zoom Scan 8 (7x7x7)/Cube 0: Measurement grid: dx=5mm, dy=5mm, dz=5mm

Reference Value = 39.2 V/m; Power Drift = 0.0 dB

Peak SAR (extrapolated) = 2.16 W/kg

SAR(1 g) = 1.23 mW/g; SAR(10 g) = 0.789 mW/g

450 MHz System Validation/Zoom Scan 9 (7x7x7)/Cube 0: Measurement grid: dx=5mm, dy=5mm, dz=5mm

Reference Value = 39.4 V/m; Power Drift = 0.0 dB

Peak SAR (extrapolated) = 2.19 W/kg

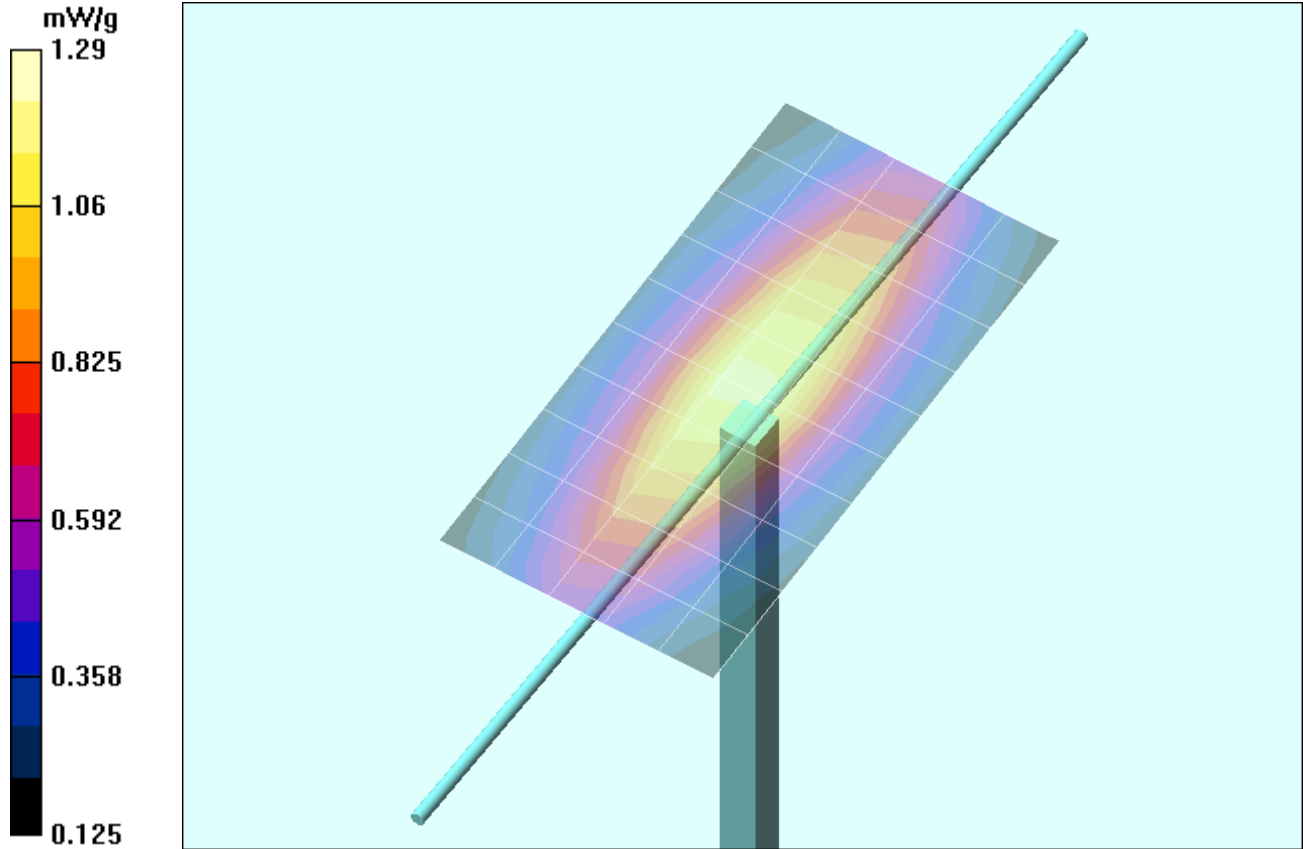
SAR(1 g) = 1.24 mW/g; SAR(10 g) = 0.791 mW/g

450 MHz System Validation/Zoom Scan 10 (7x7x7)/Cube 0: Measurement grid: dx=5mm, dy=5mm, dz=5mm

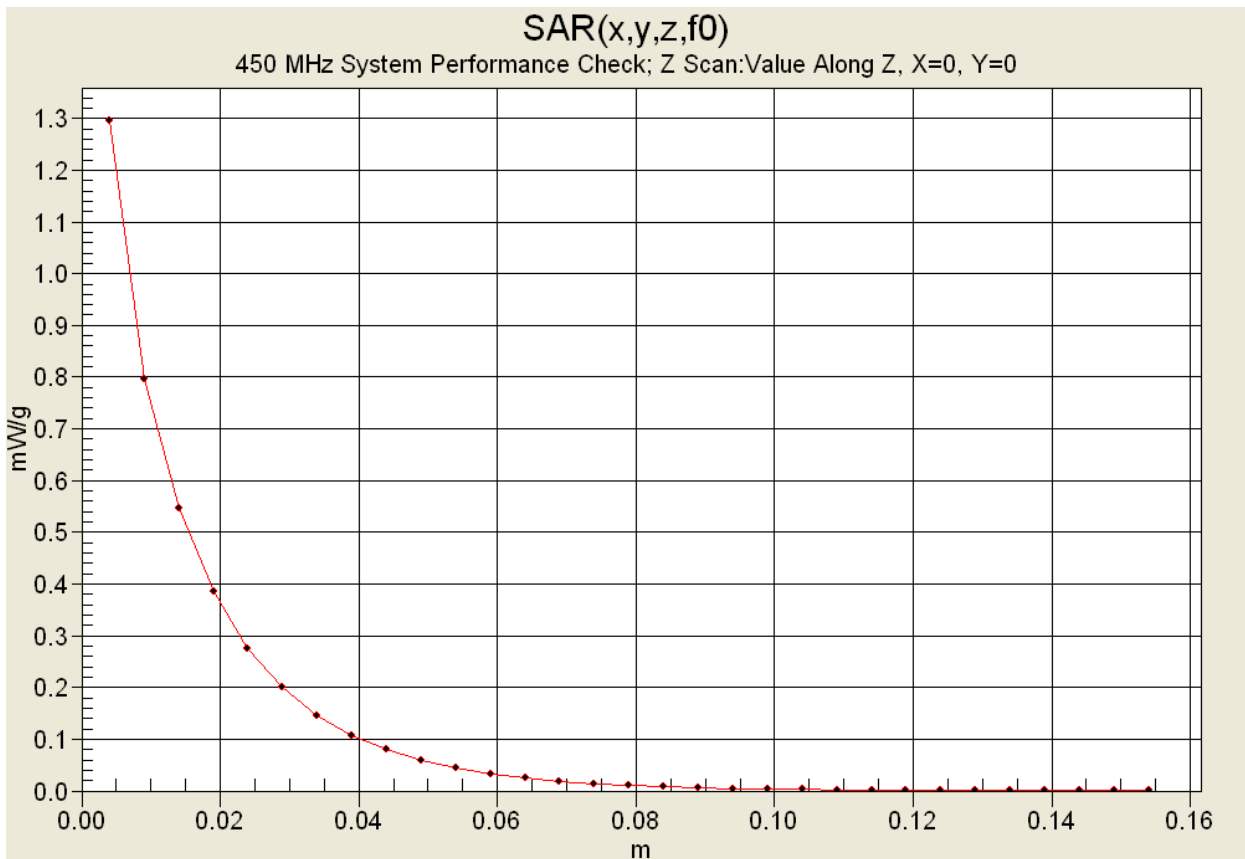
Reference Value = 39.1 V/m; Power Drift = 0.007 dB

Peak SAR (extrapolated) = 2.16 W/kg

SAR(1 g) = 1.23 mW/g; SAR(10 g) = 0.789 mW/g



1 g average of 10 measurements: 1.23 mW/g
10 g average of 10 measurements: 0.790 mW/g



450 MHz System Validation

Measured Fluid Dielectric Parameters (Brain)

November 04, 2004

Frequency	ϵ'	ϵ''
350.000000 MHz	45.3974	39.4988
360.000000 MHz	45.0834	38.7858
370.000000 MHz	44.8651	38.1777
380.000000 MHz	44.6622	37.6103
390.000000 MHz	44.3761	37.1472
400.000000 MHz	44.1745	36.5919
410.000000 MHz	43.8392	36.0417
420.000000 MHz	43.6277	35.5608
430.000000 MHz	43.3443	34.9958
440.000000 MHz	43.1200	34.5629
450.000000 MHz	42.8999	34.1583
460.000000 MHz	42.7154	33.7478
470.000000 MHz	42.4773	33.4083
480.000000 MHz	42.2998	33.0563
490.000000 MHz	42.0302	32.7340
500.000000 MHz	41.8641	32.3576
510.000000 MHz	41.6518	31.9703
520.000000 MHz	41.4863	31.6232
530.000000 MHz	41.2685	31.3144
540.000000 MHz	41.1027	30.8977
550.000000 MHz	40.9455	30.6347

Test Report S/N:	102004ALH-T574-S90U
Test Date(s):	November 04-05, 15-16, 2004
Test Type:	FCC/IC SAR Evaluation

APPENDIX D - PROBE CALIBRATION

Applicant:	Kenwood USA Corporation	FCC ID:	ALH37693110	IC ID:	282D-37693110
Model:	TK-3212-1	Portable FM UHF PTT Radio Transceiver		450 - 490 MHz	KENWOOD
2004 Celltech Labs Inc.		This document is not to be reproduced in whole or in part without the written permission of Celltech Labs Inc.			19 of 21

Client **Celltech**

CALIBRATION CERTIFICATE

Object(s) **ET3DV6 - SN:1387**

Calibration procedure(s) **QA CAL-01.v2
Calibration procedure for dosimetric E-field probes**

Calibration date: **March 18, 2004**



Condition of the calibrated item **In Tolerance (according to the specific calibration document)**

This calibration certificate documents the traceability to national standards, which realize the physical units of measurements (SI).
The measurements and the uncertainties with confidence probability are given on the following pages and are part of the certificate.

All calibrations have been conducted in the closed laboratory facility: environment temperature 22 +/- 2 degrees Celsius and humidity < 75%.

Calibration Equipment used (M&TE critical for calibration)

Model Type	ID #	Cal Date (Calibrated by, Certificate No.)	Scheduled Calibration
Power meter EPM E4419B	GB41293874	2-Apr-03 (METAS, No 252-0250)	Apr-04
Power sensor E4412A	MY41495277	2-Apr-03 (METAS, No 252-0250)	Apr-04
Reference 20 dB Attenuator	SN: 5086 (20b)	3-Apr-03 (METAS, No. 251-0340)	Apr-04
Fluke Process Calibrator Type 702	SN: 6295803	8-Sep-03 (Sintrel SCS No. E-030020)	Sep-04
Power sensor HP 8481A	MY41092180	18-Sep-02 (SPEAG, in house check Oct-03)	In house check: Oct 05
RF generator HP 8684C	US3642U01700	4-Aug-99 (SPEAG, in house check Aug-02)	In house check: Aug-05
Network Analyzer HP 8753E	US37390585	18-Oct-01 (SPEAG, in house check Oct-03)	In house check: Oct 05

	Name	Function	Signature
Calibrated by:	Nico Vetterli	Technician	
Approved by:	Katja Pokovic	Laboratory Director	

Date issued: March 18, 2004

This calibration certificate is issued as an intermediate solution until the accreditation process (based on ISO/IEC 17025 International Standard) for Calibration Laboratory of Schmid & Partner Engineering AG is completed.

Probe ET3DV6

SN:1387

Manufactured:	September 21, 1999
Last calibrated:	February 26, 2003
Recalibrated:	March 18, 2004

Calibrated for DASY Systems

(Note: non-compatible with DASY2 system!)

DASY - Parameters of Probe: ET3DV6 SN:1387

Sensitivity in Free Space

NormX	1.62 $\mu\text{V}/(\text{V}/\text{m})^2$
NormY	1.71 $\mu\text{V}/(\text{V}/\text{m})^2$
NormZ	1.71 $\mu\text{V}/(\text{V}/\text{m})^2$

Diode Compression^A

DCP X	92	mV
DCP Y	92	mV
DCP Z	92	mV

Sensitivity in Tissue Simulating Liquid (Conversion Factors)

Please see Page 7.

Boundary Effect

Head 900 MHz Typical SAR gradient: 5 % per mm

Sensor Cener to Phantom Surface Distance		3.7 mm	4.7 mm
SAR _{be} [%]	Without Correction Algorithm	9.3	4.4
SAR _{be} [%]	With Correction Algorithm	0.0	0.1

Head 1800 MHz Typical SAR gradient: 10 % per mm

Sensor to Surface Distance		3.7 mm	4.7 mm
SAR _{be} [%]	Without Correction Algorithm	14.8	10.0
SAR _{be} [%]	With Correction Algorithm	0.2	0.0

Sensor Offset

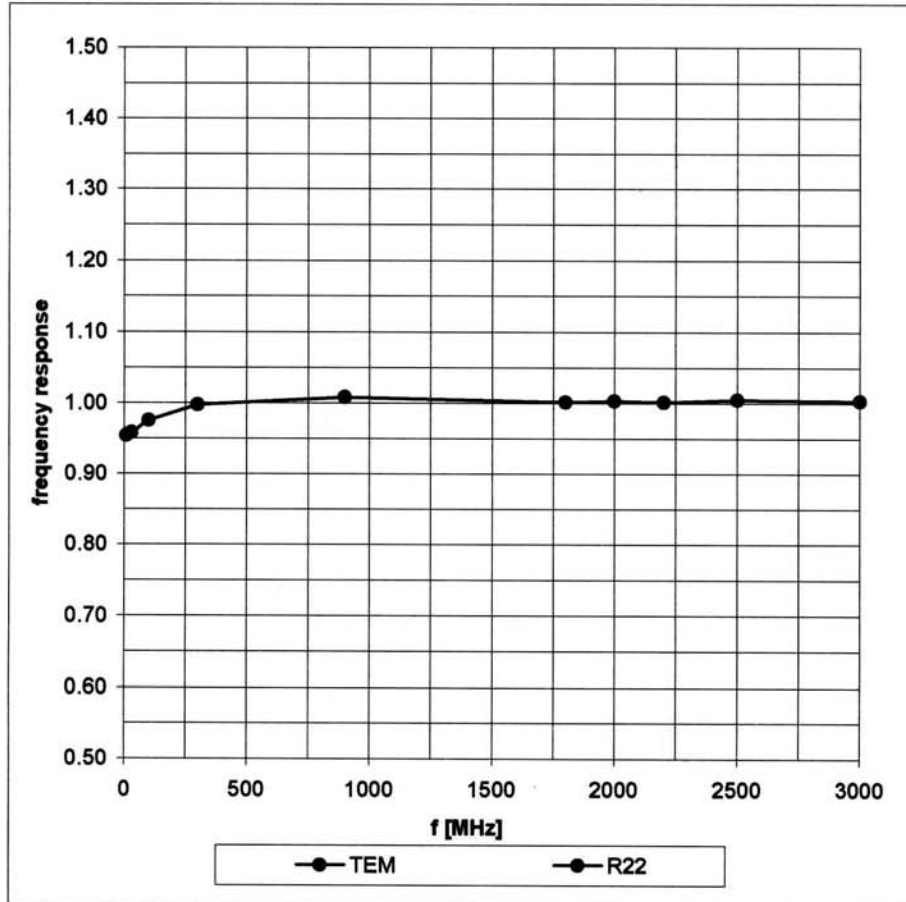
Probe Tip to Sensor Center	2.7 mm
Optical Surface Detection	in tolerance

The reported uncertainty of measurement is stated as the standard uncertainty of measurement multiplied by the coverage factor k=2, which for a normal distribution corresponds to a coverage probability of approximately 95%.

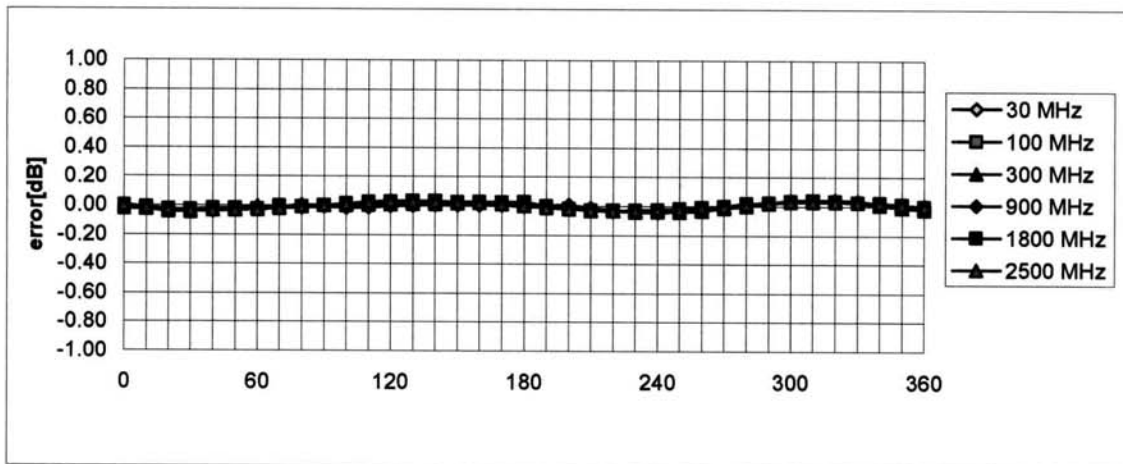
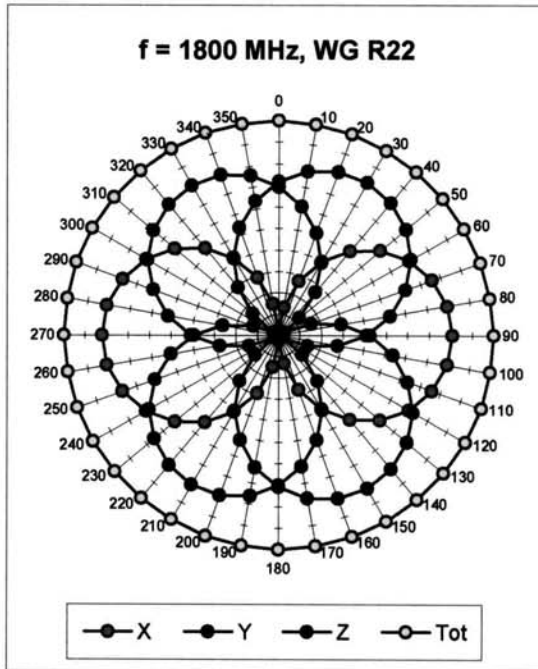
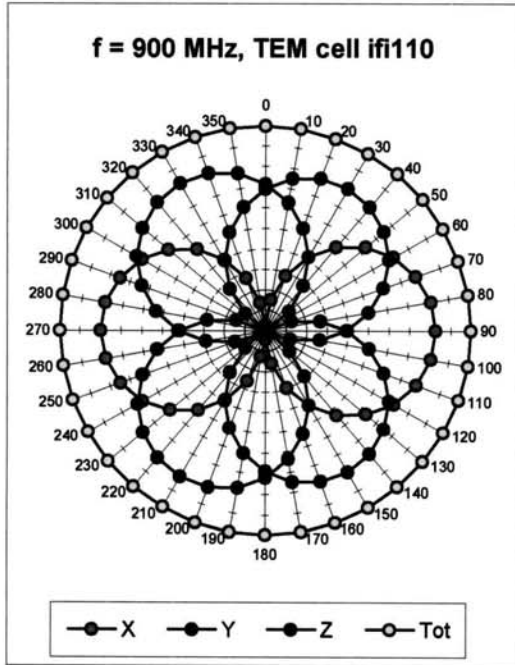
^A numerical linearization parameter: uncertainty not required

Frequency Response of E-Field

(TEM-Cell:ifi110, Waveguide R22)

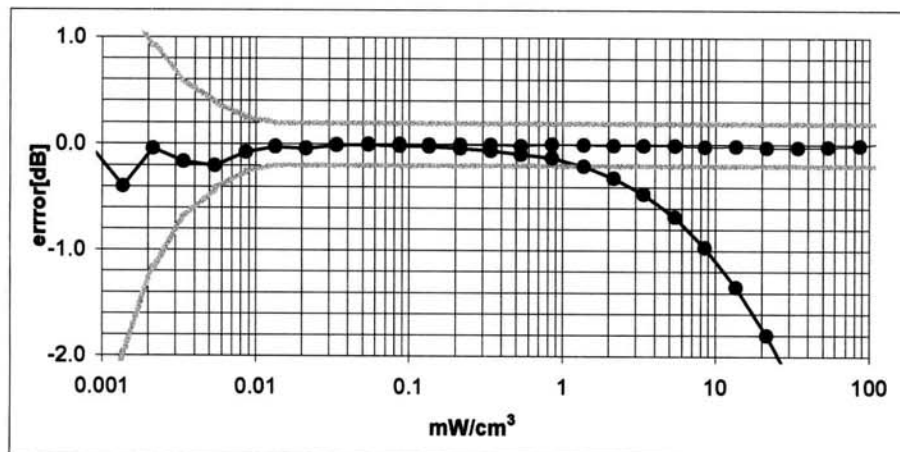
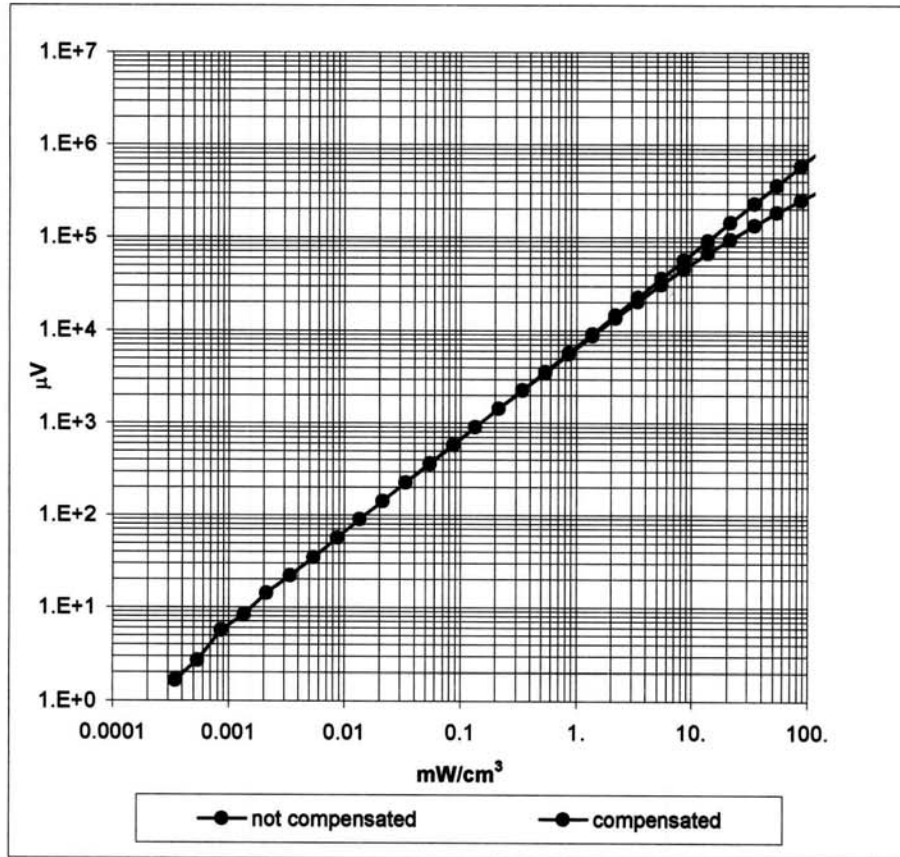


Receiving Pattern (ϕ), $\theta = 0^\circ$



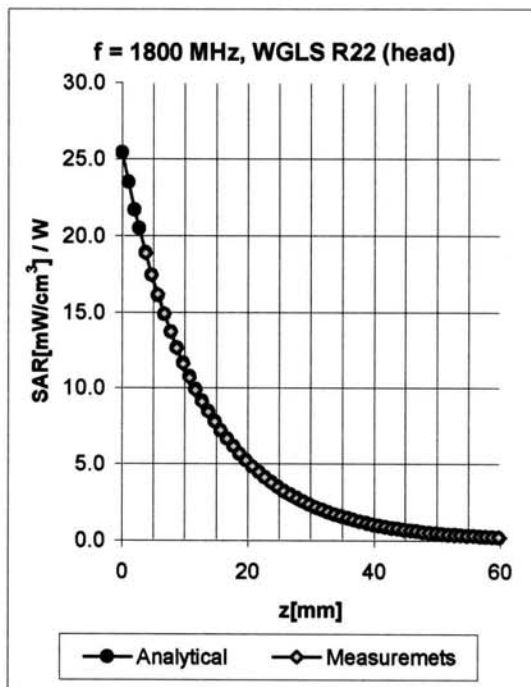
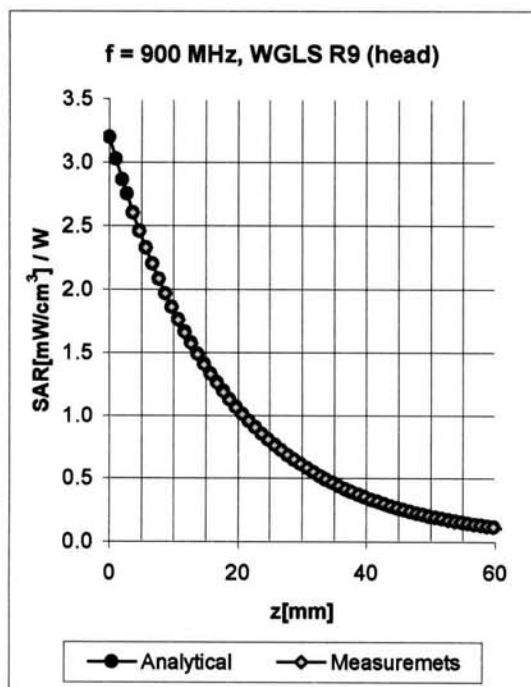
Axial Isotropy Error $\lt; \pm 0.2 \text{ dB}$

Dynamic Range f(SAR_{head}) (Waveguide R22)



Probe Linearity $\pm 0.2\text{ dB}$

Conversion Factor Assessment

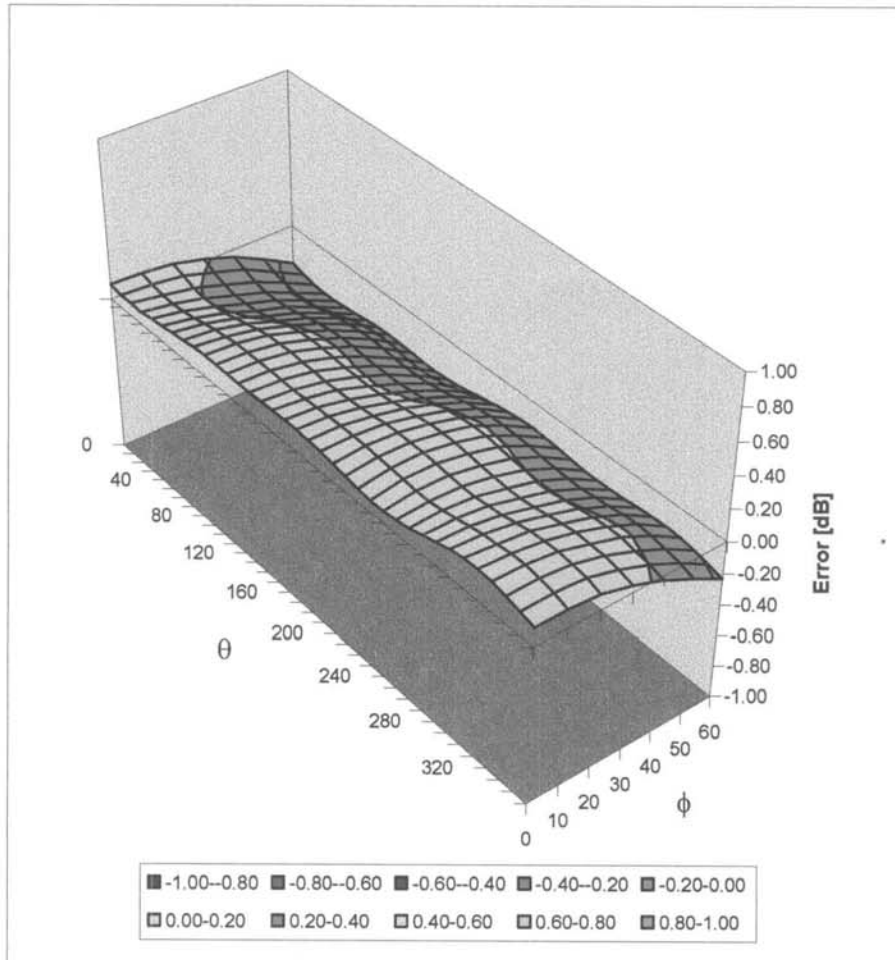


f [MHz]	Validity [MHz] ^B	Tissue	Permittivity	Conductivity	Alpha	Depth	ConvF	Uncertainty
835	750-950	Head	41.5 ± 5%	0.90 ± 5%	0.72	1.78	6.71 ± 11.9%	(k=2)
1750	1700-1800	Head	40.0 ± 5%	1.40 ± 5%	0.51	2.67	5.38 ± 9.7%	(k=2)
1900	1850-1950	Head	40.0 ± 5%	1.40 ± 5%	0.55	2.66	5.25 ± 9.7%	(k=2)
2450	2400-2500	Head	39.2 ± 5%	1.80 ± 5%	0.99	1.89	4.77 ± 9.7%	(k=2)
835	750-950	Body	55.2 ± 5%	0.97 ± 5%	0.56	2.04	6.24 ± 11.9%	(k=2)
1750	1700-1800	Body	53.3 ± 5%	1.52 ± 5%	0.58	2.82	4.68 ± 9.7%	(k=2)
1900	1850-1950	Body	53.3 ± 5%	1.52 ± 5%	0.62	2.77	4.57 ± 9.7%	(k=2)
2450	2400-2500	Body	52.7 ± 5%	1.95 ± 5%	1.75	1.28	4.50 ± 9.7%	(k=2)

^B The total standard uncertainty is calculated as root-sum-square of standard uncertainty of the Conversion Factor at calibration frequency and the standard uncertainty for the indicated frequency band.

Deviation from Isotropy in HSL

Error (θ, ϕ), $f = 900$ MHz



Spherical Isotropy Error <math>\lt; \pm 0.4 dB

Additional Conversion Factors

for Dosimetric E-Field Probe

Type:

ET3DV6

Serial Number:

1387

Place of Assessment:

Zurich

Date of Assessment:

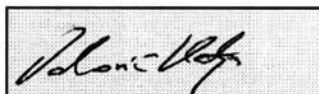
March 22, 2004

Probe Calibration Date:

March 18, 2004

Schmid & Partner Engineering AG hereby certifies that conversion factor(s) of this probe have been evaluated on the date indicated above. The assessment was performed using the FDTD numerical code SEMCAD of Schmid & Partner Engineering AG. Since the evaluation is coupled with measured conversion factors, it has to be recalculated yearly, i.e., following the re-calibration schedule of the probe. The uncertainty of the numerical assessment is based on the extrapolation from measured value at 900 MHz or at 1800 MHz.

Assessed by:



Dosimetric E-Field Probe ET3DV6 SN:1387Conversion factor (\pm standard deviation)

150 MHz	ConvF	9.1 \pm 8%	$\epsilon_r = 52.3 \pm 5\%$ $\sigma = 0.76 \pm 5\%$ mho/m (head tissue)
300 MHz	ConvF	7.8 \pm 8%	$\epsilon_r = 45.3 \pm 5\%$ $\sigma = 0.87 \pm 5\%$ mho/m (head tissue)
450 MHz	ConvF	7.5 \pm 8%	$\epsilon_r = 43.5 \pm 5\%$ $\sigma = 0.87 \pm 5\%$ mho/m (head tissue)
150 MHz	ConvF	8.7 \pm 8%	$\epsilon_r = 61.9 \pm 5\%$ $\sigma = 0.80 \pm 5\%$ mho/m (body tissue)
450 MHz	ConvF	7.6 \pm 8%	$\epsilon_r = 56.7 \pm 5\%$ $\sigma = 0.94 \pm 5\%$ mho/m (body tissue)

Important Note:

For numerically assessed probe conversion factors, parameters Alpha and Delta in the DASY software must have the following entries: Alpha = 0 and Delta = 1.

Please see also Section 4.7 of the DASY4 Manual.

Test Report S/N:	102004ALH-T574-S90U
Test Date(s):	November 04-05, 15-16, 2004
Test Type:	FCC/IC SAR Evaluation

APPENDIX E - MEASURED FLUID DIELECTRIC PARAMETERS

Applicant:	Kenwood USA Corporation	FCC ID:	ALH37693110	IC ID:	282D-37693110
Model:	TK-3212-1	Portable FM UHF PTT Radio Transceiver		450 - 490 MHz	KENWOOD
2004 Celltech Labs Inc.		This document is not to be reproduced in whole or in part without the written permission of Celltech Labs Inc.			20 of 21

450 MHz System Performance Check

Measured Fluid Dielectric Parameters (Brain)

November 04, 2004

Frequency	ϵ'	ϵ''
350.000000 MHz	45.3974	39.4988
360.000000 MHz	45.0834	38.7858
370.000000 MHz	44.8651	38.1777
380.000000 MHz	44.6622	37.6103
390.000000 MHz	44.3761	37.1472
400.000000 MHz	44.1745	36.5919
410.000000 MHz	43.8392	36.0417
420.000000 MHz	43.6277	35.5608
430.000000 MHz	43.3443	34.9958
440.000000 MHz	43.1200	34.5629
450.000000 MHz	42.8999	34.1583
460.000000 MHz	42.7154	33.7478
470.000000 MHz	42.4773	33.4083
480.000000 MHz	42.2998	33.0563
490.000000 MHz	42.0302	32.7340
500.000000 MHz	41.8641	32.3576
510.000000 MHz	41.6518	31.9703
520.000000 MHz	41.4863	31.6232
530.000000 MHz	41.2685	31.3144
540.000000 MHz	41.1027	30.8977
550.000000 MHz	40.9455	30.6347

450 MHz DUT Evaluation (Face)

Measured Fluid Dielectric Parameters (Brain)

November 05, 2004

Frequency	ϵ'	ϵ''
350.000000 MHz	45.0335	39.7104
360.000000 MHz	44.7115	39.0296
370.000000 MHz	44.4371	38.4250
380.000000 MHz	44.2247	37.7787
390.000000 MHz	43.9591	37.2257
400.000000 MHz	43.6680	36.7045
410.000000 MHz	43.3846	36.1472
420.000000 MHz	43.1641	35.6679
430.000000 MHz	42.9092	35.1576
440.000000 MHz	42.6666	34.7265
450.000000 MHz	42.4633	34.3654
460.000000 MHz	42.2530	33.9022
470.000000 MHz	42.0522	33.5653
480.000000 MHz	41.9123	33.1715
490.000000 MHz	41.6955	32.8058
500.000000 MHz	41.4945	32.3848
510.000000 MHz	41.2973	32.0465
520.000000 MHz	41.1092	31.7203
530.000000 MHz	40.9425	31.3868
540.000000 MHz	40.7880	31.0004
550.000000 MHz	40.5923	30.7520

450 MHz System Performance Check

Measured Fluid Dielectric Parameters (Brain)

November 15, 2004

Frequency	ϵ'	ϵ''
350.000000 MHz	45.2836	38.3201
360.000000 MHz	45.0404	37.6526
370.000000 MHz	44.8368	37.1163
380.000000 MHz	44.6807	36.7762
390.000000 MHz	44.4152	36.5007
400.000000 MHz	44.0326	36.0274
410.000000 MHz	43.7591	35.3395
420.000000 MHz	43.5862	34.7295
430.000000 MHz	43.4775	34.1862
440.000000 MHz	43.3187	33.7310
450.000000 MHz	43.1365	33.3271
460.000000 MHz	42.9788	32.9735
470.000000 MHz	42.8002	32.7278
480.000000 MHz	42.4255	32.5247
490.000000 MHz	42.0263	32.1809
500.000000 MHz	41.6662	31.8299
510.000000 MHz	41.4266	31.4246
520.000000 MHz	41.2505	31.1064
530.000000 MHz	41.0745	30.7523
540.000000 MHz	40.9496	30.2523
550.000000 MHz	40.8270	29.9712

450 MHz DUT Evaluation (Body)

Measured Fluid Dielectric Parameters (Muscle)

November 15, 2004

Frequency	ϵ'	ϵ''
350.000000 MHz	58.6276	41.8463
360.000000 MHz	58.4716	41.1160
370.000000 MHz	58.2599	40.4886
380.000000 MHz	58.1326	39.7774
390.000000 MHz	57.9377	39.0897
400.000000 MHz	57.7796	38.4485
410.000000 MHz	57.6285	37.8139
420.000000 MHz	57.4473	37.3142
430.000000 MHz	57.2206	36.7953
440.000000 MHz	57.0931	36.2891
450.000000 MHz	56.8790	35.8492
460.000000 MHz	56.7544	35.4373
470.000000 MHz	56.5782	35.0152
480.000000 MHz	56.4034	34.6092
490.000000 MHz	56.2420	34.2335
500.000000 MHz	56.1026	33.8496
510.000000 MHz	55.9712	33.4774
520.000000 MHz	55.8351	33.1360
530.000000 MHz	55.6753	32.8118
540.000000 MHz	55.5596	32.3748
550.000000 MHz	55.4183	32.1176

450 MHz System Performance Check

Measured Fluid Dielectric Parameters (Brain)

November 16, 2004

Frequency	ϵ'	ϵ''
350.000000 MHz	44.6233	38.3205
360.000000 MHz	44.3243	37.7100
370.000000 MHz	44.0301	37.1102
380.000000 MHz	43.8279	36.6066
390.000000 MHz	43.5004	36.0498
400.000000 MHz	43.3603	35.5377
410.000000 MHz	43.1040	35.0254
420.000000 MHz	42.8549	34.5567
430.000000 MHz	42.6546	34.0838
440.000000 MHz	42.4107	33.6483
450.000000 MHz	42.2108	33.2540
460.000000 MHz	42.0394	32.8727
470.000000 MHz	41.8200	32.5420
480.000000 MHz	41.6052	32.1282
490.000000 MHz	41.2714	31.7854
500.000000 MHz	41.0895	31.4671
510.000000 MHz	40.8949	31.1305
520.000000 MHz	40.7039	30.8719
530.000000 MHz	40.5058	30.5286
540.000000 MHz	40.3926	30.1363
550.000000 MHz	40.1799	29.8683

450 MHz DUT Evaluation (Body)

Measured Fluid Dielectric Parameters (Muscle)

November 16, 2004

Frequency	ϵ'	ϵ''
350.000000 MHz	59.2234	41.8205
360.000000 MHz	59.0098	41.0489
370.000000 MHz	58.8112	40.3138
380.000000 MHz	58.6682	39.6606
390.000000 MHz	58.4616	39.1037
400.000000 MHz	58.2950	38.4807
410.000000 MHz	58.1597	37.8797
420.000000 MHz	57.9786	37.3844
430.000000 MHz	57.7942	36.8316
440.000000 MHz	57.6360	36.3748
450.000000 MHz	57.4201	35.9294
460.000000 MHz	57.3081	35.4902
470.000000 MHz	57.1210	35.0650
480.000000 MHz	57.0010	34.6240
490.000000 MHz	56.8340	34.1916
500.000000 MHz	56.7113	33.8521
510.000000 MHz	56.5651	33.4615
520.000000 MHz	56.3902	33.1415
530.000000 MHz	56.3012	32.7715
540.000000 MHz	56.1662	32.3998
550.000000 MHz	56.0396	32.1421