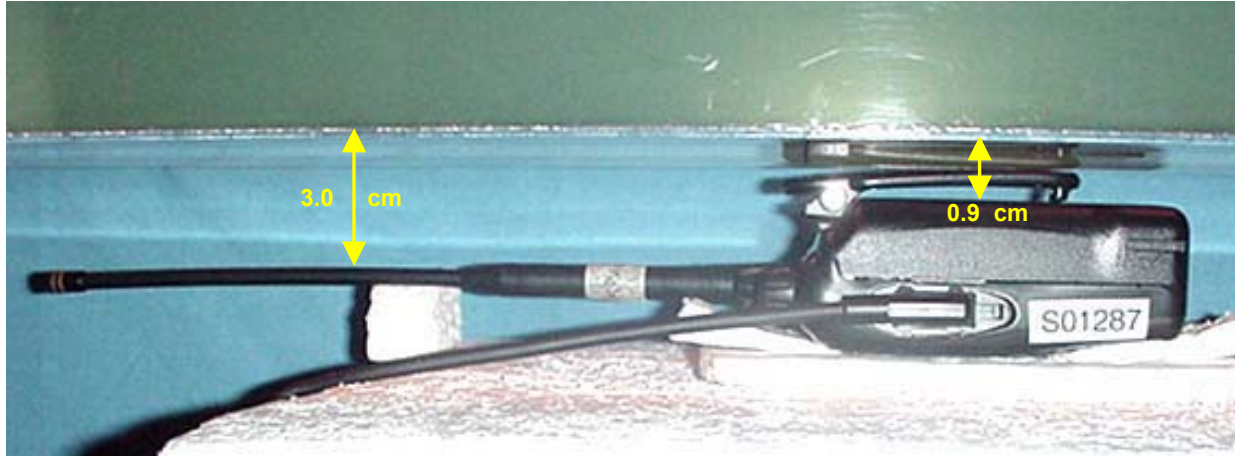


BODY-WORN SAR TEST SETUP PHOTOGRAPHS
1.4 cm Belt-Clip Separation Distance from Battery to Planar Phantom
with Long Whip Antenna (P/N: KRA-25), Li-ion Battery, & Speaker-Microphone Accessory



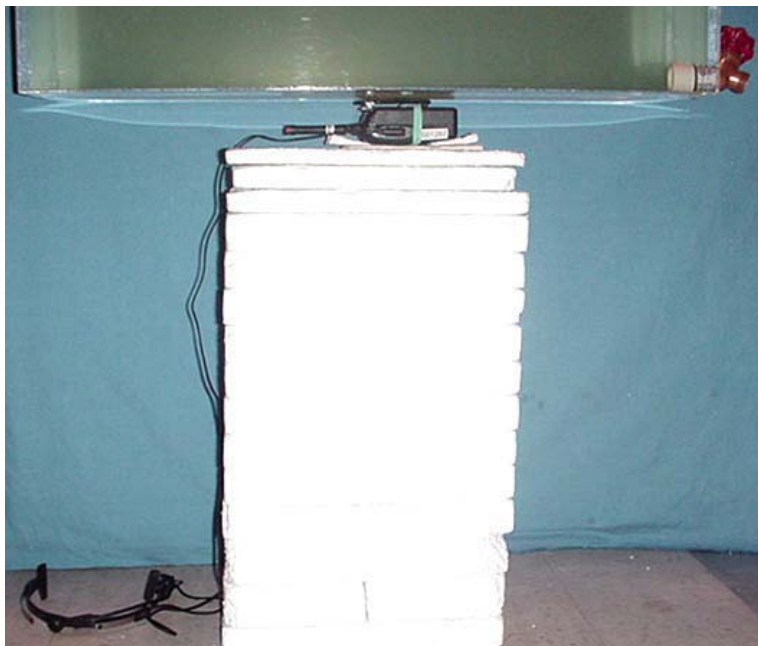
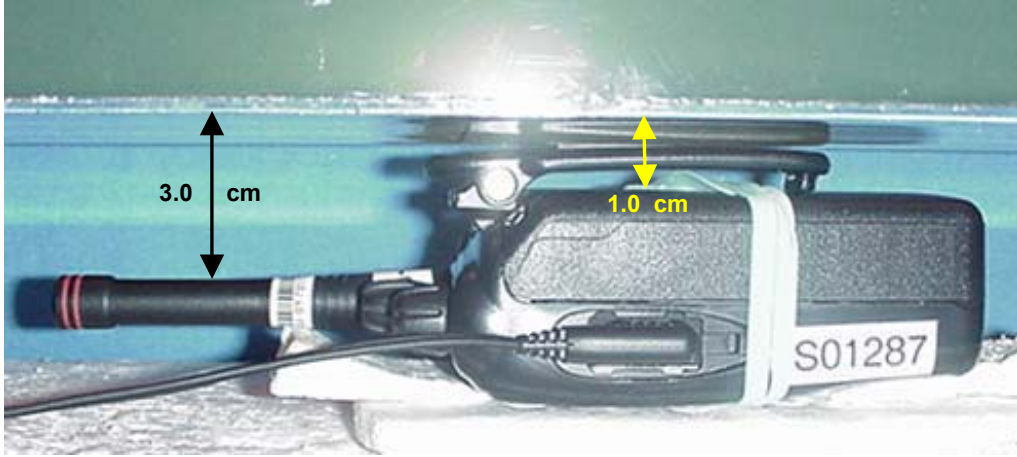
| | | | | | |
|--|-------------------------|---------------------------------------|-------------|---------------|----------------|
| Applicant: | Kenwood USA Corporation | FCC ID: | ALH34703110 | IC ID: | 282D-34703110 |
| Model: | TK-2170-K / TK-2170-K2 | Portable FM VHF PTT Radio Transceiver | | 136 - 174 MHz | KENWOOD |
| 2004 Celltech Labs Inc. This document is not to be reproduced in whole or in part without the written permission of Celltech Labs Inc. | | | | | |

BODY-WORN SAR TEST SETUP PHOTOGRAPHS
0.9 cm Belt-Clip Separation Distance from Battery to Planar Phantom
with Long Whip Antenna (P/N: KRA-25), NiCd / NiMH Battery, & Speaker-Microphone Accessory



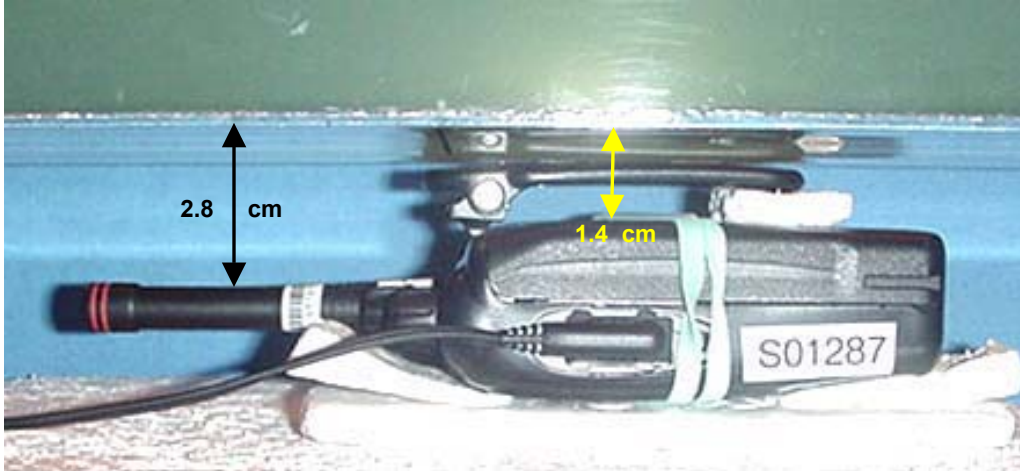
| | | | | | |
|-------------------------|-------------------------|--|-------------|---------------|----------------|
| Applicant: | Kenwood USA Corporation | FCC ID: | ALH34703110 | IC ID: | 282D-34703110 |
| Model: | TK-2170-K / TK-2170-K2 | Portable FM VHF PTT Radio Transceiver | | 136 - 174 MHz | KENWOOD |
| 2004 Celltech Labs Inc. | | This document is not to be reproduced in whole or in part without the written permission of Celltech Labs Inc. | | | |

BODY-WORN SAR TEST SETUP PHOTOGRAPHS
 1.0 cm Belt-Clip Separation Distance from Battery to Planar Phantom
 with Stubby Antenna (P/N: KRA-16M), Alkaline Battery Pack, & Boom-Mic Headset Accessory



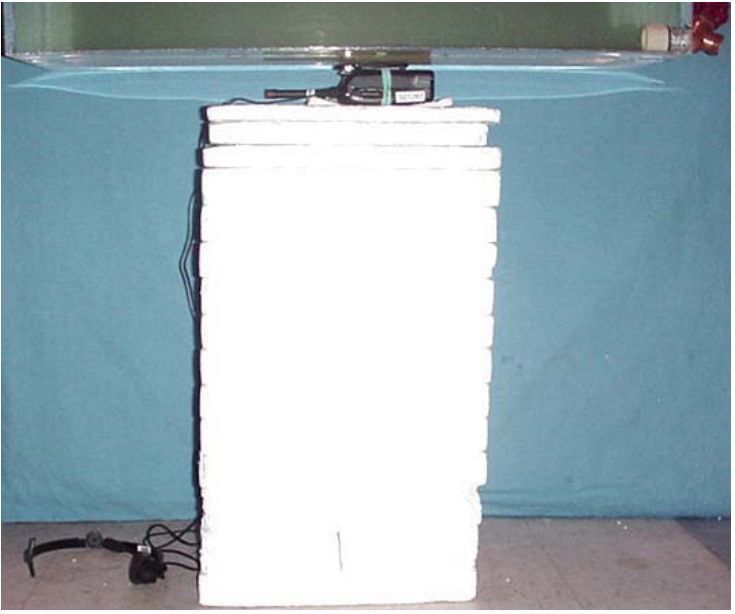
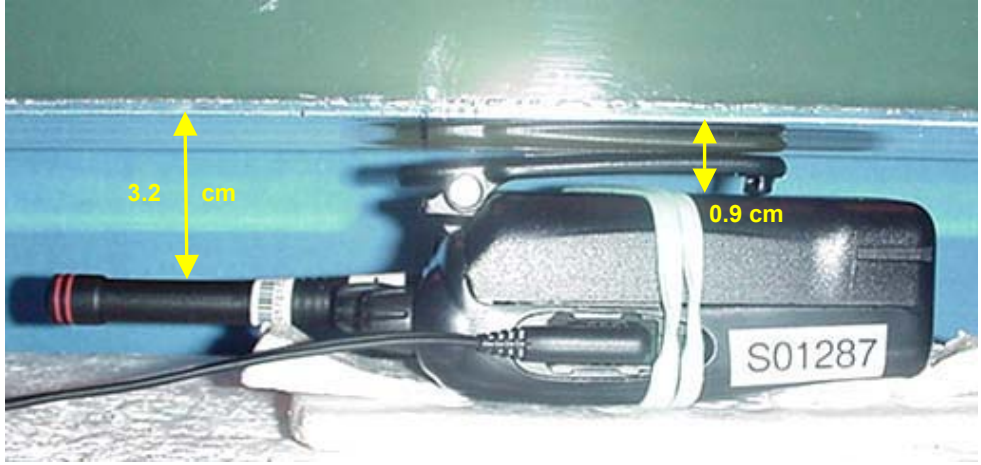
| | | | | | |
|--|-------------------------|---------------------------------------|-------------|---------------|----------------|
| Applicant: | Kenwood USA Corporation | FCC ID: | ALH34703110 | IC ID: | 282D-34703110 |
| Model: | TK-2170-K / TK-2170-K2 | Portable FM VHF PTT Radio Transceiver | | 136 - 174 MHz | KENWOOD |
| 2004 Celltech Labs Inc. This document is not to be reproduced in whole or in part without the written permission of Celltech Labs Inc. | | | | | |

BODY-WORN SAR TEST SETUP PHOTOGRAPHS
1.4 cm Belt-Clip Separation Distance from Battery to Planar Phantom
with Stubby Antenna (P/N: KRA-16M), Li-ion Battery, & Boom-Mic Headset Accessory



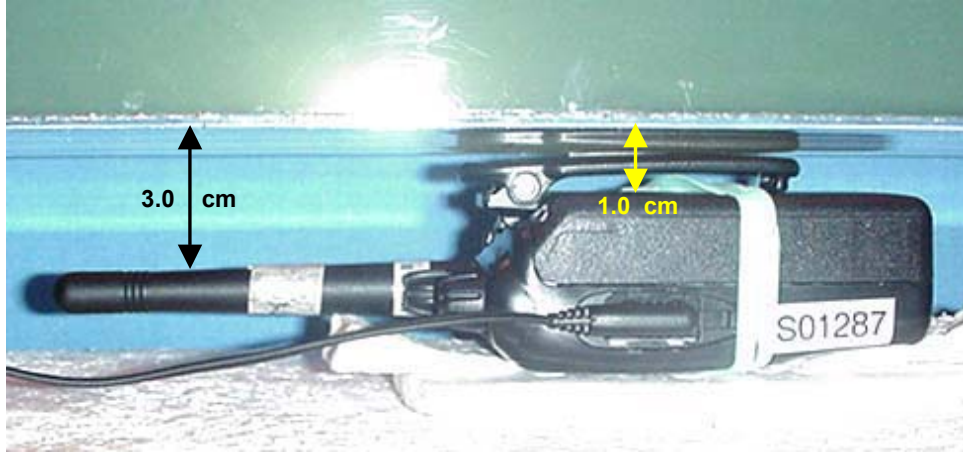
| | | | | | |
|--|--------------------------------|--|----------------------|----------------|----------------------|
| Applicant: | Kenwood USA Corporation | FCC ID: | ALH34703110 | IC ID: | 282D-34703110 |
| Model: | TK-2170-K / TK-2170-K2 | Portable FM VHF PTT Radio Transceiver | 136 - 174 MHz | KENWOOD | |
| 2004 Celltech Labs Inc. This document is not to be reproduced in whole or in part without the written permission of Celltech Labs Inc. | | | | | |

BODY-WORN SAR TEST SETUP PHOTOGRAPHS
 0.9 cm Belt-Clip Separation Distance from Battery to Planar Phantom
 with Stubby Antenna (P/N: KRA-16M), NiCd / NiMH Battery, & Boom-Mic Headset Accessory



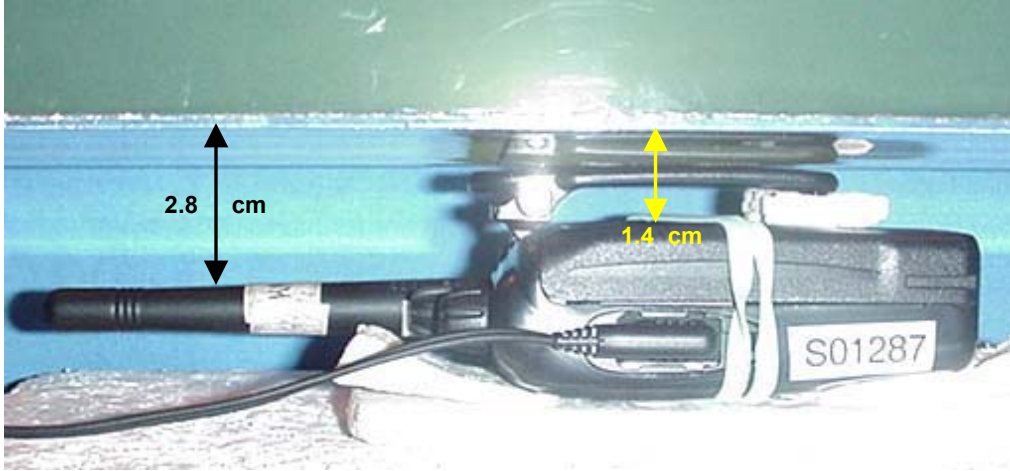
| | | | | | |
|--|-------------------------|---------------------------------------|-------------|---------------|----------------|
| Applicant: | Kenwood USA Corporation | FCC ID: | ALH34703110 | IC ID: | 282D-34703110 |
| Model: | TK-2170-K / TK-2170-K2 | Portable FM VHF PTT Radio Transceiver | | 136 - 174 MHz | KENWOOD |
| 2004 Celltech Labs Inc. This document is not to be reproduced in whole or in part without the written permission of Celltech Labs Inc. | | | | | |

BODY-WORN SAR TEST SETUP PHOTOGRAPHS
 1.0 cm Belt-Clip Separation Distance from Battery to Planar Phantom
 with Stubby Antenna (P/N: KRA-22M/M2/M3), Alkaline Battery Pack, & Boom-Mic Headset Accessory



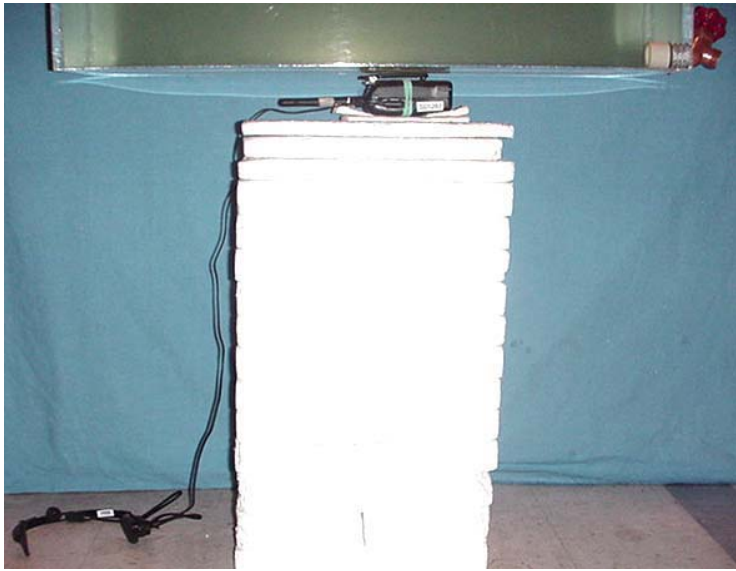
| | | | | | |
|--|-------------------------|---------------------------------------|-------------|---------------|----------------|
| Applicant: | Kenwood USA Corporation | FCC ID: | ALH34703110 | IC ID: | 282D-34703110 |
| Model: | TK-2170-K / TK-2170-K2 | Portable FM VHF PTT Radio Transceiver | | 136 - 174 MHz | KENWOOD |
| 2004 Celltech Labs Inc. This document is not to be reproduced in whole or in part without the written permission of Celltech Labs Inc. | | | | | |

BODY-WORN SAR TEST SETUP PHOTOGRAPHS
 1.4 cm Belt-Clip Separation Distance from Battery to Planar Phantom
 with Stubby Antenna (P/N: KRA-22M/M2/M3), Li-ion Battery, & Boom-Mic Headset Accessory



| | | | | | |
|--|--------------------------------|--|----------------------|----------------|----------------------|
| Applicant: | Kenwood USA Corporation | FCC ID: | ALH34703110 | IC ID: | 282D-34703110 |
| Model: | TK-2170-K / TK-2170-K2 | Portable FM VHF PTT Radio Transceiver | 136 - 174 MHz | KENWOOD | |
| 2004 Celltech Labs Inc. This document is not to be reproduced in whole or in part without the written permission of Celltech Labs Inc. | | | | | |

BODY-WORN SAR TEST SETUP PHOTOGRAPHS
0.9 cm Belt-Clip Separation Distance from Battery to Planar Phantom
with Stubby Antenna (P/N: KRA-22M/M2/M3), NiCd / NiMH Battery, & Headset Accessory



| | | | | | |
|--|-------------------------|---------------------------------------|-------------|---------------|----------------|
| Applicant: | Kenwood USA Corporation | FCC ID: | ALH34703110 | IC ID: | 282D-34703110 |
| Model: | TK-2170-K / TK-2170-K2 | Portable FM VHF PTT Radio Transceiver | | 136 - 174 MHz | KENWOOD |
| 2004 Celltech Labs Inc. This document is not to be reproduced in whole or in part without the written permission of Celltech Labs Inc. | | | | | |

BODY-WORN SAR TEST SETUP PHOTOGRAPHS
 1.0 cm Belt-Clip Separation Distance from Battery to Planar Phantom
 with Whip Antenna (P/N: KRA-26M/M2/M3), Alkaline Battery Pack, & Boom-Mic Headset Accessory



| | | | | | |
|--|-------------------------|---------------------------------------|-------------|---------------|----------------|
| Applicant: | Kenwood USA Corporation | FCC ID: | ALH34703110 | IC ID: | 282D-34703110 |
| Model: | TK-2170-K / TK-2170-K2 | Portable FM VHF PTT Radio Transceiver | | 136 - 174 MHz | KENWOOD |
| 2004 Celltech Labs Inc. This document is not to be reproduced in whole or in part without the written permission of Celltech Labs Inc. | | | | | |

BODY-WORN SAR TEST SETUP PHOTOGRAPHS
 1.4 cm Belt-Clip Separation Distance from Battery to Planar Phantom
 with Whip Antenna (P/N: KRA-26M/M2/M3), Li-ion Battery, & Boom-Mic Headset Accessory



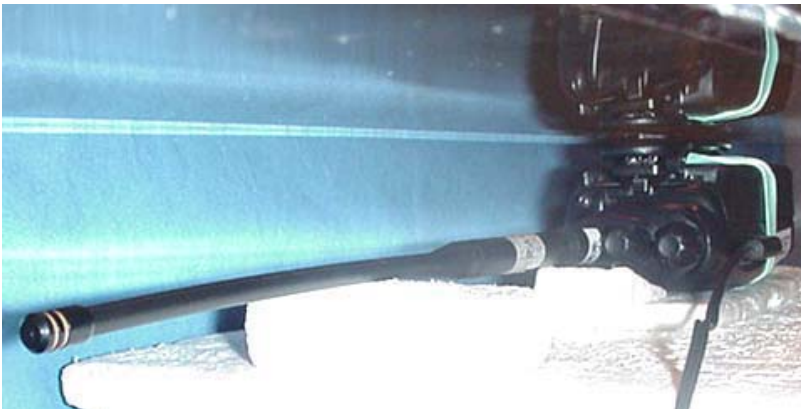
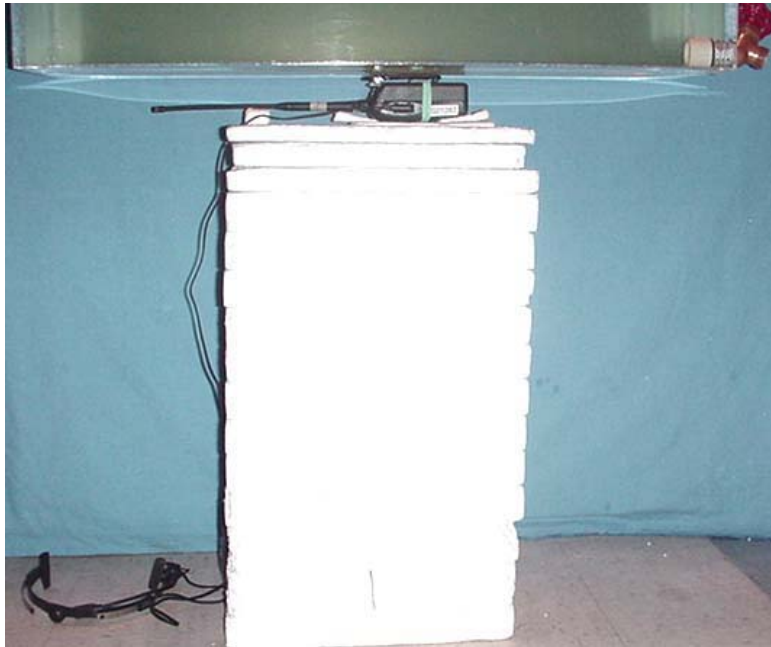
| | | | | | |
|--|-------------------------|---------------------------------------|-------------|---------------|----------------|
| Applicant: | Kenwood USA Corporation | FCC ID: | ALH34703110 | IC ID: | 282D-34703110 |
| Model: | TK-2170-K / TK-2170-K2 | Portable FM VHF PTT Radio Transceiver | | 136 - 174 MHz | KENWOOD |
| 2004 Celltech Labs Inc. This document is not to be reproduced in whole or in part without the written permission of Celltech Labs Inc. | | | | | |

BODY-WORN SAR TEST SETUP PHOTOGRAPHS
 0.9 cm Belt-Clip Separation Distance from Battery to Planar Phantom
 with Whip Antenna (P/N: KRA-26M/M2/M3), NiCd / NiMH Battery, & Boom-Mic Headset Accessory



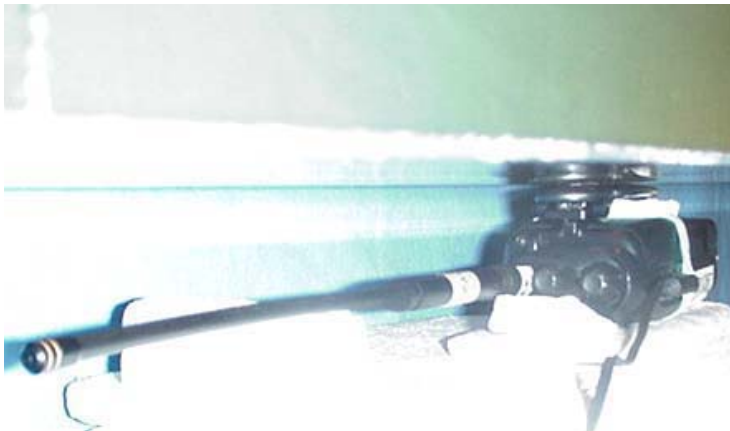
| | | | | | |
|--|-------------------------|---------------------------------------|-------------|---------------|----------------|
| Applicant: | Kenwood USA Corporation | FCC ID: | ALH34703110 | IC ID: | 282D-34703110 |
| Model: | TK-2170-K / TK-2170-K2 | Portable FM VHF PTT Radio Transceiver | | 136 - 174 MHz | KENWOOD |
| 2004 Celltech Labs Inc. This document is not to be reproduced in whole or in part without the written permission of Celltech Labs Inc. | | | | | |

BODY-WORN SAR TEST SETUP PHOTOGRAPH
1.0 cm Belt-Clip Separation Distance from Battery to Planar Phantom
with Long Whip Antenna (P/N: KRA-25), Alkaline Battery Pack, & Boom-Mic Headset Accessory



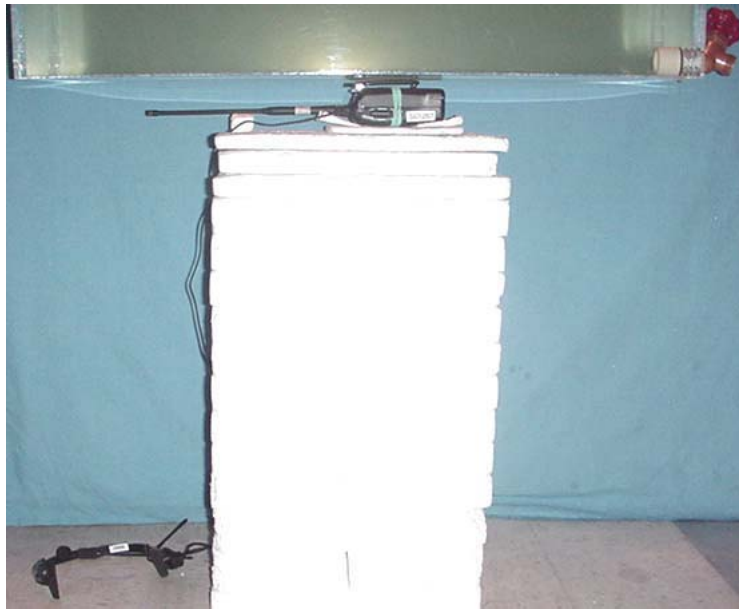
| | | | | | |
|--|--------------------------------|--|----------------------|----------------|----------------------|
| Applicant: | Kenwood USA Corporation | FCC ID: | ALH34703110 | IC ID: | 282D-34703110 |
| Model: | TK-2170-K / TK-2170-K2 | Portable FM VHF PTT Radio Transceiver | 136 - 174 MHz | KENWOOD | |
| 2004 Celltech Labs Inc. This document is not to be reproduced in whole or in part without the written permission of Celltech Labs Inc. | | | | | |

BODY-WORN SAR TEST SETUP PHOTOGRAPHS
 1.4 cm Belt-Clip Separation Distance from Battery to Planar Phantom
 with Long Whip Antenna (P/N: KRA-25), Li-ion Battery, & Boom-Mic Headset Accessory



| | | | | | |
|-------------------------|-------------------------|--|-------------|---------------|----------------|
| Applicant: | Kenwood USA Corporation | FCC ID: | ALH34703110 | IC ID: | 282D-34703110 |
| Model: | TK-2170-K / TK-2170-K2 | Portable FM VHF PTT Radio Transceiver | | 136 - 174 MHz | KENWOOD |
| 2004 Celltech Labs Inc. | | This document is not to be reproduced in whole or in part without the written permission of Celltech Labs Inc. | | | |

BODY-WORN SAR TEST SETUP PHOTOGRAPHS
0.9 cm Belt-Clip Separation Distance from Battery to Planar Phantom
with Long Whip Antenna (P/N: KRA-25), NiCd / NiMH Battery, & Boom-Mic Headset Accessory



| | | | | | |
|-------------------------|--------------------------------|--|----------------------|----------------|----------------------|
| Applicant: | Kenwood USA Corporation | FCC ID: | ALH34703110 | IC ID: | 282D-34703110 |
| Model: | TK-2170-K / TK-2170-K2 | Portable FM VHF PTT Radio Transceiver | 136 - 174 MHz | KENWOOD | |
| 2004 Celltech Labs Inc. | | This document is not to be reproduced in whole or in part without the written permission of Celltech Labs Inc. | | | |

SAR TEST SETUP PHOTOGRAPHS



Face-Held Configuration



Body-Worn Configuration

| | | | | | |
|-------------------------|--------------------------------|--|----------------------|----------------|----------------------|
| Applicant: | Kenwood USA Corporation | FCC ID: | ALH34703110 | IC ID: | 282D-34703110 |
| Model: | TK-2170-K / TK-2170-K2 | Portable FM VHF PTT Radio Transceiver | 136 - 174 MHz | KENWOOD | |
| 2004 Celltech Labs Inc. | | This document is not to be reproduced in whole or in part without the written permission of Celltech Labs Inc. | | | |

DUT PHOTOGRAPHS



Front of DUT
Stubby Antenna
(P/N: KRA-22M/M2/M3)



Front of DUT
Whip Antenna
(P/N: KRA-26M/M2/M3)



Front of DUT
Long Whip Antenna
(P/N: KRA-25)

| | | | | | |
|-------------------------|-------------------------|--|-------------|---------------|----------------|
| Applicant: | Kenwood USA Corporation | FCC ID: | ALH34703110 | IC ID: | 282D-34703110 |
| Model: | TK-2170-K / TK-2170-K2 | Portable FM VHF PTT Radio Transceiver | | 136 - 174 MHz | KENWOOD |
| 2004 Celltech Labs Inc. | | This document is not to be reproduced in whole or in part without the written permission of Celltech Labs Inc. | | | |

DUT PHOTOGRAPHS



**Front of DUT
Stubby Antenna
(P/N: KRA-16M)**



**Front of DUT
Stubby Antenna
(P/N: KRA-16M3)**



**Front of DUT
Stubby Antenna
(P/N: KRA-16M2)**

DUT PHOTOGRAPHS



Back of DUT with Li-ion Battery



Back of DUT with NiCd / NiMH Battery



Back of DUT with Alkaline Battery Pack



Back of DUT with Belt-Clip Li-ion Battery



Back of DUT with Belt-Clip NiCd / NiMH Battery



Back of DUT with Belt-Clip Alkaline Battery Pack

| | | | | | |
|--|-------------------------|---------------------------------------|-------------|---------------|----------------|
| Applicant: | Kenwood USA Corporation | FCC ID: | ALH34703110 | IC ID: | 282D-34703110 |
| Model: | TK-2170-K / TK-2170-K2 | Portable FM VHF PTT Radio Transceiver | | 136 - 174 MHz | KENWOOD |
| 2004 Celltech Labs Inc. This document is not to be reproduced in whole or in part without the written permission of Celltech Labs Inc. | | | | | |

DUT PHOTOGRAPHS



**Bottom of DUT
with Li-ion Battery**



**Bottom of DUT
with NiCd / NiMH Battery**



**Bottom of DUT
with Alkaline Battery Pack**



Top of DUT

| | | | | | |
|-------------------------|--------------------------------|--|----------------------|----------------|----------------------|
| Applicant: | Kenwood USA Corporation | FCC ID: | ALH34703110 | IC ID: | 282D-34703110 |
| Model: | TK-2170-K / TK-2170-K2 | Portable FM VHF PTT Radio Transceiver | 136 - 174 MHz | KENWOOD | |
| 2004 Celltech Labs Inc. | | This document is not to be reproduced in whole or in part without the written permission of Celltech Labs Inc. | | | |

DUT PHOTOGRAPHS



Left Side of DUT with Li-ion Battery & Belt-Clip accessory



Right Side of DUT with Li-ion Battery & Belt-Clip accessory



Belt-Clip accessory (P/N: KBH-12) with Li-ion Battery
(Plastic with metal spring)

| | | | | | |
|-------------------------|-------------------------|--|-------------|---------------|----------------|
| Applicant: | Kenwood USA Corporation | FCC ID: | ALH34703110 | IC ID: | 282D-34703110 |
| Model: | TK-2170-K / TK-2170-K2 | Portable FM VHF PTT Radio Transceiver | | 136 - 174 MHz | KENWOOD |
| 2004 Celltech Labs Inc. | | This document is not to be reproduced in whole or in part without the written permission of Celltech Labs Inc. | | | |

DUT PHOTOGRAPHS



Left Side of DUT with NiCd / NiMH Battery & Belt-Clip accessory



Right Side of DUT with NiCd / NiMH Battery & Belt-Clip accessory



Belt-Clip accessory (P/N: KBH-12) with NiCd / NiMH Battery
(Plastic with metal spring)

| | | | | | |
|-------------------------|--------------------------------|--|----------------------|----------------|----------------------|
| Applicant: | Kenwood USA Corporation | FCC ID: | ALH34703110 | IC ID: | 282D-34703110 |
| Model: | TK-2170-K / TK-2170-K2 | Portable FM VHF PTT Radio Transceiver | 136 - 174 MHz | KENWOOD | |
| 2004 Celltech Labs Inc. | | This document is not to be reproduced in whole or in part without the written permission of Celltech Labs Inc. | | | |

DUT PHOTOGRAPHS



Left Side of DUT with Alkaline Battery Pack & Belt-Clip accessory



Right Side of DUT with Alkaline Battery Pack & Belt-Clip accessory



Belt-Clip accessory (P/N: KBH-12) with Alkaline Battery Pack
(Plastic with metal spring)

| | | | | | |
|-------------------------|-------------------------|--|-------------|---------------|----------------|
| Applicant: | Kenwood USA Corporation | FCC ID: | ALH34703110 | IC ID: | 282D-34703110 |
| Model: | TK-2170-K / TK-2170-K2 | Portable FM VHF PTT Radio Transceiver | | 136 - 174 MHz | KENWOOD |
| 2004 Celltech Labs Inc. | | This document is not to be reproduced in whole or in part without the written permission of Celltech Labs Inc. | | | |

DUT PHOTOGRAPHS



DUT Battery Compartment



**Li-ion Battery
(P/N: KNB-24L)**



**Li-ion Battery
(P/N: KNB-35L)**



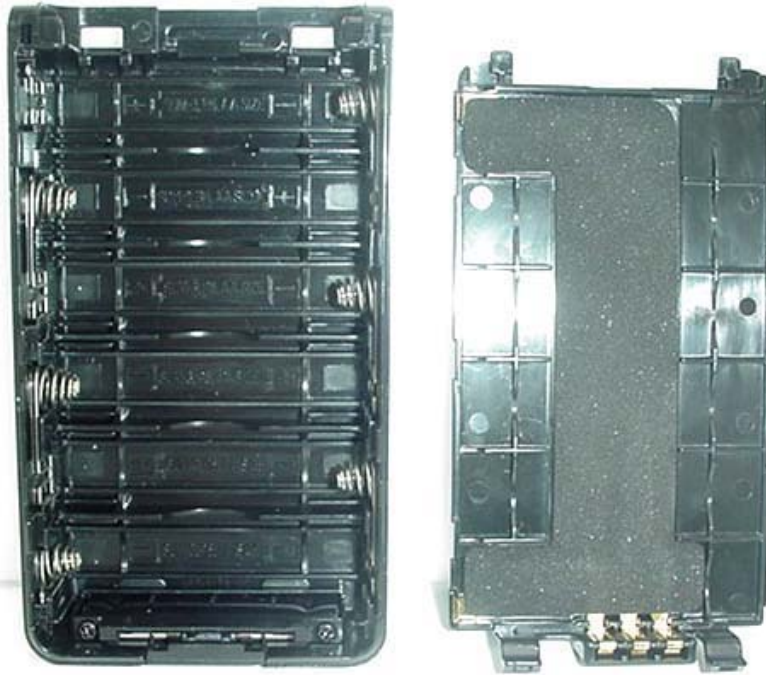
**NiCd Battery
(P/N: KNB-25A)**



**NiMH Battery
(P/N: KNB-26N)**

| | | | | | |
|--|--------------------------------|--|----------------------|----------------|----------------------|
| Applicant: | Kenwood USA Corporation | FCC ID: | ALH34703110 | IC ID: | 282D-34703110 |
| Model: | TK-2170-K / TK-2170-K2 | Portable FM VHF PTT Radio Transceiver | 136 - 174 MHz | KENWOOD | |
| 2004 Celltech Labs Inc. This document is not to be reproduced in whole or in part without the written permission of Celltech Labs Inc. | | | | | |

DUT PHOTOGRAPHS



Alkaline Battery Case (P/N: KBP-5)



Duracell Procell Alkaline Batteries
(Battery Case P/N: KBP-5)



Energizer E91 Alkaline Batteries
(Battery Case P/N: KBP-5)

| | | | | | |
|--|-------------------------|---------------------------------------|-------------|---------------|----------------|
| Applicant: | Kenwood USA Corporation | FCC ID: | ALH34703110 | IC ID: | 282D-34703110 |
| Model: | TK-2170-K / TK-2170-K2 | Portable FM VHF PTT Radio Transceiver | | 136 - 174 MHz | KENWOOD |
| 2004 Celltech Labs Inc. This document is not to be reproduced in whole or in part without the written permission of Celltech Labs Inc. | | | | | |

DUT PHOTOGRAPHS



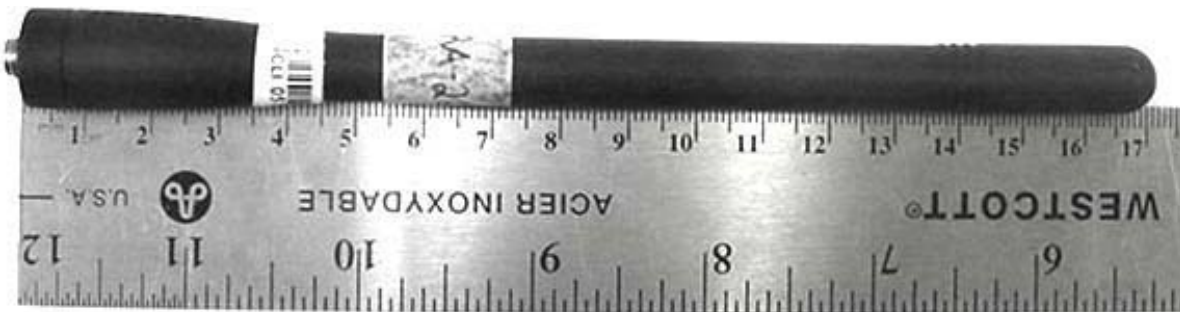
NiCd / NiMH Battery

Alkaline Battery Pack

Li-ion Battery



Stubby Antenna (P/N: KRA-22M/M2/M3)



Whip Antenna (P/N: KRA-26M/M2/M3)



Long Whip Antenna (P/N: KRA-25)

| | | | | | |
|--|-------------------------|---------------------------------------|-------------|---------------|----------------|
| Applicant: | Kenwood USA Corporation | FCC ID: | ALH34703110 | IC ID: | 282D-34703110 |
| Model: | TK-2170-K / TK-2170-K2 | Portable FM VHF PTT Radio Transceiver | | 136 - 174 MHz | KENWOOD |
| 2004 Celltech Labs Inc. This document is not to be reproduced in whole or in part without the written permission of Celltech Labs Inc. | | | | | |

DUT PHOTOGRAPHS



Stubby Antenna (P/N: KRA-16M)



Stubby Antenna (P/N: KRA-16M3)



Stubby Antenna (P/N: KRA-16M2)

| | | | | | |
|--|-------------------------|---------------------------------------|-------------|---------------|----------------|
| Applicant: | Kenwood USA Corporation | FCC ID: | ALH34703110 | IC ID: | 282D-34703110 |
| Model: | TK-2170-K / TK-2170-K2 | Portable FM VHF PTT Radio Transceiver | | 136 - 174 MHz | KENWOOD |
| 2004 Celltech Labs Inc. This document is not to be reproduced in whole or in part without the written permission of Celltech Labs Inc. | | | | | |

DUT PHOTOGRAPHS



**DUT with Speaker-Microphone Accessory
(P/N: KMC-17)**



**DUT with Boom-Mic Headset Accessory
(P/N: KHS-21)**