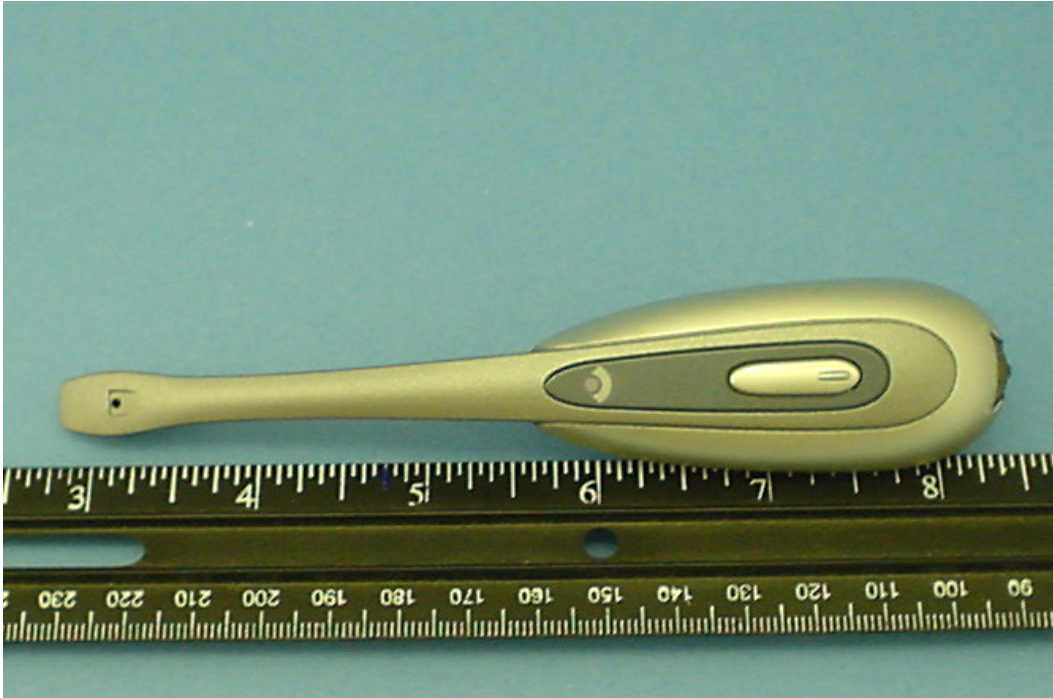
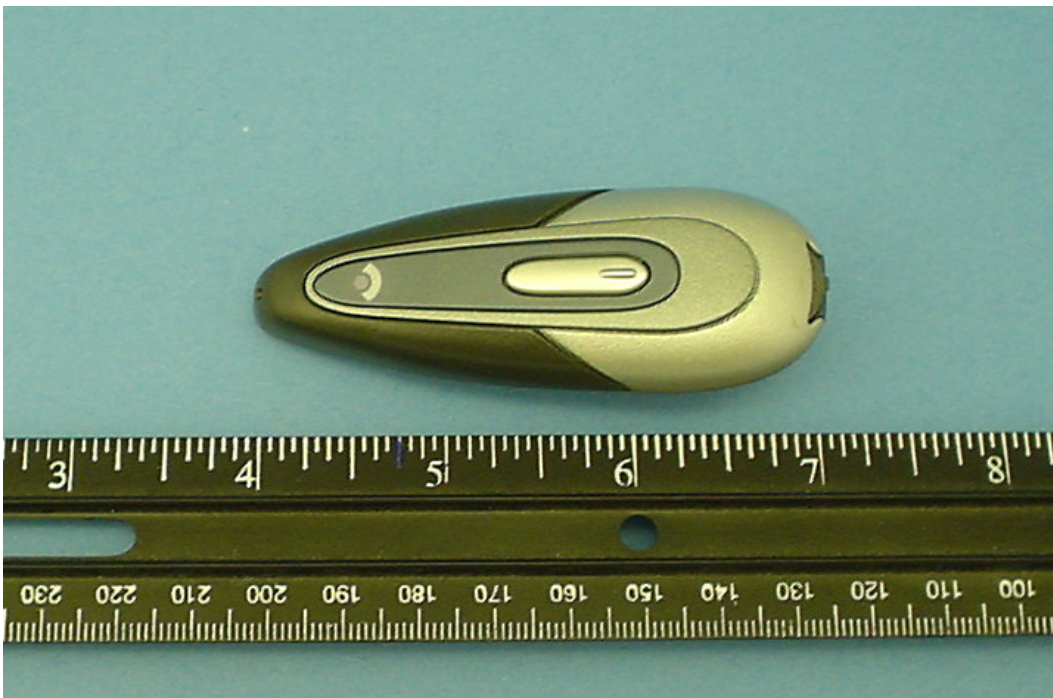


AL8CS55YYYY external photographs in support of FCC filing  
S. Cahill, Oct. 31<sup>st</sup>, 2005



AL8CS55YYYY, microphone mounted in long-mount position



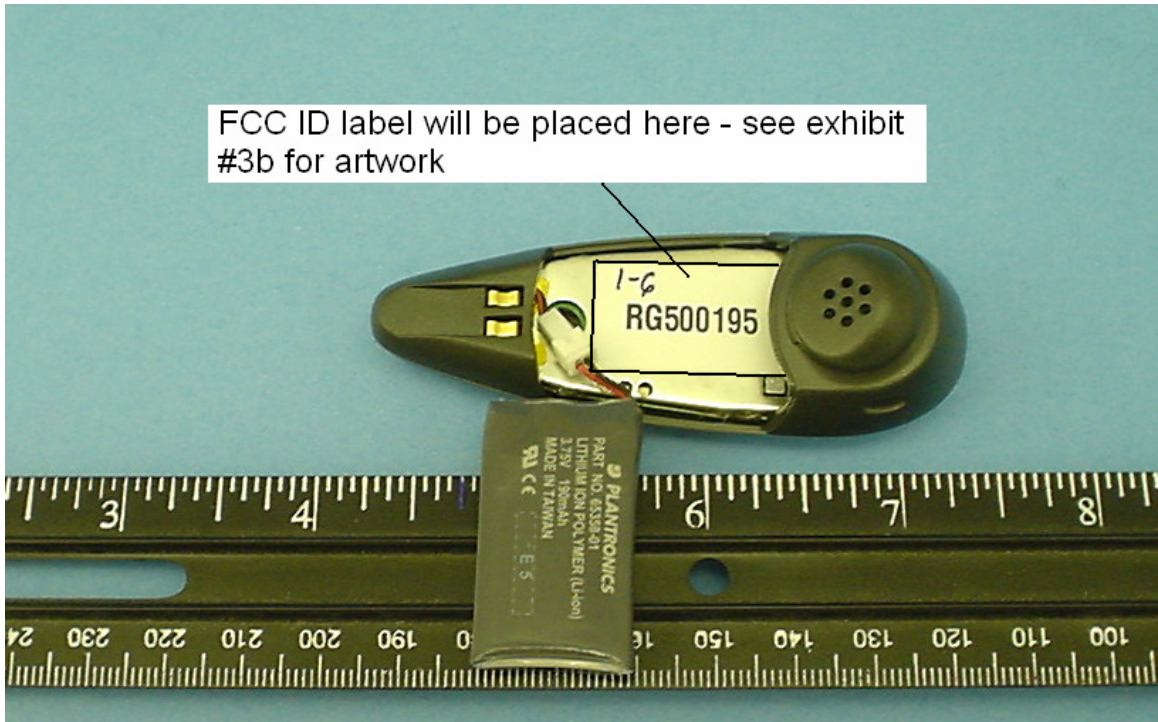
AL8CS55YYYY, microphone mounted in short-mount position



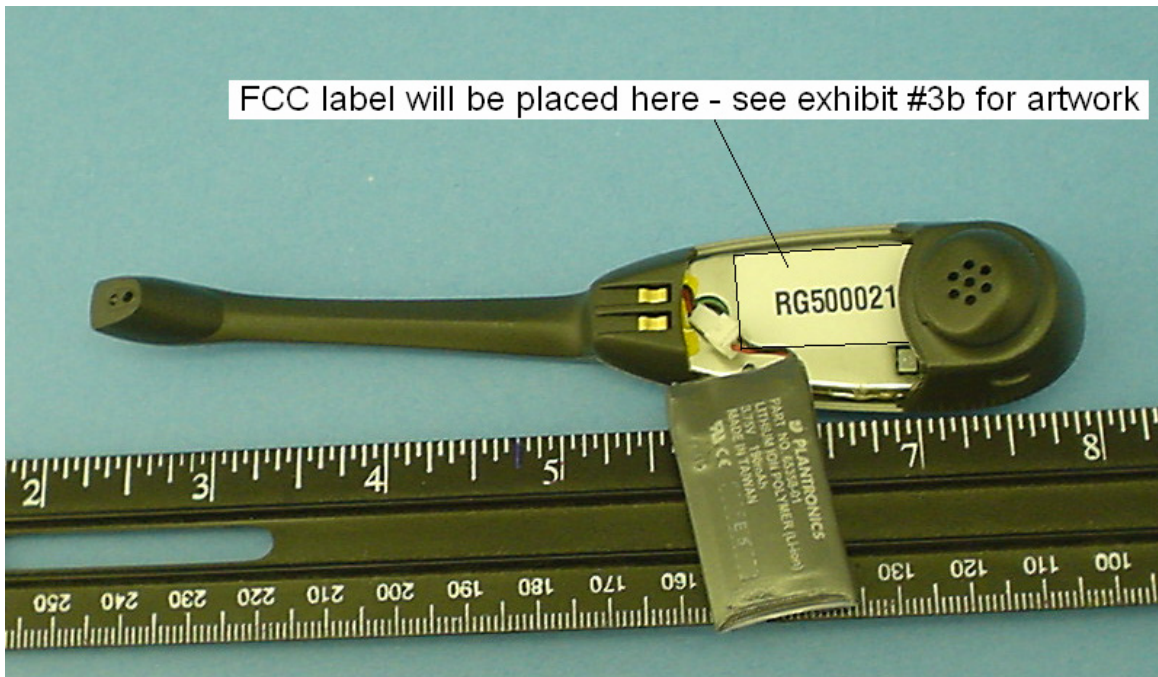
AL8CS55YYYY, reverse side, unit with microphone mounted in long-mount position



AL8CS55YYYY, reverse side, unit with microphone mounted in short-mount position



AL8CS55YYYY, short-mounted microphone, with battery door open to show position that FCC ID label will use.



AL8CS55YYYY, long-mounted microphone, with battery door open to show position that FCC ID label will use.