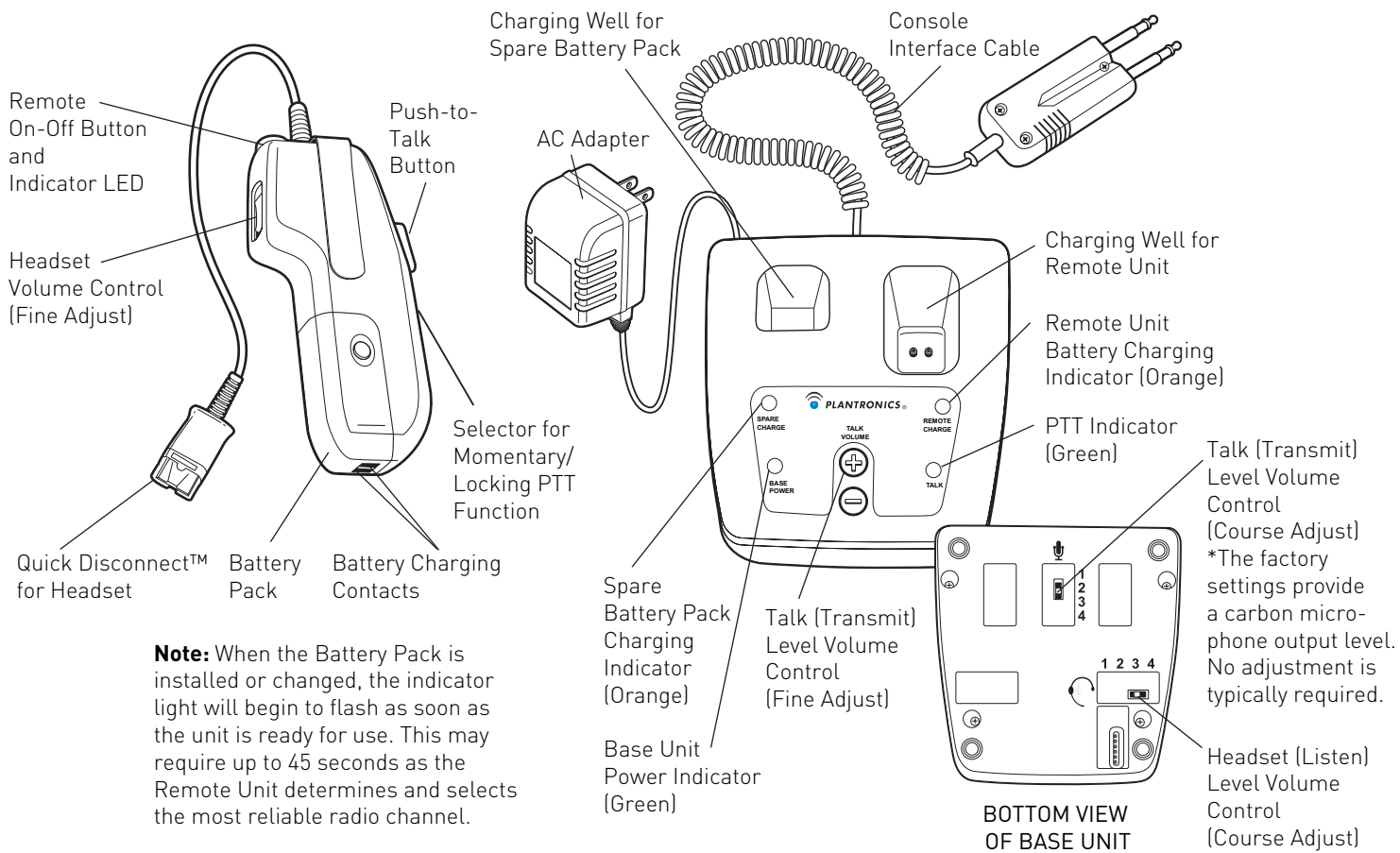


CA12CD

Push-to-Talk Headset Amplifier

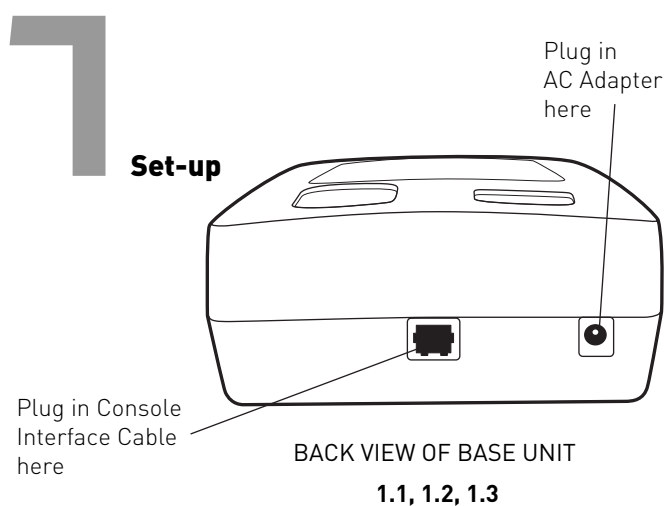
COMPONENTS OF THE CA12CD



Note: When the Battery Pack is installed or changed, the indicator light will begin to flash as soon as the unit is ready for use. This may require up to 45 seconds as the Remote Unit determines and selects the most reliable radio channel.

REMOTE UNIT

BASE UNIT



- 1.1 Set up the CA12CD Amplifier as shown.
- 1.2 Plug the modular connector on the Console Interface Cable into the modular jack on the back of the Base. Plug the other end into your console.
- 1.3 Plug the AC Adapter into the wall outlet, and plug the round power connector into the back of the Base. The Base Power indicator will illuminate.
- 1.4 Slide the Battery Pack on to the Remote Unit. When the Battery Pack is installed or changed, the indicator light will begin to flash as soon as the unit is ready for use. This may require up to 45 seconds as the Remote Unit determines and selects the most reliable radio channel.
- 1.5 Attach a Headset to the Remote Unit.

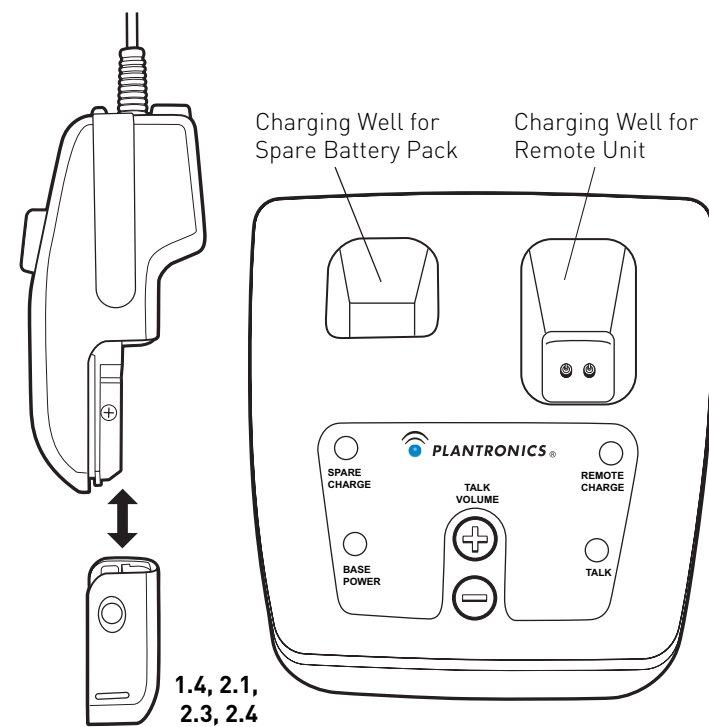
Note: Except for adjusting the Headset Volume on the Remote Unit to the users preference, no other adjustments are typically required. Please refer to Section 3 for adjustment instructions.

2 Battery Charging & Management

- 2.1 To attach the Battery Pack to the Remote Unit, simply slide the Battery Pack onto the Remote Unit and snap it into place. Do not force them together.
- 2.2 The Base Unit is equipped with 2 battery charging wells. The larger well allows charging of the battery while it is attached to the Remote Unit. The smaller well allows charging of a spare Battery Pack all by itself.
- 2.3 Insert the Remote Unit and the spare Battery Packs into their respective charging wells. The Charge Indicators will flash when the Battery Packs are charging.
- 2.4 When the Battery Pack is charged, the charge LED will stop blinking and glow steadily.
- 2.5 The indicator light on the Remote Unit will begin to flash as soon as the unit is ready for use. This may require up to 45 seconds as the Remote Unit determines and selects the most reliable radio channel.

- 2.6 A fully charged Battery Pack will usually last for an 8-hour shift. To maximize the life of the Battery Pack, turn the Remote off and place it into the charging well when not in use. Prior to being used, Battery Packs must be charged for 3 hours.

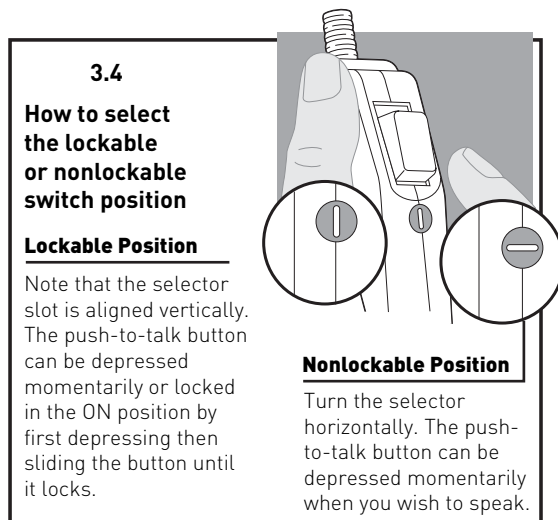
Note: Swap battery packs at the end of each shift.
Note: Always release/disengage PTT button before swapping Battery Packs.



3 Operation

The CA12CD operates within the 1.92–1.93 MHz frequency range. Operation of other devices within this frequency range will reduce the user density of the CA12CD.

- 3.1 To maximize user density, always turn Remote Unit off when not in use.
- 3.2 Press the On-Off button located on top of the Remote Unit. The green On-Off indicator will begin to flash. If the battery has just been installed, the Remote Unit will automatically turn on and the On-Off indicator will begin to flash within 45 seconds. [Reference section 1.4]
- 3.3 Depressing the Push-To-Talk [PTT] button on the Remote Unit will generate the “key” signal to your console or radio. While the PTT button is depressed, the green Talk indicator on the Base Unit will illuminate.
- 3.4 The operation of the PTT button can be adjusted with a screwdriver to be either lockable or non-lockable as shown.



- 3.5 You should not need to adjust your Talk (transmit) level: The factory setting (coarse switch set to 4 and fine-adjust set to nominal) is perfect for most applications. If you need to change this level, first try adjusting the fine-adjust controls on the top of the Base. If you cannot get a sufficient change in output by adjusting the fine-adjust controls, change the course-adjust switch on the bottom of the Base to the next position. You may have to repeat these steps a couple of times before you get the correct Talk level.

- 3.6 The Listen (receive) level is set at the factory to coarse-switch position 2, and the fine-adjust rocker switch on the Remote is set to nominal. If you need to change this level, you can do so by following the steps for changing the Talk level in the previous section.
- 3.7 The Base and the Remote are paired with each other at the factory in a process called subscription. If you replace your Remote, or if your Remote loses its subscription (indicated by a rapidly-flashing On-Off LED), you can perform the subscription process as follows:
 - Hold both of the Talk Volume Fine-Adjust controls on the top of the Base down.
 - The Base Power LED will begin blinking.
 - Hold the Remote’s Fine-Adjust Volume Control in either the up or down position while holding the PTT button down.
 - The Remote’s On-Off LED will turn on steady (no flashing).
 - The Remote will subscribe (or re-subscribe) to the Base, after which the Base Power LED will return to the steady-on state and the Remote’s On-Off LED will go out.
 - Unplug AC adaptor from the Base and then plug it back in.
 - Press the Remote’s On-Off switch to enable the RF link and use the CA12CD.

