

III. Tests of clause 6, headset EUT

Clause 6.1 Emissions tests for the headset EUT

For the tests of clause 6.1 of C63.17-2006, the test platform and headset EUT are configured according to test configuration #1, Conducted emissions tests, headset EUT, of section (I) of this document. The headset EUT is established in a communications channel with the base companion device by means of a radiated-coupled connection, though the headset EUT is in conducted connection to the spectrum analyzer of C63.17-2006 in clause 6.1.1. Administrative commands are used to set the base to the desired carrier for the test, and so the headset EUT is constrained to use those carriers, since it uses the carriers that the base is constrained to.

For all clause 6 testing the headset was fixed in maximum output power mode as this is the worst case configuration (closest to specification) for output power, and emissions tests.

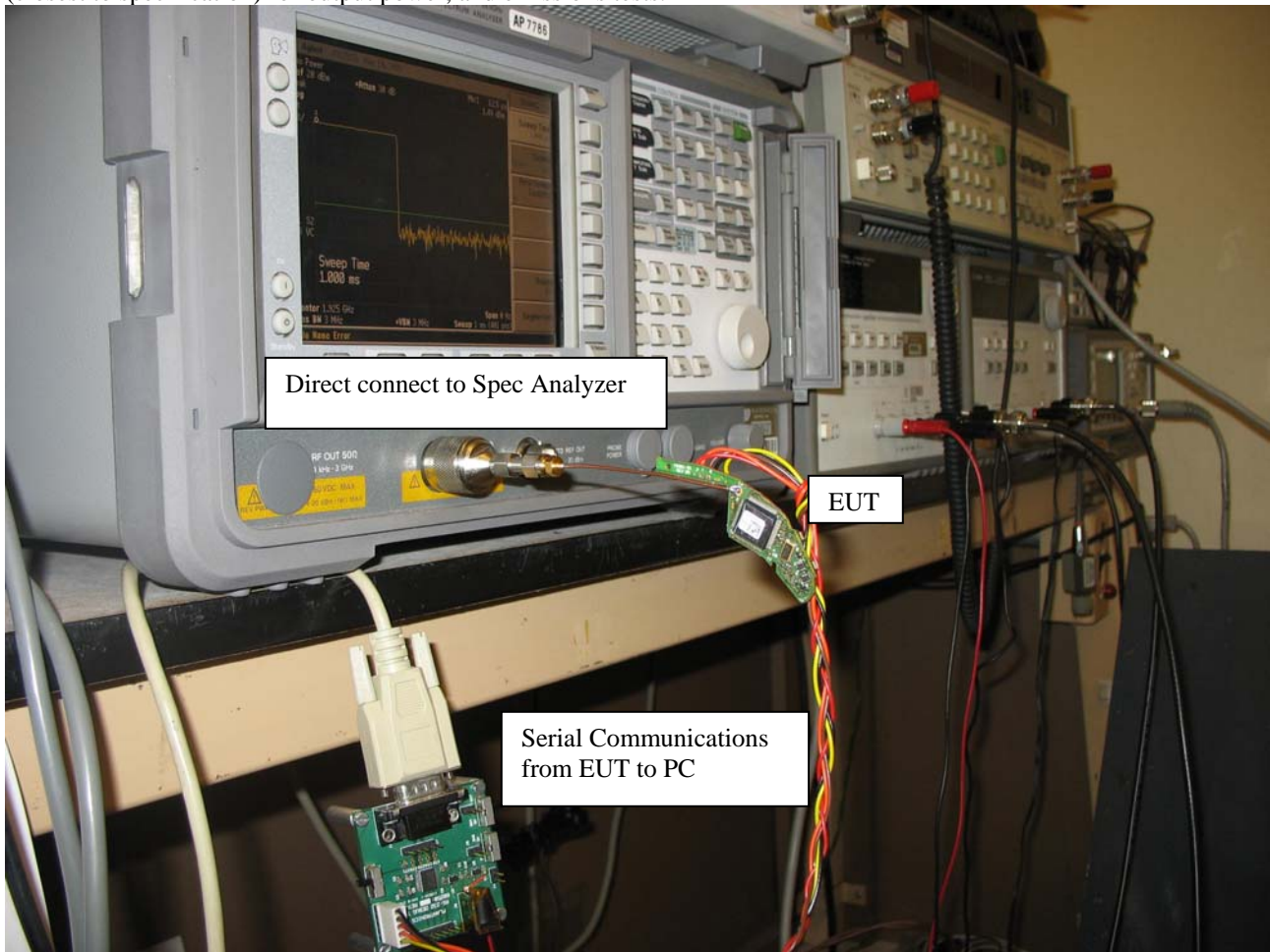


Fig. 6 - Headset EUT in direct connection with spectrum analyzer and radiated connection with base companion device, for the tests of clause 6.1.

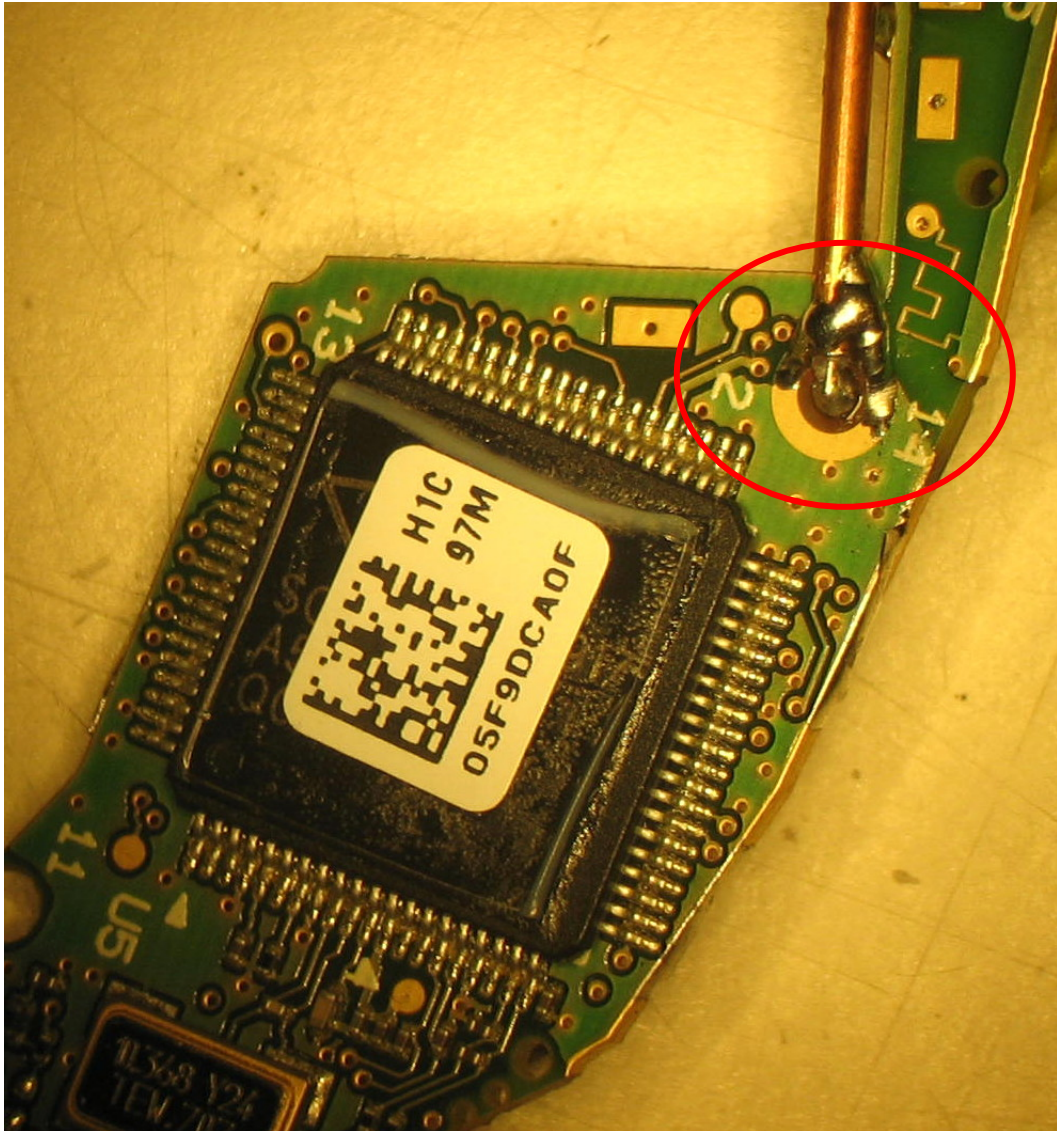


Fig. 7 – Detail of the attachment of the RF connection for conducted measurements.

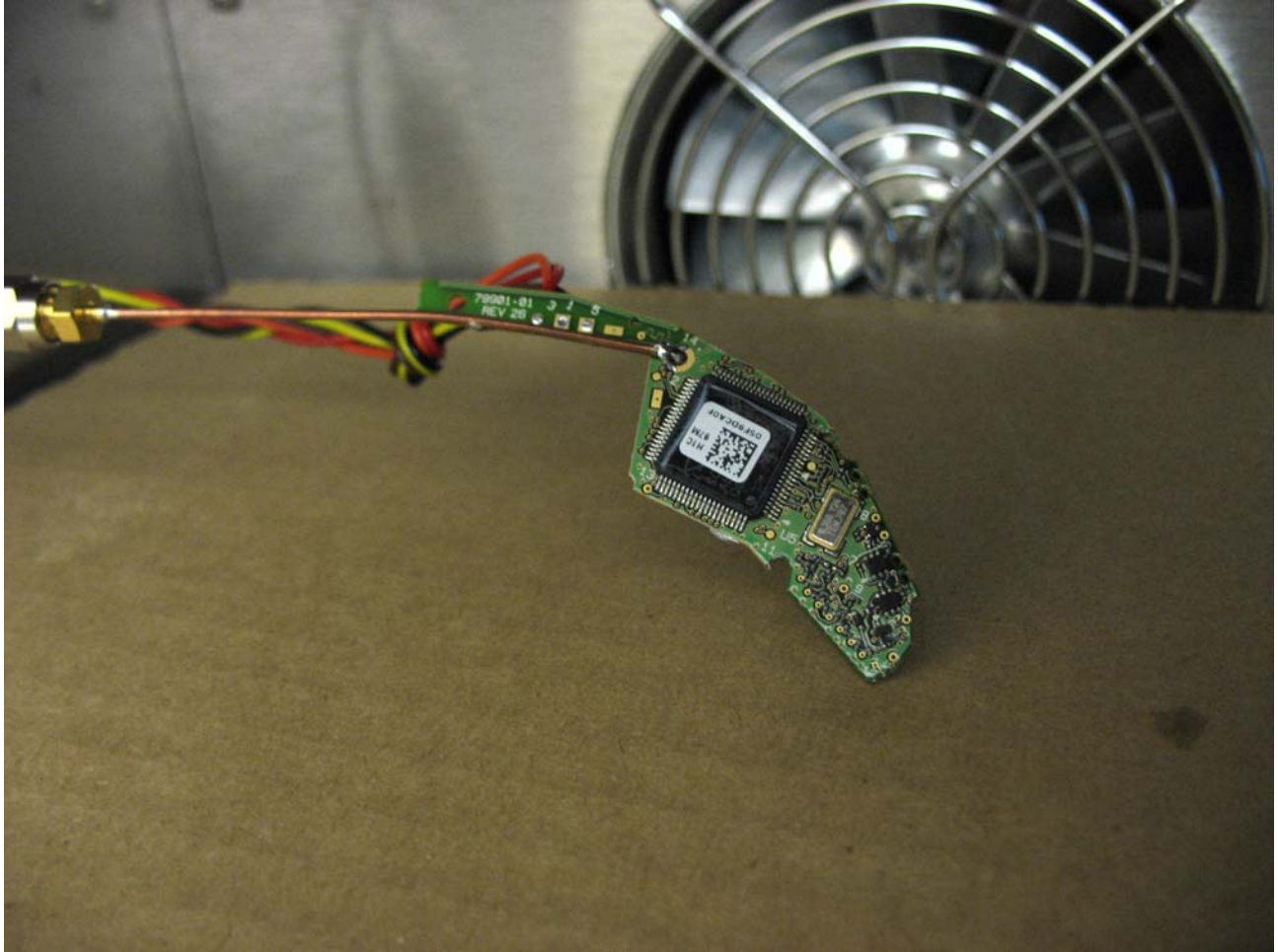


Fig. 43 - Detail of headset EUT as tested within the temperature chamber for the tests of clause 6.2.