

# Appendix A

## Detailed System Check Results

1. System Performance Check
-----------------------------

System Performance Check 2450 MHz Head
--

Test Laboratory: SGS-SAR Lab

**System Performance Check 2450MHz Head-0124****DUT: D2450V2; Type: D2450V2; Serial: 733**

Communication System: UID 0, CW; Frequency: 2450 MHz; Duty Cycle: 1:1

Medium: HSL2450; Medium parameters used:  $f = 2450$  MHz;  $\sigma = 1.782$  S/m;  $\epsilon_r = 40.717$ ;  $\rho = 1000$  kg/m<sup>3</sup>

Phantom section: Flat Section

DASY 5 Configuration:

- Probe: EX3DV4 - SN3789; ConvF(6.95, 6.95, 6.95); Calibrated: 2023/11/23
- Sensor-Surface: 1.4mm (Mechanical Surface Detection)
- Electronics: DAE4 Sn896; Calibrated: 2023/3/17
- Phantom: SAM 6; Type: SAM Twin; Serial: 1913
- DASY52 52.10.4(1527); SEMCAD X 14.6.14(7483)

**Configuration/d=10mm, Pin=250mW/Area Scan (8x8x1):** Measurement grid: dx=15mm, dy=15mm

Maximum value of SAR (measured) = 21.8 W/kg

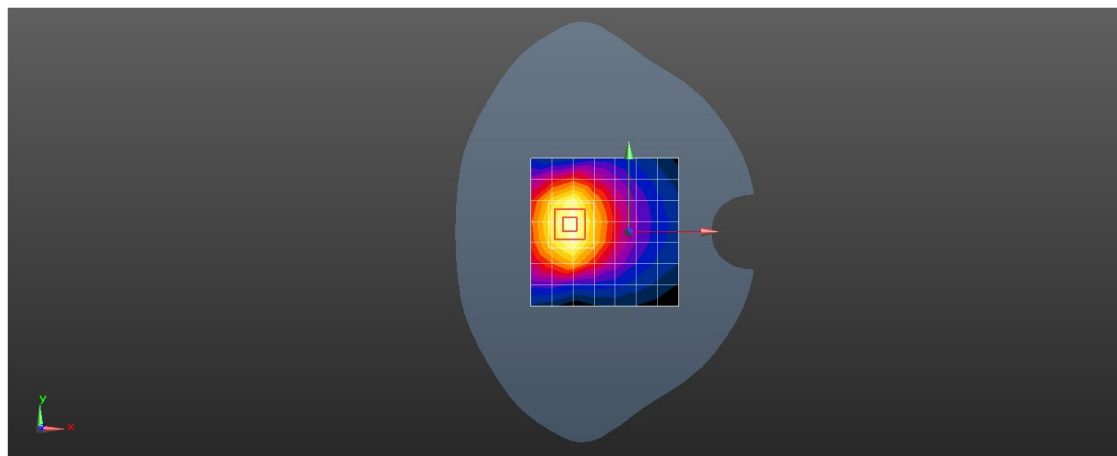
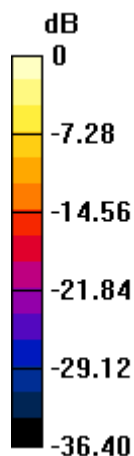
**Configuration/d=10mm, Pin=250mW/Zoom Scan (5x5x7)/Cube 0:** Measurement grid: dx=8mm, dy=8mm, dz=5mm

Reference Value = 19.12 V/m; Power Drift = 0.03 dB

Peak SAR (extrapolated) = 27.7 W/kg

**SAR(1 g) = 13.6 W/kg; SAR(10 g) = 6.29 W/kg**

Maximum value of SAR (measured) = 22.4 W/kg



0 dB = 21.8 W/kg = 13.38 dBW/kg