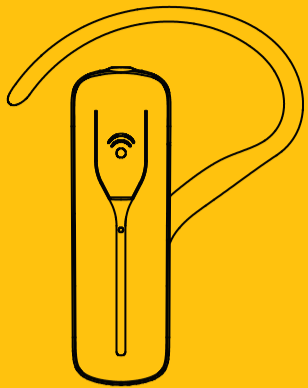


Voyager 835

Bluetooth headset quickstart guide



SAFETY INFORMATION

Note: Please read this information before you use the headset.

Electronics Devices

To avoid electromagnetic interference, please turn off the headset in any place where posted notices instruct you to do so.

Note: Most modern electronic devices are susceptible to electromagnetic interference (EMI) if inadequately shielded, designed, or otherwise configured for electromagnetic compatibility.

Aircraft

Turn off the headset when on board an aircraft. The use of this headset might interfere with the electrical system of an aircraft.

Medical Instruments

If you use a medical device, such as a pacemaker, consult the manufacturer of your medical device to determine if it is adequately shielded from electromagnetic interference. Your physician can assist you in obtaining this information.

Power Adapter

Only use the supplied power adapter with the headset.

SAFETY INFORMATION

Placement

You are advised to put the headset in a safe place where it will not be bent or crushed when not in use otherwise it may bring harm to human body.

Children

Keep the headset away from children. Some small or detachable parts might be swallowed and result in harm.

Repair or Service

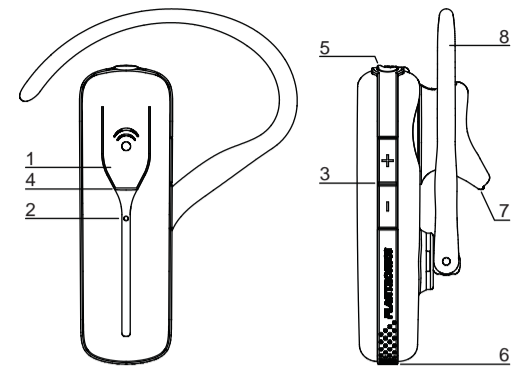
Any attempt to modify or remove of any part of the headset will void the warranty.

GENERAL DESCRIPTIONS

Voyager 835 is an ear clip type Bluetooth-enabled, wireless hands-free headset, which complies with the Bluetooth V2.0+EDR specification and supports the Headset Profile, Hands-free Profile.

GETTING STARTED

Identifying parts

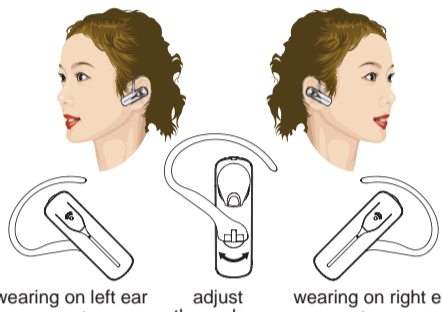


1. Multi-Function Button
2. Microphone
3. Volume Button
4. Indicator Light
5. Charging interface
6. Microphone 2
7. Earbud
8. Adjustable Ear Loop

Adjusting the headset for comfort

The lightweight Voyager 835 can be worn comfortably on either ear. Adjust the headset according to the following figures.

GETTING STARTED



Note: You can adjust the ear-clip angle for comfort, but please be careful in not to break the clip.

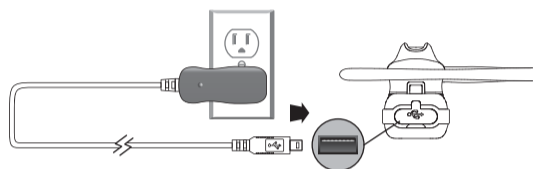
Status LED

Headset state	LED color and status
Power on	Steady Blue LED for 500 ms
Power off	Steady Red LED for 500 ms
Pairing	Blue LED & Red LED flash 200 ms alternately
Successful Pairing	Steady Blue LED for 1000 ms
Unsuccessful Pairing	Steady Red LED for 1000 ms
Ongoing Call	Blue LED flashes 100 ms every 1600 ms
Low battery	Red LED flashes 300 ms every 10000 ms
Missed call	Blue and Red LED flashed 50 ms together every 10000 ms
Press of MFB, Vol +/- in ongoing call	Steady Blue LED for 50 ms
Charging	Red LED on

GETTING STARTED

Charging the built-in battery

Voyager 835 has a built-in battery, which must be charged fully before using the headset. Charging takes about 2 hours. You can charge the headset through the AC adapter.



Using USB charging adapter

Note:

1. When you use Voyager 835 for the first time, please assure to charge it over 2 hours until it is full charged.
2. When Red LED flashes 300ms every 10000ms with alert tone, Voyager 835 is in low battery, please charge it.
3. The power source can be only connected to SELV circuit and complies with limited power source.
4. The external power adaptors listed below are in compliance with limited power source.

GETTING STARTED

Vendor	Speedytech	Sunstrong
UK	7501SD-5018A-UK	SB050018
US	7501SD-5018A-UL	SV050018
EU	7501SD-5018A-EU	SU050018
CHINA	7501SD-5018A-CCC	--
AU/NZ	7501SD-5018A-SAA	--
KOREA	7501SD-5018A-EK	--
MEXICO	7501SD-5018A-UL	--

THE FUNCTION AT A GLANCE

In this guide, "Short key press" refers to a time period of less than 0.8 s during which functional button is being pressed. "Double key press" refers to a time period of less than 0.5 s between two "Short key press". "Medium key press" refers to a time period of holding the key down more than 2 s. "Long key press" refers to a time period of holding the key down more than 4 s. "Very long key press" refers to a time period of holding the key down more than 6 s.

Phone operation

Pairing the headset with a phone

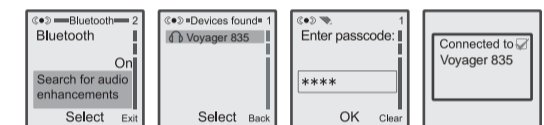
THE FUNCTION AT A GLANCE

Before you can use the headset to make calls, you must pair the headset with your phone. Pairing creates a secure link between your phone and the unique ID of the headset. You only have to pair devices once.

(1) To put the headset in pairing mode, press and hold (more than 6 seconds) the Multi-function button until the LED flash red/blue.

(2) Scroll to the Bluetooth menu in you phone and search for active devices. (Refer to you phone's user manual for details)

(3) When the search completes, a list of devices found is displayed.



(4) Select Voyager 835 and when prompted input the default passkey (0000). When successfully paired, the red/blue LED flash alternately on the headset changes to steady blue for 1s then no light on.

THE FUNCTION AT A GLANCE

Phone functions at glance

Headset state	Button
Power on	Power off: Medium key press multi-function button
Power off	Any state: Long key press multi-function button
Pairing	Power off: Very long key press multi-function button
Answer incoming call	Incoming call: Short key press multi-function button
Reject incoming call	Incoming call: Medium key press multi-function button
End a call	Ongoing call: Short key press multi-function button
Volume+	Ongoing call: Short key press "volume +" button
Volume-	Ongoing call: Short key press "volume -" button
Voice divert between headset and phone	Ongoing call: Medium key press multi-function button
Voice dialing	Connected: Press multi-function button until a tone appears and then voice dialing
Redial	Standby: Double key press multi-function button
Cancel calling out	Calling out: Short key press multi-function button

THE FUNCTION AT A GLANCE

Make internet phone calls

There are many internet phone services (VoIP) that let you make calls from your computer. You must add a new connection for this function.

(1) To put the headset in pairing mode, press and hold (more than 6 seconds) Multi-function button until the LED flashes red/blue.

(2) Right-click the Bluetooth Manager icon in the system tray and click Add New Connection (fig 1).



(fig 1)

(fig 2)

(3) Select the Custom Mode radio button and click Next. The wizard searches for device and the following screen appears, select the Voyager 835 and click Next (fig 2).

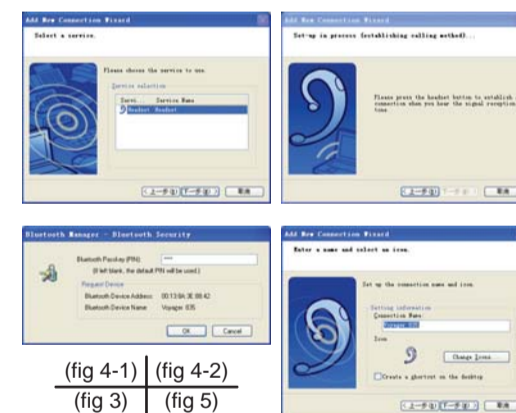
THE FUNCTION AT A GLANCE

(4) Type in the passkey (0000) and click OK (fig 3).

(5) Under Service Class, select headset and click Next (fig 4).

(6) When you hear a signal tone on the headset, short-press Multi-function button (fig 5).

(7) Click Next.



(fig 4-1)

(fig 4-2)

(fig 3)

(fig 5)

THE FUNCTION AT A GLANCE

(8) A registration confirmation screen appears, Click Finish to complete the connection. The new connection is shown in the Bluetooth Settings window (fig 6).

(9) Right-click the headset icon and click Connect (fig 7).



(fig 6)

(fig 7-1)

(fig 7-2)

(fig 8)

THE FUNCTION AT A GLANCE

(10) When you hear a single tone on the headset, short-press Multi-function button. Once connected the icon changes to a handshake (fig 8).

Now you can make an internet phone call by using Voyager 835.

Note: The headset only controls volume, Use the Skype interface for all call functions.

SPECIFICATIONS

Battery capacity	135 mAh
Talk time	up to 5 hours
Standby time	up to 100 hours
Weight	11.5 g
Size	53.7 * 23.8 * 16.7 mm

FCC RF RADIATION EXPOSURE STATEMENT

Federal Communications Commission (FCC) Statement

15.21

You are cautioned that changes or modifications not expressly approved by the part responsible for compliance could void the user's authority to operate the equipment.

FCC RF RADIATION EXPOSURE STATEMENT

15.105 (b)

This equipment has been tested and found to comply with the limits for a Class B digital device, pursuant to part 15 of the FCC rules. These limits are designed to provide reasonable protection against harmful interference in a residential installation. This equipment generates, uses and can radiate radio frequency energy and, if not installed and used in accordance with the instructions, may cause harmful interference to radio communications. However, there is no guarantee that interference will not occur in a particular installation. If this equipment does cause harmful interference to radio or television reception, which can be determined by turning the equipment off and on, the user is encouraged to try to correct the interference by one or more of the following measures:

- Reorient or relocate the receiving antenna.
- Increase the separation between the equipment and receiver.
- Connect the equipment into an outlet on a circuit different from that to which the receiver is connected.
- Consult the dealer or an experienced radio/TV technician for help.

Canada and USA Regulatory Information: Operation is subject to the following two conditions:

- (1) this device may not cause interference and
- (2) this device must accept any interference, including interference that may cause undesired operation of the device.

FCC RF Radiation Exposure Statement:

This equipment complies with FCC radiation exposure limits set forth for an uncontrolled environment. End users must follow the specific operating instructions for satisfying RF exposure compliance. This transmitter must not be co-located or operating in conjunction with any other antenna or transmitter.

TECHNICAL ASSISTANCE

Visit our Web site at www.plantronics.com/support for technical support including frequently asked questions, compatibility and accessibility information.

The Plantronics Technical Assistance Centre (TAC) is also ready to assist you on 0800 410014 from the UK.

EXPOSURE TO RF RADIATION

The internal wireless radio operates within the guidelines found in radio frequency safety standards and recommendations, which reflect the consensus of the scientific community. Independent studies have shown that the internal wireless radio is safe for use by consumers. Visit www.plantronics.com for more information.

Note: Modifications not expressly approved by Plantronics, Inc. could void the user's authority to operate the equipment.

MODEL AND COUNTRY INFORMATION

37677-04		GBR	
37677-05		AUT, BEL, DEU, DNK, ESP, FRA, GRC, ITA, IRL, LUX, NLD, PRT, SWE, FIN, CYP, CZE, EST, HUN, LVA, LTU, MLT, POL, SVK, SVN.	

WARNINGS

Use of a headset that covers both ears will impair your ability to hear other sounds. Use of such a headset while operating a motor vehicle or riding a bicycle may create a serious hazard to you and/or others, and is illegal in most regions.

Do not use headphones/headsets at high volumes for an extended period of time. Doing so can cause hearing loss. Always listen at moderate levels.



Plantronics Ltd Interface Business Park Birkenhol Lane Wootton Bassett Wiltshire SN4 8QQ, ENGLAND Tel: 0800 410 014	Plantronics B.V. Hoofddorp, Nederland Tel: 0800 752 6876 (NL) 00800 752 687 66 (BE/LUX)	Plantronics Sarl Noisy-le-Grand, France No Indigo: 0825 082599 0, 15 4 TTC / mn +33 14167 4141
Plantronics GmbH Hirth, Deutschland Tel: 0800 9323400	Plantronics Acoustics Milano, Italia Numero Verde: 800 950 934 Schweiz: 0800 932 340	Plantronics Iberia, S.L. Madrid, Espana Tel: 902 415 191 +34 91 640 47 44 (ES) Tel: 800 844 517 (PT)
Nordic Region Tel: Finland: 0800 117 095 Tel: Sverige: 02002 14681 Tel: Danmark: 8088 4610 Tel: Norge: 800 113 36	Plantronics Middle East, Eastern Europe, and Africa Tel: +44 1793 842 443	Plantronics, Inc. 345 Encinal Street Santa Cruz, CA 95060 USA Tel: 1 831 426 5868

Plantronics Inc.
MODEL: Voyager 835
Rating: 5 V ---, 180 mA



3115593

CONFORMS TO ANSI/UL STD. 60950-1
CERTIFIED TO CAN/CSA STD. C22.2 NO. 60950-1

© 2006 Plantronics, Inc. All rights reserved. Plantronics, the logo design, Plantronics Sound Innovation and Pulsar are trademarks or registered trademarks of Plantronics, Inc. The Bluetooth word mark and logos are owned by the Bluetooth SIG, Inc. and any use of such marks by Plantronics, Inc. is under license. Patents Pending. Printed in USA. (05-06)

Warning:

This device complies with part 15 of the FCC Rules. Operation is subject to the following two conditions:(1) The device may not cause harmful interference, and (2) this device must accept any interference received, including interference that may cause undesired operation.

Changes or modification not expressly approved by the party responsible for compliance could void the user's authority to operate the equipment.

Fcc Radio Frequency Exposure statement

This product has been evaluated under FCC Bulletin OET 65C and found compliant to the requirement as set forth in CFR 47 section 2.1091, and 15.247(b)(4) addressing RF Exposure from radio frequency device.

The radiated output power of this product is far below the FCC radio frequency exposure limits.