

FOLDING LINES

plantronics.

Project Specifications
 Project: GSG_ACCORDION_PS0_M2X_SERIES_EN
 Date: 11/30/11
 Component: Accordion User Guide

File Name: 87069-01_M2X_GSG_EN_113011.ai
 Art Master Number: 87069-01
 Part Number: 87068-01

Scale: 1:1
 Resolution: 300Dpi
 Units: N/A

Fonts: Gesta Light, Regular, Medium, Bold
 Software: CS5

Printing Method: Offset Lithography

Inks:

- PMS 294 C
- PMS Black C
- PMS Red 032C
- OVERALL MATTE VARNISH

Finishes: OVERALL MATTE VARNISH

Notes:

Designer: Malika Henderson
 Company: Content Rules, Inc.
 E-mail: malika@contentrules.com
 Phone: 1 415 847 6083

NEED MORE HELP?

Phone support in USA:
 1-866-253-8446 (24/7) or
plantronics.com/support

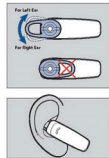
Online user guide:
plantronics.com/documentation

© 2011 Plantronics, Inc. All Rights Reserved. Bluetooth is a registered trademark of Bluetooth SIG, Inc. and the Bluetooth logo is a service mark of the Bluetooth SIG, Inc. Patent US 5,570,433 Patent Pending
www.plantronics.com



TRY IT ON

The loop of the gel ear tip tucks into the back curve of your ear for a stable fit. By on the headset, the ear tip is positioned to suit most people, but you may want to rotate it to best fit your left or right ear. The gel ear tip and speaker dock into matching grooves so the ear tip doesn't move out of place during use. For best voice pickup, always check that the headset points towards the corner of your mouth.



Stay Near Your Phone
 Bluetooth has a working "range" of up to 33 feet between the phone and headset before audio degrades and the connection is lost.

Know How to Reconnect
 Your headset tries to reconnect a lost connection. If it can't, then tap the Call button once or manually reconnect via the phone's Bluetooth device menu. If your headset remains out of range for more than 90 minutes, the DeepSleep mode will activate.

LEARN MORE

Use Multipoint One Call at a Time
 Once you have paired your two phones, it's easy to answer calls from either phone. When already on a call, you will hear a ringtone notification of the incoming call from the second paired phone. To answer a second call from the other phone, you must end the current call (tap Call button) so new call automatically answers. If you choose not to answer the second call, it will go to voicemail.

Use an iPhone to Check Headset Battery
 An icon representing the battery level of your headset is automatically displayed on screen beside the phone's battery level icon. **Listen to Music and More**
 If your phone also has the Bluetooth "A2DP" stereo music feature, then your music, podcasts, Internet radio and other streaming audio can be heard through this headset.

plantronics.

GET TALKING IN MINUTES

M25™ - M55™ series
 Designed in Santa Cruz, California

FRONT COVER

83.82
28.82

TAKE A LOOK

CALL BUTTON

- Take a call or end it (1 tap)
- Redial (2 taps)
- Inhibit phone's voice dialing (2 second press until tone is heard)
- Reconnect lost Bluetooth® connection (1 tap if the headset doesn't automatically reconnect)
- Activate pairing mode after initial set up (press until red/white LED flashes)
- Exit DeepSleep™ mode (1 tap)

POWER SWITCH

- On (slide to reveal green)
- Off (slide to reveal black)

VOLUME BUTTON

- Volume presets (1 tap per level change)

INDICATOR LIGHT (LED)

- Charging (solid red until charged)
- Very low battery (3 red flashes at powering off)
- Pairing mode (repeating red/white flashing)

MICRO USB CHARGING PORT

- Use with the AC wall charger: 1 hour before first use 2 hours (full charge)
- Do not use headset while charging

GET CONNECTED

1. Ready
First Time, Right Out of the Box: Turn on the headset. The LED flashes red/white to indicate pairing mode.
To Pair New or Second Phone: Turn on headset. Press Call button until the LED flashes red/white.

2. Set
 Activate the Bluetooth feature on your phone, then use phone menus to "add" "search" or "scan" new Bluetooth devices.
 For Example:
 iPhone: Settings > General > Bluetooth; On start the search for devices.
 BlackBerry®: Settings/Options > Bluetooth; On > Search for devices
 Android: Settings > Wireless & Networks > Bluetooth; On > Scan for devices

3. Connect
 Select "M25-M29" from the list of Bluetooth devices shown on your phone. If phone asks for a passcode, enter four zeros (0000). You may see **** on screen. Some phones also ask to confirm headset connection after pairing. Headset LED will stop flashing red/white once successfully paired/connected. You can now make a call using your phone's keypad or voice-dialing feature.

TRY DEEPSLEEP

If you leave your headset powered on but out of range from your paired phone for more than 90 minutes, your headset will conserve its battery power by entering into DeepSleep mode.
 This power-saving mode keeps your headset charged for up to 5 months so it's ready when you need it.
 Once back in range with your phone, tap the Call button to exit DeepSleep mode. If your phone is also ringing, tap the Call button again to answer your call.

671

BACK COVER

HEADSET HEIGHT: 28.82