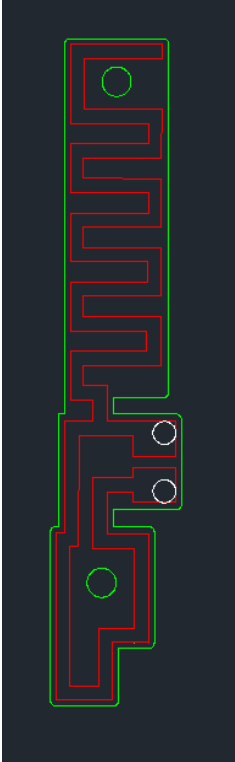



## 1. Introduction

<b>Part</b>	<b>ANT-Earbuds</b>
<b>Location</b>	<b>TWS-R or L</b>
<b>Antenna Type</b>	<b>FPC</b>
<b>Photo</b>	

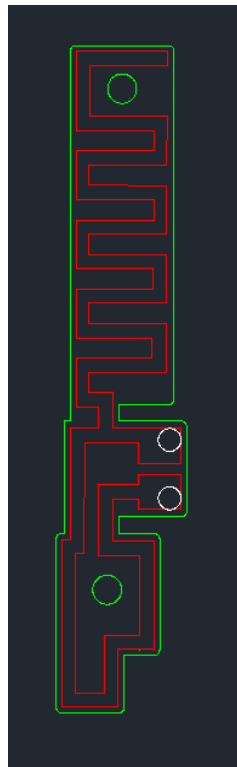
<b>Part</b>	<b>ANT101</b>
<b>Location</b>	<b>Wireless Charging case</b>
<b>Antenna Type</b>	<b>Printed</b>
<b>Photo</b>	

## 2. Revision History

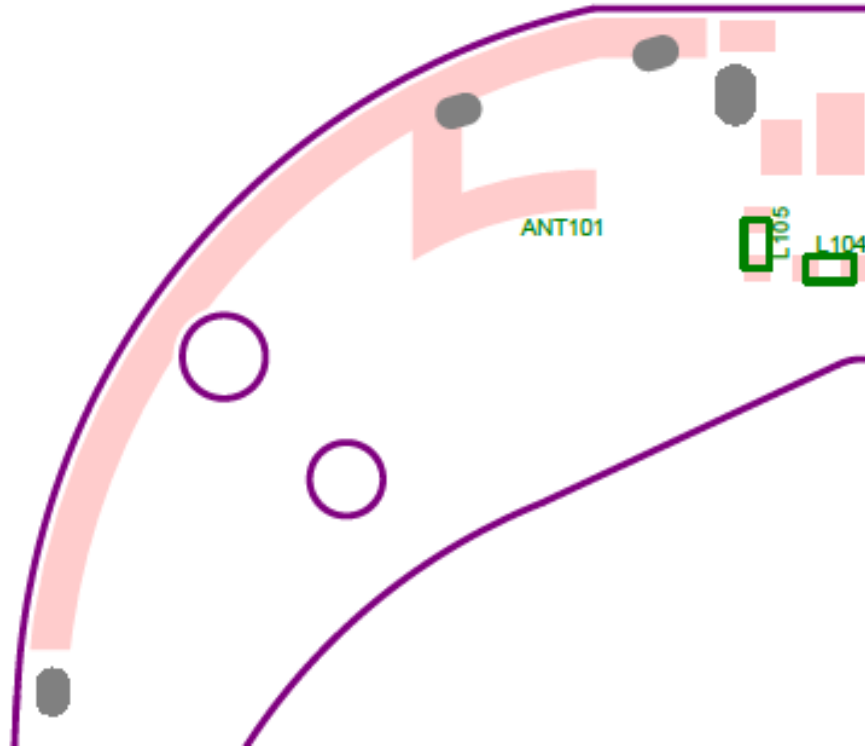
Date	Version	Revision History
2022-08-04	1.0	New Release

## 3. Antenna Drawings

### 3.1 ANT-Earbuds



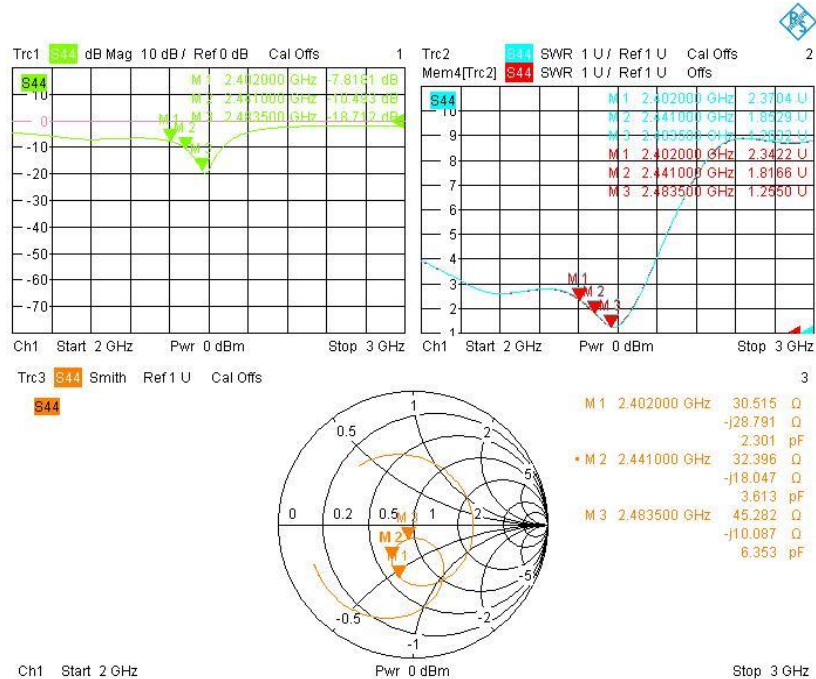
### 3.2 ANT101



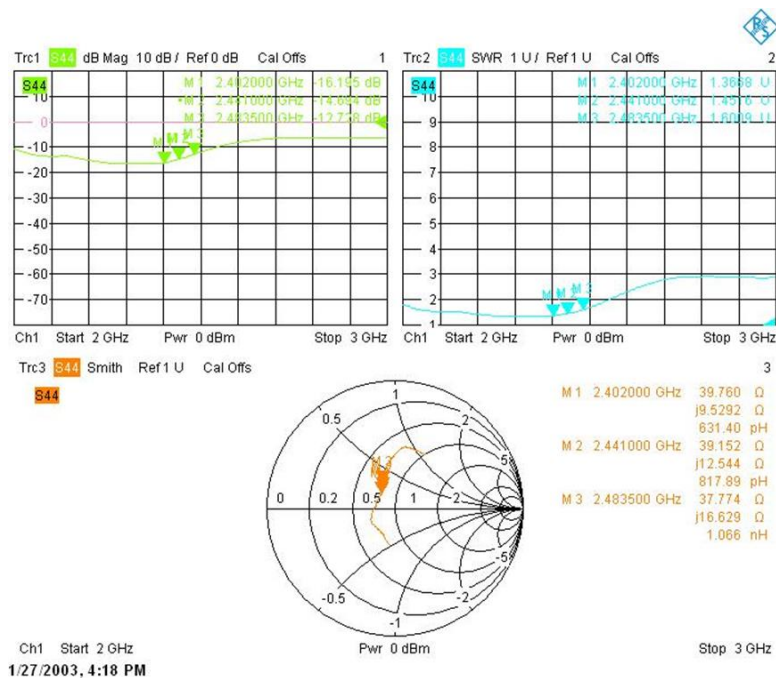
## 4. Antenna Performance

### 4.1 VSWR, Return Loss, Smith Chart

#### 4.1.1 ANT-Earbuds



#### 4.1.2 Ant101

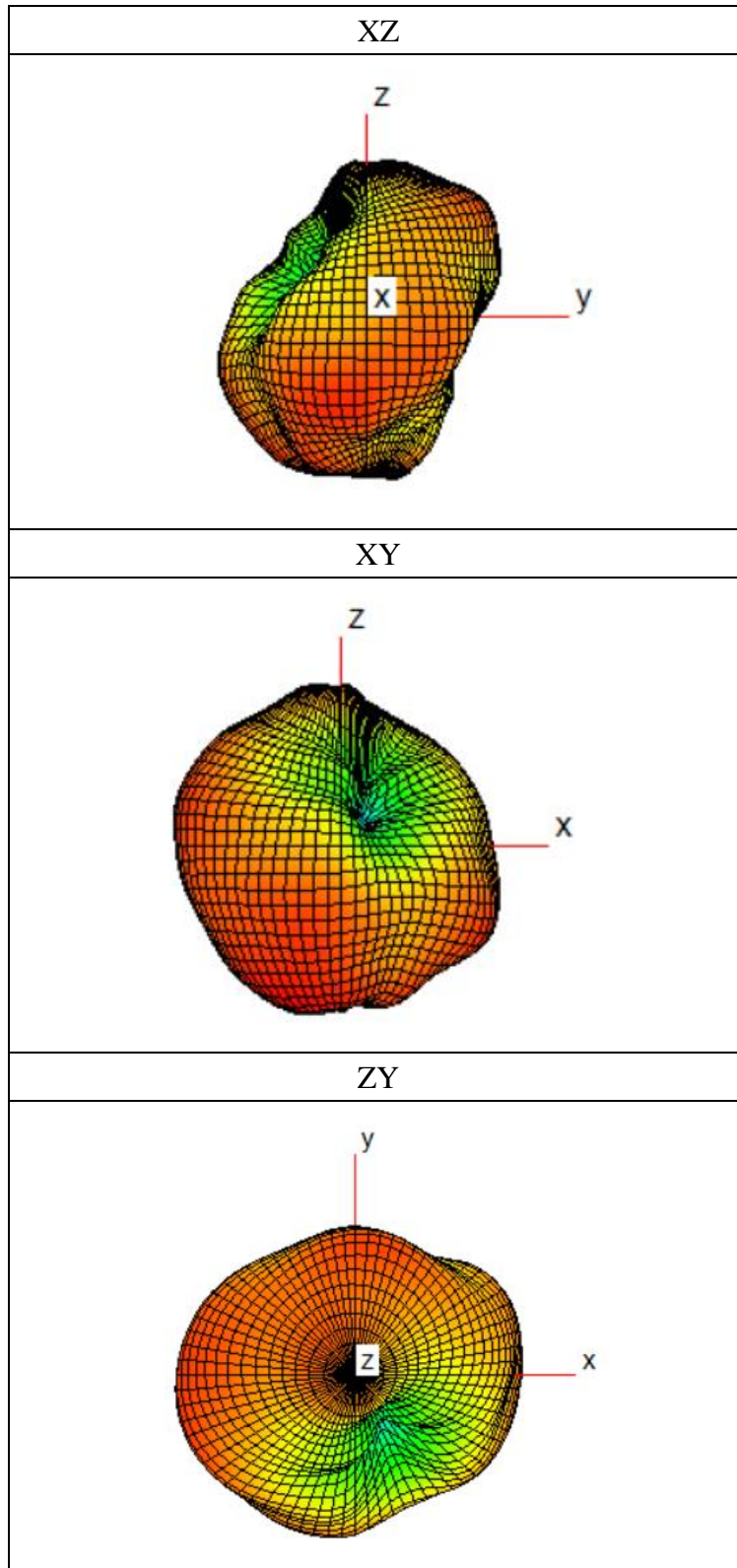


## 4.2 Antenna Gain and Efficiency

	2.4 GHz	2.45 GHz	2.4835 GHz
<b>ANT-Earbuds</b>			
Gain (dBi)	-6.40	-5.72	-5.56
Efficiency (%)	11.36	13.59	15.88
<b>Ant101</b>			
Gain (dBi)	-0.29	-0.46	-0.51
Efficiency (%)	22.92	22.43	21.64

## 4.3 Antenna Pattern

### 4.3.1 ANT-Earbuds



### 4.3.2 ANT101

