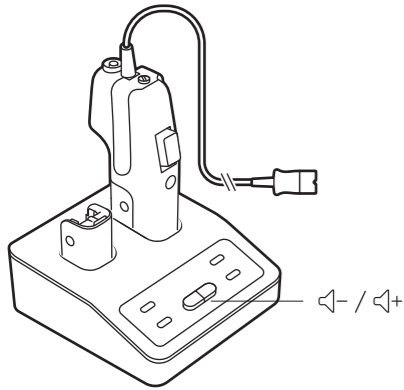




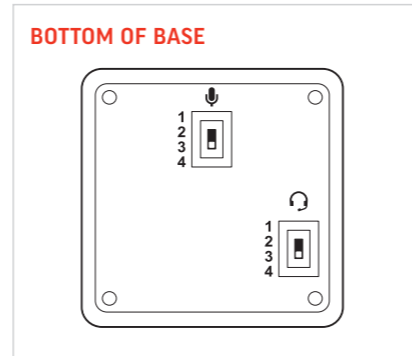
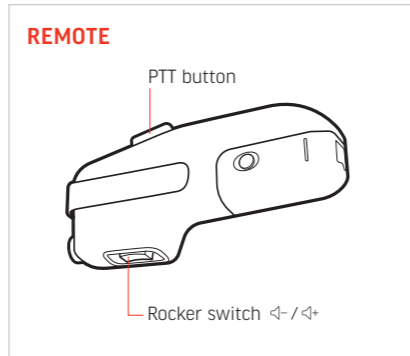
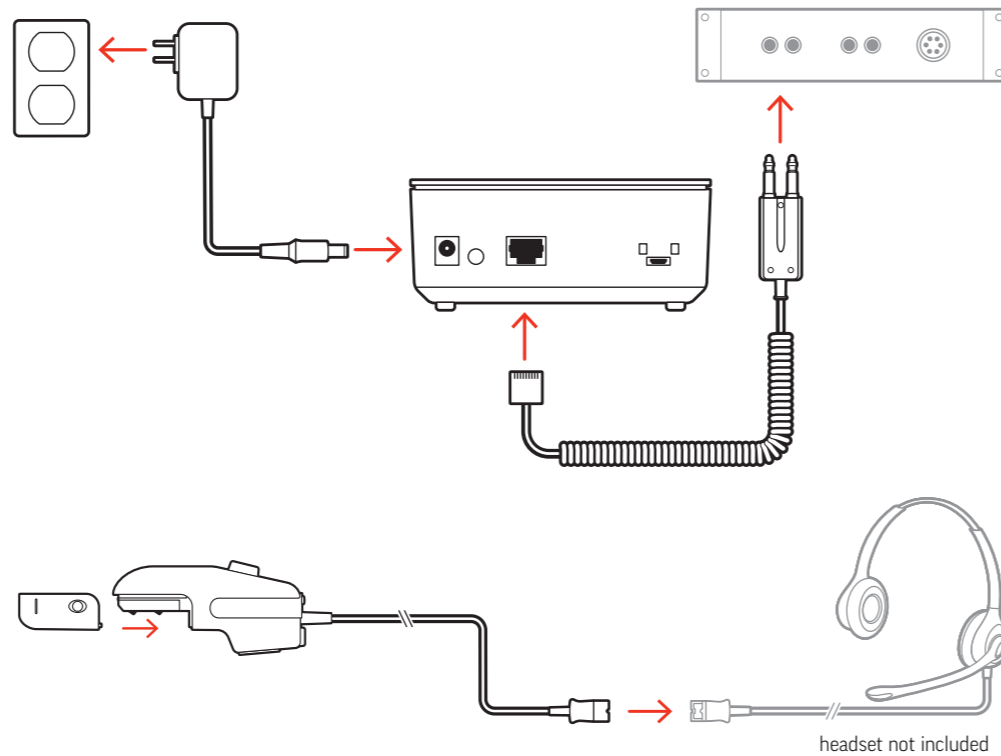
QUICK START

CA22CD PUSH-TO-TALK HEADSET AMPLIFIER



© 2020 Plantronics, Inc. All rights reserved. Poly, the propeller design, and the Poly logo are trademarks of Plantronics, Inc. All other trademarks are the property of their respective owners. Manufactured by Plantronics, Inc.
215720-03 11.20

CA22CD has a CA22CD base, (may be followed by /A or /S) and a CA22CDSY/CA22CDDY remote (may be followed by /A or /S).



poly.com/support

ENGLISH

CONNECT YOUR SYSTEM

Using the diagram, connect your system. Diagram shows a typical installation. Alternative USB port on back of the base can be used.

CHARGE YOUR REMOTE

Charge the remote and spare battery for a minimum of 1 hour by placing them in the base. The base LED flashes when charging and remains on when fully charged. Allow 4 hours for full charge.

ADJUST THE VOLUME CONTROLS

Default volume settings

Position 4 is the default setting for Talk and Listen coarse-adjust switches on the bottom of the base and correct for most applications.

Adjust Talk volume

Talk-course adjust switch position corresponds to your console's microphone input for (1) dynamic-, (2 & 3) electret-, or (4) carbon-bic applications.

- 1 Adjust the Talk switch to the next lowest or highest position until your caller can hear you clearly.
- 2 Press Talk Volume + or - buttons on the top of base to fine-tune your talk volume.

Adjust Listen volume

- 1 Adjust the Listen switch to the next lowest or highest position until you can hear the caller clearly.
- 2 Toggle the rocker switch on the remote to fine-tune your listen volume.

Prevent echoes

Excessively high audio levels can result in distortion and or/echo. Adjust your equipment's volume controls as described below.

- 1 Turn off or completely decrease your equipment's sidetone control (if present).
- 2 Set the console receiver and microphone volumes to mid-range.

ADJUST THE HEADSET MICROPHONE

For the best sound position boom so that the microphone is two finger-widths from the corner of your mouth.

KEY UP RADIO

Press the Push To Talk (PTT) button on the remote to key up your radio; the Talk LED on the base turns green.

MANAGE BATTERIES

Swap battery every 4 hours

A fully-charged battery powers your remote for 8 hours, however, we recommend swapping batteries every 4 hours.

IMPORTANT Swapping batteries every 4 hours maximizes the battery life and ensures communications are not interrupted by low batteries.

Low battery warning

Recharge your battery if you hear a single beep every 10 seconds.

Turn off audio link when charging or not in use

If left to charge with the link up, a new charging cycle begins about 3 hours after first charge. Using the remote at this time could result in reduced talk time.

Battery storage

Remove battery pack from remote when storing to prevent the battery from depleting.

Replace batteries

Monitor the performance of your batteries for gradually decreasing talk times and replace as needed.

NOTE Rechargeable batteries of all types gradually age and lose their ability to give and receive charge.

STAY WITHIN RANGE OF YOUR BASE

A triple beep warns you if your remote is out of range and has lost its audio link with the base.

NEED MORE HELP?

View complete user guide: poly.com/support