

III. Tests of clause 6, Base EUT

A. Clause 6.1 Emissions tests for the Base EUT

For the tests of clause 6.1 of C63.17-2006, the test platform and Base EUT are configured according to test configuration #1, **Conducted emissions tests, Base EUT**, of section (I) of this document. The Base EUT is established in a communications channel with the headset companion device by means of a radiative-coupled connection, though the Base EUT is in conducted connection to the spectrum analyzer, per figure 3 of C63.17-2006 in clause 6.1.1. Administrative commands are used to set the base to the desired carrier for the test.

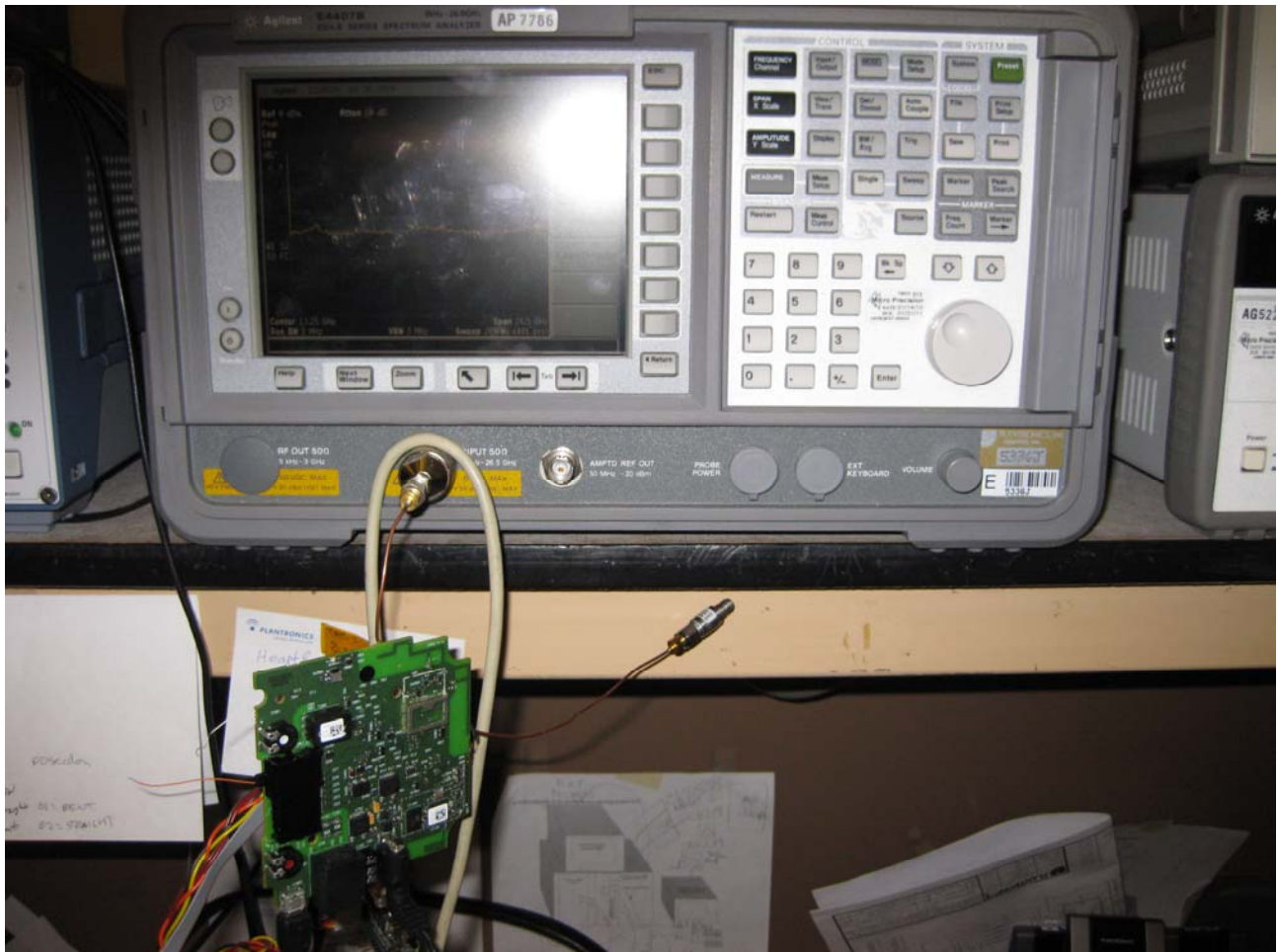


Fig. 6 - Base EUT in direct connection with spectrum analyzer and radiated connection with base companion device, for the tests of clause 6.1.

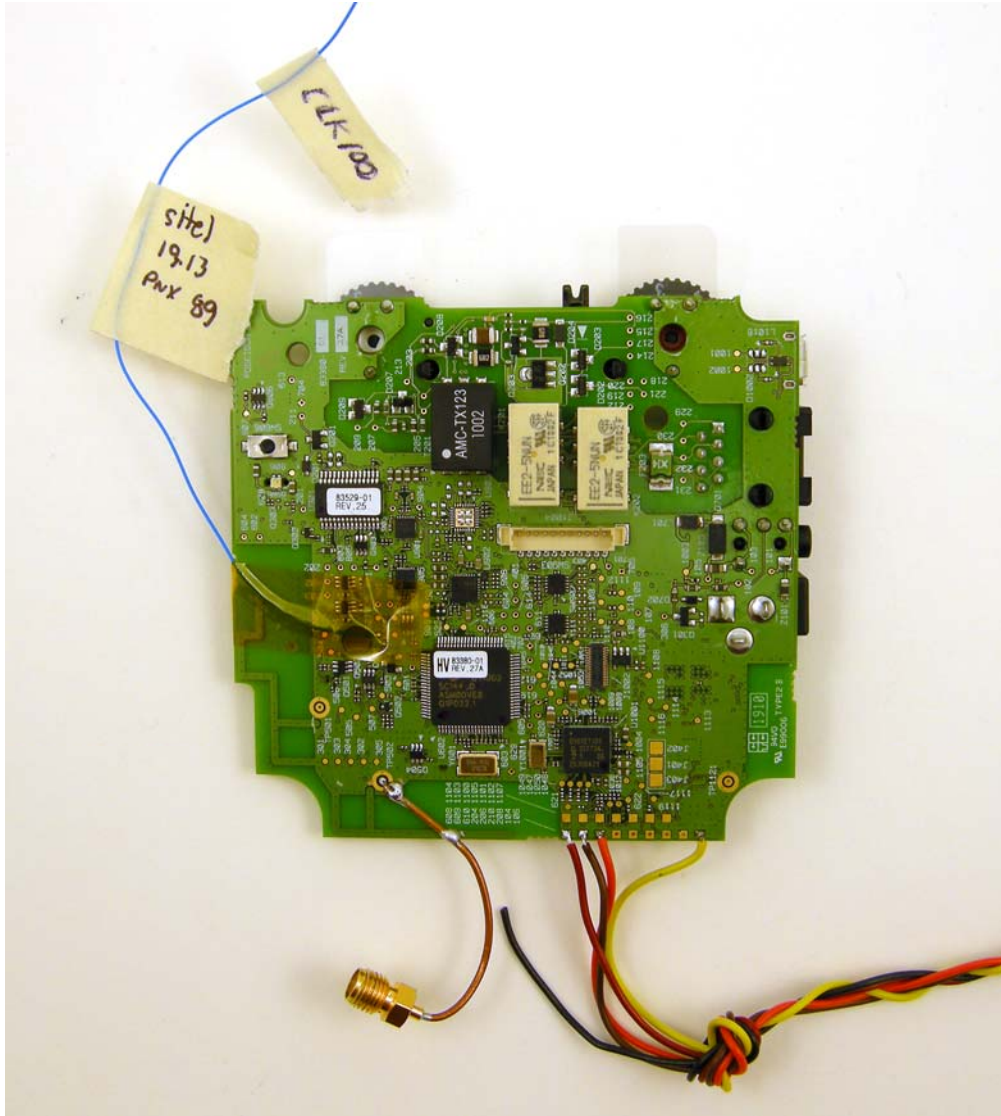


Fig. 7 – Detail of the attachment of the RF connection for conducted measurements.