

## Label Adapter



Please refer to next page for label, FCC & IC ID's on next page are wrong.  
Correct ID's are: **FCC ID: AL8-500A, IC ID: 457A-500A**

REVISION					
REV	DESCRIPTION	ECO NO.	DATE	BY	CHK'D ENGR APP'D
25	PROTOTYPE RELEASE		26-Aug-04	LL	

NOTES: (UNLESS OTHERWISE SPECIFIED)

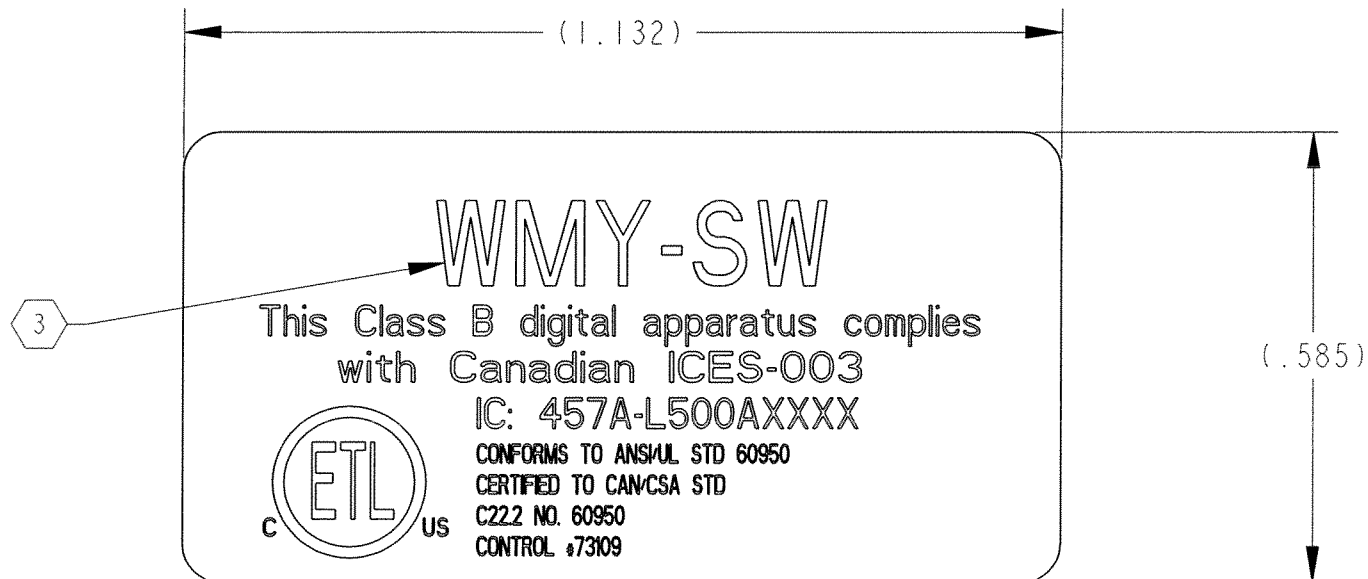
1. MATERIAL: MAKE FROM PLANTRONICS PART NO. 25600-01.

2. PRINT TEXT ON LABEL IN BLACK.

3 IDENTIFICATION NUMBER DEFINITION:  
 5 CHARACTERS PER BLUETOOTH PRODUCT CONFIGURATION CODE  
 MARKING SPEC (P/N 62906-00)  
 AS FOLLOWS:  
 W = B FOR THE BASE UNIT, R FOR THE REMOTE  
 M = MONTH OF PRODUCTION  
 Y = YEAR OF PRODUCTION  
 SW=SOFTWARE VERSION

EXAMPLE: BAI-MA = BASE, JANUARY 2001, A

4. IC NUMBER IS 457A-L500AXXX.  
THE CODE XXXX IS A PLACE HOLDER FOR FUTURE OEM VERSIONS.



TAB CHART	
DASH	DESCRIPTION
-DWG	ASSOCIATED DRAWING
-01	LABEL, IDENTIFICATION L500A



SCALE 1:1

*Jas Sub 11/1/04*  
*Andy Ward 11/1/04*  
*Muel Rood 11/1/04*  
*Robt Ben 11/1/04*

SEE SEPARATE BILL OF MATERIALS

# PLANTRONICS RESTRICTED

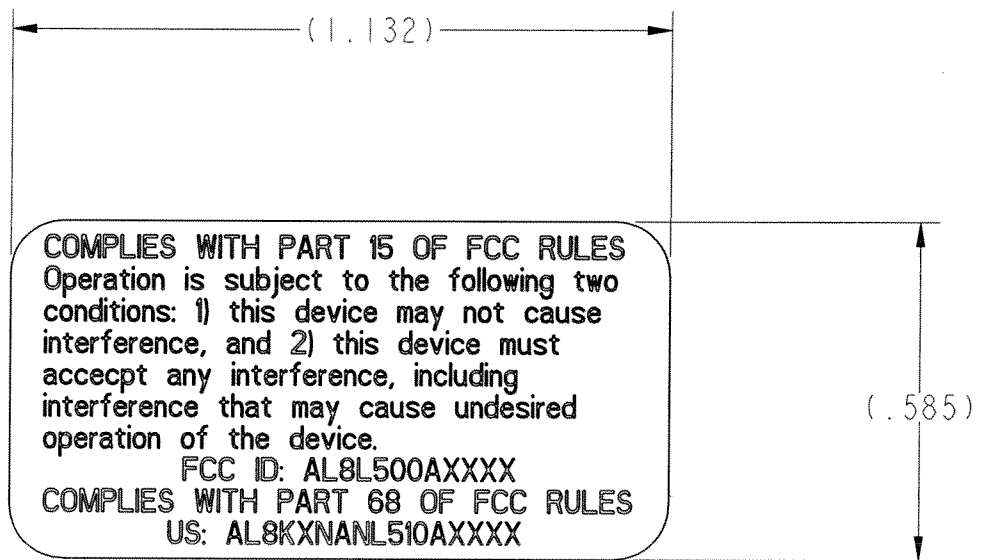
This document contains Plantronics, Inc. proprietary data, and is not to be copied, reproduced, used or divulged to unauthorized persons, in whole or in part, without proper authorization in writing from Plantronics. This information is the property of Plantronics, Inc. which reserves all rights to it.

INTRALINK RELEASE LEVEL <b>Proto</b>		UNLESS OTHERWISE SPECIFIED DIMENSIONS ARE IN: INCHES AND TOLERANCES ARE: DECIMAL .XX ± .01 .XXX ± .005 ANGLE = .5° FRACTION = ±		DO NOT SCALE		<b>PLANTRONICS®</b> World Leader in Communications Headsets	
THIRD ANGLE PROJECTION		MATERIAL:		DRAWN BY LLINVILLE 26-Aug-04	CHECKED BY <i>Jas Sub 11/1/04</i>		TITLE LABEL IDENTIFICATION NUMBER L500A
		FINISH:		DEV ENG APPD <i>Jas Sub 11/1/04</i>	MFG APPD	PROD ENG APPD	SIZE <b>B</b>
				CAT CODE 65	DWG NO. 68017-DWG	REV. 25	SCALE: 4:1 SHEET 1 OF 1

NOTES: (UNLESS OTHERWISE NOTED)

- 1. MATERIAL: MAKE FROM PLANTRONICS PART NO. 25600-01
- 2. PRINT TEXT ON LABEL IN BLACK

REVISION					
REV	DESCRIPTION	ECO NO.	DATE	BY	CHK'D BY ENGR APP'D
25	TOOLING RELEASE		26-Aug-04	LL	



COMPLIES WITH PART 15 OF FCC RULES  
 Operation is subject to the following two conditions: 1) this device may not cause interference, and 2) this device must accept any interference, including interference that may cause undesired operation of the device.  
 FCC ID: AL8L500AXXX  
 COMPLIES WITH PART 68 OF FCC RULES  
 US: AL8KXNANL510AXXX

SCALE 1.000

TAB CHART	
DASH	DESCRIPTION
-DWG	ASSOCIATED DRAWING
-01	LABEL, FCC, L500A

*Pat Bar 11/1/04*  
*Joe Sub 11/1/04*  
*Andy Ward 11/1/04*  
*Maat Rhoads 11/1/04*

SEE SEPARATE BILL OF MATERIALS

# PLANTRONICS RESTRICTED

This document contains Plantronics, Inc. proprietary data, and is not to be copied, reproduced, used or divulged to unauthorized persons, in whole or in part, without proper authorization in writing from Plantronics. This information is the property of Plantronics, Inc. which reserves all rights to it.

INTRALINK RELEASE LEVEL <b>Proto</b>	UNLESS OTHERWISE SPECIFIED DIMENSIONS ARE IN: INCHES AND TOLERANCES ARE: DECIMAL .XX ± 0.01 .XXX ± 0.005 ANGLE = 0.5° FRACTION = ±	DO NOT SCALE DRAWN BY LLINVILLE 26-Aug-04 CHECKED BY DWG ENG APPD MFG APPD PROD ENG APPD	<b>PLANTRONICS®</b> World Leader in Communications Headsets
THIRD ANGLE PROJECTION	MATERIAL:	TITLE LABEL, FCC L500A	SIZE <b>B</b>
	FINISH:	SCALE: 3.000	CAT CODE 65
			DWG NO. 68018-DWG
			REV. 25
			SHEET 1 OF 1

REVISION					
REV	DESCRIPTION	ECO NO.	DATE	BY	CHK'D BY ENGR APP'D
25	PROTOTYPE RELEASE		26-Aug-04	LL	

NOTES: (UNLESS OTHERWISE SPECIFIED)

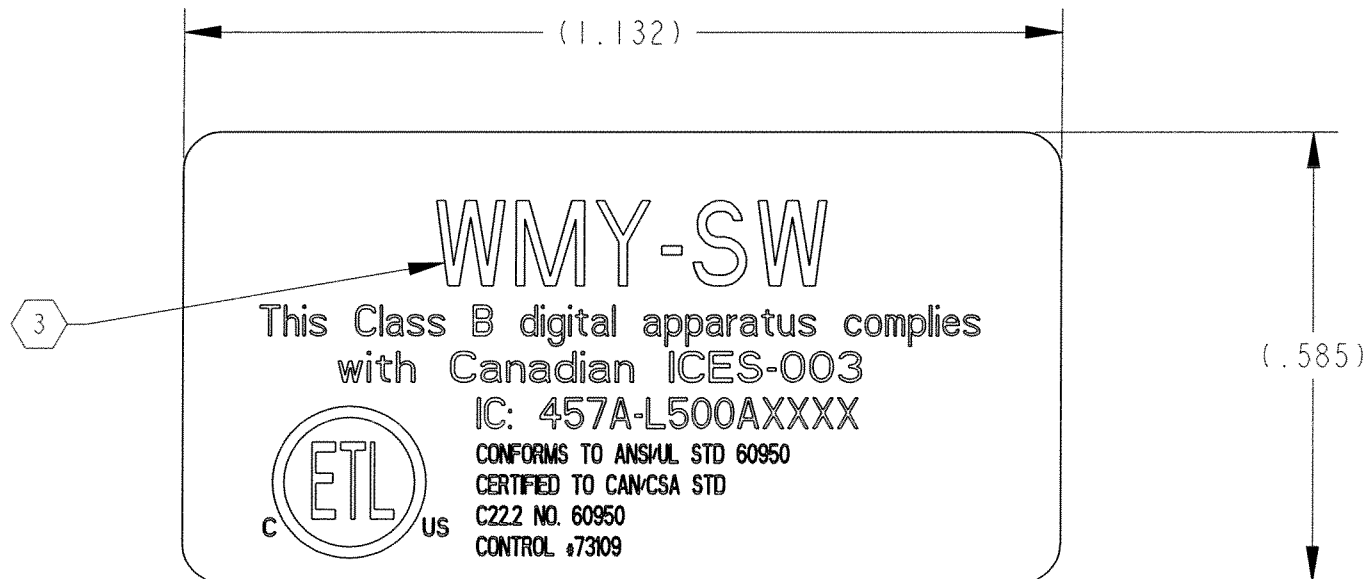
1. MATERIAL: MAKE FROM PLANTRONICS PART NO. 25600-01.

2. PRINT TEXT ON LABEL IN BLACK.

3 IDENTIFICATION NUMBER DEFINITION:  
 5 CHARACTERS PER BLUETOOTH PRODUCT CONFIGURATION CODE  
 MARKING SPEC (P/N 62906-00)  
 AS FOLLOWS:  
 W = B FOR THE BASE UNIT, R FOR THE REMOTE  
 M = MONTH OF PRODUCTION  
 Y = YEAR OF PRODUCTION  
 SW=SOFTWARE VERSION

EXAMPLE: BAI-MA = BASE, JANUARY 2001, A

4. IC NUMBER IS 457A-L500AXXX.  
THE CODE XXXX IS A PLACE HOLDER FOR FUTURE OEM VERSIONS.



TAB CHART	
DASH	DESCRIPTION
-DWG	ASSOCIATED DRAWING
-01	LABEL, INDENTIFICATION L500A



SCALE 1:1

*Jas Sub 11/1/04*  
*Andy Ward 11/1/04*  
*Muel Rood 11/1/04*  
*Robt Ben 11/1/04*

SEE SEPARATE BILL OF MATERIALS

# PLANTRONICS RESTRICTED

This document contains Plantronics, Inc. proprietary data, and is not to be copied, reproduced, used or divulged to unauthorized persons, in whole or in part, without proper authorization in writing from Plantronics. This information is the property of Plantronics, Inc. which reserves all rights to it.

INTRALINK RELEASE LEVEL <b>Proto</b>		UNLESS OTHERWISE SPECIFIED DIMENSIONS ARE IN: INCHES AND TOLERANCES ARE: DECIMAL .XX ± .01 .XXX ± .005 ANGLE = .5° FRACTION = ±		DO NOT SCALE		<b>PLANTRONICS®</b> World Leader in Communications Headsets	
THIRD ANGLE PROJECTION		MATERIAL:		DRAWN BY LLINVILLE		DATE 26-Aug-04	
		FINISH:		CHECKED BY		TITLE LABEL IDENTIFICATION NUMBER L500A	
				DEV ENG APP'D <i>Jas Sub 11-1-04</i>		SIZE <b>B</b>	
				MFG APP'D		CAT CODE 65	
				PROD ENG APP'D		DWG NO. 68017-DWG	
						REV. 25	
						SCALE: 4:1	
						SHEET 1 OF 1	