

# ANTENNA SPECIFICATION

<b>Project:</b>	<b>BMS002</b>
<b>Antenna type:</b>	<b>PCB Layout Antenna</b>
<b>Version:</b>	<b>V1.0</b>
<b>Issued Date:</b>	<b>22-Feb-21</b>
<b>Manufacturer</b>	<b>Sunitec Enterprise Co., LTD.</b>

Confidential—Provide to Finemost From Sunitec 11th, Sep 2021

# Contents

1. Revision History
2. Introduction
3. Electrical Characteristics

Confidential—Provide to Finemost From Sunitec 11th, Sep 2024



## 1.Revision History

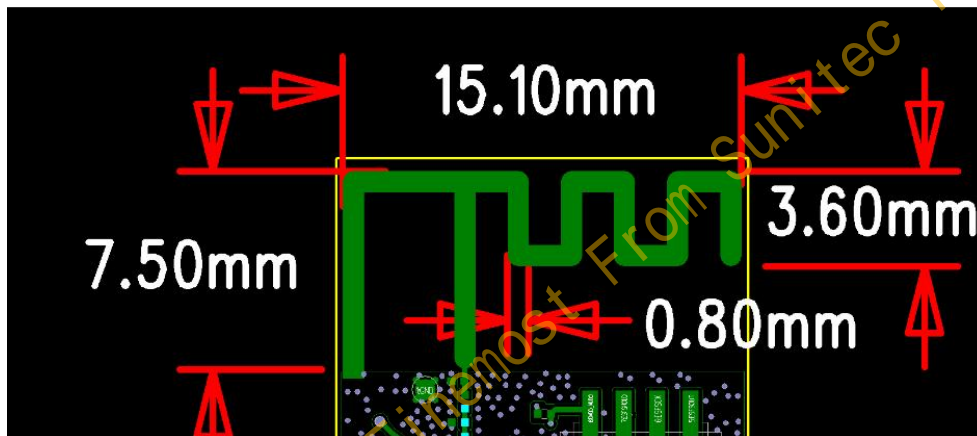
Rev.No	Issued Date	Description	Summary
V1.0	22-Feb-21	initial release	

## 2. Introduction

### 2.1 Introduction of Product

This product is a Bluetooth antenna with Layout on PCB

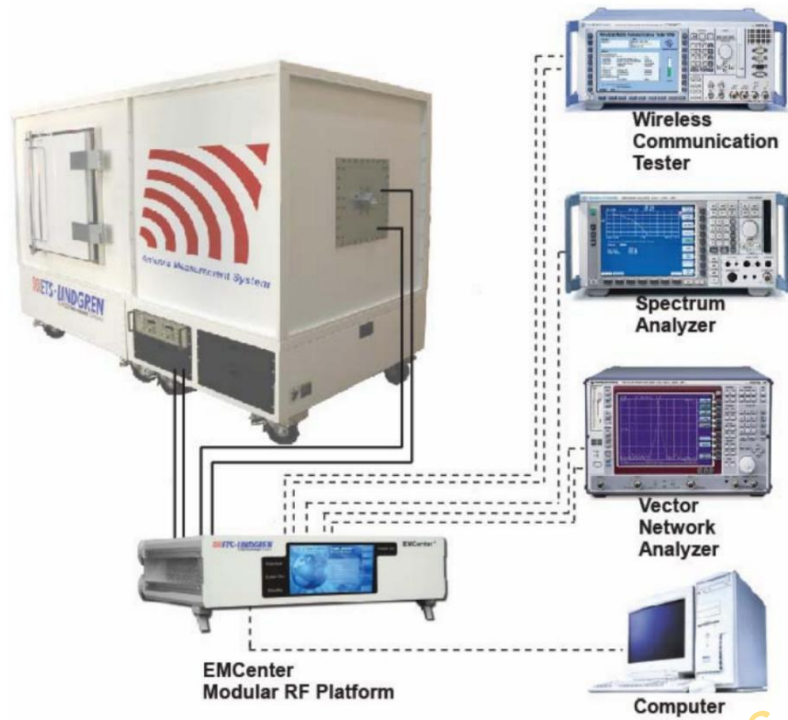
### 2.2 Dimension



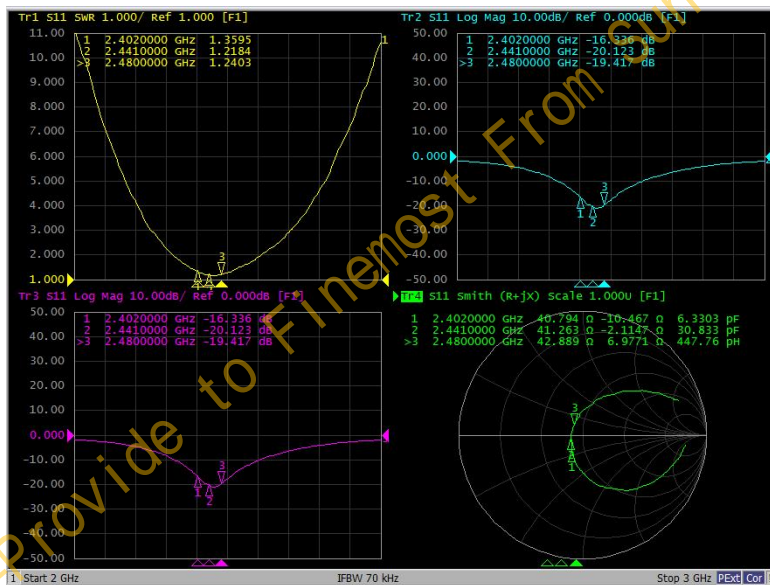
## 3. Electrical Characteristics

### 3.1 Test equipment:

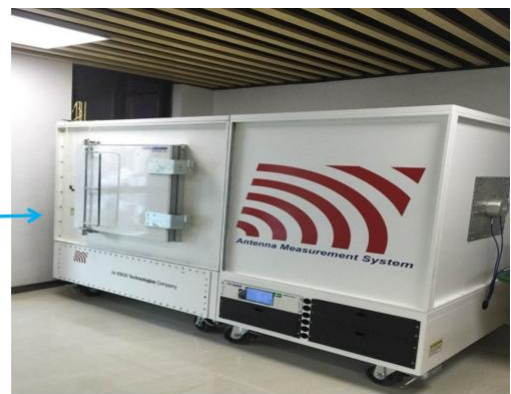
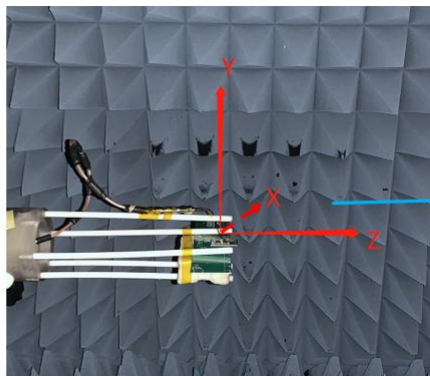
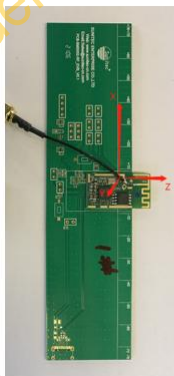
VECTOR NETWORK ANALYZER  
Agilent E5071c  
Antenna Measurement System  
ETS-Lindgren Antenna Measurement System



### 3.2 Antenna S11 parameters



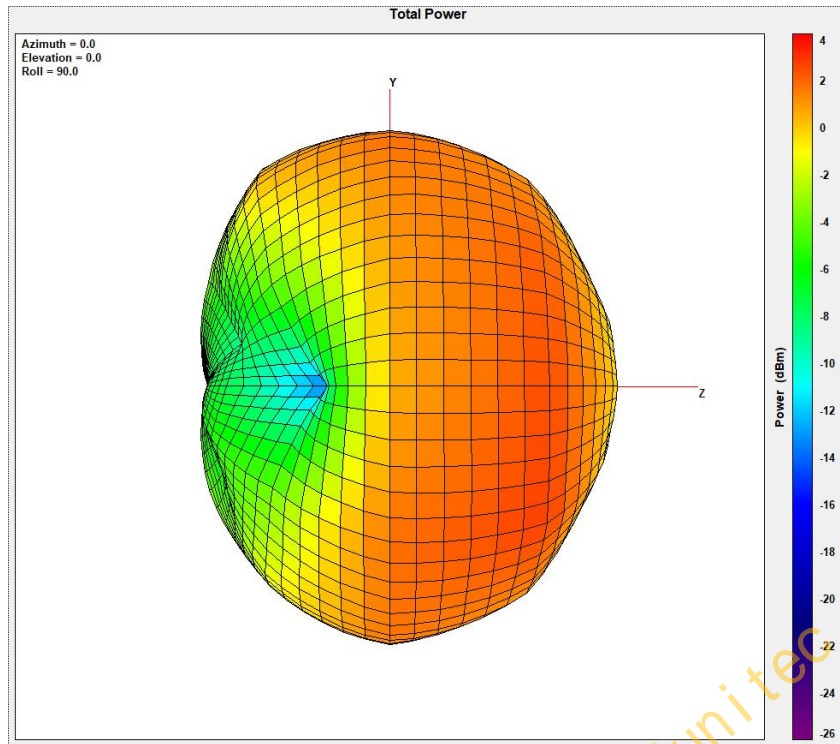
### 3.3 Antenna Test Settings:



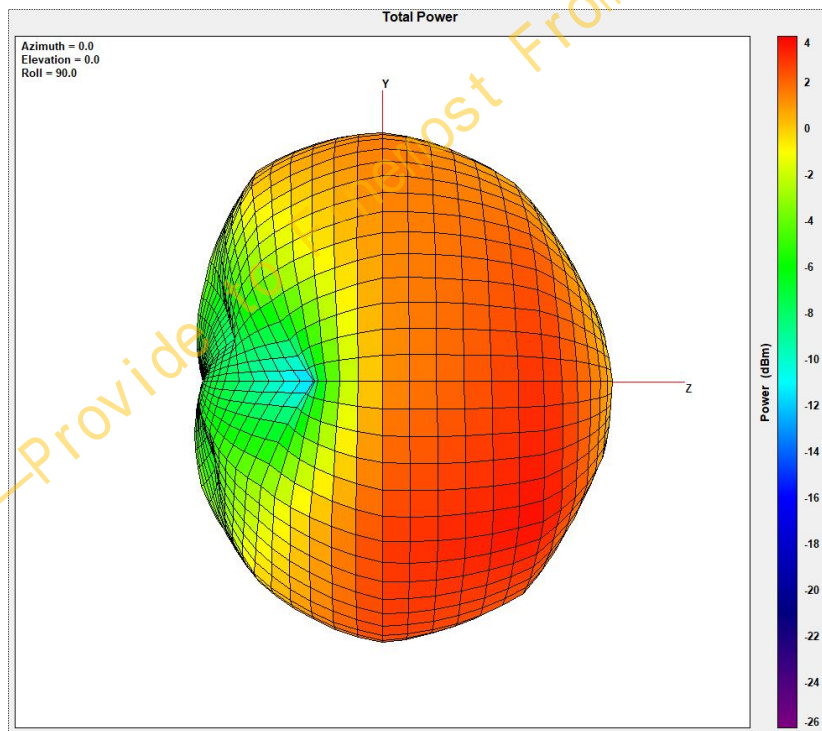
THIS DRAWINGS AND SPECIFICATIONS ARE THE PROPERTY OF SUNITEC ENTERPRISE CO.,LTD.AND SHALL NOT BE REPRODUCED OR USED AS THE BASIS FOR THE MANUFACTURE OR SALE OF APPARATUS OR DEVICES WITHOUT PERMISSION

3.4 3D Radiation Pattern :

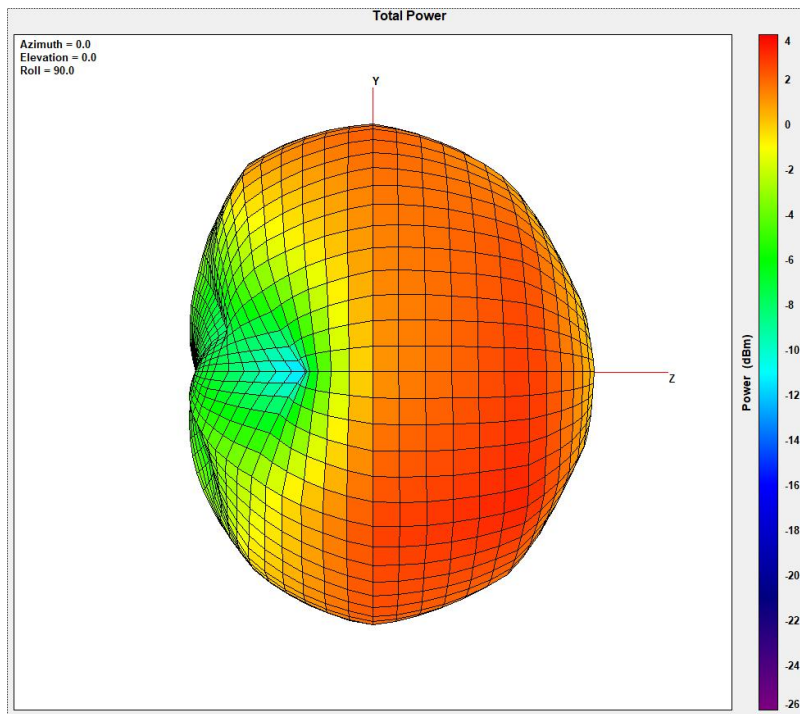
2402MHz



2441MHz



2480MHz



### 3.5 Electrical Characteristics:

<b>Antenna Model Name</b>	PCB Layout Antenna
Working Frequency Range	2450 ± 50MHz
Impedance	50Ω
Max Efficiency(%)	94.1%@2470MHz
Max peak Gain(dBi)	3.8dBi@2440MHz

Freq(MHz)	Gain(dB)	Efficiency(dB)	Efficiency(%)
2400	2.8	-0.9	81.4
2410	2.7	-0.8	83.7
2420	2.9	-0.7	84.6
2430	3.3	-0.6	86.9
2440	3.8	-0.4	90.2
2450	3.7	-0.4	91.5
2460	3.4	-0.3	92.5
2470	3.4	-0.3	94.1
2480	3.4	-0.3	92.6

THIS DRAWINGS AND SPECIFICATIONS ARE THE PROPERTY OF SUNITEC ENTERPRISE CO.,LTD.AND SHALL NOT BE REPRODUCED OR USED AS THE BASIS FOR THE MANUFACTURE OR SALE OF APPARATUS OR DEVICES WITHOUT PERMISSION