

ANTENNA SPECIFICATION

Client:	FINEMOST
Project:	SR-7862
Antenna type:	PCB Layout Antenna
Version:	V1.0
Issued Date:	10-Sep-23

Confidential—Provide to Finemost From Sunitec 13th, Sep 2024

Contents

1. Revision History
2. Introduction
3. Electrical Characteristics

Confidential—Provide to Finemost From Sunitec 13th, Sep 2024



1.Revision History

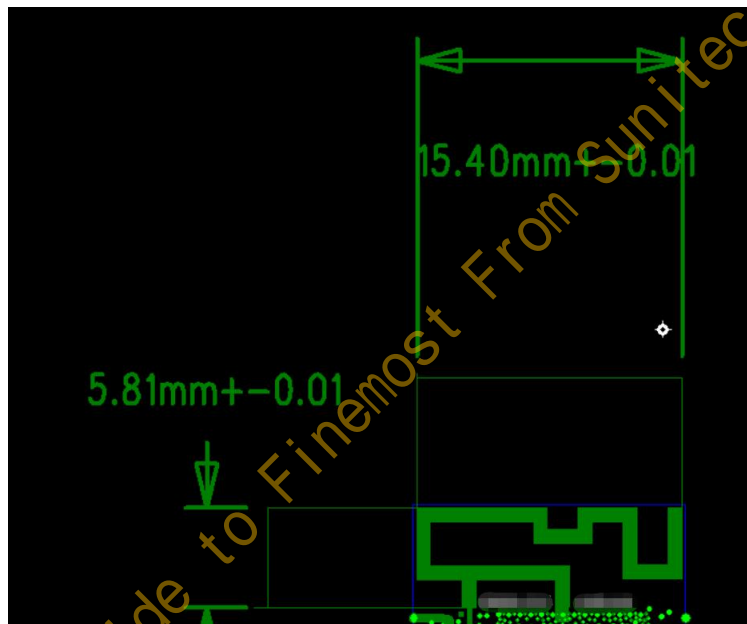
Rev.No	Issued Date	Description	Summary
V1.0	10-Sep-23	initial release	

2. Introduction

2.1 Introduction of Product

This product is a Bluetooth antenna with Layout on PCB

2.2 Dimension



3. Electrical Characteristics

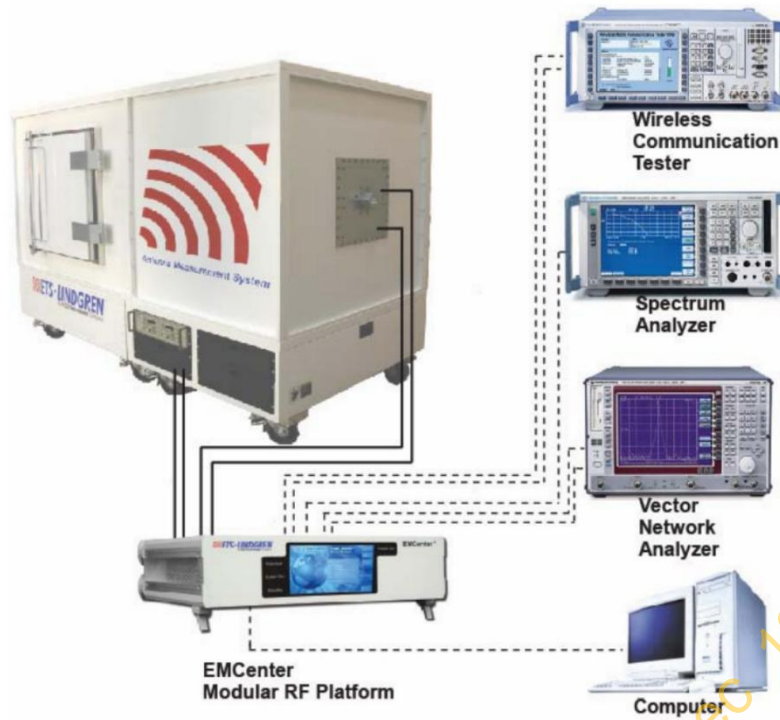
3.1 Test equipment:

VECTOR NETWORK ANALYZER

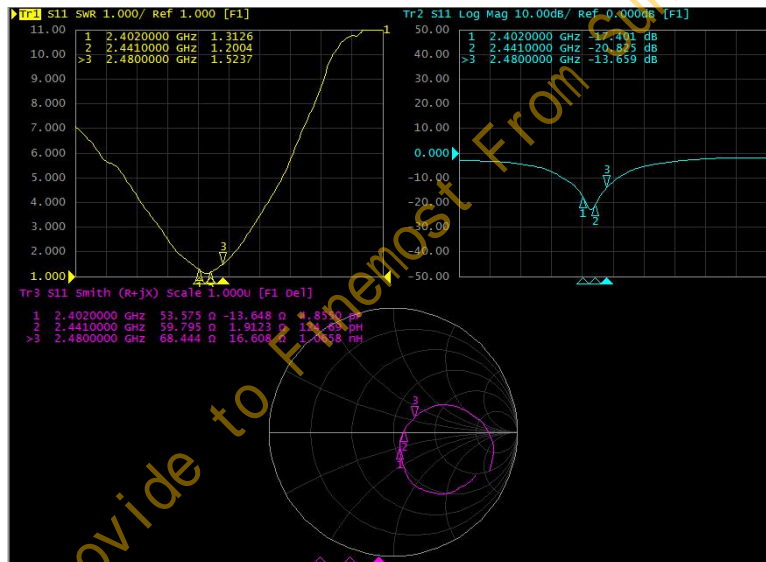
Agilent E5071c

Antenna Measurement System

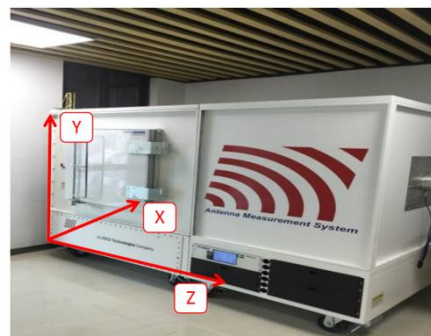
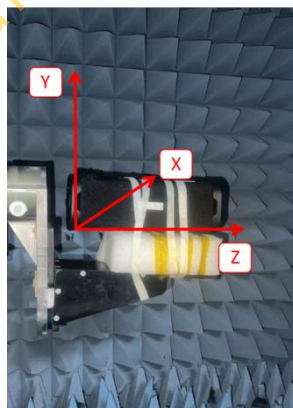
ETS-Lindgren Antenna Measurement System



3.2 Antenna S11 parameters



3.3 Antenna Test Settings:



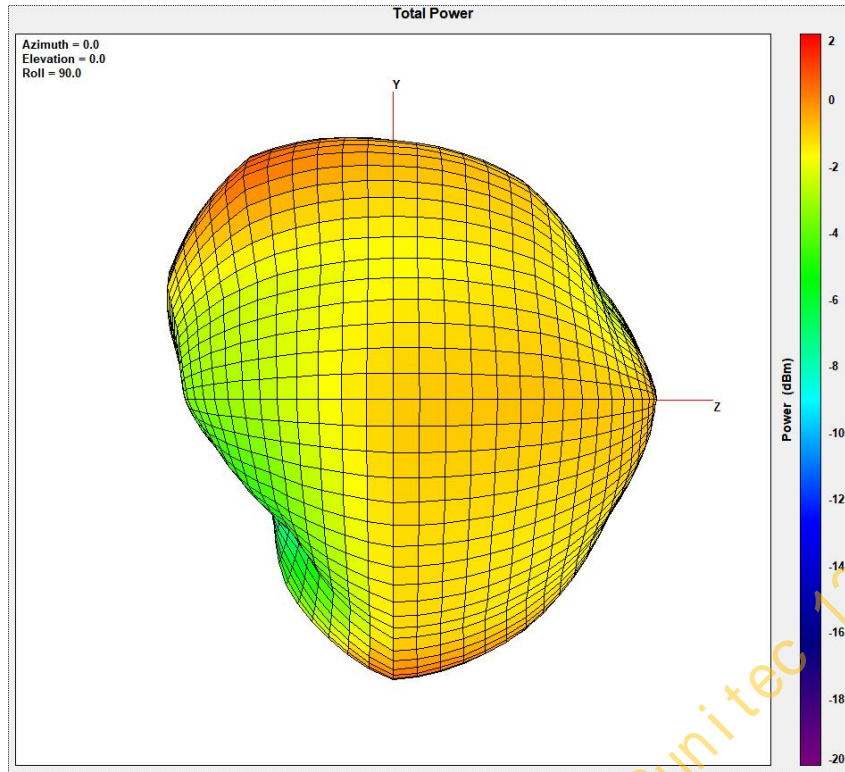
3.4 3D Radiation Pattern :

THIS DRAWINGS AND SPECIFICATIONS ARE THE PROPERTY OF SUNITEC ENTERPRISE CO.,LTD.AND SHALL NOT BE REPRODUCED OR USED AS THE BASIS FOR THE MANUFACTURE OR SALE OF APPARATUS OR DEVICES WITHOUT PERMISSION

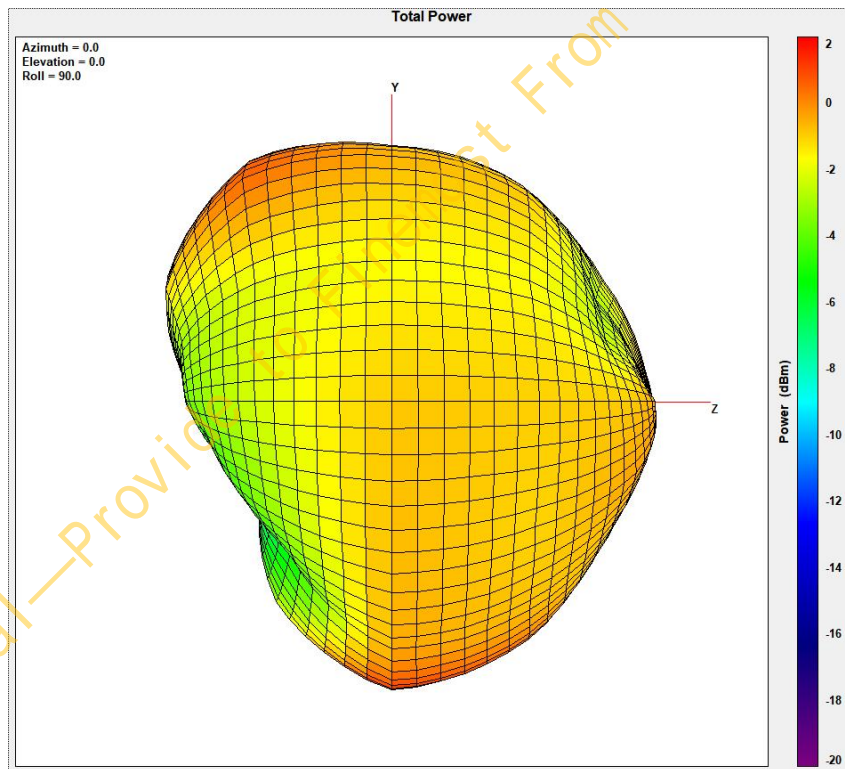


深圳市丰禾原电子科技有限公司
SUNITEC ENTERPRISE CO.,LTD.

2402MHz



2441MHz

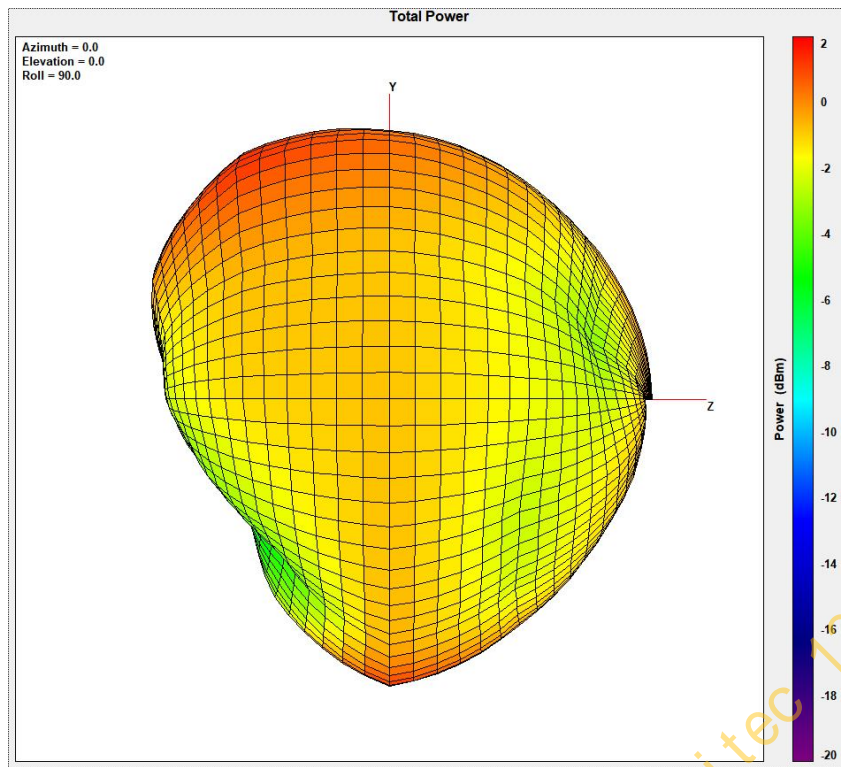


2480MHz

THIS DRAWINGS AND SPECIFICATIONS ARE THE PROPERTY OF SUNITEC ENTERPRISE CO.,LTD.AND SHALL NOT BE REPRODUCED OR USED AS THE BASIS FOR THE MANUFACTURE OR SALE OF APPARATUS OR DEVICES WITHOUT PERMISSION



深圳市丰禾原电子科技有限公司
SUNITEC ENTERPRISE CO.,LTD.



3.5 Electrical Characteristics:

Antenna Model Name	PCB Layout Antenna
Working Frequency Range	2450 ± 50MHz
Impedance	50Ω
Max Efficiency(%)	60.38%@2464MHz
Max peak Gain(dBi)	1.77dBi@2470MHz

Frequency(MHz)	Efficiency (%)	Peak Gain (dBi)
2402	55.88	0.95
2441	55.80	1.48
2480	57.20	1.59