

YY-2953 Basic Operations

Charging

1. Set the headset into the charging case.
2. Connect the charging case to an AC outlet.

Use the supplied USB Type-C cable and a commercially available USB AC adaptor.

The indicator (orange) on the charging case lights up, and charging starts on the headset and the charging case.

When charging of the headset and the charging case is complete, the indicator (orange) on the charging case turns off automatically. Remove the USB Type-C cable.

Wearing the headset

1. Hold the headset with your fingers.

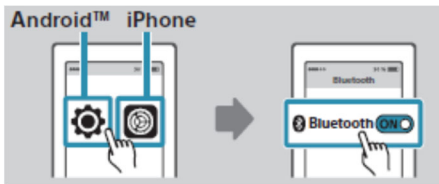


2. Extend your earlobe down with one hand and put the headphones in your ear.



Pairing and Connecting to Bluetooth devices

1. Put the headset into the charging case.
2. Open the cover of the case, then hold the Pairing button on the cover for 7 seconds.
3. Remove the headset from the case and wear it.
4. Set Bluetooth function to ON on your Android smartphone/iPhone.







5. Touch [YY2953]

You will hear the voice guidance say, “Bluetooth connected”, from both headset units.

Listening to music via a Bluetooth connection

1. Wear the headset.
2. Operate the touch sensor of the headset or around the ear.

	Tap the touch sensor on the right twice
	Tap the touch sensor on the right 3 times
	Tap the touch sensor on the left twice
	Tap the touch sensor on the left 3 times

Making phone calls

1. Connect the headset to a smartphone or mobile phone via Bluetooth connection beforehand.
2. When you hear a ring tone, tap the touch sensor on the left or right unit of the headset twice (with an interval of about 0.3 seconds) and receive the call.
3. When you finish talking, tap the touch sensor on the left or right unit of the headset twice (with an interval of about 0.3 seconds) to end the call.

To reject a call

When you hear a ring tone, tap the touch sensor on the left or right unit of the headset three times.

Using the voice assist function

1. Put the headset units into your ears and connect the headset to the smartphone via Bluetooth connection.
2. Tap the touch sensor on the left or right unit of the headset twice to use the voice assist function.

To cancel the function, tap the touch sensor on the left or right unit of the headset 3 times.