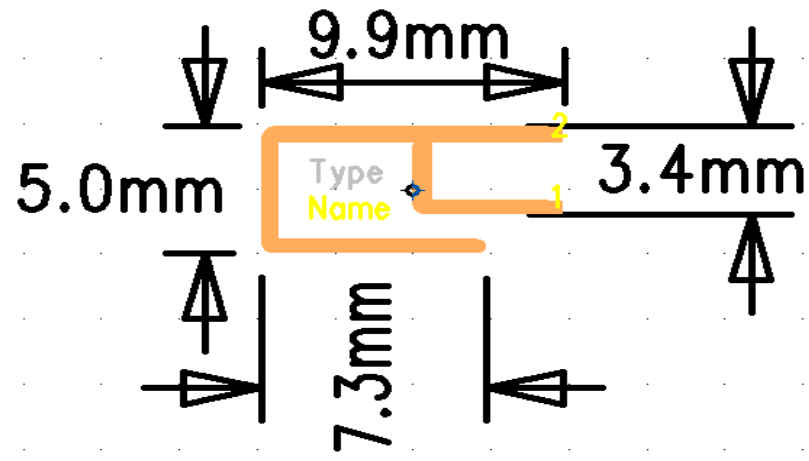
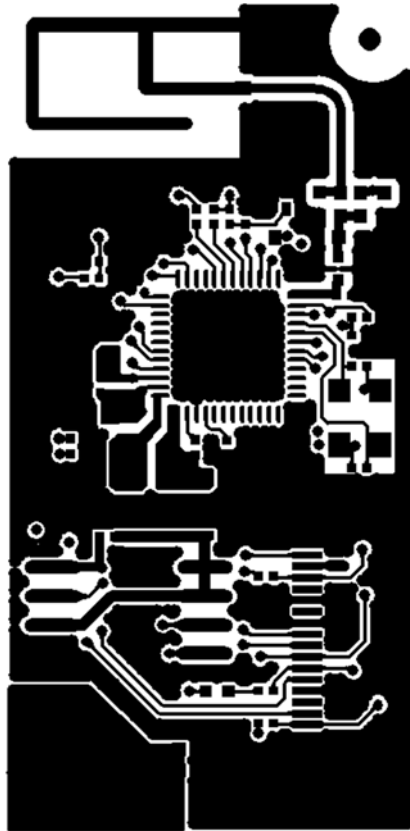


ANTENNA SPECIFICATION



远德电子 (深圳) 有限公司

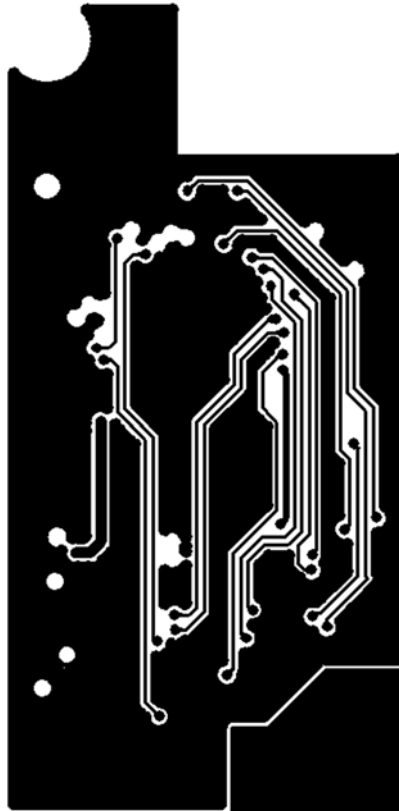
Frequency ID	1	2	3	4	5	6	7	8	9	10	11
Frequency (MHz)	2400.0	2410.0	2420.0	2430.0	2440.0	2450.0	2460.0	2470.0	2480.0	2490.0	2500.0
Efficiency (dBi)	-5.32	-5.14	-4.82	-4.66	-4.47	-4.44	-4.27	-4.19	-4.17	-4.21	-4.24
Gain (dBi)	0.97	1.28	1.59	1.67	1.99	1.94	2.10	1.93	1.91	1.69	1.71
Efficiency (%)	29.35	30.60	32.93	34.17	35.69	35.94	37.40	38.10	38.32	37.94	37.64
Directivity (dB)	6.29	6.42	6.42	6.34	6.47	6.38	6.37	6.12	6.07	5.90	5.96
Peak Gain Position (Theta)	62.00	65.00	66.00	65.00	66.00	65.00	65.00	65.00	64.00	65.00	65.00
Peak Gain Position (Phi)	298.00	295.00	295.00	296.00	296.00	296.00	298.00	301.00	303.00	305.00	306.00
Efficiency ThetaPol (%)	11.45	12.03	12.77	13.47	13.90	14.12	14.32	14.73	14.98	14.70	14.35
Efficiency PhiPol (%)	17.90	18.57	20.16	20.71	21.79	21.82	23.08	23.37	23.34	23.24	23.28
Upper Hem. Efficiency (%)	17.62	18.58	19.92	20.78	21.78	22.12	23.04	23.30	23.52	23.02	23.08
Lower Hem. Efficiency (%)	11.74	12.02	13.01	13.39	13.91	13.82	14.35	14.80	14.79	14.92	14.56



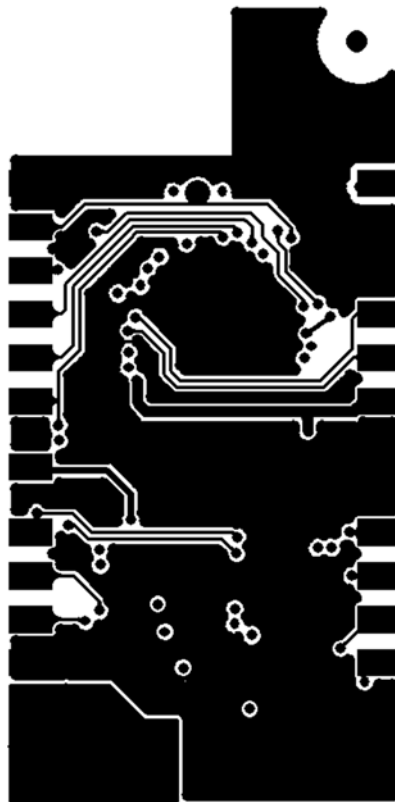
Top Routing



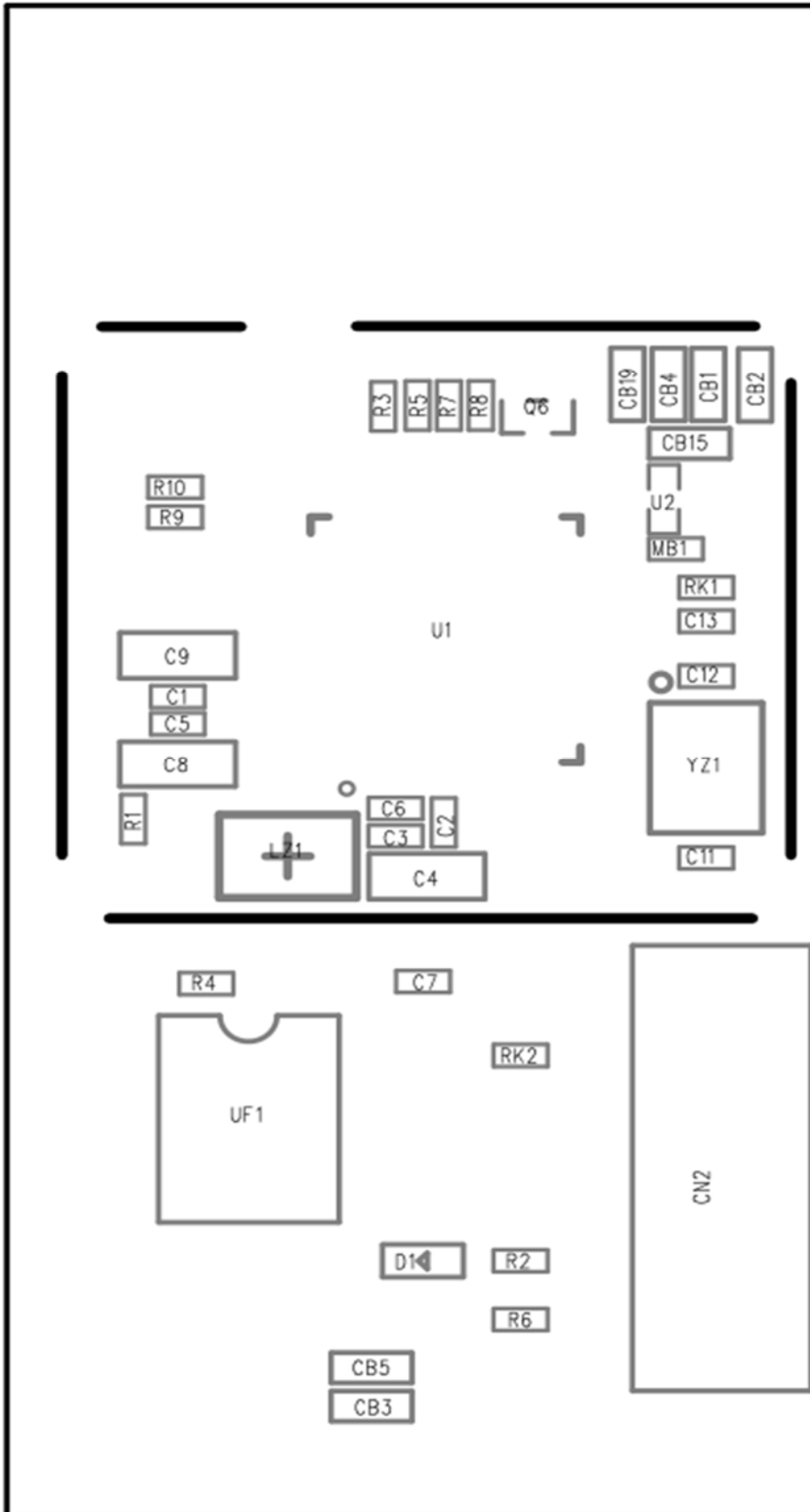
Layer 2 Routing



Layer 3 Routing



Bottom Routing



Top Silkscreen

RFO		GND2
GND3	105	ORX
GND		WIO1
DP		CMD
DM		CLK
BAT		DAT
GND4		VCC
INT0		1RX
MUTE		SPDIF
BT_RST		1TX
TX0		PGND

WE-8853S V1.01

2021/01/12

Bottom Silkscreen