

APPROVAL SHEET

Metal Antenna

2.4~2.5 / 5.15~5.85 GHz Working Frequency

P/N: RFMTA270500NNLB001

Customer : 和碩

Customer 's Part No. : 1415-09DK000

Approval No. :

Issue Date :



品名 : RFMTA270500NNLB001

History List

版本 REV.	修訂者 EDITOR	修訂頁次 PAGE	修訂內容 ITEMS OF CHANGE	申請日期 DATE	生效日期 VALID DATE	ECN 編號 ECN NO.
A0	邱瑩鈺	ALL	New drawing release	2022/02/21	According to the date of PLM Release	N/A
A1	邱瑩鈺	3	新增footprint Top layer	2022/05/12	According to the date of PLM Release	N/A


品名：RFMTA270500NNLB001

1. Explanation of part number :

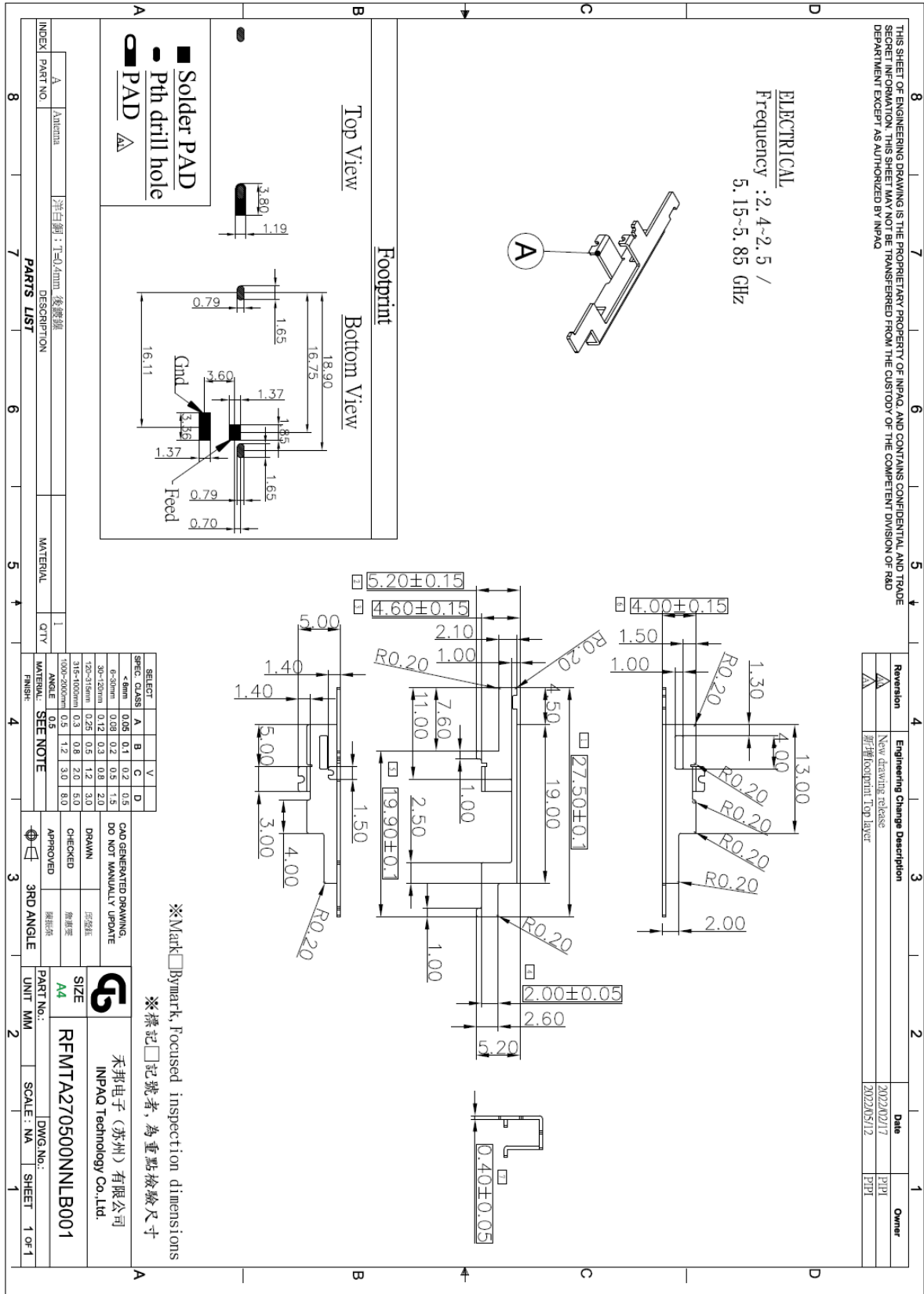
RF	MTA	2705	00	N	N	L	B	0	01
Type Code	Product Code	PCB Dimension (Unit: mm)	Cable Length (unit: cm)	Connector Brand	Type of Connector	Application	Project status	Wire Diameter	Project
RF Device	Antenna	Per 2 digits of length, width e.g.: 1614 Length 160.0mm, Width140.0mm	2 digits for cable length e.g.:20 5G1 : Length 17.5cm 5G2 : Length 17.5cm 2G1 : Length 20.0cm 2G2 : Length 13.0cm BT : Length 7.0cm	A: N C:MCX D:IPEX III E: IPEX IV F: IPEX A13 H: Hirose I: IPEX M: MMCX S: SMA T: TNC U:MURATA N: None	A: Reverse Female B: Reverse Male F: Female M: Male N: None	0: 0GHz 3: 3GHz 6: 6GHz 5: 5GHz A: 2.4GHz ISM band B: GSM 900/1800 dual band G: GPS band L: 2.4/5.X GHz tri-band N: NFC T: LTE band W: WCDMA band	B: MP T:During Test X: Pile Run	0:None 1:∅ 0.81 2:∅ 1.32 3:∅ 1.13 4:Low Loss ∅ 1.13 5:∅ 0.5 6:RG316 7: ∅ 1.37 8:RG178 9:Low Loss ∅ 1.37	01~99 series number

2. Electrical Specification :

Item	Specification
Working Frequency Range	2.4~2.5 / 5.15~5.85 GHz
Operation Temperature	-20°C ~ +65°C

UNLESS OTHER SPECIFIED TOLERANCES ON : X=N/A X.X=N/A X.XX=N/A ANGLES=N/A HOLEDIA=N/A		 INPAQ TECHNOLOGY CO., LTD.
SCALE : N/A	UNIT : mm	
DRAWN BY : 邱瑩鈺	CHECKED BY : 詹惠雯	THIS DRAWINGS AND SPECIFICATIONS ARE THE PROPERTY OF INPAQ TECHNOLOGY CO.,LTD.AND SHALL NOT BE REPRODUCED OR USED AS THE BASIS FOR THE MANUFACTURE OR SALE OF APPARATUS OR DEVICES WITHOUT PERMISSION
DESIGNED BY :	APPROVED BY : 陳振榮	
TITLE : RFMTA270500NNLB001		DOCUMENT NO. ENS070023980-000803513614
		SPEC REV. A1

3. Drawing :



UNLESS OTHER SPECIFIED TOLERANCES ON :
 X=N/A X.X=N/A X.XX=N/A
 ANGLES=N/A HOLEDIA=N/A



INPAQ TECHNOLOGY CO., LTD.

SCALE : N/A UNIT : mm
 DRAWN BY : 邱發鈺 CHECKED BY : 詹惠愛
 DESIGNED BY : APPROVED BY : 陳振榮

THIS DRAWINGS AND SPECIFICATIONS ARE THE PROPERTY OF INPAQ TECHNOLOGY CO.,LTD.AND SHALL NOT BE REPRODUCED OR USED AS THE BASIS FOR THE MANUFACTURE OR SALE OF APPARATUS OR DEVICES WITHOUT PERMISSION

TITLE : RFMTA270500NNLB001 DOCUMENT NO. : ENS070023980-000803513614 SPEC REV. : A1