

# UTX-M40 Internal Structure <1>



Detached the Lower Grip.



Detached the Microphone capsule.

# UTX-M40 Internal Structure <2>



Detached the Antenna cover.



Detached the button frame.

# UTX-M40 Internal Structure <3>



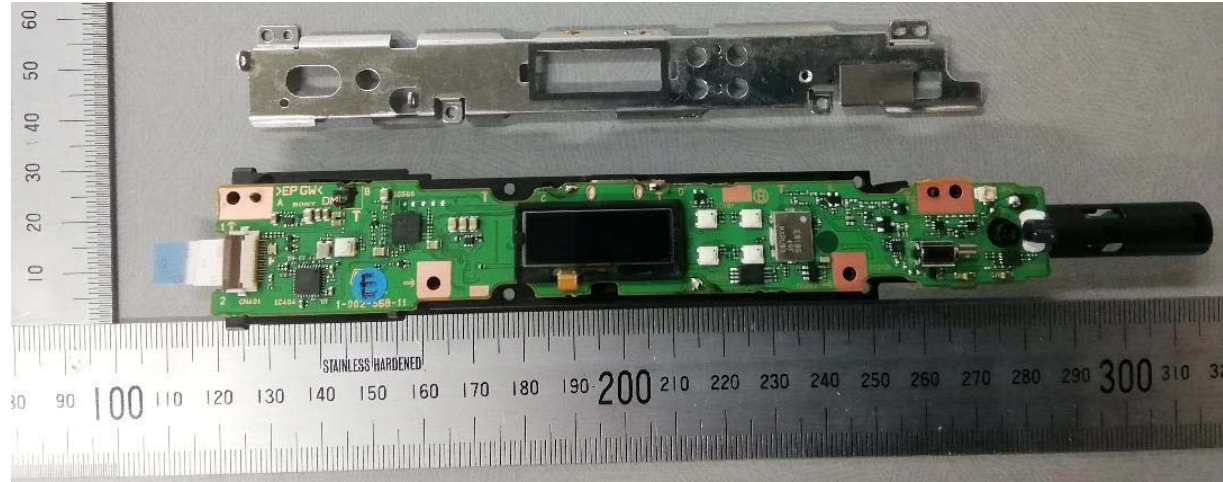
Detached PWB AU-388.



Detached the Upper Grip.



# UTX-M40 Internal Structure <4>

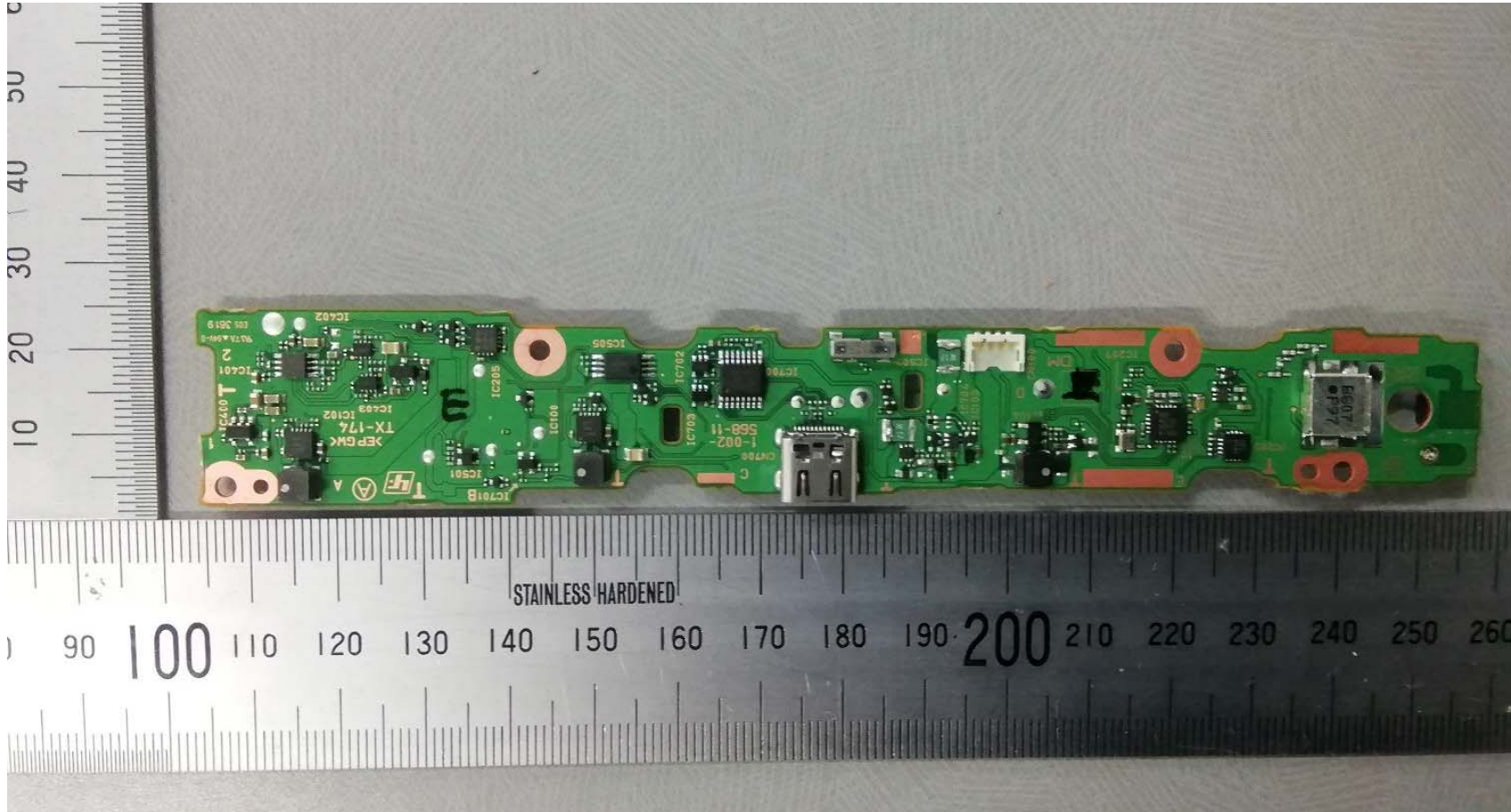


Detached the chassis.



Detached PWB TX-174.

# UTX-M40 Internal Structure <5>

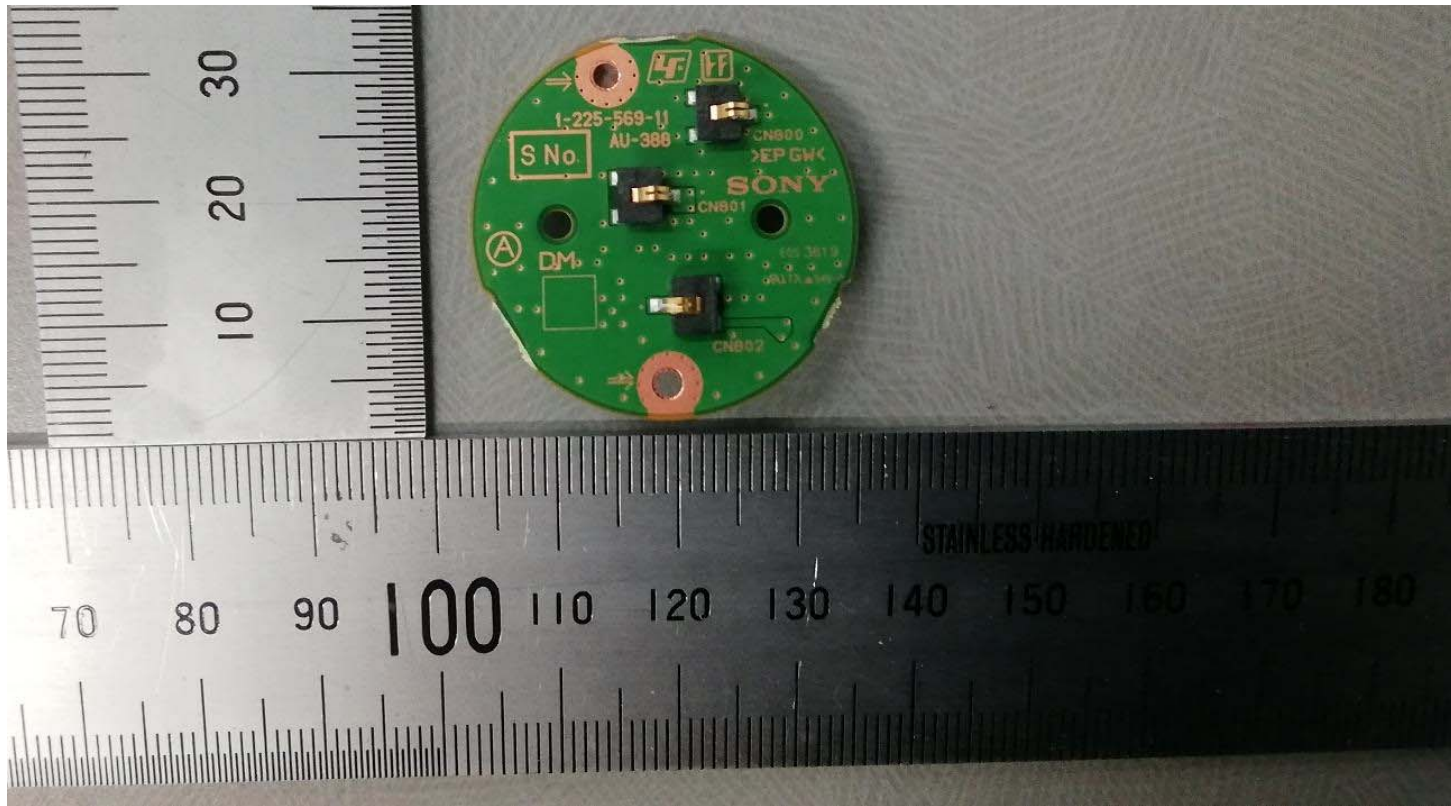


Side A of Board TX-174.



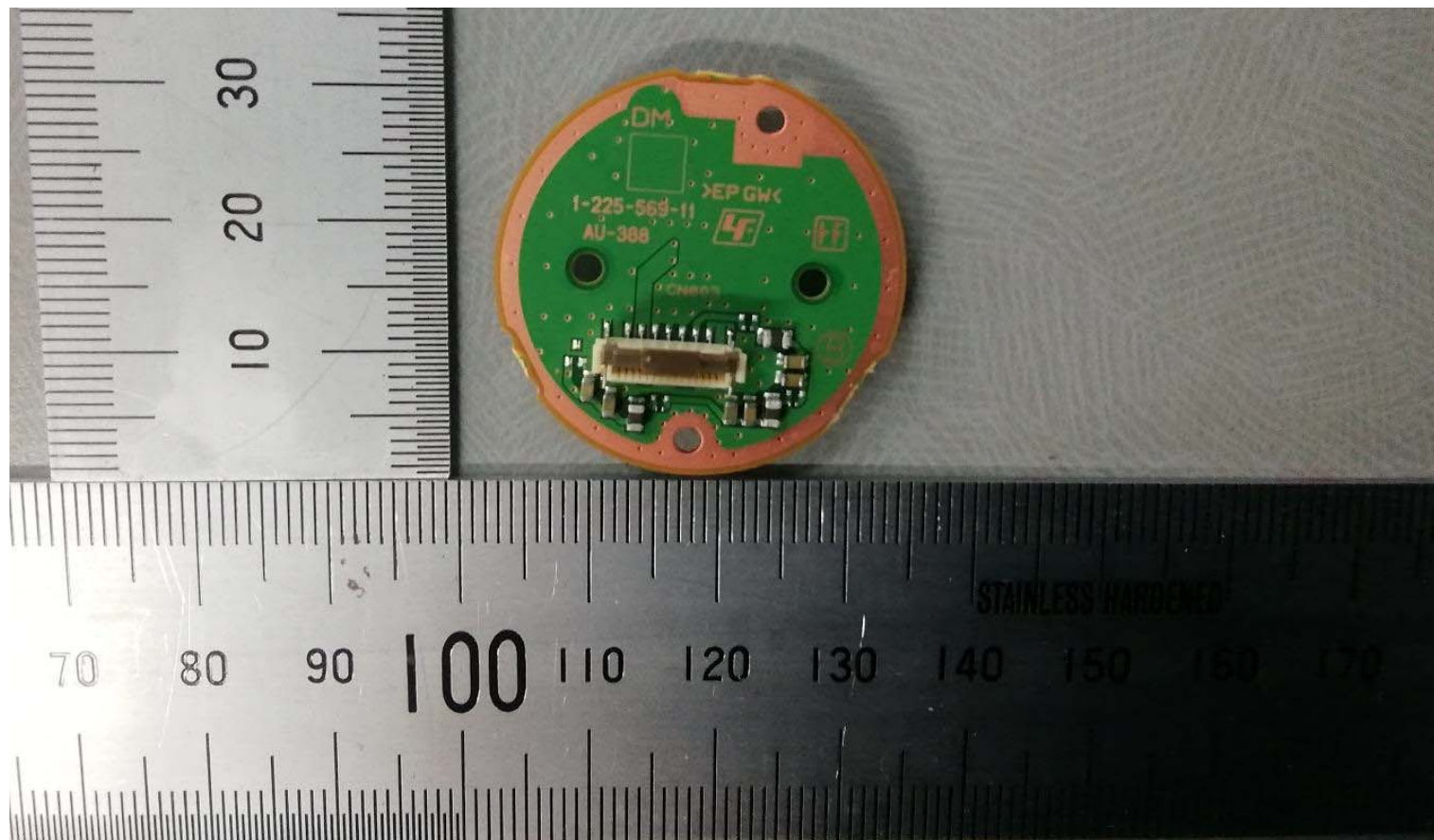


# UTX-M40 Internal Structure <7>



Side A of Board AU-388.

# UTX-M40 Internal Structure <8>



Side B of Board AU-388.