

**APPENDIX 3: Photographs of test setup**

**Conducted Emission**



**Photo 1**



**Photo 2**

---

**UL Japan, Inc.**

**Shonan EMC Lab.**

1-22-3 Megumigaoka, Hiratsuka-shi, Kanagawa-ken, 259-1220 JAPAN

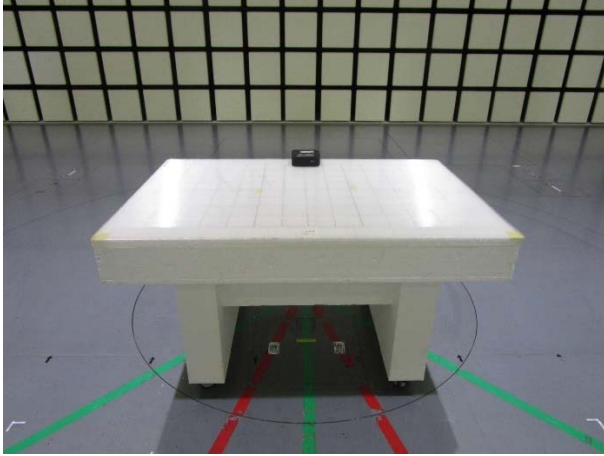
Telephone : +81 463 50 6400

Facsimile : +81 463 50 6401

**Radiated Spurious Emission**

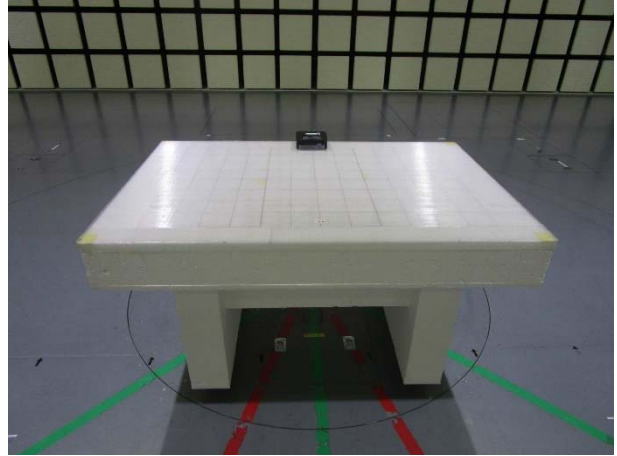
**(WLAN)**

Front

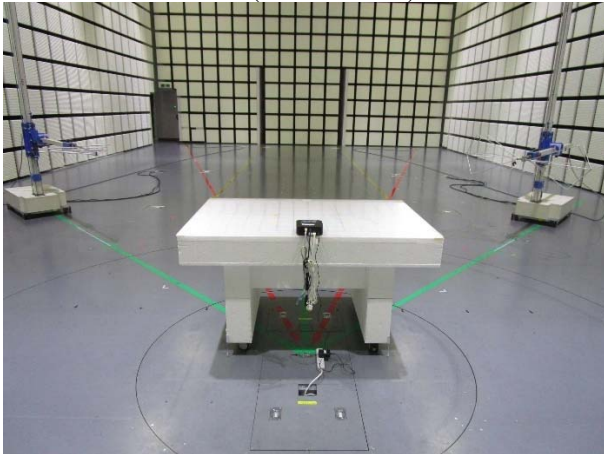


**(BT LE)**

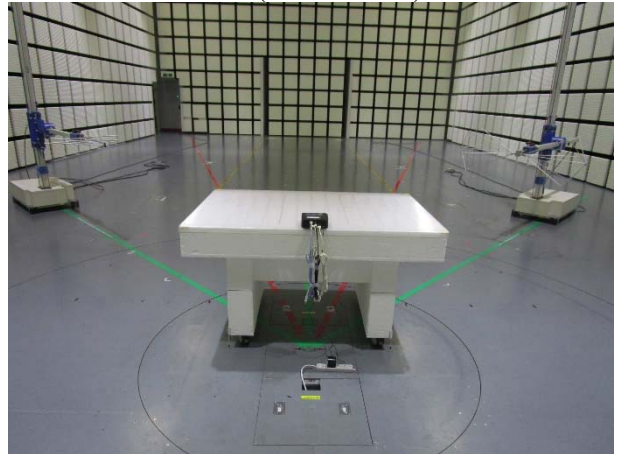
Front



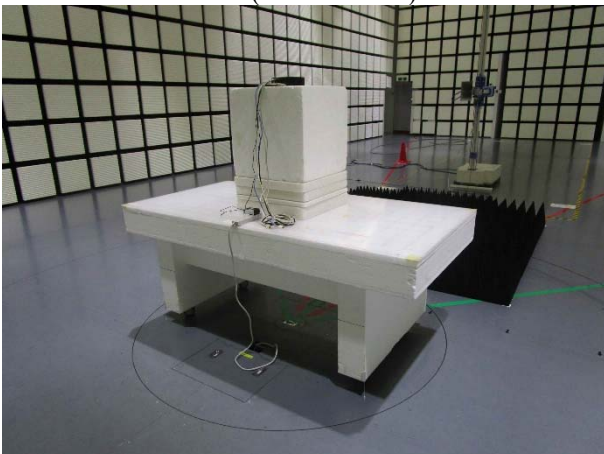
Rear (Below 1 GHz)



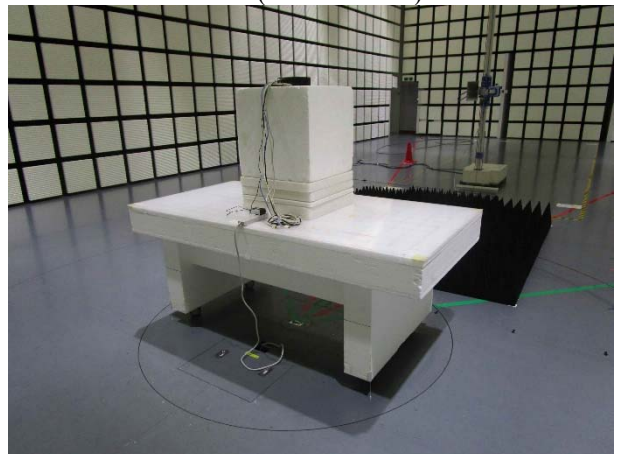
Rear (Below 1 GHz)



Rear (Above 1 GHz)



Rear (Above 1 GHz)



## Antenna Terminal Conducted Tests

WLAN



**Photo 1**



**Photo 2**

---

**UL Japan, Inc.**

**Shonan EMC Lab.**

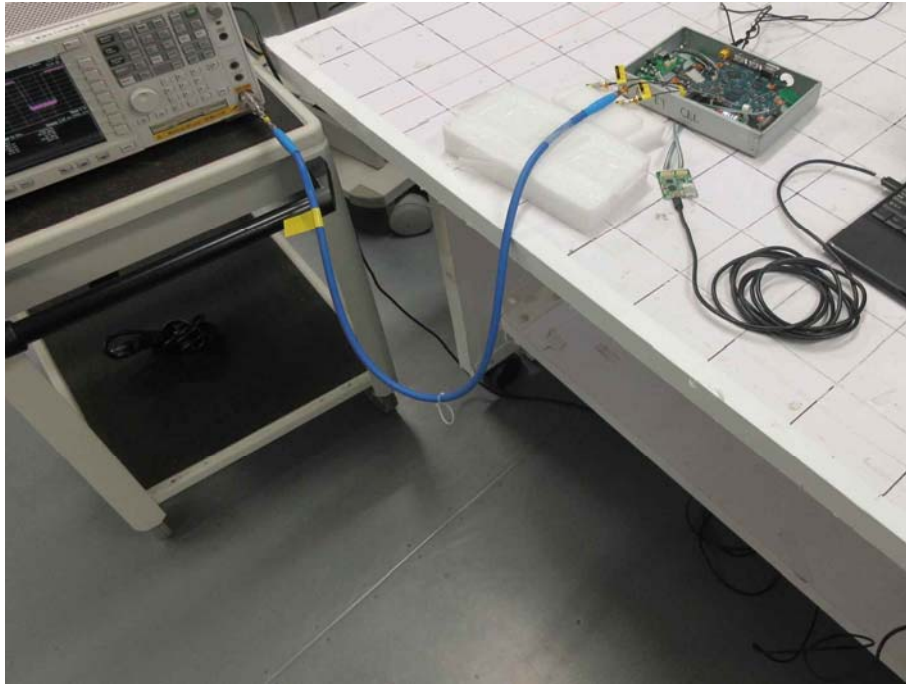
1-22-3 Megumigaoka, Hiratsuka-shi, Kanagawa-ken, 259-1220 JAPAN

Telephone : +81 463 50 6400

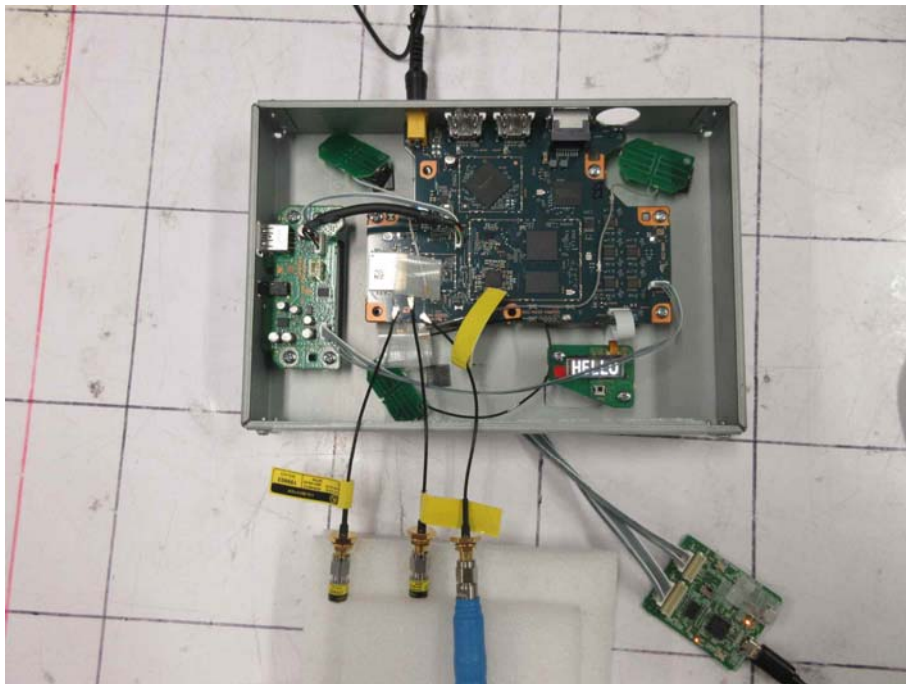
Facsimile : +81 463 50 6401

## Antenna Terminal Conducted Tests

BT LE



**Photo 1**



**Photo 2**

**End of Report**

---

**UL Japan, Inc.**

**Shonan EMC Lab.**

1-22-3 Megumigaoka, Hiratsuka-shi, Kanagawa-ken, 259-1220 JAPAN

Telephone : +81 463 50 6400

Facsimile : +81 463 50 6401