

Quick Start Guide



Please read this manual and **Safety Regulations** carefully before using the product. Keep them in a safe place.



4 - 4 7 0 - 5 3 8 - 1 1

Initial Setup

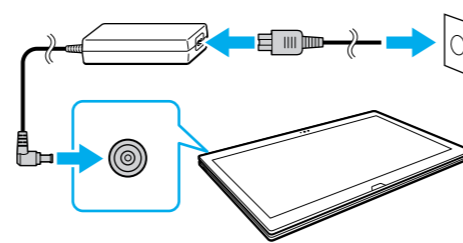
1 Check supplied items

- AC adapter*1
- Power cord
- Digitizer stylus*2
- VGA adapter*3

- *1 The USB port on the AC adapter is intended exclusively for battery charging. Do not use it for any other purpose.
- *2 The digitizer stylus is available for pen-based input. Refer to the on-screen **User Guide** for detailed information on how to use the stylus.
- *3 Not supplied with all models. Availability depends on your computer's specifications.

! Features and specifications may vary and are subject to change without notice.

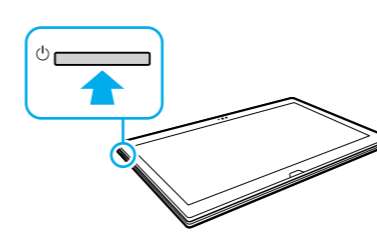
2 Connect AC adapter



Plug the power cord and the AC adapter into an AC outlet and the computer.

! Be sure to connect the AC adapter to your computer when using it for the first few times to ensure the battery becomes fully charged.

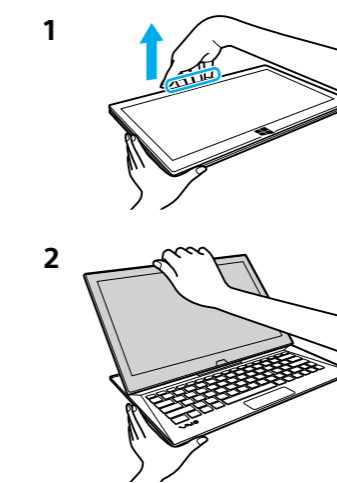
3 Turn on your VAIO® computer



Press and hold down the power button.

! The startup process will take a few minutes. No action is required until the setup window appears.

4 Raise LCD screen



Grasp the top center edge of the LCD screen and raise it to use the keyboard.

5 Connect to the Internet

Connect to the Internet to automatically activate Windows.

- 1 Open the charms by pointing to the top right corner of the screen, then move the pointer down and click the **Settings** charm.
- 2 Click **Network** (the network icon).
- 3 Select the desired network (SSID) and click **Connect**.

! For details on the security key and other settings, refer to the manual of the network device or the information from your Internet service provider.

6 Complete important tasks

- Perform Windows Update and VAIO Update**
 - Click the **Search** charm and **Settings**, then search **Windows Update**.
 - Click the **Search** charm and **Apps**, then search **VAIO Update**.
- Create your Recovery Media**
Press the **ASSIST** button to start **VAIO Care**, then click **Advanced Tools**.
! Recovery Media are not supplied with your computer. Refer to the supplied **Recovery, Backup and Troubleshooting Guide** before creating the Recovery Media.
- Register your computer**
Press the **ASSIST** button to start **VAIO Care**, then click **About your VAIO**.

7 Locate User Guide

An introductory version of the **User Guide** is available on your computer. To update to the complete version, connect to the Internet and follow the steps below.

- 1 Open the charms by pointing to the top right corner of the screen, then move the pointer down and click the **Search** charm.
- 2 Click **Apps**, enter "VAIO Manual" in the search box, and then click the icon. The **User Guide** appears.
- 3 Close the **User Guide**, and after a while, open again by following the same steps. The complete version will be available.

! Be sure to use **VAIO Update** before updating.

8 Sign in with Microsoft account

To download and use apps from Windows Store, you need to use a Microsoft account instead of a local account. You can create a Microsoft account by following the steps below.

- 1 Open the charms by pointing to the top right corner of the screen, then move the pointer down and click the **Settings** charm.
 - 2 Click **Change PC settings, Users, and Switch to a Microsoft account**.
 - 3 Follow the on-screen instructions.
- ! When app updates are available, a number appears on the **Store** tile on the **Start** screen. Click the tile to start **Store** and update Windows Store apps.

Parts and Controls

A Built-in front camera / indicator
Ambient light sensor
LCD screen / touch screen

B (Back)
Micro SIM card slot*
Internal dual microphones
Battery off button
"Memory Stick Duo" / SD memory card combined slot
HDMI output port
! USB port x 2 (Compliant with the USB 3.0 standard. The port with the ⚡ mark supports USB charging.)
Headset compatible headphone jack
DC IN port
Charge indicator

C Power button

H Windows button
Touch pad
Press the bottom left of the touch pad to click.

G Pen stand

F (Bottom)
Touch mark
Built-in rear camera / indicator
A hole for pen hook

E ASSIST button Starts **VAIO Care** while your computer is on - easily tune-up and self support the computer.
Internal stereo speaker
VOL (Volume) buttons

D Internal stereo speaker

* On selected models only.

Care and Handling Tips

Computer Handling

Do not exert pressure on your computer, especially the LCD/touch screen or the AC adapter cable.

Ventilation

Place your computer on hard surfaces such as a desk or table. Proper air circulation around vents is important to prevent overheating.

Liquid Damage

Protect your computer from contact with liquids.

Support websites

- <http://esupport.sony.com/US/VAIO/> (USA)
- <http://www.sony.ca/support/> (Canada: English)
- <http://fr.sony.ca/support/> (Canada: French)
- <http://esupport.sony.com/LA/VAIO/> (Latin American area)
- <http://esupport.sony.com/BR/VAIO/> (Brazil)