

CAUTION: FOR CONTINUED PROTECTION AGAINST RISK OF FIRE REPLACE WITH SAME TYPE FUSE.
AVIS: POUR PROTEGER CONTINUËMENT CONTRE LE RISQUE DE BRÛLE, REMPLACEZ PAR UN FUSIBLE DE MÊME TYPE DE.

F901
14AH 250V
AC INPUT
N

ATTENTION! NE PAS
MELANGER LES PARTIES
PRIMARY

SECONDARY

>EP GW<
POWER AND AMP BOARD
LVA1880CD1-0001
2021/07/13 ETI

THS40900-0001
SSEC BCR-B32130
EB130 1702E

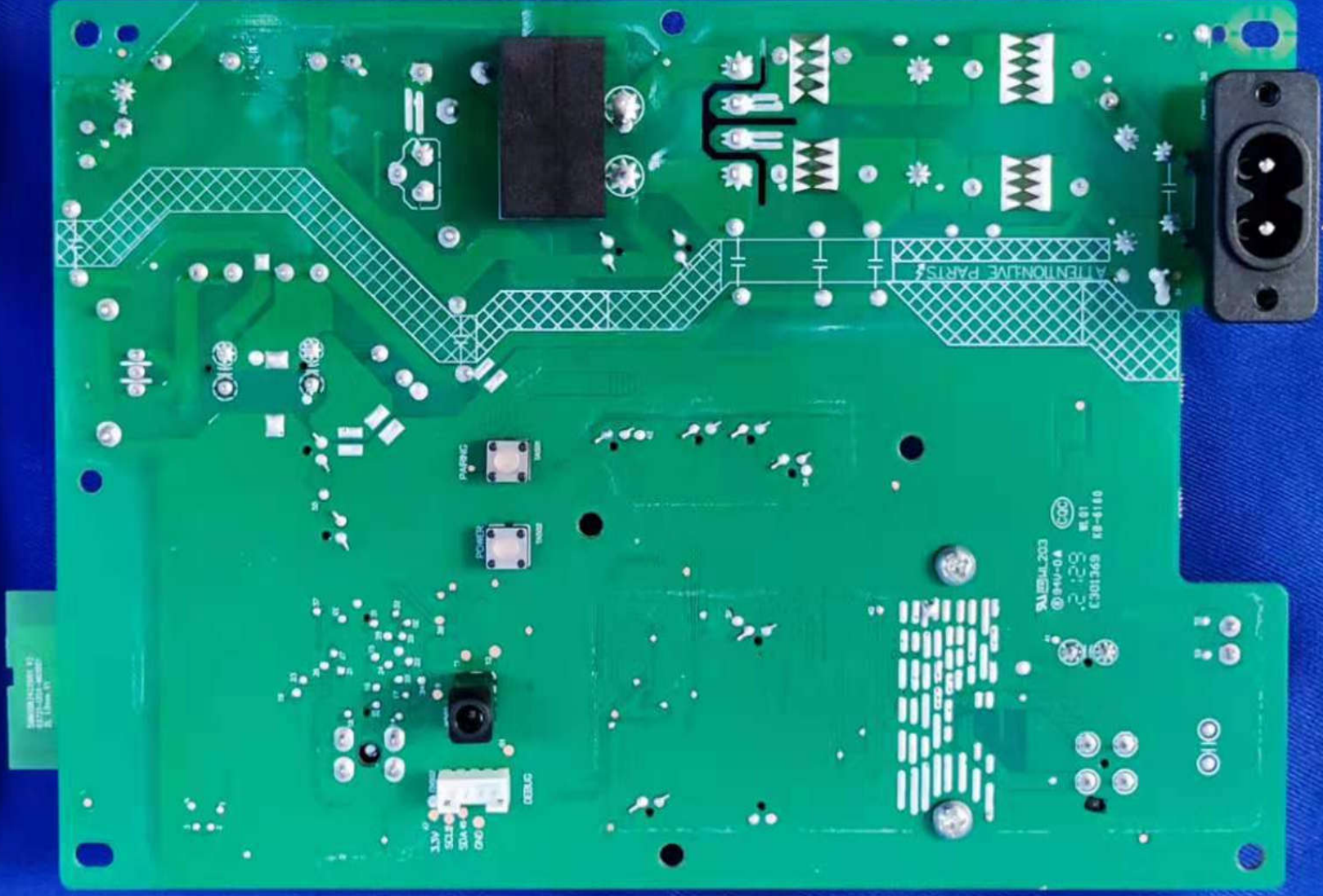
LVA1880CD1-0001
FASTTECH
HT-2400 SW PSU

100µF

OUTPUT

QR CODE
BARCODE
LVA1880CD1-0001
FASTTECH
HT-2400 SW PSU

2



QR Code
RX
Ver:1.07

J161834 000201
WF0134226-0001

Barcode



16.00
DZKw

91

SYNCR
1A3S4
2112
4779197,100

91

456F0
47K053

SS07

1V

2V

NEE-1S-94V-0-2113-R-E98524

PCB components and traces including a central SYNCR chip, various resistors, capacitors, and a large capacitor labeled 456F0 47K053.

SAMSBR34C26RH V2
03721-1354-M01001
2L 1.0mm V1

