

---

### **APPENDIX 3: Photographs of test setup**

#### **Conducted emission**

Front



Side



---

**UL Japan, Inc.**

**Shonan EMC Lab.**

1-22-3 Megumigaoka, Hiratsuka-shi, Kanagawa-ken, 259-1220 JAPAN

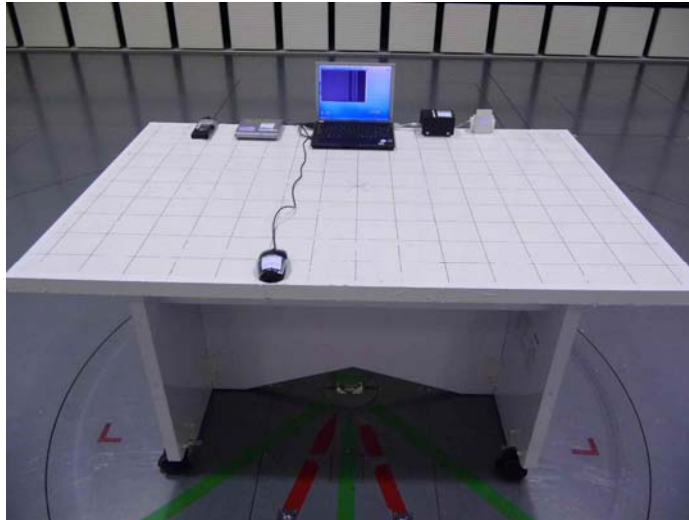
Telephone : +81 463 50 6400

Facsimile : +81 463 50 6401

---

**Radiated emission**

Front

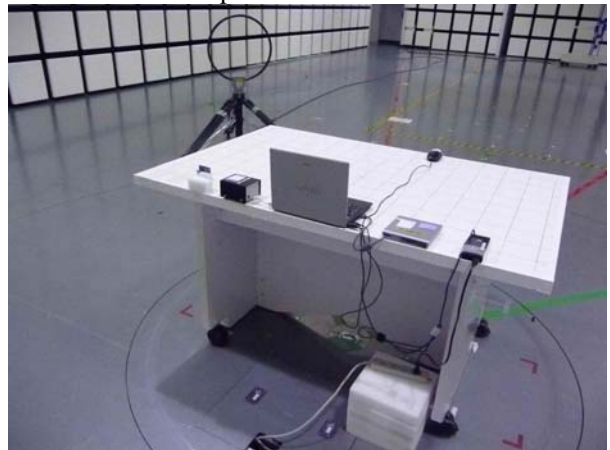


Rear  
9kHz-30MHz

Loop antenna: Horizontal



Loop antenna: Vertical



30-1000MHz



---

**UL Japan, Inc.**

**Shonan EMC Lab.**

1-22-3 Megumigaoka, Hiratsuka-shi, Kanagawa-ken, 259-1220 JAPAN

Telephone : +81 463 50 6400

Facsimile : +81 463 50 6401

**Pre-check of the worst case**

EUT with the card  
X-axis



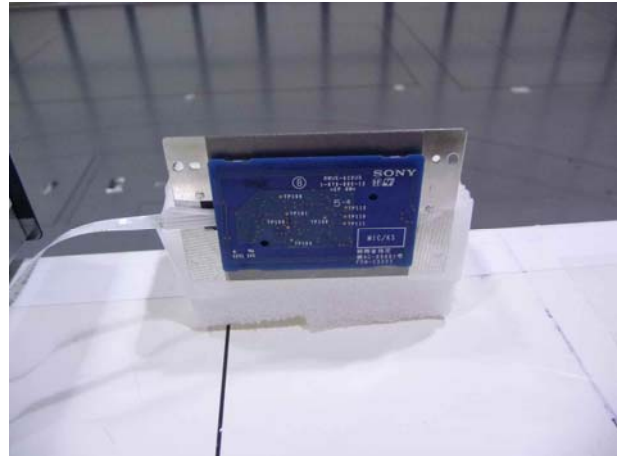
EUT without the card  
X-axis



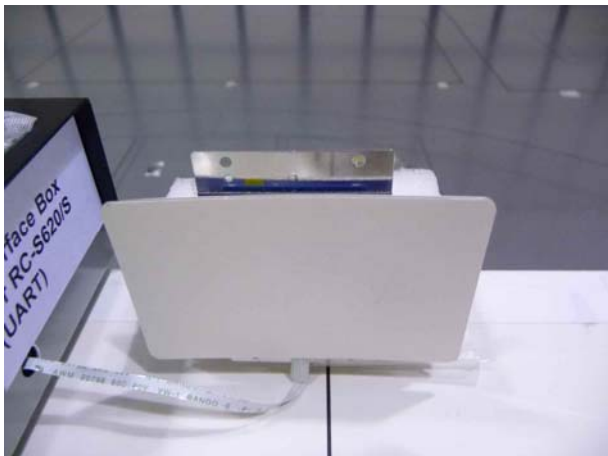
Y-axis



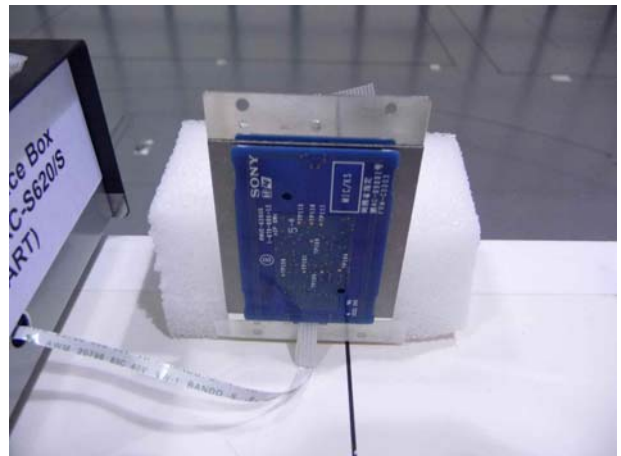
Y-axis



Z-axis



Z-axis



**END OF REPORT**

**UL Japan, Inc.**

**Shonan EMC Lab.**

1-22-3 Megumigaoka, Hiratsuka-shi, Kanagawa-ken, 259-1220 JAPAN

Telephone : +81 463 50 6400

Facsimile : +81 463 50 6401