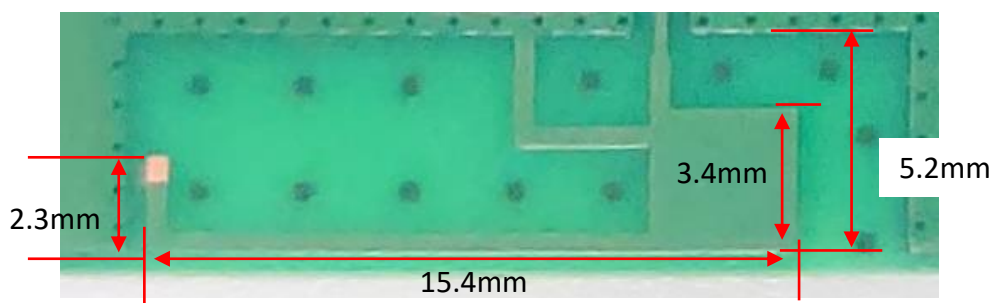


# Specification of Antenna

## 1. Information

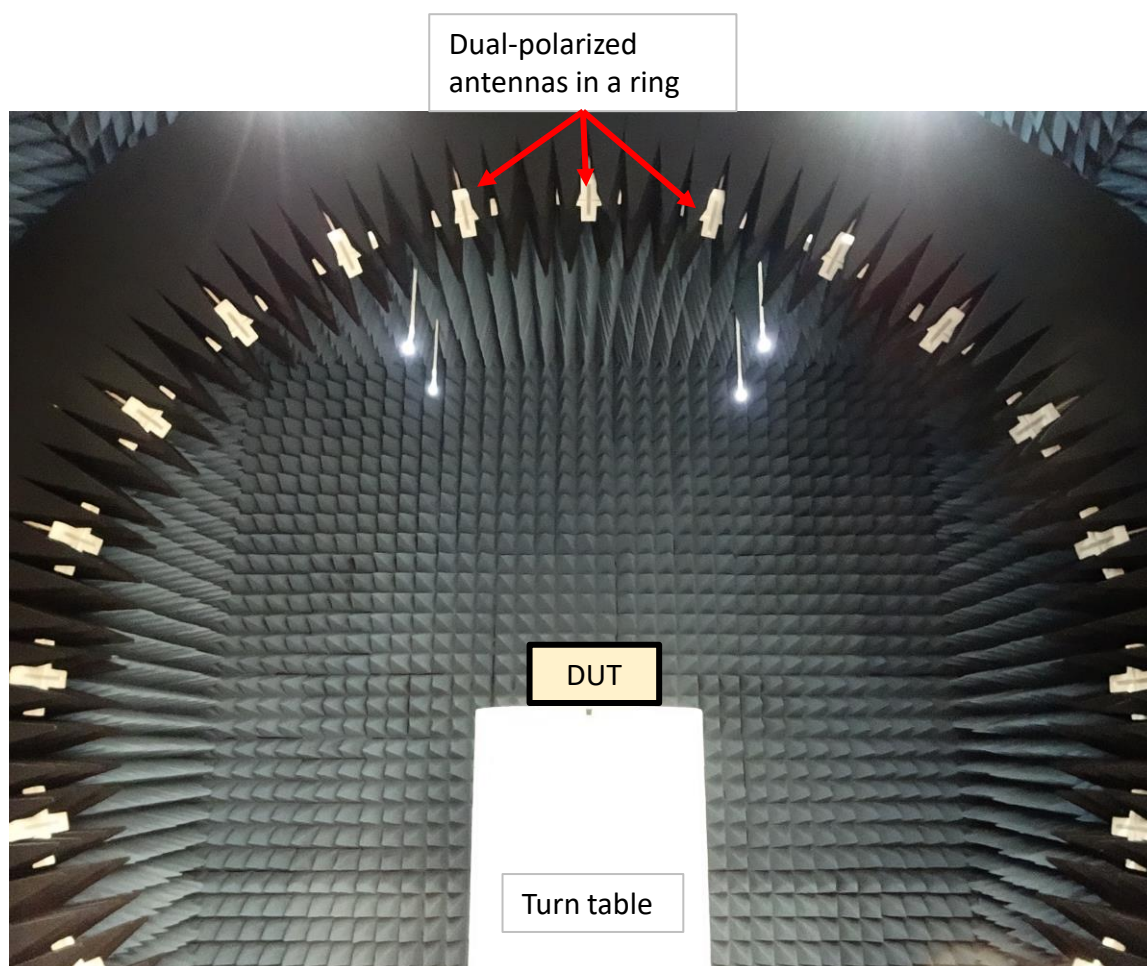
- Antenna Type: IFA
- Antenna name: ANT3(PWB printed antenna)
- Antenna number: Type\_51-301
- Antenna Gain: 2400-2500 MHz 3.0dBi max  
5150-5850 MHz 5.0dBi max
- Outline:



- Measurement Location: Sony Interactive Entertainment Inc. Anechoic Chamber  
1-7-1 Konan Minato-ku Tokyo Japan
- Measurement date : 2022/12
- Test personnel Sony Interactive Entertainment team members  
(Their identities are considered confidential)
- Equipment : ETS-L Antenna Measurement System  
Keysight E5071C(Calibration date: 2022/11)
- Measurement Software: EMQuest Data Acquisition and Analysis Software

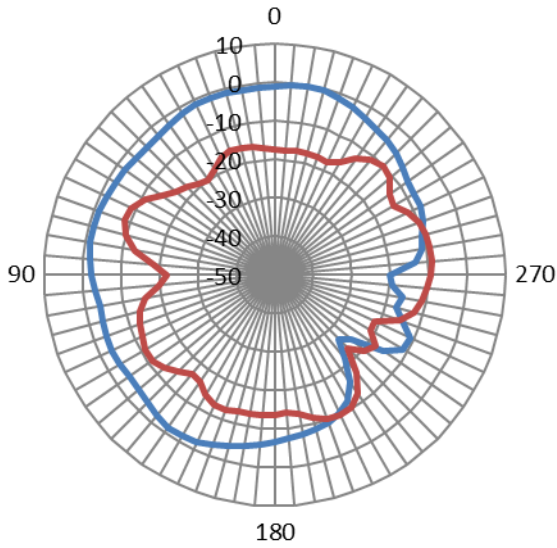
## 2. Test Method

Antenna gain is measured in “ETS-L Antenna Measurement anechoic chamber”. This system consists of Dual-polarized antennas arranged in a ring and RF path switch control box. Network analyzer E5071C is connected to this chamber. DUT is put on a turn table located in center of the chamber as pictured below. Characteristics of the horizontal and vertical polarization are acquired in all direction by switching antennas and rotation of the turn table.

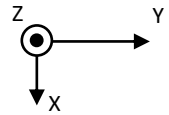
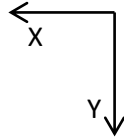


### 3. Radiation Pattern

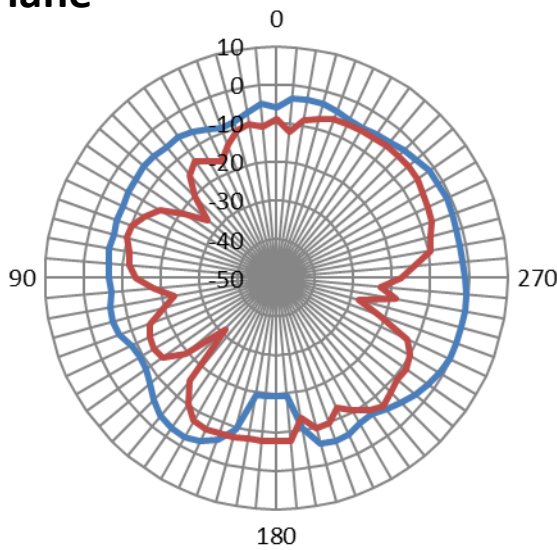
#### XY Plane



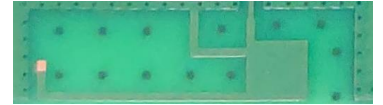
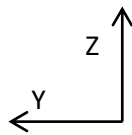
— E Phi : XY  
(2440MHz)  
— E Theta : XY  
(2440MHz)



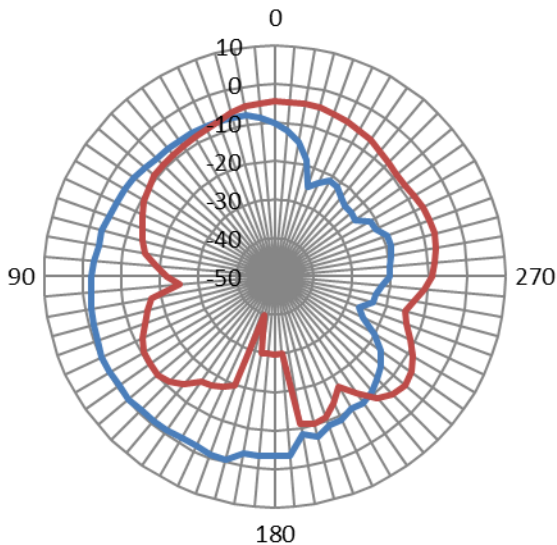
#### YZ Plane



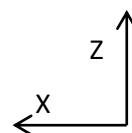
— E Phi : YZ  
(2440MHz)  
— E Theta : YZ  
(2440MHz)



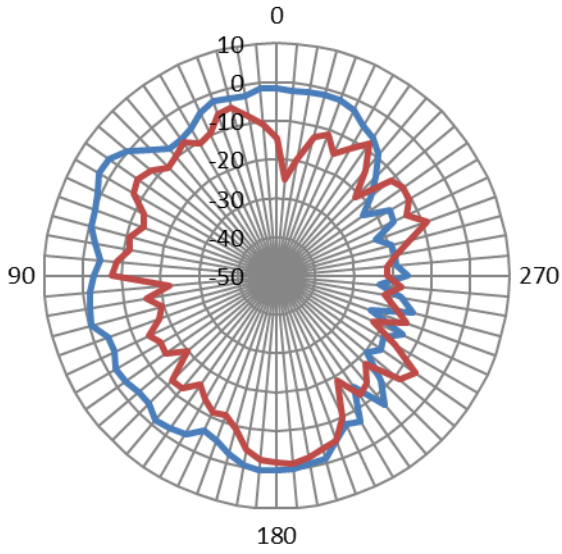
#### ZX Plane



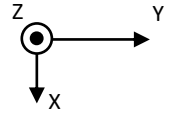
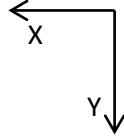
— E Phi : ZX  
(2440MHz)  
— E Theta : ZX  
(2440MHz)



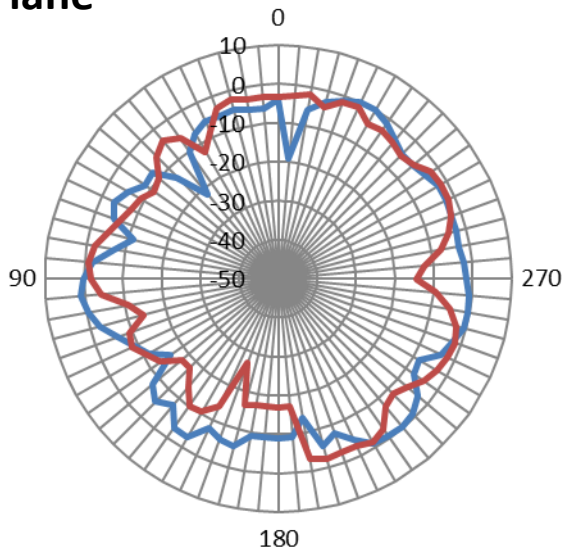
## XY Plane



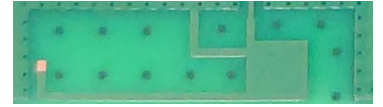
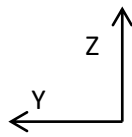
— E Phi : XY  
(5600MHz)  
— E Theta : XY  
(5600MHz)



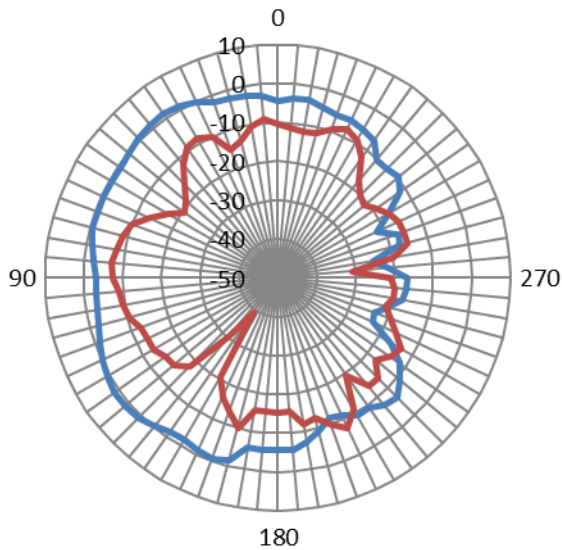
## YZ Plane



— E Phi : YZ  
(5600MHz)  
— E Theta : YZ  
(5600MHz)



## ZX Plane



— E Phi : ZX  
(5600MHz)  
— E Theta : ZX  
(5600MHz)

