

Fig.7: Remove the upper

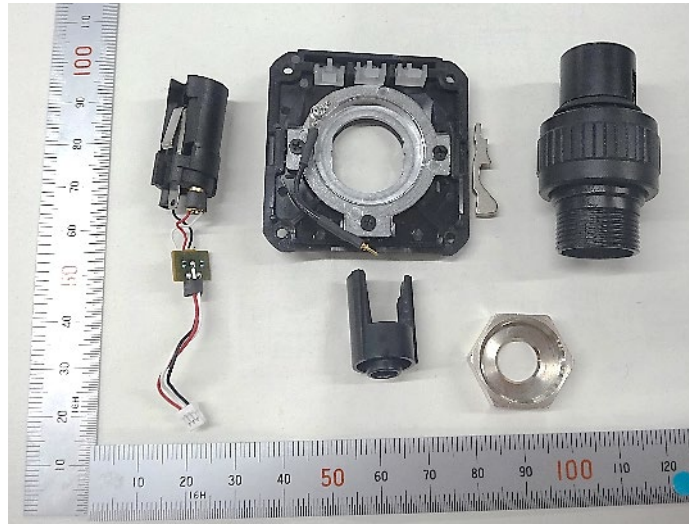


Fig.8: Take upper apart

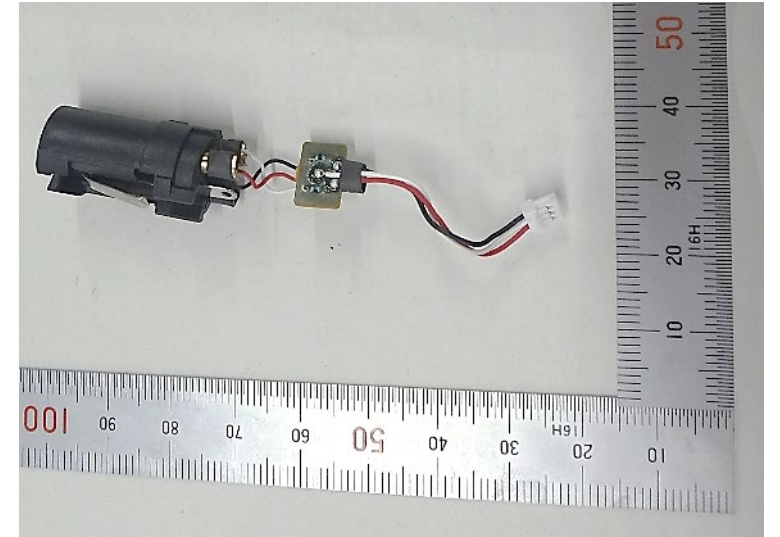


Fig.9 Insert with board CN-4204

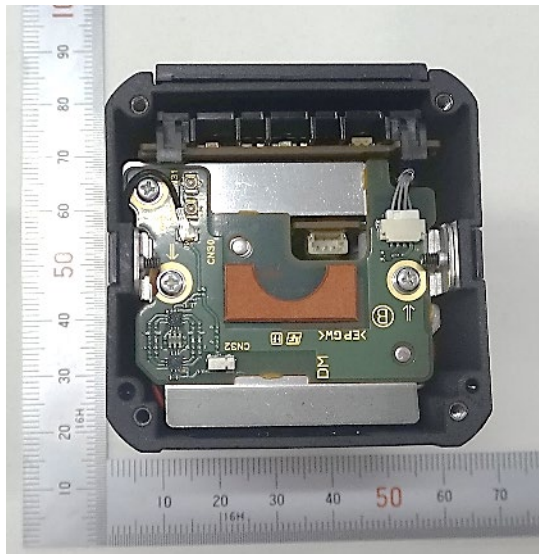


Fig.10: Board RF-183 assembly

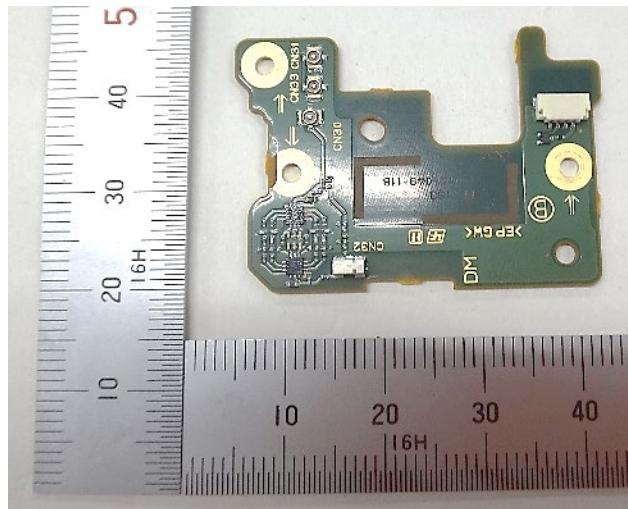


Fig.11: Side B of board RF-183

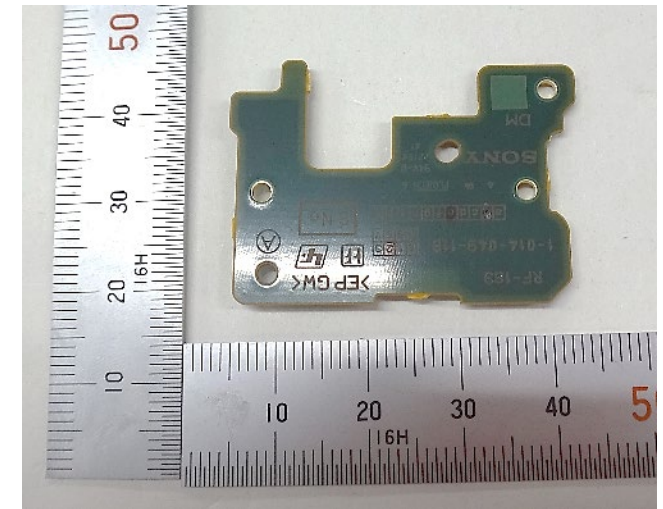


Fig.12: Side A of board RF-183

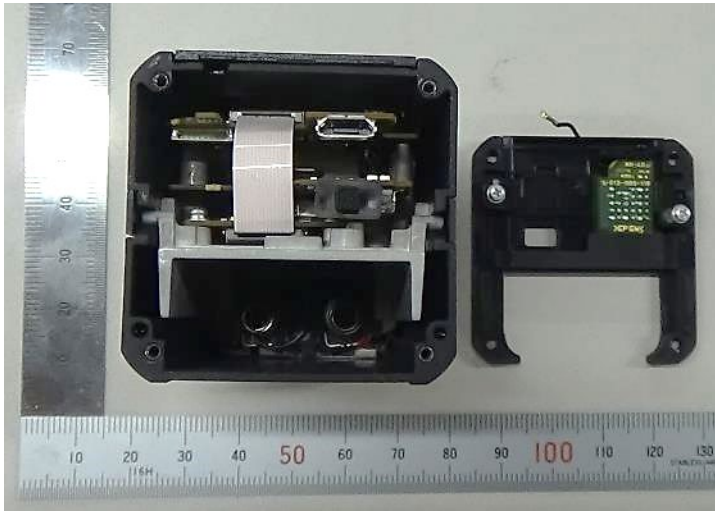


Fig.13: Remove the lower

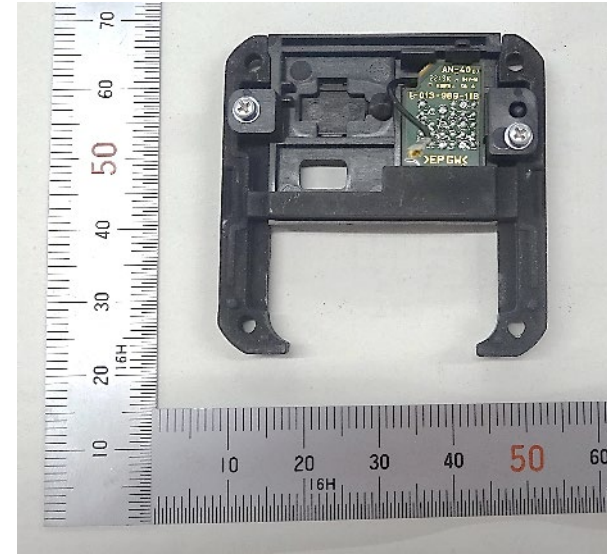


Fig.14 The lower assembly

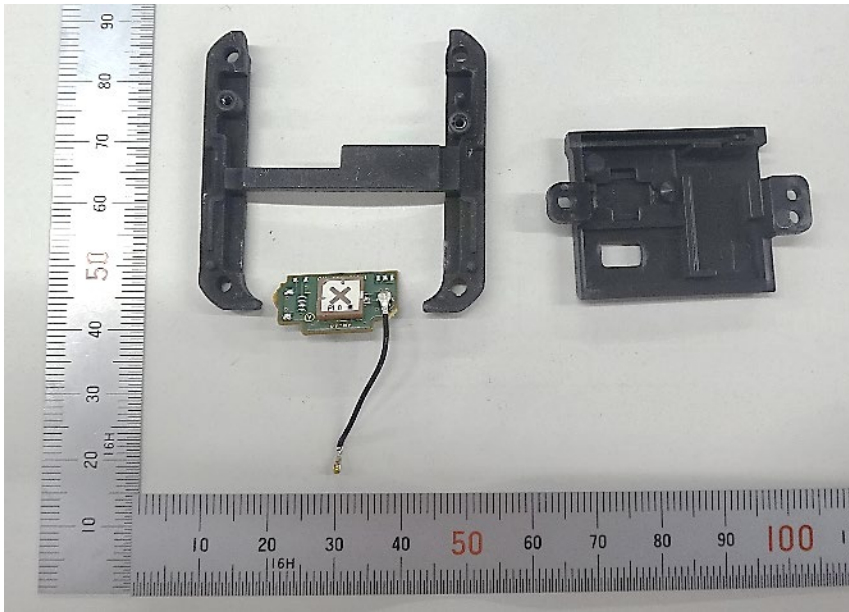


Fig.15 Take lower apart

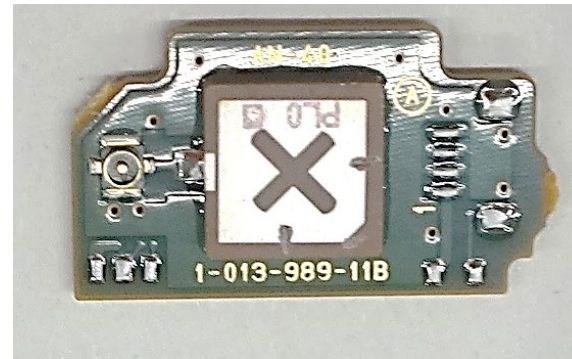


Fig.16:Side A of board AN-40

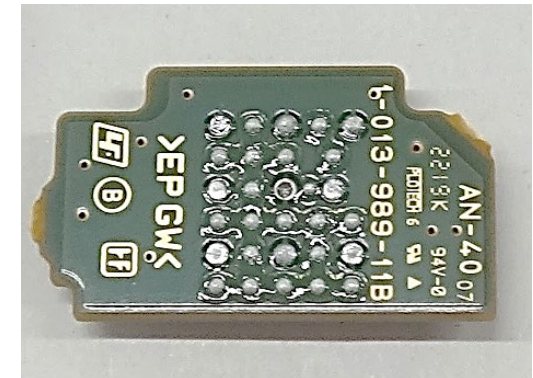


Fig.17:Side B of board AN-40



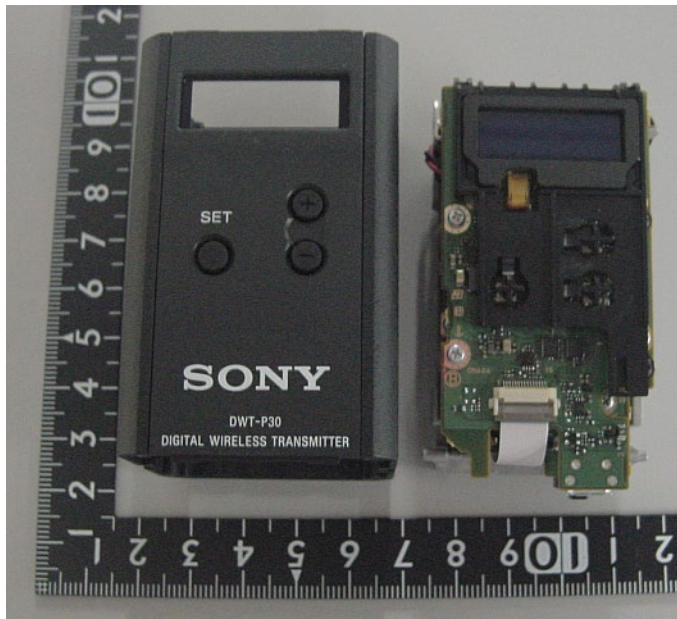


Fig.18: Remove case



Fig.19:Side B of board DPR-404

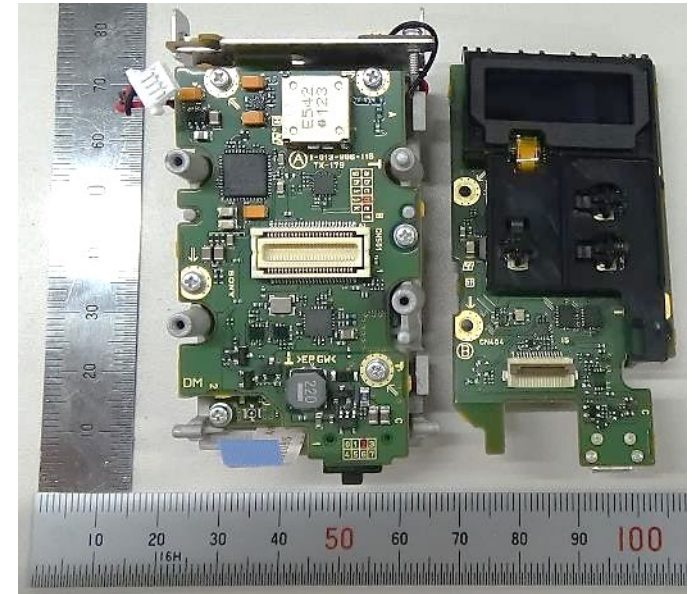


Fig.20:Remove board DPR-404

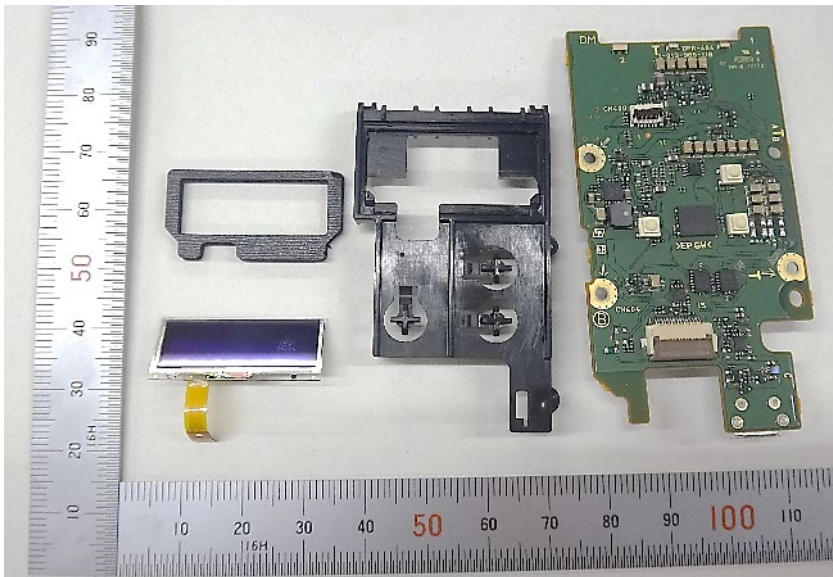


Fig.21:Remove the OLED display

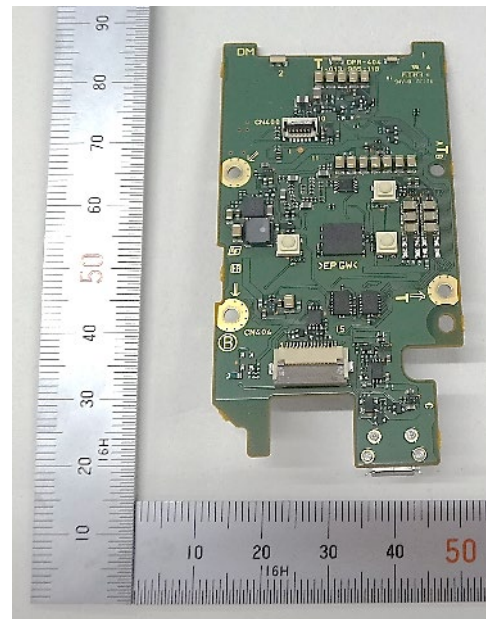


Fig.22:Side B of board DPR-404

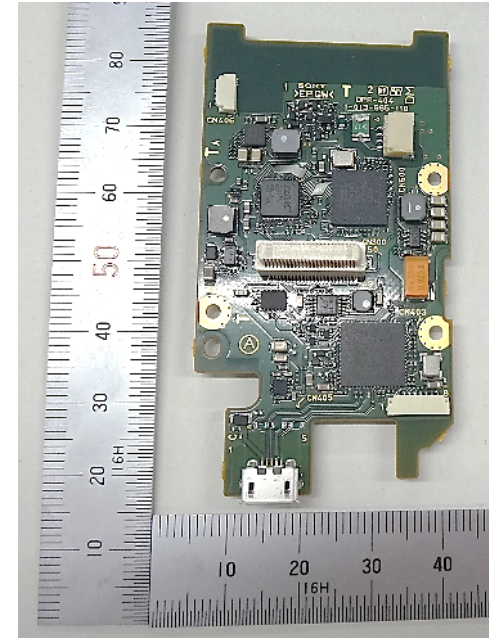


Fig.23:Side A of board DPR-404



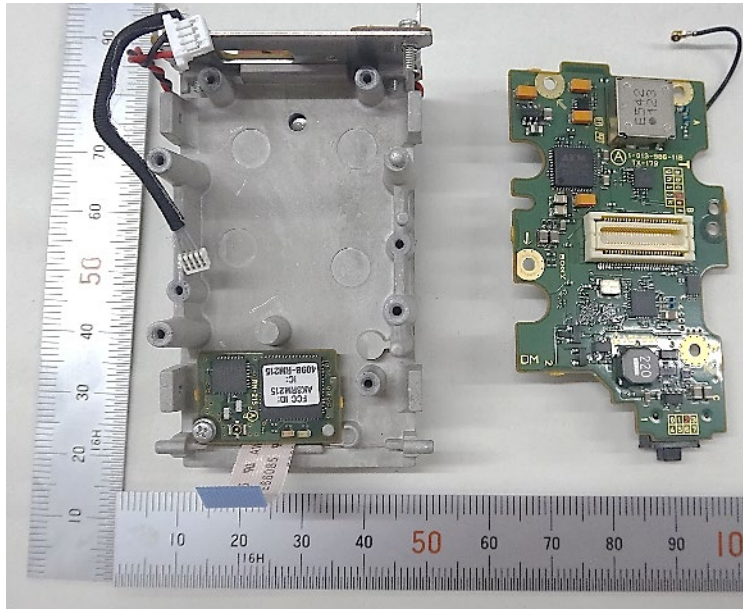


Fig.24 Remove board TX-179

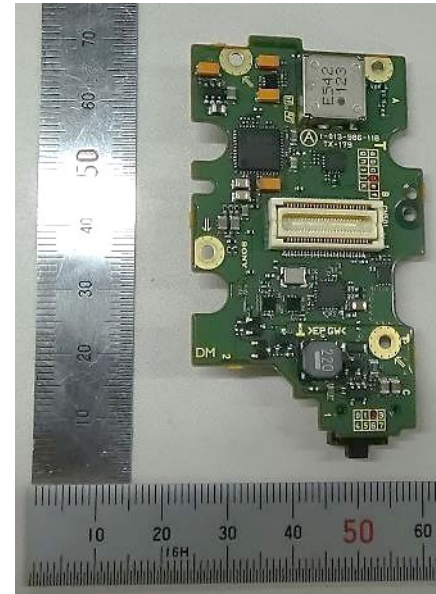


Fig.25 Side A of board TX-179

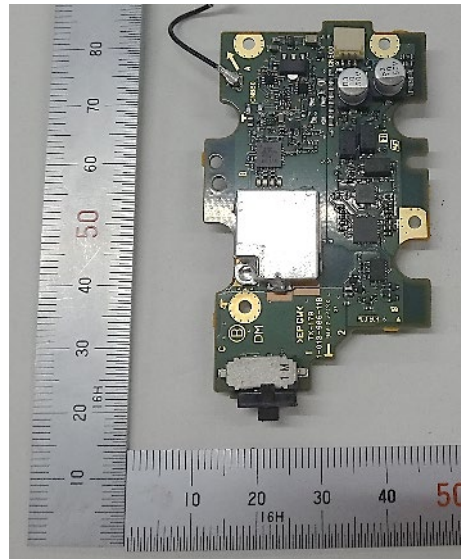


Fig.26 Side B of board TX-179

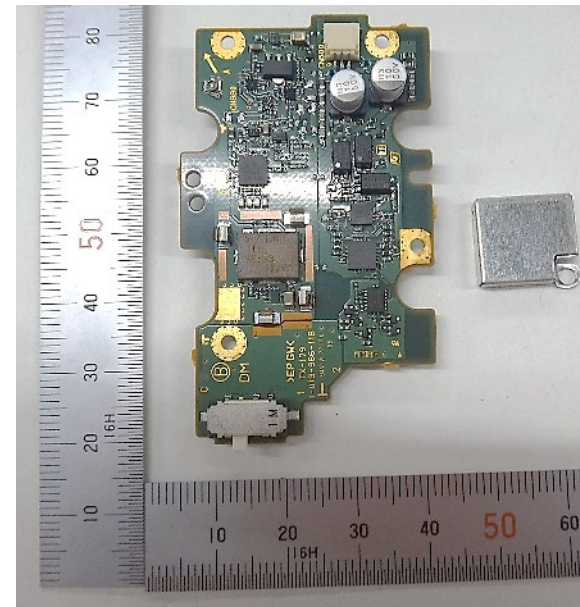


Fig.27 Remove the shield case

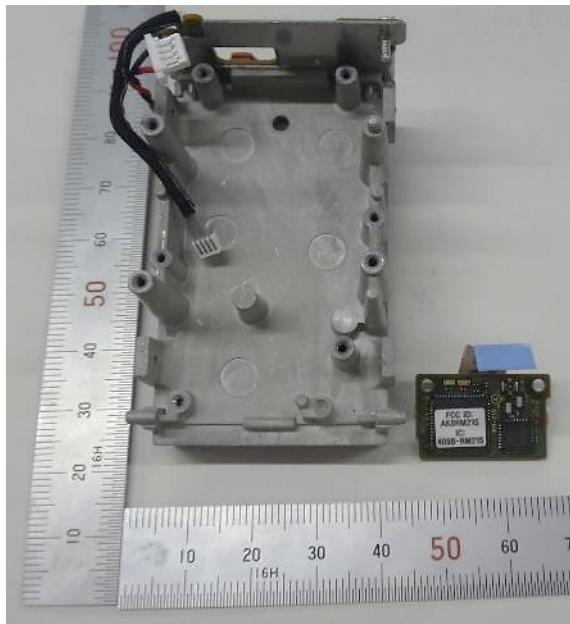


Fig.28 Remove board of RM-215



Fig.29 Side A of board RM-215

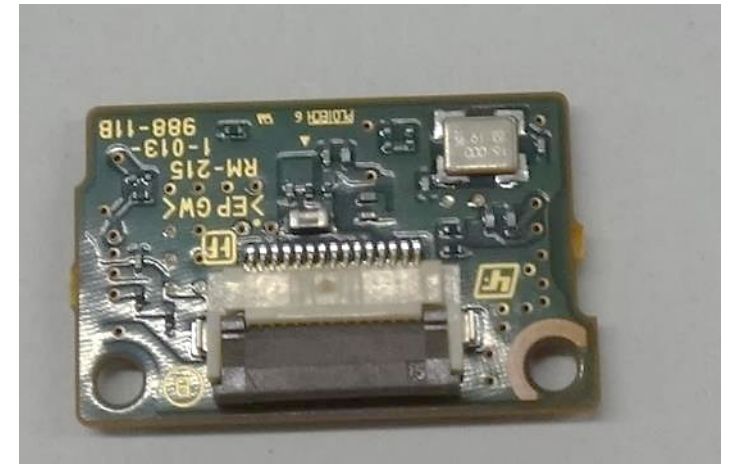


Fig.30 Side B of board RM-215



Fig.31 chassis with the electromagnetic absorber sheet (only for destination H ) and chassis without the electromagnetic absorber sheet