

A

B

C

D

E

F

A

B

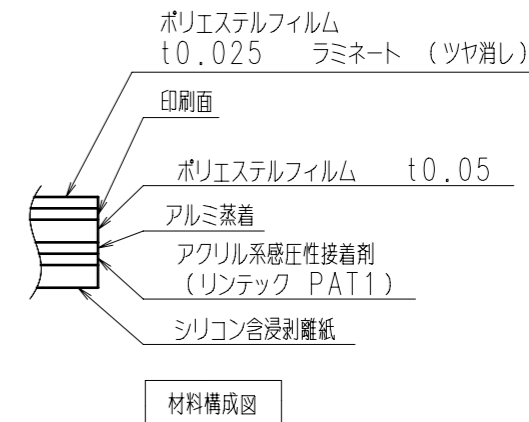
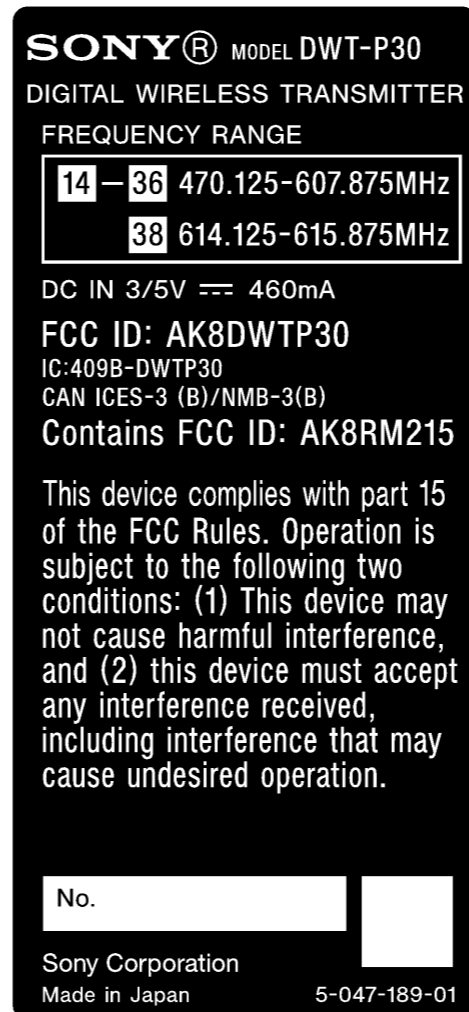
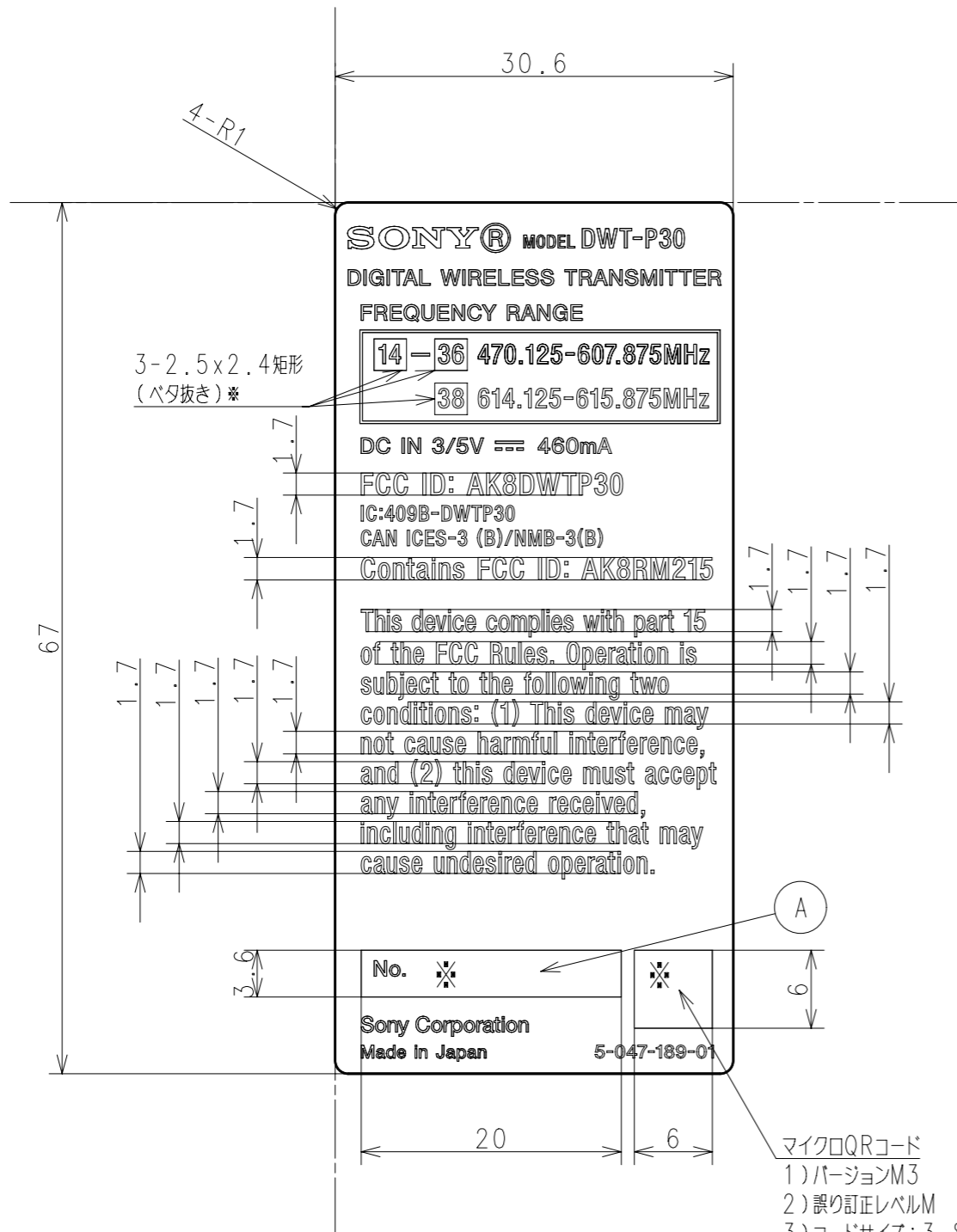
C

D

E

F

The way to use:
 Paste the label which obtains
 UL-approved material code no. SWPL-SM,
 cUL-approved material code no. SWPL-SM-C
 to designated position for the aluminum
 painted surface of DWT-P30



版下確認用
 For block copy check

Purchase recycled resins and wire rods only from the business partners that Sony approves as Green Partners.
 再生樹脂・被覆電線はグリーンパートナー認定取引先から調達すること。

- マイクロQRコード
 1)バージョンM3
 2)誤り訂正レベルM
 3)コードサイズ: 3.85mm×3.85mm
 (規格のマージンを残した範囲で、印刷品質に合わせた
 サイズ微調整は可)
 4)記載内容: 部品番号情報(全9桁の数字)

- 注1)印刷色は、地:「黒艶消」、文字:「銀」処理のこと。ただし、*指示部は、地:「銀」、文字:「黒艶消」とする。
 2)図中A部に字高2mmでシリアルNoを記載。(発注時に別途連絡)
 3)ラベル品質特性:STM-1078の第7.1項に定める各特性を満足すること。
 4)使用注意事項:耐薬品特性の試験は製品に貼り付けた状態で行われるので貼り付け条件には十分留意すること。
 (STM-1078 ソニー部品設計基準 - ラベル・銘版)第7.1.4項)
 5)版下は校正承認を要し、納入形態は別途打合わせのこと。
 6)UL認可品材料を使用のこと。三光産業(株)製 UL認可品コードNo. SWPL-SM. cUL認可品コードNo. SWPL-SM-C。
 UL認可品を表す欄表示は不要。

This label will not be peel off for the duration of the product lifetime.

△x							GENERAL TOLERANCE		STS-3	DATE OF ISSUE
							L \leq 4	4 \pm 0.2	2022.09.02	
△x							4<L \leq 16	16 \pm 0.3	DOCUMENT TYPE	PART
							16<L \leq 63	63 \pm 0.4		
△x		ECH59032	2022.09.02	P/N RELEASE			63<L \leq 250	250 \pm 0.5	TOLERANCING	DRAWING
							250<L \leq 400	400 \pm 0.7		
							400<L \leq 1000	1000 \pm 1.5		
							1000<L \leq 2000	2000 \pm 3		
							2000<L \leq 4000	4	JIS B 0024(ISO 8015)	
HISTORY	SUFFIX /REV. NO. -REPL.	RELEASE NO.	DATE	REVISION	SIGN.		MATERIAL (COLOR)	FINISH (COLOR)		
X							PET+AL+PSA (銀)	凸版印刷後 PETラミネート処理 ツヤ消し(黒)		
LEGAL OWNER										
Sony Global Manufacturing & Operations Corp.										
RESPONSIBLE DEPARTMENT					ORIGINAL MODEL	DESCRIPTION(E)				
Mechanical Design Dept.					DWT-P30(UC)	LABEL(P30UC), MODEL NUMBER				
PLANNED BY	CHECKED BY	APPROVED BY	SCALE	TENTATIVE MODEL	DESCRIPTION(J)					
2022.09.02	Design Section 1	SCMO MechDESIGN	2:1	MAX30190	仕様*1(P30UC)					
DRAWN BY	2022/09/05	2022/09/05	PRJ. METHOD	SIZE	UNIT	PART NO.	SUFFIX	REV. NO.	SHEET/PAGES	
2022.09.02	Masao Hirose	MASAKI SUENAGA	①E①	A3	mm	5047189	01	A	1/1	
THIS DOCUMENT IS THE PROPRIETARY PROPERTY OF SONY. ITS USE IS AUTHORIZED ONLY FOR RESPONDING TO A REQUEST FOR QUOTATION, OR FOR THE PERFORMANCE OF WORK FOR SONY. ALL QUESTIONS MUST BE REFERRED TO THE LOCAL PURCHASING DEPARTMENT OF SONY. THIS PART SHOULD NOT CONTAIN ANY SUBSTANCES WHICH ARE SPECIFIED IN SS-00259-01. THE REPRODUCTION, DISTRIBUTION AND UTILIZATION OF THIS DOCUMENT AS WELL AS THE COMMUNICATION OF ITS CONTENTS TO OTHERS WITHOUT EXPRESS AUTHORIZATION IS PROHIBITED. OFFENDERS WILL BE HELD LIABLE FOR THE PAYMENT OF DAMAGES. ALL RIGHTS RESERVED IN THE EVENT OF THE GRANT OF A PATENT, UTILITY MODEL OR DESIGN. COPYRIGHT RESERVED.										