

Inner structure document: Model DWT-B01N



Fig.1: Removed the rear panel

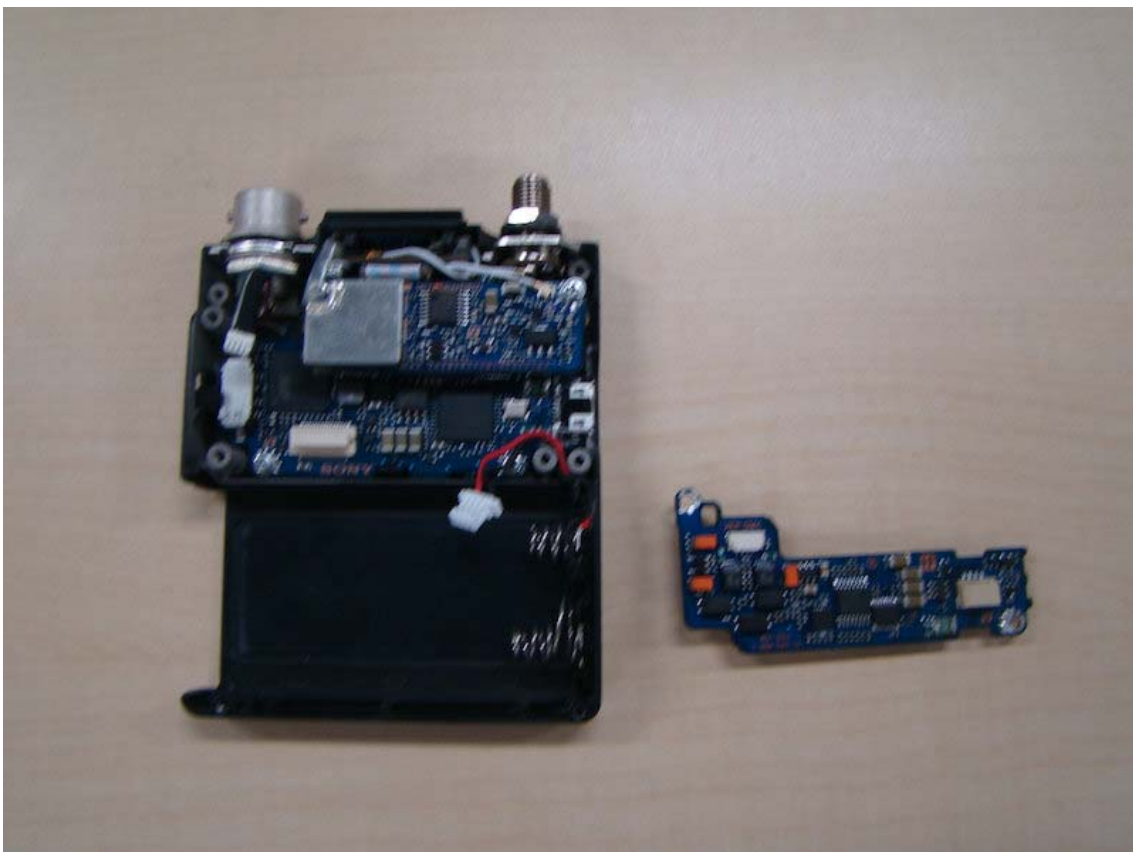


Fig.2: Removed the board AU-354

Inner structure document: Model DWT-B01N

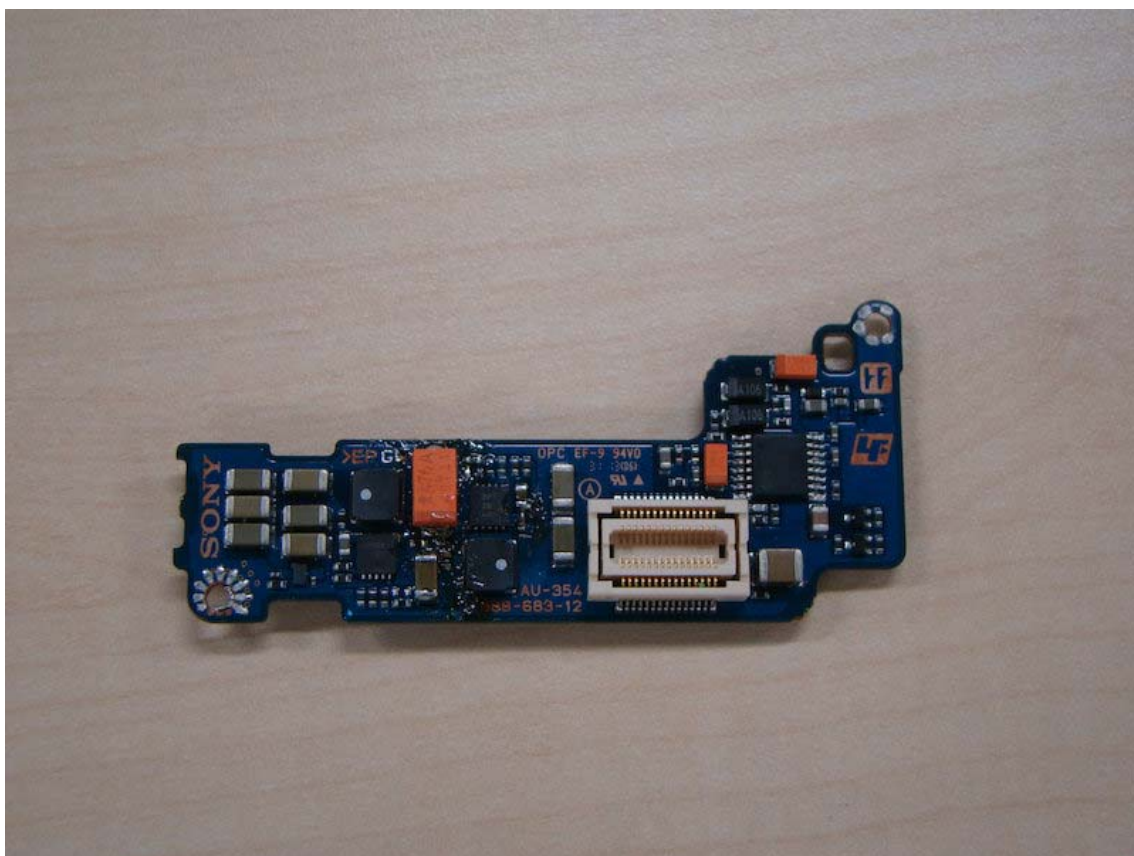


Fig.3: Side A of board AU-354

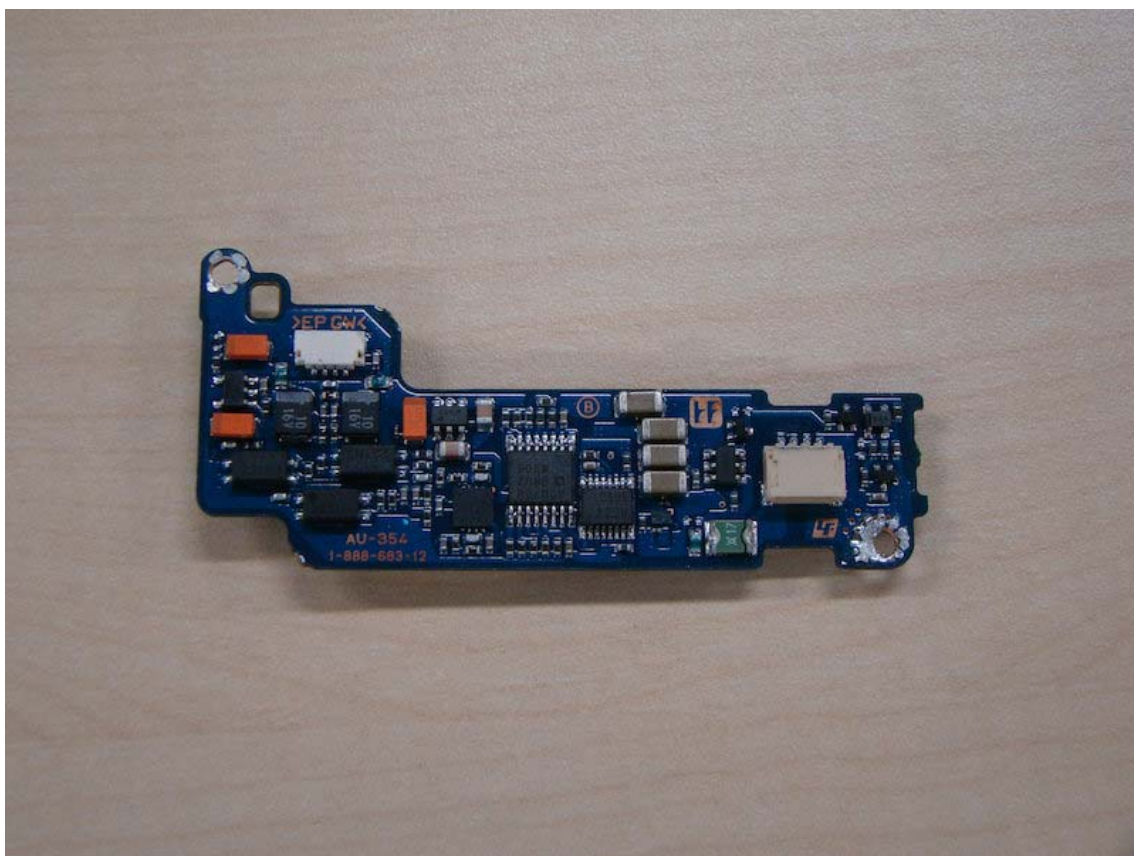


Fig.4: Side B of board AU-354

Inner structure document: Model DWT-B01N



Fig.5: Removed the board TX-147



Fig.6: Side A of board TX-147

Inner structure document: Model DWT-B01N



Fig.7: Side B of board TX-147

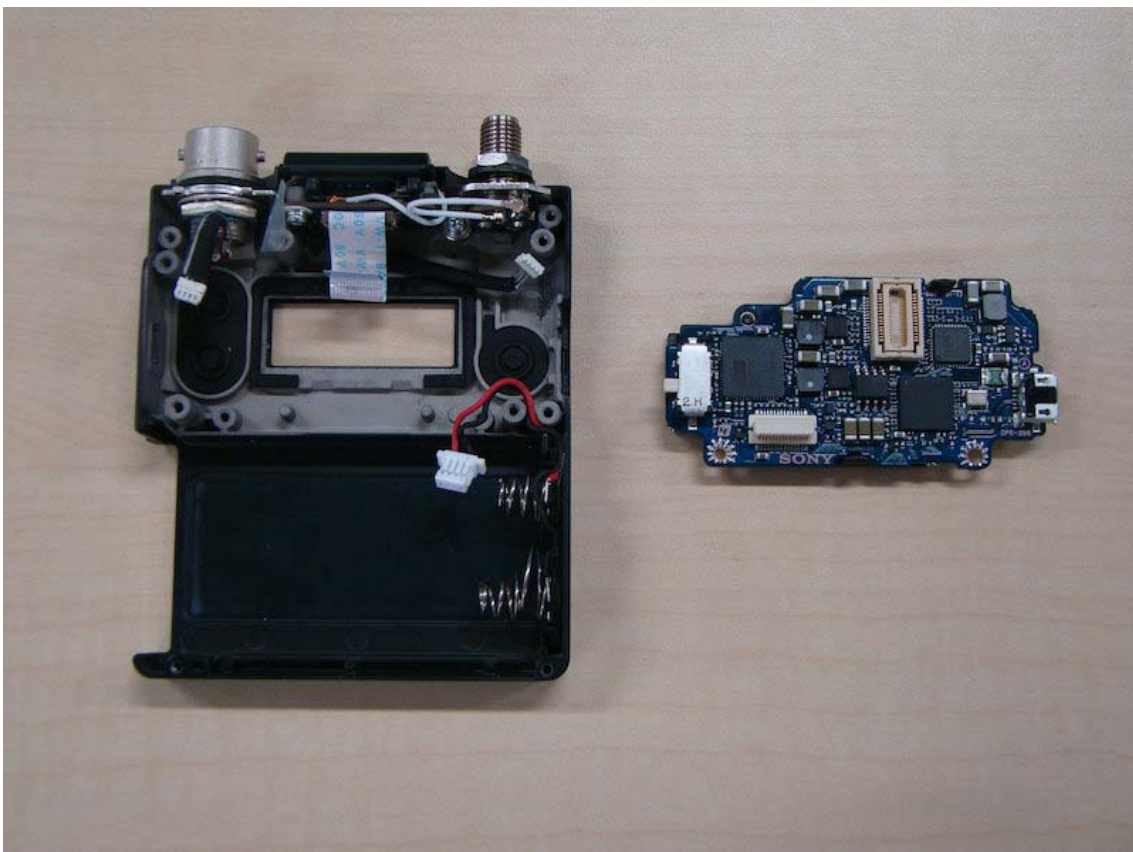


Fig.8: Removed the board DPR-356

Inner structure document: Model DWT-B01N

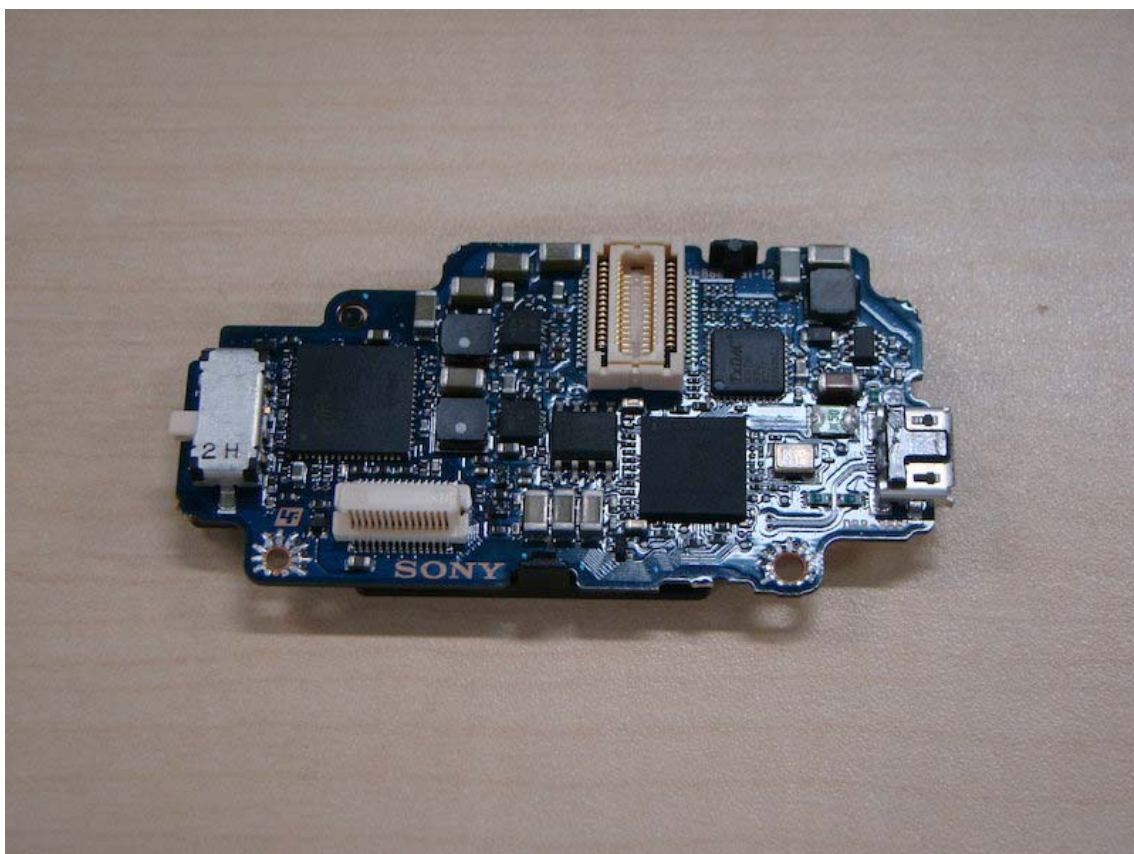


Fig.9: Side A of board DPR-356



Fig.10: Side B of board DPR-356

Inner structure document: Model DWT-B01N

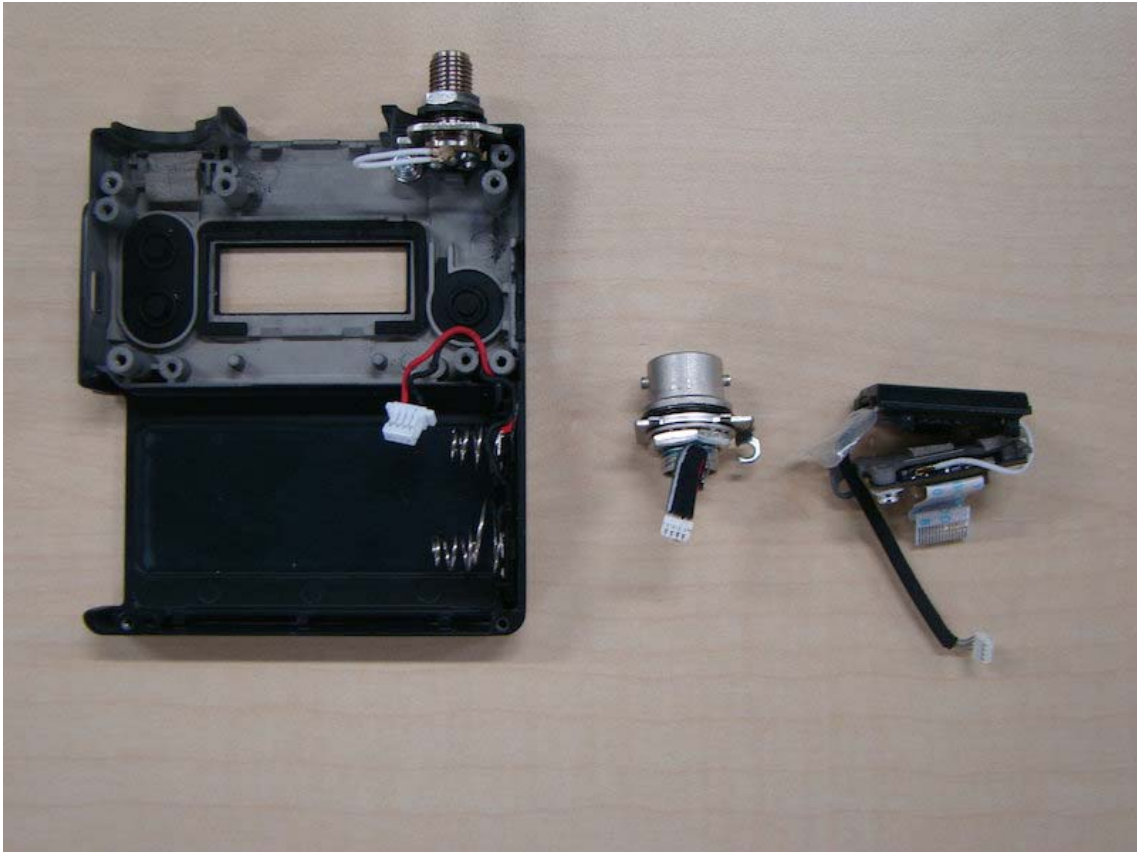


Fig.11: Removed the MIC connector and RM assembly



Fig.12: MIC connector

Inner structure document: Model DWT-B01N



Fig.13: RM assembly

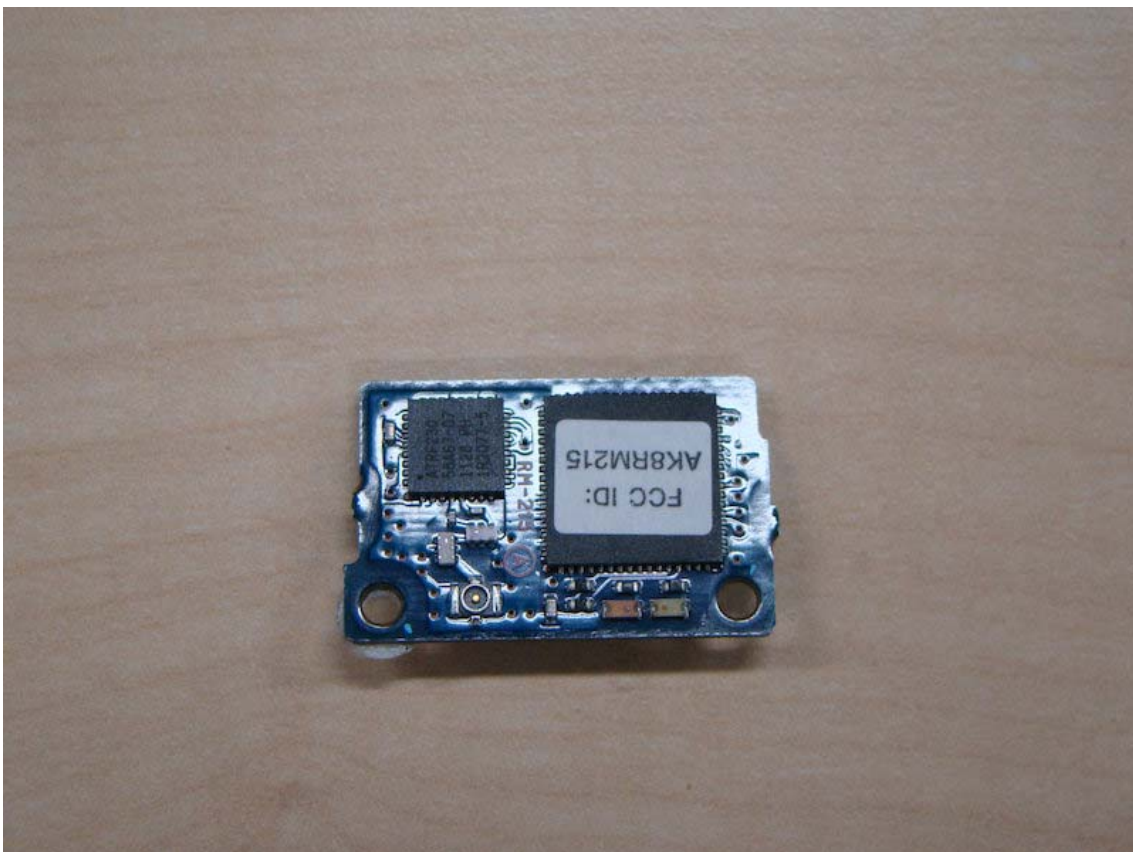


Fig.14: Side A of board RM-215

Inner structure document: Model DWT-B01N

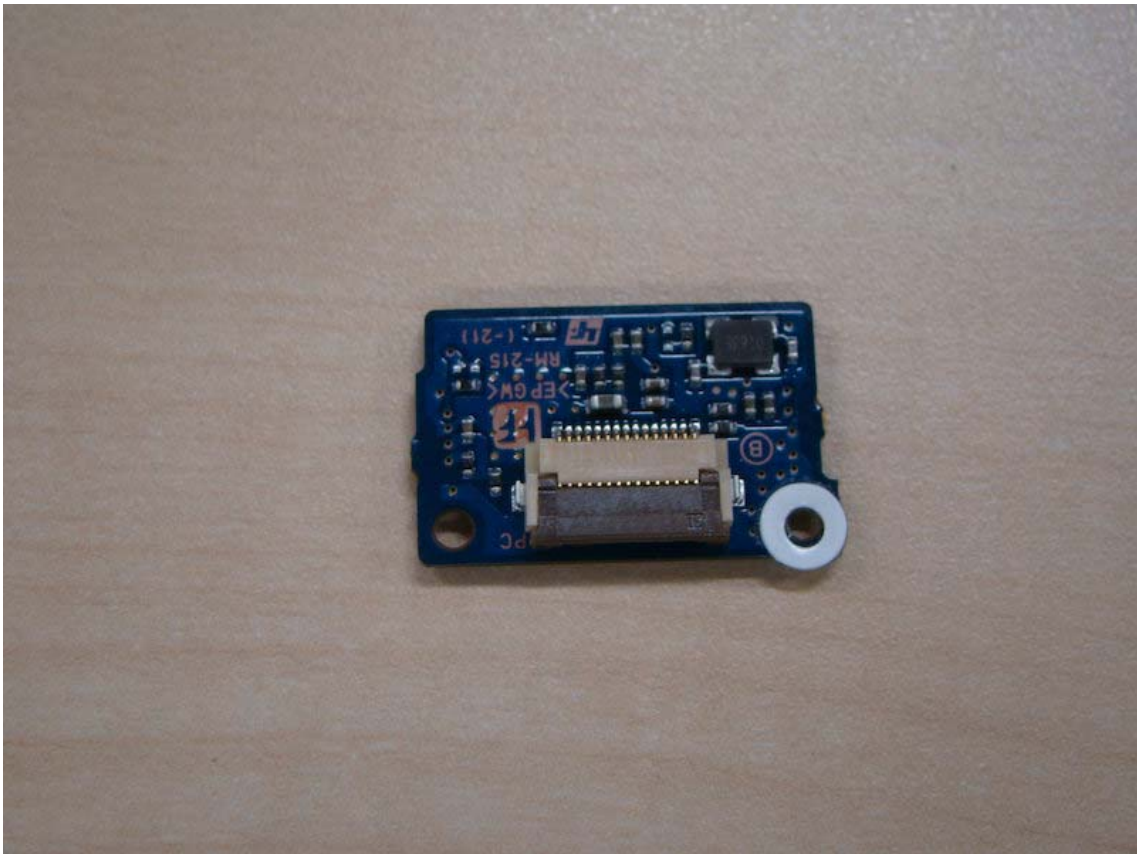


Fig.15: Side B of board RM-215

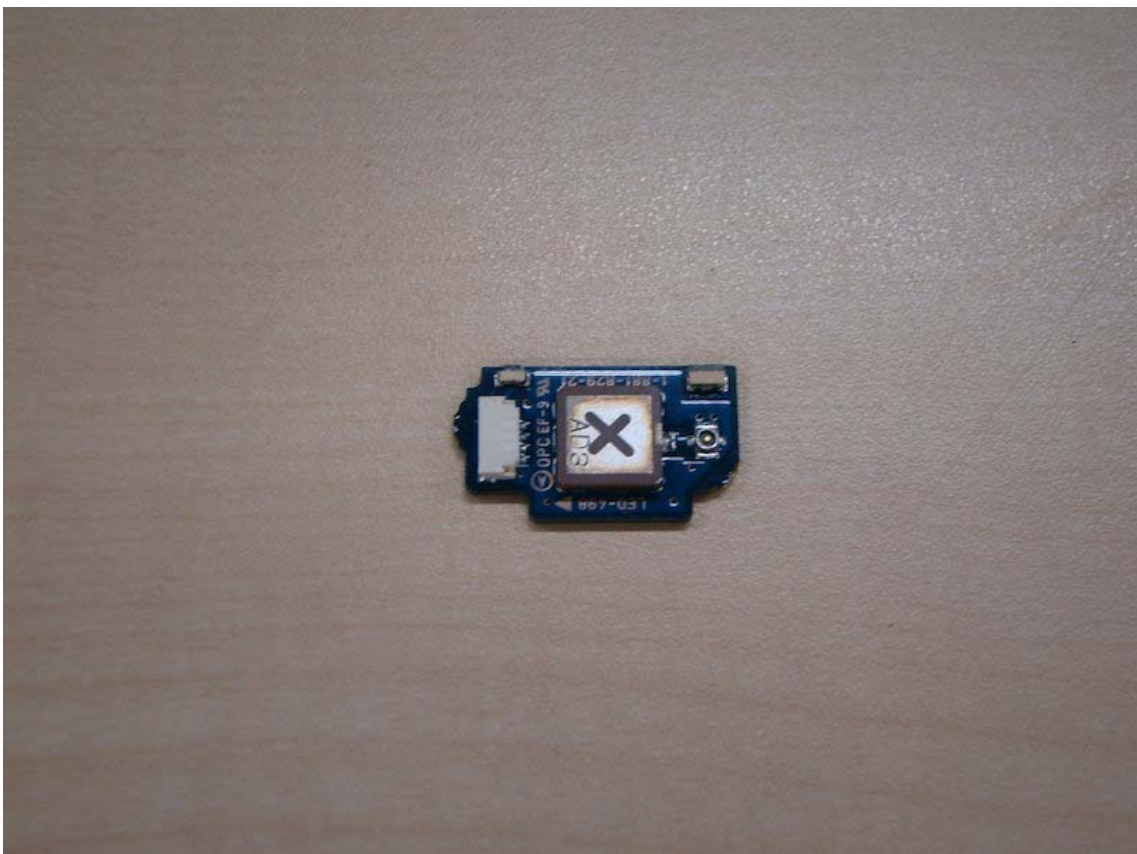


Fig.16: Side A of board LED-498

Inner structure document: Model DWT-B01N



Fig.17: Side B of board LED-498

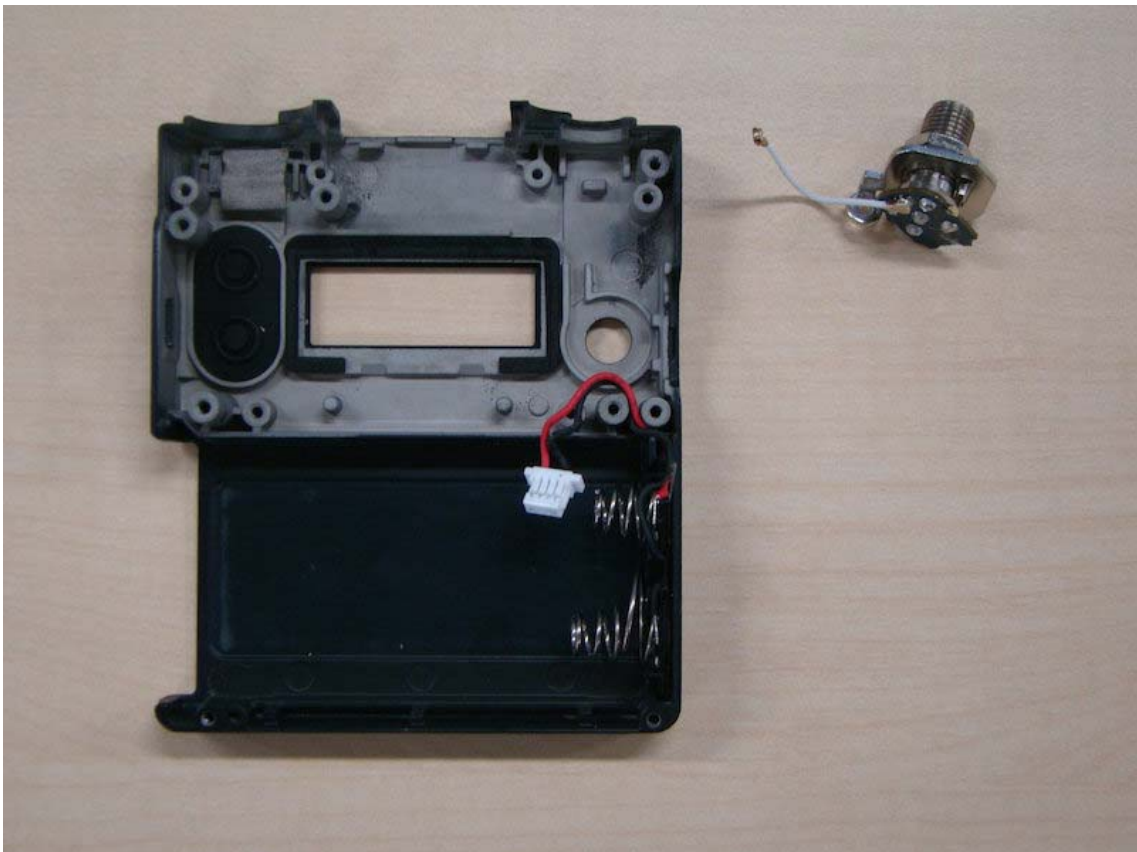


Fig.18: Removed the antenna connector