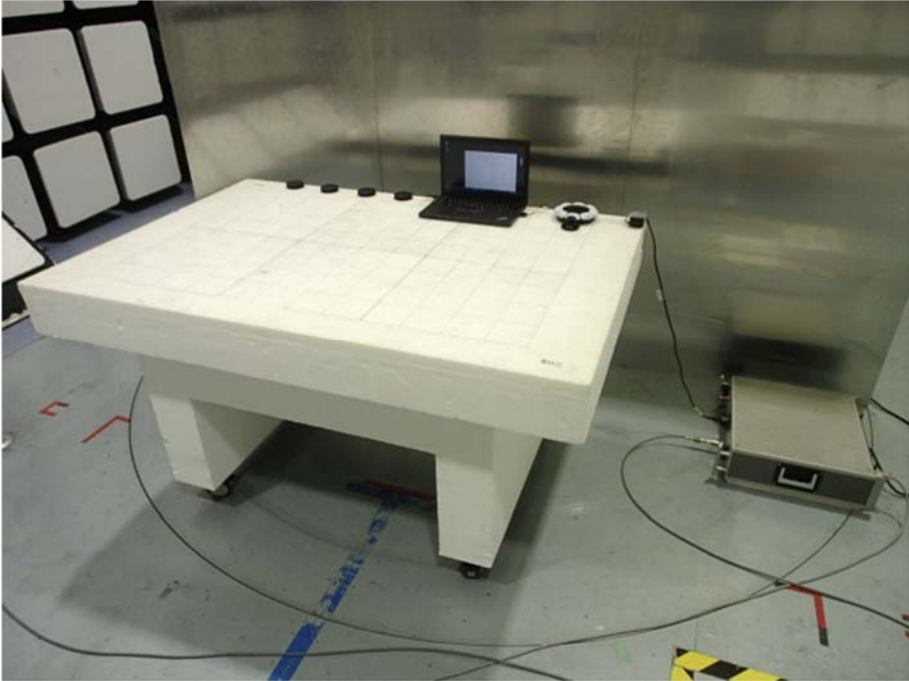
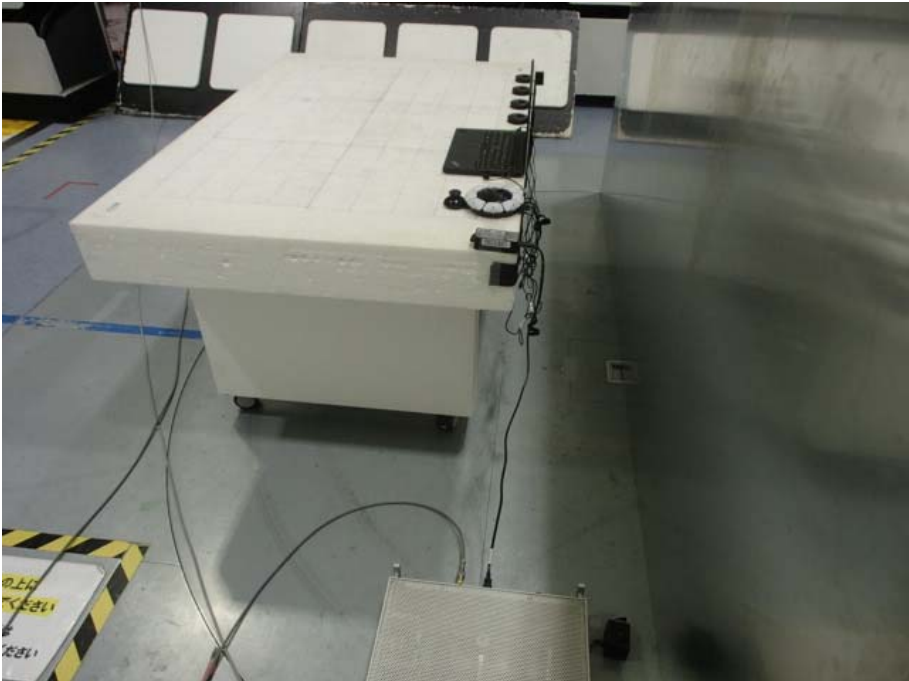


**APPENDIX 3: Photographs of test setup**

**Conducted Emission**



**Photo 1**



**Photo 2**

## Radiated Spurious Emission

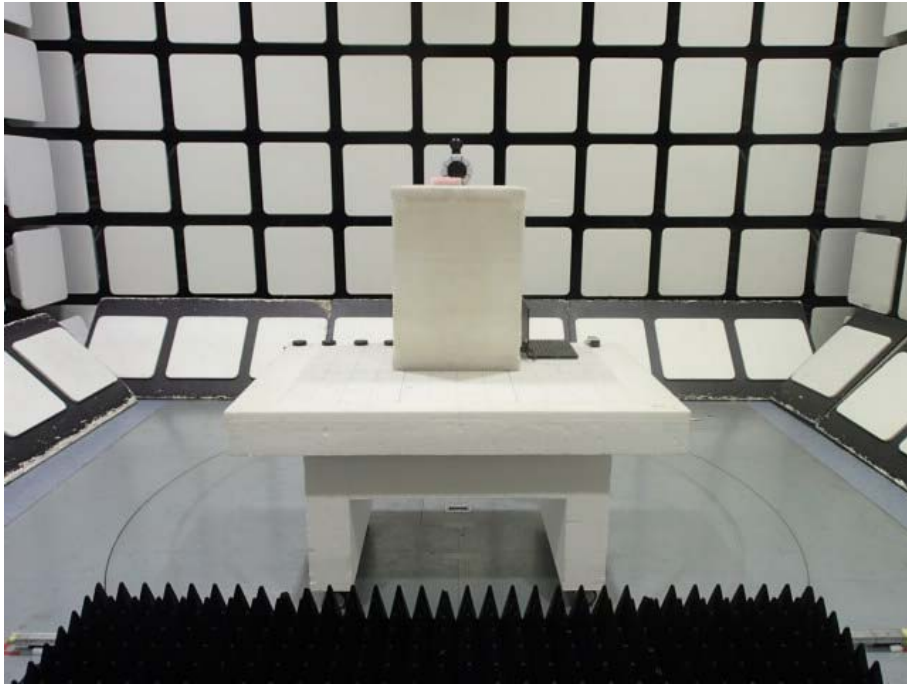


Photo 1



Photo 2

**Worst Case Position**

Test Range	Horizontal	Vertical
Below 1 GHz	Y-axis	Y-axis
Above 1 GHz	Y*-axis	Y*-axis

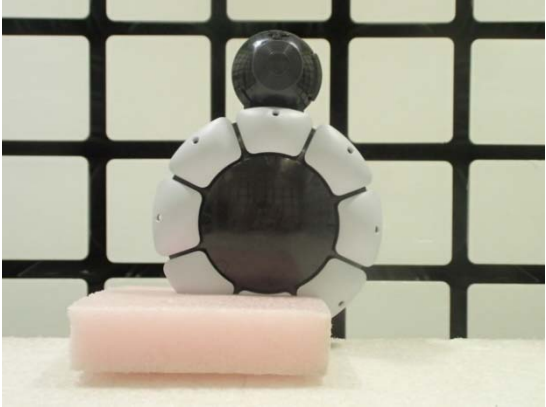
**X-axis**



**X\*-axis**



**Y-axis**



**Y\*-axis**



**Z-axis**



**Z\*-axis**



**Antenna Terminal Conducted Tests**



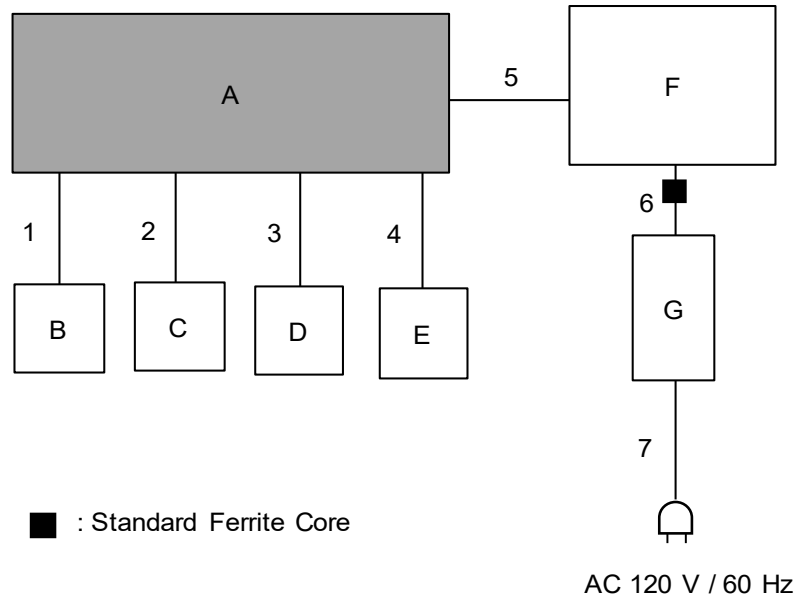
**Photo 1**



**Photo 2**



### Test Configuration and peripherals



\* Cabling and setup(s) were taken into consideration and test data was taken under worse case conditions.

#### **Description of EUT and Support Equipment**

No.	Item	Model number	Serial Number	Manufacturer	Remarks
A	Wireless Controller	CFI-ZAC1	No.0122 for CE, RE* No.0104 for AT*	Sony Interactive Entertainment Inc.	EUT
B	External Button	-	BTN01	Logitech	-
C	External Button	-	BTN02	Logitech	-
D	External Button	-	BTN03	Logitech	-
E	External Button	-	BTN04	Logitech	-
F	Laptop PC	ThinkPad X230	R9-X86LK	Lenovo	-
G	AC Adapter	-	11S92P1156Z1ZDXN88 CUJM	Lenovo	-

#### **List of Cables Used**

No.	Name	Length (m)	Shield		Remarks
			Cable	Connector	
1	Signal Cable	2.0	Unshielded	Unshielded	-
2	Signal Cable	2.0	Unshielded	Unshielded	-
3	Signal Cable	2.0	Unshielded	Unshielded	-
4	Signal Cable	2.0	Unshielded	Unshielded	-
5	USB Cable	1.5	Shielded	Shielded	-
6	DC Cable	1.8	Unshielded	Unshielded	-
7	AC Cable	0.8	Unshielded	Unshielded	-

\*CE: Conducted Emission test  
RE: Radiated Emission test  
AT: Antenna Terminal conducted test

**End of Report**