

Antenna specification

Antenna Model Name:5G-DU-SE-14-16

Antenna Type: Sector

Manufacturer : Allendale Group Ltd.

Input Impedance: 50ohm

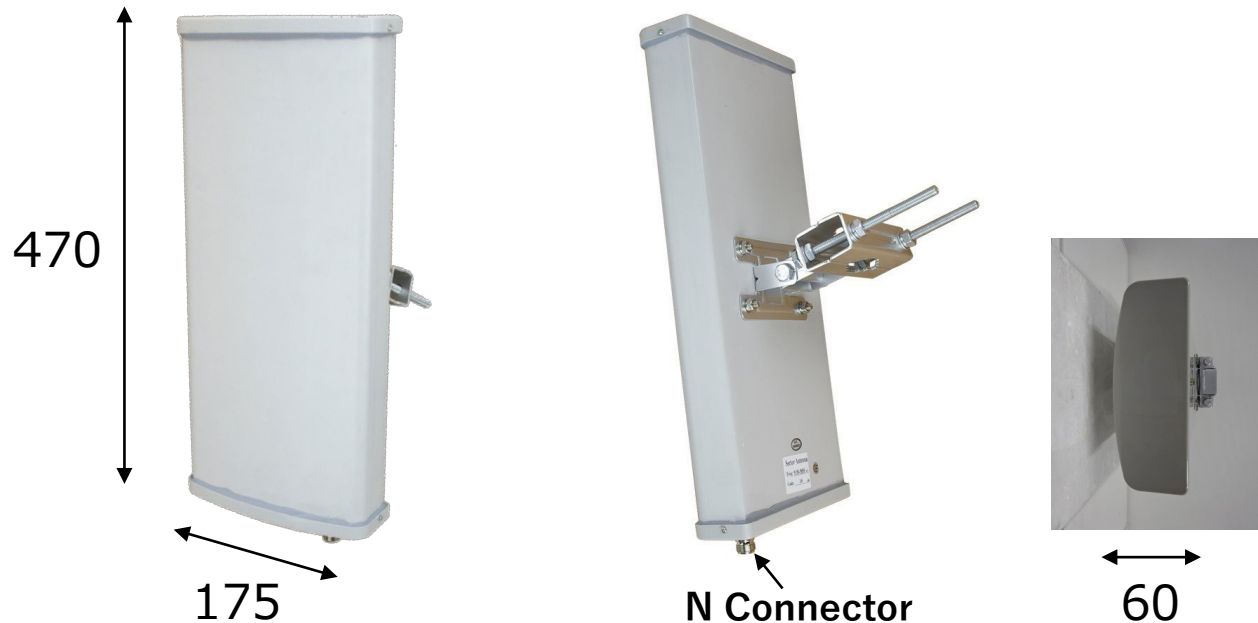
URL: <https://www.wifi-antennas.co.uk/14-16dbi-2-4-5ghz-dual-band-60-degree-sector-antenna-bands-a-b-c-n-type>

Cable: Antenna is connected to DUT by a dedicated cable.

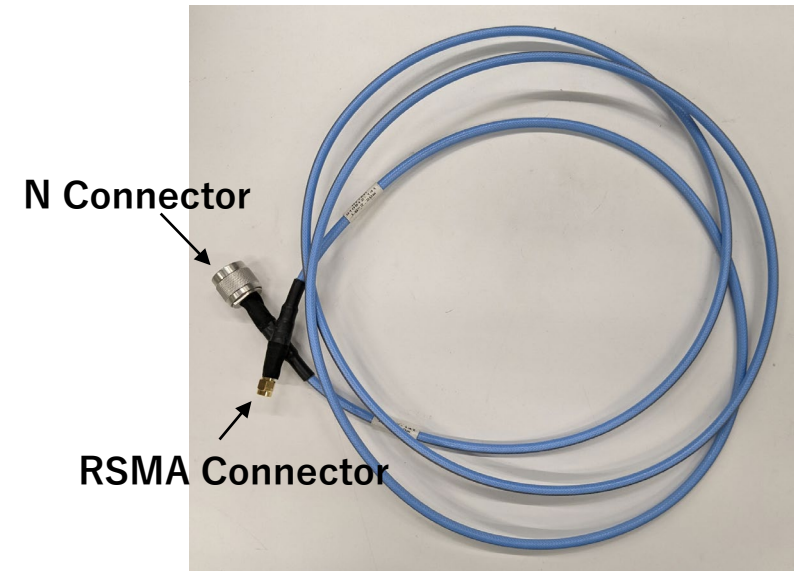
All antenna characteristics were measured with the dedicated cable attached.

■ Dimention

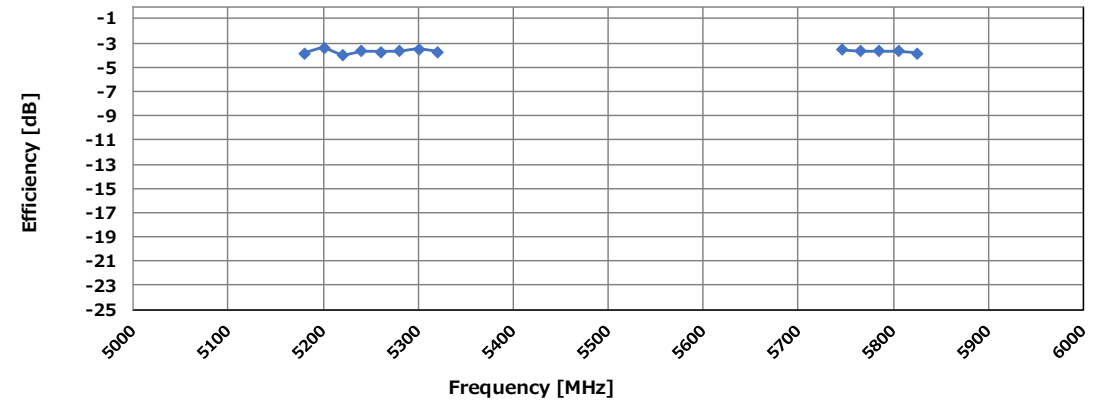
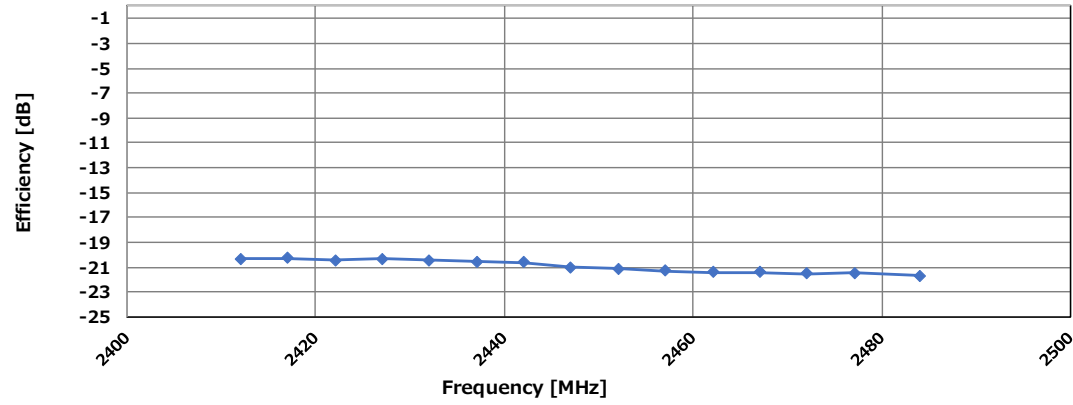
470x175x60mm



Dedicated Cable included with antenna
Length 2.2m

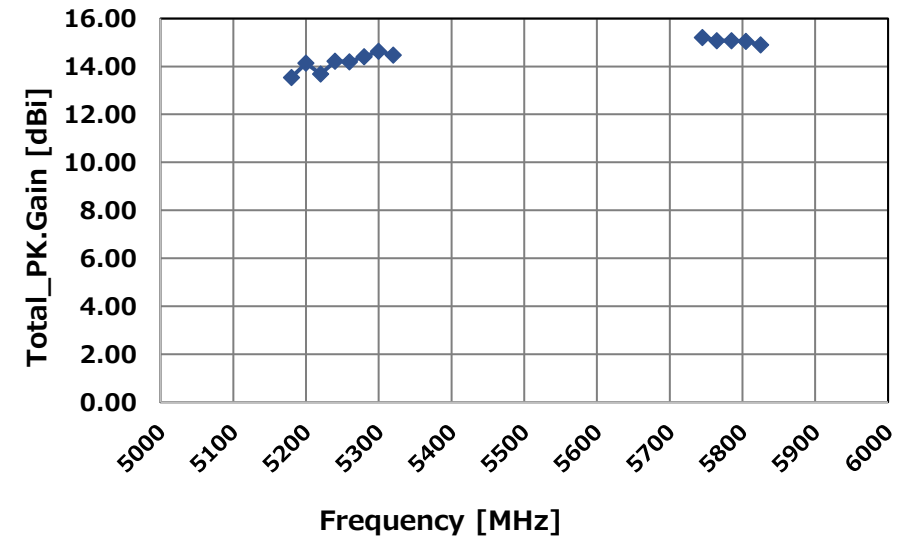
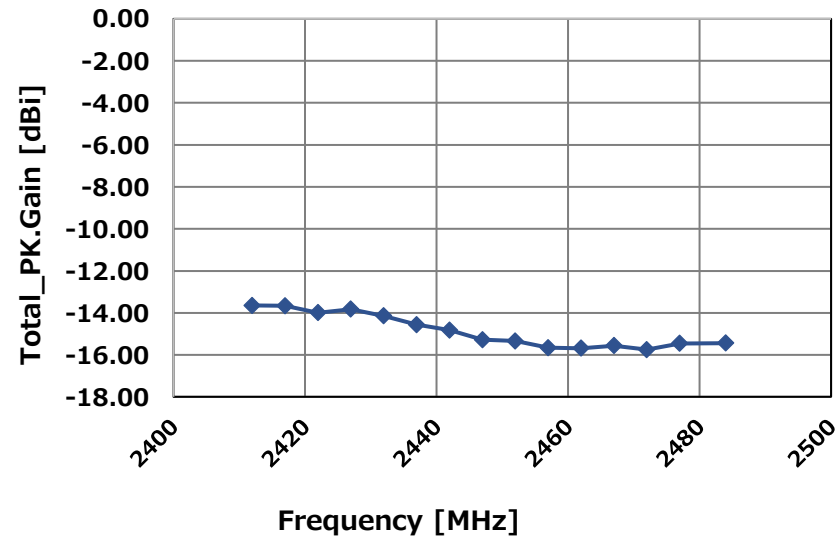


■ Efficiency



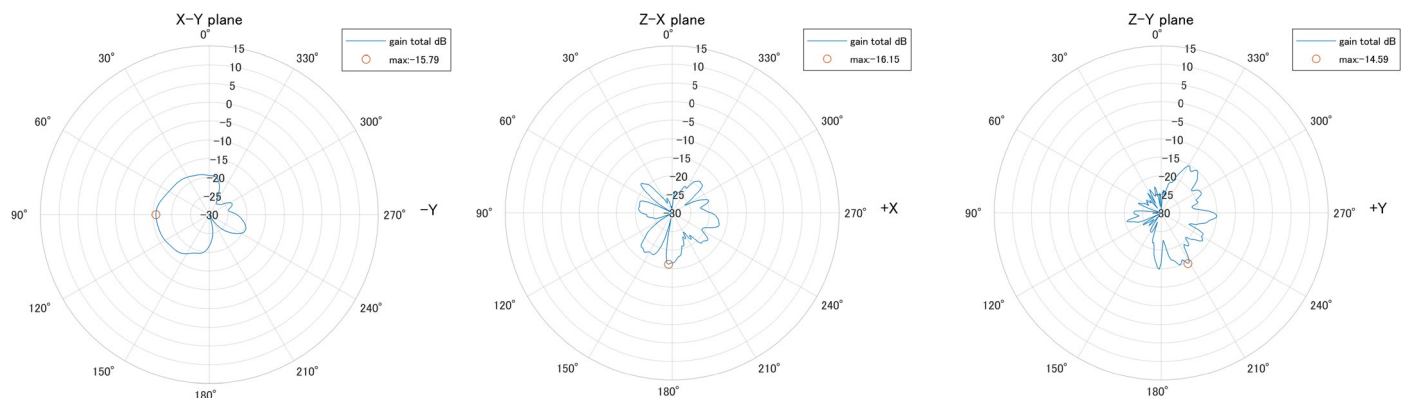
■ Peak Gain

Frequency [MHz]	Peak Gain[dBi]
2400~2500	-13.70
5150~5250	14.70
5725~5850	15.30

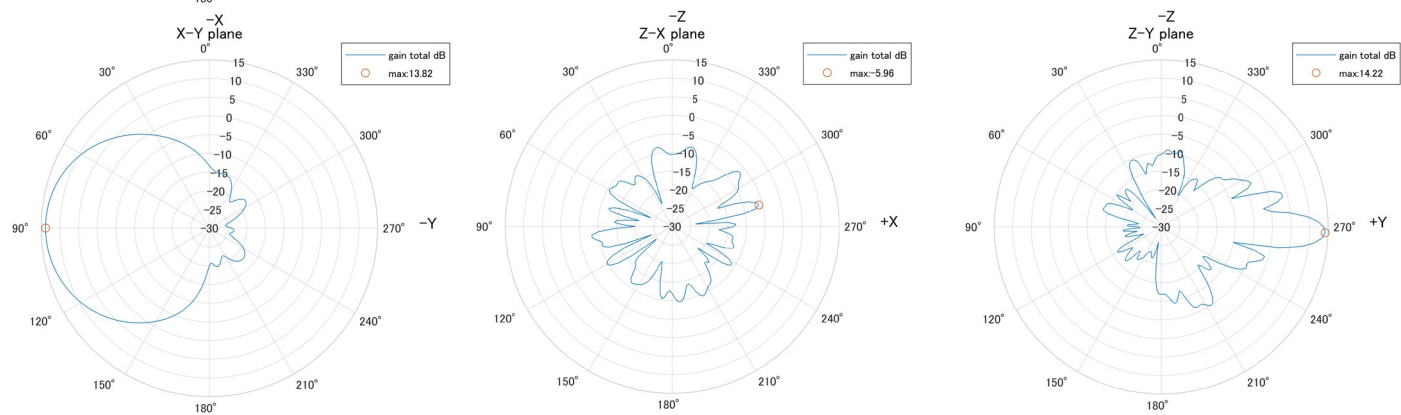


Radiation Pattern

2437MHz



5240MHz



5745MHz

