

2	250 913-3667-510	CAPACITOR, 0.0027	23	C113,146
AR	249 838-0002-010	ADHESIVE, UNISSET	29	
2	248 628-7676-016	INSULATOR	20	
1	247 914-3503-730	CAPACITOR, 560 pF		C995
4	246 914-3503-710	CAPACITOR, 470 pF		C501,741,750,941
2	245 914-3503-590	CAPACITOR, 120 pF		C957,972
1	244 914-3503-410	CAPACITOR, 39 pF		C994
1	243 914-3503-400	CAPACITOR, 36 pF		C604
1	242 914-3503-360	CAPACITOR, 24 pF		C603
3	241 914-3503-330	CAPACITOR, 18 pF		C605,708,749
1	240 914-3503-210	CAPACITOR, 5.6 pF		C601
2	239 914-3503-160	CAPACITOR, 3.6 pF		C602,993
2	238 914-3500-370	CAPACITOR, 100 pF		C904,911
2	237 914-3500-350	CAPACITOR, 82 pF		C907,910
1	236 914-3500-310	CAPACITOR, 56 pF		C192
1	235 914-3500-270	CAPACITOR, 39 pF		C193
2	234 914-3500-240	CAPACITOR, 30 pF		C909,940
1	233 914-3500-230	CAPACITOR, 27 pF		C937
1	232 914-3500-200	CAPACITOR, 20 pF		C900
2	231 913-3670-090	CAPACITOR, 560 pF		C903,928
1	230 913-3667-470	CAPACITOR, 220 pF		C908
1	229 913-3667-170	CAPACITOR, 150 pF		C905
2	228 913-3667-150	CAPACITOR, 100 pF		C119,198
1	227 913-3667-080	CAPACITOR, 27 pF		C66
4	226 913-3667-030	CAPACITOR, 10 pF	28,31	C232,233,996,1002
31	225 913-0865-680	CAPACITOR, 1000 pF		C10,13,53,60,62,69, 78,137,139,147,148, 151,154,158,159,165, 166,175,178,179,182, 189,216,218-221,403, 404,854,858 C117,118,125,157,161 194,227,228,231,291, 503,504,817,819,821, 920,921,923,938,955 C945-948 C26 C38,40,42,57,65,72, 74,75,91,104,105,108 111,114,115,141, 143-145,153,167,172, 225,226,400,401, 721-724 C89 C234 C16-18,30,33,37,43, 45,49-52,70,98,104, 217,235,729, 1004-1007
20	224 913-0865-640	CAPACITOR, 470 pF		
4	223 913-0865-620	CAPACITOR, 0.1		
1	222 913-0865-560	CAPACITOR, 0.033		
30	221 913-0865-500	CAPACITOR, 0.01		
1	220 913-0865-440	CAPACITOR, 3300 pF		
1	219 913-0865-430	CAPACITOR, 2700 pF		
22	218 913-0865-380	CAPACITOR, 1000 pF	25	

1	253 914-3503-340	CAPACITOR, 20 pF	25	C1003
3	252 628-7676-013	INSULATOR	23,24	
2	251 628-7676-014	INSULATOR	22	

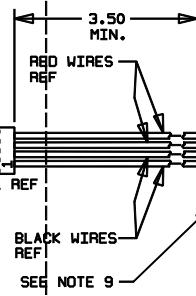
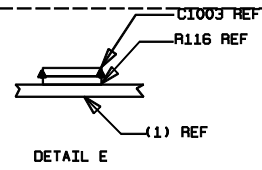
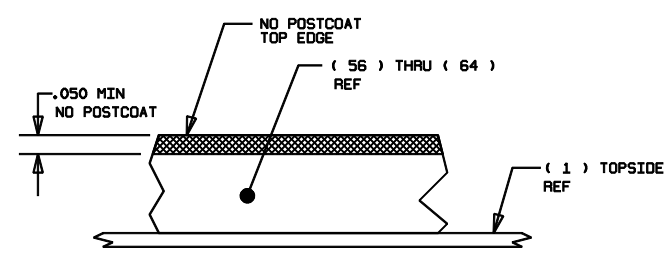
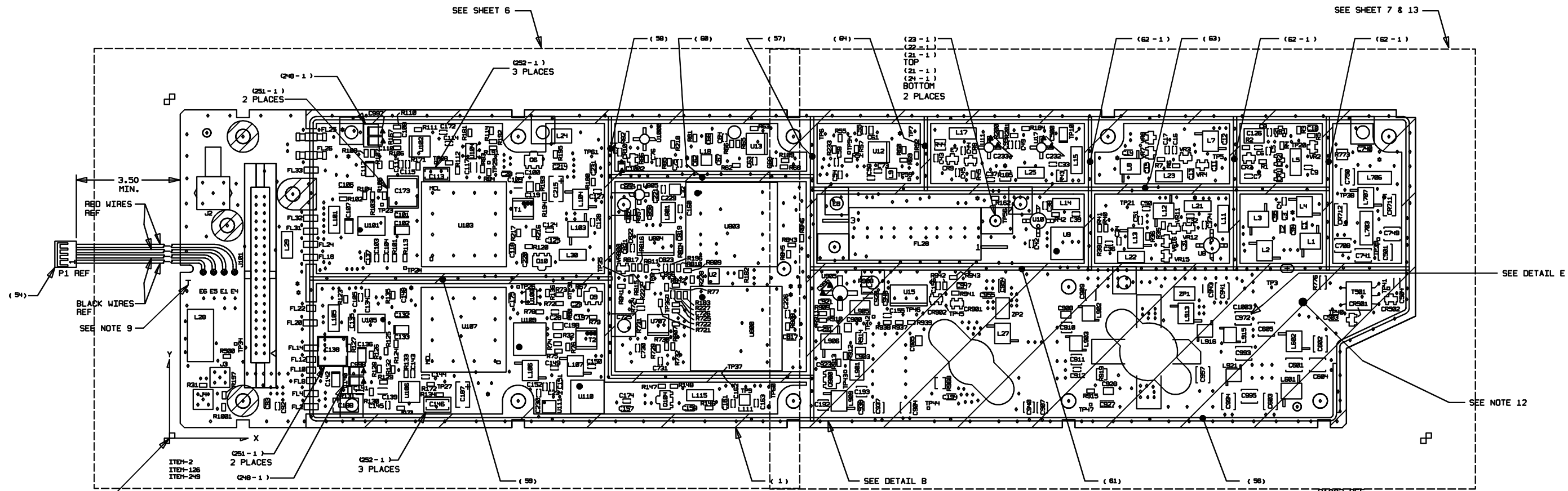
QTY	ITEM NO.	PART OR IDENT NO.	NOMENCLATURE OR DESCRIPTION	NOTES	REF DESIGNATORS
PARTS LIST (US CUSTOMARY MEASUREMENTS ONLY)					

QTY	ITEM NO.	PART OR IDENT NO.	NOMENCLATURE OR DESCRIPTION	NOTES	REF DESIGNATORS
PARTS LIST (US CUSTOMARY MEASUREMENTS ONLY)					

ROCKWELL COLLINS, INC
400 COLLINS ROAD NE, CEDAR RAPIDS IOWA, 52498

PREP. K. BARKER	SIZE D	CAGE CODE 4V792	DWG NO. 828-3186-002	REV LTR C
ROCKWELL PROPRIETARY INFORMATION.	CHK D. FOY	SCALE NONE	SHEET 3	

DIGITAL DATA ONLY, NO MASTER TRACING.



MASTER 0-0
ITEM-2
ITEM-126
ITEM-248

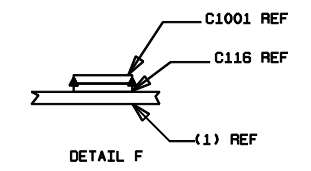
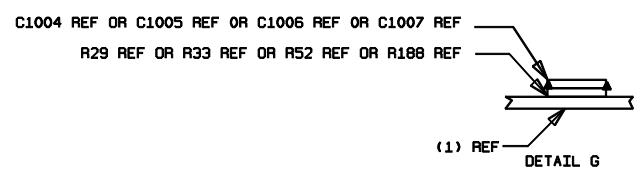
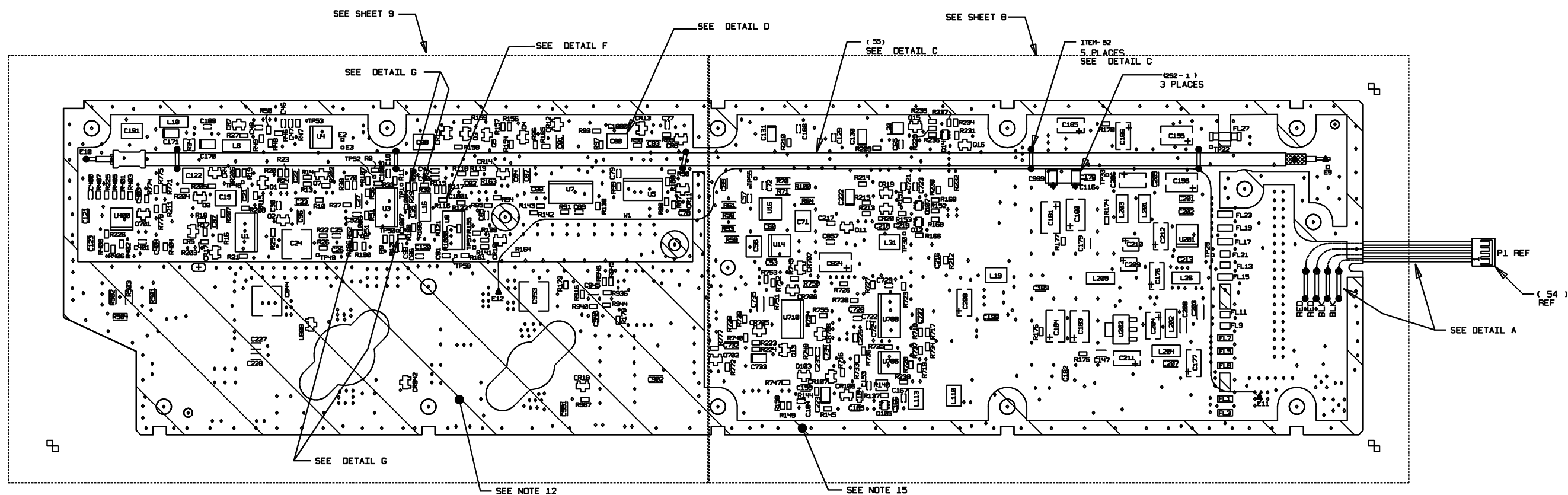
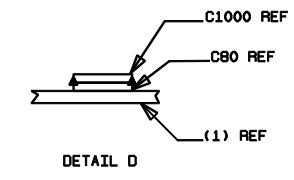
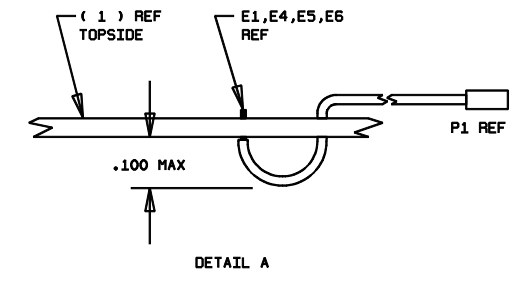
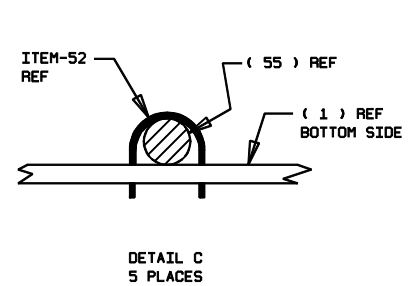
DETAIL B
SEE NOTE 16

ROCKWELL COLLINS, INC
400 COLLINS ROAD NE, CEDAR RAPIDS IOWA, 52498

PREP K. BARKER 02-JUL-2001	SIZE D	CAGE CODE 4V792	DWG NO. 828-3186-002	REV LTR C
CHK D. FOY	SCALE NONE	SHEET 4		

ROCKWELL PROPRIETARY INFORMATION.

DIGITAL DATA ONLY, NO MASTER TRACING.



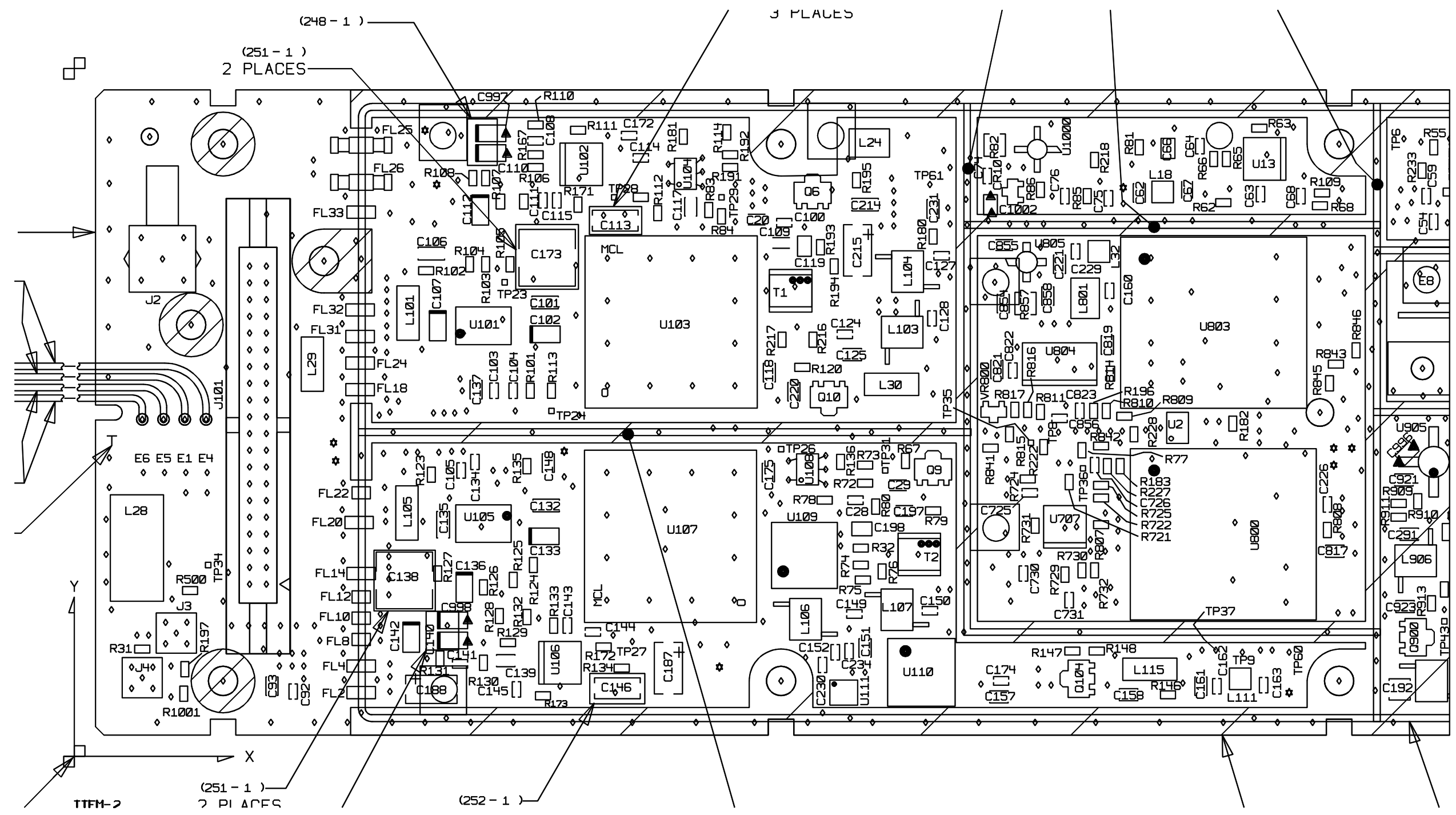
COMPONENTS BOTTOM

ROCKWELL PROPRIETARY INFORMATION.

PREP K. BARKER
02-JUL-2001
CHK D. FOY

ROCKWELL COLLINS, INC 400 COLLINS ROAD NE, CEDAR RAPIDS IOWA, 52498			
SIZE	CAGE CODE	DWG NO.	REV
D	4V792	828-3186-002	LTR C
SCALE	NONE	SHEET	5

DIGITAL DATA ONLY, NO MASTER TRACING.



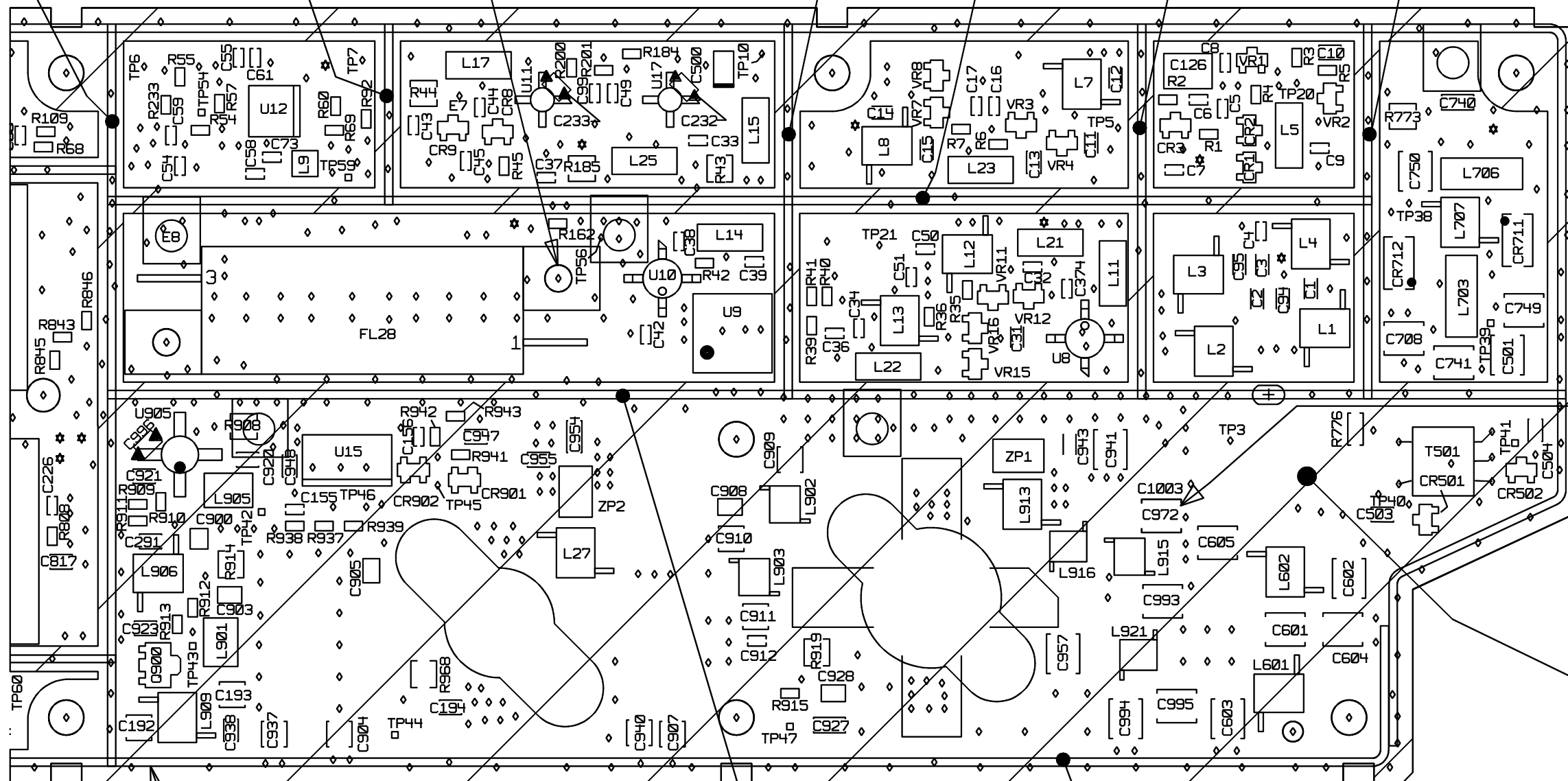
ASSEMBLY DETAIL G

ROCKWELL COLLINS, INC			
400 COLLINS ROAD NE, CEDAR RAPIDS IOWA, 52498			
PREP K. BARKER	SIZE D	CAGE CODE 4V792	DWG NO. 828-3186-002
CHK D. FOY	SCALE NONE	REV LTR C	SHEET 6

ROCKWELL PROPRIETARY INFORMATION.

DIGITAL DATA ONLY, NO MASTER TRACING.

(21 - 1)
 (24 - 1)
 BOTTOM
 2 PLACES



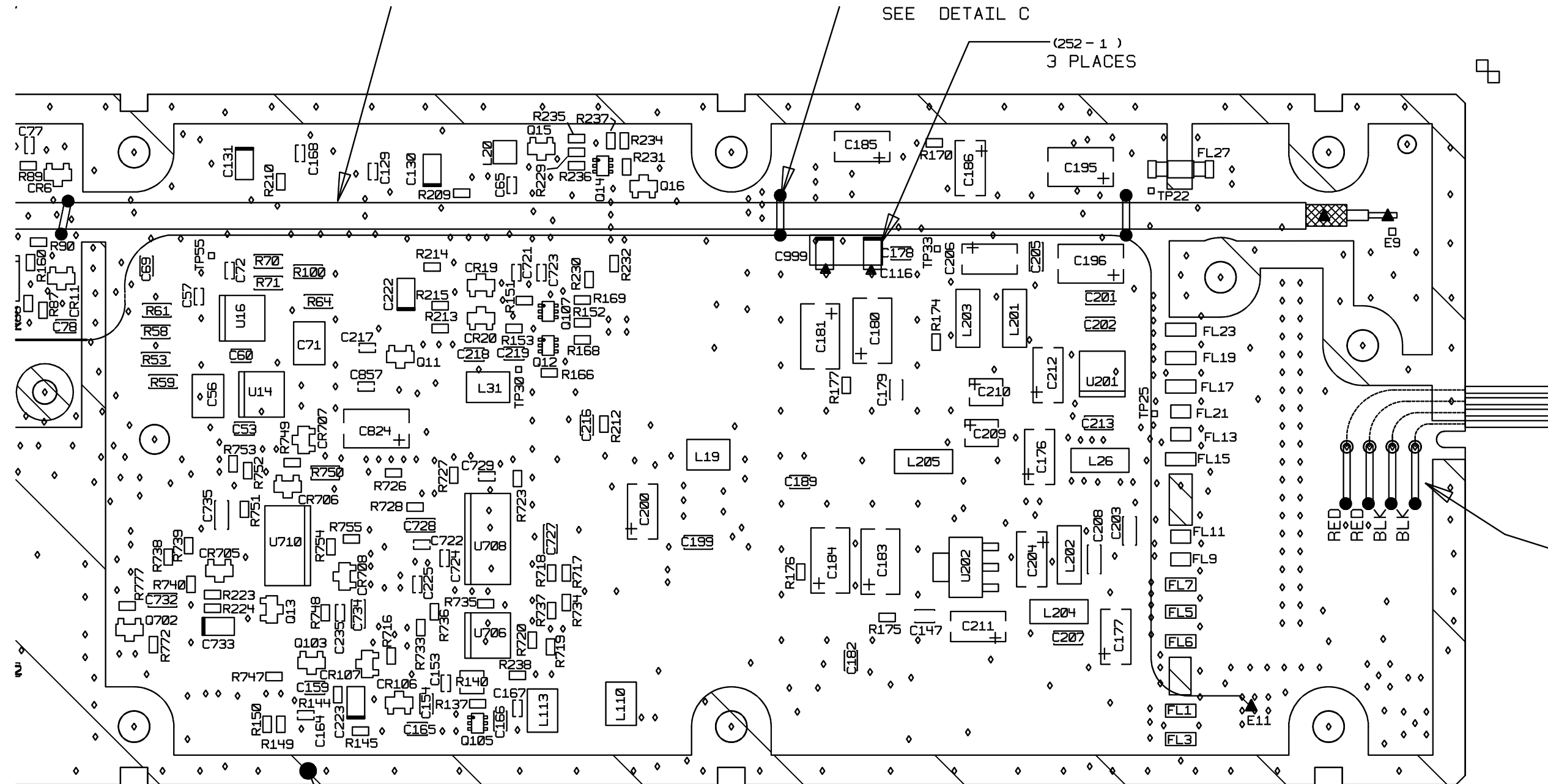
ASSEMBLY DETAIL H

ROCKWELL COLLINS, INC
 400 COLLINS ROAD NE, CEDAR RAPIDS IOWA, 52498

PREP K. BARKER 02-Jul-2001	SIZE D	CAGE CODE 4V792	DWG NO. 828-3186-002	REV LTR C
CHK D. FOY	SCALE NONE		SHEET 7	

ROCKWELL PROPRIETARY INFORMATION.

DIGITAL DATA ONLY, NO MASTER TRACING.



ASSEMBLY DETAIL I
COMPONENTS BOTTOM

ROCKWELL PROPRIETARY INFORMATION.

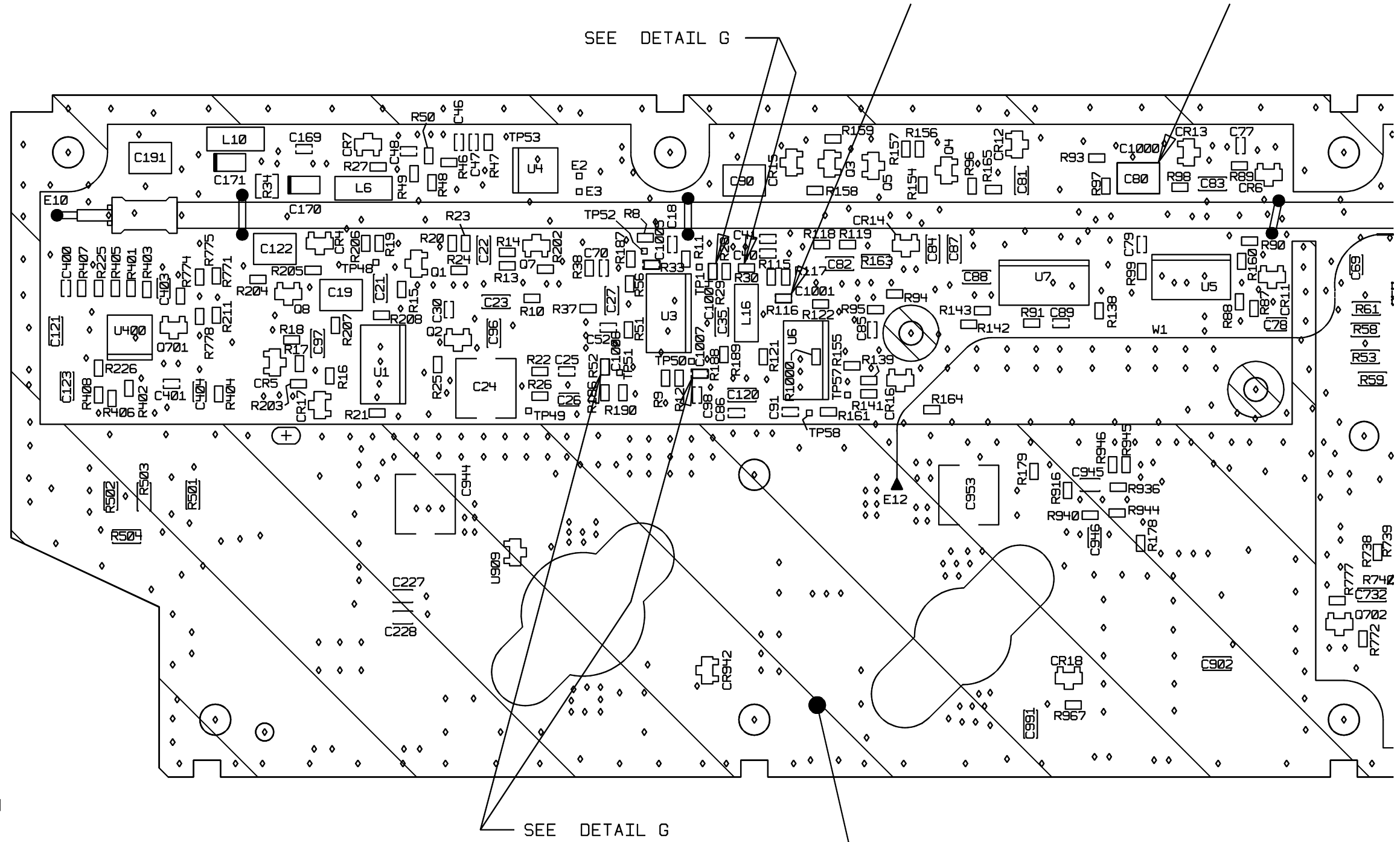
PREP K. BARKER
02-JUL-2001
CHK D. FOY

SIZE D
SCALE NONE

CAGE CODE 4V792
DWG NO. 828-3186-002
REV LTR C
SHEET 8

ROCKWELL COLLINS, INC
400 COLLINS ROAD NE, CEDAR RAPIDS IOWA, 52498

DIGITAL DATA ONLY, NO MASTER TRACING.



SEE DETAIL G

SEE DETAIL G

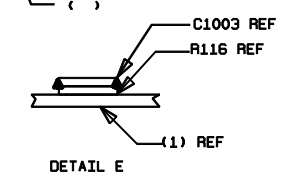
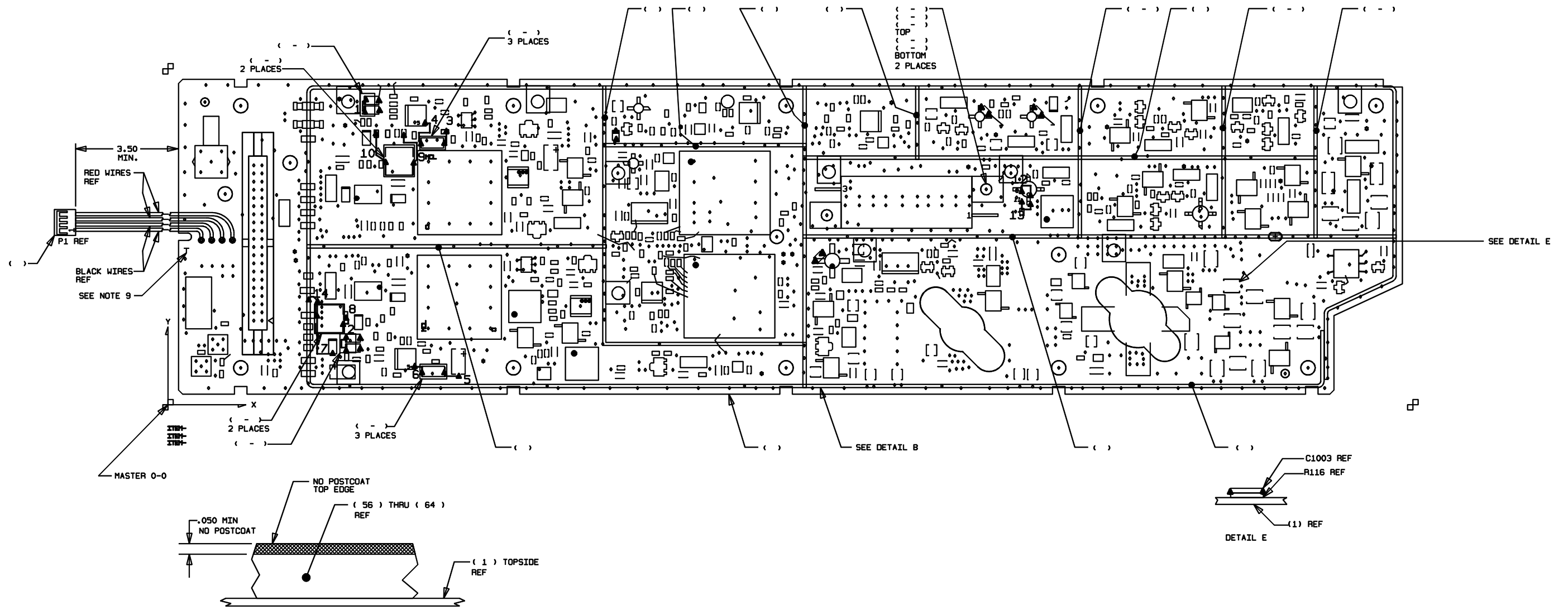
ASSEMBLY DETAIL J
COMPONENTS BOTTOM

ROCKWELL PROPRIETARY INFORMATION.

PREP K. BARKER
02-Jul-2001
CHK D. FOY

ROCKWELL COLLINS, INC 400 COLLINS ROAD NE, CEDAR RAPIDS IOWA, 52498			
SIZE	CAGE CODE	DWG NO.	REV
D	4V792	828-3186-002	LTR C
SCALE	NONE	SHEET	9

DIGITAL DATA ONLY, NO MASTER TRACING.



JUMPERS TOP

DETAIL B
SEE NOTE 16

ROCKWELL PROPRIETARY INFORMATION.

PREP K. BARKER
02-JUL-2001
CHK D. FOY

SIZE D
CAGE CODE 4V792
SCALE NONE

DWG NO. 828-3186-002
REV LTR C
SHEET 10

ROCKWELL COLLINS, INC
400 COLLINS ROAD NE, CEDAR RAPIDS IOWA, 52498

DIGITAL DATA ONLY, NO MASTER TRACING.