

- NOTES:
1. PARENTHETICAL ITEM IDENTIFICATION DENOTES (ITEM FIND NO.-QTY).
 2. REFERENCE DESIGNATORS ARE USED IN LIEU OF ITEM FIND NUMBERS.
 3. 580-6520-001 MAY BE UTILIZED ON THIS ASSEMBLY.
 4. TO BE TESTED AT A HIGHER LEVEL.
 5. SOLDER PER COMMERCIAL REQUIREMENTS (580-5178-000).
 6. MAXIMUM Z TOP DIMENSION SHALL NOT EXCEED DIMENSIONS SHOWN ON SHEET 10. MAXIMUM Z BOTTOM DIMENSION SHALL NOT EXCEED 0.185 EXCEPT CRS, CR14, Q18, Q19, Q20, R113,140,141,143 AND ITEM 124 WILL HAVE A MAX ZBOT .250.
 7. MARK REV LETTER FOLLOWING THE APPROPRIATE LETTERS REV PER 839-0497-001. ASSEMBLY IDENTIFIED BY APPLICATION OF MARKING REQUIREMENTS ON FAB PART.
 8. MAXIMUM LEAD PROTRUSION TO BE .100.
 9. "T" DESIGNATES BOARD TOP SURFACE.
 10. PER MANUFACTURING, PROJECT OR CONTRACT REQUIREMENTS, MARK THE MANUFACTURING CONTROL NUMBER FOLLOWING THE LETTERS MCN PER 839-0497-001.
 11. CAUTION: THIS ASSEMBLY CONTAINS ELECTROSTATIC SENSITIVE DEVICES, HANDLE PER 489-0004-001. IDENTIFY PER 580-6535-001. LOCATE ITEM 11 APPROXIMATELY AS SHOWN.
 12. POSTCOAT TOP AND BOTTOM SIDES PER 580-5458-001. CROSSHATCHED AREAS TO BE FREE OF POSTCOAT.
 13. ALL JUMPER WIRE, IF APPLICABLE, IS 36 GAUGE OR LARGER ETCHED TEFLON INSULATED WIRE, U.O.S. BOND WIRE(S) TO BOARD PER 580-5573-001. ROUTING OF JUMPERS OPTIONAL U.O.S.
 14. FINELINE/FINEPITCH TECHNOLOGY UTILIZED WITH .005 CIRCUIT LINES AND .005 MINIMUM CONDUCTOR SPACINGS.
 15. ASSEMBLE ITEMS 171 AND 172 PER 580-5481-001.
 16. DESIGNATORS E1-21,35-38,41,43,44,46-48,52-54,68,69,70-88, ARE FOR REFERENCE ONLY.
 17. BOND ITEMS 135 TO PC BOARD ITEM 1 USING ITEM 151 PER 580-5205-010.
 18. INSTALL ITEM 124 FROM BOTTOM SIDE. HEAT STAKE TOP SIDE.
 19. BOND ITEMS 2,3,4 AND 5 TO ITEM 1 AND TO EACH OTHER USING ITEM 151 PER 580-5205-010. ADHESIVE FILLET SHALL EXTEND AROUND PERIMETER AND .100 INCHES MINIMUM UP THE BODY OF ITEMS 2,3,4 AND 5.
 20. SOLDER FILLET NOT REQUIRED UNDER HEEL OF LEAD INDICATED FOR ITEMS 48,50 AND 51.
 21. REMOVE SOLDERMASK FROM AREAS INDICATED.
 22. CUT CIRCUIT LINES AT LOCATION OF .
 23. COVER AREAS OF ITEM 1 UNDER U50 USING ITEM 187 APPROX AS SHOWN. VIAS INDICATED MUST BE COVERED.
 - 24.
 25. REWORK SHALL CONFORM TO PROCESS REQUIREMENTS.
 26. LAP SOLDER WHERE INDICATED BY .
 27. ALL MEASUREMENTS ARE FROM THE MASTER 0-0. MASTER 0-0 OFFSET IS X=0.100 AND Y=0.100.
 28. BY DESIGN ITEM 6 MIDDLE TERMINATION POINTS WILL NOT MEET OVERHANG REQUIREMENTS FOR END TERMINATION.
 29. BOND C450 AND R802 TO ITEM 1 USING ITEM 191 PER 839-0507-001.
 30. JUMPERS 4 AND 5 TO BE AS SHORT AS POSSIBLE.
 31. JUMPER NUMBER 22 IS ROUTED FROM BOARD TOPSIDE, THROUGH HOLE AND TERMINATED ON BOARD BOTTOM SIDE.
 32. APPLY ITEM 189 TO BOARD. TRIM AS REQUIRED. BOND C451,C452 AND R801 TO ITEM 189 USING ITEM 191 PER 839-0507-001.
 33. APPLY ITEM 189 TO BOARD. TRIM AS REQUIRED. BOND C453,C454 AND R802 TO ITEM 189 USING ITEM 191 PER 839-0507-001.
 34. APPLY ITEM 190 TO BOARD. TRIM AS REQUIRED. BOND R800 TO ITEM 190 USING ITEM 191 PER 839-0507-001.
 35. SEE NOTES 29,32,33,38 AND 40.
 36. BOND R49 TO U15 USING ITEM 191 PER 839-0507-001.
 37. BY DESIGN, ITEM 8, MIDDLE TERMINATION POINT WILL NOT MEET OVERHANG REQUIREMENTS FOR END TERMINATION.
 38. BOND C270-285 TO TOP OF CR10 AND CR15-29 USING ITEM 191 PER 839-0507-001.
 39. ISOLATE PAD BY DRILLING AN .047 INCH DIAMETER HOLE AT LOCATION INDICATED BY . FILL WITH HYSOL.
 40. APPLY ITEM 190 TO BOARD. TRIM AS REQUIRED. BOND R601 TO ITEM 190 USING ITEM 191 PER 839-0507-001.

PARTS LIST CONTINUED ON PAGE 2

QTY	ITEM NO.	PART OR IDENT NO.	NOMENCLATURE OR DESCRIPTION	NOTES	REF DESIGNATORS
1	80	705-2438-430	RESISTOR, 9.09 k		R139
1	79	705-2438-420	RESISTOR, 8.25 k		R99
1	78	705-2438-400	RESISTOR, 7.5 k		R3
5	77	705-2438-350	RESISTOR, 5.11 k		R48,711,724,740,743
9	76	705-2438-330	RESISTOR, 4.75 k	36	R49,51,386-388, 393-395,726
3	75	705-2438-310	RESISTOR, 4.32 k		R20,26,45
3	74	705-2438-180	RESISTOR, 2.21 k		R90,146,476
2	73	705-2438-110	RESISTOR, 1.5 k		R2,84
32	72	705-2438-050	RESISTOR, 1 k		R1,7,25,31,57,58, 60-63,67-69,71-73, 75-77,82,91,136, 249-252,254,255,293, 458,459,702
1	71	705-2437-980	RESISTOR, 825		R92
3	70	705-2437-860	RESISTOR, 475		R23,431,432
9	69	705-2437-480	RESISTOR, 100	32,33,34	R22,24,79,81,731,738
14	68	705-2437-300	RESISTOR, 51.1		800-802
92	67	705-2437-230	RESISTOR, 33.2		R86,88,93,111,112, 257-264,289
1	66	705-2437-050	RESISTOR, 10		R21,47,89,277-281, 286-288,292,294-296, 301-325,327,329,331, 336,340,357,360,364, 401-424,440-455,474, 537-539
3	65	705-2437-010	RESISTOR, 0		R690
1	64	672-0834-030	XFMR, FLYBACK		R70,244,429
1	63	668-0260-020	COIL, 40		T1
1	62	667-0001-010	XFMR, NS300		L2
1	61	653-4029-078	RIBBON CABLE ASSY		T4
1	60	634-1348-008	BUTTON, CABLE MOD		
2	59	372-7577-060	CONN,ELEC		J8,9
1	57	372-7577-010	CONN,ELEC		J10
2	56	357-7553-030	CONN,ELEC		J5,7
16	55	353-8135-030	DIODE, MMBD7000		CR10,15-29
1	54	353-6662-010	DIODE, MBRB1545CT		CR5
2	53	353-6650-010	DIODE, MBRB20200CT		CR3,14
1	52	353-3863-010	DIODE, LM4040CIM3		VR26
3	51	353-1552-010	DIODE, UPS5819	20	CR2,12,30

QTY	ITEM NO.	PART OR IDENT NO.	NOMENCLATURE OR DESCRIPTION	NOTES	REF DESIGNATORS
PARTS LIST (US CUSTOMARY MEASUREMENTS ONLY)					

SCHEMATIC AND FAB BOARD APPLICABILITY REF. TABLE					
SCHEMATIC	ALT LTR	FAB BOARD	ALT LTR	CKT CARD ASSY	ALT LTR
828-8587-002	B	826-0007-476	A	828-3187-002	C
828-8587-002	C	826-0007-476	B	828-3187-002	D
828-8587-002	D	826-0007-476	B	828-3187-002	E
828-8587-002	E	826-0007-476	B	828-3187-002	F
828-8587-002	E	826-0007-476	B	828-3187-002	G

REVISIONS			
LTR	DESCRIPTION	DATE	RPVD
C	RL3049	11/30/2000	C.F.
D	RL4407	03/08/2001	KH
E	RL8325	05/08/2001	K.H.
F	RL9608	06/15/2001	CDF
G	RM3977	08/08/2001	CDF

8	50	353-0611-040	DIODE, UPTB8	20	VR4-11
2	49	353-0397-130	DIODE, MMBZ6V8ALT1		VR30,31
7	48	353-0397-090	DIODE, UPTB8	20	VR12-18
1	47	352-9663-090	INSULATOR		
3	46	352-9114-010	TRANSISTOR, 2907		06,15,17
7	45	352-9113-010	TRANSISTOR, 2222A		03,9-14
1	44	352-1715-010	TRANSISTOR, IRFP260		Q1
1	43	352-1302-320	TRANSISTOR, IRF530S		Q20
1	42	351-9605-050	IC, AD6640		U3
1	41	351-9604-400	IC, AD8801AR		U47
1	40	351-9604-390	IC, X25330S0I-2.5		U45
1	39	351-9604-330	IC, AD1582BRT		U118
1	38	351-9604-240	IC, TPS3305-25D		U56
3	37	351-9604-110	IC, AD5322-BRM		U68,69,124
3	36	351-9604-070	IC, LTC1069-6		U55,125,126
1	35	351-9603-970	IC, AD6620		U1
1	34	351-3298-010	IC, TPS76301DBVT		U42
1	33	351-3222-010	IC, GT20F160C38A90		U40
1	32	351-3111-050	IC, TMS320VC5416		U44
1	31	351-9603-520	IC, ADG406BP		U49
1	29	351-4104-010	IC, SNOOPY		U10
1	28	831-6205-001	IC, FPGA		U8
1	27	351-2660-010	IC, MAX146		U46
9	26	351-1278-030	IC, 2901		U21,23-25,52,60,71, 73,77
2	25	351-1278-020	IC, LM2903		U48,127
2	24	351-0985-010	IC, MAX490ESA		U2,43
1	23	351-0485-010	IC, MIC5015BM		U62
2	22	351-0475-010	IC, NC7SZ04M5		U120,121
3	21	351-0473-010	IC, NC7SZ32M5		U28,110,111
1	20	351-0414-020	IC, 1129		U61
4	19	350-4081-020	IC, NETWORK		U12,72,74,76
6	18	350-4081-010	IC, NETWORK		U95,96,98-101
1	17	343-0171-000	SCREW, .138-32X.50		
1	16	343-0135-000	SCREW, .112-40X0.38		
1	15	333-0368-000	NUT, SLFLKG, 0.138-32		
1	14	310-0779-050	WASHER, FLAT		
1	13	310-0779-030	WASHER, FLAT		
1	12	310-0279-000	WASHER, LOCK		
1	11	280-2745-040	LABEL, ESD	11	
1	10	277-0825-020	IC, 23.100 MHz		U50
6	8	241-0860-010	FILTER, 3300 pF	37	FL1-6
2	7	240-2933-130	COIL, 10		L6,7
1	6	214-0058-010	RELAY, DPDT		K1
2	5	183-1546-040	CAPACITOR, 15	19	C66,67
1	4	183-1546-030	CAPACITOR, 22	19	C97
5	3	183-1546-020	CAPACITOR, 150	19	C78,80,92-94
2	2	183-1546-010	CAPACITOR, 330	19	C82,91
1	1	826-0007-476	PHI		

QTY	ITEM NO.	PART OR IDENT NO.	NOMENCLATURE OR DESCRIPTION	NOTES	REF DESIGNATORS
PARTS LIST (US CUSTOMARY MEASUREMENTS ONLY)					

ROCKWELL COLLINS, INC			
400 COLLINS ROAD NE, CEDAR RAPIDS, IOWA 52498			
PREP R. LOVE Aug 08 2001		CIRCUIT CARD ASSEMBLY, DSP/PS(A2) BOARD	
CHK R. COLLETTE			
ENG RPVD K. HAMB		SIZE D	CAGE CODE 4V792
		DWG NO. 828-3187-002	REV LTR G
SCALE NONE		SHEET 1 OF 17	

41. ITEM 175 MAY EXCEED 33 PERCENT MAX OVERHANG REQUIREMENTS.

PARTS LIST CONTINUED ON PAGE 3

QTY	ITEM NO.	PART OR IDENT NO.	NOMENCLATURE OR DESCRIPTION	NOTES	REF DESIGNATORS
4	181	913-0865-460	CAPACITOR, 4700 pF	C26,27,162,163	
2	180	913-0865-450	CAPACITOR, 3900 pF	C202,208	
11	179	913-0865-380	CAPACITOR, 1000 pF	C22,23,25,197,225, 391,394,395,399,402, 410	
2	178	913-0865-300	CAPACITOR, 220 pF	C233,405	
1	177	913-0865-290	CAPACITOR, 180 pF	C28	
22	176	913-0865-260	CAPACITOR, 100 pF	29 C19,21,40,81,84,85, 100-104,222,223,230, 238,320-323,326,327, 450	
1	175	913-3669-100	CAPACITOR, 62 pF	41 C12	
26	174	913-0865-140	CAPACITOR, 10 pF	C71,83,112-119,123, 125-131,148-155	
110	173	913-0863-050	CAPACITOR, 0.1	C5,6,8-10,15,20,24, 30-34,36,39,41,46-54 69,72,109-111,121, 122,124,132-141,143, 144,146,147,156-161, 164-173,175,177,178, 183,195,200,201,206, 207,217-221,226-229, 231,235,267,300,319, 324,330,358,362-373, 375,390,396,397,407, 408,416,424,425	
2	172	859-5534-220	CONN,ELEC	15 J4,6	
2	171	859-4830-070	CONN,ELEC	15 J2,3	
2	170	849-2502-060	XFMR, 2-40 MHz	T2,5	
1	169	849-0028-130	COIL, 1	L1	
3	168	844-1024-220	DIODE, MMSZ5242B	VR3,27,28	
2	167	844-0126-040	DIODE, 1SMB7.0A	VR24,25	
1	166	844-0124-390	DIODE, MMSZ4716T1	VR29	
2	165	844-0124-370	DIODE, MMSZ4714T1	VR19,32	
1	164	844-0123-260	DIODE, 1SMB5940BT3	VR1	
1	163	844-0123-140	DIODE, 1SMB5934BT3	VR23	
2	162	844-0123-110	DIODE, 1SMB5927BT3	VR20,21	
1	161	844-0123-040	DIODE, 1SMB5918BT3	VR22	
1	160	844-0097-240	DIODE, 1SMC33A	VR2	
4	159	844-0087-020	DIODE, MBRD360	CR6-9	
8	158	844-0068-010	IC, HSMS-2805	U18,20,22,26,27,39, 41,128	
1	157	844-0022-010	DIODE, HSMS-2800	CR1	
1	156	844-0005-030	DIODE, MBR5130LT3	CR13	
2	155	844-0004-020	DIODE, 3Z0	CR4,11	
2	154	843-7016-020	TRANSISTOR, IRF9530S	Q18,19	
1	153	843-7007-020	TRANSISTOR, IRFR110	Q2	
2	152	843-2002-020	TRANSISTOR, MMBT5551	Q4,5	
1	151	005-3167-010	ADHESIVE,RTV-3145	17	
2	150	835-4509-010	IC, 74AC00	U17,19	
5	149	835-0367-010	IC, 482	U7,9,13-15	
2	148	835-0355-050	IC, 1129	U4,6	
1	147	835-0253-030	IC, UCC2804	U5	
1	146	835-0202-030	IC, 33079	U11	
4	145	835-0198-030	IC, MC33076D	U16,58,59,108	
2	144	834-5019-090	CAPACITOR, 0.01	C198,199	
1	143	834-5019-050	CAPACITOR, 0.1	C13	
3	142	834-5005-990	CAPACITOR, 1	C1,4,376	
17	141	834-5005-370	CAPACITOR, 0.1	32,33 C14,16,120,240-248, 250,256,257,451,453	
2	140	834-2008-220	CAPACITOR, 15	C251,252	
4	139	834-2008-190	CAPACITOR, 10	32,33 C74,254,452,454	
21	138	834-2008-140	CAPACITOR, 4.7	C3,70,75,76,79,87-90 234,236,237,258-266	
10	137	834-2008-070	CAPACITOR, 1	C2,17,62-65,77,142, 145,253	
1	136	834-2008-010	CAPACITOR, 0.1	C239	
3	135	834-1037-450	CAPACITOR, 220	17 C105,107,108	
5	134	833-6726-300	RESISTOR, 2 k	R126,218,219,375,376	
2	133	833-6526-550	RESISTOR, 36.5	R382,383	
4	132	833-6526-340	RESISTOR, 22.1	R718,719,732,763	
4	131	833-6526-010	RESISTOR, 10	R272,722,723,734	
1	130	833-6083-170	RESISTOR, 0.35	R494	
4	129	833-6009-020	RESISTOR, 10	R268-271	
1	128	833-4006-020	RESISTOR, 15	R113	
1	127	833-4004-820	RESISTOR, 5.11	R143	
2	126	833-4004-150	RESISTOR, 0.196	R140,141	
REF	125	828-8587-002	SCHEMATIC		
2	124	763-0889-003	RIVET	18	
3	123	705-3540-390	RESISTOR, 200	R27,159,160	
12	122	705-3539-390	RESISTOR, 18.2	R273-276,282-285, 297-300	
2	121	705-3539-140	RESISTOR, 10	40 R467,601	
2	120	705-3537-620	RESISTOR, 5.11 k	R16,17	
1	119	705-3538-250	RESISTOR, 28.7 k	R725	
2	118	705-3537-170	RESISTOR, 1.5 k	R229,230	
2	117	705-3535-730	RESISTOR, 475	R137,138	
3	116	705-3535-550	RESISTOR, 301	R358,472,473	
30	115	705-3535-270	RESISTOR, 12.1 k	R163,164,359,361-363 365-374,384,385,542, 545-547,555,556,560, 561,566,569-571	
4	114	705-3535-200	RESISTOR, 1 k	R236-239	
1	113	705-3535-060	RESISTOR, 100 k	R426	
1	112	705-3535-030	RESISTOR, 20 k	R267	
2	111	705-3205-540	RESISTOR, 243 k		R83,171
4	110	705-3205-410	RESISTOR, 130 k		R15,129,147,234
1	109	705-3205-190	RESISTOR, 43.2 k		R119
2	108	705-3205-110	RESISTOR, 27.4 k		R290,356
14	107	705-3205-080	RESISTOR, 24.3 k		R435,436,550-554, 557-559,578,581-583
4	106	705-3205-020	RESISTOR, 18.2 k		R35,231,470,727
13	105	705-3204-650	RESISTOR, 3.92 k		R142,543,544,548,549 562-565,586-589
3	104	705-3204-400	RESISTOR, 1.3 k		R233,390,397
1	103	705-3204-140	RESISTOR, 392		R34
3	102	705-2439-990	RESISTOR, 150		R241,242,735
2	101	705-2439-380	RESISTOR, 1 M		R220,227
1	100	705-2439-260	RESISTOR, 511 k		R222
2	99	705-2439-240	RESISTOR, 475 k		R221,223
1	98	705-2439-110	RESISTOR, 200 k		R145
2	97	705-2439-060	RESISTOR, 162 k		R226,480
5	96	705-2439-050	RESISTOR, 150 k		R4,5,8,9,228
2	95	705-2438-990	RESISTOR, 110 k		R224,225
13	94	705-2438-950	RESISTOR, 100 k	29	R87,127,128,148-153, 158,484,485,602
1	93	705-2438-910	RESISTOR, 82.5 k		R471
3	92	705-2438-820	RESISTOR, 61.9 k		R133,134,144
5	91	705-2438-810	RESISTOR, 56.2 k		R64,78,97,100,478
2	89	705-2438-790	RESISTOR, 49.9 k		R720,721
2	88	705-2438-780	RESISTOR, 47.5 k		R165,166
8	87	705-2438-710	RESISTOR, 33.2 k		R6,18,19,53-55,66, 102
3	86	705-2438-680	RESISTOR, 30.1 k		R105,122,479
2	85	705-2438-620	RESISTOR, 22.1 k		R65,291
72	84	705-2438-590	RESISTOR, 20 k		R12-14,28,30,32,33, 36,37,40,74,103,156, 161,167-170,172-174, 176-202,205-208,213, 216,217,377-380,391, 392,398,400,477,693, 694,700,704,705,709, 710,736
3	83	705-2438-510	RESISTOR, 13 k		R56,389,396
1	82	705-2438-490	RESISTOR, 12.1 k		R162
64	81	705-2438-440	RESISTOR, 10 k		R10,29,46,85,95,96, 98,101,104,106-110, 114,115,120,121, 123-125,130-132,154, 155,157,203,204,232, 235,240,256,265,266, 326,328,330,332-335, 337-339,341-355,381, 463-465

QTY	ITEM NO.	PART OR IDENT NO.	NOMENCLATURE OR DESCRIPTION	NOTES	REF DESIGNATORS
PARTS LIST (US CUSTOMARY MEASUREMENTS ONLY)					

QTY	ITEM NO.	PART OR IDENT NO.	NOMENCLATURE OR DESCRIPTION	NOTES	REF DESIGNATORS
PARTS LIST (US CUSTOMARY MEASUREMENTS ONLY)					

QTY	ITEM NO.	PART OR IDENT NO.	NOMENCLATURE OR DESCRIPTION	NOTES	REF DESIGNATORS
PARTS LIST (US CUSTOMARY MEASUREMENTS ONLY)					

ROCKWELL COLLINS, INC
400 COLLINS ROAD NE, CEDAR RAPIDS IOWA, 52498

PREP. LOVE	SIZE D	CRG CODE 4V792	DWG NO. 828-3187-002	REV LTR G
ROCKWELL PROPRIETARY INFORMATION.	CHK R. COLLETTE	SCALE NONE	SHEET 2	

DIGITAL DATA ONLY, NO MASTER TRACING.

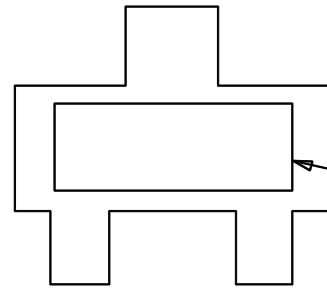
1	194 705-3540-270	RESISTOR, 150		R427
18	193 913-0865-620	CAPACITOR, 0.1	38	C270-287
2	192 705-2439-590	RESISTOR, 22.1		R245,246
AR	191 838-0002-010	ADHESIVE, UNISER	35	
2	190 628-7676-016	INSULATOR	34,40	
2	189 628-7676-014	INSULATOR	32,33	
4	188 705-3535-020	RESISTOR, 10 k		R50,52,118,135
AR	187 014-1375-010	TAPE, INSULATION (FT.)	23	
8	186 913-0865-600	CAPACITOR, 1000 pF		C35,38,204,205,210, 211,224,232
1	185 913-0865-640	CAPACITOR, 470 pF		C99
23	183 913-0865-500	CAPACITOR, 0.01		C7,11,18,29,37,42-45 55-61,196,357,361, 401,403,440,441
2	182 913-0865-470	CAPACITOR, 5600 pF		C203,209

QTY	ITEM NO.	PART OR IDENT NO.	NOMENCLATURE OR DESCRIPTION	NOTES	REF DESIGNATORS
PARTS LIST (US CUSTOMARY MEASUREMENTS ONLY)					

ROCKWELL COLLINS, INC
400 COLLINS ROAD NE, CEDAR RAPIDS IOWA, 52498

PREP. LOVE	SIZE D	CAGE CODE 4V792	DIAG NO. 828-3187-002	REV LTR G
ROCKWELL PROPRIETARY INFORMATION.	CHK R. COLLETTE	SCALE NONE	SHEET 3	

DIGITAL DATA ONLY, NO MASTER TRACING.

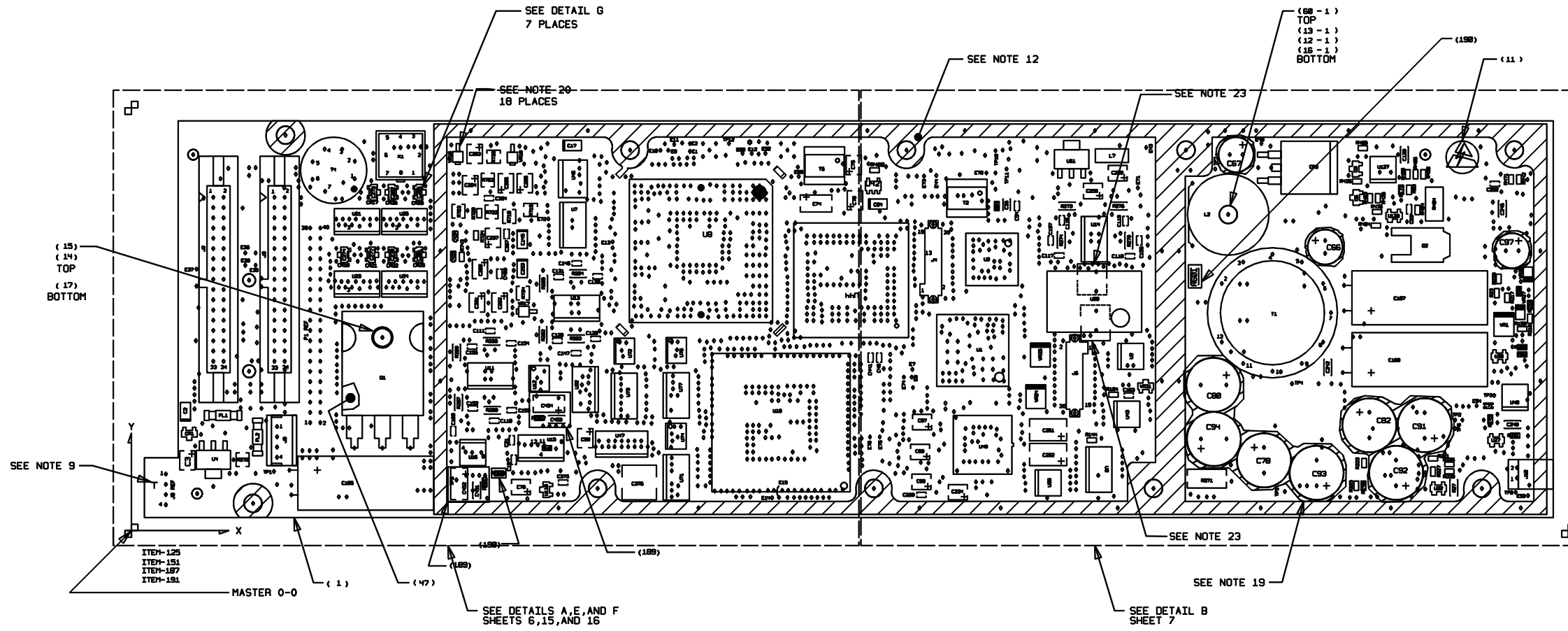


REF CR10,15,16,17,18,19,20,21,
22,23,24,25,26,27,28,29

REF C270,271,272,273,274,275,276,277,
278,279,280,281,282,283,284,285

SEE NOTE 38

DETAIL G
(FOR TOP SIDE COMPONENTS)

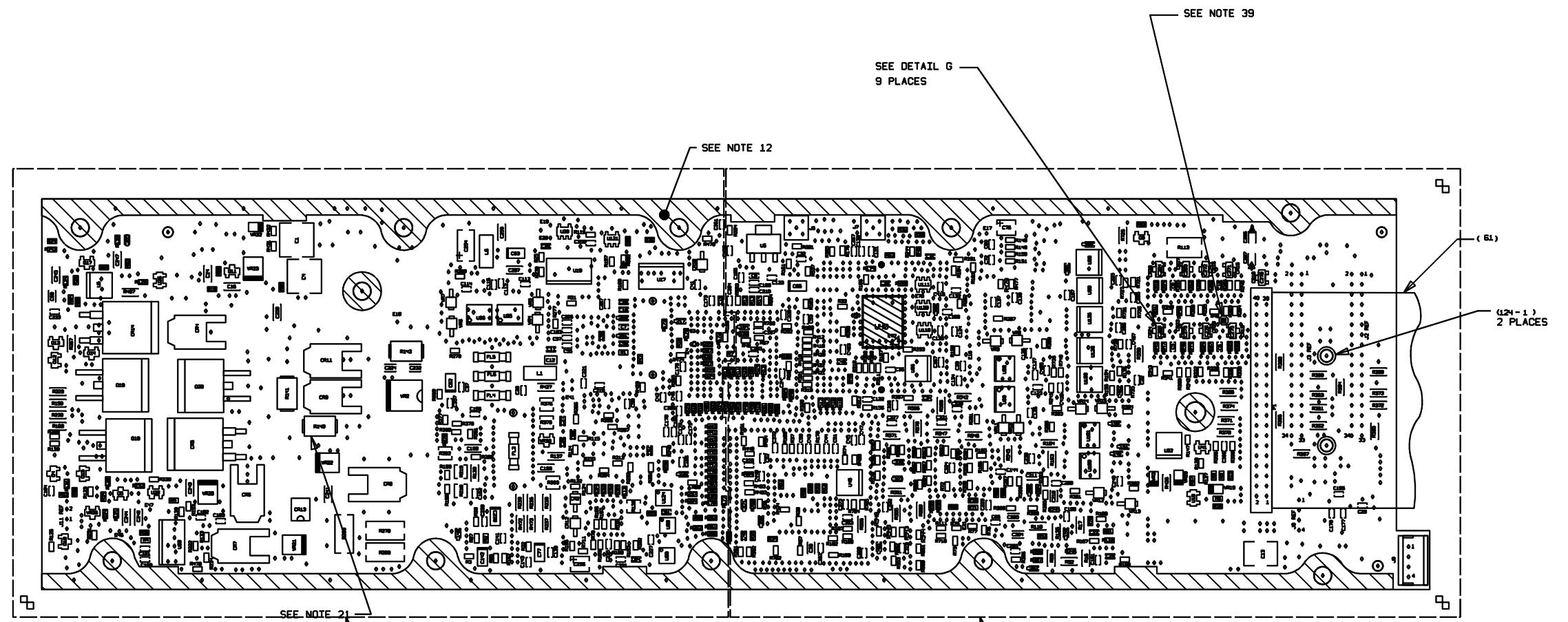


ROCKWELL COLLINS, INC
400 COLLINS ROAD NE, CEDAR RAPIDS IOWA, 52498

PREP R. LOVE 08-Aug-2001	SIZE D CAGE CODE 4V792	DWG NO. 828-3187-002	REV LTR G
CHK R. COLLETTE	SCALE NONE	SHEET 4	

ROCKWELL PROPRIETARY INFORMATION.

DIGITAL DATA ONLY, NO MASTER TRACING.



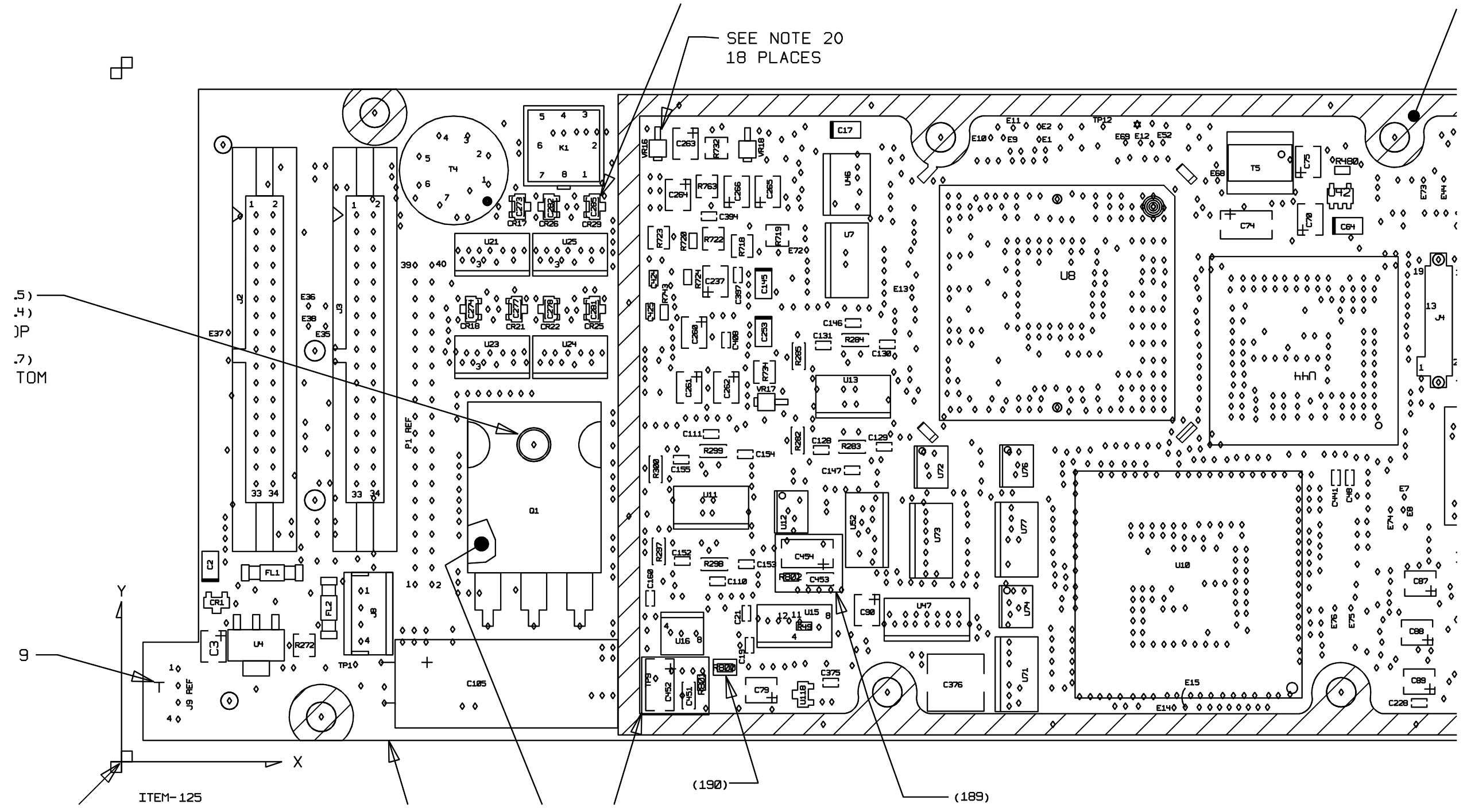
BOTTOM COMPONENTS

ROCKWELL PROPRIETARY INFORMATION.

PREP R. LOVE
08-Aug-2001
CHK R. COLLETTE

ROCKWELL COLLINS, INC 400 COLLINS ROAD NE, CEDAR RAPIDS IOWA, 52498			
SIZE	CAGE CODE	DWG NO.	REV
D	4V792	828-3187-002	LTR G
SCALE	NONE	SHEET	5

DIGITAL DATA ONLY, NO MASTER TRACING.



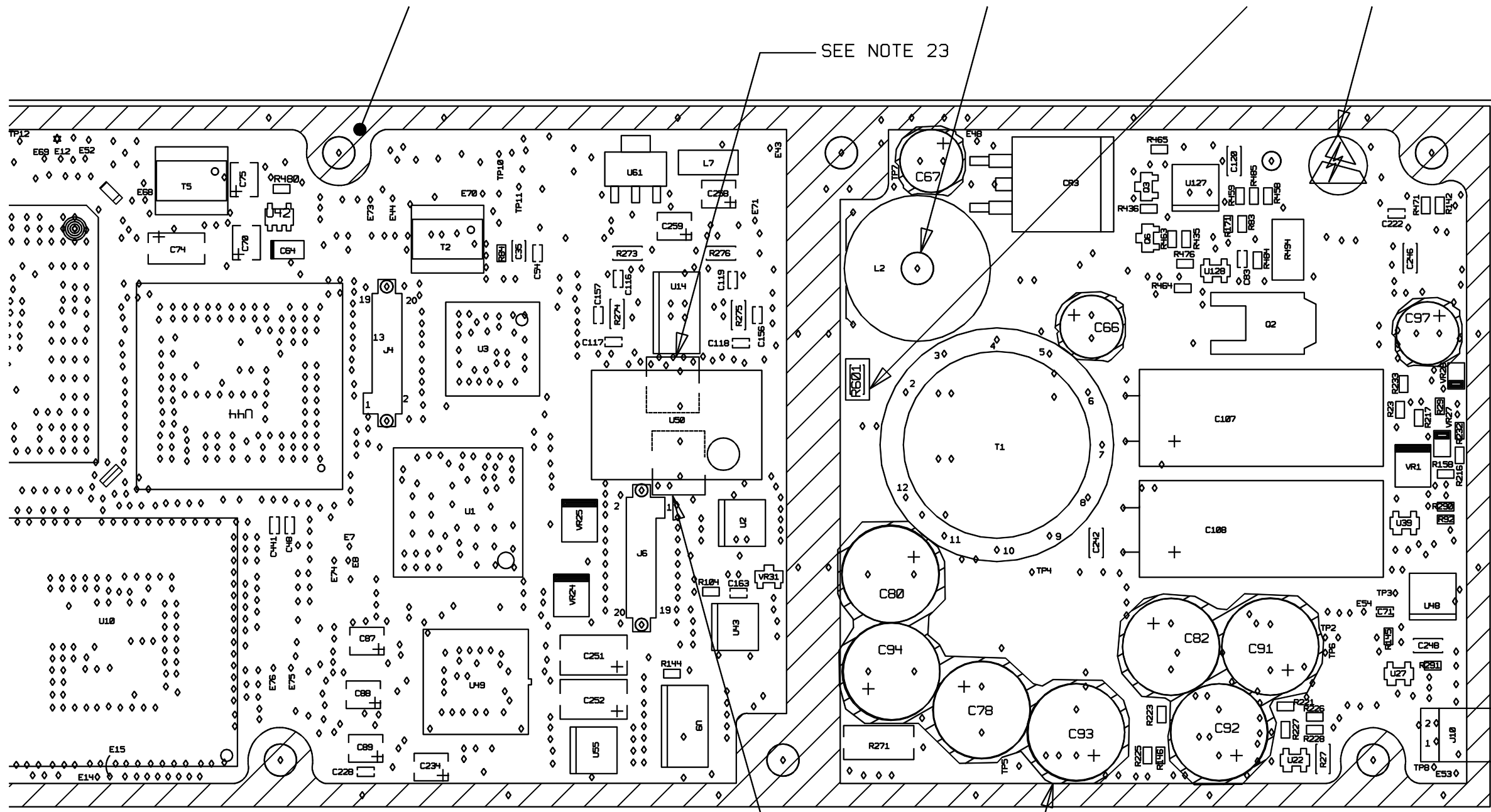
ASSEMBLY DETAIL A

ROCKWELL COLLINS, INC
 400 COLLINS ROAD NE, CEDAR RAPIDS IOWA, 52498

PREP R. LOVE 08-Aug-2001	SIZE D CAGE CODE 4V792	DWG NO. 828-3187-002	REV LTR G
CHK R. COLLETTE	SCALE NONE	SHEET 6	

ROCKWELL PROPRIETARY INFORMATION.

DIGITAL DATA ONLY, NO MASTER TRACING.



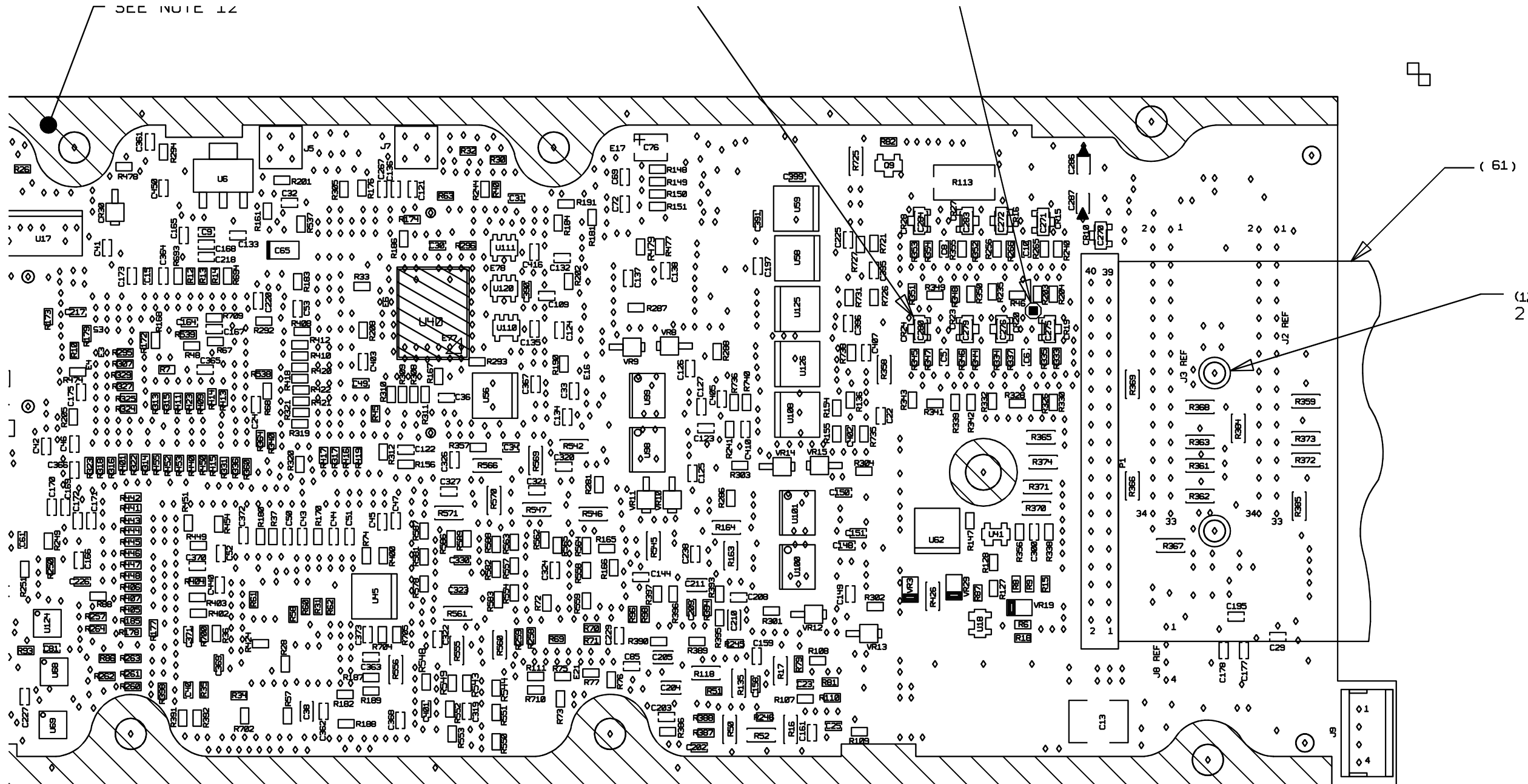
ASSEMBLY DETAIL B

ROCKWELL PROPRIETARY INFORMATION.

PREP R. LOVE 08-Aug-2001	SIZE D	CAGE CODE 4V792	DWG NO. 828-3187-002	REV LTR G
CHK R. COLLETTE	SCALE NONE	SHEET 7		

ROCKWELL COLLINS, INC
400 COLLINS ROAD NE, CEDAR RAPIDS IOWA, 52498

DIGITAL DATA ONLY, NO MASTER TRACING.



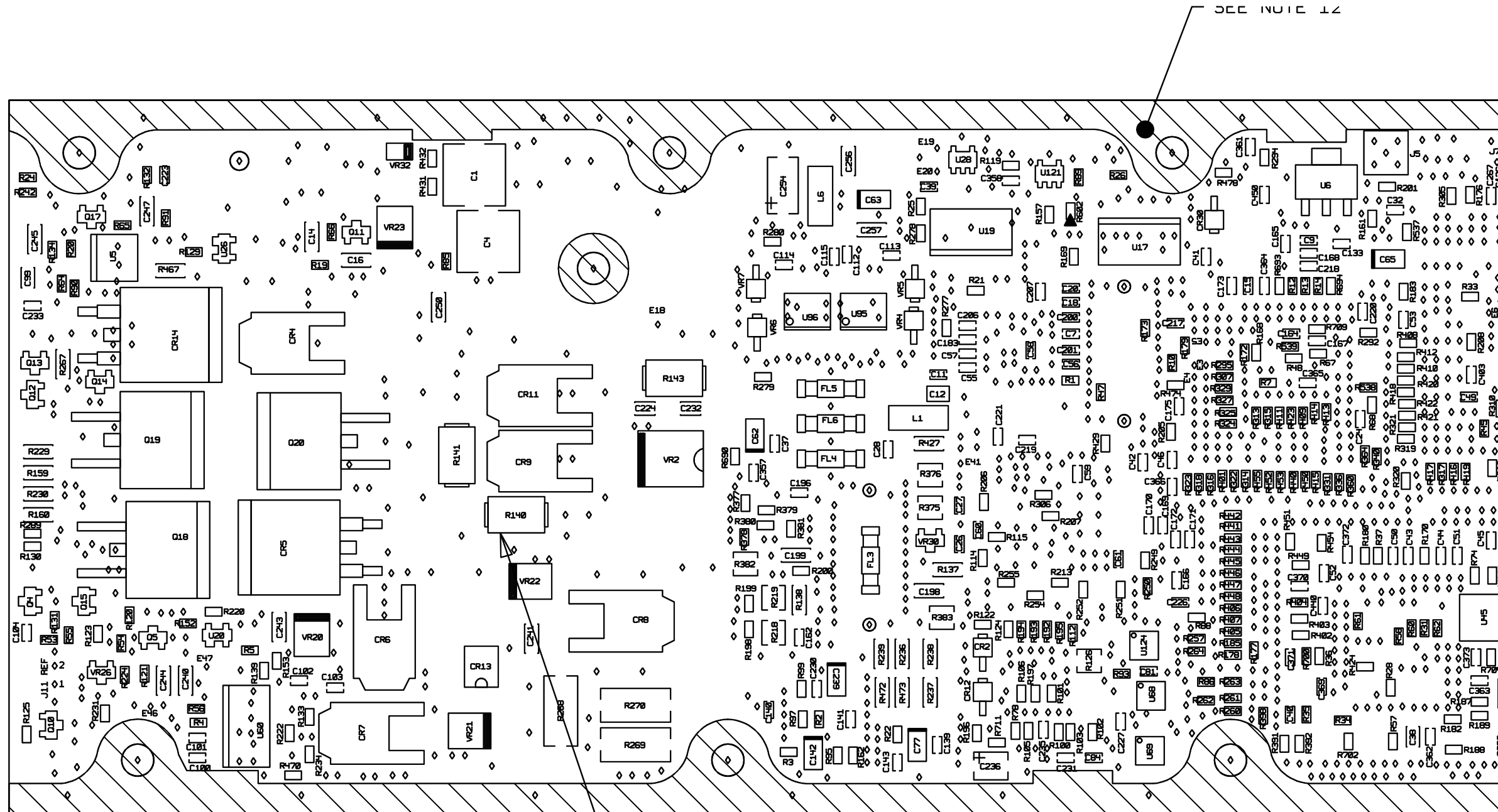
ASSEMBLY DETAIL C

ROCKWELL COLLINS, INC
 400 COLLINS ROAD NE, CEDAR RAPIDS IOWA, 52498

PREP R. LOVE 08-Aug-2001	SIZE D	CAGE CODE 4V792	DWG NO. 828-3187-002	REV LTR G
CHK R. COLLETTE	SCALE NONE	SHEET 8		

ROCKWELL PROPRIETARY INFORMATION.

DIGITAL DATA ONLY, NO MASTER TRACING.



SEE NOTE 21

ASSEMBLY DETAIL D

ROCKWELL PROPRIETARY INFORMATION.

ROCKWELL COLLINS, INC
400 COLLINS ROAD NE, CEDAR RAPIDS IOWA, 52498

PREP R. LOVE 08-Aug-2001	SIZE D	CAGE CODE 4V792	DWG NO. 828-3187-002	REV LTR G
CHK R. COLLETTE	SCALE NONE	SHEET 9		

DIGITAL DATA ONLY, NO MASTER TRACING.