

NOTES:

1. PARENTHETICAL ITEM IDENTIFICATION DENOTES (ITEM FIND NO.-QTY).
2. REFERENCE DESIGNATORS ARE USED IN LIEU OF ITEM FIND NUMBERS.
3. 500-6520-001 MAY BE UTILIZED ON THIS ASSEMBLY.
4. TO BE TESTED AT A HIGHER LEVEL.
5. SOLDER PER COMMERCIAL REQUIREMENTS (500-5178-000).
6. MAXIMUM Z TOP DIMENSION SHALL NOT EXCEED 0.300. EXCEPT FL1, J1, U103 AND U187 SHALL HAVE A MAXIMUM Z TOP OF 0.410. MAXIMUM Z BOTTOM DIMENSION SHALL NOT EXCEED 0.163. EXCEPT L3,110, 113 AND U18 SHALL HAVE A MAXIMUM Z BOTTOM OF 0.223.
7. MARK REV LETTER FOLLOWING THE APPROPRIATE LETTERS REV PER 838-0497-001. ASSEMBLY IDENTIFIED BY APPLICATION OF MARKING REQUIREMENTS ON FAB PART.
8. MAXIMUM LEAD PROTRUSION TO BE .100.
9. "T" DESIGNATES BOARD TOP SURFACE.
10. PER MANUFACTURING, PROJECT OR CONTRACT REQUIREMENTS, MARK THE MANUFACTURING CONTROL NUMBER FOLLOWING THE LETTERS MCM PER 838-0497-001.
11. CAUTION THIS ASSEMBLY CONTAINS ELECTROSTATIC SENSITIVE DEVICES, HANDLE PER 489-0004-001.
12. POSTCORT TOP AND BOTTOM SIDES PER 500-5458-001. CROSSHATCHED AREAS TO BE FREE OF POSTCORT, TOP AND BOTTOM.
13. FINELINE/FINEPITCH TECHNOLOGY UTILIZED WITH .008 CIRCUIT LINES AND .008 MINIMUM CONDUCTOR SPACINGS.
14. ALL JUMPER WIRE, IF APPLICABLE, IS 36 GAUGE OR LARGER ETCHED TEFLON INSULATED WIRE, U.O.S. BOND WIRE(S) TO BOARD PER 838-0513-001. ROUTING OF JUMPERS OPTIONAL U.O.S.
15. APPLY ITEM 228 UNDER U800, TRIM AS REQUIRED.

SCHEMATIC AND FAB BOARD APPLICABILITY REF. TABLE			
SCHEMATIC	FAB BOARD	CKT CARD ASST	
828-8710-003	828-0007-900	828-3310-003	

REVISIONS			
LT#	DESCRIPTION	DATE	APPD

QTY	ITEM	PART OR IDENT NO.	DESCRIPTION	REMARKS	REF DESIGNATORS
1	47	853-1156-002	SHIELD WELDMENT, RF		
3	46	357-7553-030	CONN,ELEC	J2-4	
2	45	353-8137-060	DIODE, 0M4100	CR901,902	
2	44	353-8136-060	DIODE, 0M340-06	CR706,708	
1	43	353-8136-050	DIODE, 0M340-05	CR707	
1	42	353-8136-040	DIODE, 0M340-04	CR705	
5	41	353-8135-040	DIODE, 0M6091X	CR6,7,13,18,942	
4	40	353-8135-010	DIODE, 0M60660X	CR19,20,106,107	
1	39	353-8133-010	DIODE, 0M625226B	VR800	
1	38	353-8127-130	DIODE, 0M625227B11	VR1	
1	37	353-8127-030	DIODE, 0M625236B11	VR2	
1	36	352-9137-010	TRANSISTOR, D1017	Q303	
4	35	352-9114-020	TRANSISTOR, 2207A	Q11,17,100,701	
3	34	352-9113-020	TRANSISTOR, 2222A	Q13,16,703	
6	33	352-9113-010	TRANSISTOR, 2212A	Q2-5,7,8	
1	32	352-6020-010	TRANSISTOR, INF19014	Q702	
1	31	352-1302-330	TRANSISTOR, 8LF245	Q906	
1	30	352-1302-130	TRANSISTOR, 0M739004U	Q12	
2	29	352-1302-000	TRANSISTOR, 0M739004U	Q15,107	
1	28	352-1302-070	TRANSISTOR, 0M739004U	Q105	
2	27	352-0838-010	TRANSISTOR, 85639A	Q6,9	
3	26	351-9004-500	IC, INA-1030B	U11,17,1000	
2	25	351-9003-820	IC, TRF2050	U101,105	
1	24	351-9003-470	IC, LM60C103	U900	
1	23	351-4128-010	IC, RF2404	U804	
1	22	351-1302-100	IC, 802	U700	
1	21	351-0414-020	IC, 1129	U202	
6	20	351-0398-010	IC, LM837H	U1,3,5,6,15,710	
1	19	291-5900-030	FILTER, 20.075 MHz	FL1	
1	18	278-0441-000	XFMR, RF	TS01	
3	17	278-0441-010	XFMR, RF	U18,104,108	
3	16	241-0093-010	FILTER, 3300 pF	FL25-27	
8	15	241-0094-040	FILTER, 220 pF	FL9-13,21,22	
18	14	241-0094-010	FILTER, 22000 pF	FL2-7,14,15,17,20,23	
3	13	240-2339-100	COIL, 50 nH	L27,002,913	
1	12	240-2339-150	COIL, 47 nH	L801	
3	11	240-2339-130	COIL, 33 nH	L1,4,900	
3	10	240-2339-110	COIL, 22 nH	L2,3,906	
1	9	240-2339-060	COIL, 82 nH	L707	
9	8	240-2339-040	COIL, 39 nH	L7,9,12,13,103,104,106,107,111	
2	7	240-2333-250	COIL, 100	L101,105	
6	6	240-2333-130	COIL, 10	L26,201-205	
1	5	240-2052-060	COIL, 20 nH	L915	
2	4	240-2052-040	COIL, 12.5 nH	L902,903	
1	3	240-2052-010	COIL, 2.5 nH	L910	
2	2	207-0062-140	COIL, 1.2	L703,706	
1		828-0007-900	FAB		

PARTS LIST CONTINUED ON PAGE 2

1	102	705-3205-100	RESISTOR, 36.5 k	R749
4	101	705-3205-110	RESISTOR, 27.4 k	R15,141,100,200
2	100	705-3205-080	RESISTOR, 24.3 k	R1,56
3	99	705-3205-020	RESISTOR, 18.2 k	R98,103,126
1	98	705-3204-770	RESISTOR, 6.49 k	R89
3	97	705-3204-050	RESISTOR, 3.32 k	R90,167,193
2	96	705-3204-630	RESISTOR, 3.05 k	R125,155
3	95	705-3204-500	RESISTOR, 2.74 k	R132,133,157
3	94	705-3204-400	RESISTOR, 1.82 k	R1,211,771
5	93	705-3204-170	RESISTOR, .432	R74,76,112,162,777
2	92	705-3204-120	RESISTOR, .365	R4,91
6	91	705-3204-070	RESISTOR, .301	R32,73,78,83,84,195
5	90	705-2439-980	RESISTOR, 150	R40,303,304,900,911
3	89	705-2439-730	RESISTOR, 36.5	R100,302,910
4	88	705-2439-660	RESISTOR, 27.4	R102,197,213,215
9	87	705-2439-630	RESISTOR, 24.9	R009,014,043
1	86	705-2439-350	RESISTOR, 900 k	R946
1	85	705-2439-240	RESISTOR, 475 k	R93
1	84	705-2439-130	RESISTOR, 221 k	R19
2	83	705-2439-980	RESISTOR, 110 k	R101,123
20	82	705-2439-950	RESISTOR, 100 k	R6-9,21,29,33,35-38,45,47,49,50,52,88,89,130,139,159,100,204,205,749,306,943,944,946,945
2	81	705-2438-010	RESISTOR, 56.2 k	R60,00,104,229,230
5	80	705-2438-000	RESISTOR, 51.1 k	R27
1	79	705-2438-780	RESISTOR, 47.5 k	R27
5	78	705-2438-710	RESISTOR, 33.2 k	R46,46,86,87,239
2	77	705-2438-620	RESISTOR, 22.1 k	R28,189
11	76	705-2438-530	RESISTOR, 20 k	R92,118,119,137,151-153,168,169,407,408

QTY	ITEM	PART OR IDENT NO.	DESCRIPTION	REMARKS	REF DESIGNATORS
PARTS LIST (US CUSTOMARY MEASUREMENTS ONLY)					

QTY	ITEM	PART OR IDENT NO.	DESCRIPTION	REMARKS	REF DESIGNATORS
PARTS LIST (US CUSTOMARY MEASUREMENTS ONLY)					

QTY	ITEM	PART OR IDENT NO.	DESCRIPTION	REMARKS	REF DESIGNATORS
PARTS LIST (US CUSTOMARY MEASUREMENTS ONLY)					



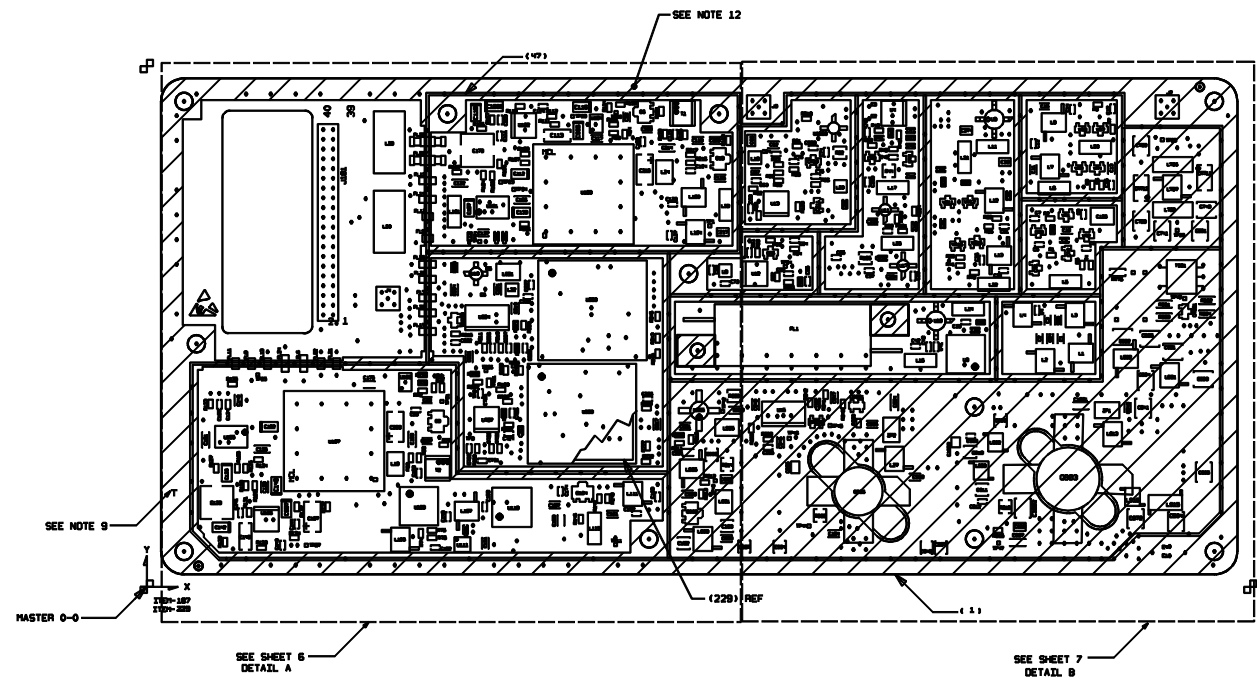
0.06	229	014-1339-090	TAPE, KAPTON	15	
1	228	014-3503-060	CAPACITOR, 220 pF		C972
1	227	014-3503-730	CAPACITOR, 500 pF		C995
4	226	014-3503-710	CAPACITOR, 470 pF		C501, 741, 750, 911
1	225	014-3503-430	CAPACITOR, 47 pF		C1002
1	224	014-3503-110	CAPACITOR, 39 pF		C994
1	223	014-3503-400	CAPACITOR, 36 pF		C804
1	222	014-3503-360	CAPACITOR, 24 pF		C803
2	221	014-3503-330	CAPACITOR, 18 pF		C805, 700
1	220	014-3503-300	CAPACITOR, 13 pF		C749
1	219	014-3503-210	CAPACITOR, 5.6 pF		C801
1	218	014-3503-160	CAPACITOR, 3.6 pF		C802
2	217	014-3500-370	CAPACITOR, 100 pF		C904, 911

QTY	ITEM	PART OR	NO	NOTES	REF
IND.		IDENTIF.	IDENTIF.		DESIGNATORS
PARTS LIST (US CUSTOMARY MEASUREMENTS ONLY)					

**ROCKWELL COLLINS, INC**  
 100 COLLINS ROAD NE, GEDEN RAPIDS IOWA, 52208

DESIGNED BY R. COLLETTE	DRAWN BY D 4V792	DWG NO. 828-3310-003	REV LTR -
ROCKWELL PROPRIETARY INFORMATION. CHK. H. FABRY		SCALE NONE	SHEET 3

DIGITAL DATA ONLY, NO PAPER TRACING.

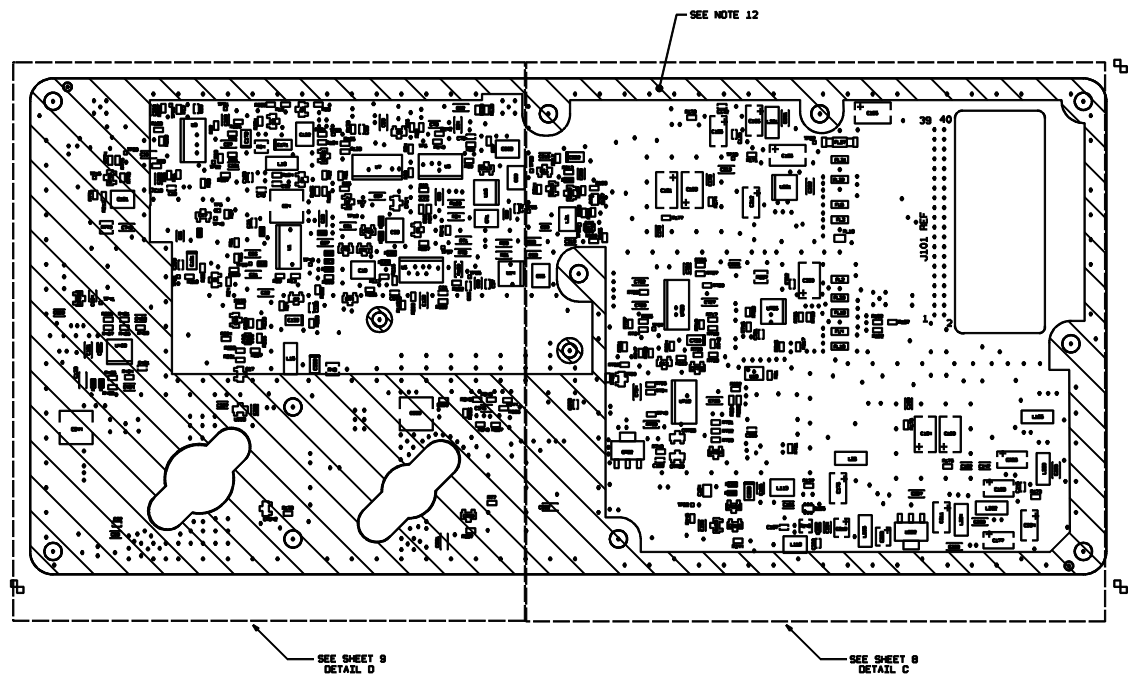


COMPONENTS TOP

ROCKWELL COLLINS, INC  
100 COLLING ROAD NE, CEDAR RAPIDS IOWA, 52408

PREP D COLLETTE 11-Sep-2001	CHK H. FARRBY	DRG NO. 828-3310-003	REV LTH -
ROCKWELL PROPRIETARY INFORMATION.		SCALE NONE	SHEET 4

DIGITAL DATA ONLY, NO PAPER TRACING.

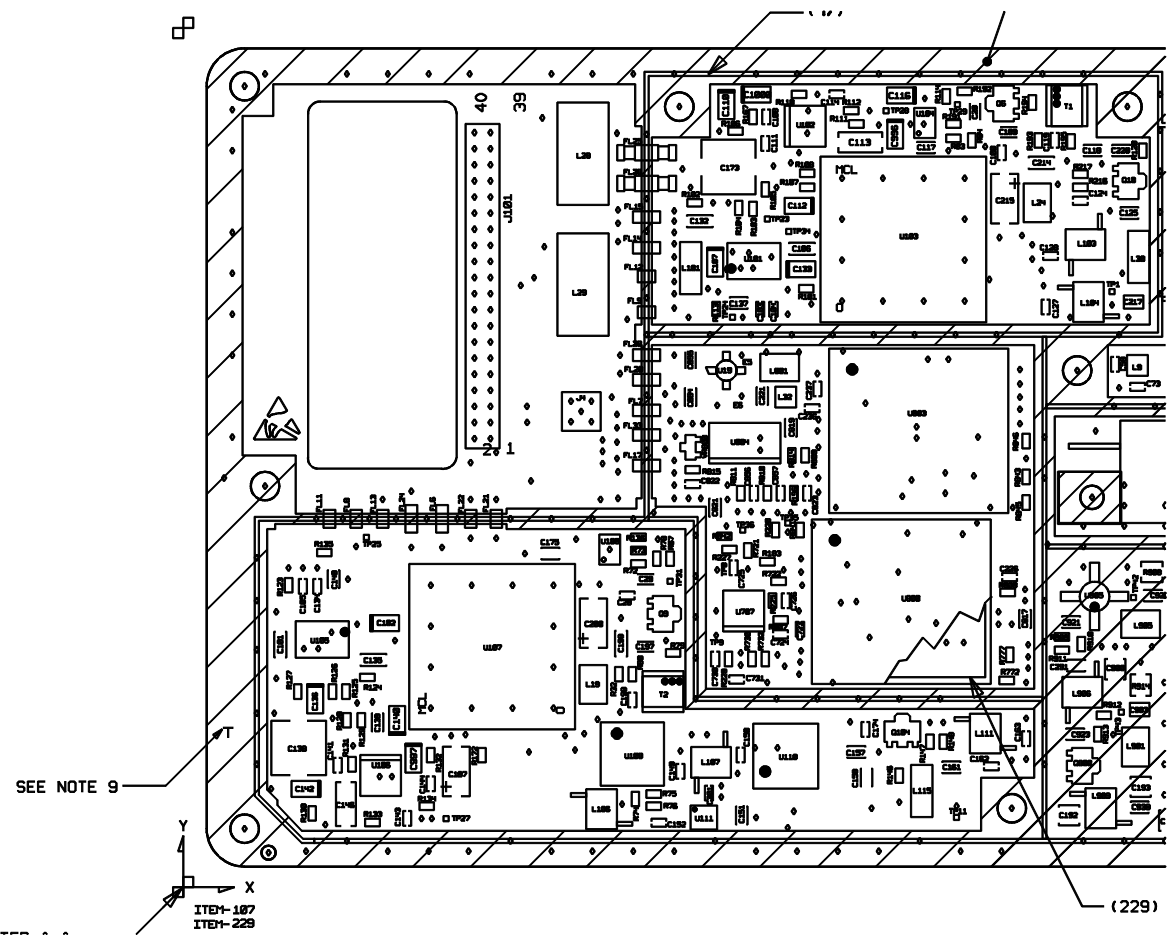


COMPONENTS BOTTOM

ROCKWELL COLLINS, INC  
1400 COLLINGS ROAD NE, CEDAR RAPIDS IOWA, 52498

PREP R. COLLETTE 11-Sep-2001	BLK / CRK CODE D 4V792	DWG NO. 828-3310-003	REV LTH -
ROCKWELL PROPRIETARY INFORMATION. CHK H.FABRYN	SCALE NONE	SHEET 5	

DIGITAL DATA ONLY, NO PAPER TRACING.

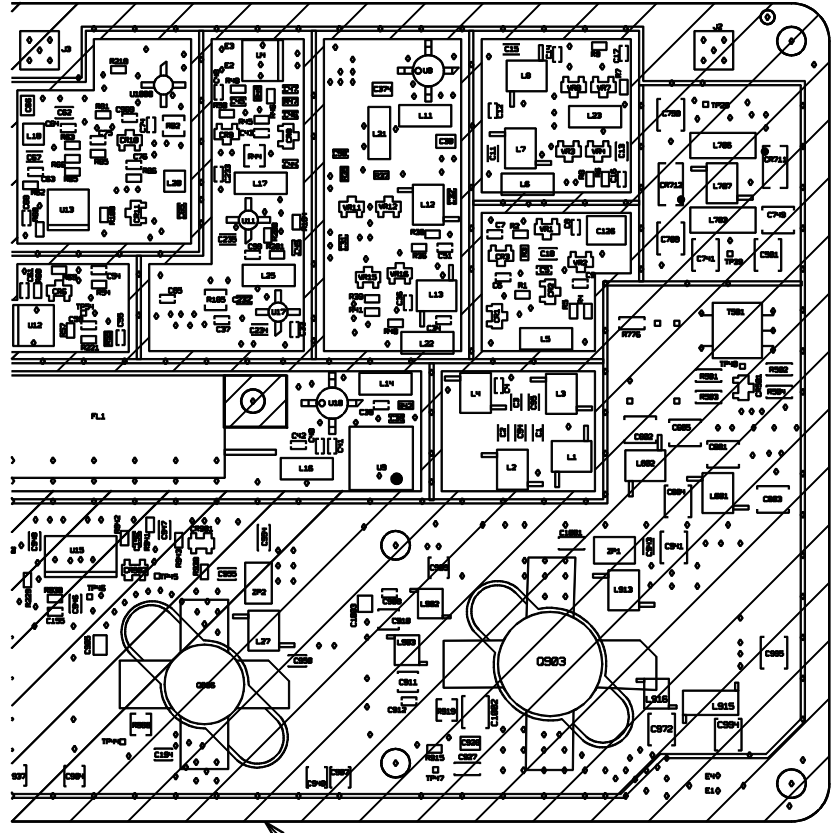


ASSEMBLY DETAIL A

ROCKWELL COLLINS, INC  
1900 COLLINS ROAD NE, GEORGETOWN, GA 30426

PREP D. COLLETTE 11-Sep-2001	CHK H. FARRBY	DATE 11-Sep-2001	DWG NO. 828-3310-003	REV -
ROCKWELL PROPRIETARY INFORMATION.		SCALE NONE	SHEET 6	

DIGITAL DATA ONLY, NO PAPER TRACING.

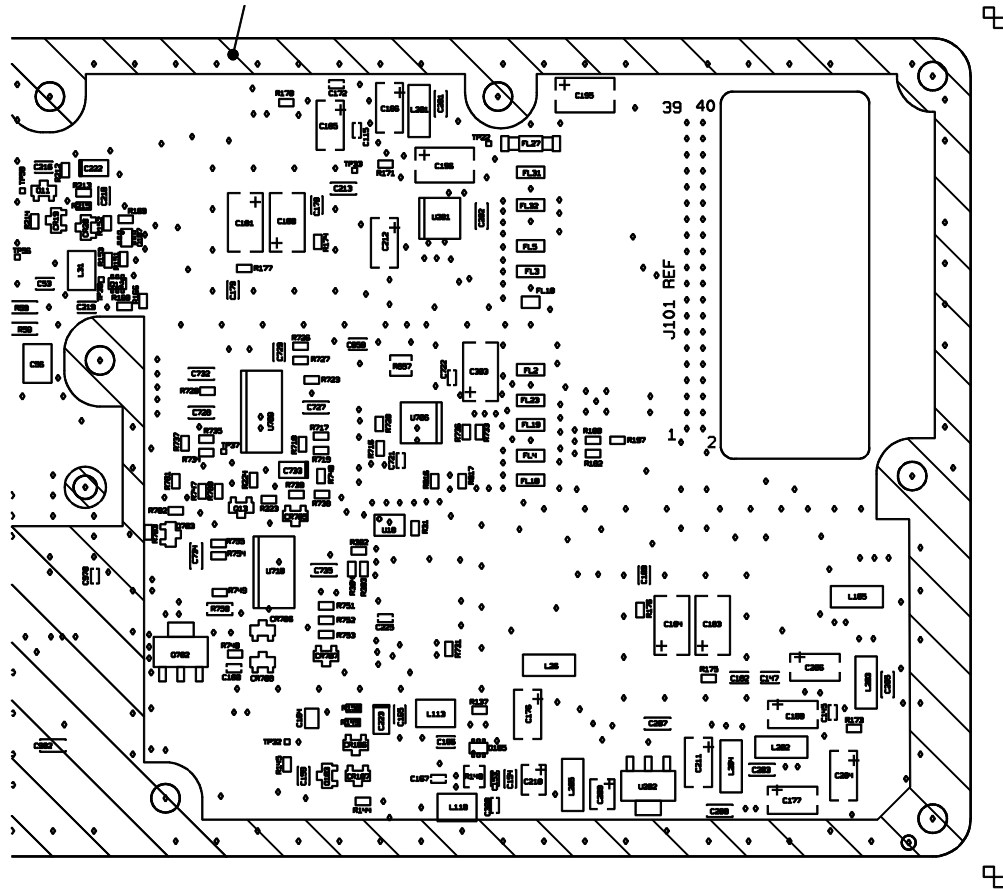


REF

( 1 )

ASSEMBLY DETAIL B

ROCKWELL COLLINS, INC 100 COLLINS ROAD NE, CEDAR RAPIDS IOWA, 52408		DRG NO. 828-3310-003	REV -
PREP D COLLETTE 11-Sep-2001	CHK H.FABRY	SCALE NONE	SHEET 7
ROCKWELL PROPRIETARY INFORMATION. DIGITAL DATA ONLY, NO PAPER TRACING.			

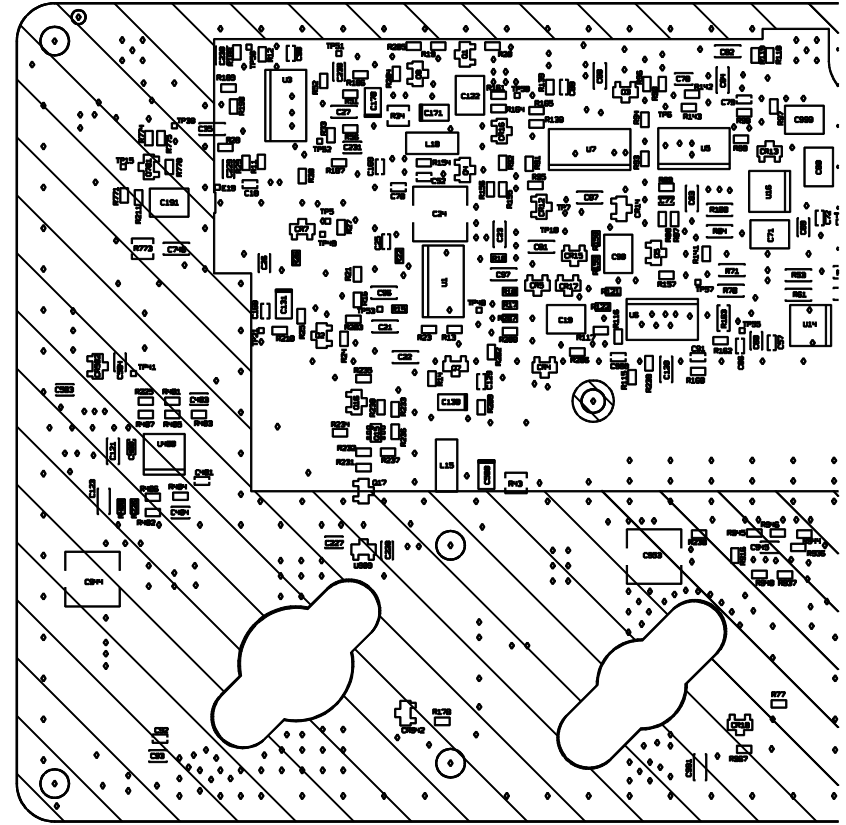


ASSEMBLY DETAIL C

ROCKWELL PROPRIETARY INFORMATION.		ROCKWELL COLLINS, INC 100 COLLING ROAD NE, CEDAR RAPIDS IA 52401, 524-98	
PREP R. COLLETTE 11-Sep-2001	CHK H. FARRBY	DESG NO. 828-3310-003 D 4V792 SCALE NONE	REV LTR - SHEET 8

DIGITAL DATA ONLY, NO MASTER TRACING.





ASSEMBLY DETAIL D

ROCKWELL COLLINS, INC  
100 COLLINS ROAD NE, GAITHERSBURG 20878

PREP D. COLLETTE 11-Sep-2001	CHK H. FARRBY	DRG NO. D 4V792	SCALE NONE	REV - LTH	REV - LTH	SHEET 9
------------------------------------	------------------	--------------------	---------------	-----------------	-----------------	------------

ROCKWELL PROPRIETARY INFORMATION.

DIGITAL DATA ONLY, NO MASTER TRACING.