

- NOTES:
1. PARENTHETICAL ITEM IDENTIFICATION DENOTES (ITEM FIND NO.-QTY).
 2. REFERENCE DESIGNATORS ARE USED IN LIEU OF ITEM FIND NUMBERS.
 3. 500-6520-001 MAY BE UTILIZED ON THIS ASSEMBLY.
 4. TO BE TESTED AT A HIGHER LEVEL.
 5. SOLDER PER COMMERCIAL REQUIREMENTS (500-5178-000).
 6. MAXIMUM Z TOP DIMENSION SHALL NOT EXCEED 1.500.
MAXIMUM Z BOTTOM DIMENSION SHALL NOT EXCEED 0.151.
 7. MARK REV LETTER FOLLOWING THE APPROPRIATE LETTERS REV PER 830-0497-001.
ASSEMBLY IDENTIFIED BY APPLICATION OF MARKING REQUIREMENTS ON FAB PART.
 8. MAXIMUM LEAD PROTRUSION TO BE .000.
 9. "*" DESIGNATES BOARD TOP SURFACE.
 10. PER MANUFACTURING, PROJECT OR CONTRACT REQUIREMENTS,
MARK THE MANUFACTURING CONTROL NUMBER FOLLOWING THE LETTERS MCN PER 830-0497-001.
 11. ALL JUMPER WIRE, IF APPLICABLE, IS 36 GAUGE OR LARGER ETCHED TEFLON INSULATED WIRE, U.O.S. BOND WIRE(S) TO BOARD PER 830-0519-001. ROUTING OF JUMPERS OPTIONAL U.O.S.

SCHEMATIC AND FAB BOARD APPLICABILITY REF. TABLE			
SCHEMATIC	FAB BOARD	CKT CARD ASST	
828-8712-003	-	826-0008-118	-
		828-3312-003	-

REVISIONS			
LTN	DESCRIPTION	DATE	APVD

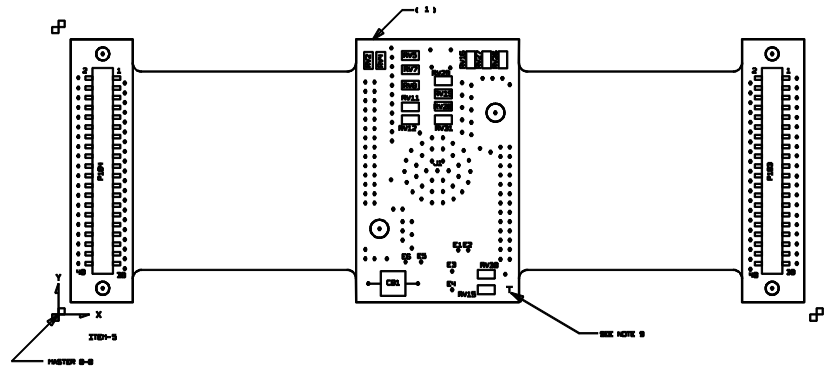
1	7	834-5031-000	CAPACITOR, .01 uF	C2
1	6	834-5031-010	CAPACITOR, 100 pF	C1
REF	5	828-8712-003	SCHEMATIC	
31	4	714-1684-020	VARISTOR, 68V	RV1-31
2	3	372-0331-100	CONN,ELEC	P103,104
1	2	013-1971-010	CIRCUIT BREAKER, 2007-	CB1
1		826-0008-118	FAB	

QTY	ITEM	PART OR IDENT. NO.	NOMENCLATURE OR DESCRIPTION	NOTES	REF DESIGNATORS
PARTS LIST (US CUSTOMARY MEASUREMENTS ONLY)					

ROCKWELL COLLINS, INC			
1000 COLLINS ROAD NE, CEDAR RAPIDS, IOWA 52405			
PREP BY: COLLETTIE Sep 19 2001	CIRCUIT CARD ASSEMBLY, INTERCONNECT (A3)		
CHK BY: FABRY			
ENG BY: J. BLAIR	SIZE: D	CRK CODE: 4V792	DWG NO: 828-3312-003
APVD:	SCALE: NONE	REV LTR: -	SHEET 1 OF 3

REDAC

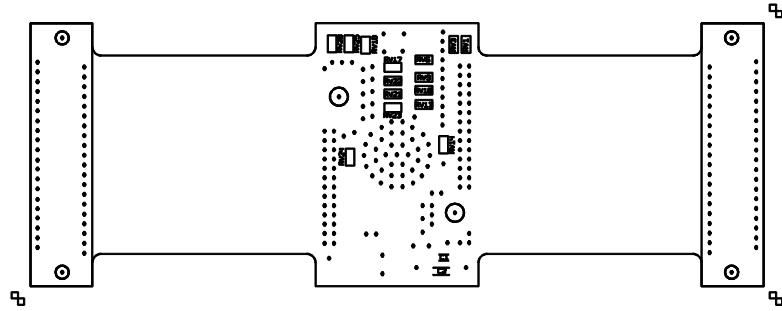
ROCKWELL PROPRIETARY INFORMATION.



ROCKWELL COLLINS, INC
 1000 COLLINS ROAD NE, CEDAR RAPIDS IOWA, 52498

PREP D. COLLETTE 18-Sep-2001	SKETCH ORIGIN D 4V792	DISG NO. 828-3312-003	REV L10 -
ROCKWELL PROPRIETARY INFORMATION. CHK H. FERRY	SCALE NONE	SHEET 2	

DIGITAL DATA ONLY, NO PAPER TRACING.



COMPONENTS BOTTOM

ROCKWELL COLLINS, INC
100 COLLING ROAD NE, CEDAR RAPIDS IA, 52408

PREP D. COLLETTE 18-Sep-2001	SIZE / CHK CODE D / 4V792	DWG NO. 828-3312-003	REV LTR -
ROCKWELL PROPRIETARY INFORMATION. CHK H. FERRY	SCALE NONE	SHEET 3	

DIGITAL DATA ONLY, NO PAPER TRACING.